

Enrollment Summary Winter Term 2008

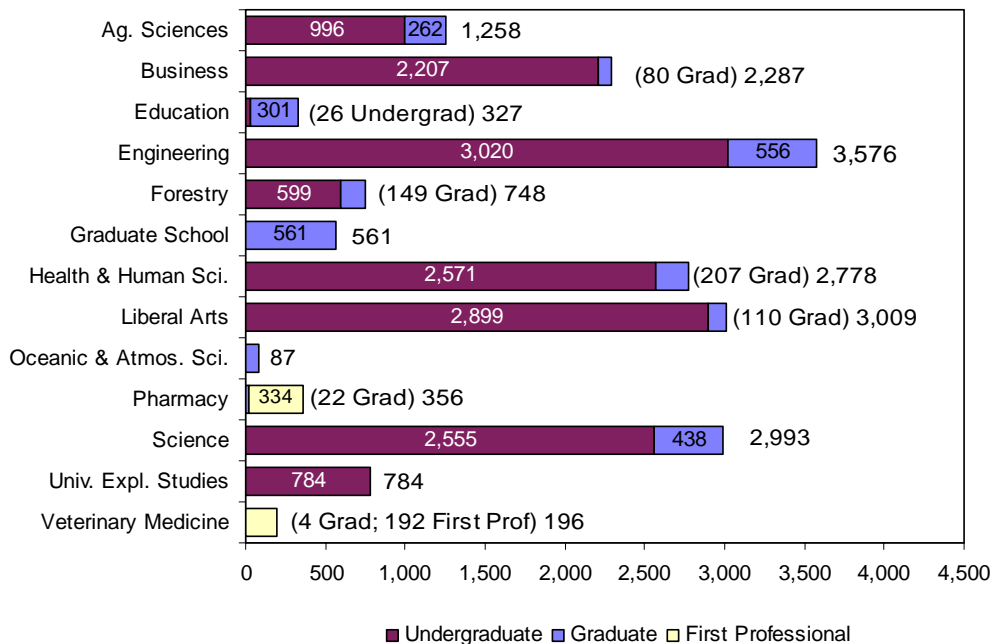


Enrollment at-a-Glance

	2007	2008	Change	% Change	*Winter Term uses the OUS definition, which excludes credit hours and FTE for students who withdrew from courses before the 4th week. Agribusiness credits at EOU are also not included.
Total Enrollment (Headcount)	18,775	18,960	185	1.0%	
Total Student FTE *	17,479.2	17,535.5	56.3	0.3%	
Total Student Credit Hours*	247,175	248,269	1,094	0.4%	

	2007		2008		Change	
	Headcount	Percent	Headcount	Percent	Headcount	Percent
Women	8,907	47.4%	9,001	47.5%	94	1.1%
Men	9,868	52.6%	9,959	52.5%	91	0.9%
Full-Time	15,539	82.8%	15,678	82.7%	139	0.9%
Part-Time	3,236	17.2%	3,282	17.3%	46	1.4%
Undergraduate	15,434	82.2%	15,657	82.6%	223	1.4%
Graduate	2,817	15.0%	2,777	14.6%	-40	-1.4%
First Professional	524	2.8%	526	2.8%	2	0.4%
U.S. Minorities	2,708	14.4%	2,876	15.2%	168	6.2%
Oregon Residents	15,278	81.4%	15,143	79.9%	-135	-0.9%
Non-Residents	3,497	18.6%	3,817	20.1%	320	9.2%
International	853	4.5%	899	4.7%	46	5.4%
Undergrad < 25	13,324	71.0%	13,538	71.4%	214	1.6%
Undergrad 25 and Older	2,110	11.2%	2,119	11.2%	9	0.4%
Graduate < 25	580	3.1%	554	2.9%	-26	-4.5%
Graduate 25 and Older	2,237	11.9%	2,223	11.7%	-14	-0.6%
First Professional < 25	219	1.2%	217	1.1%	-2	-0.9%
First Professional 25 and Older	305	1.6%	309	1.6%	4	1.3%

Enrollment by Academic Unit* and Student Level



Index

	Page
Academic Unit.....	1 – 5, 7 – 10
Age.....	1
Cascade Campus	
Enrollment.....	11
Class Standing.....	5 – 6, 8, 10
Extended Campus.....	8 – 9
Full Time, Part Time.....	1, 6
Gender.....	1, 5 – 7, 10
Highlights.....	12
International.....	1, 7
Major.....	2 – 4
Residency.....	1, 6, 8
Student Level.....	1 – 7, 9
University Honors College.....	10
U.S. Minorities/ Ethnicity.....	1, 7, 9

*Unduplicated headcount based upon student's primary college.

Enrollment by Major

The Enrollment by Major includes duplicate headcount totals for Colleges and the University. Included in the totals are students who have indicated a dual major or double degree program; e.g., Primary Major 1, Primary Major 2, Secondary Major 1, and Secondary Major 2; e.g., a first professional student could also have a secondary undergraduate major.

ACADEMIC UNIT	UNDER-GRAD	GRAD	TOTAL
<u>College of Agricultural Sciences</u>			
Agricultural and Resource Economics	-	32	32
Agricultural Business Management	79	-	79
Agricultural Education	-	6	6
Animal Science	-	14	14
Animal Sciences	381	-	381
Bioresource Research	29	1	30
Crop Science	-	15	15
Crop Science and Soil Science	31	-	31
Economics ¹	-	1	1
Environmental Economics, Policy and Management	11	-	11
Fisheries and Wildlife	186	-	186
Fisheries Science	-	54	54
Food Science and Technology	90	29	119
General Agriculture	101	-	101
Genetics	-	9	9
Horticulture	88	21	109
International Studies	4	-	4
Master of Agriculture	-	5	5
Poultry Science	-	1	1
Rangeland Ecology and Management	13	12	25
Soil Science	-	13	13
Toxicology	-	21	21
Wildlife Science	-	32	32
Non-Degree Agricultural Sciences	16	-	16
TOTAL	1,029	266	1,295

¹Joint program with CLA, FOR, AG.

<u>College of Business</u>			
Accountancy	140	-	140
Accounting	-	1	1
Business Administration	1,273	81	1,354
International Studies	2	-	2
Pre-Business	844	-	844
Non-Degree Business	33	-	33
TOTAL	2,292	82	2,374

<u>College of Education</u>			
Adult Education	-	50	50
College Student Services Administration	-	37	37
Counseling	-	51	51
Education	96	115	211
Pre-Education	837	2	839
Teaching: Elementary Education	-	52	52

ACADEMIC UNIT	UNDER-GRAD	GRAD	TOTAL
<u>College of Education (Cont.)</u>			
Teaching: Music Education	-	1	1
TOTAL	933	308	1,241

<u>College of Engineering</u>			
Bioengineering	39	-	39
Pre-Bioengineering	77	-	77
Biological and Ecological Engineering	-	10	10
Bioresource Engineering	-	5	5
Chemical Engineering	102	44	146
Pre-Chemical Engineering	127	-	127
Civil Engineering	166	74	240
Pre-Civil Engineering	237	-	237
Computer Engineering	35	-	35
Pre-Computer Engineering	29	-	29
Computer Science	162	99	261
Pre-Computer Science	200	-	200
Construction Engineering Management	169	7	176
Pre-Construction Engineering Management	251	-	251
Ecological Engineering	1	-	1
Pre-Ecological Engineering	8	-	8
Electrical and Computer Engineering	83	138	221
Pre-Electrical and Computer Engineering	177	-	177
Electrical and Electronics Engineering	121	-	121
Pre-Electrical Engineering	49	-	49
Engineering Physics	9	-	9
Pre-Engineering Physics	25	-	25
Environmental Engineering	18	-	18
Pre-Environmental Engineering	25	-	25
Pre-General Engineering	87	-	87
Industrial Engineering	78	30	108
Pre-Industrial Engineering	45	-	45
International Studies	2	-	2
Manufacturing Engineering	37	-	37
Pre-Manufacturing Engineering	10	-	10
Materials Science	-	23	23
Mechanical Engineering	268	52	320
Pre-Mechanical Engineering	313	-	313
Nuclear Engineering	26	21	47
Pre-Nuclear Engineering	54	1	55
Ocean Engineering	-	9	9
Radiation Health Physics	16	62	78
Pre-Radiation Health Physics	16	-	16
Non-Degree Pre-Engineering	21	1	22
TOTAL	3,083	576	3,659

ACADEMIC UNIT	UNDER-GRAD	GRAD	TOTAL
<u>College of Forestry</u>			
Forest Engineering	54	24	78
Forest Engineering - Civil Engineering	8	-	8
Pre-Forest/Civil Engineering	25	-	25
Forest Management	100	-	100
Forest Operations Management	25	-	25
Forest Recreation Resources	4	-	4
Forest Resources	-	45	45
Forest Science	-	51	51
Natural Resources	256	-	256
Outdoor Recreation Leadership and Tourism	12	-	12
Recreation Resource Management	50	-	50
Sustainable Natural Resources	-	5	5
Tourism and Outdoor Leadership	1	-	1
Wood Science	-	33	33
Wood Science and Technology	42	-	42
Non-Degree Forestry	27	1	28
TOTAL	604	159	763

Graduate School

Economics	-	12	12
Environmental Science	-	51	51
Interdisciplinary Studies	-	64	64
Molecular and Cellular Biology	-	42	42
Water Resources Engineering	-	17	17
Water Resources Policy and Management	-	13	13
Water Resources Science	-	13	13
Non-Degree Graduate Student	-	355	355
TOTAL	-	567	567

College of Health and Human Sciences

Apparel Design	57	-	57
Pre-Apparel	61	-	61
Design and Human Environment	-	30	30
Environmental Health Management	-	2	2
Exercise and Sport Science	811	49	860
Health Management and Policy	52	3	55
Pre-Health Management and Policy	75	-	75
Health Promotion and Education	1	-	1
Health Promotion and Health Behavior	144	-	144
Pre-Housing	37	-	37
Housing Studies	54	-	54
Human Development and Family Sciences	620	-	620
Human Development and Family Studies	-	31	31
Interior Design	115	-	115
Pre-Interiors	94	-	94

ACADEMIC UNIT	UNDER-GRAD	GRAD	TOTAL
<u>College of Health and Human Sciences (Cont.)</u>			
International Studies	5	-	5
Merchandising Management	270	-	270
Movement Studies in Disability	-	4	4
Nutrition and Food Management ²	280	12	292
Public Health	-	76	76
Non-Degree Health and Human Sciences	18	-	18
TOTAL	2,694	207	2,901

² Includes First Professional student(s).

College of Liberal Arts

American Studies	7	-	7
Anthropology	79	1	80
Applied Anthropology	-	26	26
Applied Ethics	-	3	3
Applied Visual Arts	234	-	234
Art ²	75	-	75
Contemporary Hispanic Studies	-	5	5
Creative Writing	-	18	18
Economics	58	14	72
English	242	15	257
Ethnic Studies	23	1	24
French ²	27	1	28
German	53	2	55
History	253	-	253
History of Science	-	7	7
International Studies	23	-	23
Liberal Studies	553	-	553
Music	119	-	119
Philosophy	57	-	57
Political Science	229	1	230
Pre-Communication	148	-	148
Psychology	506	3	509
Public Policy	-	25	25
Sociology	165	-	165
Spanish	100	-	100
Speech Communication ²	87	-	87
Non-Degree Liberal Arts	70	-	70
Undecided-College of Liberal Arts	4	-	4
TOTAL	3,112	122	3,234

² Includes First Professional student(s).

College of Oceanic and Atmospheric Sciences

Atmospheric Sciences	-	8	8
Geophysics	-	2	2
Marine Resource Management	-	29	29
Oceanography	-	50	50
TOTAL	-	89	89

ACADEMIC UNIT	UNDER-GRAD	GRAD	FIRST PROF	TOTAL
<u>College of Pharmacy</u>				
Pharmacy	-	22	-	22
Pharmacy, Doctor of Pharmacy (4-year)	-	-	334	334
TOTAL	-	22	334	356

<u>College of Science</u>				
Biochemistry and Biophysics	111	20	-	131
Biology	588	-	-	588
Botany	27	1	-	28
Botany and Plant Pathology	-	37	-	37
Chemistry	185	73	-	258
Computational Physics	7	-	-	7
Earth Science	19	-	-	19
Entomology	-	5	-	5
Environmental Science	206	-	-	206
General Science	828	1	-	829
Geography	39	33	-	72
Geology	47	27	-	74
International Studies	10	-	-	10
Mathematical Sciences	9	-	-	9
Mathematics	107	59	-	166
Mathematics Education	-	29	-	29
Medical Technology	11	-	-	11
Microbiology	138	22	-	160
Physics	58	35	-	93
Science Education	-	37	-	37
Statistics	-	36	-	36
Zoology	165	35	-	200
Non-Degree Science	53	2	-	55
Undecided Science Major	13	1	-	14
TOTAL	2,621	453	-	3,074

<u>College of Veterinary Medicine</u>				
Veterinary Medicine - DVM	-	-	192	192
Veterinary Science	-	4	-	4
TOTAL	-	4	192	196

<u>University Exploratory Studies</u>				
	787	-	-	787

<u>University Honors College³</u>				
Honors Scholar and Honors Associate	487	-	-	487
International Studies	3	-	-	3
	490	-	-	490

³Honors Scholars and Honors Associates are not counted in the University total.

	UNDER-GRAD	GRAD	FIRST-PROF.	TOTAL
TOTAL UNIVERSITY	17,158	2,855	526	20,539

Degree Programs with the Highest Enrollment (Last Year's Rank)

Undergraduate

1. Business Administration* (1)	2,117
2. Education* (4)	933
3. General Science (2)	828
4. Exercise and Sport Science (3)	811
5. Human Development and Family Sciences (7)	620
6. Biology (6)	588
7. Mechanical Engineering* (5)	581
8. Liberal Studies (8)	553
9. Psychology (9)	506
10. Construction Engineering Management* (11)	420

*Includes Pre-Professional

Graduate

1. Electrical and Computer Engineering (2)	138
2. Education (1)	117
3. Computer Science (3)	99
4. Business Administration (6)	81
5. Public Health (4)	76
6. Civil Engineering (7)	74
7. Chemistry (5)	73
8. Interdisciplinary Studies (11)	64
9. Radiation Health Physics (23)	62
10. Mathematics (9)	59

First Professional

1. Pharmacy, Doctor of Pharmacy (4-year)	334
2. Veterinary Medicine - DVM	192

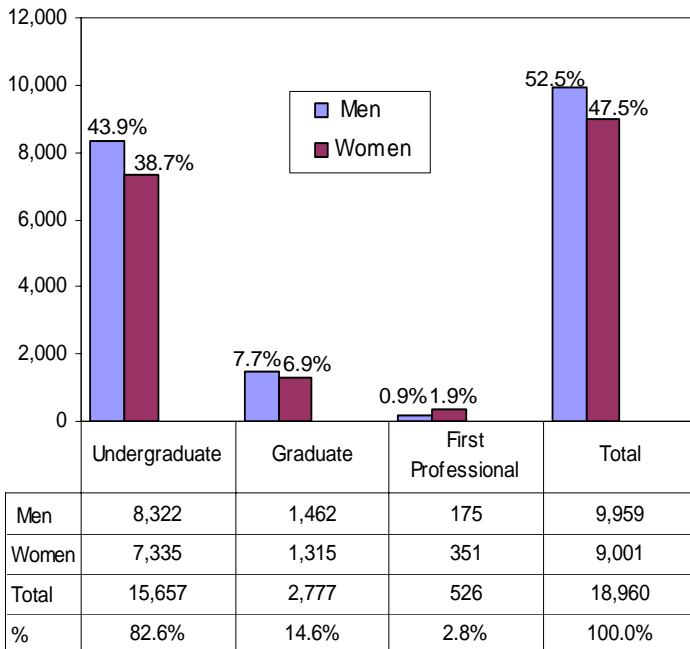
**Student Enrollment
By Academic Unit and Student Class Standing**

Academic Unit	Freshman	Sophomore	Junior	Senior	Post Bac	Non-Degree Undergrad	Undergrad Total	Master	Doctorate	Non-Degree Grad	Grad Total	First Professional	TOTAL
AG	169	200	224	342	45	16	996	132	130	-	262	-	1,258
BUS	450	459	508	737	20	33	2,207	79	-	1	80	-	2,287
ED	1	1	1	-	23	-	26	202	99	-	301	-	327
ENGR	650	616	592	1,088	53	21	3,020	329	227	-	556	-	3,576
FOR	55	80	137	260	40	27	599	72	72	5	149	-	748
HHS	429	617	633	849	25	18	2,571	115	89	3	207	-	2,778
LA	413	542	723	1,117	34	70	2,899	96	14	-	110	-	3,009
OC	-	-	-	-	-	-	-	43	44	-	87	-	87
PHARM	-	-	-	-	-	-	-	4	18	-	22	334	356
SCI	549	551	520	804	76	55	2,555	161	274	3	438	-	2,993
VM	-	-	-	-	-	-	-	4	-	-	4	192	196
GRAD	-	-	-	-	-	-	-	123	83	355	561	-	561
UESP	391	229	83	25	1	55	784	-	-	-	-	-	784
Total 2008	3,107	3,295	3,421	5,222	317	295	15,657	1,360	1,050	367	2,777	526	18,960
Total 2007	2,694	2,877	3,387	5,101	326	1,049	15,434	1,335	1,097	385	2,817	524	18,775

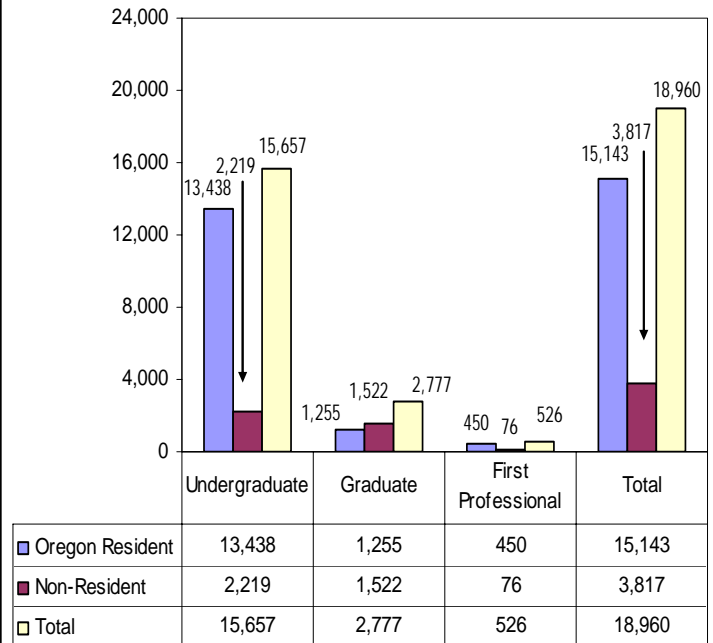
By Academic Unit, Gender, and Student Level

Academic Unit	Undergraduate				Graduate				First Professional				Total	%
	Men	Women	Total	% of Univ.	Men	Women	Total	% of Univ.	Men	Women	Total	% of Univ.		
AG	422	574	996	5.3%	139	123	262	1.4%	-	-	-	-	1,258	6.6%
BUS	1,405	802	2,207	11.6%	49	31	80	0.4%	-	-	-	-	2,287	12.1%
ED	9	17	26	0.1%	79	222	301	1.6%	-	-	-	-	327	1.7%
ENGR	2,612	408	3,020	15.9%	447	109	556	2.9%	-	-	-	-	3,576	18.9%
FOR	388	211	599	3.2%	98	51	149	0.8%	-	-	-	-	748	3.9%
HHS	608	1,963	2,571	13.6%	58	149	207	1.1%	-	-	-	-	2,778	14.7%
LA	1,317	1,582	2,899	15.3%	45	65	110	0.6%	-	-	-	-	3,009	15.9%
OC	-	-	-	-	43	44	87	0.5%	-	-	-	-	87	0.5%
PHARM	-	-	-	-	10	12	22	0.1%	140	194	334	1.8%	356	1.9%
SCI	1,141	1,414	2,555	13.5%	251	187	438	2.3%	-	-	-	-	2,993	15.8%
VM	-	-	-	-	2	2	4	0.0%	35	157	192	1.0%	196	1.0%
GRAD	-	-	-	-	241	320	561	3.0%	-	-	-	-	561	3.0%
UESP	420	364	784	4.1%	-	-	-	-	-	-	-	-	784	4.1%
Total 2008	8,322	7,335	15,657	82.6%	1,462	1,315	2,777	14.6%	175	351	526	2.8%	18,960	100.0%
Total 2007	8,241	7,193	15,434	82.2%	1,453	1,364	2,817	15.0%	174	350	524	2.8%	18,775	100.0%

Enrollment by Gender and Student Level



By Residency* and Student Level

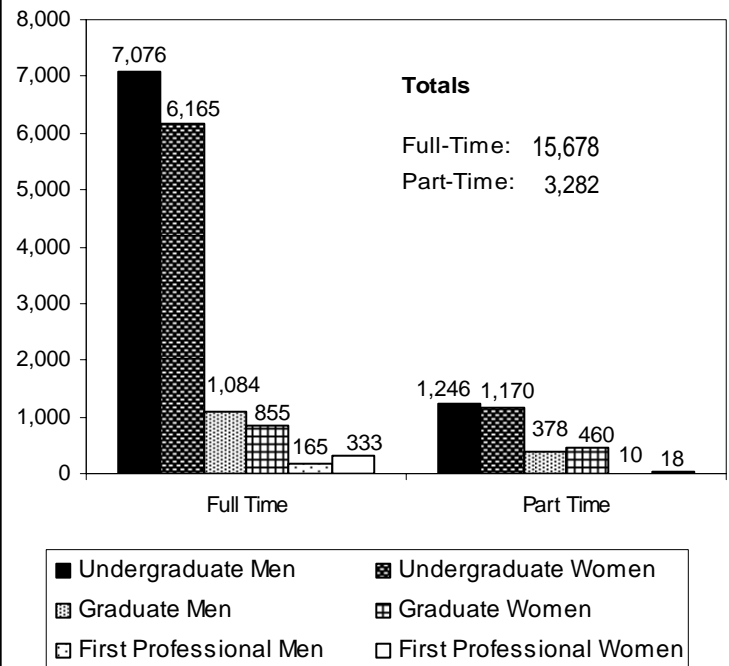


* Residency is based upon tuition and fee status.

Enrollment, Credit Hours, and FTE by Class Standing

Class Standing	Student Enrollment	Student Credit Hours	Student FTE
Freshman	3,107	44,053	2,936.9
Sophomore	3,295	45,498	3,033.2
Junior	3,421	46,803	3,120.2
Senior	5,222	69,347	4,623.1
Post Baccalaureate	317	3,001	200.1
Non-Degree Undergrad	295	1,988	132.5
Total for Undergraduate	15,657	210,690	14,046.0
Masters	1,360	14,675	1,222.9
Doctoral	1,050	12,884	1,431.6
Non-Degree Graduate	367	1,485	123.8
Total for Graduate	2,777	29,044	2,778.2
Doctor of Pharmacy	334	4,927	410.6
Veterinary Medicine	192	3,608	300.7
Total for First Professional	526	8,535	711.3
GRAND TOTAL	18,960	248,269	17,535.5

Student Enrollment Full Time and Part Time, by Gender

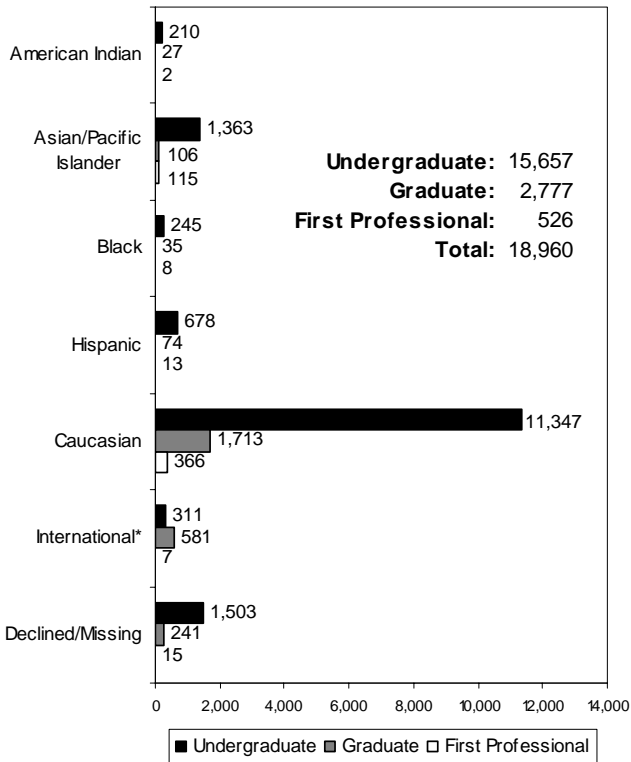


Minority Enrollment

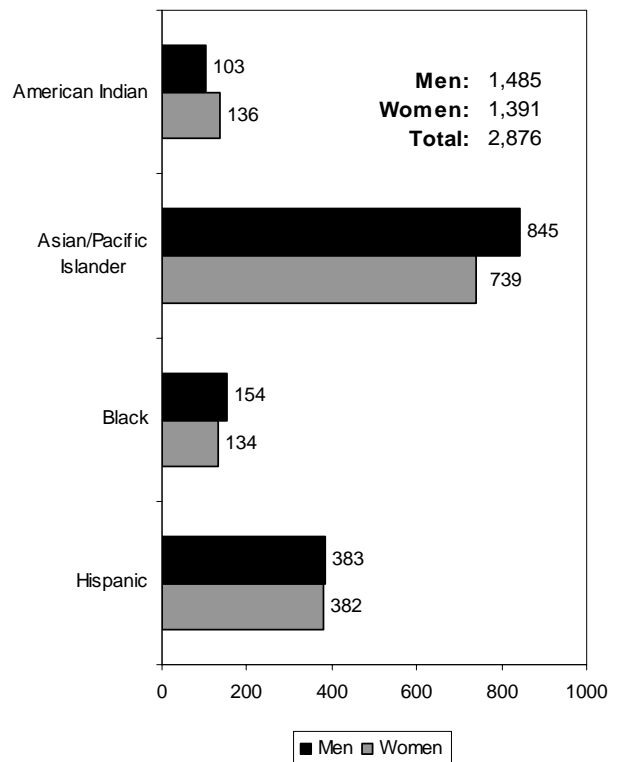
U.S. Minorities by Academic Unit and Student Level

Academic Unit	American Indian				Asian/ Pacific Islander				Black				Hispanic				TOTAL			
	Under-Grad	Grad	First Prof.	Total	Under-Grad	Grad	First Prof.	Total	Under-Grad	Grad	First Prof.	Total	Under-Grad	Grad	First Prof.	Total	Under-Grad	Grad	First Prof.	Total
Ag. Sciences	13	6	-	19	31	7	-	38	8	2	-	10	21	7	-	28	73	22	-	95
Business	26	1	-	27	227	3	-	230	27	3	-	30	82	-	-	82	362	7	-	369
Education	3	2	-	5	-	14	-	14	-	11	-	11	-	18	-	18	3	45	-	48
Engineering	27	1	-	28	284	26	-	310	24	3	-	27	100	9	-	109	435	39	-	474
Forestry	13	-	-	13	9	1	-	10	2	1	-	3	25	2	-	27	49	4	-	53
Graduate School	-	11	-	11	-	27	-	27	-	6	-	6	-	15	-	15	-	59	-	59
Health and Human Sci.	40	1	-	41	179	9	-	188	44	6	-	50	142	6	-	148	405	22	-	427
Liberal Arts	42	1	-	43	156	2	-	158	73	2	-	75	169	4	-	173	440	9	-	449
Oceanic and Atmos. Sci.	-	1	-	1	-	1	-	1	-	-	-	-	-	4	-	4	-	6	-	6
Pharmacy	-	-	-	-	-	2	110	112	-	-	7	7	-	1	11	12	-	3	128	131
Science	35	3	-	38	421	14	-	435	40	1	-	41	87	8	-	95	583	26	-	609
Univ. Explor. Studies	11	-	-	11	56	-	-	56	27	-	-	27	52	-	-	52	146	-	-	146
Vet. Medicine	-	-	2	2	-	-	5	5	-	-	1	1	-	-	2	2	-	-	10	10
Total	210	27	2	239	1,363	106	115	1,584	245	35	8	288	678	74	13	765	2,496	242	138	2,876

Ethnicity — All Students — by Level



U.S. Minorities by Gender



*International students are identified by Admit Type code.

OSU Extended Campus

Enrollment, Credit Hours, and FTE by Class Standing

Students Who Took Courses Through Ecampus*

<u>Class Standing</u>	<u>Student Enrollment</u>	<u>Student Credit Hours</u>	<u>Student FTE</u>
Freshman	244	676	45.1
Sophomore	377	1,403	93.5
Junior	588	2,612	174.1
Senior	1,054	5,068	337.9
Post Baccalaureate	88	428	28.5
Non-Degree Undergrad	177	718	47.9
Total for Undergraduate	2,528	10,905	727.0
Masters	195	1,071	89.3
Doctoral	47	226	25.1
Non-Degree Graduate	229	762	63.5
Total for Graduate	471	2,059	177.9
Doctor of Pharmacy	1	4	0.3
Veterinary Medicine	-	-	-
Total for First Professional	1	4	0.3
GRAND TOTAL (Winter 2008)	3,000	12,968	905.2
(Winter 2007)	2,837	11,452	799.9

*Table indicates students enrolled in courses offered not only through Ecampus, but also courses at OSU-Corvallis.

Enrollment by Class Standing and Residency

Students Who Took Courses Only Through Ecampus**

<u>Class Standing</u>	<u>Oregon Resident</u>	<u>Non-Resident</u>	<u>Total</u>
Freshman	12	18	30
Sophomore	31	29	60
Junior	109	64	173
Senior	242	126	368
Post Baccalaureate	11	41	52
Non-Degree Undergrad	38	107	145
Total for Undergraduate	443	385	828
Masters	116	47	163
Doctoral	14	30	44
Non-Degree Graduate	79	114	193
Total for Graduate	209	191	400
Doctor of Pharmacy	-	-	-
Veterinary Medicine	-	-	-
Total for First Professional	-	-	-
GRAND TOTAL (Winter 2008)	652	576	1,228
(Winter 2007)	658	446	1,104

**Table indicates students enrolled in only Ecampus-offered courses; i.e., students are not enrolled in any OSU-Corvallis on-campus courses.

Student Credit Hours by Academic Unit* and Class Standing

Academic Unit	Freshman	Sophomore	Junior	Senior	Post Bac	Non-Degree Undergrad	Undergrad Total	Master	Doctorate	Non-Degree Grad	Grad Total	First Professional	TOTAL
AG	44	123	274	803	137	107	1,488	1	-	121	122	-	1,610
BUS	-	8	72	68	4	-	152	-	-	-	-	-	152
ED	-	-	15	63	8	3	89	818	206	54	1,078	-	1,167
ENGR	-	-	-	-	-	3	3	150	10	56	216	-	219
FOR	3	9	37	92	21	25	187	7	3	50	60	-	247
HHS	62	116	113	195	7	16	509	-	-	6	6	-	515
LA	273	754	1,489	2,677	74	267	5,534	14	3	100	117	-	5,651
OC	26	42	77	167	21	12	345	-	-	-	-	-	345
SCI	258	325	509	865	144	271	2,372	81	4	375	460	4	2,836
ALS**	10	16	8	18	-	2	54	-	-	-	-	-	54
IP***	-	10	18	120	12	12	172	-	-	-	-	-	172
GRAD	-	-	-	-	-	-	-	-	-	-	-	-	-
Total SCH	676	1,403	2,612	5,068	428	718	10,905	1,071	226	762	2,059	4	12,968
Total FTE	45.1	93.5	174.1	337.9	28.5	47.9	727.0	89.3	25.1	63.5	177.9	0.3	905.2

*Academic Units are those that offered the courses. **Academic Learning Services. ***Interdisciplinary Programs.

OSU Extended Campus Student Enrollment by Academic Unit and Ethnicity

All Students Who Took Courses Through ECampus

Acad. Unit	American Indian /Alaskan Native		Asian /Pacific Islander		Black		Hispanic		White		International		Declined to Respond / Missing		TOTAL	
	Under-grad	Grad Total	Under-grad	Grad Total	Under-grad	Grad Total	Under-grad	Grad Total	Under-grad	Grad Total	Under-grad	Grad Total	Under-grad	Grad Total	Under-grad	Grad Total
AG	4	- 4	3	- 3	1	- 1	3	- 3	143	2 145	5	- 5	26	- 26	185	2 187
BUS	4	- 4	21	- 21	6	- 6	6	- 6	192	- 192	7	- 7	24	- 24	260	- 260
ED	2	1 3	- 4	4	- 3	3	- 9	9	4	130 134	- -	-	1	21 22	7	168 175
ENGR	4	- 4	13	1 14	2	1 3	4	3 7	107	25 132	14	2 16	13	6 19	157	38 195
FOR	5	- 5	1	- 1	- -	-	10	- 10	187	8 195	3	- 3	42	- 42	248	8 256
HHS	5	- 5	17	- 17	8	- 8	13	- 13	235	5 240	5	- 5	35	1 36	318	6 324
LA	15	1 16	38	- 38	32	- 32	37	- 37	558	- 558	6	- 6	96	- 96	782	1 783
PHARM*	-	- -	- 1	1	- -	-	- -	-	- -	- -	- -	- -	- -	- -	- 1	1
SCI	11	2 13	48	- 48	9	- 9	19	- 19	284	16 300	6	- 6	64	2 66	441	20 461
GRAD	-	3 3	- 13	13	- 4	4	- 3	3	- 139	139	- 2	2	- 64	64	- 228	228
UESP	1	- 1	11	- 11	10	- 10	2	- 2	83	- 83	1	- 1	22	- 22	130	- 130
Total	51	7 58	152	19 171	68	8 76	94	15 109	1,793	325 2,118	47	4 51	323	94 417	2,528	472 3,000

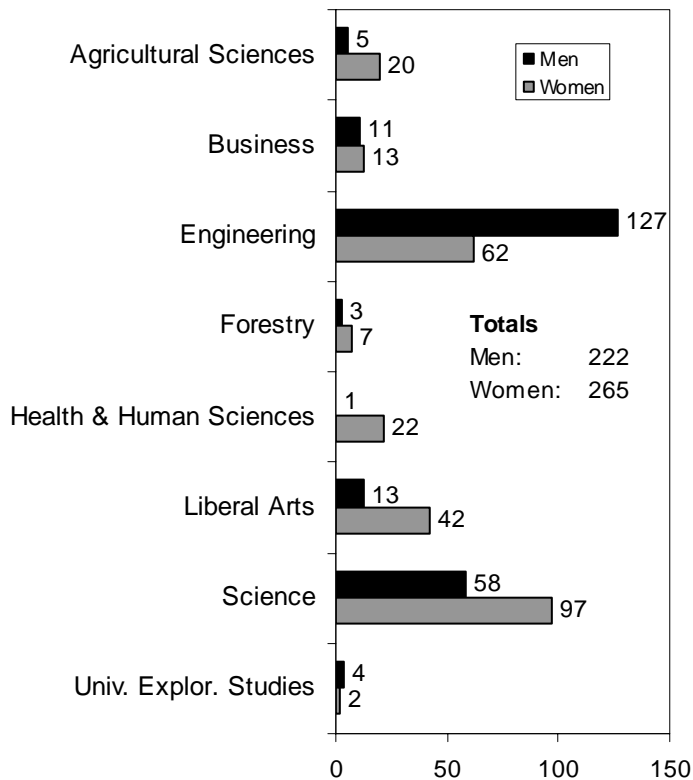
*First Professional students are included in the graduate totals.

University Honors College Students By Academic Unit and Student Class Standing

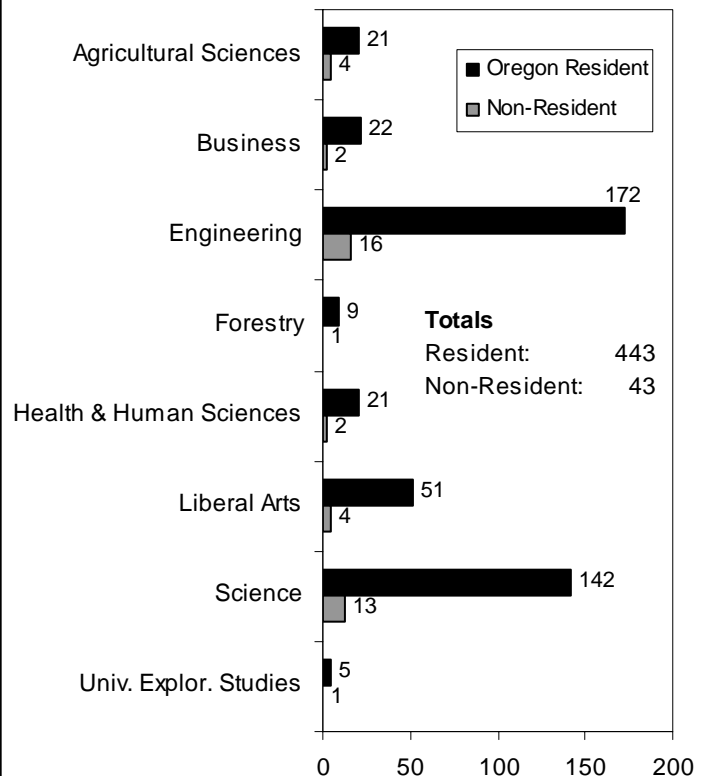
Academic Unit	Freshman	Sophomore	Junior	Senior	Total	% of Undergrad Enrollment for College
Agricultural Sciences	3	6	8	8	25	2.5
Business	1	4	6	13	24	1.1
Engineering	22	35	48	84	189	6.3
Forestry	3	1	2	4	10	1.7
Health and Human Sciences	2	4	5	12	23	0.9
Liberal Arts	6	10	13	26	55	1.9
Science	11	25	41	78	155	6.1
University Exploratory Studies	3	-	2	1	6	0.8
TOTAL*	51	85	125	226	487	3.1

*The total may include students who are participating in MECOP, Study Abroad, or other experiential learning programs.

By Academic Unit and Gender



By Academic Unit and Residency



Cascades Campus Enrollment

Winter Term 2008				
Tier	Enrollment Type	Institution Providers	Headcount	Term FTE
1 & 2*	OSU-Cascades	OSU, UO	555	273.2
Total OSU-Cascades Enrollment			555	273.2
3**	OSU Admitted Non-Enrolled	COCC	135	95.7
Total Students Receiving Services			690	368.9

Oregon State University – Cascades Campus, Tier 1 and Tier 2

Gender	Headcount	Percent
Female	357	64.3%
Male	198	35.7%
Full-Time, Part-Time		
Full-Time	119	21.4%
Part-Time	436	78.6%
Level		
Undergraduate	480	86.5%
Graduate	75	13.5%
Residency		
Oregon Residents	528	95.1%
Non-Residents	27	4.9%
Level and Age Group		
Undergraduate < 25	262	47.2%
Undergraduate 25 and older	218	39.3%
Graduate 25 and older	66	11.9%
Graduate <25	9	1.6%
Ethnicity		
Black	2	0.4%
American Indian/Alaskan Native	11	2.0%
Asian / Pacific Islander	5	0.9%
Hispanic	18	3.2%
Total for U.S. Minorities	36	6.5%
White	436	78.6%
International	2	0.4%
Declined to Respond / Missing	81	14.6%
GRAND TOTAL	555	100.0%

Student Class Standing	Headcount	Credit Hours	FTE
Freshman	7	38	2.5
Sophomore	29	97	6.5
Junior	103	586	39.1
Senior	160	1,201	80.1
Postbac Degree Seeking	3	17	1.1
Non-Degree Undergraduate	178	1,397	93.1
Subtotal for Undergraduate	480	3,336	222.4
Masters	72	593	49.4
Non-Degree Graduate	3	17	1.4
Subtotal for Graduate	75	610	50.8
TOTAL	555	3,946	273.2

*Source: Office of Institutional Research, Oregon State University.

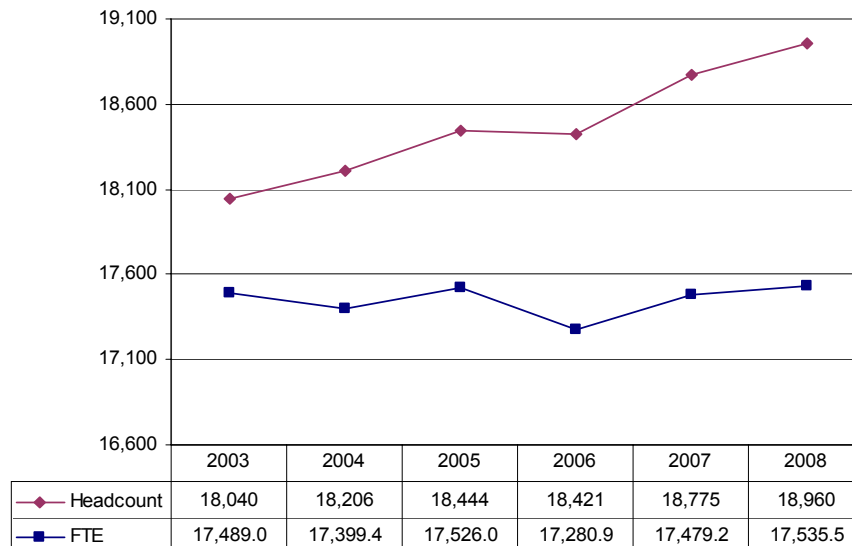
**Source: OSU-Cascades.

Highlights

- When Winter 2007 and Winter 2008 are compared, the total enrollment increased by 185 students, or 1.0% (from 18,775 to 18,960). At the same time, the total student FTE increased by 56.3, or 0.3% (from 17,479.2 to 17,535.5), and the student credit hours increased by 1,094, or 0.4% (from 247,175 to 248,269).
- When compared to Winter 2007, the undergraduate enrollment increased by 223 students, or 1.4% (from 15,434 to 15,657); the graduate enrollment decreased by 1.4% (from 2,817 to 2,777); the first professional enrollment increased by 0.4% (from 524 to 526).
- When compared to Winter 2007, Oregon residents decreased by 0.9%; non-residents increased by 9.2%.
- International student enrollment increased by 5.4%.
- For Winter 2008, the percentage of U.S. minority students was 15.2% of the total enrollment. The number of minority students increased by 6.2% when compared to Winter 2007 (from 2,708 to 2,876).
- The College of Engineering, College of Liberal Arts, and College of Science had the largest student enrollments (3,576, 3,009, and 2,993 respectively) when compared to the other academic units.

- OSU Extended Campus had 3,000 students, an increase of 5.7% compared to Winter 2007. These students took 12,968 credits, of which 43.6% were from the College of Liberal Arts, while 21.9% were from the College of Science.
- During Winter 2008, a total of 690 students received services from OSU Cascades Campus.
- Other increases that occurred when comparing Winter 2007 and Winter 2008 are as follows:
 - Undergraduate students under age 25: 1.6%
 - Part-time students: 1.4%
 - First Professional students 25 and older: 1.3%
 - Female students: 1.1%
 - Male students: 0.9%
 - Full-time students: 0.9%
 - Undergraduate students age 25 and older: 0.4%
- Other decreases that occurred when comparing Winter 2007 and Winter 2008 are as follows:
 - Graduate students under age 25: -4.5%
 - First Professional students under age 25: -0.9%
 - Graduate students age 25 and older: -0.6%

Winter Enrollment Trend 2003-2008



Source: Winter Term 2008, 4th Week Student Data Extract File.

Comments about this publication are welcome.

Please contact the staff in the Office of Academic Planning & Assessment, Kerr Administration Building (541-737-9600).