

## Enrollment Summary Summer Term 2006



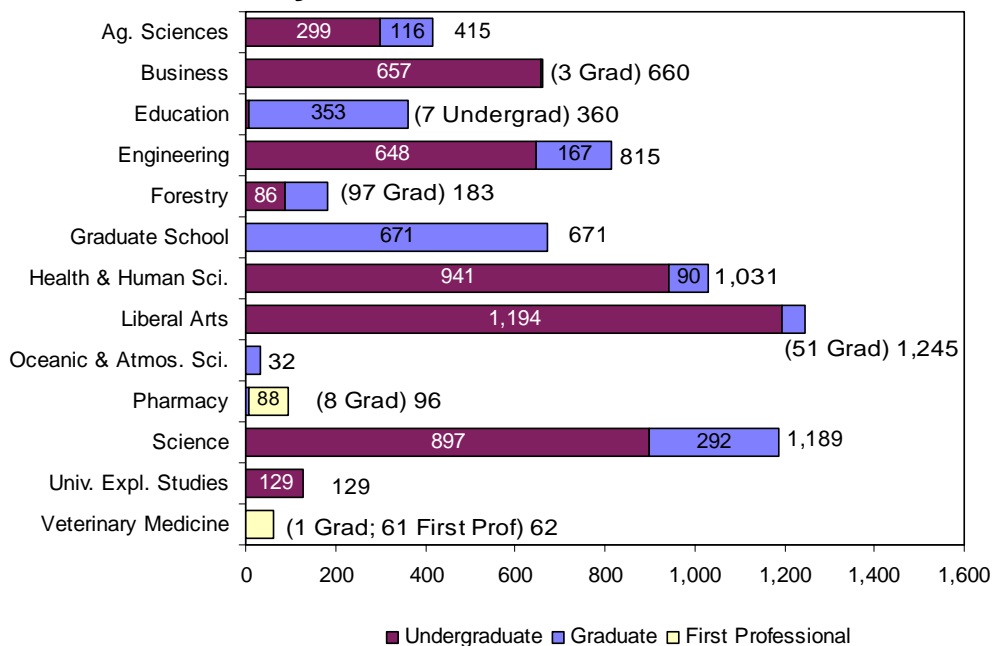
Office of Institutional Research • No. 4 • October 2006 • <http://oregonstate.edu/admin/aa/ir/enrollmentsum.html>

### Enrollment at-a-Glance

	2005	2006	Change	% Change
Total Enrollment (Headcount)	6,849	6,888	39	0.6%
Total Student FTE *	3,938.9	3,800.4	-138.6	-3.5%
Total Student Credit Hours*	54,419	51,975	-2,444	-4.5%

	2005		2006		Change	
	Headcount	Percent	Headcount	Percent	Headcount	Percent
Women	3,805	55.6%	3,827	55.6%	22	0.6%
Men	3,044	44.4%	3,061	44.4%	17	0.6%
Full-Time	2,199	32.1%	2,141	31.1%	-58	-2.6%
Part-Time	4,650	67.9%	4,747	68.9%	97	2.1%
Undergraduate	4,910	71.7%	4,858	70.5%	-52	-1.1%
Graduate	1,795	26.2%	1,881	27.3%	86	4.8%
First Professional	144	2.1%	149	2.2%	5	3.5%
U.S. Minorities	963	14.1%	1,015	14.7%	52	5.4%
Oregon Residents	5,277	77.0%	5,263	76.4%	-14	-0.3%
Other U.S.	1,189	17.4%	1,253	18.2%	64	5.4%
International	383	5.6%	372	5.4%	-11	-2.9%
Undergrad < 25	3,915	57.2%	3,808	55.3%	-107	-2.7%
Undergrad 25 and older	995	14.5%	1,050	15.2%	55	5.5%
Graduate < 25	265	3.9%	300	4.4%	35	13.2%
Graduate 25 and older	1,530	22.3%	1,581	23.0%	51	3.3%
First Professional < 25	25	0.4%	36	0.5%	11	44.0%
First Professional 25 and older	119	1.7%	113	1.6%	-6	-5.0%

### Enrollment by Academic Unit\* and Student Level



### Index

	Page
Academic Unit .....	1-5, 8-11
Age .....	1
Cascades Campus .....	12
Class Standing .....	2, 9-10
Enrollment Trend .....	14
Extended Campus .....	10-11
Full Time, Part Time .....	1, 12
Gender .....	1, 5-6, 8-9, 12
Geographic Origin .....	7
Highlights .....	14
Major .....	3-5
New Students .....	2
Residency .....	1, 6, 9-10, 12
Session Comparisons .....	13
Student Credit Hours .....	1-2, 10, 12
Student Level .....	1, 3-6, 8, 11-12
University Honors College .....	9
U.S Minorities .....	1, 8, 11-12

Source: Summer Term 2006, End of Term Student Data Extract File.

\*Unduplicated headcount based upon student's primary major 1.

### New Students

New Undergraduate Students from High School		New Graduate and First Professional Students	
Oregon High Schools	27	Masters	107
U.S. High Schools	22	Doctoral	14
International	3	PharmD	-
Unknown	2	Veterinary Medicine - DVM	-
<b>Total</b>	<b>54</b>	<b>Total</b>	<b>121</b>
New Undergraduate Transfer Students		New Non-Degree and Post-Baccalaureate Students	
Oregon Community Colleges	56	Non-Degree Undergrad	249
OUS Institutions	8	Post Baccalaureate	15
Oregon Private Institutions	-	Non-Degree Graduate	296
Out-of-State Institutions	36	<b>Total</b>	<b>560</b>
Foreign Country Institutions	-		
Unknown	2		
<b>Total</b>	<b>102</b>	<b>Total New Students</b>	<b>837</b>
		<b>Re-Admit Students</b>	<b>170</b>
		<b>Continuing Students</b>	<b>5,881</b>
		<b>GRAND TOTAL</b>	<b>6,888</b>

### Enrollment By Academic Unit and Student's Class Standing

Academic Unit*	Fresh- man	Sopho- more	Junior	Senior	Post Bac	**Non- degree Undergrad	Under- grad Total	Master	Doctor- ate	**Non- degree Grad	Grad Total	First Profes- sional	TOTAL
Ag. Sciences	7	29	80	150	21	12	299	62	51	3	116	-	415
Business	41	77	165	328	21	25	657	2	-	1	3	-	660
Education	-	-	-	-	7	-	7	241	105	7	353	-	360
Engineering	37	99	141	342	13	16	648	92	75	-	167	-	815
Forestry	2	7	15	54	2	6	86	51	45	1	97	-	183
Health and Human Sci.	30	112	243	506	13	37	941	56	32	2	90	-	1,031
Liberal Arts	38	126	307	592	12	119	1,194	35	8	8	51	-	1,245
Oceanic and Atmos. Sci.	-	-	-	-	-	-	-	13	19	-	32	-	32
Pharmacy	-	-	-	-	-	-	-	-	8	-	8	88	96
Science	40	123	200	371	48	115	897	96	190	6	292	-	1,189
Vet. Medicine	-	-	-	-	-	-	-	1	-	-	1	61	62
Univ. Expl. Studies	44	45	17	12	-	11	129	-	-	-	-	-	129
Graduate School	-	-	-	-	-	-	-	33	26	612	671	-	671
<b>Total</b>	<b>239</b>	<b>618</b>	<b>1,168</b>	<b>2,355</b>	<b>137</b>	<b>341</b>	<b>4,858</b>	<b>682</b>	<b>559</b>	<b>640</b>	<b>1,881</b>	<b>149</b>	<b>6,888</b>

\*Academic Units are students' primary colleges or schools. \*\*Includes all non-admit students.

### Student Credit Hours By Academic Unit and Student's Class Standing

College/School/Program*	Fresh- man	Sopho- more	Junior	Senior	Post Bac	Non- degree Undergrad	Under- grad Total	Master	Doctor- ate	Non- degree Grad	Grad Total	First Profes- sional	TOTAL
Ag. Sciences	16	62	177	598	116	110	1,079	558	290	443	1,291	30	2,400
Business	-	199	790	1,582	155	28	2,754	8	8	52	68	-	2,822
Education	2	8	29	201	23	12	275	1,892	794	805	3,491	-	3,766
Engineering	20	83	220	617	32	36	1,008	353	318	33	704	-	1,712
Forestry	-	-	19	52	1	-	72	436	361	3	800	-	872
Health and Human Sci.	130	313	1,053	3,605	60	67	5,228	437	202	32	671	7	5,906
Liberal Arts	703	1,894	3,711	7,696	210	766	14,980	420	83	428	931	22	15,933
Oceanic and Atmos. Sci.	-	14	28	90	9	18	159	72	112	3	187	-	346
Pharmacy	-	-	3	-	-	-	3	-	37	-	37	1,115	1,155
Science	568	1,914	3,184	4,806	489	846	11,807	781	1,627	1,089	3,497	7	15,311
Vet. Medicine	-	-	-	-	-	-	-	9	-	-	9	741	750
ALS**	124	15	28	35	-	6	208	-	-	-	-	-	208
Defense Education	-	54	60	94	-	-	208	-	-	-	-	-	208
Graduate School	-	-	-	-	-	-	-	25	4	-	29	-	29
Interdisc. Prog.	3	-	27	95	-	3	128	18	21	-	39	-	167
Overseas Study	-	48	38	202	-	45	333	9	-	9	18	-	351
Univ. Honors Coll.	-	-	14	25	-	-	39	-	-	-	-	-	39
<b>Total</b>	<b>1,566</b>	<b>4,604</b>	<b>9,381</b>	<b>19,698</b>	<b>1,095</b>	<b>1,937</b>	<b>38,281</b>	<b>5,018</b>	<b>3,857</b>	<b>2,897</b>	<b>11,772</b>	<b>1,922</b>	<b>51,975</b>
<b>Total FTE</b>	<b>104.4</b>	<b>306.9</b>	<b>625.4</b>	<b>1,313.2</b>	<b>73.0</b>	<b>129.1</b>	<b>2,552.1</b>	<b>418.2</b>	<b>428.6</b>	<b>241.4</b>	<b>1,088.1</b>	<b>160.2</b>	<b>3,800.4</b>

\*Colleges/Schools/Programs are those that offered the courses. \*\*Academic Learning Services.

## Enrollment by Major

The Enrollment by Major includes duplicate headcount totals for Colleges and the University. Included in the totals are students who have indicated a dual major or double degree program; e.g., Primary Major 1, Primary Major 2, Secondary Major 1, and Secondary Major 2; e.g., a first professional student could also have a secondary undergraduate major.

ACADEMIC UNIT	UNDER-GRAD	GRAD	TOTAL
<b><u>College of Agricultural Sciences</u></b>			
Agricultural and Resource Economics	-	6	6
Agricultural Business Management	9	-	9
Agricultural Education	-	4	4
Animal Science	-	10	10
Animal Sciences	87	-	87
Bioresource Research	13	1	14
Crop Science	-	5	5
Crop Science and Soil Science	4	-	4
Environmental Economics, Policy and Management	7	-	7
Fisheries and Wildlife	54	1	55
Fisheries Science	-	11	11
Food Science and Technology	29	25	54
General Agriculture	21	-	21
Genetics	-	5	5
Horticulture	16	2	18
Master of Agriculture	-	1	1
Natural Resources	48	-	48
Rangeland Ecology and Management	-	1	1
Rangeland Resources	1	7	8
Soil Science	-	8	8
Toxicology	-	17	17
Wildlife Science	-	12	12
Non-Degree Agricultural Sciences	12	3	15
<b>TOTAL</b>	<b>301</b>	<b>119</b>	<b>420</b>

<b><u>College of Business</u></b>			
Accounting	3	-	3
Business Administration	649	4	653
Non-Degree Business	24	1	25
<b>TOTAL</b>	<b>676</b>	<b>5</b>	<b>681</b>

<b><u>College of Education</u></b>			
Adult Education	-	33	33
College Student Services Administration	-	7	7
Counseling	-	74	74
Education	25	151	176
Pre-Education	128	-	128
Teaching English to Speakers of Other Languages	-	8	8
Teaching: Agricultural Education	-	4	4
Teaching: Elementary Education	-	60	60
Teaching: Family and Consumer Sciences Ed	-	4	4

ACADEMIC UNIT	UNDER-GRAD	GRAD	TOTAL
<b><u>College of Education (Cont.)</u></b>			
Teaching: Health Education	-	1	1
Teaching: Language Arts Education	-	7	7
Teaching: Music Education	-	6	6
<b>TOTAL</b>	<b>153</b>	<b>355</b>	<b>508</b>

<b><u>College of Engineering</u></b>			
Bioengineering	12	-	12
Pre-Bioengineering	18	-	18
Bioresource Engineering	-	1	1
Chemical Engineering	19	2	21
Pre-Chemical Engineering	32	-	32
Civil Engineering	33	20	53
Pre-Civil Engineering	32	-	32
Computer Engineering	15	-	15
Pre-Computer Engineering	26	-	26
Computer Science	71	46	117
Pre-Computer Science	53	-	53
Construction Engineering Management	31	1	32
Pre-Construction Engineering Management	43	-	43
Electrical and Computer Engineering	-	56	56
Electrical and Electronics Engineering	49	-	49
Pre-Electrical Engineering	52	-	52
Pre-Engineering Physics	4	-	4
Environmental Engineering	4	-	4
Pre-Environmental Engineering	6	-	6
Pre-General Engineering	3	-	3
Industrial Engineering	6	6	12
Pre-Industrial Engineering	15	-	15
International Studies	3	-	3
Manufacturing Engineering	3	-	3
Pre-Manufacturing Engineering	3	-	3
Materials Science	-	4	4
Mechanical Engineering	36	16	52
Pre-Mechanical Engineering	51	-	51
Nuclear Engineering	9	8	17
Pre-Nuclear Engineering	14	-	14
Ocean Engineering	-	1	1
Radiation Health Physics	6	14	20
Pre-Radiation Health Physics	6	-	6
Non-Degree Pre-Engineering	16	-	16
<b>TOTAL</b>	<b>671</b>	<b>175</b>	<b>846</b>

ACADEMIC UNIT	UNDER-GRAD	GRAD	TOTAL
<b><u>College of Forestry</u></b>			
Forest Engineering	4	23	27
Forest Engineering - Civil Engineering	1	-	1
Pre-Forest/Civil Engineering	1	-	1
Forest Management	8	-	8
Forest Recreation Resources	4	-	4
Forest Resources	-	22	22
Forest Science	-	43	43
Natural Resources	42	-	42
Outdoor Recreation Leadership and Tourism	1	-	1
Recreation Resource Management	12	-	12
Wood Science	-	14	14
Wood Science and Technology	7	-	7
Non-Degree Forestry	6	1	7
Undecided Forestry	1	-	1
<b>TOTAL</b>	<b>87</b>	<b>103</b>	<b>190</b>

<b><u>Graduate School</u></b>			
Environmental Science	-	11	11
Interdisciplinary Studies	-	23	23
Molecular and Cellular Biology	-	20	20
Plant Physiology	-	2	2
Water Resources Policy and Management	-	1	1
Water Resources Science	-	2	2
Non-Degree Graduate Student	-	612	612
<b>TOTAL</b>	<b>-</b>	<b>671</b>	<b>671</b>

<b><u>College of Health and Human Sciences</u></b>			
Apparel Design	27	-	27
Pre-Apparel	13	-	13
Pre-Concurrent International Studies	1	-	1
Design and Human Environment	-	5	5
Environmental Health and Occupational Safety Management	-	3	3
Environmental Health Management	-	1	1
Exercise and Sport Science	256	28	284
Health Care Administration	19	2	21
Pre-Health Care Administration	26	-	26
Health Management and Policy	7	-	7
Pre-Health Management and Policy	2	-	2
Health Promotion and Health Behavior	80	-	80
Pre-Housing	13	-	13
Housing Studies	6	-	6
Human Development and Family Sciences	237	-	237
Human Development and Family Studies	-	6	6
Interior Design	35	-	35
Pre-Interiors	15	-	15

ACADEMIC UNIT	UNDER-GRAD	GRAD	TOTAL
<b><u>College of Health and Human Sciences (Cont.)</u></b>			
International Studies	2	-	2
Merchandising Management	120	-	120
Movement Studies in Disability	-	1	1
Nutrition and Food Management	88	6	94
Public Health	-	38	38
Non-Degree Health and Human Sciences	37	-	37
<b>TOTAL</b>	<b>984</b>	<b>90</b>	<b>1,074</b>

<b><u>College of Liberal Arts</u></b>			
American Studies	2	-	2
Anthropology	46	-	46
Applied Anthropology	-	8	8
Applied Ethics	-	2	2
Applied Visual Arts	64	-	64
Art	45	-	45
Creative Writing	-	2	2
Economics	29	9	38
English	75	16	91
Ethnic Studies	17	-	17
French	17	-	17
German	16	-	16
History	89	-	89
History of Science	-	2	2
International Studies	13	-	13
Liberal Studies	225	-	225
Music	31	1	32
Philosophy	25	-	25
Political Science	84	-	84
Pre-Communication	97	-	97
Psychology	170	1	171
Public Policy	-	5	5
Sociology	71	-	71
Spanish	30	-	30
Speech Communication	43	-	43
Non-Degree Liberal Arts	119	8	127
Undecided-College of Liberal Arts	3	-	3
<b>TOTAL</b>	<b>1,311</b>	<b>54</b>	<b>1,365</b>

<b><u>College of Oceanic and Atmospheric Sciences</u></b>			
Atmospheric Sciences	-	4	4
Marine Resource Management	-	7	7
Oceanography	-	21	21
<b>TOTAL</b>	<b>-</b>	<b>32</b>	<b>32</b>

ACADEMIC UNIT	UNDER-		FIRST	TOTAL
	GRAD	GRAD	PROF	
<b><u>College of Pharmacy</u></b>				
Pharmacy	-	8	-	8
Pharmacy, Doctor of Pharmacy (4-year)	-	-	88	88
<b>TOTAL</b>	<b>-</b>	<b>8</b>	<b>88</b>	<b>96</b>
<b><u>College of Science</u></b>				
Applied Physics	-	2	-	2
Biochemistry and Biophysics	31	18	-	49
Biology	176	-	-	176
Botany	4	-	-	4
Botany and Plant Pathology	-	24	-	24
Chemistry	47	64	-	111
Computational Physics	4	-	-	4
Earth Science	3	-	-	3
Entomology	-	1	-	1
Environmental Science	80	-	-	80
General Science	276	1	-	277
Geography	14	14	-	28
Geology	17	6	-	23
International Studies	10	-	-	10
Mathematical Sciences	5	-	-	5
Mathematics	35	25	-	60
Mathematics Education	-	20	-	20
Medical Technology	5	-	-	5
Microbiology	49	19	-	68
Natural Resources	12	-	-	12
Physics	18	16	-	34
Science Education	-	40	-	40
Statistics	-	7	-	7
Zoology	44	37	-	81
Non-Degree Science	113	5	-	118
Undecided Science Major	1	-	-	1
<b>TOTAL</b>	<b>944</b>	<b>299</b>	<b>-</b>	<b>1,243</b>

ACADEMIC UNIT	UNDER-		FIRST	TOTAL
	GRAD	GRAD	PROF	
<b><u>College of Veterinary Medicine</u></b>				
Veterinary Medicine - DVM	-	-	61	61
Veterinary Science	-	1	-	1
<b>TOTAL</b>	<b>-</b>	<b>1</b>	<b>61</b>	<b>62</b>

<b><u>University Exploratory Studies Program</u></b>				
University Exploratory Studies	129	-	-	129
<b>TOTAL</b>	<b>129</b>	<b>-</b>	<b>-</b>	<b>129</b>

<b><u>University Honors College<sup>1</sup></u></b>				
Honors Scholar and Honors Associate	108	-	-	108
<b>TOTAL</b>	<b>108</b>	<b>-</b>	<b>-</b>	<b>108</b>

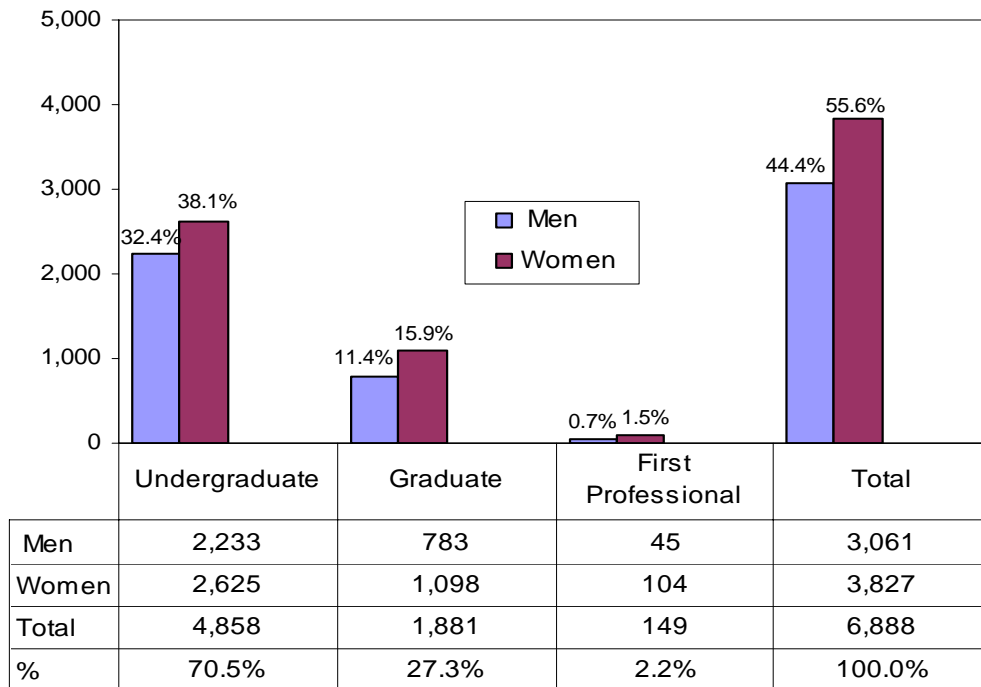
<sup>1</sup>Honors Scholars and Honors Associates are not counted in the University total.

TOTAL UNIVERSITY	UNDER-		FIRST	TOTAL
	GRAD	GRAD	PROF	
	5,256	1,912	149	7,317

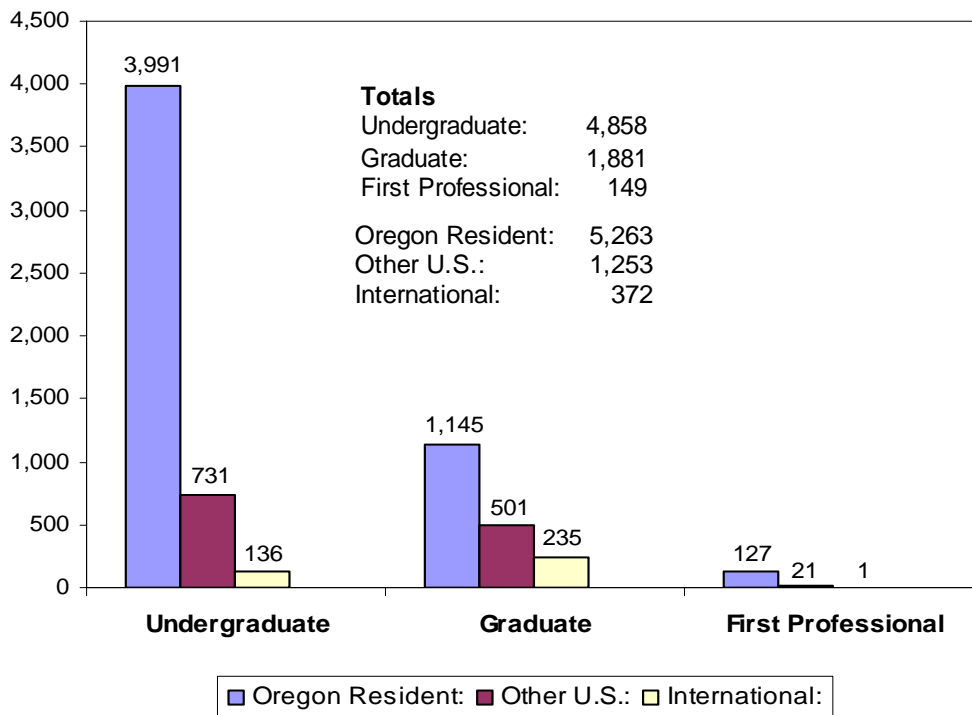
### Enrollment by Academic Unit, Gender, and Student Level

Academic Unit	Undergraduate				Graduate				First Professional				Total	%
	Men	Women	Total	% of Univ.	Men	Women	Total	% of Univ.	Men	Women	Total	% of Univ.		
AG	123	176	299	4.3%	50	66	116	1.7%	-	-	-	-	415	6.0%
BUS	398	259	657	9.5%	2	1	3	0.0%	-	-	-	-	660	9.6%
ED	1	6	7	0.1%	84	269	353	5.1%	-	-	-	-	360	5.2%
ENGR	541	107	648	9.4%	137	30	167	2.4%	-	-	-	-	815	11.8%
FOR	51	35	86	1.2%	59	38	97	1.4%	-	-	-	-	183	2.7%
HHS	175	766	941	13.7%	29	61	90	1.3%	-	-	-	-	1,031	15.0%
LA	501	693	1,194	17.3%	17	34	51	0.7%	-	-	-	-	1,245	18.1%
OC	-	-	-	-	18	14	32	0.5%	-	-	-	-	32	0.5%
PHARM	-	-	-	-	2	6	8	0.1%	32	56	88	1.3%	96	1.4%
SCI	375	522	897	13.0%	158	134	292	4.2%	-	-	-	-	1,189	17.3%
VM	-	-	-	-	1	-	1	0.0%	13	48	61	0.9%	62	0.9%
UESP	68	61	129	1.9%	-	-	-	-	-	-	-	-	129	1.9%
GRAD	-	-	-	-	226	445	671	9.7%	-	-	-	-	671	9.7%
<b>Total 2006</b>	<b>2,233</b>	<b>2,625</b>	<b>4,858</b>	<b>70.5%</b>	<b>783</b>	<b>1,098</b>	<b>1,881</b>	<b>27.3%</b>	<b>45</b>	<b>104</b>	<b>149</b>	<b>2.2%</b>	<b>6,888</b>	<b>100.0%</b>
<b>Total 2005</b>	<b>2,269</b>	<b>2,641</b>	<b>4,910</b>	<b>71.7%</b>	<b>743</b>	<b>1,052</b>	<b>1,795</b>	<b>26.2%</b>	<b>32</b>	<b>112</b>	<b>144</b>	<b>2.1%</b>	<b>6,849</b>	<b>100.0%</b>

## Enrollment by Gender and Student Level



## Enrollment by Residency\* and Student Level



\* Residency is based upon tuition and fee status.

## Enrollment by Geographic Origin

### Oregon

Baker	14
Benton	824
Clackamas	408
Clatsop	40
Columbia	38
Coos	67
Crook	25
Curry	16
Deschutes	234
Douglas	120
Gilliam	2
Grant	5
Harney	3
Hood River	26
Jackson	134
Jefferson	18
Josephine	63
Klamath	66
Lake	13
Lane	423
Lincoln	72
Linn	321
Malheur	25
Marion	492
Morrow	5
Multnomah	772
Polk	76
Sherman	3
Tillamook	27
Umatilla	57
Union	25
Wallowa	6
Wasco	27
Washington	500
Yamhill	117

**Total for Oregon** ..... 5,064

### United States

Alabama	6
Alaska	37
Arizona	31
Arkansas	3
California	323
Colorado	35
Connecticut	5
District of Columbia	3
Florida	21
Georgia	9
Hawaii	96
Idaho	39
Illinois	32
Indiana	8

Iowa	9
Kansas	7
Kentucky	3
Louisiana	5
Maine	4
Maryland	7
Massachusetts	9
Michigan	18
Minnesota	21
Mississippi	2
Missouri	11
Montana	37
Nebraska	7
Nevada	35
New Hampshire	3
New Jersey	10
New Mexico	31
New York	39
North Carolina	11
Ohio	12
Oklahoma	2
Pennsylvania	19
Rhode Island	4
South Carolina	19
South Dakota	3
Tennessee	8
Texas	26
Utah	25
Vermont	2
Virginia	23
Washington	258
West Virginia	4
Wisconsin	18
Wyoming	16

**Total for U.S. States** ..... 1,356

### Foreign Countries\*

Albania	1
Argentina	1
Australia	3
Azerbaijan	1
Bangladesh	1
Belarus	1
Bolivia	1
Bosnia and Herzegovina	1
Brazil	2
Bulgaria	1
Cameroon	1
Canada	19
Chile	4
China, Peoples Republic Of	58
Colombia	2
Costa Rica	1
Croatia	2
Ecuador	3

Ethiopia	1
Finland	1
France	2
Germany	5
Ghana	1
Greece	1
Hong Kong	5
India	42
Indonesia	14
Iran	2
Ireland	1
Israel	1
Jamaica	1
Japan	46
Kenya	1
Kuwait	20
Latvia	1
Lithuania	1
Malaysia	4
Moldova	1
Morocco	1
Netherlands	3
New Zealand	1
Niger	1
Nigeria	1
Paraguay	1
Peru	4
Philippines	3
Poland	1
Portugal	1
Romania	2
Russia	4
Saudi Arabia	7
Senegal	1
Serbia	4
Slovakia	1
South Africa	1
South Korea	35
Spain	1
Sri Lanka	1
Sweden	2
Taiwan, Republic of China	19
Thailand	18
Togo	1
Turkey	10
Turks & Caicos Islands	1
Ukraine	4
United Kingdom	5
Uruguay	1
Vietnam	5
Yemen	1
Zimbabwe	2

**Total for Foreign Countries** .... 397

**Unknown** ..... 71

**GRAND TOTAL** ..... 6,888

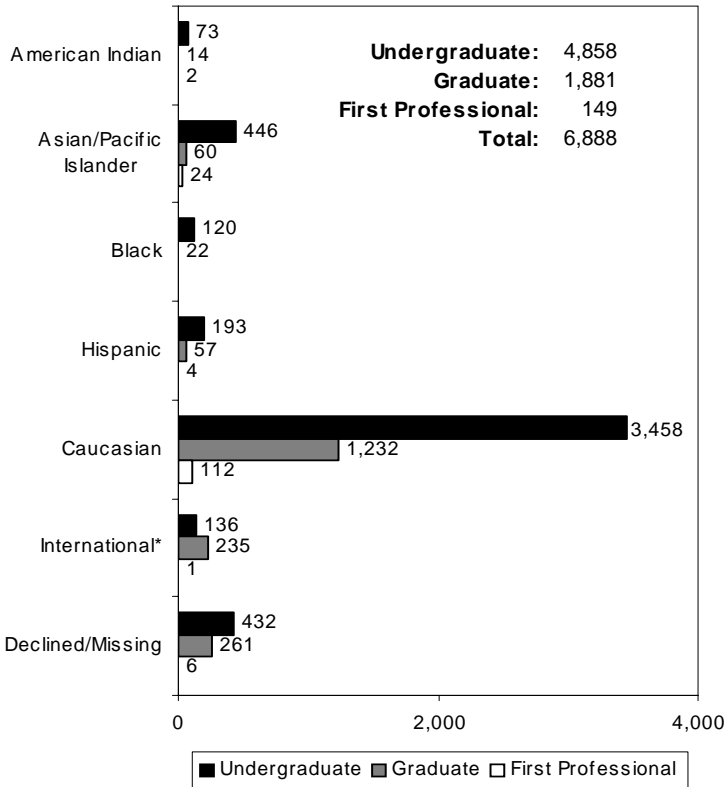
\*Foreign countries are based upon country of citizenship.

## Minority Enrollment

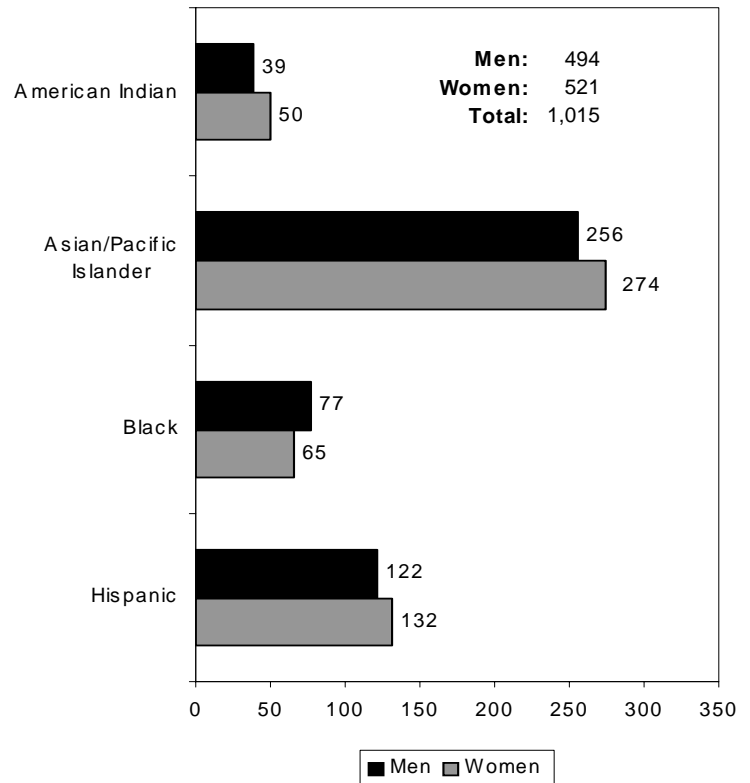
### U.S. Minorities by Academic Unit and Student Level

Academic Unit	American Indian				Asian/Pacific Islander				Black				Hispanic				TOTAL			
	Under-Grad	Grad	First Prof.	Total	Under-Grad	Grad	First Prof.	Total	Under-Grad	Grad	First Prof.	Total	Under-Grad	Grad	First Prof.	Total	Under-Grad	Grad	First Prof.	Total
Ag. Sciences	8	1	-	9	11	3	-	14	-	-	-	-	13	1	-	14	32	5	-	37
Business	4	-	-	4	65	-	-	65	15	-	-	15	21	-	-	21	105	-	-	105
Education	-	4	-	4	1	12	-	13	-	13	-	13	-	25	-	25	1	54	-	55
Engineering	7	1	-	8	67	9	-	76	6	1	-	7	21	1	-	22	101	12	-	113
Forestry	5	-	-	5	4	1	-	5	-	1	-	1	2	-	-	2	11	2	-	13
Graduate School	-	5	-	5	-	20	-	20	-	3	-	3	-	20	-	20	-	48	-	48
Health and Human Sci.	11	-	-	11	64	5	-	69	22	1	-	23	40	1	-	41	137	7	-	144
Liberal Arts	20	1	-	21	60	1	-	61	49	1	-	50	57	1	-	58	186	4	-	190
Oceanic and Atmos. Sci.	-	-	-	-	-	-	-	-	-	-	-	-	-	-	-	-	-	-	-	-
Pharmacy	-	-	2	2	-	-	22	22	-	-	-	-	-	-	3	3	-	-	27	27
Science	17	2	-	19	161	9	-	170	17	2	-	19	34	8	-	42	229	21	-	250
Univ. Explor. Studies	1	-	-	1	13	-	-	13	11	-	-	11	5	-	-	5	30	-	-	30
Vet. Medicine	-	-	-	-	-	-	2	2	-	-	-	-	-	-	1	1	-	-	3	3
<b>Total</b>	<b>73</b>	<b>14</b>	<b>2</b>	<b>89</b>	<b>446</b>	<b>60</b>	<b>24</b>	<b>530</b>	<b>120</b>	<b>22</b>	<b>-</b>	<b>142</b>	<b>193</b>	<b>57</b>	<b>4</b>	<b>254</b>	<b>832</b>	<b>153</b>	<b>30</b>	<b>1,015</b>

### Ethnicity — All Students — by Level



### U.S. Minorities by Gender



\*International students are identified by residency code.

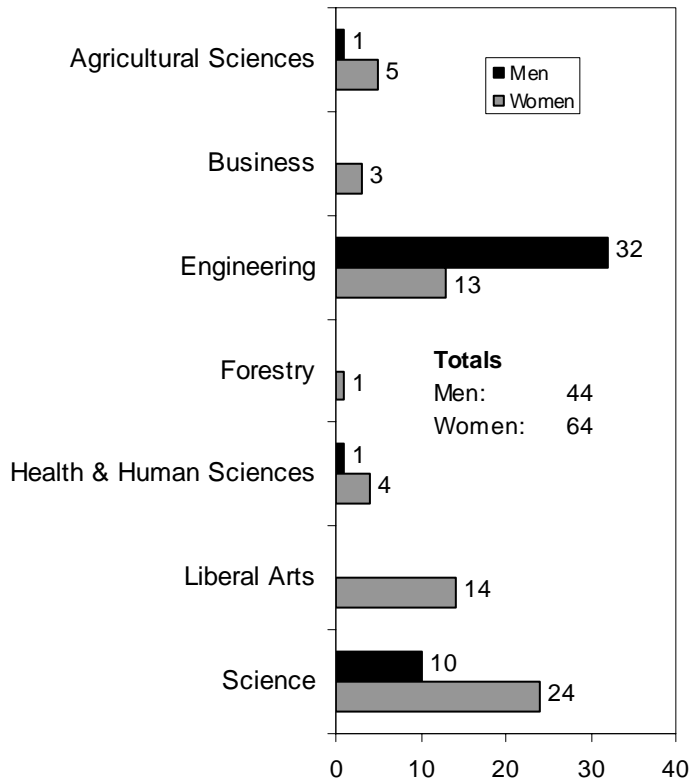


**University Honors College Students  
By Academic Unit and Student Class Standing**

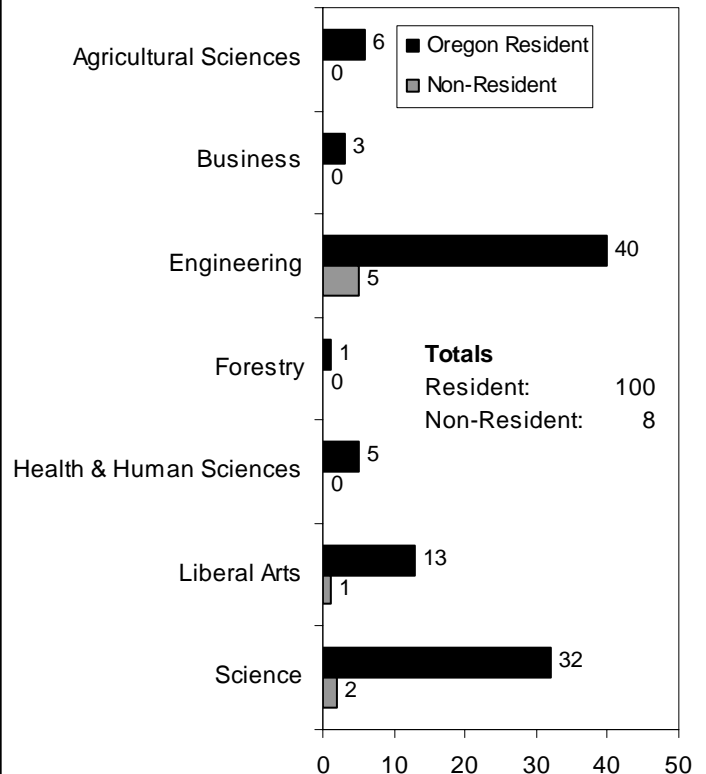
Academic Unit	Freshman	Sophomore	Junior	Senior	Total	% of Undergrad Enrollment for College
Agricultural Sciences	-	2	1	3	6	2.0
Business	-	-	1	2	3	0.5
Engineering	-	4	16	25	45	6.9
Forestry	-	-	-	1	1	1.2
Health and Human Sciences	-	-	3	2	5	0.5
Liberal Arts	-	-	6	8	14	1.2
Science	-	5	9	20	34	3.8
<b>TOTAL*</b>	-	<b>11</b>	<b>36</b>	<b>61</b>	<b>108</b>	<b>2.2</b>

\*The total may include students who are participating in MECOP, Study Abroad, or other experiential learning programs.

**By Academic Unit and Gender**



**By Academic Unit and Residency**



**OSU Extended Campus**

**Enrollment, Credit Hours, and FTE  
by Class Standing**

Students Who Took Courses Through Ecampus\*

<u>Class Standing</u>	<u>Student Enrollment</u>	<u>Student Credit Hours</u>	<u>Student FTE</u>
Freshman	58	217	14.5
Sophomore	166	745	49.7
Junior	326	1,536	102.4
Senior	859	4,283	285.5
Post Baccalaureate	47	224	14.9
Non-Degree Undergrad	163	683	45.5
<b>Total for Undergraduate</b>	<b>1,619</b>	<b>7,688</b>	<b>512.5</b>
Masters	98	504	42.0
Doctoral	22	73	8.1
Non-Degree Graduate	307	979	81.6
<b>Total for Graduate</b>	<b>427</b>	<b>1,556</b>	<b>131.7</b>
Doctor of Pharmacy	6	21	1.8
Veterinary Medicine	10	34	2.8
<b>Total for First Professional</b>	<b>16</b>	<b>55</b>	<b>4.6</b>
<b>GRAND TOTAL (Summer 2006)</b>	<b>2,062</b>	<b>9,299</b>	<b>648.8</b>
(Summer 2005)	1,963	8,554	598.7

\*Table indicates students enrolled in courses offered through Ecampus, but also courses at OSU-Corvallis.

**Enrollment by Class Standing  
and Residency**

Students Who Took Courses Only Through Ecampus\*\*

<u>Class Standing</u>	<u>Oregon Resident</u>	<u>Other U.S.</u>	<u>International</u>	<u>Total</u>
Freshman	33	7	-	40
Sophomore	74	21	2	97
Junior	143	30	1	174
Senior	377	84	8	469
Post Baccalaureate	14	19	2	35
Non-Degree Undergrad	52	86	-	138
<b>Total for Undergraduate</b>	<b>693</b>	<b>247</b>	<b>13</b>	<b>953</b>
Masters	57	12	1	70
Doctoral	6	9	-	15
Non-Degree Graduate	192	89	-	281
<b>Total for Graduate</b>	<b>255</b>	<b>110</b>	<b>1</b>	<b>366</b>
Doctor of Pharmacy	5	-	-	5
Veterinary Medicine	6	4	-	10
<b>Total for First Professional</b>	<b>11</b>	<b>4</b>	<b>-</b>	<b>15</b>
<b>GRAND TOTAL (Summer 2006)</b>	<b>959</b>	<b>361</b>	<b>14</b>	<b>1,334</b>
(Summer 2005)	904	311	8	1,223

\*\*Table indicates students enrolled in only Ecampus-offered courses; i.e., students are not enrolled in any OSU-Corvallis on-campus courses.

**Student Credit Hours by Academic Unit\* and Class Standing**

<u>Academic Unit</u>	<u>Freshman</u>	<u>Sophomore</u>	<u>Junior</u>	<u>Senior</u>	<u>Post Bac</u>	<u>Non-Degree Undergrad</u>	<u>Undergrad Total</u>	<u>Master</u>	<u>Doctorate</u>	<u>Non-Degree Grad</u>	<u>Grad Total</u>	<u>First Professional</u>	<u>TOTAL</u>
AG	16	50	128	353	81	83	711	10	-	229	239	30	980
BUS	-	12	84	324	16	24	460	4	-	12	16	-	476
ED	-	-	3	29	3	3	38	436	57	280	773	-	811
ENGR	-	-	-	-	-	-	-	6	2	3	11	-	11
FOR	-	-	2	9	1	-	12	-	-	3	3	-	15
HHS	32	70	120	304	9	21	556	-	-	5	5	6	567
LA	115	482	949	2,668	81	369	4,664	27	10	225	262	16	4,942
OC	-	14	20	74	9	18	135	10	-	3	13	-	148
SCI	51	115	218	482	24	162	1,052	11	4	219	234	3	1,289
ALS**	-	2	6	4	-	-	12	-	-	-	-	-	12
IP***	3	-	6	36	-	3	48	-	-	-	-	-	48
<b>Total SCH</b>	<b>217</b>	<b>745</b>	<b>1,536</b>	<b>4,283</b>	<b>224</b>	<b>683</b>	<b>7,688</b>	<b>504</b>	<b>73</b>	<b>979</b>	<b>1,556</b>	<b>55</b>	<b>9,299</b>
<b>Total FTE</b>	<b>14.5</b>	<b>49.7</b>	<b>102.4</b>	<b>285.5</b>	<b>14.9</b>	<b>45.5</b>	<b>512.5</b>	<b>42.0</b>	<b>8.1</b>	<b>81.6</b>	<b>131.7</b>	<b>4.6</b>	<b>648.8</b>

\*Academic Units are those that offered the courses. \*\*Academic Learning Services. \*\*\*Interdisciplinary Programs.

### OSU Extended Campus Student Enrollment by Academic Unit and Ethnicity All Students Who Took Courses Through ECampus

Acad. Unit	American Indian /Alaskan Native		Asian /Pacific Islander		Black		Hispanic		White		International		Declined to Respond / Missing		TOTAL	
	Under-grad	Grad Total	Under-grad	Grad Total	Under-grad	Grad Total	Under-grad	Grad Total	Under-grad	Grad Total	Under-grad	Grad Total	Under-grad	Grad Total	Under-grad	Grad Total
AG	4	- 4	2	- 2	-	-	8	- 8	114	3 117	5	1 6	10	1 11	143	5 148
BUS	-	-	23	- 23	2	- 2	6	- 6	169	1 170	10	- 10	19	- 19	229	1 230
ED	-	1 1	1	2 3	-	1 1	-	3 3	2	82 84	-	2 2	-	11 11	3	102 105
ENGR	1	- 1	19	- 19	2	- 2	4	- 4	168	4 172	9	- 9	15	1 16	218	5 223
FOR	4	- 4	1	- 1	-	-	-	-	31	- 31	-	-	10	1 11	46	1 47
HHS	2	- 2	12	- 12	4	- 4	9	- 9	195	1 196	2	- 2	13	- 13	237	1 238
LA	10	- 10	23	- 23	12	- 12	20	- 20	359	1 360	1	- 1	53	1 54	478	2 480
PHARM*	-	-	-	1 1	-	-	-	-	-	4 4	-	-	-	1 1	-	6 6
SCI	3	- 3	29	- 29	5	1 6	6	1 7	149	8 157	8	- 8	30	1 31	230	11 241
VM*	-	-	-	1 1	-	-	-	-	-	9 9	-	-	-	-	-	10 10
GRAD	-	2 2	-	5 5	-	2 2	-	7 7	-	203 203	-	-	-	80 80	-	299 299
UESP	1	- 1	3	- 3	2	- 2	1	- 1	23	- 23	2	- 2	3	- 3	35	- 35
<b>Total</b>	<b>25</b>	<b>3 28</b>	<b>113</b>	<b>9 122</b>	<b>27</b>	<b>4 31</b>	<b>54</b>	<b>11 65</b>	<b>1,210</b>	<b>316 1,526</b>	<b>37</b>	<b>3 40</b>	<b>153</b>	<b>97 250</b>	<b>1,619</b>	<b>443 2,062</b>

\*First Professional students are included in the graduate totals.

## Cascades Campus Enrollment

Summer Term 2006				
Tier	Enrollment Type	Institution Providers	Headcount	Term FTE
1 & 2*	OSU-Cascades	OSU, EOU, UO	193	96.2
<b>Total OSU-Cascades Enrollment</b>			<b>193</b>	<b>96.2</b>
3**	OSU Admitted Non-Enrolled	COCC	35	12.4
<b>Total Students Receiving Services</b>			<b>228</b>	<b>109</b>

### Oregon State University – Cascades Campus, Tier 1 and Tier 2

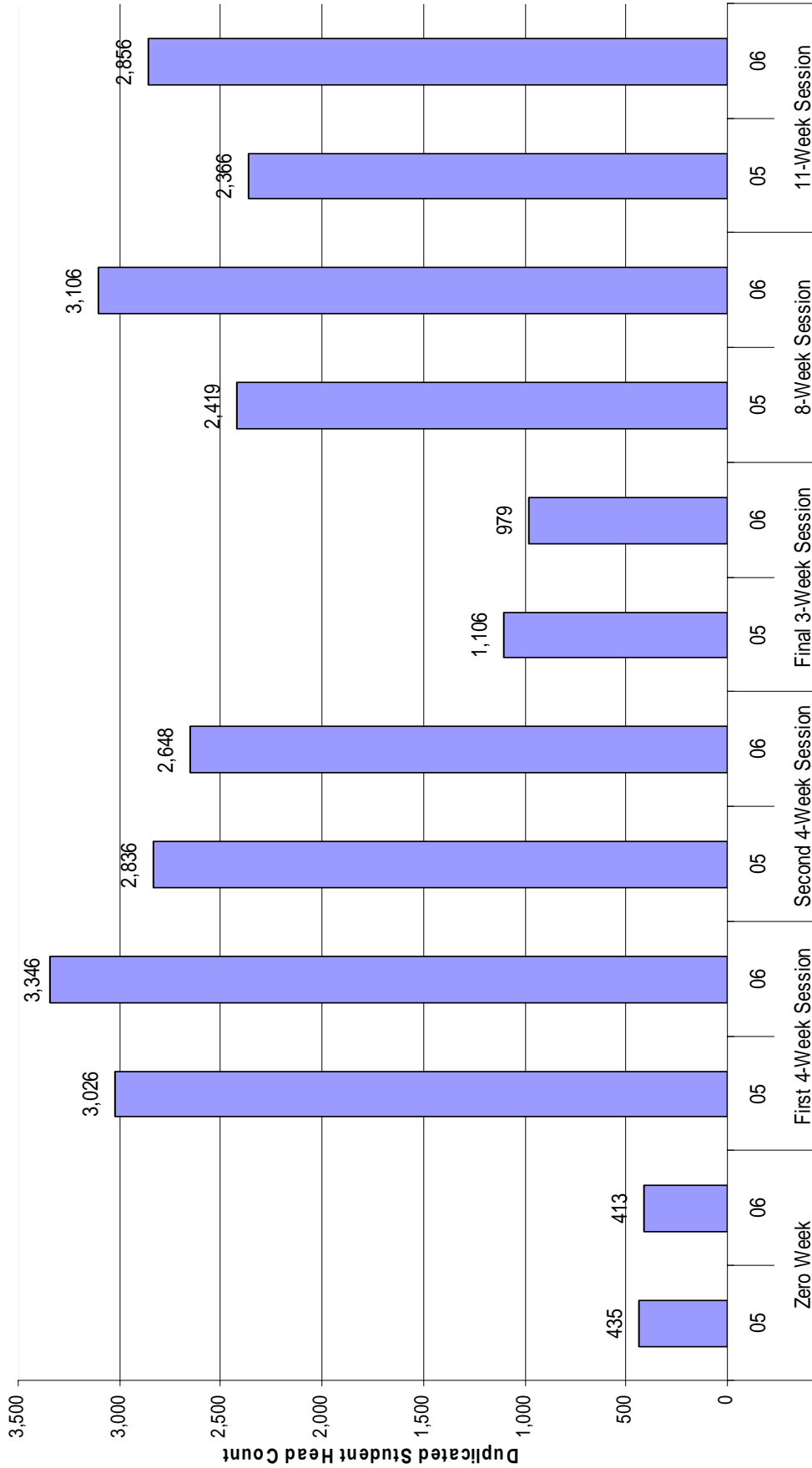
Gender	Headcount	Percent
Female	148	76.7%
Male	45	23.3%
Full-Time, Part-Time	Headcount	Percent
Full-Time	33	17.1%
Part-Time	160	82.9%
Level	Headcount	Percent
Undergraduate	121	62.7%
Graduate	72	37.3%
Residency	Headcount	Percent
Oregon Residents	182	94.3%
Non Residents	11	5.7%
Level and Age Group	Headcount	Percent
Undergraduate < 25	43	22.3%
Undergraduate 25 and older	78	40.4%
Graduate <25	5	2.6%
Graduate 25 and older	67	34.7%
Ethnicity	Headcount	Percent
Black	0	0.0%
American Indian/Alaskan Native	4	2.1%
Asian / Pacific Islander	2	1.0%
Hispanic	4	2.1%
<b>Total for U.S. Minorities</b>	<b>10</b>	<b>5.2%</b>
White	150	77.7%
Declined to Respond / Missing	32	16.6%
International	1	0.5%
<b>GRAND TOTAL</b>	<b>193</b>	<b>100.0%</b>

Student Class Standing	Headcount	Credit Hours	FTE
Freshman	1	4	0.3
Sophomore	0	0	0.0
Junior	23	176	11.7
Senior	74	439	29.3
Postbac Degree Seeking	8	42	2.8
Non-Degree Undergraduate	15	60	4.0
<b>Subtotal for Undergraduate</b>	<b>121</b>	<b>721</b>	<b>48.1</b>
Masters	70	565	47.1
Non-Degree Graduate	2	12	1.0
<b>Subtotal for Graduate</b>	<b>72</b>	<b>577</b>	<b>48.1</b>
<b>TOTAL</b>	<b>193</b>	<b>1,298</b>	<b>96.2</b>

\*Source: Institutional Research Service, Oregon University Systems.

\*\*Source: OSU-Cascades.

## Summer Session Comparisons: 2005 and 2006



### Summer 2006

- Zero week (Intercession) (Session 6).....June 19 - 23
- Eleven week classes (Section 1).....June 26 - September 8
- First four weeks (Session 2).....June 26 - July 21
- Eight week Classes (Session 3).....June 26 - August 18
- Second four weeks (Session 4).....July 24 - August 18
- Final three week (Session 5).....August 21 - September 8

### Summer 2005

- Zero week (Intercession) (Session 6).....June 13 - 17
- Eleven week classes (Section 1).....June 20 - September 2
- First four weeks (Session 2).....June 20 - July 15
- Eight week Classes (Session 3).....June 20 - August 12
- Second four weeks (Session 4).....July 18 - August 12
- Final three week (Session 5).....August 15 - September 2

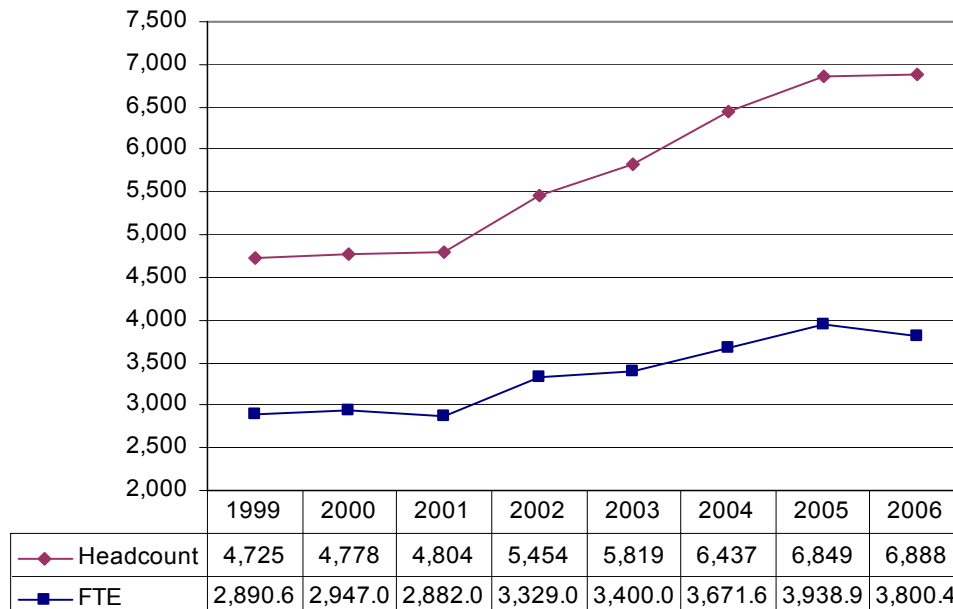
## Highlights

- The Summer Session 2006 total enrollment of 6,888 was 39 more than Summer 2005 - an increase of 0.6%.
- There were more female students than male students in Summer 2006. Female students accounted for 55.6% of total students, while male students accounted for 44.4%.
- 68.9% of students were enrolled on a part-time basis.
- The College of Liberal Arts had the largest unduplicated student enrollment (1,245) when compared to the other academic units.
- About 60.1% of the total student credit hours (51,975) were from the College of Liberal Arts (30.7%) and the College of Science (29.5%).
- OSU Extended Campus had a total enrollment of 2,062 students. These students were enrolled for 9,299 credit hours. About 53.1% of those credit hours were from the College of Liberal Arts.
- Only 54 new undergraduate students from high school enrolled for courses.
- The percentage of U.S. minority students was 14.7%.

- More students (3,346) enrolled in the First 4-Week Session (June 26 - July 21). The 8-Week Session (June 26 - August 18) had (3,106) students (second-largest enrollment).
- Most popular majors for Summer 2006 were:
 

<b>Undergraduate</b>	
Business Administration .....	649
General Science .....	276
Exercise and Sport Science .....	256
Human Development and Family Sciences .....	237
Liberal Studies .....	225
<b>Graduate</b>	
Non-degree Graduate .....	630
Education .....	151
Counseling .....	74
Chemistry .....	64
Teaching: Elementary Education .....	60
<b>First Professional</b>	
Pharmacy, Doctor of Pharmacy (4-year) .....	88
Veterinary Medicine - DVM .....	61

## Summer Session Enrollment Trend 1999-2006



Source: Summer 2003 - 2006, End of Term Student Extract File; Summer 1999 - 2002, Student Data Warehouse as of 3/14/2003.