

## Enrollment Summary Spring Term 2006

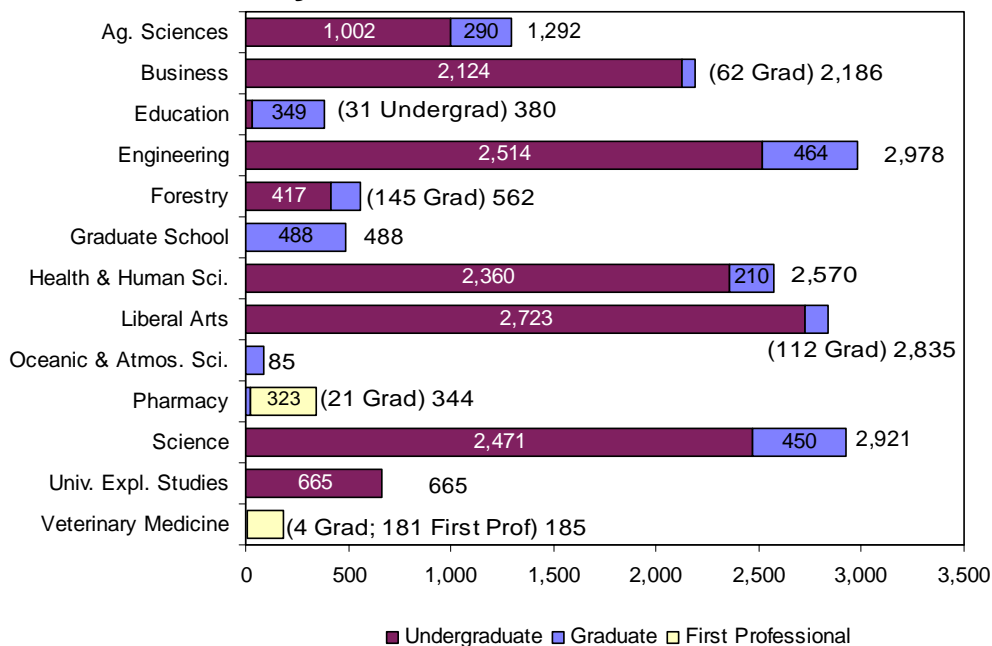


### Enrollment at-a-Glance

	2005	2006	Change	% Change	*Spring Term 2006 uses the OUS definition, which excludes credit hours and FTE for students who withdrew from courses before the 4th week. Agribusiness credits at EOU are also not included.
<b>Total Enrollment (Headcount)</b>	17,491	17,491	0	0.0%	
<b>Total Student FTE *</b>	16,463.0	16,250.3	-212.8	-1.3%	
<b>Total Student Credit Hours*</b>	233,143	229,598	-3,545	-1.5%	

	2005		2006		Change	
	Headcount	Percent	Headcount	Percent	Headcount	Percent
<b>Women</b>	8,423	48.2%	8,470	48.4%	47	0.6%
<b>Men</b>	9,068	51.8%	9,021	51.6%	-47	-0.5%
<b>Full-Time</b>	14,726	84.2%	14,423	82.5%	-303	-2.1%
<b>Part-Time</b>	2,765	15.8%	3,068	17.5%	303	11.0%
<b>Undergraduate</b>	14,345	82.0%	14,307	81.8%	-38	-0.3%
<b>Graduate</b>	2,701	15.4%	2,680	15.3%	-21	-0.8%
<b>First Professional</b>	445	2.5%	504	2.9%	59	13.3%
<b>U.S. Minorities</b>	2,421	13.8%	2,501	14.3%	80	3.3%
<b>Oregon Residents</b>	14,339	82.0%	14,387	82.3%	48	0.3%
<b>Other U.S.</b>	2,286	13.1%	2,292	13.1%	6	0.3%
<b>International</b>	866	5.0%	812	4.6%	-54	-6.2%
<b>Undergrad &lt; 25</b>	12,404	70.9%	12,353	70.6%	-51	-0.4%
<b>Undergrad 25 and older</b>	1,941	11.1%	1,954	11.2%	13	0.7%
<b>Graduate &lt; 25</b>	532	3.0%	520	3.0%	-12	-2.3%
<b>Graduate 25 and older</b>	2,169	12.4%	2,160	12.3%	-9	-0.4%
<b>First Professional &lt; 25</b>	143	0.8%	165	0.9%	22	15.4%
<b>First Professional 25 and older</b>	302	1.7%	339	1.9%	37	12.3%

### Enrollment by Academic Unit\* and Student Level



### Index

	Page
Academic Unit.....	1 – 5, 7 – 10
Age.....	1
Cascade Campus	
Enrollment.....	11
Class Standing.....	5 – 6, 8, 10
Extended Campus.....	8 – 9
Full Time, Part Time.....	1,6
Gender.....	1, 5 – 7, 10
Highlights.....	12
Major.....	2 – 4
Residency.....	1, 6, 8
Student Level.....	1 – 7, 9
University Honors College.....	10
U.S. Minorities/ Ethnicity.....	1, 7, 9

\*Unduplicated headcount based upon student's primary major 1.

## Enrollment by Major

The Enrollment by Major includes duplicate headcount totals for Colleges and the University. Included in the totals are students who have indicated a dual major or double degree program; e.g., Primary Major 1, Primary Major 2, Secondary Major 1, and Secondary Major 2; e.g., a first professional student could also have a secondary undergraduate major.

ACADEMIC UNIT	UNDER-			ACADEMIC UNIT	UNDER-		
	GRAD	GRAD	TOTAL		GRAD	GRAD	TOTAL
<b><u>College of Agricultural Sciences</u></b>				<b><u>College of Education (Cont.)</u></b>			
Agricultural and Resource Economics	2	28	30	Teaching: Family and Consumer Sciences Ed	-	4	4
Agricultural Business Management	64	-	64	Teaching: Language Arts Education	-	6	6
Agricultural Education	-	11	11	Teaching: Music Education	-	7	7
Animal Science	-	18	18	<b>TOTAL</b>	<b>436</b>	<b>355</b>	<b>791</b>
Animal Sciences	332	-	332	<b><u>College of Engineering</u></b>			
Bioresource Research	35	1	36	Bioengineering	39	-	39
Crop Science	-	14	14	Pre-Bioengineering	57	-	57
Crop Science and Soil Science	27	-	27	Bioresource Engineering	-	9	9
Economics <sup>1</sup>	1	1	2	Chemical Engineering	85	39	124
Environmental Economics, Policy and Management	14	-	14	Pre-Chemical Engineering	102	-	102
Fisheries and Wildlife	190	-	190	Civil Engineering	153	64	217
Fisheries Science	-	49	49	Pre-Civil Engineering	178	-	178
Food Science and Technology	82	34	116	Computer Engineering	79	-	79
General Agriculture	90	-	90	Pre-Computer Engineering	83	-	83
Genetics	-	12	12	Computer Science	184	102	286
Horticulture	88	23	111	Pre-Computer Science	166	-	166
International Studies	2	-	2	Construction Engineering Management	117	4	121
Master of Agriculture	-	3	3	Pre-Construction Engineering Management	187	-	187
Natural Resources	71	-	71	Electrical and Computer Engineering	-	128	128
Poultry Science	-	1	1	Electrical and Electronics Engineering	165	-	165
Rangeland Resources	25	17	42	Pre-Electrical Engineering	166	-	166
Soil Science	-	15	15	Engineering Physics	4	-	4
Toxicology	-	25	25	Pre-Engineering Physics	12	-	12
Wildlife Science	-	42	42	Environmental Engineering	21	-	21
Non-Degree Agricultural Sciences	14	1	15	Pre-Environmental Engineering	12	-	12
<b>TOTAL</b>	<b>1,037</b>	<b>295</b>	<b>1,332</b>	Pre-General Engineering	53	-	53
<sup>1</sup> Joint program with CLA, FOR, and AG.				Industrial Engineering	42	30	72
<b><u>College of Business</u></b>				Pre-Industrial Engineering	66	-	66
Accounting	4	-	4	International Studies	6	-	6
Business Administration <sup>2</sup>	2,135	72	2,207	Manufacturing Engineering	15	-	15
International Studies	3	-	3	Pre-Manufacturing Engineering	14	-	14
Non-Degree Business	31	-	31	Materials Science	-	12	12
<b>TOTAL</b>	<b>2,173</b>	<b>72</b>	<b>2,245</b>	Mechanical Engineering	179	56	235
<sup>2</sup> Includes First Professional student(s).				Pre-Mechanical Engineering	279	-	279
<b><u>College of Education</u></b>				Nuclear Engineering	43	13	56
Adult Education	-	49	49	Pre-Nuclear Engineering	34	-	34
College Student Services Administration	-	45	45	Ocean Engineering	-	5	5
Counseling	-	58	58	Radiation Health Physics	10	22	32
Education	66	137	203	Pre-Radiation Health Physics	11	-	11
Pre-Education	370	2	372	Non-Degree Pre-Engineering	10	-	10
Teaching English to Speakers of Other Languages	-	8	8	<b>TOTAL</b>	<b>2,572</b>	<b>484</b>	<b>3,056</b>
Teaching: Agricultural Education	-	2	2				
Teaching: Elementary Education	-	37	37				

ACADEMIC UNIT	UNDER-GRAD	GRAD	TOTAL
<b><u>College of Forestry</u></b>			
Forest Engineering	65	28	93
Forest Engineering - Civil Engineering	6	-	6
Pre-Forest/Civil Engineering	16	-	16
Forest Management	77	-	77
Forest Recreation Resources	70	-	70
Forest Resources	-	36	36
Forest Science	-	56	56
International Studies	1	-	1
Natural Resources	118	-	118
Outdoor Recreation Leadership and Tourism Management	2	-	2
Wood Science	4	-	4
Wood Science and Technology	-	31	31
Wood Science and Technology	45	-	45
Non-Degree Forestry	16	1	17
Undecided Forestry	2	-	2
<b>TOTAL</b>	<b>422</b>	<b>152</b>	<b>574</b>

<b><u>Graduate School</u></b>			
Environmental Science	-	41	41
Interdisciplinary Studies	-	63	63
Molecular and Cellular Biology	-	32	32
Plant Physiology	-	4	4
Water Resources Engineering	-	8	8
Water Resources Policy and Management	-	4	4
Water Resources Science	-	6	6
Non-Degree Graduate Student	-	333	333
<b>TOTAL</b>	<b>-</b>	<b>491</b>	<b>491</b>

<b><u>College of Health and Human Sciences</u></b>			
Apparel Design	60	-	60
Pre-Apparel	48	-	48
Design and Human Environment	-	21	21
Environmental Health and Occupational Safety Management	-	4	4
Environmental Health and Safety	1	-	1
Exercise and Sport Science	718	58	776
Health Care Administration	46	3	49
Pre-Health Care Administration	76	-	76
Health Management and Policy	3	-	3
Pre-Health Management and Policy	3	-	3
Health Promotion and Education	147	-	147
Pre-Health Promotion and Education	1	-	1
Health Promotion and Health Behavior	6	-	6
Pre-Housing	30	-	30
Housing Studies	28	-	28
Human Development and Family Sciences	609	-	609
Human Development and Family Studies	-	31	31
Human Performance	-	1	1
Interior Design	69	-	69
Pre-Interiors	86	-	86

ACADEMIC UNIT	UNDER-GRAD	GRAD	TOTAL
<b><u>College of Health and Human Sciences (Cont.)</u></b>			
International Studies	6	-	6
Merchandising Management	274	-	274
Movement Studies in Disability	-	3	3
Nutrition and Food Management	236	17	253
Public Health	-	71	71
Non-Degree Health and Human Sciences	16	1	17
<b>TOTAL</b>	<b>2,463</b>	<b>210</b>	<b>2,673</b>

<b><u>College of Liberal Arts</u></b>			
American Studies	5	-	5
Anthropology	102	1	103
Applied Anthropology	-	36	36
Applied Ethics	-	4	4
Applied Visual Arts	252	1	253
Art	118	-	118
Creative Writing	-	12	12
Economics	51	20	71
English	212	20	232
Ethnic Studies	26	-	26
French	38	1	39
German	45	1	46
History	229	-	229
History of Science	-	7	7
International Studies	26	-	26
Liberal Studies	468	-	468
Music	108	-	108
Natural Resources	3	-	3
Philosophy	69	-	69
Political Science	216	-	216
Pre-Communication	183	-	183
Psychology	455	2	457
Public Policy	-	15	15
Sociology	167	-	167
Spanish	86	2	88
Speech Communication	80	-	80
Non-Degree Liberal Arts	50	1	51
Undecided-College of Liberal Arts	4	-	4
<b>TOTAL</b>	<b>2,993</b>	<b>123</b>	<b>3,116</b>

<b><u>College of Oceanic and Atmospheric Sciences</u></b>			
Atmospheric Sciences	-	9	9
Geophysics	-	1	1
Marine Resource Management	-	27	27
Oceanography	-	49	49
<b>TOTAL</b>	<b>-</b>	<b>86</b>	<b>86</b>

ACADEMIC UNIT	UNDER-GRAD	GRAD	FIRST PROF	TOTAL
<b><u>College of Pharmacy</u></b>				
Pharmacy	-	21	-	21
Pharmacy, Doctor of Pharmacy (4-year)	-	-	323	323
<b>TOTAL</b>	<b>-</b>	<b>21</b>	<b>323</b>	<b>344</b>
<b><u>College of Science</u></b>				
Applied Physics	-	2	-	2
Biochemistry and Biophysics	125	24	-	149
Biology	565	-	-	565
Botany	25	-	-	25
Botany and Plant Pathology	-	37	-	37
Chemistry	160	69	-	229
Computational Physics	8	-	-	8
Earth Science	14	-	-	14
Entomology	1	5	-	6
Environmental Science	181	-	-	181
General Science	843	3	-	846
Geographic Information Science	1	-	-	1
Geography	42	40	-	82
Geology	30	24	-	54
International Studies	14	-	-	14
Mathematical Sciences	15	-	-	15
Mathematics	138	59	-	197
Mathematics Education	-	18	-	18
Medical Technology	17	-	-	17
Microbiology	106	25	-	131
Natural Resources	23	-	-	23
Operations Research	-	1	-	1
Physics	67	32	-	99
Science Education	-	42	-	42
Statistics	-	31	-	31
Zoology	141	40	-	181
Non-Degree Science	58	9	-	67
Undecided Science Major	6	-	-	6
<b>TOTAL</b>	<b>2,580</b>	<b>461</b>	<b>-</b>	<b>3,041</b>
<b><u>College of Veterinary Medicine</u></b>				
Veterinary Medicine - DVM	-	-	181	181
Veterinary Science	-	4	-	4
<b>TOTAL</b>	<b>-</b>	<b>4</b>	<b>181</b>	<b>185</b>
<b><u>University Exploratory Studies</u></b>				
	<b>665</b>	<b>-</b>	<b>-</b>	<b>665</b>
<b><u>University Honors College<sup>3</sup></u></b>				
Honors Scholars and Honors Associates	450	-	-	450
International Studies	2	-	-	2
<b>TOTAL</b>	<b>452</b>	<b>-</b>	<b>-</b>	<b>452</b>
<b>TOTAL University</b>	<b>15,343</b>	<b>2,754</b>	<b>504</b>	<b>18,601</b>

### Degree Programs with the Highest Enrollment (Last Year's Rank)

#### Undergraduate

1. Business Administration (1)	2,135
2. General Science (2)	843
3. Exercise and Sport Science (4)	718
4. Human Development and Family Sciences (3)	609
5. Biology (5)	565
6. Liberal Studies (6)	468
7. Mechanical Engineering* (8)	458
8. Psychology (7)	455
9. Education* (24)	436
10. Computer Science* (9)	350

\*Includes Pre-Professional

#### Graduate

1. Education (2)	139
2. Electrical and Computer Engineering (1)	128
3. Computer Science (3)	102
4. Business Administration (7)	72
5. Public Health (6)	71
6. Chemistry (5)	69
7. Civil Engineering (8)	64
8. Interdisciplinary Studies (4)	63
9. Mathematics (14)	59
10. Counseling (11)	58
10. Exercise and Sport Science (9)	58

#### First Professional

1. Pharmacy, Doctor of Pharmacy (4-year)	323
2. Veterinary Medicine - DVM	181

<sup>3</sup>Honors Scholars and Honors Associates are not counted in the University total.

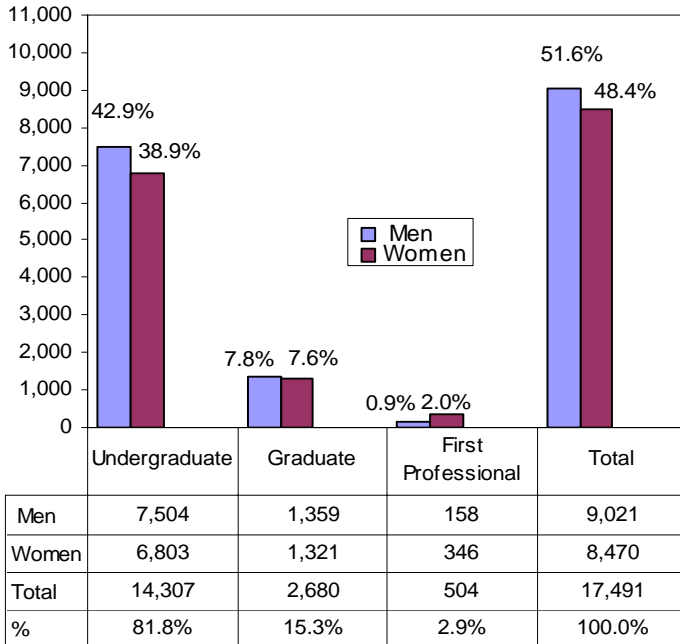
## Student Enrollment By Academic Unit and Student Class Standing

Academic Unit	Freshman	Sophomore	Junior	Senior	Post Bac	Non-Degree Undergrad	Undergrad Total	Master	Doctorate	Non-Degree Grad	Grad Total	First Professional	TOTAL
AG	118	179	228	417	46	14	1,002	141	148	1	290	–	1,292
BUS	377	439	483	754	39	32	2,124	62	–	0	62	–	2,186
ED	1	0	0	1	29	0	31	227	115	7	349	–	380
ENGR	425	488	483	1,080	28	10	2,514	261	203	0	464	–	2,978
FOR	42	75	94	180	10	16	417	77	67	1	145	–	562
HHS	350	501	591	874	27	17	2,360	111	95	4	210	–	2,570
LA	307	468	705	1,158	35	50	2,723	95	16	1	112	–	2,835
OC	–	–	–	–	–	–	0	44	41	0	85	–	85
PHARM	–	–	–	–	–	–	0	2	19	0	21	323	344
SCI	395	494	530	911	83	58	2,471	167	273	10	450	–	2,921
VM	–	–	–	–	–	–	0	4	0	0	4	181	185
UESP	334	240	68	21	–	2	665	–	–	–	0	–	665
GRAD	–	–	–	–	–	–	0	93	62	333	488	–	488
<b>Total 2006</b>	<b>2,349</b>	<b>2,884</b>	<b>3,182</b>	<b>5,396</b>	<b>297</b>	<b>199</b>	<b>14,307</b>	<b>1,284</b>	<b>1,039</b>	<b>357</b>	<b>2,680</b>	<b>504</b>	<b>17,491</b>
<b>Total 2005</b>	<b>2,349</b>	<b>2,881</b>	<b>3,258</b>	<b>5,362</b>	<b>286</b>	<b>209</b>	<b>14,345</b>	<b>1,377</b>	<b>978</b>	<b>346</b>	<b>2,701</b>	<b>445</b>	<b>17,491</b>

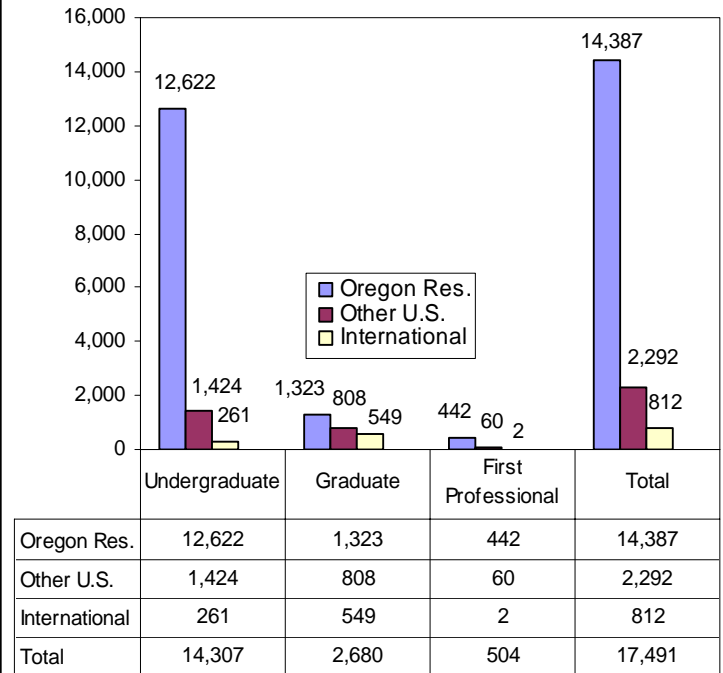
## By Academic Unit, Gender, and Student Level

Academic Unit	Undergraduate				Graduate				First Professional				Total	%
	Men	Women	Total	% of Univ.	Men	Women	Total	% of Univ.	Men	Women	Total	% of Univ.		
AG	443	559	1,002	5.7%	146	144	290	1.7%	–	–	–	–	1,292	7.4%
BUS	1,343	781	2,124	12.1%	34	28	62	0.4%	–	–	–	–	2,186	12.5%
ED	12	19	31	0.2%	96	253	349	2.0%	–	–	–	–	380	2.2%
ENGR	2,182	332	2,514	14.4%	381	83	464	2.7%	–	–	–	–	2,978	17.0%
FOR	285	132	417	2.4%	88	57	145	0.8%	–	–	–	–	562	3.2%
HHS	500	1,860	2,360	13.5%	56	154	210	1.2%	–	–	–	–	2,570	14.7%
LA	1,222	1,501	2,723	15.6%	37	75	112	0.6%	–	–	–	–	2,835	16.2%
OC	–	–	–	–	46	39	85	0.5%	–	–	–	–	85	0.5%
PHARM	–	–	–	–	6	15	21	0.1%	127	196	323	1.8%	344	2.0%
SCI	1,122	1,349	2,471	14.1%	263	187	450	2.6%	–	–	–	–	2,921	16.7%
VM	–	–	–	–	2	2	4	0.0%	31	150	181	1.0%	185	1.1%
UESP	395	270	665	3.8%	–	–	–	–	–	–	–	–	665	3.8%
GRAD	–	–	–	–	204	284	488	2.8%	–	–	–	–	488	2.8%
<b>Total 2006</b>	<b>7,504</b>	<b>6,803</b>	<b>14,307</b>	<b>81.8%</b>	<b>1,359</b>	<b>1,321</b>	<b>2,680</b>	<b>15.3%</b>	<b>158</b>	<b>346</b>	<b>504</b>	<b>2.9%</b>	<b>17,491</b>	<b>100.0%</b>
<b>Total 2005</b>	<b>7,512</b>	<b>6,833</b>	<b>14,345</b>	<b>82.0%</b>	<b>1,407</b>	<b>1,294</b>	<b>2,701</b>	<b>15.4%</b>	<b>149</b>	<b>296</b>	<b>445</b>	<b>2.5%</b>	<b>17,491</b>	<b>100.0%</b>

## Enrollment by Gender and Student Level



## By Residency\* and Student Level

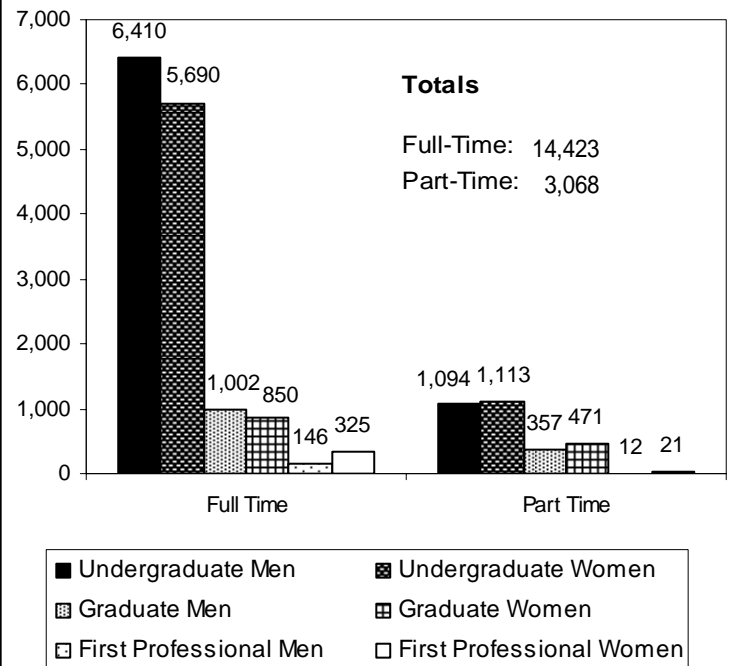


\* Residency is based upon tuition and fee status.

## Enrollment, Credit Hours, and FTE by Class Standing

Class Standing	Student Enrollment	Student Credit Hours	Student FTE
Freshman	2,349	33,411	2,227.4
Sophomore	2,884	40,175	2,678.3
Junior	3,182	43,488	2,899.2
Senior	5,396	72,033	4,802.2
Post Baccalaureate	297	2,764	184.3
Non-Degree Undergrad	199	1,437	95.8
<b>Total for Undergraduate</b>	<b>14,307</b>	<b>193,308</b>	<b>12,887.2</b>
Masters	1,284	13,892	1,157.7
Doctoral	1,039	12,200	1,355.6
Non-Degree Graduate	357	1,430	119.2
<b>Total for Graduate</b>	<b>2,680</b>	<b>27,522</b>	<b>2,632.4</b>
Doctor of Pharmacy	323	4,888	407.3
Veterinary Medicine	181	3,880	323.3
<b>Total for First Professional</b>	<b>504</b>	<b>8,768</b>	<b>730.7</b>
<b>GRAND TOTAL</b>	<b>17,491</b>	<b>229,598</b>	<b>16,250.3</b>

## Student Enrollment Full Time and Part Time, by Gender

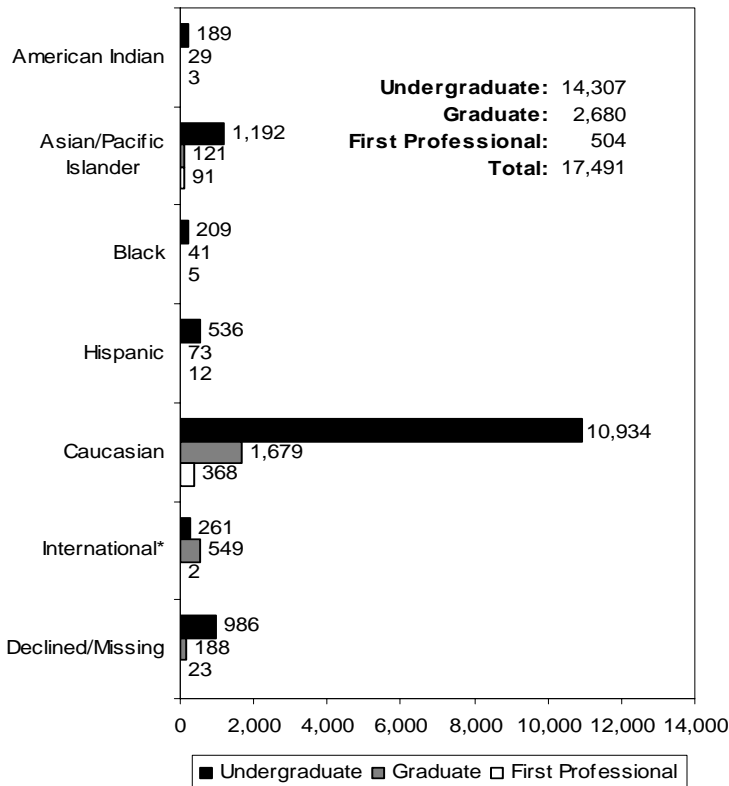


## Minority Enrollment

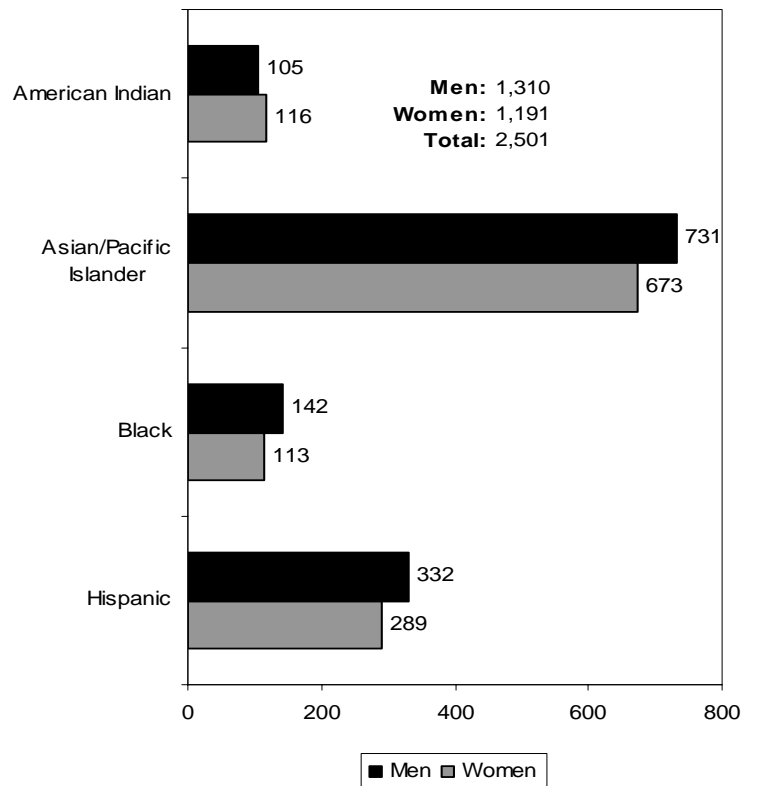
### U.S. Minorities by Academic Unit and Student Level

Academic Unit	American Indian				Asian/Pacific Islander				Black				Hispanic				TOTAL			
	Under-Grad	Grad	Prof.	Total	Under-Grad	Grad	Prof.	Total	Under-Grad	Grad	Prof.	Total	Under-Grad	Grad	Prof.	Total	Under-Grad	Grad	Prof.	Total
Ag. Sciences	20	5	-	25	19	7	-	26	4	1	-	5	28	5	-	33	71	18	-	89
Business	17	0	-	17	176	3	-	179	27	1	-	28	67	2	-	69	287	6	-	293
Education	0	6	-	6	0	15	-	15	0	18	-	18	0	23	-	23	0	62	-	62
Engineering	21	1	-	22	272	32	-	304	22	3	-	25	76	6	-	82	391	42	-	433
Forestry	11	0	-	11	10	1	-	11	1	1	-	2	13	3	-	16	35	5	-	40
Graduate School	-	8	-	8	-	23	-	23	-	5	-	5	-	9	-	9	-	45	-	45
Health and Human Sci.	28	3	-	31	149	16	-	165	43	5	-	48	98	7	-	105	318	31	-	349
Liberal Arts	47	3	-	50	133	2	-	135	66	4	-	70	134	3	-	137	380	12	-	392
Oceanic and Atmos. Sci.	-	1	-	1	-	0	-	0	-	1	-	1	-	1	-	1	-	3	-	3
Pharmacy	-	0	3	3	-	3	88	91	-	0	4	4	-	1	11	12	-	4	106	110
Science	42	2	-	44	385	19	-	404	31	2	-	33	74	13	-	87	532	36	-	568
Univ. Explor. Studies	3	-	-	3	48	-	-	48	15	0	-	15	46	-	-	46	112	-	-	112
Vet. Medicine	-	0	0	0	-	0	3	3	-	0	1	1	-	0	1	1	-	0	5	5
<b>Total</b>	<b>189</b>	<b>29</b>	<b>3</b>	<b>221</b>	<b>1,192</b>	<b>121</b>	<b>91</b>	<b>1,404</b>	<b>209</b>	<b>41</b>	<b>5</b>	<b>255</b>	<b>536</b>	<b>73</b>	<b>12</b>	<b>621</b>	<b>2,126</b>	<b>264</b>	<b>111</b>	<b>2,501</b>

### Ethnicity — All Students — by Level



### U.S. Minorities by Gender



\*International students are identified by residency code.

## OSU Extended Campus

### Enrollment, Credit Hours, and FTE

#### by Class Standing

Students Who Took Courses Through Ecampus\*

Class Standing	Student Enrollment	Student Credit Hours	Student FTE
Freshman	180	491	32.7
Sophomore	369	1,283	85.5
Junior	502	2,138	142.5
Senior	993	4,622	308.1
Post Baccalaureate	74	321	21.4
Non-Degree Undergrad	84	333	22.2
<b>Total for Undergraduate</b>	<b>2,202</b>	<b>9,188</b>	<b>612.5</b>
Masters	149	819	68.3
Doctoral	61	284	31.6
Non-Degree Graduate	171	496	41.3
<b>Total for Graduate</b>	<b>381</b>	<b>1,599</b>	<b>141.1</b>
Doctor of Pharmacy	4	13	1.1
Veterinary Medicine	0	0	0.0
<b>Total for First Professional</b>	<b>4</b>	<b>13</b>	<b>1.1</b>
<b>GRAND TOTAL (Spring 2006)</b>	<b>2,587</b>	<b>10,800</b>	<b>754.8</b>
(Spring 2005)	2,475	10,255	714.9

\*Table indicates students enrolled in courses offered through Ecampus, but also courses at OSU-Corvallis.

### Enrollment by Class Standing and Residency

Students Who Took Courses Only Through Ecampus\*\*

Class Standing	Oregon Resident	Other U.S.	International	Total
Freshman	12	7	0	19
Sophomore	29	17	0	46
Junior	95	42	0	137
Senior	239	87	4	330
Post Baccalaureate	11	31	2	44
Non-Degree Undergrad	22	42	2	66
<b>Total for Undergraduate</b>	<b>408</b>	<b>226</b>	<b>8</b>	<b>642</b>
Masters	98	19	1	118
Doctoral	21	24	1	46
Non-Degree Graduate	95	54	0	149
<b>Total for Graduate</b>	<b>214</b>	<b>97</b>	<b>2</b>	<b>313</b>
Doctor of Pharmacy	0	0	0	0
Veterinary Medicine	0	0	0	0
<b>Total for First Professional</b>	<b>0</b>	<b>0</b>	<b>0</b>	<b>0</b>
<b>GRAND TOTAL (Spring 2006)</b>	<b>622</b>	<b>323</b>	<b>10</b>	<b>955</b>
(Spring 2005)	553	279	9	841

\*\*Table indicates students enrolled in only Ecampus-offered courses; i.e., students are not enrolled in any OSU-Corvallis on-campus courses.

## Student Credit Hours by Academic Unit\* and Class Standing

Academic Unit	Freshman	Sophomore	Junior	Senior	Post Bac	Non-Degree Undergrad	Undergrad Total	Master	Doctorate	Non-Degree Grad	Grad Total	First Professional	TOTAL
AG	34	113	205	795	158	83	1,388	3	0	121	124	0	1,512
BUS	0	12	52	139	11	0	214	7	3	9	19	0	233
ED	0	6	39	52	6	0	103	692	254	106	1,052	0	1,155
ENGR	0	0	4	8	0	4	16	29	11	0	40	0	56
FOR	0	15	45	102	12	18	192	0	0	6	6	0	198
HHS	59	78	170	245	6	14	572	12	0	40	52	9	633
LA	231	769	1,141	2,150	48	71	4,410	61	10	42	113	4	4,527
OC	3	32	73	55	7	11	181	0	0	7	7	0	188
SCI	152	240	391	1,041	71	126	2,021	15	6	163	184	0	2,205
ALS**	12	18	18	20	2	0	70	0	0	2	2	0	72
IP***	0	0	0	15	0	6	21	0	0	0	0	0	21
<b>Total SCH</b>	<b>491</b>	<b>1,283</b>	<b>2,138</b>	<b>4,622</b>	<b>321</b>	<b>333</b>	<b>9,188</b>	<b>819</b>	<b>284</b>	<b>496</b>	<b>1,599</b>	<b>13</b>	<b>10,800</b>
<b>Total FTE</b>	<b>32.7</b>	<b>85.5</b>	<b>142.5</b>	<b>308.1</b>	<b>21.4</b>	<b>22.2</b>	<b>612.5</b>	<b>68.3</b>	<b>31.6</b>	<b>41.3</b>	<b>141.1</b>	<b>1.1</b>	<b>754.8</b>

\*Academic Units are those that offered the courses. \*\*Academic Learning Services. \*\*\*Interdisciplinary Programs.



## OSU Extended Campus

### Student Enrollment by Academic Unit and Ethnicity

All Students Who Took Courses Through ECampus

Acad. Unit	American Indian /Alaskan Native		Asian /Pacific Islander		Black		Hispanic		White		International		Declined to Respond / Missing		TOTAL								
	Under-grad	Grad Total	Under-grad	Grad Total	Under-grad	Grad Total	Under-grad	Grad Total	Under-grad	Grad Total	Under-grad	Grad Total	Under-grad	Grad Total	Under-grad	Grad Total							
AG	6	0	6	0	1	0	1	0	7	0	182	0	182	3	0	3	21	1	22	226	1	227	
BUS	3	0	16	0	7	0	7	0	8	0	205	0	205	9	1	10	14	0	14	262	1	263	
ED	0	3	0	7	0	5	5	0	5	8	131	139	8	0	3	3	2	22	24	10	176	186	
ENGR	1	0	21	0	1	0	1	4	2	160	6	166	4	1	5	5	14	2	16	205	11	216	
FOR	2	0	2	0	0	0	0	5	0	71	3	74	0	1	1	1	17	1	18	97	5	102	
HHS	3	0	18	1	4	1	5	7	0	222	9	231	2	0	2	2	14	2	16	270	13	283	
LA	14	0	26	0	15	0	15	26	0	456	0	456	6	0	6	6	76	0	76	619	0	619	
PHARM*	-	0	-	2	-	0	0	-	0	-	1	1	-	0	0	0	-	1	1	-	-	4	4
SCI	13	1	49	0	7	0	7	11	0	302	5	307	9	0	9	9	45	1	46	436	7	443	
GRAD	-	1	-	3	-	0	0	-	3	-	111	111	-	2	2	2	-	47	47	-	167	167	
UESP	0	-	6	-	4	-	4	5	-	57	-	57	0	-	0	0	5	-	5	77	-	77	
<b>Total</b>	<b>42</b>	<b>5</b>	<b>144</b>	<b>13</b>	<b>39</b>	<b>6</b>	<b>45</b>	<b>73</b>	<b>10</b>	<b>1,663</b>	<b>266</b>	<b>1,929</b>	<b>33</b>	<b>8</b>	<b>41</b>	<b>208</b>	<b>77</b>	<b>285</b>	<b>2,202</b>	<b>385</b>	<b>2,587</b>		

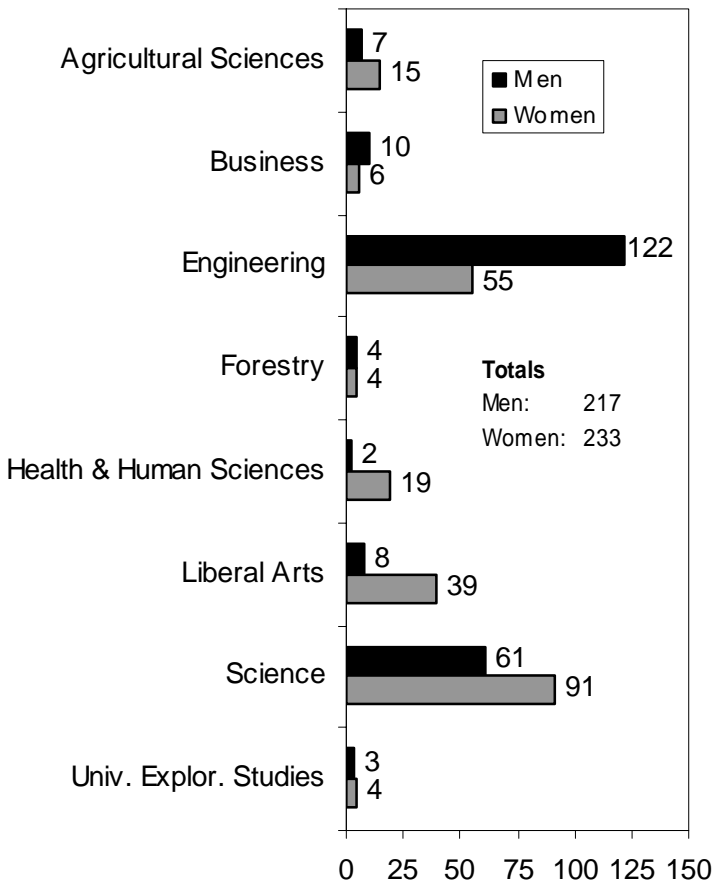
\*First Professional students are included in the graduate totals.

## University Honors College Students By Academic Unit and Student Class Standing

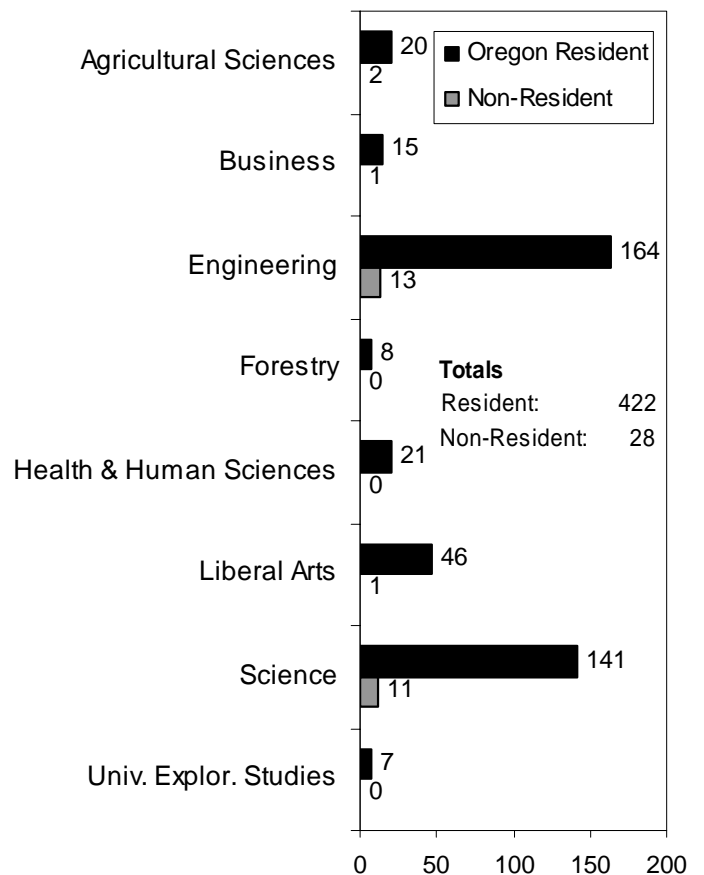
Academic Unit	Freshman	Sophomore	Junior	Senior	Total	% of Undergrad Enrollment for College
Agricultural Sciences	3	3	5	11	22	2.2
Business	1	0	4	11	16	0.8
Engineering	14	39	39	85	177	7.0
Forestry	1	1	4	2	8	1.9
Health and Human Sciences	2	8	9	2	21	0.9
Liberal Arts	3	10	9	25	47	1.7
Science	6	35	36	75	152	6.2
University Exploratory Studies	1	6	0	0	7	1.1
<b>TOTAL*</b>	<b>31</b>	<b>102</b>	<b>106</b>	<b>211</b>	<b>450</b>	<b>3.1</b>

\*The total may include students who are participating in MECOP, Study Abroad, or other experiential learning programs.

### By Academic Unit and Gender



### By Academic Unit and Residency



## Cascades Campus Enrollment

Spring Term 2006				
Tier	Enrollment Type	Institution Provide	Headcount	Term FTE
1 & 2*	OSU-Cascades	OSU, EOU, UO	457	259.0
<b>Total OSU-Cascades Enrollment</b>			<b>457</b>	<b>259.0</b>
3*	OSU Admitted Non-Enrolled	COCC Students	140	85.5
<b>Total Students Receiving Services</b>			<b>597</b>	<b>344.5</b>

\*Source: OSU Office of Institutional Research.

\*\*Source: OSU-Cascades.

### Oregon State University – Cascades Campus, Tier 1 and Tier 2

Gender	Headcount	Percent
Female	314	68.7%
Male	143	31.3%
Full-Time, Part-Time	Headcount	Percent
Full-Time	137	30.0%
Part-Time	320	70.0%
Level	Headcount	Percent
Undergraduate	388	84.9%
Graduate	69	15.1%
Residency	Headcount	Percent
Oregon Residents	426	93.2%
Other U.S. Residents	27	5.9%
International	4	0.9%
Level and Age Group	Headcount	Percent
Undergraduate < 25	172	37.6%
Undergraduate 25 and older	216	47.3%
Graduate <25	9	2.0%
Graduate 25 and older	60	13.1%
Ethnicity	Headcount	Percent
Black	0	0.0%
American Indian/Alaskan Native	9	2.0%
Asian / Pacific Islander	8	1.8%
Hispanic	18	3.9%
<b>Total for U.S. Minorities</b>	<b>35</b>	<b>7.7%</b>
White	356	77.9%
Declined to Respond / Missing	62	13.6%
International	4	0.9%
<b>GRAND TOTAL</b>	<b>457</b>	<b>100.0%</b>

Student Level	Headcount	Credit Hours	FTE
Freshman	6	63	4.2
Sophomore	11	50	3.3
Junior	74	528	35.2
Senior	132	1,199	79.9
Postbac Degree Seeking	21	166	11.1
Non-Degree Undergraduate	51	366	24.4
Cascades Partner Undergraduate	93	846	56.4
<b>Subtotal for Undergraduate</b>	<b>388</b>	<b>3,218</b>	<b>214.5</b>
Masters	39	238	19.8
Non-Degree Graduate	1	2	0.2
Cascades Partner Masters	29	294	24.5
<b>Subtotal for Graduate</b>	<b>69</b>	<b>534</b>	<b>44.5</b>
<b>TOTAL</b>	<b>457</b>	<b>3,752</b>	<b>259.0</b>

## Highlights

■ When Spring 2005 and Spring 2006 are compared, the total enrollment 0 students, or 0.0% (from 17,491 to 17,491). At the same time, the total student FTE decreased by 212.8, or -1.3% (from 16,463.0 to 16,250.3), and the student credit hours decreased by 3,545, or -1.5% (from 233,143 to 229,598).

■ When compared to Spring 2005, the undergraduate enrollment decreased by 38 students, or -0.3% (from 14,345 to 14,307); the graduate enrollment decreased by 0.8% (from 2,701 to 2,680); the first professional enrollment increased by 13.3% (from 445 to 504).

■ When compared to Spring 2005, Oregon residents increased by 0.3%; students from other U.S. states increased by 0.3%; and international student enrollment decreased by 6.2%.

■ For Spring 2006, the percentage of U.S. minority students was 14.3% of the total enrollment. The number of minority students increased by 3.3% when compared to Spring 2005 (from 2,421 to 2,501).

■ The College of Engineering, College of Science, and College of Liberal Arts had the largest student enrollments (2,978, 2,921, and 2,835 respectively) when compared to the other academic units.

■ OSU Extended Campus had 2,587 students, an increase of 4.5% over Spring 2005. These students took 10,800 credits, of which 41.9% were from the College of Liberal Arts, while 20.4% were from the College of Science.

■ During Spring 2006, a total of 597 students received services from OSU Cascades Campus.

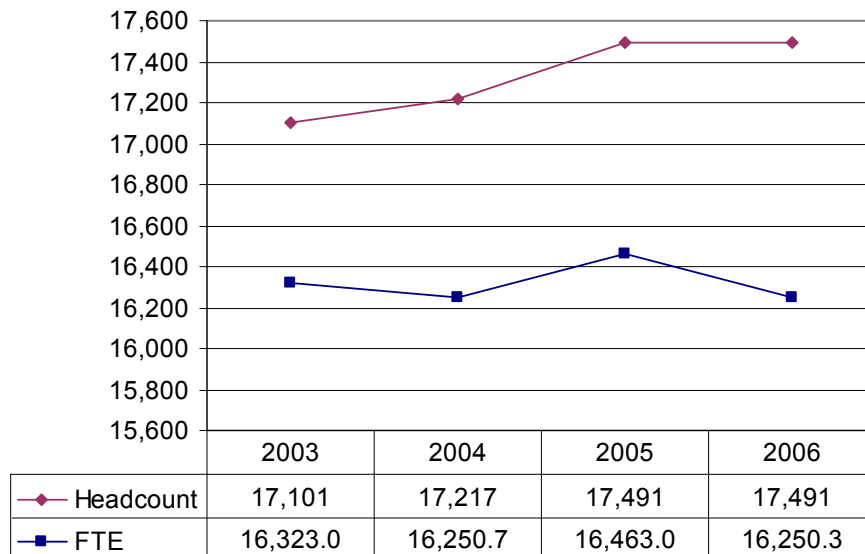
■ Other increases that occurred when comparing Spring 2005 and Spring 2006 are as follows:

- First Professional students under age 25: 15.4%
- First Professional students 25 and older: 12.3%
- Part-time students: 11.0%
- Undergraduate students age 25 and older: 0.7%
- Female students: 0.6%

■ Other decreases that occurred when comparing Spring 2005 and Spring 2006 are as follows:

- Graduate students under age 25: -2.3%
- Full-time students: -2.1%
- Male students: -0.5%
- Graduate students age 25 and older: -0.4%
- Undergraduate students under age 25: -0.4%

## Spring Enrollment Trend 2003-2006



Source: Spring Term 2006, 4th Week Student Data Extract File

Comments about this publication are welcome.

Please contact the staff in the Office of Institutional Research, Kerr Administration Building (541-737-9600).