



# Enrollment Summary — Fall Term 2017

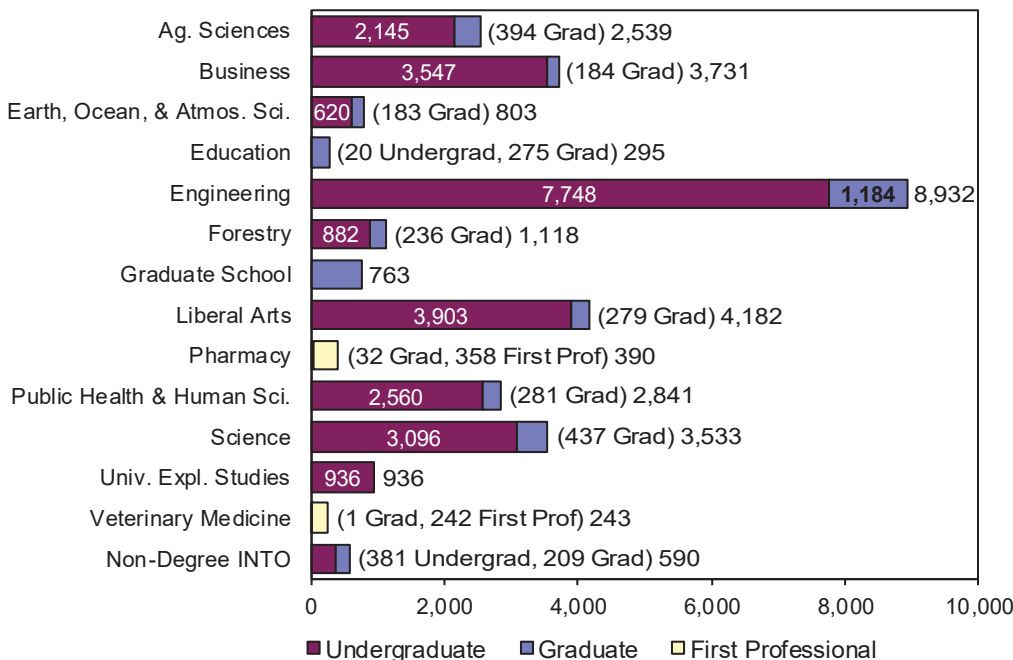
Office of Institutional Research • <http://institutionalresearch.oregonstate.edu/>

## Enrollment at-a-Glance

	2016	2017	Change	% Change	*Students enrolled after the first day that withdrew by the fourth week are in the headcount but not in credit hours or FTE.
Total Enrollment (Headcount)	30,354	<b>30,896</b>	542	1.8%	
Total Student FTE *	25,833.8	<b>26,127.4</b>	293.6	1.1%	
Total Student Credit Hours*	365,917	<b>370,379</b>	4,462	1.2%	

	2016		2017		Change	
	Headcount	Percent	Headcount	Percent	Headcount	Percent
Women	14,172	46.7%	<b>14,420</b>	<b>46.7%</b>	248	1.7%
Men	16,182	53.3%	<b>16,476</b>	<b>53.3%</b>	294	1.8%
Full-Time	22,443	73.9%	<b>22,402</b>	<b>72.5%</b>	-41	-0.2%
Part-Time	7,911	26.1%	<b>8,494</b>	<b>27.5%</b>	583	7.4%
Undergraduate	25,327	83.4%	<b>25,838</b>	<b>83.6%</b>	511	2.0%
Graduate	4,466	14.7%	<b>4,458</b>	<b>14.4%</b>	-8	-0.2%
First Professional	561	1.8%	<b>600</b>	<b>1.9%</b>	39	7.0%
U.S. Minorities	7,204	23.7%	<b>7,660</b>	<b>24.8%</b>	456	6.3%
Oregon Residents Total	17,964	59.2%	<b>17,823</b>	<b>57.7%</b>	-141	-0.8%
Undergraduate	16,272	53.6%	<b>16,163</b>	<b>52.3%</b>	-109	-0.7%
Graduate	1,271	4.2%	<b>1,226</b>	<b>4.0%</b>	-45	-3.5%
First Professional	421	1.4%	<b>434</b>	<b>1.4%</b>	13	3.1%
Non-Residents Total	12,390	40.8%	<b>13,073</b>	<b>42.3%</b>	683	5.5%
Undergraduate	9,055	29.8%	<b>9,675</b>	<b>31.3%</b>	620	6.8%
Graduate	3,195	10.5%	<b>3,232</b>	<b>10.5%</b>	37	1.2%
First Professional	140	0.5%	<b>166</b>	<b>0.5%</b>	26	18.6%
International	3,529	11.6%	<b>3,556</b>	<b>11.5%</b>	27	0.8%
Veteran Total	956	3.1%	<b>1,048</b>	<b>3.4%</b>	92	9.6%
Undergraduate	870		<b>944</b>		74	8.5%
% of Undergraduate	3.4%		<b>3.7%</b>			
Graduate/First Professional	86		<b>104</b>		18	20.9%
% of Graduate/First Professional	1.7%		<b>2.1%</b>			
First Generation College (Undergraduate)	5,858		<b>5,939</b>		81	1.4%
% of Undergraduate	23.1%		<b>23.0%</b>			

## Enrollment by Academic Unit\* and Student Level



## Index

	Page
Academic Unit .....	1-2, 4-8, 10-11, 14-16
Admissions .....	2
Age.....	1, 8, 19
Cascades Campus .....	17-18
Class Standing .....	4, 8, 14-15, 18
Extended Campus .....	15-16
First Generation College.....	1, 17
Freshman GPA, SAT, ACT.....	2
Full Time, Part Time .....	1, 9, 17
Geographic Origin .....	12, 19
Highlights.....	20
History of Enrollment .....	20
Honors College.....	14
International.....	1, 10-13
INTO-OSU.....	19
Major .....	5-7, 19
New Students .....	2-3, 8
Residency.....	1, 8-9, 14-15, 17
Sex—Binary .....	1-2, 4, 11, 14, 17, 19
Student Level .....	1-10, 13, 15-18
U.S Minorities/ Ethnicity.....	1, 10-11, 16-17
Veteran.....	1, 17

\*Unduplicated headcount based upon student's primary college.

## Applications and Admissions Summary

	Applications	Admitted	Admit Rate	Enrolled*	Yield (Enrolled to Admitted)
First-Time Freshmen	15,081	11,998	79.6%	3,778	31.5%
Undergraduate Transfers	4,195	2,527	60.2%	1,393	55.1%
Post-Baccalaureate	1,315	834	63.4%	519	62.2%
Non-Degree Undergraduates	782	702	89.8%	533	75.9%
Graduate	6,016	1,606	26.7%	770	47.9%
Non-Degree Graduates	769	724	94.1%	494	68.2%
First Professional**		178		156	87.6%
<b>Total</b>	<b>28,158</b>	<b>18,569</b>		<b>7,643</b>	<b>41.2%</b>

\*Fall Term 2017, 4th week Banner Student Data Extract File.

Source: Data Warehouse extract on Oct. 16, 2017.

\*\*No complete application data for First Professional students in Banner.

## Freshman Entrance GPA, SAT, and ACT Scores

### Mean High School GPA

Sex—Binary	2012	2013	2014	2015	2016	2017*
Male	3.53	3.53	3.55	3.54	<b>3.58</b>	
Female	3.6	3.61	3.63	3.63	<b>3.69</b>	
Both	3.56	3.57	3.59	3.58	<b>3.63</b>	

\*Fall 2017 numbers are not available at this time.

### Mean SAT Verbal Score\*

Sex—Binary	2012	2013	2014	2015	2016	2017
Male						<b>598</b>
Female						<b>585</b>
Both						<b>592</b>

### Mean SAT Math Score\*

Sex—Binary	2012	2013	2014	2015	2016	2017
Male						<b>611</b>
Female						<b>568</b>
Both						<b>590</b>

\*Due to recent changes in how SAT scores are calculated, scores reported for new incoming freshmen are not directly comparable to historical scores. In order to avoid confusion, historical scores are not shown.

### Mean SAT Composite Score\*

Sex—Binary	2012	2013	2014	2015	2016	2017
Male						<b>1209</b>
Female						<b>1154</b>
Both						<b>1182</b>

### Mean ACT English Score

Sex—Binary	2012	2013	2014	2015	2016	2017
Male	23.4	23.4	23.7	23.8	<b>24.3</b>	<b>24.2</b>
Female	23.7	23.7	24	23.9	<b>24.4</b>	<b>24.5</b>
Both	23.5	23.6	23.8	23.9	<b>24.3</b>	<b>24.4</b>

### Mean ACT Math Score

Sex—Binary	2012	2013	2014	2015	2016	2017
Male	25.5	25.4	25.6	25.6	<b>25.9</b>	<b>25.6</b>
Female	23.5	23.4	23.8	23.2	<b>23.3</b>	<b>23.4</b>
Both	24.5	24.4	24.7	24.4	<b>24.6</b>	<b>24.6</b>

### Mean ACT Composite Score

Sex—Binary	2012	2013	2014	2015	2016	2017
Male	24.7	24.6	24.8	25.1	<b>25.4</b>	<b>25.4</b>
Female	23.9	23.9	24.2	24	<b>24.2</b>	<b>24.4</b>
Both	24.3	24.2	24.5	24.6	<b>24.8</b>	<b>24.9</b>

## New Students by Academic Unit

	New Students	Percent for Unit
Agricultural Sciences	566	22.3
Business	803	21.5
Earth, Ocean, and Atmospheric Sciences	230	28.6
Education	30	10.2
Engineering	2,102	23.5
Forestry	177	15.8
Graduate School	364	47.7
Liberal Arts	827	19.8
Pharmacy	92	23.6
Public Health and Human Sciences	489	17.2
Science	1,124	31.8
University Exploratory Studies	496	53.0
Veterinary Medicine	70	28.8
Non-Degree INTO	273	46.3
<b>Total</b>	<b>7,643</b>	<b>24.7</b>

## New Students— Where They Came From

New Undergraduate Students from High School				
	2016	2017	Change	
			Headcount	Percent
Oregon High Schools	2,736	2,624	-112	-4.1%
U.S. High Schools	1,040	1,080	40	3.8%
International High Schools	44	32	-12	-27.3%
Unknown	36	42	6	16.7%
<b>Total</b>	<b>3,856</b>	<b>3,778</b>	<b>-78</b>	<b>-2.0%</b>
New Undergraduate Transfer Students				
Oregon Community Colleges	698	686	-12	-1.7%
OUS Institutions	90	80	-10	-11.1%
Oregon Private Institutions	17	20	3	17.6%
Out-of-State Institutions	546	544	-2	-0.4%
Foreign Country Institutions	10	37	27	270.0%
Unknown	25	26	1	4.0%
<b>Total</b>	<b>1,386</b>	<b>1,393</b>	<b>7</b>	<b>0.5%</b>
New Graduate and First Professional				
Masters	507	523	16	3.2%
Doctoral	272	247	-25	-9.2%
PharmD (Doctor of Pharmacy)	80	86	6	7.5%
Vet Med (Doctor of Veterinary Medicine)	55	70	15	27.3%
<b>Total</b>	<b>860</b>	<b>926</b>	<b>66</b>	<b>7.7%</b>
New Non-Degree and Post Baccalaureate Students				
Non-Degree Undergraduate	593	533	-60	-10.1%
Post-Baccalaureate	466	519	53	11.4%
Non-Degree Graduate	559	494	-65	-11.6%
<b>Total</b>	<b>1,618</b>	<b>1,546</b>	<b>-72</b>	<b>-4.4%</b>
<b>Total New Students</b>	<b>7,774</b>	<b>7,643</b>	<b>-131</b>	<b>-1.7%</b>
Re-Admit Students	326	300	-26	-8.0%
Continuing Students	22,254	22,953	699	3.1%
<b>Grand Total</b>	<b>30,354</b>	<b>30,896</b>	<b>542</b>	<b>1.8%</b>

New Undergraduate Students from High School Top Ten Oregon High Schools by Enrollment (Last Year's Rank)			
1. Westview High School (3)	73	6. West Linn High School (5)	57
2. Southridge High School (2)	68	7. Sunset High School (1)	53
3. Tigard Senior High School (6)	62	8. Lake Oswego High School (13)	48
4. Clackamas High School (7)	58	9. Beaverton High School (7)	46
4. Sherwood High School (11)	58	10. Tualatin High School (4)	43
Top Ten States by Enrollment (Last Year's Rank)			
1. California (1)	520	6. Texas (4)	18
2. Washington (2)	214	6. Idaho (5)	18
3. Hawaii (3)	93	8. Nevada (9)	15
4. Colorado (5)	22	9. Illinois (20)	14
4. Alaska (8)	22	10. Arizona (7)	11

New Undergraduate Transfers from Oregon Community Colleges		
	2016	2017
Blue Mountain Com College	17	16
Central Oregon Com College	36	48
Chemeketa Community College	151	144
Clackamas Community College	58	65
Clatsop Community College	10	14
Columbia Gorge CC	7	10
Klamath Community College	2	8
Lane Community College	57	55
Linn-Benton Community College	117	129
Mt Hood Community College	28	26
Portland Com College-Main	124	86
Rogue Community College	17	15
Southwestern Ore Comm College	22	26
Tillamook Bay Comm College	1	7
Treasure Valley Com College	9	6
Umpqua Community College	42	31
<b>Total</b>	<b>698</b>	<b>686</b>

New Undergraduate Transfers from OUS Institutions		
	2016	2017
Eastern Oregon University	9	11
Oregon Inst of Technology	6	5
Portland State University	26	29
Southern Oregon University	12	5
University of Oregon	21	13
Western Oregon University	16	17
<b>Total</b>	<b>90</b>	<b>80</b>

New Undergraduate Transfers from Oregon Private Institutions		
	2016	2017
Concordia University	5	4
Corban University	2	4
George Fox University	1	4
Lewis & Clark College	1	0
Linfield College	3	2
Northwest Christian University	1	3
Pacific NW College of Art	0	0
Pacific University	3	0
Reed College	0	0
University of Portland	1	2
Warner Pacific College	0	0
Willamette University	0	1
<b>Total</b>	<b>17</b>	<b>20</b>

New Students From Oregon Counties				
	2016	2017	2016	2017
Baker	16	9	Lake	8
Benton	297	274	Lane	354
Clackamas	575	564	Lincoln	47
Clatsop	34	28	Linn	160
Columbia	35	36	Malheur	18
Coos	43	42	Marion	357
Crook	17	13	Morrow	8
Curry	9	8	Multnomah	527
Deschutes	165	162	Polk	116
Douglas	97	67	Sherman	7
Gilliam	0	4	Tillamook	22
Grant	4	5	Umatilla	48
Hamey	6	8	Union	18
Hood River	26	35	Wallowa	8
Jackson	131	149	Wasco	16
Jefferson	14	16	Washington	845
Josephine	48	46	Wheeler	1
Klamath	22	38	Yamhill	131
				<b>94</b>

## Student Enrollment By Academic Unit and Student Class Standing

Academic Unit	Freshman	Sophomore	Junior	Senior	Post Bac	Non-Degree Undergrad	Undergrad Total	Master	Doctorate	Non-Degree Grad	Grad Total	First Professional	TOTAL
Ag. Sciences	306	331	528	785	172	23	2,145	158	181	55	394	-	2,539
Business	734	791	881	1,081	23	37	3,547	165	11	8	184	-	3,731
Earth, Ocean, and Atmos Sci	97	113	153	215	40	2	620	62	75	46	183	-	803
Education	-	-	-	-	20	-	20	124	151	-	275	-	295
Engineering	1,236	1,311	1,333	2,181	1,647	40	7,748	637	544	3	1,184	-	8,932
Forestry	74	117	223	406	51	11	882	128	62	46	236	-	1,118
Liberal Arts	481	700	1,060	1,429	139	94	3,903	211	68	-	279	-	4,182
Pharmacy	-	-	-	-	-	-	-	-	32	-	32	358	390
Public Health and Human Sci	354	500	711	950	43	2	2,560	161	104	16	281	-	2,841
Science	695	668	673	899	33	128	3,096	107	324	6	437	-	3,533
Veterinary Medicine	-	-	-	-	-	-	-	1	-	-	1	242	243
Graduate School	-	-	-	-	-	-	-	128	82	553	763	-	763
Univ. Explor. Studies	462	202	56	17	-	199	936	-	-	-	-	-	936
Non-Degree INTO	-	-	-	-	-	381	381	-	-	209	209	-	590
<b>Total 2017</b>	<b>4,439</b>	<b>4,733</b>	<b>5,618</b>	<b>7,963</b>	<b>2,168</b>	<b>917</b>	<b>25,838</b>	<b>1,882</b>	<b>1,634</b>	<b>942</b>	<b>4,458</b>	<b>600</b>	<b>30,896</b>
<b>Total 2016</b>	<b>4,644</b>	<b>4,542</b>	<b>5,783</b>	<b>7,531</b>	<b>1,850</b>	<b>977</b>	<b>25,327</b>	<b>1,911</b>	<b>1,636</b>	<b>919</b>	<b>4,466</b>	<b>561</b>	<b>30,354</b>

## By Academic Unit, Sex—Binary\*, and Student Level

Academic Unit	Undergraduate				Graduate				First Professional				Total	%
	Men	Women	Total	% of Univ.	Men	Women	Total	% of Univ.	Men	Women	Total	% of Univ.		
Ag. Sciences	844	1,301	2,145	6.9%	173	221	394	1.3%	-	-	-	-	2,539	8.2%
Business	1,961	1,586	3,547	11.5%	99	85	184	0.6%	-	-	-	-	3,731	12.1%
Earth, Ocean, and Atmos Sci	256	364	620	2.0%	79	104	183	0.6%	-	-	-	-	803	2.6%
Education	8	12	20	0.1%	80	195	275	0.9%	-	-	-	-	295	1.0%
Engineering	6,196	1,552	7,748	25.1%	899	285	1,184	3.8%	-	-	-	-	8,932	28.9%
Forestry	520	362	882	2.9%	112	124	236	0.8%	-	-	-	-	1,118	3.6%
Liberal Arts	1,571	2,332	3,903	12.6%	80	199	279	0.9%	-	-	-	-	4,182	13.5%
Pharmacy	-	-	-	0.0%	21	11	32	0.1%	145	213	358	1.2%	390	1.3%
Public Health and Human Sci	615	1,945	2,560	8.3%	75	206	281	0.9%	-	-	-	-	2,841	9.2%
Science	1,265	1,831	3,096	10.0%	257	180	437	1.4%	-	-	-	-	3,533	11.4%
Veterinary Medicine	-	-	-	0.0%	-	1	1	0.0%	41	201	242	0.8%	243	0.8%
Graduate School	-	-	-	0.0%	296	467	763	2.5%	-	-	-	-	763	2.5%
Univ. Explor. Studies	445	491	936	3.0%	-	-	-	0.0%	-	-	-	-	936	3.0%
Non-Degree INTO	277	104	381	1.2%	161	48	209	0.7%	-	-	-	-	590	1.9%
<b>Total 2017</b>	<b>13,958</b>	<b>11,880</b>	<b>25,838</b>	<b>83.6%</b>	<b>2,332</b>	<b>2,126</b>	<b>4,458</b>	<b>14.4%</b>	<b>186</b>	<b>414</b>	<b>600</b>	<b>1.9%</b>	<b>30,896</b>	<b>100.0%</b>
<b>Total 2016</b>	<b>13,622</b>	<b>11,705</b>	<b>25,327</b>	<b>83.4%</b>	<b>2,376</b>	<b>2,090</b>	<b>4,466</b>	<b>14.7%</b>	<b>184</b>	<b>377</b>	<b>561</b>	<b>1.8%</b>	<b>30,354</b>	<b>100.0%</b>

\*These numbers are based on self-reported sex with two options to meet federal reporting requirements. OSU is working on data processes to collect and allow the reporting of gender identity categories, but these are not yet available in the student data system

## Enrollment by Major

This section counts each major for students with multiple or double degree majors; headcounts are duplicated across college and university totals.

ACADEMIC UNIT	UNDER-GRAD	GRAD	TOTAL	ACADEMIC UNIT	UNDER-GRAD	GRAD	TOTAL
<b><u>College of Agricultural Sciences</u></b>				<b><u>College of Business (Cont.)</u></b>			
Agricultural Business Management	121	-	121	Pre-Business Information Systems	37	-	37
Agricultural Education	-	8	8	Design and Human Environment	-	2	2
Agricultural Sciences	319	-	319	Design and Innovation Management	8	-	8
Animal Science	-	21	21	Pre-Design and Innovation Management	58	-	58
Animal Sciences	398	-	398	Finance	356	-	356
Applied Economics	-	32	32	Pre-Finance	97	-	97
Bioresource Research	61	-	61	Hospitality Management	2	-	2
Botany	46	-	46	Innovation Management	29	-	29
Botany and Plant Pathology	-	37	37	Interior Design	43	-	43
Crop and Soil Science	51	-	51	Pre-Interiors	43	-	43
Crop Science	-	22	22	International Studies	1	-	1
Environmental Economics and Policy	56	-	56	Management	234	-	234
Fisheries and Wildlife Administration	-	4	4	Pre-Management	47	-	47
Fisheries and Wildlife Sciences	668	-	668	Marketing	226	-	226
Fisheries Management	-	26	26	Pre-Marketing	161	-	161
Fisheries Science	-	38	38	Merchandising Management	157	-	157
Food Science and Technology	160	33	193	Pre-Merchandising Management	97	-	97
Horticulture	238	38	276	Sustainability	22	-	22
International Studies	1	-	1	Non-Degree Business	36	-	36
Rangeland Ecology and Management	-	12	12	<b>TOTAL</b>	<b>4,084</b>	<b>243</b>	<b>4,327</b>
Rangeland Sciences	38	-	38	<b><u>College of Earth, Ocean, and Atmospheric Sciences</u></b>			
Soil Science	-	30	30	Earth Sciences	164	-	164
Sustainability	30	-	30	Environmental Sciences	434	-	434
Toxicology	-	18	18	Geographic Information Science	83	56	139
Wildlife Management	-	46	46	Geography and Geospatial Science	22	-	22
Wildlife Science	-	48	48	Geography	1	25	26
Non-Degree Agricultural Sciences	23	1	24	Geology	-	38	38
<b>TOTAL</b>	<b>2,210</b>	<b>414</b>	<b>2,624</b>	Marine Resource Management	-	24	24
<b><u>College of Business</u></b>				Ocean, Earth and Atmospheric Sciences	-	53	53
Accountancy	213	-	213	Oceanography	-	1	1
Pre-Accountancy	97	-	97	Sustainability	3	-	3
Apparel Design	33	-	33	Water Conflict Management and Transformation	-	24	24
Pre-Apparel	3	-	3	Non-Degree Earth, Ocean, Atmospheric Science	3	-	3
Business Administration	379	201	580	<b>TOTAL</b>	<b>710</b>	<b>221</b>	<b>931</b>
Pre-Business	1,576	-	1,576	<b><u>College of Education</u></b>			
Pre-MBA <sup>2</sup>	1	29	30	Adult and Higher Education	-	37	37
Business Administration and Accountancy	-	2	2	Counseling	-	114	114
Business Analytics	-	9	9	Education	80	86	166
Business Information Systems	128	-	128	Pre-Education	369	-	369
				Mathematics Education	-	4	4
				Science Education	-	11	11
				Teaching	-	25	25
				<b>TOTAL</b>	<b>449</b>	<b>277</b>	<b>726</b>

ACADEMIC UNIT	UNDER-GRAD	GRAD	TOTAL
<b><u>College of Engineering</u></b>			
Bioengineering	109	6	115
Pre-Bioengineering	227	-	227
Biological and Ecological Engineering	-	6	6
Chemical Engineering	307	77	384
Pre-Chemical Engineering	258	-	258
Civil Engineering	234	181	415
Pre-Civil Engineering	321	-	321
Computer Science	1,036	291	1,327
Pre-Computer Science	1,819	-	1,819
Construction Engineering Management <sup>1</sup>	213	4	217
Pre-Construction Engineering Management	200	-	200
Ecological Engineering	57	-	57
Pre-Ecological Engineering	47	-	47
Electrical and Computer Engineering	305	233	538
Pre-Electrical and Computer Engineering	419	-	419
Energy Systems Engineering	9	-	9
Pre-Energy Systems Engineering	24	-	24
Environmental Engineering	37	42	79
Pre-Environmental Engineering	78	-	78
Pre-General Engineering	210	-	210
Industrial Engineering	120	102	222
Pre-Industrial Engineering	86	-	86
International Studies	8	-	8
Manufacturing Engineering	45	-	45
Pre-Manufacturing Engineering	15	-	15
Materials Science	-	39	39
Mechanical Engineering	675	195	870
Pre-Mechanical Engineering	858	-	858
Medical Physics	-	1	1
Nuclear Engineering	89	59	148
Pre-Nuclear Engineering	91	-	91
Radiation Health Physics	12	76	88
Pre-Radiation Health Physics	11	-	11
Robotics	-	56	56
Sustainability	12	-	12
Non-Degree Pre-Engineering	38	-	38
<b>TOTAL</b>	<b>7,970</b>	<b>1,368</b>	<b>9,338</b>

**College of Forestry**

Forest Ecosystems and Society	-	53	53
Forest Engineering	37	-	37
Pre-Forest/Civil Engineering	18	-	18
Pre-Forest Engineering	22	-	22
Forest Management	2	-	2
Forest Resources	-	1	1
Forest Science	-	1	1
Forestry	67	-	67
Pre-Forestry	80	-	80
Forests and Climate Change	-	9	9
International Studies	2	-	2
Natural Resources	553	60	613
Recreation Resource Management	27	-	27
Renew able Materials	51	-	51
Sustainability	13	-	13

ACADEMIC UNIT	UNDER-GRAD	GRAD	TOTAL
Sustainable Forest Management	-	52	52
Sustainable Natural Resources	-	30	30
Tourism and Outdoor Leadership	13	-	13
Tourism, Recreation, and Adventure Leadership	9	-	9
Urban Forestry	-	20	20
Wood Science	-	32	32
Non-Degree Forestry	11	-	11
<b>TOTAL</b>	<b>905</b>	<b>258</b>	<b>1,163</b>

**Graduate School**

College and University Teaching	-	83	83
Comparative Health Sciences	-	25	25
Environmental Sciences	-	59	59
Interdisciplinary Studies	-	42	42
Molecular and Cellular Biology	-	24	24
Water Resources Engineering	-	26	26
Water Resources Policy and Management	-	7	7
Water Resources Science	-	33	33
Non-Degree Graduate Student	-	547	547
<b>TOTAL</b>	<b>-</b>	<b>846</b>	<b>846</b>

**College of Liberal Arts**

American Studies	5	-	5
Anthropology	261	-	261
Applied Anthropology	-	52	52
Applied Ethics	-	10	10
Applied Visual Arts	52	-	52
Art	61	-	61
College Student Services Administration	-	41	41
Creative Writing	-	28	28
Digital Communication Arts	381	-	381
Economics	329	-	329
English	184	26	210
Environmental Arts and Humanities	-	16	16
Ethnic Studies	14	-	14
Food in Culture and Social Justice	7	-	7
French	37	-	37
German	51	-	51
Graphic Design	114	-	114
Pre-Graphic Design	68	-	68
History	207	-	207
History of Science	-	12	12
International Studies	8	-	8
Language in Culture	1	-	1
Liberal Studies	225	-	225
Medical Humanities <sup>1</sup>	69	1	70
Music	136	-	136
Peace Studies	3	-	3
Philosophy	41	-	41
Political Science	308	-	308
Psychology	805	8	813
Public Policy	-	60	60
Religious Studies	14	-	14
Social Science	11	-	11
Sociology	334	-	334
Spanish	119	-	119

ACADEMIC UNIT	UNDER-GRAD	GRAD	FIRST PROF	TOTAL
<b><u>College of Liberal Arts (Cont)</u></b>				
Speech Communication	120	-	-	120
Pre-Communication	100	-	-	100
Sustainability	19	-	-	19
Women, Gender, and Sexuality Studies	34	28	-	62
Non-Degree Liberal Arts	93	-	-	93
<b>TOTAL</b>	<b>4,211</b>	<b>282</b>	<b>-</b>	<b>4,493</b>

<b><u>College of Pharmacy</u></b>				
Pharmaceutical Sciences	-	32	1	33
Pharmacy, Doctor of Pharmacy (4-year)	-	-	358	358
<b>TOTAL</b>	<b>-</b>	<b>32</b>	<b>359</b>	<b>391</b>

<b><u>College of Public Health and Human Sciences</u></b>				
Athletic Training	-	18	-	18
Gerontology	2	-	-	2
Human Development and Family Sciences	902	-	-	902
Human Development and Family Studies	-	29	-	29
Kinesiology	999	35	-	1,034
Nutrition	225	9	-	234
Public Health	323	207	-	530
Pre-Public Health	170	-	-	170
Sustainability	2	-	-	2
Non-Degree Public Health and Human Sciences	2	-	-	2
<b>TOTAL</b>	<b>2,625</b>	<b>298</b>	<b>-</b>	<b>2,923</b>

<b><u>College of Science</u></b>				
Biochemistry and Biophysics	165	25	-	190
Biochemistry and Molecular Biology	104	-	-	104
BioHealth Sciences	718	-	-	718
Biology	1,006	-	-	1,006
Chemistry	245	125	-	370
Data Analytics	-	38	-	38
General Science	34	-	-	34
Integrative Biology	-	46	-	46
International Studies	3	-	-	3
Mathematics	225	69	-	294
Microbiology	197	28	-	225
Physics	149	41	-	190
Statistics	-	62	-	62
Sustainability	2	-	-	2
Zoology	219	15	-	234
Non-Degree Science	102	1	-	103
<b>TOTAL</b>	<b>3,169</b>	<b>450</b>	<b>-</b>	<b>3,619</b>

<b><u>College of Veterinary Medicine</u></b>				
Veterinary Medicine - DVM	-	-	242	242
Veterinary Science	-	1	-	1
<b>TOTAL</b>	<b>-</b>	<b>1</b>	<b>242</b>	<b>243</b>

ACADEMIC UNIT	UNDER-GRAD	GRAD	FIRST PROF	TOTAL
<b><u>University Exploratory Studies</u></b>				
University Exploratory Studies	936	-	-	936
<b>TOTAL</b>	<b>936</b>	<b>-</b>	<b>-</b>	<b>936</b>

<b><u>Non-Degree INTO</u></b>				
Academic English	14	-	-	14
Academic English to Pathway	13	-	-	13
Study Abroad with English	1	-	-	1
Study Abroad with English Part 2	6	-	-	6
Visiting International Study Program	3	-	-	3
Undergraduate Pathway	344	-	-	344
Graduate Pathway	-	209	-	209
<b>TOTAL</b>	<b>381</b>	<b>209</b>	<b>-</b>	<b>590</b>

<b><u>University Honors College</u></b>				
Honors Scholar and Honors Associate <sup>3</sup>				
	1,187	-	-	1,187
<b>TOTAL</b>	<b>1,187</b>	<b>-</b>	<b>-</b>	<b>1,187</b>

	UNDER-GRAD	GRAD	FIRST-PROF	TOTAL
<b>TOTAL UNIVERSITY</b>	<b>27,650</b>	<b>4,899</b>	<b>601</b>	<b>33,150</b>

<sup>1</sup> Includes graduate/first professional students also pursuing an undergraduate degree.

<sup>2</sup> Includes undergraduate post baccalaureate students also pursuing a graduate program/certificate.

<sup>3</sup> Honors Scholars and Honors Associates do not add to the University total because they have already been counted in their major.

**Degree Programs with the Highest Enrollment  
(Last Year's Rank)**

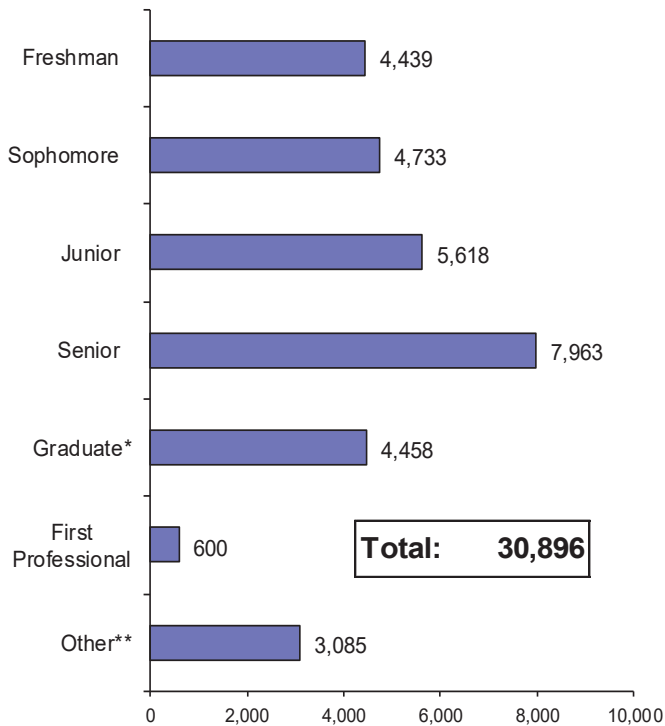
<b>Undergraduate</b>	
1. Computer Science* (1)	2,855
2. Business Administration* (2)	1,956
3. Mechanical Engineering* (3)	1,533
4. Biology (5)	1,006
5. Kinesiology (4)	999
6. Human Development and Family Sciences (6)	902
7. Psychology (7)	805
8. Electrical and Computer Engineering* (8)	724
9. BioHealth Sciences (9)	718
10. Fisheries and Wildlife Sciences (10)	668

\*Includes Pre-Majors

<b>Graduate / First Professional</b>	
1. Pharmacy, Doctor of Pharmacy (4-year) (1)	358
2. Computer Science (2)	291
3. Veterinary Medicine - DVM (5)	242
4. Electrical and Computer Engineering (3)	233
5. Business Administration* (4)	230
6. Public Health (8)	207
7. Mechanical Engineering (6)	195
8. Civil Engineering (7)	181
9. Chemistry (9)	125
10. Counseling (11)	114

\*Includes Pre-MBA

### Headcount Enrollment by Class Standing



\*Includes Non-Degree Graduate Students.

\*\*Includes Non-Degree Undergraduate and Post-Baccalaureate Students.

### Student Enrollment, Credit Hours, and FTE by Class Standing

Class Standing	Student Enrollment	Student Credit Hours	Student FTE
Freshman	4,439	59,261	3,950.7
Sophomore	4,733	62,928	4,195.2
Junior	5,618	72,208	4,813.9
Senior	7,963	98,861	6,590.7
Post Baccalaureate	2,168	14,637	975.8
Non-Degree Undergrad	917	8,310	554.0
<b>Total for Undergraduate</b>	<b>25,838</b>	<b>316,205</b>	<b>21,080</b>
Masters	1,882	18,926	1,577.2
Doctoral	1,634	19,171	2,130.1
Non-Degree Graduate	942	5,542	461.8
<b>Total for Graduate</b>	<b>4,458</b>	<b>43,639</b>	<b>4,169</b>
Doctor of Pharmacy	358	6,085	507.1
Veterinary Medicine	242	4,450	370.8
<b>Total for First Professional</b>	<b>600</b>	<b>10,535</b>	<b>878</b>
<b>GRAND TOTAL</b>	<b>30,896</b>	<b>370,379</b>	<b>26,127.4</b>

### Age of Students

	Undergraduate		Graduate		First Professional	
<b>Under 25 Years Men</b>	10,833	41.9%	588	13.2%	72	12.0%
<b>25 Years or Older Men</b>	3,125	12.1%	1,744	39.1%	114	19.0%
<b>Under 25 Years Women</b>	9,414	36.4%	496	11.1%	181	30.2%
<b>25 Years or Older Women</b>	2,466	9.5%	1,630	36.6%	233	38.8%
<b>Total</b>	<b>25,838</b>	<b>100.0%</b>	<b>4,458</b>	<b>100.0%</b>	<b>600</b>	<b>100.0%</b>

### Corvallis Campus\* Undergraduate Oregon Residents

Degree Seeking only	2007	2013	2014	2015	2016	2017
<b>Oregon Residents</b>	13,147	14,491	14,412	14,518	14,464	<b>14,301</b>
<b>% Oregon Residents</b>	88.0%	75.2%	74.8%	75.1%	74.2%	<b>73.1%</b>
<b>All Undergraduates</b>						
<b>Oregon Residents</b>	13,219	14,531	14,449	14,546	14,489	<b>14,337</b>
<b>% Oregon Residents</b>	87.6%	73.8%	73.0%	73.3%	72.2%	<b>71.3%</b>

\*Students with at least one course at Corvallis Campus

### New High Achieving\* Oregon High School Graduates

	2016	2017**	Change Number	Percent
<b>New Oregon HS Grads</b>	2,726			
<b>High Achievers</b>	1,281			
<b>% High Achievers</b>	47.0%			

### New High Achieving\* Oregon High School Graduate by College

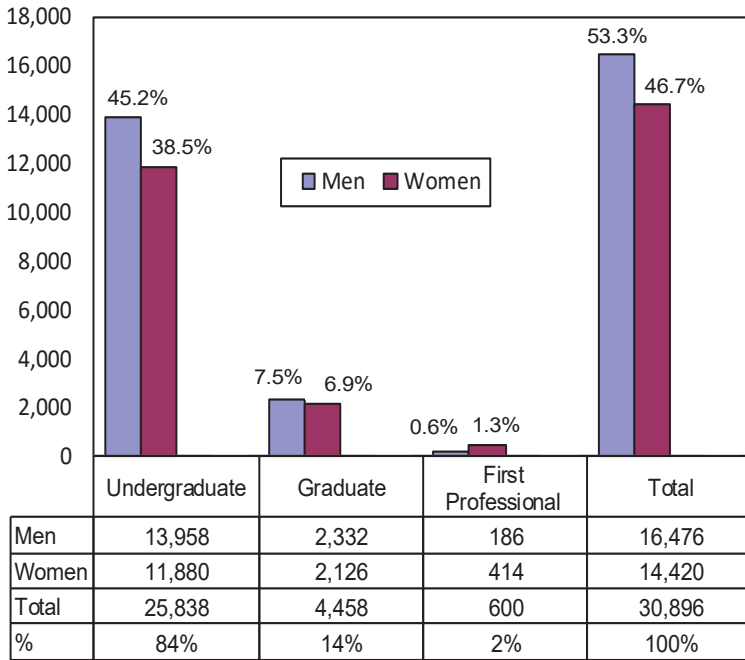
	2016			2017**		
	High Achievers	Oregon HS Grads	% High Achievers	High Achievers	Oregon HS Grads	% High Achievers
Agricultural Sciences	67	127	52.8%			
Business	126	391	32.2%			
Earth, Ocean, and Atmos. Sci	17	43	39.5%			
Engineering	473	854	55.4%			
Forestry	12	36	33.3%			
Liberal Arts	99	282	35.1%			
Public Health and Human Sci	100	228	43.9%			
Science	303	535	56.6%			
Univ. Explor. Studies	84	230	36.5%			

\*Students with Weighted High School GPA of 3.75 or higher.

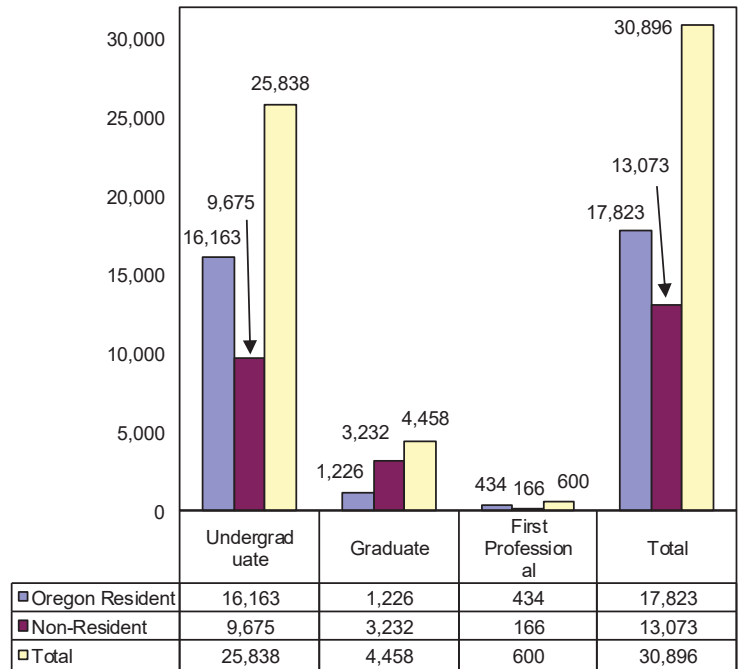
\*\*Fall 2017 numbers are not available at this time.



### Enrollment by Sex—Binary and Student Level

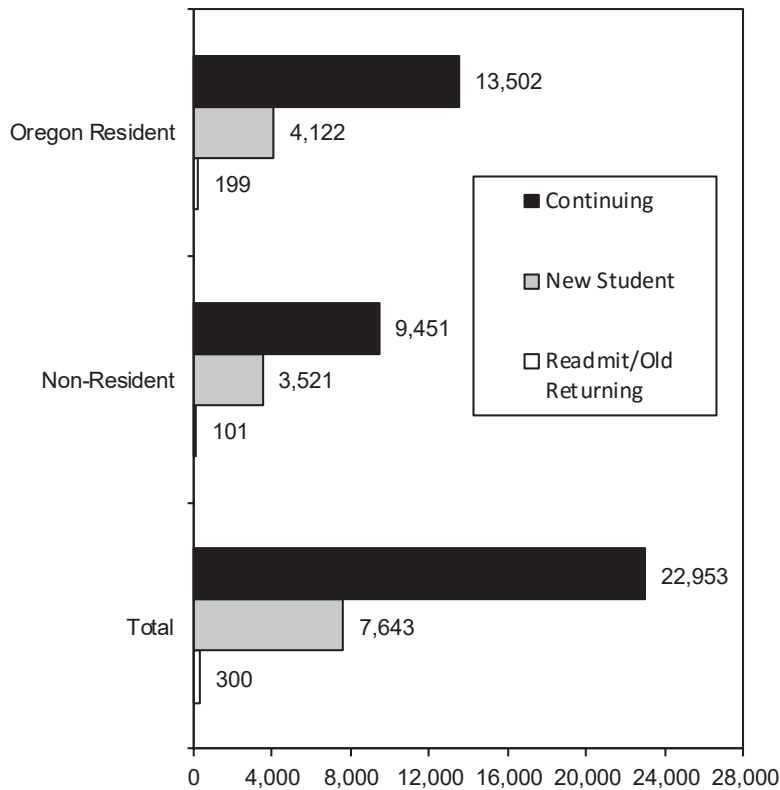


### By Residency\* and Student Level



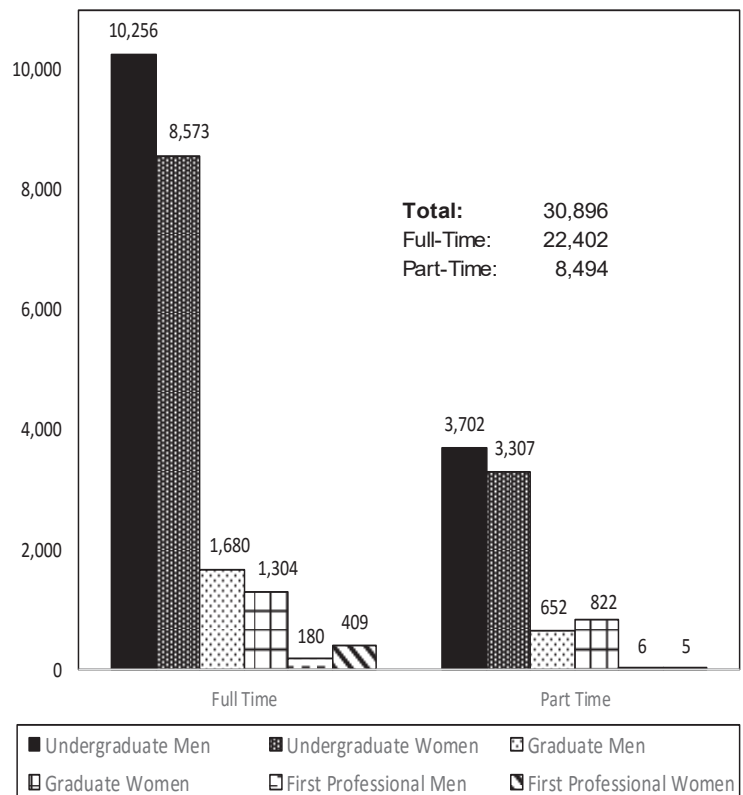
\*Residency is based upon tuition and fee status

### All Students by Residency\* and Status



\*Residency is based upon tuition and fee status

### Student Enrollment Full Time and Part Time, by Sex—Binary



## Enrollment by Academic Unit, Ethnicity, and Student Level

Academic Unit	American Indian/ Alaskan Native				Asian				Black				Hispanic				Native Hawaiian/ Pacific Islander			
	Under-Grad	Grad	First Prof.	Total	Under-Grad	Grad	First Prof.	Total	Under-Grad	Grad	First Prof.	Total	Under-Grad	Grad	First Prof.	Total	Under-Grad	Grad	First Prof.	Total
Ag. Sciences	13	4	-	17	46	8	-	54	20	2	-	22	204	31	-	235	-	-	-	-
Business	14	-	-	14	207	11	-	218	38	7	-	45	301	9	-	310	10	-	-	10
Earth, Ocean, and Atmos. Sci	9	1	-	10	16	5	-	21	4	1	-	5	53	11	-	64	1	-	-	1
Education	-	3	-	3	-	14	-	14	-	14	-	14	-	28	-	28	-	-	-	-
Engineering	25	-	-	25	829	47	-	876	101	7	-	108	609	40	-	649	20	1	-	21
Forestry	6	-	-	6	10	3	-	13	4	1	-	5	55	13	-	68	2	1	-	3
Graduate School	-	7	-	7	-	35	-	35	-	25	-	25	-	62	-	62	-	2	-	2
Liberal Arts	28	3	-	31	164	13	-	177	82	5	-	87	450	34	-	484	24	1	-	25
Pharmacy	-	-	-	-	-	1	135	136	-	-	5	5	-	3	24	27	-	-	-	-
Public Health and Human Sci	25	2	-	27	179	20	-	199	25	5	-	30	331	31	-	362	10	-	-	10
Science	12	1	-	13	430	19	-	449	45	4	-	49	344	31	-	375	4	-	-	4
Univ. Explor. Studies	6	-	-	6	52	-	-	52	21	-	-	21	107	-	-	107	7	-	-	7
Vet. Medicine	-	-	-	-	-	-	14	14	-	-	2	2	-	-	16	16	-	-	-	-
Non-Degree INTO	-	-	-	-	-	-	-	-	-	-	-	-	-	-	-	-	-	-	-	-
<b>Total</b>	<b>138</b>	<b>21</b>	<b>-</b>	<b>159</b>	<b>1,933</b>	<b>176</b>	<b>149</b>	<b>2,258</b>	<b>340</b>	<b>71</b>	<b>7</b>	<b>418</b>	<b>2,454</b>	<b>293</b>	<b>40</b>	<b>2,787</b>	<b>78</b>	<b>5</b>	<b>-</b>	<b>83</b>

Academic Unit	Two or More Races				White				International*				Decline/Missing				TOTAL			
	Under-Grad	Grad	First Prof.	Total	Under-Grad	Grad	First Prof.	Total	Under-Grad	Grad	First Prof.	Total	Under-Grad	Grad	First Prof.	Total	Under-Grad	Grad	First Prof.	Total
Ag. Sciences	145	8	-	153	1,600	260	-	1,860	54	68	-	122	63	13	-	76	2,145	394	-	2,539
Business	220	2	-	222	2,128	91	-	2,219	593	56	-	649	36	8	-	44	3,547	184	-	3,731
Earth, Ocean, and Atmos. Sci	45	8	-	53	447	126	-	573	23	20	-	43	22	11	-	33	620	183	-	803
Education	-	17	-	17	20	183	-	203	-	4	-	4	-	12	-	12	20	275	-	295
Engineering	519	30	-	549	4,600	406	-	5,006	814	623	-	1,437	231	30	-	261	7,748	1,184	-	8,932
Forestry	56	6	-	62	721	168	-	889	4	30	-	34	24	14	-	38	882	236	-	1,118
Graduate School	-	34	-	34	-	474	-	474	-	57	-	57	-	67	-	67	-	763	-	763
Liberal Arts	291	17	-	308	2,584	151	-	2,735	196	49	-	245	84	6	-	90	3,903	279	-	4,182
Pharmacy	-	-	15	15	-	9	169	178	-	16	5	21	-	3	5	8	-	32	358	390
Public Health and Human Sci	193	20	-	213	1,719	152	-	1,871	51	40	-	91	27	11	-	38	2,560	281	-	2,841
Science	240	13	-	253	1,827	240	-	2,067	140	115	-	255	54	14	-	68	3,096	437	-	3,533
Univ. Explor. Studies	67	-	-	67	629	-	-	629	17	-	-	17	30	-	-	30	936	-	-	936
Vet. Medicine	-	-	9	9	-	1	192	193	-	-	1	1	-	-	8	8	-	1	242	243
Non-Degree INTO	-	-	-	-	-	-	-	-	374	206	-	580	7	3	-	10	381	209	-	590
<b>Total</b>	<b>1,776</b>	<b>155</b>	<b>24</b>	<b>1,955</b>	<b>16,275</b>	<b>2,261</b>	<b>361</b>	<b>18,897</b>	<b>2,266</b>	<b>1,284</b>	<b>6</b>	<b>3,556</b>	<b>578</b>	<b>192</b>	<b>13</b>	<b>783</b>	<b>25,838</b>	<b>4,458</b>	<b>600</b>	<b>30,896</b>

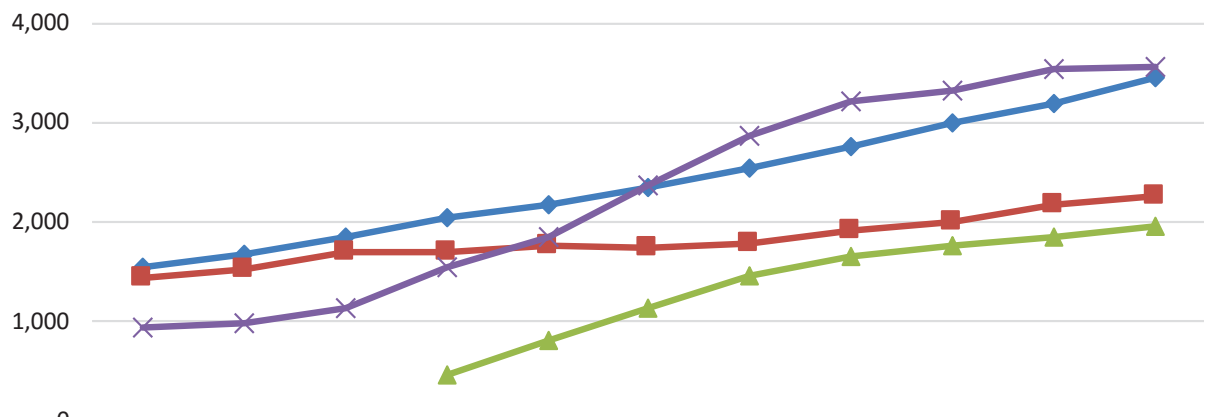
\*International students are identified by citizenship code. Students with unknown visa type are not included in International counts.

## Minority Enrollment by Sex—Binary and Academic Unit

	Agricultural Sciences	Business	Earth, Ocean, & Atmospheric Sciences	Education	Engineering	Forestry	Graduate School	Liberal Arts	Pharmacy	Public Health & Human Sciences	Science	Univ. Explor. Studies	Veterinary Medicine	Non-Degree INTO	Total
Men	171	451	69	26	1,702	87	61	434	77	246	455	138	7	0	3,924
Women	310	368	85	50	526	70	104	678	106	595	688	122	34	0	3,736
<b>Total</b>	<b>481</b>	<b>819</b>	<b>154</b>	<b>76</b>	<b>2,228</b>	<b>157</b>	<b>165</b>	<b>1,112</b>	<b>183</b>	<b>841</b>	<b>1,143</b>	<b>260</b>	<b>41</b>	<b>0</b>	<b>7,660</b>

## Minority Enrollment Trend

Fall Term	American Indian/ Alaskan Native	Asian	Black	Hispanic	Native Hawaiian/ Pacific Islander	Two or More Races	TOTAL	One Year % change
2007	248	1,439	297	793	198		2,975	6.0%
2008	256	1,527	321	911	192		3,207	7.8%
2009	292	1,698	321	1,024	207		3,542	10.4%
2010	255	1,696	325	1,292	160	451	4,179	18.0%
2011	248	1,754	303	1,483	128	805	4,721	13.0%
2012	214	1,742	334	1,685	111	1,138	5,224	10.7%
2013	184	1,774	366	1,881	103	1,456	5,764	10.3%
2014	172	1,901	395	2,101	98	1,653	6,320	9.6%
2015	167	2,004	406	2,330	81	1,766	6,754	6.9%
2016	154	2,168	418	2,536	82	1,846	7,204	6.7%
2017	159	2,258	418	2,787	83	1,955	7,660	6.3%



	2007	2008	2009	2010	2011	2012	2013	2014	2015	2016	2017
URM*	1,536	1,680	1,844	2,032	2,162	2,344	2,534	2,766	2,984	3,190	3,447
Asian	1,439	1,527	1,698	1,696	1,754	1,742	1,774	1,901	2,004	2,168	2,258
Two or More Races				451	805	1,138	1,456	1,653	1,766	1,846	1,955
International	928	988	1,120	1,548	1,852	2,362	2,859	3,202	3,328	3,529	3,556

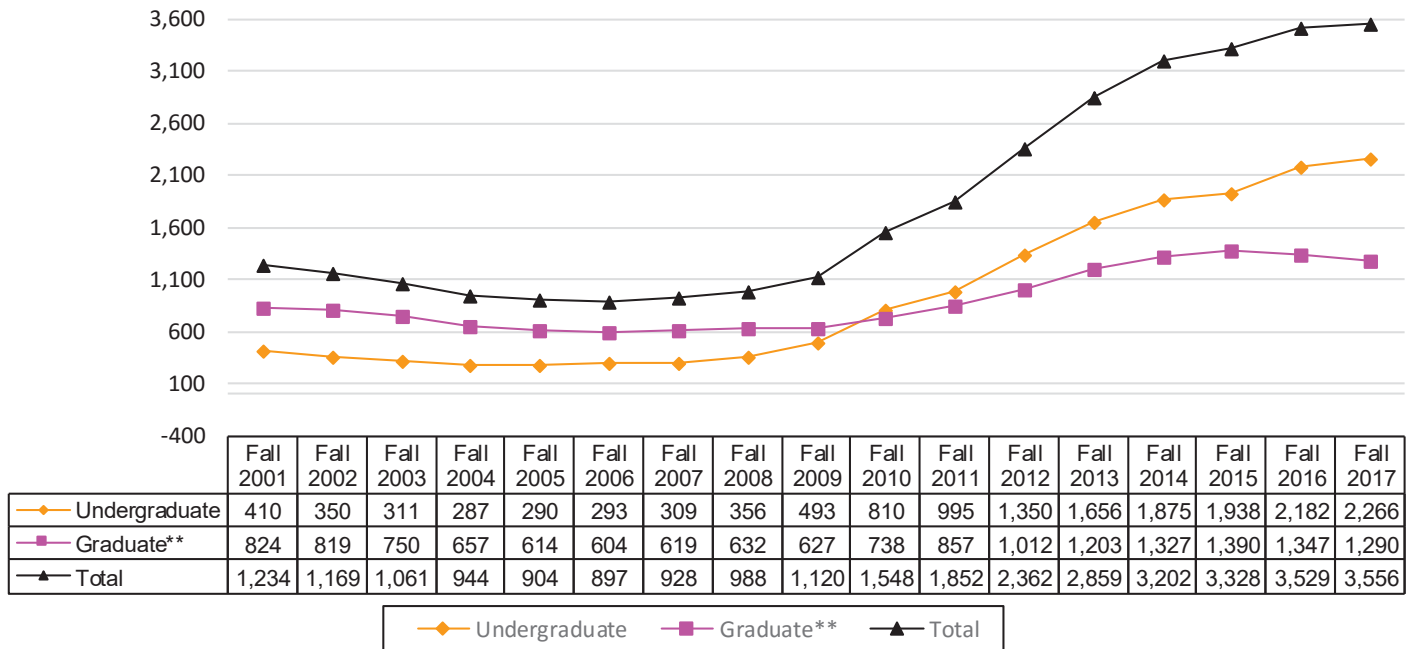
\*URM includes American Indian/Alaskan Native, Black, Hispanic, and Native Hawaiian/Pacific Islander.

## Enrollment by Geographic Origin

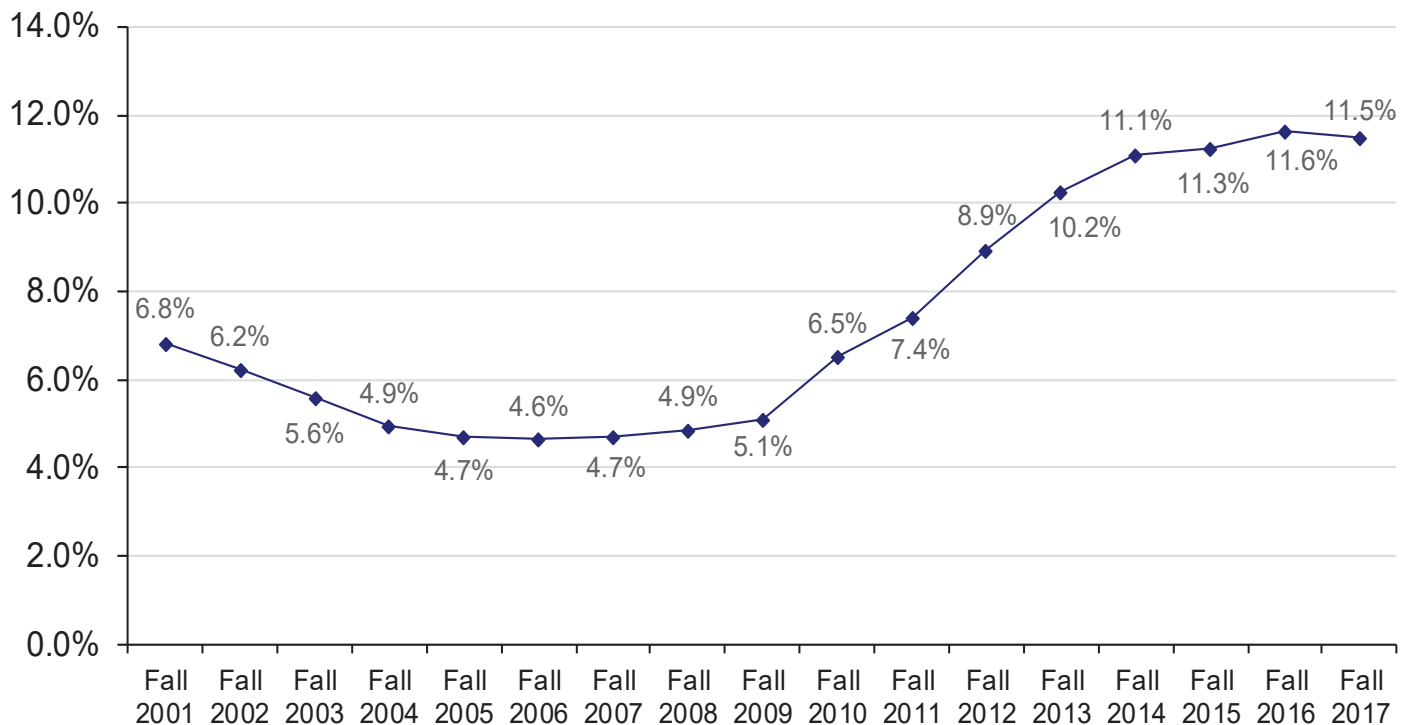
<b>Oregon Counties</b>					
Baker	44	Nevada	145	Iraq	30
Benton	1,499	New Hampshire	19	Israel	6
Clackamas	2,304	New Jersey	98	Italy	7
Clatsop	121	New Mexico	77	Jamaica	1
Columbia	153	New York	186	Japan	50
Coos	170	North Carolina	131	Jordan	6
Crook	51	North Dakota	18	Kazakhstan	11
Curry	43	Ohio	129	Kenya	6
Deschutes	750	Oklahoma	57	Kuwait	54
Douglas	362	Pennsylvania	138	Kyrgyzstan	1
Gilliam	6	Rhode Island	19	Lebanon	3
Grant	16	South Carolina	60	Libya	8
Harney	27	South Dakota	16	Macedonia	1
Hood River	131	Tennessee	74	Malawi	2
Jackson	557	Texas	371	Malaysia	79
Jefferson	71	U.S. Possessions/Territories	109	Maldives	1
Josephine	191	Utah	95	Malta	2
Klamath	174	Vermont	15	Mauritius	3
Lake	32	Virginia	170	Mexico	22
Lane	1,347	Washington	1,492	Mongolia	3
Lincoln	199	West Virginia	19	Montenegro	1
Linn	789	Wisconsin	87	Morocco	3
Malheur	79	Wyoming	30	Namibia	1
Marion	1,402	<b>Total for U.S. States</b>	<b>9,536</b>	Nepal	16
Morrow	55			Netherlands	8
Multnomah	2,166			New Zealand	8
Polk	458			Nigeria	15
Sherman	15			Norway	5
Tillamook	91			Oman, Sultanate Of	66
Umatilla	193			Pakistan	41
Union	85			Panama	3
Wallowa	25			Peru	11
Wasco	75			Philippines	2
Washington	3,407			Poland	2
Wheeler	4			Qatar	34
Yamhill	448			Romania	1
<b>Total for Oregon</b>	<b>17,540</b>			Russia	15
				Rwanda	2
				Saudi Arabia	262
				Senegal	1
				Serbia	1
				Singapore, Republic of	11
				Slovakia	2
				South Africa	4
				South Korea	148
				Spain	13
				Sri Lanka	15
				Sweden	4
				Switzerland	1
				Syria	1
				Taiwan, Republic of China	144
				Tanzania	1
				Thailand	42
				Tunisia	3
				Turkey	21
				Turks & Caicos Islands	1
				Uganda	1
				Ukraine	5
				United Arab Emirates	55
				United Kingdom	25
				Uruguay	1
				Venezuela	5
				Vietnam	70
				Yemen	3
				Zaire	1
				Zimbabwe	1
				<b>Total for Foreign Countries</b>	<b>3,627</b>
				<b>Unknown</b>	<b>193</b>
				<b>GRAND TOTAL</b>	<b>30,896</b>

\*Foreign countries are based upon country of citizenship.

## International\* Student Enrollment Fall Term 2001 to Fall Term 2017



## International Student Percent of Total OSU Enrollment



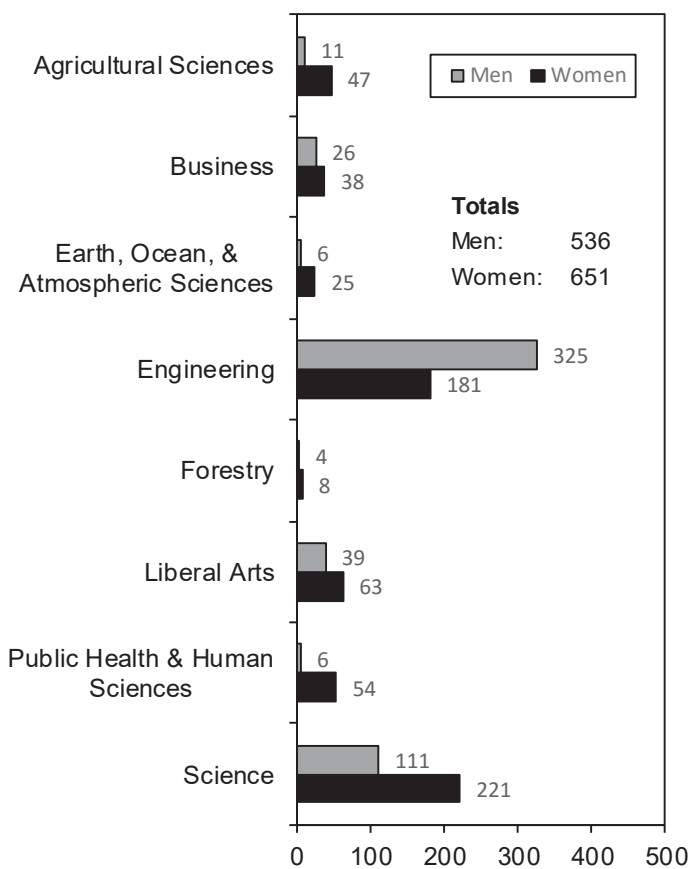
\*Fall 2001-2006, International students are identified by residency code. Fall 2007-2009, international students were identified by Admit Type code. Since Fall 2010, international students were identified by citizenship code. Students with unknown visa type are not included in International counts for Fall 2015-2017.

\*\* Includes First Professional Students.

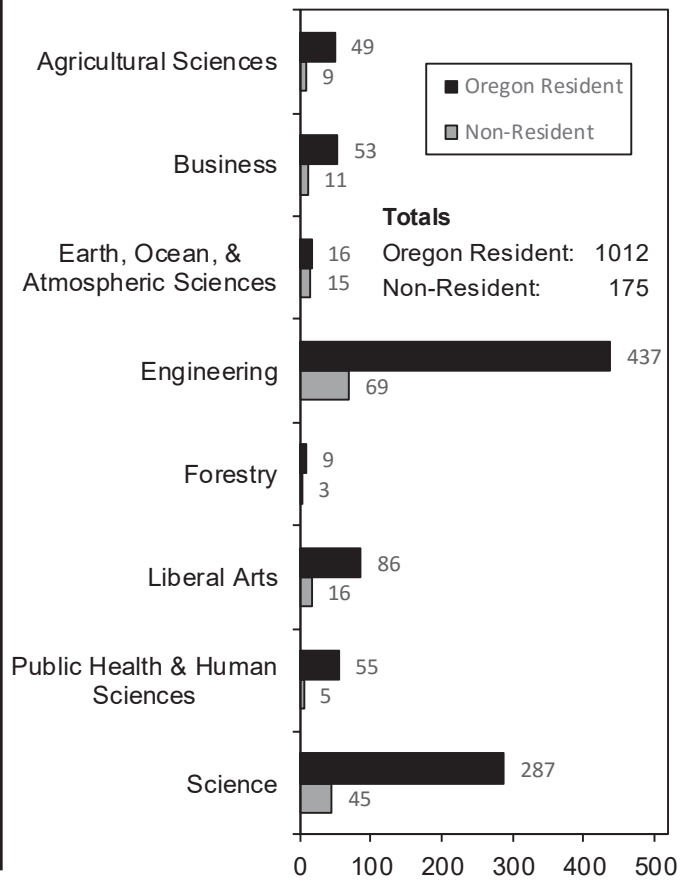
## University Honors College Students By Academic Unit and Student Class Standing

Academic Unit	Freshman	Sophomore	Junior	Senior	Total	% of Undergrad Enrollment for College
Agricultural Sciences	7	11	16	24	<b>58</b>	<b>2.7</b>
Business	22	15	12	15	<b>64</b>	<b>1.8</b>
Earth, Ocean, and Atmospheric Sciences	8	7	9	7	<b>31</b>	<b>5.0</b>
Engineering	86	152	99	169	<b>506</b>	<b>6.5</b>
Forestry	3	1	3	5	<b>12</b>	<b>1.4</b>
Liberal Arts	24	23	26	29	<b>102</b>	<b>2.6</b>
Public Health and Human Sciences	6	20	16	18	<b>60</b>	<b>2.3</b>
Science	49	101	86	96	<b>332</b>	<b>10.7</b>
University Exploratory Studies	9	11	1	1	<b>22</b>	<b>2.4</b>
<b>TOTAL</b>	<b>214</b>	<b>341</b>	<b>268</b>	<b>364</b>	<b>1,187</b>	<b>4.7</b>

### By Academic Unit and Sex—Binary



### By Academic Unit and Residency



## OSU Extended Campus

### Enrollment, Credit Hours, and FTE by Class Standing

Students Who Took Courses Through Ecampus\*

<u>Class Standing</u>	<u>Student Enrollment</u>	<u>Student Credit Hours</u>	<u>Student FTE</u>
Freshman	614	2,844	189.6
Sophomore	1,481	7,157	477.1
Junior	2,765	15,681	1,045.4
Senior	4,143	24,728	1,648.5
Post Baccalaureate	1,990	12,458	830.5
Non-Degree Undergrad	386	1,475	98.3
<b>Total for Undergraduate</b>	<b>11,379</b>	<b>64,343</b>	<b>4,289.5</b>
Masters	507	2,318	193.2
Doctoral	192	778	86.4
Non-Degree Graduate	643	2,552	212.7
<b>Total for Graduate</b>	<b>1,342</b>	<b>5,648</b>	<b>492.3</b>
Doctor of Pharmacy	4	12	1.0
Veterinary Medicine	-	-	-
<b>Total for First Professional</b>	<b>4</b>	<b>12</b>	<b>1.0</b>
<b>GRAND TOTAL (Fall 2017)</b>	<b>12,725</b>	<b>70,003</b>	<b>4,782.8</b>
(Fall 2016)	11,251	62,569	4,280.5

\*Includes students that also took on-campus courses.

### Enrollment by Class Standing and Residency

Students Who Took Courses Only Through Ecampus\*\*

<u>Class Standing</u>	<u>Oregon Resident</u>	<u>Non-Resident</u>	<u>Total</u>
Freshman	41	104	145
Sophomore	112	202	314
Junior	367	525	892
Senior	784	871	1,655
Post Baccalaureate	184	1,567	1,751
Non-Degree Undergrad	37	283	320
<b>Total for Undergraduate</b>	<b>1,525</b>	<b>3,552</b>	<b>5,077</b>
Masters	160	183	343
Doctoral	39	84	123
Non-Degree Graduate	123	421	544
<b>Total for Graduate</b>	<b>322</b>	<b>688</b>	<b>1,010</b>
Doctor of Pharmacy	-	-	-
Veterinary Medicine	-	-	-
<b>Total for First Professional</b>	<b>-</b>	<b>-</b>	<b>-</b>
<b>GRAND TOTAL (Fall 2017)</b>	<b>1,847</b>	<b>4,240</b>	<b>6,087</b>
(Fall 2016)	1,855	3,827	5,682

\*\*Table indicates students enrolled only in ECampus-offered courses; i.e., students are not enrolled in any on-campus courses.

## Student Credit Hours by Academic Unit\* and Class Standing

Academic Unit*	Freshman	Sophomore	Junior	Senior	Post Bac	Non-Degree Undergrad	Undergrad Total	Master	Doctorate	Non-Degree Grad	Grad Total	First Professional	TOTAL
AG	378	1,196	2,753	5,082	726	151	10,286	175	17	459	651	-	10,937
BUS	62	406	1,427	2,751	50	-	4,696	291	-	32	323	10	5,029
EOAS	128	447	647	1,153	105	24	2,504	46	-	163	209	-	2,713
ED	12	36	93	114	13	6	274	669	619	177	1,465	-	1,739
ENGR	38	246	677	938	10,058	48	12,005	406	46	36	488	-	12,493
FOR	50	113	385	1,061	95	30	1,734	194	11	224	429	-	2,163
LA	1,414	2,802	5,552	8,535	763	793	19,859	174	7	516	697	-	20,556
PHARM	6	20	30	30	-	-	86	-	-	4	4	2	92
PHHS	253	782	1,950	2,349	60	25	5,419	114	20	294	428	-	5,847
SCI	443	1,071	2,132	2,673	574	393	7,286	146	14	606	766	-	8,052
ALS**	60	38	30	12	8	2	150	-	-	-	-	-	150
IP***	-	-	3	7	4	-	14	-	-	-	-	-	14
GRAD	-	-	2	23	2	3	30	103	44	41	188	-	218
<b>Total SCH</b>	<b>2,844</b>	<b>7,157</b>	<b>15,681</b>	<b>24,728</b>	<b>12,458</b>	<b>1,475</b>	<b>64,343</b>	<b>2,318</b>	<b>778</b>	<b>2,552</b>	<b>5,648</b>	<b>12</b>	<b>70,003</b>
<b>Total FTE</b>	<b>189.6</b>	<b>477.1</b>	<b>1,045.4</b>	<b>1,648.5</b>	<b>830.5</b>	<b>98.3</b>	<b>4,289.5</b>	<b>193.2</b>	<b>86.4</b>	<b>212.7</b>	<b>492.3</b>	<b>1.0</b>	<b>4,782.8</b>

\*Academic Units are those that offered the courses. \*\*Academic Learning Services. \*\*\*Interdisciplinary Programs.

## OSU Extended Campus Student Enrollment by Academic Unit and Ethnicity

All Students Who Took Courses Through ECampus

Acad. Unit	American Indian /Alaskan Native		Asian		Black		Hispanic		Native Hawaiian/ Pacific Islander		Two or More Races		White		International		Declined to Respond / Missing		TOTAL	
	Under-grad	Grad Total	Under-grad	Grad Total	Under-grad	Grad Total	Under-grad	Grad Total	Under-grad	Grad Total	Under-grad	Grad Total	Under-grad	Grad Total	Under-grad	Grad Total	Under-grad	Grad Total	Under-grad	Grad Total
Ag. Sciences	10	3 13	16	2 18	15	1 16	104	6 110	-	- -	83	1 84	991	73 1,064	25	- 25	49	5 54	1,293	91 1,384
Business	3	- 3	71	8 79	19	5 24	110	5 115	6	- 6	85	- 85	803	43 846	326	4 330	13	6 19	1,436	71 1,507
Earth, Ocean, and Atmos. Sci	3	1 4	6	1 7	3	- 3	32	5 37	-	- -	18	1 19	260	36 296	16	- 16	16	3 19	354	47 401
Education	-	2 2	-	11 11	-	12 12	-	24 24	-	- -	-	12 12	8	156 164	-	1 1	-	10 10	8	228 236
Engineering	7	- 7	367	10 377	56	1 57	238	7 245	10	- 10	155	7 162	1,680	70 1,750	319	31 350	157	4 161	2,989	130 3,119
Forestry	4	- 4	5	3 8	3	1 4	32	10 42	1	1 2	41	2 43	451	89 540	2	- 2	17	11 28	556	117 673
Graduate School	-	7 7	-	21 21	-	17 17	-	47 47	-	2 2	-	24 24	-	336 336	-	16 16	-	52 52	-	522 522
Liberal Arts	14	- 14	85	- 85	60	1 61	236	2 238	18	- 18	154	2 156	1,446	20 1,466	109	3 112	60	- 60	2,182	28 2,210
Pharmacy*	-	- -	-	- -	-	- -	-	- -	-	- -	-	1 1	-	3 3	-	1 1	-	- -	-	5 5
Public Health and Human Sci	13	- 13	80	5 85	15	- 15	145	9 154	5	- 5	103	6 109	904	35 939	28	4 32	17	2 19	1,310	61 1,371
Science	5	- 5	114	2 116	17	- 17	95	2 97	1	- 1	67	1 68	507	33 540	39	3 42	23	2 25	868	43 911
Univ. Explor. Studies	4	- 4	13	- 13	20	- 20	25	- 25	4	- 4	28	- 28	254	- 254	12	- 12	22	- 22	382	- 382
Veterinary Medicine*	-	- -	-	- -	-	- -	-	- -	-	- -	-	- -	-	- -	-	- -	-	- -	-	- -
Non-Degree INTO	-	- -	-	- -	-	- -	-	- -	-	- -	-	- -	-	- -	-	3 3	-	- -	-	3 3
<b>Total</b>	<b>63</b>	<b>13 76</b>	<b>757</b>	<b>63 820</b>	<b>208</b>	<b>38 246</b>	<b>1,017</b>	<b>117 1,134</b>	<b>45</b>	<b>3 48</b>	<b>734</b>	<b>57 791</b>	<b>7,304</b>	<b>894 8,198</b>	<b>876</b>	<b>66 942</b>	<b>374</b>	<b>95 469</b>	<b>11,378</b>	<b>1,346 12,724</b>

\*First Professional students are included in the graduate totals.



## Cascades Campus Enrollment

Fall Term 2017				
Enrollment Type		2016	2017	Change
<b>OSU-Cascades Enrollment*</b>	<b>Headcount</b>	1,122	<b>1,204</b>	<b>7.3%</b>
	<b>Term FTE</b>	693.3	<b>737.4</b>	<b>6.4%</b>

<i>COCC Enrolled Students (OSU Admitted)**</i>	<i>Headcount</i>	93	<b>43</b>	<b>-53.8%</b>
	<i>Term FTE</i>	54.1	<b>24.5</b>	<b>-54.7%</b>
<i>Total Students Receiving Services</i>	<i>Headcount</i>	1,215	<b>1,247</b>	<b>2.6%</b>
	<i>Term FTE</i>	747.4	<b>761.9</b>	<b>1.9%</b>

\*Source: Office of Institutional Research, Oregon State University.

\*\*Source: OSU-Cascades.

## Oregon State University—Cascades Campus

	2016		2017		Change	
	<u>Headcount</u>	<u>Percent</u>	<u>Headcount</u>	<u>Percent</u>	<u>Headcount</u>	<u>Percent</u>
<b>Women</b>	620	55.3%	<b>682</b>	<b>56.6%</b>	62	10.0%
<b>Men</b>	502	44.7%	<b>522</b>	<b>43.4%</b>	20	4.0%
<b>Full-Time</b>	450	40.1%	<b>496</b>	<b>41.2%</b>	46	10.2%
<b>Part-Time</b>	672	59.9%	<b>708</b>	<b>58.8%</b>	36	5.4%
<b>Undergraduate</b>	912	81.3%	<b>955</b>	<b>79.3%</b>	43	4.7%
<b>Graduate</b>	210	18.7%	<b>249</b>	<b>20.7%</b>	39	18.6%
<b>U.S. Minorities Total</b>	205	18.3%	<b>198</b>	<b>16.4%</b>	-7	-3.4%
<b>American Indian/Alaskan Native</b>	8	0.7%	<b>13</b>	<b>1.1%</b>	5	62.5%
<b>Asian</b>	23	2.0%	<b>21</b>	<b>1.7%</b>	-2	-8.7%
<b>Black</b>	5	0.4%	<b>8</b>	<b>0.7%</b>	3	60.0%
<b>Hispanic</b>	93	8.3%	<b>83</b>	<b>6.9%</b>	-10	-10.8%
<b>Native Hawaiian/Pacific Islander</b>	3	0.3%	<b>0</b>	<b>0.0%</b>	-3	-100.0%
<b>Two or More Races</b>	73	6.5%	<b>73</b>	<b>6.1%</b>	0	0.0%
<b>International</b>	5	0.4%	<b>9</b>	<b>0.7%</b>	4	80.0%
<b>Oregon Residents</b>	1,035	92.2%	<b>1,112</b>	<b>92.4%</b>	77	7.4%
<b>Non-Residents</b>	87	7.8%	<b>92</b>	<b>7.6%</b>	5	5.7%
<b>Veteran Total</b>	74	6.6%	<b>74</b>	<b>6.1%</b>	0	0.0%
<b>Undergraduate</b>	69		<b>68</b>		-1	-1.4%
<b>% of Undergraduate</b>	7.6%		<b>7.1%</b>			
<b>Graduate</b>	5		<b>6</b>		1	20.0%
<b>% of Graduate</b>	2.4%		<b>2.4%</b>			
<b>First Generation College (Undergraduate)</b>	323		<b>306</b>		-17	-5.3%
<b>% of Undergraduate</b>	35.4%		<b>32.0%</b>			

## Oregon State University - Cascades Campus

Class Standing		2016	2017	Change
Freshman	Headcount	73	<b>96</b>	31.5%
	Credit Hours	660	<b>955</b>	44.7%
	FTE*	44.0	<b>63.7</b>	44.7%
Sophomore	Headcount	116	<b>129</b>	11.2%
	Credit Hours	749	<b>1155</b>	54.2%
	FTE*	49.9	<b>77.0</b>	54.3%
Junior	Headcount	285	<b>248</b>	-13.0%
	Credit Hours	2,456	<b>2,218</b>	-9.7%
	FTE*	163.7	<b>147.9</b>	-9.7%
Senior	Headcount	406	<b>417</b>	2.7%
	Credit Hours	3,966	<b>4,088</b>	3.1%
	FTE*	264.4	<b>272.5</b>	3.1%
Postbac Degree Seeking	Headcount	24	<b>27</b>	12.5%
	Credit Hours	158	<b>203</b>	28.5%
	FTE*	10.5	<b>13.5</b>	28.9%
Non-degree Undergraduate	Headcount	8	<b>38</b>	375.0%
	Credit Hours	31	<b>68</b>	119.4%
	FTE*	2.1	<b>4.5</b>	115.9%
<b>Undergraduate Subtotal</b>	Headcount	<b>912</b>	<b>955</b>	<b>4.7%</b>
	Credit Hours	<b>8,020</b>	<b>8,687</b>	<b>8.3%</b>
	FTE*	<b>534.7</b>	<b>579.1</b>	<b>8.3%</b>
Masters	Headcount	151	<b>155</b>	2.6%
	Credit Hours	1,761	<b>1,694</b>	-3.8%
	FTE*	146.8	<b>141.2</b>	-3.8%
Non-Degree Graduate	Headcount	59	<b>94</b>	59.3%
	Credit Hours	142	<b>205</b>	44.4%
	FTE*	11.8	<b>17.1</b>	44.8%
<b>Graduate Subtotal</b>	Headcount	<b>210</b>	<b>249</b>	<b>18.6%</b>
	Credit Hours	<b>1,903</b>	<b>1,899</b>	<b>-0.2%</b>
	FTE*	<b>158.6</b>	<b>158.3</b>	<b>-0.2%</b>
<b>TOTAL</b>	Headcount	<b>1,122</b>	<b>1,204</b>	<b>7.3%</b>
	Credit Hours	<b>9,923</b>	<b>10,586</b>	<b>6.7%</b>
	FTE*	<b>693.3</b>	<b>737.4</b>	<b>6.4%</b>

\* FTE divisor: Undergraduate, 15 credits; Graduate, 12 credits

# INTO Oregon State University

## Fall Term 2017 Enrollment

	2016		2017		Change	
	Headcount	Percent	Headcount	Percent	Headcount	Percent
Academic English	407	39.8%	<b>288</b>	<b>32.1%</b>	-119	-29.2%
General English	35	3.4%	<b>0</b>	<b>0.0%</b>	-35	-100.0%
Graduate Pathways	168	16.4%	<b>225</b>	<b>25.1%</b>	57	33.9%
OSU-Student-CAP	8	0.8%	<b>6</b>	<b>0.7%</b>	-2	-25.0%
Study Abroad	10	1.0%	<b>9</b>	<b>1.0%</b>	-1	-10.0%
Undergraduate Pathways	395	38.6%	<b>370</b>	<b>41.2%</b>	-25	-6.3%
Female	314	30.7%	<b>231</b>	<b>25.7%</b>	-83	-26.4%
Male	709	69.3%	<b>667</b>	<b>74.3%</b>	-42	-5.9%
25 and Older	197	19.3%	<b>116</b>	<b>12.9%</b>	-81	-41.1%
Less than 25	826	80.7%	<b>782</b>	<b>87.1%</b>	-44	-5.3%
<b>Total</b>	<b>1,023</b>	<b>100.0%</b>	<b>898</b>	<b>100.0%</b>	<b>-125</b>	<b>-12.2%</b>

Enrollment by Country		
Country	Headcount	Percent
Bolivia	1	0.1%
Brazil	6	0.7%
Bulgaria	1	0.1%
Burma	2	0.2%
Chile	1	0.1%
China, Peoples Republic Of	581	64.7%
Cyprus	1	0.1%
Georgia	1	0.1%
Germany	1	0.1%
India	16	1.8%
Indonesia	19	2.1%
Iran	2	0.2%
Iraq	1	0.1%
Japan	26	2.9%
Kazakhstan	1	0.1%
Kuwait	6	0.7%
Kyrgyzstan	1	0.1%
Laos	2	0.2%
Libya	1	0.1%
Malaysia	4	0.4%
Malta	1	0.1%
Oman, Sultanate Of	1	0.1%
Pakistan	8	0.9%
Panama	7	0.8%
Qatar	9	1.0%
Russia	5	0.6%
Saudi Arabia	45	5.0%
Singapore, Republic of	1	0.1%
South Korea	36	4.0%
Taiwan, Republic of China	68	7.6%
Thailand	5	0.6%
Turkey	5	0.6%
United Arab Emirates	15	1.7%
United Kingdom	1	0.1%
Vietnam	10	1.1%
Unknown	7	0.8%
<b>Total</b>	<b>898</b>	<b>100.0%</b>

Enrollment by College and Major		
College	Major	Headcount
Agricultural Sciences	Crop Science	2
Business	Pre-Business	1
Engineering	Civil Engineering	1
Engineering	Computer Science	3
Engineering	Electrical and Computer Engineering	1
Engineering	Mechanical Engineering	2
Engineering	Pre-Computer Science	2
Liberal Arts	Liberal Studies	1
Science	General Science	24
Intensive English Program	Academic English	83
Intensive English Program	Academic English to Pathway	199
Intensive English Program	Study Abroad with English	6
Non-Credit	Undergraduate Pathway	342
Non-Credit	Graduate Pathway	222
University Exploratory Studies Program	Study Abroad with English Part 2	6
University Exploratory Studies Program	Visiting International Student Program	3
<b>Total</b>		<b>898</b>

## History of Student Enrollment

### Fall Term Headcount - 4th Week

Academic Year	Undergraduate	Graduate	First Professional	TOTAL	% CHANGE
1991-92	12,070	2,778	67	14,915	-6.9
1992-93	11,430	2,835	71	14,336	-3.9
1993-94	11,261	2,938	65	14,264	-0.5
1994-95	11,221	3,034	68	14,323	0.4
1995-96	11,280	2,805	76	14,161	-1.1
1996-97	11,019	2,677	88	13,784	-2.7
1997-98	11,382	2,656	89	14,127	2.5
1998-99	11,998	2,539	81	14,618	3.5
1999-00	13,167	2,773	151	16,091	10.1
2000-01	13,772	2,789	227	16,788	4.3
2001-02	14,877	2,868	289	18,034	7.4
2002-03	15,413	3,015	361	18,789	4.2
2003-04	15,599	2,988	392	18,979	1.0
2004-05	15,713	3,000	449	19,162	1.0
2005-06	15,747	2,976	513	19,236	0.4
2006-07	15,829	3,001	532	19,362	0.7
2007-08	16,228	2,994	531	19,753	2.0
2008-09	16,673	3,095	552	20,320	2.9
2009-10	18,067	3,328	574	21,969	8.1
2010-11	19,559	3,618	584	23,761	8.2
2011-12	20,621	3,776	580	24,977	5.1
2012-13	21,812	3,993	588	26,393	5.7
2013-14	23,161	4,179	585	27,925	5.8
2014-15	23,903	4,410	573	28,886	3.4
2015-16	24,612	4,385	579	29,576	2.4
2016-17	25,327	4,466	561	30,354	2.6
<b>2017-18</b>	<b>25,838</b>	<b>4,458</b>	<b>600</b>	<b>30,896</b>	<b>1.8</b>

## Highlights

- For Fall 2017, total enrollment was 30,896 students.
- When Fall 2016 and Fall 2017 are compared, the total enrollment increased by 542 students or 1.8% (from 30,354 to 30,896), the FTE increased by 1.1%, and the Student Credit Hours increased by 1.2%.
- The number of part-time students increased by 7.4% (from 7,911 to 8,494).
- When compared to Fall 2016, the undergraduate enrollment increased by 511 students, or 2.0% (from 25,327 to 25,838); the first professional enrollment increased by 7.0% (from 561 to 600).
- When compared to Fall 2016, Oregon residents decreased by 0.8%; non-resident increased by 5.5%; and international student enrollment increased by 0.8%.
- INTO OSU had a total enrollment of 898: 288 in Academic English program, 255 in INTO OSU Graduate Pathways, 6 in OSU-Student-Cap, 9 in Study Abroad, and 370 in Undergraduate Pathway program.
- University Honors College had an enrollment of 1,187.
- The College of Engineering had the largest student enrollment (8,932) when compared to the other academic units.
- OSU Extended Campus had 12,725 students, an increase of 13.1% compared to Fall 2016. These students took 70,003 credits, of which 29.4% were from the College of Liberal Arts, while 17.8% were from the College of Engineering.
- The percentage of U.S. minority students was 24.8% of the total enrollment. The number of minority students increased by 6.3% when compared to Fall 2016 (from 7,204 to 7,660).
- The most popular undergraduate majors for Fall 2017 were:
  - Computer Science
  - Business Administration
  - Mechanical Engineering
  - Biology
  - Kinesiology

Source: Fall Term 2017, 4th Week Student Data Extract File.

Comments about this publication are welcome.

Please contact the staff in the Office of Institutional Research, 500 Kerr Administration Building  
 InstitutionalResearch@oregonstate.edu