

## Enrollment Summary — Fall Term 2016

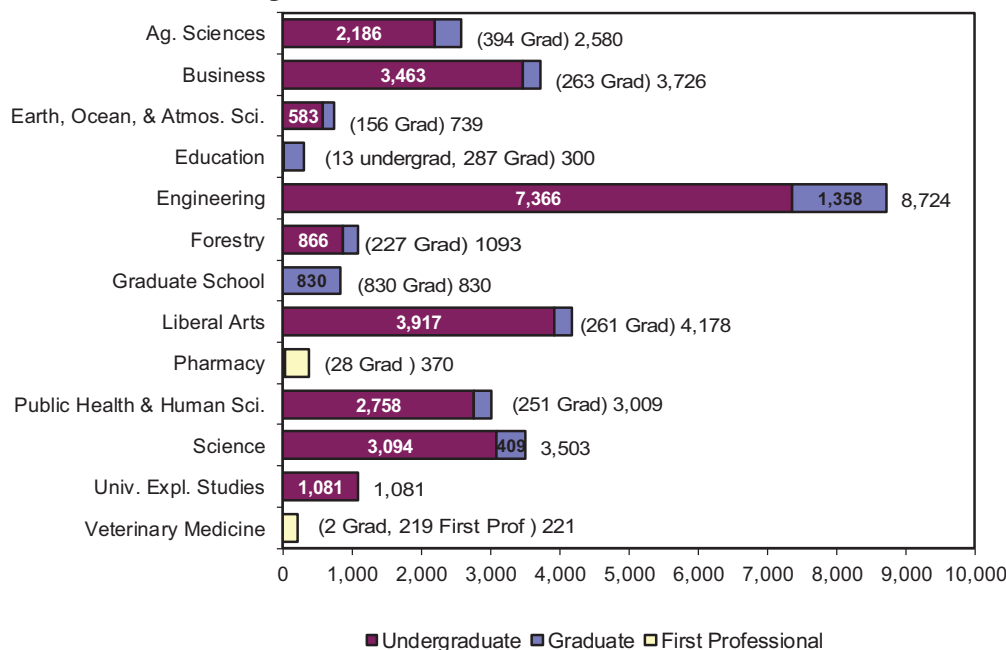
Office of Institutional Research • No. 28 • November 2016 • <http://oregonstate.edu/admin/aa/ir/enrollmentdemographic-reports>

### Enrollment at-a-Glance

	2015	2016	Change	% Change	*Students enrolled after the first day that withdrew by the fourth week are in the headcount but not in credit hours or FTE.
Total Enrollment (Headcount)	29,576	30,354	778	2.6%	
Total Student FTE *	25,275.3	25,833.8	558.5	2.2%	
Total Student Credit Hours*	357,974	365,917	7,943	2.2%	

	2015		2016		Change	
	Headcount	Percent	Headcount	Percent	Headcount	Percent
Women	13,768	46.6%	14,172	46.7%	404	2.9%
Men	15,808	53.4%	16,182	53.3%	374	2.4%
Full-Time	22,087	74.7%	22,443	73.9%	356	1.6%
Part-Time	7,489	25.3%	7,911	26.1%	422	5.6%
Undergraduate	24,612	83.2%	25,327	83.4%	715	2.9%
Graduate	4,385	14.8%	4,466	14.7%	81	1.8%
First Professional	579	2.0%	561	1.8%	-18	-3.1%
U.S. Minorities	6,754	22.8%	7,204	23.7%	450	6.7%
Oregon Residents Total	17,876	60.4%	17,964	59.2%	88	0.5%
Undergraduate	16,212	54.8%	16,272	53.6%	60	0.4%
Graduate	1,225	4.1%	1,271	4.2%	46	3.8%
First Professional	439	1.5%	421	1.4%	-18	-4.1%
Non-Residents Total	11,700	39.6%	12,390	40.8%	690	5.9%
Undergraduate	8,400	28.4%	9,055	29.8%	655	7.8%
Graduate	3,160	10.7%	3,195	10.5%	35	1.1%
First Professional	140	0.5%	140	0.5%	0	0.0%
International	3,328	11.3%	3,529	11.6%	201	6.0%
Veteran Total	965	3.3%	956	3.1%	-9	-0.9%
Undergraduate	866		870		4	0.5%
% of Undergraduate	3.5%		3.4%			
Graduate/First Professional	99		86		-13	-13.1%
% of Graduate/First Professional	2.0%		1.7%			
First Generation College (Undergraduate)	5,803		5,858		55	0.9%
% of Undergraduate	23.6%		23.1%			

### Enrollment by Academic Unit\* and Student Level



### Index

	Page
Academic Unit .....	1-2, 4-7,
.....	10-11, 14-16
Admissions .....	2
Age .....	8
Class Standing .....	4, 8, 14-16
Extended Campus .....	14-15
First Generation College .....	1
Freshman GPA, SAT, ACT .....	2
Full Time, Part Time .....	1, 9
Gender .....	1-2, 4, 8-11, 16
Geographic Origin .....	12
Highlights .....	20
History of Enrollment.....	20
Honors College .....	16
International .....	1, 13
INTO-OSU .....	19
Major.....	5-7
New Students .....	2-3
OSU-Cascades Campus.....	17-18
Residency .....	1, 9, 14, 16
Undergrad/Grad/First Prof....	1-10, 13
U.S Minorities .....	10-11
Veteran .....	1

\*Unduplicated headcount based upon student's primary college.

## Applications and Admissions Summary

	# of Applications	# of Admitted	Ratio of Admitted to Applications	# of Enrolled*	Ratio of Enrolled to Admitted
First-Time Freshmen	14,616	11,485	78.6%	3,856	33.6%
Undergraduate Transfers	3,663	2,269	61.9%	1,386	61.1%
Post-Bac / Non-Degree Undergraduates	1,970	1,395	70.8%	1,059	75.9%
Graduate	6,958	2,239	32.2%	1,338	59.8%
First Professional**		144		135	93.8%
<b>Total</b>	<b>27,207</b>	<b>17,532</b>		<b>7,774</b>	<b>44.3%</b>

\*Fall Term 2016, 4th week Banner Student Data Extract File.

Source: OSU Admission and Orientation Office, SAR3100 on Oct. 17, 2016.

\*\*No complete application data for First Professional students in Banner.

## Freshman Entrance GPA, SAT, and ACT Scores

### Mean High School GPA

Gender	2011	2012	2013	2014	2015	2016
Male	3.49	3.53	3.53	3.55	3.54	<b>3.58</b>
Female	3.57	3.60	3.61	3.63	3.63	<b>3.69</b>
Both	3.53	3.56	3.57	3.59	3.58	<b>3.63</b>

### Mean SAT Verbal Score

Gender	2011	2012	2013	2014	2015	2016
Male	534	547	546	553	555	<b>561</b>
Female	522	534	536	540	541	<b>546</b>
Both	528	541	541	547	548	<b>553</b>

### Mean SAT Math Score

Gender	2011	2012	2013	2014	2015	2016
Male	570	582	582	588	580	<b>586</b>
Female	527	537	534	540	534	<b>534</b>
Both	549	560	558	564	557	<b>560</b>

### Mean SAT Writing Score

Gender	2011	2012	2013	2014	2015	2016
Male	505	518	523	529	523	<b>528</b>
Female	518	525	527	532	531	<b>534</b>
Both	512	521	525	530	527	<b>531</b>

### Mean SAT Composite Score\*

Gender	2011	2012	2013	2014	2015	2016
Male	1,601	1,638	1,641	1,660	1,650	<b>1,666</b>
Female	1,559	1,587	1,586	1,601	1,597	<b>1,605</b>
Both	1,580	1,614	1,614	1,631	1,624	<b>1,635</b>

\*Includes SAT Writing Score.

### Mean ACT English Score

Gender	2011	2012	2013	2014	2015	2016
Male	22.7	23.4	23.4	23.7	23.8	<b>24.3</b>
Female	22.7	23.7	23.7	24.0	23.9	<b>24.4</b>
Both	22.7	23.5	23.6	23.8	23.9	<b>24.3</b>

### Mean ACT Math Score

Gender	2011	2012	2013	2014	2015	2016
Male	25.1	25.5	25.4	25.6	25.6	<b>25.9</b>
Female	22.6	23.5	23.4	23.8	23.2	<b>23.3</b>
Both	23.9	24.5	24.4	24.7	24.4	<b>24.6</b>

### Mean ACT Composite Score

Gender	2011	2012	2013	2014	2015	2016
Male	24.1	24.7	24.6	24.8	25.1	<b>25.4</b>
Female	22.9	23.9	23.9	24.2	24.0	<b>24.2</b>
Both	23.5	24.3	24.2	24.5	24.6	<b>24.8</b>

## New Students by Academic Unit

	New Students	Percent for Unit
Agricultural Sciences	544	21.1
Business	930	25.0
Earth, Ocean, and Atmospheric Sciences	195	26.4
Education	49	16.3
Engineering	2,246	25.7
Forestry	204	18.7
Graduate School	462	55.7
Liberal Arts	869	20.8
Pharmacy	83	22.4
Public Health and Human Sciences	581	19.3
Science	1,070	30.5
University Exploratory Studies	486	45.0
Veterinary Medicine	55	24.9
<b>Total</b>	<b>7,774</b>	<b>25.6</b>

## New Students— Where They Came From

New Undergraduate Students from High School				
	2015	2016	Change	
			Headcount	Percent
Oregon High Schools	2,752	2,736	-16	-0.6%
U.S. High Schools	819	1,040	221	27.0%
International High Schools	44	44	0	0.0%
Unknown	22	36	14	63.6%
<b>Total</b>	<b>3,637</b>	<b>3,856</b>	<b>219</b>	<b>6.0%</b>
New Undergraduate Transfer Students				
Oregon Community Colleges	764	698	-66	-8.6%
OUS Institutions	111	90	-21	-18.9%
Oregon Private Institutions	30	17	-13	-43.3%
Out-of-State Institutions	509	546	37	7.3%
Foreign Country Institutions	16	10	-6	-37.5%
Unknown	21	25	4	19.0%
<b>Total</b>	<b>1,451</b>	<b>1,386</b>	<b>-65</b>	<b>-4.5%</b>
New Graduate and First Professional				
Masters	489	507	18	3.7%
Doctoral	225	272	47	20.9%
PharmD (Doctor of Pharmacy)	91	80	-11	-12.1%
Vet Med (Doctor of Veterinary Medicine)	55	55	0	0.0%
<b>Total</b>	<b>860</b>	<b>914</b>	<b>54</b>	<b>6.3%</b>
New Non-Degree and Post Baccalaureate Students				
<b>Total</b>	<b>1,499</b>	<b>1,618</b>	<b>119</b>	<b>7.9%</b>
<b>Total New Students</b>	<b>7,447</b>	<b>7,774</b>	<b>327</b>	<b>4.4%</b>
Re-Admit Students	317	326	9	2.8%
Continuing Students	21,812	22,254	442	2.0%
<b>Grand Total</b>	<b>29,576</b>	<b>30,354</b>	<b>778</b>	<b>2.6%</b>

New Undergraduate Students from High School			
Top Ten Oregon High Schools by Enrollment (Last Year's Rank)			
1. Sunset High School (1)	77	6. Tigard Senior High School (3)	57
2. Southridge High School (6)	70	7. Beaverton High School (14)	56
3. Westview High School (2)	68	8. Clackamas High School (9)	56
4. Tualatin High School (4)	62	9. Corvallis High School (11)	56
5. West Linn High School (9)	60	10. Crescent Valley High School (12)	48
Top Ten States by Enrollment (Last Year's Rank)			
1. California (1)	523	6. Idaho (6)	25
2. Washington (2)	178	7. Arizona (12)	19
3. Hawaii (3)	81	8. Alaska (7)	17
4. Texas (5)	27	9. Nevada (10)	12
5. Colorado (4)	25	10. Minnesota (13)	11

New Undergraduate Transfers from Oregon Community Colleges		
	2015	2016
Blue Mountain Com College	19	17
Central Oregon Com College	39	36
Chemeketa Community College	163	151
Clackamas Community College	48	58
Clatsop Community College	11	10
Columbia Gorge CC	9	7
Klamath Community College	10	2
Lane Community College	50	57
Linn-Benton Community College	159	117
Mt Hood Community College	37	28
Portland Com College-Main	128	124
Rogue Community College	24	17
Southwestern Ore Comm College	20	22
Tillamook Bay Comm College	3	1
Treasure Valley Com College	13	9
Umpqua Community College	31	42
<b>Total</b>	<b>764</b>	<b>698</b>

New Undergraduate Transfers from OUS Institutions		
	2015	2016
Eastern Oregon University	11	9
Oregon Inst of Technology	8	6
Portland State University	39	26
Southern Oregon University	10	12
University of Oregon	31	21
Western Oregon University	12	16
<b>Total</b>	<b>111</b>	<b>90</b>

New Undergraduate Transfers from Oregon Private Institutions		
	2015	2016
Concordia University	6	5
Corban University	2	2
George Fox University	7	1
Lewis & Clark College	0	1
Linfield College	2	3
Northwest Christian University	2	1
Pacific NW College of Art	1	0
Pacific University	5	3
Reed College	1	0
University of Portland	0	1
Warner Pacific College	2	0
Willamette University	2	0
<b>Total</b>	<b>30</b>	<b>17</b>

New Students from Oregon Counties				
	2015	2016	2015	2016
Baker	10	16	Lake	11
Benton	328	297	Lane	316
Clackamas	592	575	Lincoln	39
Clatsop	27	34	Linn	181
Columbia	45	35	Malheur	23
Coos	45	43	Marion	355
Crook	11	17	Morrow	12
Curry	14	9	Multnomah	579
Deschutes	158	165	Polk	128
Douglas	102	97	Sherman	3
Gilliam	0	0	Tillamook	16
Grant	6	4	Umatilla	64
Harney	7	6	Union	24
Hood River	30	26	Wallowa	11
Jackson	136	131	Wasco	16
Jefferson	19	14	Washington	866
Josephine	61	48	Wheeler	0
Klamath	44	22	Yamhill	120

## Student Enrollment By Academic Unit and Student Class Standing

Academic Unit	Fresh-man	Sopho-more	Junior	Senior	Post Bac	Non-Degree Under-grad	Under-grad Total	Master	Doctor-ate	Non-Degree Grad	Grad Total	First Profes-sional	TOTAL
AG	281	340	542	831	165	27	2,186	159	187	48	394	-	2,580
BUS	782	726	883	879	32	161	3,463	209	16	38	263	-	3,726
EOAS	93	91	146	222	27	4	583	53	74	29	156	-	739
ED	-	-	-	-	13	-	13	143	144	-	287	-	300
ENGR	1,257	1,213	1,417	1,974	1,332	173	7,366	698	550	110	1,358	-	8,724
FOR	76	122	221	381	50	16	866	127	68	32	227	-	1,093
LA	554	683	1,062	1,376	133	109	3,917	201	60	-	261	-	4,178
PHARM	-	-	-	-	-	-	-	-	28	-	28	342	370
PHHS	424	501	777	1,000	51	5	2,758	140	93	18	251	-	3,009
SCI	728	628	678	852	47	161	3,094	66	339	4	409	-	3,503
VM	-	-	-	-	-	-	-	2	-	-	2	219	221
GRAD	-	-	-	-	-	-	-	113	77	640	830	-	830
UESP	449	238	57	16	-	321	1,081	-	-	-	-	-	1,081
<b>Total 2016</b>	<b>4,644</b>	<b>4,542</b>	<b>5,783</b>	<b>7,531</b>	<b>1,850</b>	<b>977</b>	<b>25,327</b>	<b>1,911</b>	<b>1,636</b>	<b>919</b>	<b>4,466</b>	<b>561</b>	<b>30,354</b>
<b>Total 2015</b>	<b>4,481</b>	<b>4,865</b>	<b>5,506</b>	<b>7,121</b>	<b>1,683</b>	<b>956</b>	<b>24,612</b>	<b>1,916</b>	<b>1,555</b>	<b>914</b>	<b>4,385</b>	<b>579</b>	<b>29,576</b>

## By Academic Unit, Gender, and Student Level

Academic Unit	Undergraduate				Graduate				First Professional				Total	%
	Men	Women	Total	% of Univ.	Men	Women	Total	% of Univ.	Men	Women	Total	% of Univ.		
AG	854	1,332	2,186	7.2%	184	210	394	1.3%	-	-	-	-	2,580	8.5%
BUS	1,927	1,536	3,463	11.4%	145	118	263	0.9%	-	-	-	-	3,726	12.3%
EOAS	276	307	583	1.9%	76	80	156	0.5%	-	-	-	-	739	2.4%
ED	3	10	13	0.0%	76	211	287	0.9%	-	-	-	-	300	1.0%
ENGR	5,945	1,421	7,366	24.3%	1,048	310	1,358	4.5%	-	-	-	-	8,724	28.7%
FOR	532	334	866	2.9%	124	103	227	0.7%	-	-	-	-	1,093	3.6%
LA	1,575	2,342	3,917	12.9%	81	180	261	0.9%	-	-	-	-	4,178	13.8%
PHARM	-	-	-	0.0%	17	11	28	0.1%	150	192	342	1.1%	370	1.2%
PHHS	689	2,069	2,758	9.1%	65	186	251	0.8%	-	-	-	-	3,009	9.9%
SCI	1,301	1,793	3,094	10.2%	247	162	409	1.3%	-	-	-	-	3,503	11.5%
VM	-	-	-	0.0%	-	2	2	0.0%	34	185	219	0.7%	221	0.7%
GRAD	-	-	-	0.0%	313	517	830	2.7%	-	-	-	-	830	2.7%
UESP	520	561	1,081	3.6%	-	-	-	0.0%	-	-	-	-	1,081	3.6%
<b>Total 2016</b>	<b>13,622</b>	<b>11,705</b>	<b>25,327</b>	<b>83.4%</b>	<b>2,376</b>	<b>2,090</b>	<b>4,466</b>	<b>14.7%</b>	<b>184</b>	<b>377</b>	<b>561</b>	<b>1.8%</b>	<b>30,354</b>	<b>100.0%</b>
<b>Total 2015</b>	<b>13,240</b>	<b>11,372</b>	<b>24,612</b>	<b>83.2%</b>	<b>2,377</b>	<b>2,008</b>	<b>4,385</b>	<b>14.8%</b>	<b>191</b>	<b>388</b>	<b>579</b>	<b>2.0%</b>	<b>29,576</b>	<b>100.0%</b>

## Enrollment by Major

This section counts each major for students with multiple or double degree majors; headcounts are duplicated across college and university totals.

ACADEMIC UNIT	UNDER-GRAD	GRAD	TOTAL	ACADEMIC UNIT	UNDER-GRAD	GRAD	TOTAL
<b><u>College of Agricultural Sciences</u></b>				<b><u>College of Business (Cont.)</u></b>			
Agricultural Business Management	126	-	126	Design and Human Environment	-	8	8
Agricultural Education	-	11	11	Finance	319	-	319
Agricultural Sciences	342	-	342	Pre-Finance	93	-	93
Animal Science	-	21	21	Graphic Design	12	-	12
Animal Sciences	389	-	389	Pre-Graphic Design	10	-	10
Applied Economics	-	28	28	Hospitality Management	1	-	1
Bioresource Research	73	-	73	Innovation Management	39	-	39
Botany	52	-	52	Interior Design	71	-	71
Botany and Plant Pathology	-	40	40	Pre-Interiors	63	-	63
Crop and Soil Science	57	1	58	International Studies	7	-	7
Crop Science	-	22	22	Management	234	-	234
Environmental Economics and Policy	54	-	54	Pre-Management	48	-	48
Fisheries and Wildlife Administration	-	6	6	Marketing	229	-	229
Fisheries and Wildlife Sciences	667	-	667	Pre-Marketing	128	-	128
Fisheries Management	-	26	26	Merchandising Management	195	-	195
Fisheries Science	-	41	41	Pre-Merchandising Management	100	-	100
Food Science and Technology	175	38	213	Sustainability	14	-	14
Horticulture	228	38	266	Non-Degree Business	43	-	43
International Studies	2	-	2	<b>TOTAL</b>	<b>3,898</b>	<b>272</b>	<b>4,170</b>
Rangeland Ecology and Management	-	6	6	<b><u>College of Earth, Ocean, and Atmospheric Sciences</u></b>			
Rangeland Sciences	23	-	23	Earth Sciences	162	2	164
Soil Science	-	30	30	Environmental Sciences	423	-	423
Sustainability	30	-	30	Geographic Information Science	-	38	38
Toxicology	-	21	21	Geography	1	22	23
Wildlife Management	-	37	37	Geology	1	32	33
Wildlife Science	-	47	47	International Studies	1	-	1
Non-Degree Agricultural Sciences	23	-	23	Marine Resource Management	-	20	20
<b>TOTAL</b>	<b>2,241</b>	<b>413</b>	<b>2,654</b>	Ocean, Earth and Atmospheric Sciences	-	53	53
<b><u>College of Business</u></b>				Oceanography	-	3	3
Accountancy	215	-	215	Sustainability	6	-	6
Pre-Accountancy	94	-	94	Water Conflict Management and Transformation	-	27	27
Apparel Design	49	-	49	Non-Degree Earth, Ocean, Atmospheric Science	4	-	4
Pre-Apparel	10	-	10	<b>TOTAL</b>	<b>598</b>	<b>197</b>	<b>795</b>
Business Administration <sup>1</sup>	180	215	395	<b><u>College of Education</u></b>			
Pre-Business	1,549	-	1,549	Adult and Higher Education	-	36	36
Pre-MBA <sup>2</sup>	2	35	37	Counseling	-	108	108
Business Administration and Accountancy	-	10	10	Education	77	100	177
Business Analytics	-	4	4	Pre-Education	375	-	375
Business Information Systems	152	-	152	Mathematics Education	-	7	7
Pre-Business Information Systems	41	-	41	Science Education	-	21	21
				Teaching	-	19	19
				<b>TOTAL</b>	<b>452</b>	<b>291</b>	<b>743</b>

ACADEMIC UNIT	UNDER-GRAD	GRAD	TOTAL	ACADEMIC UNIT	UNDER-GRAD	GRAD	TOTAL
<b><u>College of Engineering</u></b>				<b><u>College of Forestry (Cont.)</u></b>			
Bioengineering	104	1	105	Pre-Forestry	80	-	80
Pre-Bioengineering	202	-	202	Forests and Climate Change	-	1	1
Biological and Ecological Engineering	-	10	10	International Studies	3	-	3
Chemical Engineering	306	87	393	Natural Resources	531	50	581
Pre-Chemical Engineering	302	-	302	Recreation Resource Management	34	-	34
Civil Engineering	224	178	402	Renewable Materials	49	-	49
Pre-Civil Engineering	355	-	355	Sustainability	9	-	9
Computer Science	892	281	1,173	Sustainable Forest Management	-	47	47
Pre-Computer Science	1,494	-	1,494	Sustainable Natural Resources	-	25	25
Construction Engineering Management <sup>1</sup>	183	3	186	Tourism and Outdoor Leadership	12	-	12
Pre-Construction Engineering Management	215	-	215	Urban Forestry	-	20	20
Ecological Engineering	47	-	47	Wood Science	-	33	33
Pre-Ecological Engineering	60	-	60	Non-Degree Forestry	15	-	15
Electrical and Computer Engineering	319	255	574	<b>TOTAL</b>	<b>882</b>	<b>248</b>	<b>1,130</b>
Pre-Electrical and Computer Engineering	418	-	418	<b><u>Graduate School</u></b>			
Energy Systems Engineering	11	-	11	College and University Teaching <sup>2</sup>	1	68	69
Pre-Energy Systems Engineering	21	-	21	Comparative Health Sciences	-	23	23
Environmental Engineering	39	50	89	Environmental Sciences	-	32	32
Pre-Environmental Engineering	78	-	78	Interdisciplinary Studies	-	45	45
Pre-General Engineering	232	-	232	Molecular and Cellular Biology	-	32	32
Industrial Engineering	128	111	239	Pre-Comparative Health Sciences	-	1	1
Pre-Industrial Engineering	87	-	87	Water Resources Engineering	-	25	25
International Studies	19	-	19	Water Resources Policy and Management	-	17	17
Manufacturing Engineering	46	-	46	Water Resources Science	-	20	20
Pre-Manufacturing Engineering	20	-	20	Non-Degree Graduate Student	-	636	636
Materials Science	-	44	44	<b>TOTAL</b>	<b>1</b>	<b>899</b>	<b>900</b>
Mechanical Engineering	572	186	758	<b><u>College of Liberal Arts</u></b>			
Pre-Mechanical Engineering	844	-	844	American Studies	2	-	2
Medical Physics	-	2	2	Anthropology	258	-	258
Nuclear Engineering	74	58	132	Applied Anthropology	-	56	56
Pre-Nuclear Engineering	106	-	106	Applied Ethics	-	11	11
Radiation Health Physics	13	67	80	Applied Visual Arts	72	-	72
Pre-Radiation Health Physics	15	-	15	Art	37	-	37
Robotics	-	43	43	College Student Services Administration	-	36	36
Sustainability	7	-	7	Creative Writing	-	28	28
Non-Degree Pre-Engineering	47	1	48	Digital Communication Arts	380	-	380
<b>TOTAL</b>	<b>7,480</b>	<b>1,377</b>	<b>8,857</b>	Economics	386	-	386
<b><u>College of Forestry</u></b>				English	191	26	217
Forest Ecosystems and Society	-	67	67	Environmental Arts and Humanities	-	6	6
Forest Engineering	38	-	38	Ethnic Studies	11	-	11
Pre-Forest/Civil Engineering	17	-	17	French	17	-	17
Pre-Forest Engineering	30	-	30	German	62	-	62
Forest Management	12	-	12	Graphic Design	90	-	90
Forest Resources	-	2	2	History	199	-	199
Forest Science	-	3	3	History of Science	-	13	13
Forestry	52	-	52	International Studies	19	-	19
				Language in Culture	1	-	1
				Liberal Studies	223	-	223



ACADEMIC UNIT	UNDER-		TOTAL
	GRAD	GRAD	
<b><u>College of Liberal Arts (Cont.)</u></b>			
Music	135	-	135
Philosophy	40	-	40
Political Science	291	-	291
Pre-Graphic Design	60	-	60
Psychology	813	3	816
Public Policy	-	59	59
Religious Studies	10	-	10
Social Science	11	-	11
Sociology	357	-	357
Spanish	92	-	92
Speech Communication	125	-	125
Pre-Communication	82	-	82
Sustainability	19	-	19
Women, Gender, and Sexuality Studies	57	25	82
Non-Degree Liberal Arts	91	-	91
<b>TOTAL</b>	<b>4,131</b>	<b>263</b>	<b>4,394</b>

ACADEMIC UNIT	UNDER-		FIRST	TOTAL
	GRAD	GRAD	PROF	
<b><u>College of Pharmacy</u></b>				
Pharmaceutical Sciences	-	29	-	29
Pharmacy, Doctor of Pharmacy (4-year)	-	-	342	342
<b>TOTAL</b>	<b>-</b>	<b>29</b>	<b>342</b>	<b>371</b>

ACADEMIC UNIT	UNDER-		FIRST	TOTAL
	GRAD	GRAD	PROF	
<b><u>College of Public Health and Human Sciences</u></b>				
Athletic Training	17	9	-	26
Human Development and Family Sciences	986	-	-	986
Human Development and Family Studies	-	33	-	33
International Studies	6	-	-	6
Kinesiology	1,050	33	-	1,083
Nutrition	238	11	-	249
Public Health <sup>1</sup>	341	179	-	520
Pre-Public Health	185	-	-	185
Sustainability	2	-	-	2
Non-Degree Public Health and Human Sciences	3	-	-	3
<b>TOTAL</b>	<b>2828</b>	<b>265</b>	<b>-</b>	<b>3,093</b>

ACADEMIC UNIT	UNDER-		FIRST	TOTAL
	GRAD	GRAD	PROF	
<b><u>College of Science</u></b>				
Biochemistry and Biophysics	193	29	-	222
BioHealth Sciences	668	-	-	668
Biology <sup>1</sup>	988	1	-	989
Chemistry	256	122	-	378
Data Analytics	-	4	-	4
General Science	65	-	-	65
International Studies	7	-	-	7
Management for Science Professionals	-	1	-	1
Mathematics	229	69	-	298
Microbiology	266	31	-	297
Physics	144	44	-	188
Statistics	-	56	-	56
Sustainability	2	-	-	2
Zoology	225	63	-	288
Non-Degree Science	131	-	-	131
<b>TOTAL</b>	<b>3,174</b>	<b>420</b>	<b>-</b>	<b>3,594</b>

ACADEMIC UNIT	UNDER-		FIRST	TOTAL
	GRAD	GRAD	PROF	
<b><u>College of Veterinary Medicine</u></b>				
Veterinary Medicine - DVM	-	-	219	219
Veterinary Science	-	2	-	2
<b>TOTAL</b>	<b>-</b>	<b>2</b>	<b>219</b>	<b>221</b>

<b><u>University Exploratory Studies</u></b>				
	1,081	-	-	1,081

<b><u>University Honors College</u></b>				
Honors Scholar and Honors Associate <sup>3</sup>	1,057	-	-	1,057
<b>TOTAL</b>	<b>1,057</b>	<b>-</b>	<b>-</b>	<b>1,057</b>

	UNDER-GRAD	GRAD	FIRST-PROF	TOTAL
<b>TOTAL UNIVERSITY</b>	<b>26,766</b>	<b>4,676</b>	<b>561</b>	<b>32,003</b>

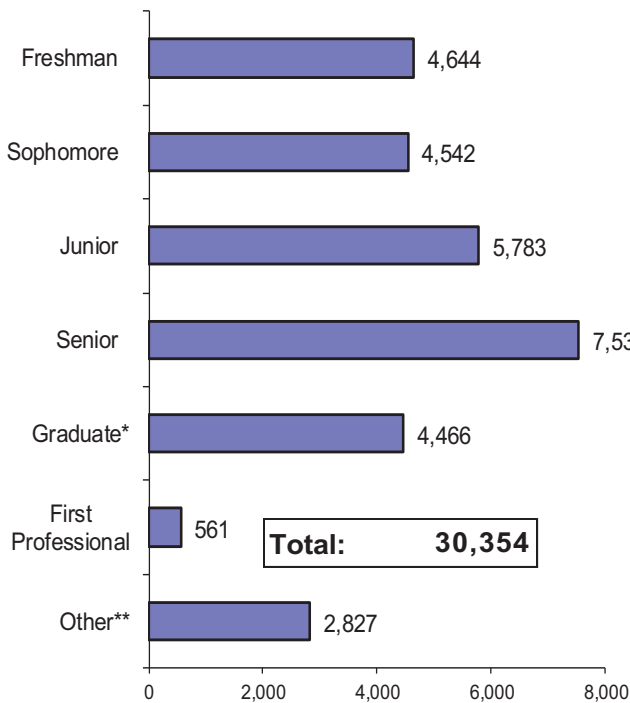
<sup>1</sup> Includes graduate/first professional students also pursuing an undergraduate degree.

<sup>2</sup> Includes undergraduate post baccalaureate students also pursuing a graduate program/certificate.

<sup>3</sup> Honors Scholars and Honors Associates do not add to the University total because they have already been counted in their major.

<b>Degree Programs with the Highest Enrollment (Last Year's Rank)</b>	
<b>Undergraduate</b>	
1. Computer Science* (1)	2,386
2. Business Administration* (2)	1,731
3. Mechanical Engineering* (3)	1,416
4. Kinesiology (4)	1,050
5. Biology (6)	988
6. Human Development and Family Sciences (5)	986
7. Psychology (7)	813
8. Electrical and Computer Engineering* (8)	737
9. BioHealth Sciences (11)	668
*Includes Pre-Professional	
<b>Graduate / First Professional</b>	
1. Pharmacy, Doctor of Pharmacy (4-year) (1)	342
2. Computer Science (4)	281
3. Electrical and Computer Engineering (3)	255
4. Business Administration (2)	250
5. Veterinary Medicine - DVM (5)	219
6. Mechanical Engineering (7)	186
7. Civil Engineering (6)	178
8. Public Health (8)	176
9. Chemistry (9)	122
10. Industrial Engineering (13)	111
*Includes Pre-MBA	

## Headcount Enrollment by Class Standing



\*Includes Non-Degree Graduate Students.

\*\*Includes Non-Degree Undergraduate and Post-Baccalaureate Students.

## Student Enrollment, Credit Hours, and FTE by Class Standing

Class Standing	Student Enrollment	Student Credit Hours	Student FTE
Freshman	4,644	61,968	4,131.2
Sophomore	4,542	59,754	3,983.6
Junior	5,783	74,594	4,972.9
Senior	7,531	93,552	6,236.8
Post Baccalaureate	1,850	13,131	875.4
Non-Degree Undergrad	977	8,923	594.9
<b>Total for Undergraduate</b>	<b>25,327</b>	<b>311,922</b>	<b>20,794.8</b>
Masters	1,911	19,370	1,614.2
Doctoral	1,636	19,418	2,157.6
Non-Degree Graduate	919	5,301	441.7
<b>Total for Graduate</b>	<b>4,466</b>	<b>44,089</b>	<b>4,213.5</b>
Doctor of Pharmacy	342	5,860	488.3
Veterinary Medicine	219	4,046	337.2
<b>Total for First Professional</b>	<b>561</b>	<b>9,906</b>	<b>825.5</b>
<b>GRAND TOTAL</b>	<b>30,354</b>	<b>365,917</b>	<b>25,833.8</b>

## Age of Students

	Undergraduate		Graduate		First Professional	
<b>Under 25 Years</b>						
Men	10,671	42.1%	559	12.5%	78	13.9%
<b>25 Years or Older</b>						
Men	2,951	11.7%	1,817	40.7%	106	18.9%
<b>Under 25 Years</b>						
Women	9,281	36.6%	511	11.4%	167	29.8%
<b>25 Years or Older</b>						
Women	2,424	9.6%	1,579	35.4%	210	37.4%
<b>Total</b>	<b>25,327</b>	<b>100%</b>	<b>4,466</b>	<b>100%</b>	<b>561</b>	<b>100%</b>

Youngest: 12 years • Oldest: 77 years

## Corvallis Campus\* Undergraduate Oregon Residents

Degree Seeking only	2006	2012	2013	2014	2015	2016
Oregon Residents	13,112	14,433	14,491	14,412	14,518	14,464
% Oregon Residents	89.2%	77.2%	75.2%	74.8%	75.1%	74.2%
<b>All Undergraduates</b>						
Oregon Residents	13,184	14,459	14,531	14,449	14,546	14,489
% Oregon Residents	88.6%	76.0%	73.8%	73.0%	73.3%	72.2%

\*Students with at least one course at Corvallis Campus

## New High Achieving\* Oregon High School Graduates

	2015	2016	Change	
			Number	Percent
New Oregon HS Grads	2,747	2,726	-21	-0.8%
High Achievers	1,149	1,281	132	11.5%
% High Achievers	41.8%	47.0%		

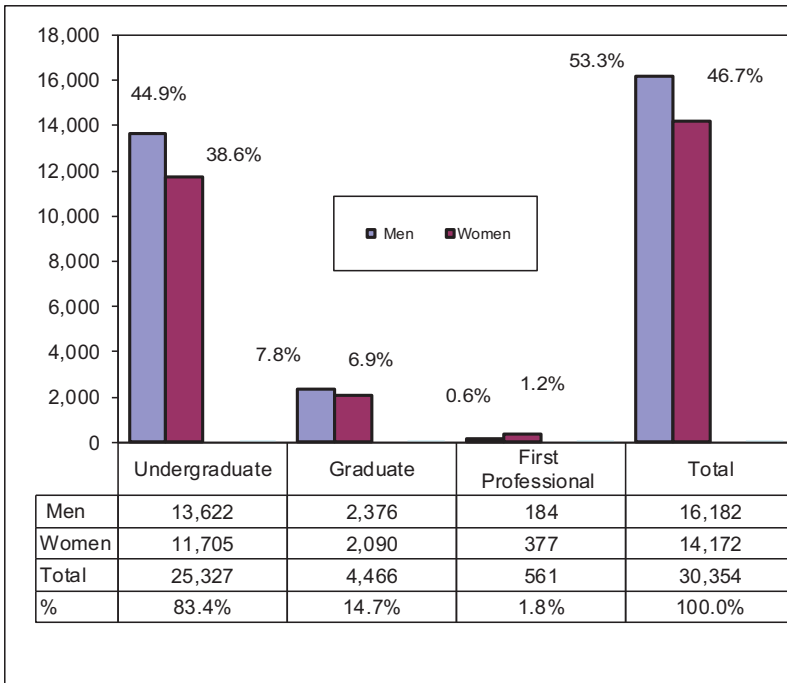
## New High Achieving\* Oregon High School Graduate by College

	2015			2016		
	High Achievers	Oregon HS Grads	% High Achievers	High Achievers	Oregon HS Grads	% High Achievers
Agricultural Sciences	50	125	40.0%	67	127	52.8%
Business	96	371	25.9%	126	391	32.2%
Earth, Ocean, and Atmos_Sci	9	21	42.9%	17	43	39.5%
Engineering	437	897	48.7%	473	854	55.4%
Forestry	17	36	47.2%	12	36	33.3%
Liberal Arts	78	240	32.5%	99	282	35.1%
Public Health and Human Sci	80	233	34.3%	100	228	43.9%
Science	292	575	50.8%	303	535	56.6%
Univ. Explor. Studies	90	249	36.1%	84	230	36.5%

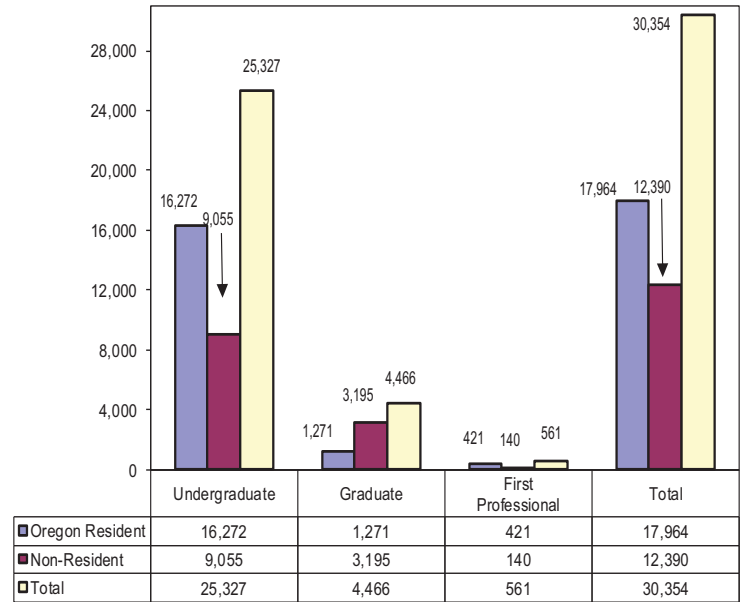
\*Students with Weighted High School GPA of 3.75 or higher.



## Enrollment by Gender and Student Level

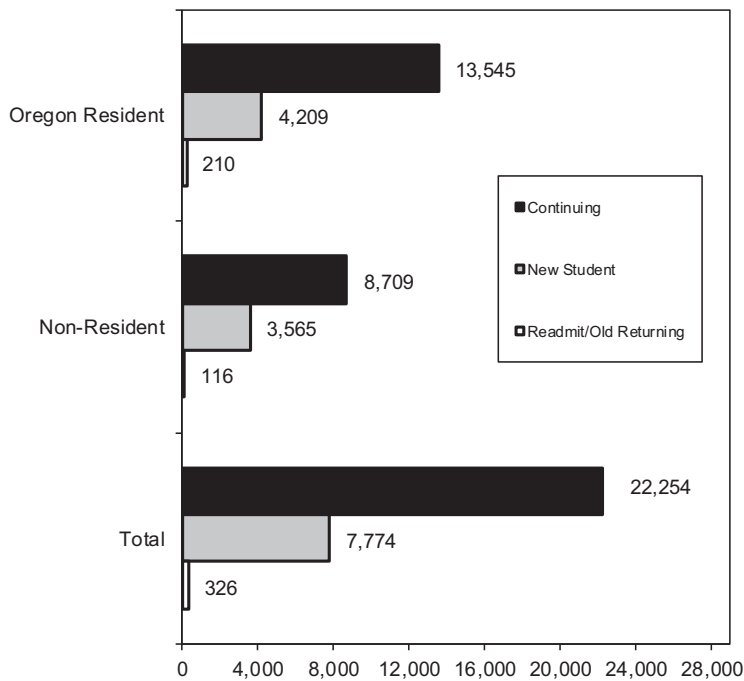


## By Residency\* and Student Level

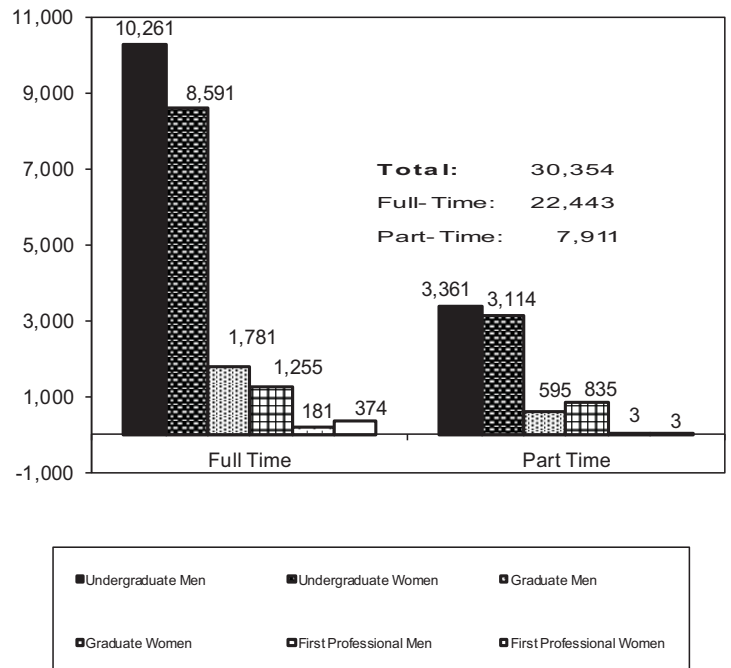


\* Residency is based upon tuition and fee status.

## All Students by Residency\* and Status



## Student Enrollment Full Time and Part Time, by Gender



\* Residency is based upon tuition and fee status.

## Minority Enrollment

### Enrollment by Academic Unit, Ethnicity, and Student Level

Academic Unit	American Indian/ Alaskan Native				Asian				Black				Hispanic				Native Hawaiian/ Pacific Islander			
	Under-Grad	Grad	First Prof.	Total	Under-Grad	Grad	First Prof.	Total	Under-Grad	Grad	First Prof.	Total	Under-Grad	Grad	First Prof.	Total	Under-Grad	Grad	First Prof.	Total
Ag. Sciences	18	3	-	21	47	7	-	54	20	3	-	23	194	29	-	223	1	-	-	1
Business	14	-	-	14	182	13	-	195	37	3	-	40	276	9	-	285	11	-	-	11
Earth, Ocean, and Atmos_Sci	7	-	-	7	17	3	-	20	5	-	-	5	44	8	-	52	2	-	-	2
Education	-	3	-	3	-	13	-	13	-	14	-	14	1	24	-	25	-	1	-	1
Engineering	23	1	-	24	744	48	-	792	89	8	-	97	537	32	-	569	15	1	-	16
Forestry	4	2	-	6	6	5	-	11	4	-	-	4	46	11	-	57	-	-	-	-
Graduate School	-	2	-	2	-	37	-	37	-	23	-	23	-	50	-	50	-	3	-	3
Liberal Arts	26	3	-	29	161	10	-	171	82	5	-	87	400	28	-	428	24	1	-	25
Pharmacy	-	-	0	-	-	2	132	134	-	-	6	6	-	1	19	20	-	-	1	1
Public Health and Human Sci	25	3	-	28	195	16	-	211	42	4	-	46	332	33	-	365	7	-	-	7
Science	10	1	-	11	444	23	-	467	40	3	-	43	313	19	-	332	4	-	-	4
Univ. Explor. Studies	8	-	-	8	52	-	-	52	30	-	-	30	114	-	-	114	11	-	-	11
Vet. Medicine	-	-	1	1	-	-	11	11	-	-	-	-	-	-	16	16	-	-	-	-
<b>Total</b>	<b>135</b>	<b>18</b>	<b>1</b>	<b>154</b>	<b>1,848</b>	<b>177</b>	<b>143</b>	<b>2,168</b>	<b>349</b>	<b>63</b>	<b>6</b>	<b>418</b>	<b>2,257</b>	<b>244</b>	<b>35</b>	<b>2,536</b>	<b>75</b>	<b>6</b>	<b>1</b>	<b>82</b>

Academic Unit	Two or More Races				White				International*				Declined/Missing				TOTAL			
	Under-Grad	Grad	First Prof.	Total	Under-Grad	Grad	First Prof.	Total	Under-Grad	Grad	First Prof.	Total	Under-Grad	Grad	First Prof.	Total	Under-Grad	Grad	First Prof.	Total
Ag. Sciences	147	9	-	156	1,640	252	-	1,892	51	76	-	127	68	15	-	83	2,186	394	-	2,580
Business	210	2	-	212	2,030	98	-	2,128	664	132	-	796	39	6	-	45	3,463	263	-	3,726
Earth, Ocean, and Atmos_Sci	42	3	-	45	437	115	-	552	14	17	-	31	15	10	-	25	583	156	-	739
Education	-	14	-	14	12	196	-	208	-	4	-	4	-	18	-	18	13	287	-	300
Engineering	466	24	-	490	4,385	400	-	4,785	907	808	-	1,715	200	36	-	236	7,366	1,358	-	8,724
Forestry	44	4	-	48	731	152	-	883	4	38	-	42	27	15	-	42	866	227	-	1,093
Graduate School	-	28	-	28	-	551	-	551	-	73	-	73	-	63	-	63	-	830	-	830
Liberal Arts	275	16	-	291	2,628	148	-	2,776	202	42	-	244	119	8	-	127	3,917	261	-	4,178
Pharmacy	-	-	20	20	-	7	153	160	-	15	5	20	-	3	6	9	-	28	342	370
Public Health and Human Sci	206	19	-	225	1,872	137	-	2,009	46	26	-	72	33	13	-	46	2,758	251	-	3,009
Science	232	14	-	246	1,866	227	-	2,093	127	109	-	236	58	13	-	71	3,094	409	-	3,503
Univ. Explor. Studies	65	-	-	65	614	-	-	614	167	-	-	167	20	-	-	20	1,081	-	-	1,081
Vet. Medicine	-	-	6	6	-	2	178	180	-	-	2	2	-	-	5	5	-	2	219	221
<b>Total</b>	<b>1,687</b>	<b>133</b>	<b>26</b>	<b>1,846</b>	<b>16,215</b>	<b>2,285</b>	<b>331</b>	<b>18,831</b>	<b>2,182</b>	<b>1,340</b>	<b>7</b>	<b>3,529</b>	<b>579</b>	<b>200</b>	<b>11</b>	<b>790</b>	<b>25,327</b>	<b>4,466</b>	<b>561</b>	<b>30,354</b>

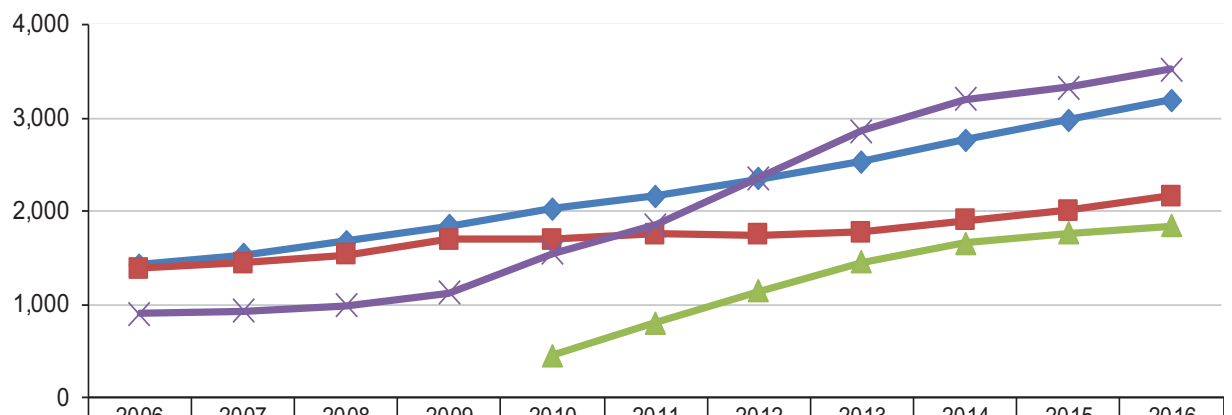
\*International students are identified by citizenship code. Students with unknown visa type are not included in International counts.

## Minority Enrollment by Gender and Academic Unit

	Agricultural Sciences		Earth, Ocean, & Atmospheric Sciences			Graduate School			Public Health & Human Sciences		Univ. Explor. Studies	Veterinary Medicine	Total	
	Sciences	Business	Sciences	Education	Engineering	Forestry	School	Liberal Arts	Pharmacy	Sciences	Science			
Men	166	414	58	22	1,515	68	51	398	80	275	466	149	5	3,667
Women	312	343	73	48	473	58	92	1,031	101	607	637	131	29	3,935
<b>Total</b>	<b>478</b>	<b>757</b>	<b>131</b>	<b>70</b>	<b>1,988</b>	<b>126</b>	<b>143</b>	<b>1,031</b>	<b>181</b>	<b>882</b>	<b>1,103</b>	<b>280</b>	<b>34</b>	<b>7,204</b>

## Minority Enrollment Trend

Fall Term	American Indian/ Alaskan Native	Asian	Black	Hispanic	Native Hawaiian/ Pacific Islander	Two or More Races	TOTAL	One Year % change
2006	245	1,383	275	732	171		2,806	2.9%
2007	248	1,439	297	793	198		2,975	6.0%
2008	256	1,527	321	911	192		3,207	7.8%
2009	292	1,698	321	1,024	207		3,542	10.4%
2010	255	1,696	325	1,292	160	451	4,179	18.0%
2011	248	1,754	303	1,483	128	805	4,721	13.0%
2012	214	1,742	334	1,685	111	1,138	5,224	10.7%
2013	184	1,774	366	1,881	103	1,456	5,764	10.3%
2014	172	1,901	395	2,101	98	1,653	6,320	9.6%
2015	167	2,004	406	2,330	81	1,766	6,754	6.9%
2016	154	2,168	418	2,536	82	1,846	7,204	6.7%



	2006	2007	2008	2009	2010	2011	2012	2013	2014	2015	2016
URM*	1,423	1,536	1,680	1,844	2,032	2,162	2,344	2,534	2,766	2,984	3,190
Asian	1,383	1,439	1,527	1,698	1,696	1,754	1,742	1,774	1,901	2,004	2,168
Two or More Races					451	805	1,138	1,456	1,653	1,766	1,846
International	897	928	988	1,120	1,548	1,852	2,362	2,859	3,202	3,328	3,529

\*URM includes American Indian/Alaskan Native, Black, Hispanic, and Native Hawaiian/Pacific Islander.

## Enrollment by Geographic Origin

### Oregon Counties

Baker	46
Benton	1,546
Clackamas	2,274
Clatsop	132
Columbia	155
Coos	172
Crook	51
Curry	52
Deschutes	764
Douglas	392
Gilliam	4
Grant	17
Harney	29
Hood River	114
Jackson	529
Jefferson	64
Josephine	208
Klamath	177
Lake	35
Lane	1,367
Lincoln	213
Linn	817
Malheur	75
Marion	1,418
Morrow	50
Multnomah	2,220
Polk	472
Sherman	16
Tillamook	94
Umatilla	201
Union	81
Wallowa	26
Wasco	71
Washington	3,375
Wheeler	3
Yamhill	448
<b>Total for Oregon</b>	<b>17,708</b>

### United States

Alabama	42
Alaska	134
Arizona	175
Arkansas	30
California	2,983
Colorado	257
Connecticut	41
Delaware	15
District of Columbia	18
Florida	170
Georgia	102
Hawaii	379
Idaho	201
Illinois	144
Indiana	60
Iowa	42
Kansas	47
Kentucky	35
Louisiana	46
Maine	20
Maryland	96
Massachusetts	85
Michigan	122
Minnesota	111

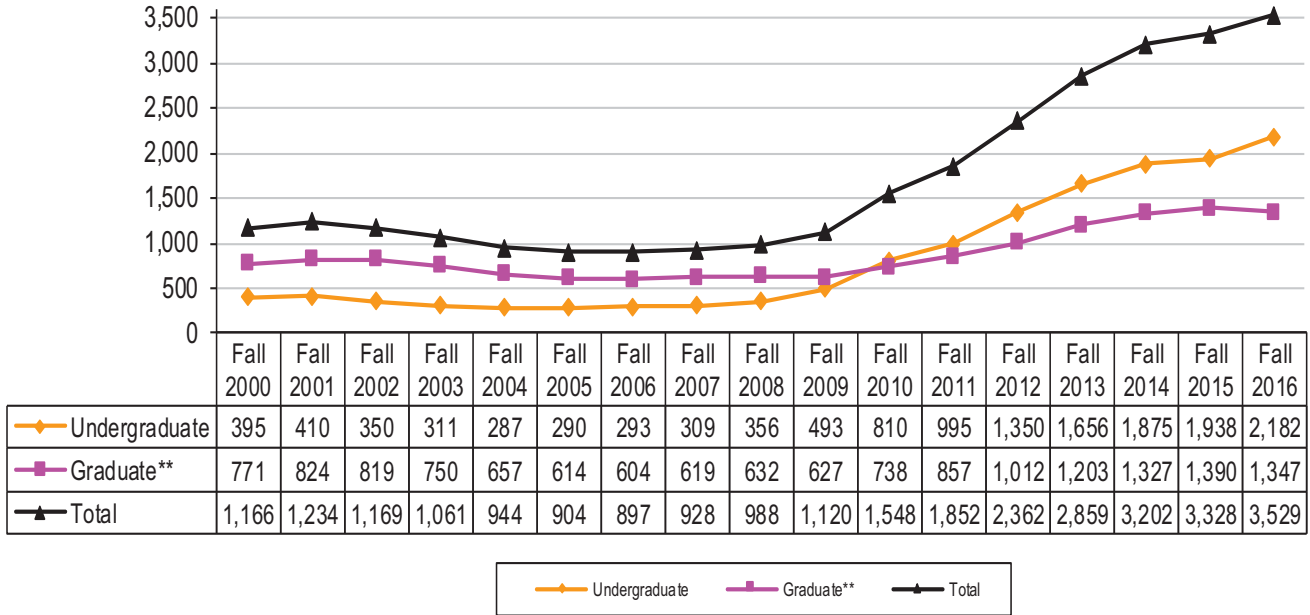
Mississippi	19	Iran	95
Missouri	85	Iraq	31
Montana	71	Ireland	1
Nebraska	33	Israel	5
Nevada	134	Italy	6
New Hampshire	20	Jamaica	1
New Jersey	95	Japan	55
New Mexico	71	Jordan	6
New York	199	Kazakhstan	10
North Carolina	118	Kenya	4
North Dakota	17	Kuwait	48
Ohio	120	Kyrgyzstan	1
Oklahoma	48	Lebanon	4
Pennsylvania	142	Libya	14
Rhode Island	23	Macau	2
South Carolina	40	Macedonia	1
South Dakota	15	Malawi	1
Tennessee	59	Malaysia	56
Texas	300	Maldives	1
U.S. Possessions/Territories	104	Malta	1
Utah	115	Mauritius	2
Vermont	22	Mexico	26
Virginia	128	Mongolia	2
Washington	1,396	Montenegro	1
West Virginia	19	Morocco	2
Wisconsin	77	Nepal	18
Wyoming	33	Netherlands	6
<b>Total for U.S. States</b>	<b>8,858</b>	New Zealand	8

### Foreign Countries\*

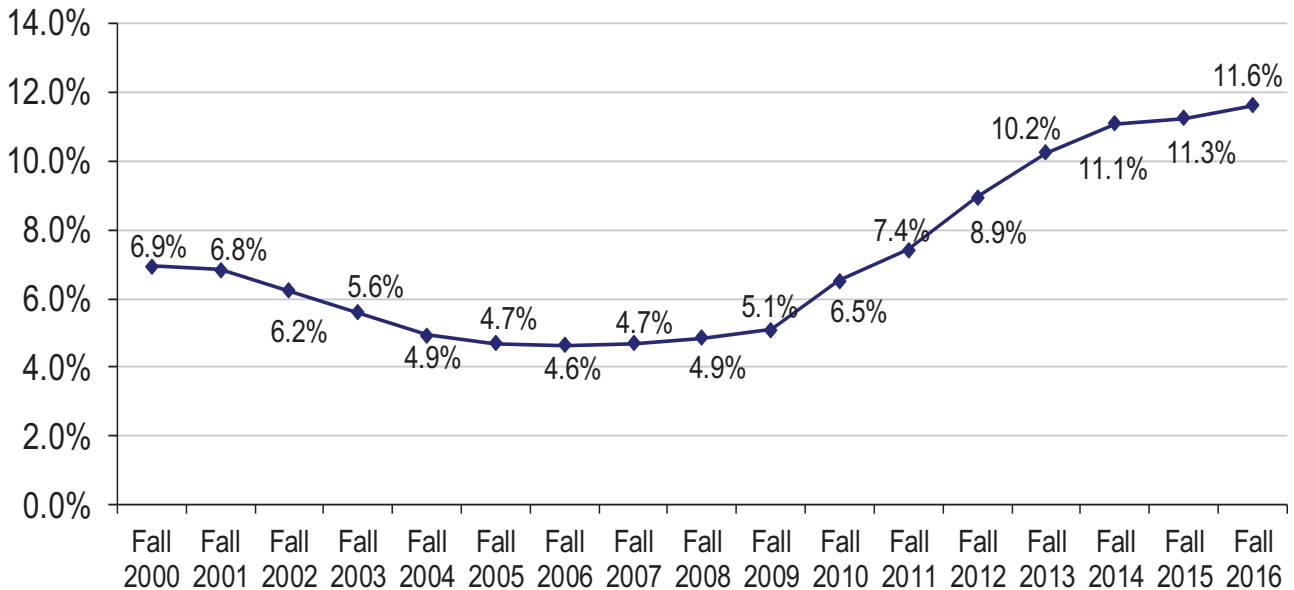
Afghanistan	2	Oman, Sultanate Of	91
Albania	1	Pakistan	31
Argentina	3	Panama	1
Australia	13	Peru	10
Austria	6	Philippines	1
Bahamas	1	Poland	1
Bahrain	1	Portugal	1
Bangladesh	25	Qatar	29
Belarus	1	Romania	1
Belgium	1	Russia	13
Belize	1	Rwanda	2
Bolivia	2	Samoa	1
Bosnia and Herzegovina	1	Saudi Arabia	302
Brazil	27	Senegal	2
Burkina Faso	1	Singapore, Republic of	9
Burma	13	South Africa	4
Cambodia	1	South Korea	141
Cameroon	1	Spain	9
Canada	65	Sri Lanka	11
Chad	1	Sudan	2
Chile	8	Sweden	2
China, Peoples Republic Of	1,496	Syria	1
Colombia	11	Taiwan, Republic of China	127
Congo (Republic)	1	Tanzania	1
Costa Rica	3	Thailand	40
Cyprus	4	Trinidad And Tobago	1
Czech Republic	6	Tunisia	5
Democratic Rep of the Congo	1	Turkey	21
Denmark	10	Uganda	3
Dominica	1	Ukraine	4
Dominican Republic	1	United Arab Emirates	44
Ecuador	7	United Kingdom	32
Egypt	7	Uzbekistan	1
Eritrea	3	Venezuela	4
Ethiopia	3	Vietnam	57
France	23	Yemen	3
Gaza	1	Zimbabwe	1
Germany	28	<b>Total for Foreign Countries</b>	<b>3,615</b>
Ghana	1	<b>Unknown</b>	<b>173</b>
Greece	1	<b>GRAND TOTAL</b>	<b>30,354</b>
Guatemala	2		
Honduras	1		
Hong Kong	19		
Hungary	4		
Iceland	1		
India	188		
Indonesia	185		

\*Foreign countries are based upon country of citizenship.

### International\* Student Enrollment Fall Term 2000 to Fall Term 2016



### International Student Percent of Total OSU Enrollment



\*Fall 2000-2006, International students are identified by residency code. Fall 2007-2009, international students were identified by Admit Type code. Since Fall 2010, international students were identified by citizenship code. Students with unknown visa type are not included in International counts for Fall 2015 and Fall 2016.

\*\* Includes First Professional Students.

**OSU Extended Campus**

**Enrollment, Credit Hours, and FTE by Class Standing**

Students Who Took Courses Through Ecampus\*

<u>Class Standing</u>	<u>Student Enrollment</u>	<u>Student Credit Hours</u>	<u>Student FTE</u>
Freshman	587	2,744	182.9
Sophomore	1,318	6,478	431.9
Junior	2,484	14,569	971.3
Senior	3,512	21,242	1,416.1
Post Baccalaureate	1,657	10,618	707.9
Non-Degree Undergrad	420	1,592	106.1
<b>Total for Undergraduate</b>	<b>9,978</b>	<b>57,243</b>	<b>3,816.2</b>
Masters	415	1,820	151.7
Doctoral	180	737	81.9
Non-Degree Graduate	671	2,744	228.7
<b>Total for Graduate</b>	<b>1,266</b>	<b>5,301</b>	<b>462.2</b>
Doctor of Pharmacy	7	25	2.1
Veterinary Medicine	-	-	-
<b>Total for First Professional</b>	<b>7</b>	<b>25</b>	<b>2.1</b>
<b>GRAND TOTAL (Fall 2016)</b>	<b>11,251</b>	<b>62,569</b>	<b>4,280.5</b>
(Fall 2015)	10,148	54,572	3,737.7

\*Includes students that also took on-campus courses.

**Enrollment by Class Standing and Residency**

Students Who Took Courses Only Through Ecampus\*\*

<u>Class Standing</u>	<u>Oregon Resident</u>	<u>Non-Resident</u>	<u>Total</u>
Freshman	34	94	128
Sophomore	130	211	341
Junior	392	524	916
Senior	746	753	1,499
Post Baccalaureate	190	1,274	1,464
Non-Degree Undergrad	37	311	348
<b>Total for Undergraduate</b>	<b>1,529</b>	<b>3,167</b>	<b>4,696</b>
Masters	149	136	285
Doctoral	42	73	115
Non-Degree Graduate	135	451	586
<b>Total for Graduate</b>	<b>326</b>	<b>660</b>	<b>986</b>
Doctor of Pharmacy	0	0	0
Veterinary Medicine	0	0	0
<b>Total for First Professional</b>	<b>0</b>	<b>0</b>	<b>0</b>
<b>GRAND TOTAL (Fall 2016)</b>	<b>1855</b>	<b>3827</b>	<b>5682</b>
(Fall 2015)	1691	3418	5109

\*\*Table indicates students enrolled only in Ecampus-offered courses; i.e., students are not enrolled in any on-campus courses.

**Student Credit Hours by Academic Unit\* and Class Standing**

Academic Unit*	Freshman	Sophomore	Junior	Senior	Post Bac	Non-Degree Undergrad	Undergrad Total	Master	Doctorate	Non-Degree Grad	Grad Total	First Professional	TOTAL
AG	393	1,181	2,275	4,510	762	212	9,333	133	17	515	665	-	9,998
BUS	50	298	1,982	1,524	54	8	3,916	261	-	29	290	25	4,231
EOAS	100	334	593	841	101	31	2,000	22	4	113	139	-	2,139
ED	-	18	36	42	-	3	99	731	606	114	1,451	-	1,550
ENGR	26	203	606	902	8,178	48	9,963	274	8	47	329	-	10,292
FOR	25	167	373	1,029	129	50	1,773	161	11	265	437	-	2,210
LA	1,340	2,719	5,163	7,705	833	714	18,474	124	16	546	686	-	19,160
PHARM	4	2	2	18	6	2	34	-	-	8	8	-	42
PHHS	204	571	1,672	2,144	76	29	4,696	19	18	256	293	-	4,989
SCI	568	961	1,819	2,454	468	491	6,761	50	16	828	894	-	7,655
ALS**	34	24	44	32	8	4	146	-	-	-	-	-	146
GRAD	-	-	4	16	2	-	22	45	41	23	109	-	131
<b>Total SCH</b>	<b>2,744</b>	<b>6,478</b>	<b>14,569</b>	<b>21,242</b>	<b>10,618</b>	<b>1,592</b>	<b>57,243</b>	<b>1,820</b>	<b>737</b>	<b>2,744</b>	<b>5,301</b>	<b>25</b>	<b>62,569</b>
<b>Total FTE</b>	<b>182.9</b>	<b>431.9</b>	<b>971.3</b>	<b>1,416.1</b>	<b>707.9</b>	<b>106.1</b>	<b>3,816.2</b>	<b>151.7</b>	<b>81.9</b>	<b>228.7</b>	<b>462.2</b>	<b>2.1</b>	<b>4,280.5</b>

\*Academic Units are those that offered the courses. \*\*Academic Learning Services. \*\*\*Interdisciplinary Programs.



### OSU Extended Campus Student Enrollment by Academic Unit and Ethnicity

All Students Who Took Courses Through ECampus

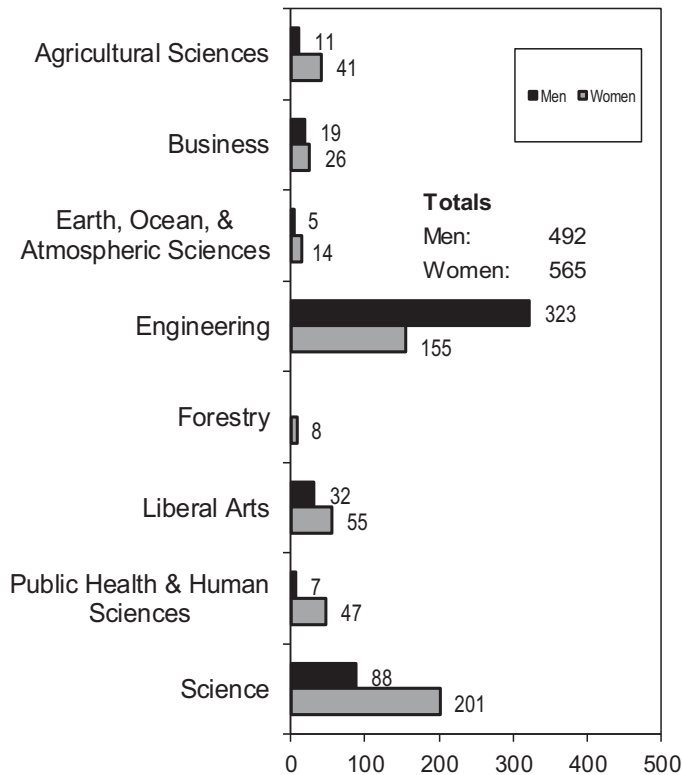
Acad. Unit	American Indian /Alaskan Native		Asian		Black		Hispanic		Native Hawaiian/ Pacific Islander		Two or More Races		White		International		Declined to Respond / Missing		TOTAL											
	Under-grad	Grad	Under-grad	Total	Under-grad	Grad	Under-grad	Total	Under-grad	Grad	Under-grad	Total	Under-grad	Grad	Under-grad	Total	Under-grad	Grad	Under-grad	Total										
AG	10	2	12	15	3	18	11	2	13	101	8	109	1	-	1	74	1	75	988	60	998	19	1	20	47	2	49	1,216	79	1,295
BUS	6	-	6	61	9	70	14	-	14	88	4	92	3	-	3	80	2	82	706	47	753	281	5	286	18	2	20	1,257	69	1,326
EOAS	2	-	2	6	-	6	2	-	2	24	2	26	2	-	2	15	-	15	221	25	246	3	-	3	8	4	12	288	31	314
ED	-	2	2	-	12	12	-	12	12	-	21	21	-	1	1	-	13	13	1	169	170	-	1	1	-	15	15	1	246	247
ENGR	6	1	7	271	8	279	43	4	47	167	3	170	5	-	5	119	4	123	1,396	59	1,455	257	29	286	119	4	123	2,383	112	2,495
FOR	4	2	6	5	2	7	3	-	3	28	8	36	-	-	-	31	-	31	435	75	510	1	2	3	16	9	25	523	98	621
GRAD	-	1	1	-	22	22	-	19	19	-	38	38	-	2	2	-	19	19	-	391	391	-	24	24	-	48	48	-	564	564
LA	15	-	15	63	-	63	48	-	48	185	2	187	17	-	17	125	1	126	1,347	10	1,357	94	1	95	89	-	89	1,983	14	1,997
PHARM*	-	-	-	-	3	3	-	-	-	-	-	-	-	-	-	-	1	1	-	5	5	-	1	1	-	2	2	-	12	12
PHHS	14	-	14	62	1	63	24	1	25	112	1	113	3	-	3	87	2	89	864	22	886	22	4	26	20	5	25	1,208	36	1,244
SCI	2	-	2	90	2	92	12	-	12	61	-	61	-	-	-	57	1	58	466	7	493	36	1	37	27	1	28	771	12	783
UESP	2	-	2	15	-	15	18	-	18	39	-	39	10	-	10	25	-	25	217	-	217	12	-	12	15	-	15	353	-	353
VM*	-	-	-	-	-	-	-	-	-	-	-	-	-	-	-	-	-	-	-	-	-	-	-	-	-	-	-	-	-	-
<b>Total</b>	<b>61</b>	<b>8</b>	<b>69</b>	<b>588</b>	<b>62</b>	<b>650</b>	<b>175</b>	<b>38</b>	<b>213</b>	<b>805</b>	<b>87</b>	<b>892</b>	<b>41</b>	<b>3</b>	<b>44</b>	<b>613</b>	<b>44</b>	<b>657</b>	<b>6,611</b>	<b>870</b>	<b>7,481</b>	<b>725</b>	<b>69</b>	<b>794</b>	<b>359</b>	<b>92</b>	<b>451</b>	<b>9,978</b>	<b>1,273</b>	<b>11,251</b>

\*First Professional students are included in the graduate totals.

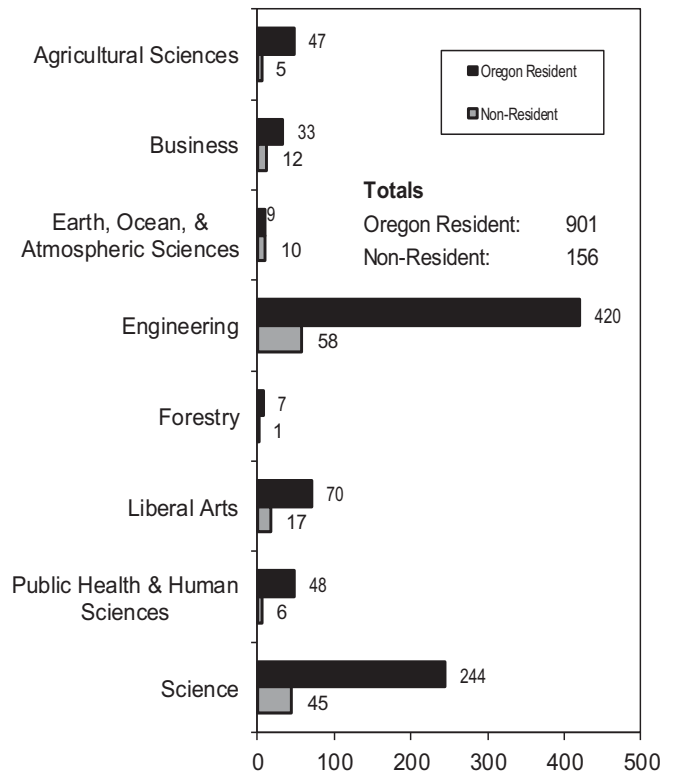
## University Honors College Students By Academic Unit and Student Class Standing

Academic Unit	Freshman	Sophomore	Junior	Senior	Total	% of Undergrad Enrollment for College
Agricultural Sciences	7	15	12	18	52	2.4
Business	9	9	12	15	45	1.3
Earth, Ocean, and Atmospheric Sciences	4	8	4	3	19	3.3
Engineering	92	112	129	145	478	6.5
Forestry	0	3	3	2	8	0.9
Liberal Arts	17	20	16	34	87	2.2
Public Health and Human Sciences	11	13	16	14	54	2.0
Science	56	87	53	93	289	9.3
University Exploratory Studies	9	13	3	0	25	2.3
<b>TOTAL</b>	<b>205</b>	<b>280</b>	<b>248</b>	<b>324</b>	<b>1,057</b>	<b>4.2</b>

### By Academic Unit and Gender



### By Academic Unit and Residency



## Cascades Campus Enrollment

Fall Term 2016				
Enrollment Type		2015	2016	Change
<b>OSU-Cascades Enrollment*</b>	<b>Headcount</b>	1016	<b>1,122</b>	<b>10.4%</b>
	<b>Term FTE</b>	603.8	<b>693.3</b>	<b>14.8%</b>

<i>COCC Enrolled Students (OSU Admitted)**</i>	<i>Headcount</i>	141	<b>93</b>	<b>-34.0%</b>
	<i>Term FTE</i>	111.2	<b>54.1</b>	<b>-51.3%</b>
<i>Total Students Receiving Services</i>	<i>Headcount</i>	1,157	<b>1,215</b>	<b>5.0%</b>
	<i>Term FTE</i>	715.0	<b>747.4</b>	<b>4.5%</b>

\*Source: Office of Institutional Research, Oregon State University.

\*\*Source: OSU-Cascades.

## Oregon State University - Cascades Campus

	2015		2016		Change	
	<u>Headcount</u>	<u>Percent</u>	<u>Headcount</u>	<u>Percent</u>	<u>Headcount</u>	<u>Percent</u>
<b>Women</b>	549	54.0%	<b>620</b>	<b>55.3%</b>	71	12.9%
<b>Men</b>	467	46.0%	<b>502</b>	<b>44.7%</b>	35	7.5%
<b>Full-Time</b>	367	36.1%	<b>450</b>	<b>40.1%</b>	83	22.6%
<b>Part-Time</b>	649	63.9%	<b>672</b>	<b>59.9%</b>	23	3.5%
<b>Undergraduate</b>	857	84.4%	<b>912</b>	<b>81.3%</b>	55	6.4%
<b>Graduate</b>	159	15.6%	<b>210</b>	<b>18.7%</b>	51	32.1%
<b>U.S. Minorities Total</b>	175	17.2%	<b>205</b>	<b>18.3%</b>	30	17.1%
<b>American Indian/Alaskan Native</b>	8	0.8%	<b>8</b>	<b>0.7%</b>	0	0.0%
<b>Asian</b>	15	1.5%	<b>23</b>	<b>2.0%</b>	8	53.3%
<b>Black</b>	5	0.5%	<b>5</b>	<b>0.4%</b>	0	0.0%
<b>Hispanic</b>	81	8.0%	<b>93</b>	<b>8.3%</b>	12	14.8%
<b>Native Hawaiian/Pacific Islander</b>	1	0.1%	<b>3</b>	<b>0.3%</b>	2	200.0%
<b>Two or More Races</b>	65	6.4%	<b>73</b>	<b>6.5%</b>	8	12.3%
<b>International</b>	2	0.2%	<b>5</b>	<b>0.4%</b>	3	150.0%
<b>Oregon Residents</b>	944	92.9%	<b>1,035</b>	<b>92.2%</b>	91	9.6%
<b>Non-Residents</b>	72	7.1%	<b>87</b>	<b>7.8%</b>	15	20.8%
<b>Undergrad &lt; 25</b>	402	39.6%	<b>464</b>	<b>41.4%</b>	62	15.4%
<b>Undergrad 25 and Older</b>	455	44.8%	<b>448</b>	<b>39.9%</b>	-7	-1.5%
<b>Graduate &lt; 25</b>	16	1.6%	<b>31</b>	<b>2.8%</b>	15	93.8%
<b>Graduate 25 and Older</b>	143	14.1%	<b>179</b>	<b>16.0%</b>	36	25.2%
<b>Veteran Total</b>	62	6.1%	<b>74</b>	<b>6.6%</b>	12	19.4%
<b>Undergraduate</b>	55		<b>69</b>		14	25.5%
<b>% of Undergraduate</b>	6.4%		<b>7.6%</b>			
<b>Graduate</b>	7		<b>5</b>		-2	-28.6%
<b>%of Graduate</b>	4.4%		<b>2.4%</b>			
<b>First Generation College (Undergraduate)</b>	300		<b>323</b>		23	7.7%
<b>% of Undergraduate</b>	35.0%		<b>35.4%</b>			

**Oregon State University - Cascades Campus**

<b>Class Standing</b>		<b>2015</b>	<b>2016</b>	<b>Change</b>
Freshman	Headcount	62	73	17.7%
	Credit Hours	468	660	41.0%
	FTE*	31.2	44.0	41.0%
Sophomore	Headcount	94	116	23.4%
	Credit Hours	569	749	31.6%
	FTE*	37.9	49.9	31.6%
Junior	Headcount	270	285	5.6%
	Credit Hours	1,967	2,456	24.9%
	FTE*	131.1	163.7	24.9%
Senior	Headcount	399	406	1.8%
	Credit Hours	3,760	3,966	5.5%
	FTE*	250.7	264.4	5.5%
Postbac Degree Seeking	Headcount	29	24	-17.2%
	Credit Hours	217	158	-27.2%
	FTE*	14.5	10.5	-27.2%
Non-degree Undergraduate	Headcount	3	8	166.7%
	Credit Hours	9	31	244.4%
	FTE*	0.6	2.1	244.4%
<b>Undergraduate Subtotal</b>	Headcount	857	912	6.4%
	Credit Hours	6,990	8,020	14.7%
	FTE*	466.0	534.7	14.7%
Masters	Headcount	138	151	9.4%
	Credit Hours	1,583	1,761	11.2%
	FTE*	131.9	146.8	11.2%
Non-Degree Graduate	Headcount	21	59	181.0%
	Credit Hours	70	142	102.9%
	FTE*	5.8	11.8	102.9%
<b>Graduate Subtotal</b>	Headcount	159	210	32.1%
	Credit Hours	1,653	1,903	15.1%
	FTE*	137.8	158.6	15.1%
<b>TOTAL</b>	Headcount	1,016	1,122	10.4%
	Credit Hours	8,643	9,923	14.8%
	FTE*	603.8	693.3	14.8%

\* FTE divisor: Undergraduate, 15 credits; Graduate, 12 credits

## INTO Oregon State University Fall Term 2016 Enrollment

	2015		2016		Change	
	Headcount	Percent	Headcount	Percent	Headcount	Percent
Academic English	641	50.9%	409	40.0%	-232	-36.2%
General English	86	6.8%	33	3.2%	-53	-61.6%
Graduate Pathways	202	16.0%	168	16.4%	-34	-16.8%
OSU-Student-CAP	16	1.3%	8	0.8%	-8	-50.0%
Study Abroad	6	0.5%	10	1.0%	4	66.7%
Undergraduate Pathways	309	24.5%	395	38.6%	86	27.8%
Female	379	30.1%	314	30.7%	-65	-17.2%
Male	881	69.9%	709	69.3%	-172	-19.5%
25 and Older	275	21.8%	197	19.3%	-78	-28.4%
Less than 25	985	78.2%	826	80.7%	-159	-16.1%
<b>Total</b>	<b>1,260</b>	<b>100.0%</b>	<b>1,023</b>	<b>100.0%</b>	<b>-237</b>	<b>-18.8%</b>

Enrollment by Country		
Country	Headcount	Percent
Bangladesh	1	0.1%
Brazil	3	0.3%
Burma	2	0.2%
Canada	1	0.1%
Chile	2	0.2%
China, Peoples Republic Of	591	57.8%
Colombia	1	0.1%
Czech Republic	1	0.1%
Ecuador	1	0.1%
Egypt	1	0.1%
Germany	1	0.1%
Hong Kong	2	0.2%
India	18	1.8%
Indonesia	28	2.7%
Iran	3	0.3%
Italy	1	0.1%
Jamaica	1	0.1%
Japan	22	2.2%
Kazakhstan	2	0.2%
Kenya	1	0.1%
Kuwait	13	1.3%
Malaysia	1	0.1%
Mexico	1	0.1%
Oman, Sultanate Of	9	0.9%
Pakistan	10	1.0%
Qatar	9	0.9%
Russia	3	0.3%
Saudi Arabia	179	17.5%
Singapore, Republic of	1	0.1%
South Korea	34	3.3%
Taiwan, Republic of China	55	5.4%
Thailand	10	1.0%
United Arab Emirates	6	0.6%
United Kingdom	1	0.1%
Uzbekistan	1	0.1%
Vietnam	5	0.5%
Yemen	1	0.1%
Unknown	1	0.1%
<b>Total</b>	<b>1,023</b>	<b>100.0%</b>

Enrollment by College and Major		
College	Major	Headcount
Agricultural Sciences	Food Science and Technology	4
Business	Pre-Business	119
Business	Pre-MBA	49
Engineering	Chemical Engineering	6
Engineering	Civil Engineering	13
Engineering	Computer Science	34
Engineering	Construction Engineering Management	6
Engineering	Electrical and Computer Engineering	22
Engineering	Environmental Engineering	9
Engineering	Industrial Engineering	11
Engineering	Mechanical Engineering	19
Engineering	Pre-Computer Science	30
Engineering	Pre-Electrical and Computer Engineering	1
Engineering	Pre-General Engineering	96
Forestry	Renewable Materials	1
Liberal Arts	Economics	3
Liberal Arts	Liberal Studies	15
Public Health and Human Sciences	Exercise and Sport Science	1
Public Health and Human Sciences	Kinesiology	1
Public Health and Human Sciences	Public Health	1
Science	Chemistry	1
Science	General Science	24
Science	Mathematics	1
Graduate School	Environmental Sciences	1
Graduate School	Pre-Comparative Health Sciences	1
Intensive English Program	Academic English	226
Intensive English Program	Academic English to CAP	6
Intensive English Program	Academic English to Pathway	172
Intensive English Program	Study Abroad with English	3
Non-Credit	General English	35
University Exploratory Studies Program	Study Abroad with English Part 2	9
University Exploratory Studies Program	University Exploratory Studies	102
University Exploratory Studies Program	Visiting International Student Program	1
<b>Total</b>		<b>1,023</b>

## History of Student Enrollment

### Fall Term Headcount - 4th Week

Academic Year	Undergraduate	Graduate	First Professional	TOTAL	% CHANGE
1991-92	12,070	2,778	67	14,915	-6.9
1992-93	11,430	2,835	71	14,336	-3.9
1993-94	11,261	2,938	65	14,264	-0.5
1994-95	11,221	3,034	68	14,323	0.4
1995-96	11,280	2,805	76	14,161	-1.1
1996-97	11,019	2,677	88	13,784	-2.7
1997-98	11,382	2,656	89	14,127	2.5
1998-99	11,998	2,539	81	14,618	3.5
1999-00	13,167	2,773	151	16,091	10.1
2000-01	13,772	2,789	227	16,788	4.3
2001-02	14,877	2,868	289	18,034	7.4
2002-03	15,413	3,015	361	18,789	4.2
2003-04	15,599	2,988	392	18,979	1.0
2004-05	15,713	3,000	449	19,162	1.0
2005-06	15,747	2,976	513	19,236	0.4
2006-07	15,829	3,001	532	19,362	0.7
2007-08	16,228	2,994	531	19,753	2.0
2008-09	16,673	3,095	552	20,320	2.9
2009-10	18,067	3,328	574	21,969	8.1
2010-11	19,559	3,618	584	23,761	8.2
2011-12	20,621	3,776	580	24,977	5.1
2012-13	21,812	3,993	588	26,393	5.7
2013-14	23,161	4,179	585	27,925	5.8
2014-15	23,903	4,410	573	28,886	3.4
2015-16	24,612	4,385	579	29,576	2.4
<b>2016-17</b>	<b>25,327</b>	<b>4,466</b>	<b>561</b>	<b>30,354</b>	<b>2.6</b>

## Highlights

- For Fall 2016, total enrollment was 30,354 students.
- When Fall 2015 and Fall 2016 are compared, the total enrollment increased by 778 students or 2.6% (from 29,576 to 30,354), the FTE increased by 2.2%, and the Student Credit Hours increased by 2.2%.
- The number of part-time students increased by 5.6% (from 7,489 to 7,911).
- When compared to Fall 2015, the undergraduate enrollment increased by 715 students, or 2.9% (from 24,612 to 25,327); the graduate enrollment increased by 1.8% (from 4,385 to 4,466); the first professional enrollment decreased by 3.1% (from 579 to 561).
- When compared to Fall 2015, Oregon residents increased by 0.5%; non-resident increased by 5.9%; and international student enrollment increased by 6.0%.
- University Honors College had an enrollment of 1,057.
- INTO OSU had a total enrollment of 1,023: 409 in Academic English program, 33 in INTO OSU General Pathways, 168 in INTO OSU Graduate Pathways, 8 in OSU-Student-Cap, 10 in Study Abroad, and 395 in Undergraduate Pathway program.
- The College of Engineering had the largest student enrollment (8,724) when compared to the other academic units.
- OSU Extended Campus had 11,251 students, an increase of 10.9% compared to Fall 2015. These students took 62,569 credits, of which 30.6% were from the College of Liberal Arts, while 16.4% were from the College of Engineering.
- The percentage of U.S. minority students was 23.7% of the total enrollment. The number of minority students increased by 6.7% when compared to Fall 2015 (from 6,754 to 7,204).
- Most popular undergraduate majors for Fall 2016 were:

Computer Science	2,386
Business Administration	1,731
Mechanical Engineering	1,416
Kinesiology	1,050
Biology	987

Source: Fall Term 2016, 4th Week Student Data Extract File.

Comments about this publication are welcome.

Please contact the staff in the Office of Institutional Research, 500 Kerr Administration Building (541-737-9600).