



Enrollment Summary — Fall Term 2012

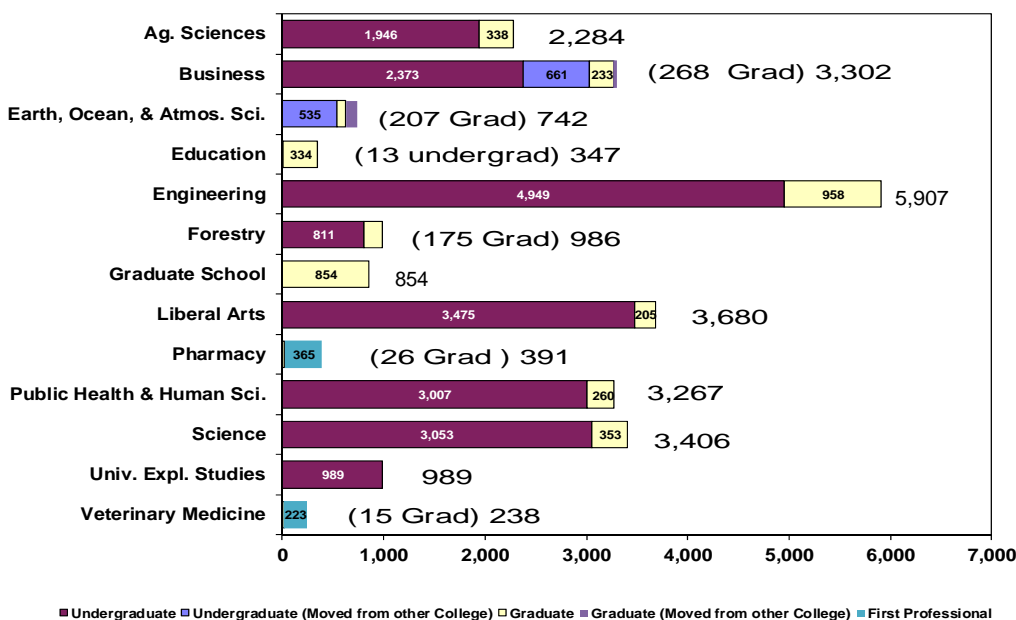
Office of Institutional Research • No. 24 • November 2012 • <http://oregonstate.edu/admin/aa/ir/enrollmentdemographic-reports>

Enrollment at-a-Glance

	2011	2012	Change	% Change	*Fall Term uses the OUS definition, which excludes credit hours and FTE for students who withdrew from courses before the 4th week. Agribusiness credits at EOU are also not included.
Total Enrollment (Headcount)	24,977	26,393	1,416	5.7%	
Total Student FTE *	22,509.0	23,461.9	952.9	4.2%	
Total Student Credit Hours*	318,743	332,243	13,500	4.2%	

	2011		2012		Change	
	Headcount	Percent	Headcount	Percent	Headcount	Percent
Women	11,899	47.6%	12,457	47.2%	558	4.7%
Men	13,078	52.4%	13,936	52.8%	858	6.6%
Full-Time	20,210	80.9%	21,086	79.9%	876	4.3%
Part-Time	4,767	19.1%	5,307	20.1%	540	11.3%
Undergraduate	20,621	82.6%	21,812	82.6%	1,191	5.8%
Graduate	3,776	15.1%	3,993	15.1%	217	5.7%
First Professional	580	2.3%	588	2.2%	8	1.4%
U.S. Minorities	4,721	18.9%	5,224	19.8%	503	10.7%
Oregon Residents Total	17,360	69.5%	17,487	66.3%	127	0.7%
Undergraduate	15,526	62.2%	15,717	59.5%	191	1.2%
Graduate	1,388	5.6%	1,321	5.0%	-67	-4.8%
First Professional	446	1.8%	449	1.7%	3	0.7%
Non-Residents Total	7,617	30.5%	8,906	33.7%	1,289	16.9%
Undergraduate	5,095	20.4%	6,095	23.1%	1,000	19.6%
Graduate	2,388	9.6%	2,672	10.1%	284	11.9%
First Professional	134	0.5%	139	0.5%	5	3.7%
International	1,852	7.4%	2,362	8.9%	510	27.5%
Undergrad < 25	17,164	68.7%	17,848	67.6%	684	4.0%
Undergrad 25 and Older	3,457	13.8%	3,964	15.0%	507	14.7%
Graduate < 25	995	4.0%	1,070	4.1%	75	7.5%
Graduate 25 and Older	2,781	11.1%	2,923	11.1%	142	5.1%
First Professional < 25	268	1.1%	285	1.1%	17	6.3%
First Professional 25 and Older	312	1.2%	303	1.1%	-9	-2.9%

Enrollment by Academic Unit* and Student Level



Index

	Page
Academic Unit	1-2, 4-7, 10-11, 14-16
Admissions	2
Age	8
Class Standing	4, 8, 14-16
Extended Campus	14-15
Freshman GPA, SAT, ACT	2
Full Time, Part Time	1, 9
Gender	1-2, 4, 8-11, 16
Geographic Origin	12
Highlights	20
History of Enrollment.....	20
Honors College	16
International	1, 13
INTO-OSU	19
Major.....	5-7
New Students	2-3
OSU-Cascades Campus.....	17-18
Residency	1, 9, 14, 16
Undergrad/Grad/First Prof...1-10, 13	
U.S Minorities	10-11

*Unduplicated headcount based upon student's primary college.

Applications and Admissions Summary

	# of Applications	# of Admitted	Ratio of Admitted to Applications	# of Enrolled*	Ratio of Enrolled to Admitted
Undergraduate	16,609	12,797	77.0%	5,566	43.5%
Graduate	5,822	2,031	34.9%	1,347	66.3%
First Professional**	154	153	99.4%	144	94.1%
Total	22,585	14,981	66.3%	7,057	47.1%

*Fall Term 2012, 4th week Banner Student Data Extract File.

Source: OSU Admission and Orientation Office, SAR3100 on Oct. 21, 2012.

**No complete application data for First Professional students in Banner.

Freshman Entrance GPA, SAT, and ACT Scores

Mean High School GPA

Gender	2007	2008	2009	2010	2011	2012
Male	3.42	3.44	3.41	3.48	3.49	3.53
Female	3.52	3.52	3.53	3.55	3.57	3.60
Both	3.46	3.48	3.47	3.51	3.53	3.56

Mean SAT Verbal Score

Gender	2007	2008	2009	2010	2011	2012
Male	530	527	530	533	534	547
Female	521	515	518	522	522	534
Both	526	522	524	528	528	541

Mean SAT Math Score

Gender	2007	2008	2009	2010	2011	2012
Male	569	567	567	571	570	582
Female	524	520	522	525	527	537
Both	548	545	545	548	549	560

Mean SAT Writing Score

Gender	2007	2008	2009	2010	2011	2012
Male	-	496	498	501	505	518
Female	-	507	510	514	518	525
Both	-	501	504	508	512	521

Mean SAT Composite Score

Gender	2007	2008*	2009*	2010*	2011*	2012*
Male	1,099	1,591	1,594	1,605	1,601	1,638
Female	1,045	1,543	1,549	1,560	1,559	1,587
Both	1,074	1,568	1,572	1,583	1,580	1,614

*Includes SAT Writing Score.

Mean ACT English Score

Gender	2007	2008	2009	2010	2011	2012
Male	21.8	21.7	22.4	22.3	22.7	23.4
Female	22.3	22.0	22.4	22.4	22.7	23.7
Both	22.0	21.9	22.4	22.4	22.7	23.5

Mean ACT Math Score

Gender	2007	2008	2009	2010	2011	2012
Male	24.8	24.4	25.0	25.3	25.1	25.5
Female	22.4	22.3	22.5	22.7	22.6	23.5
Both	23.6	23.4	23.7	24.0	23.9	24.5

Mean ACT Composite Score

Gender	2007	2008	2009	2010	2011	2012
Male	23.4	23.5	24.2	24.1	24.1	24.7
Female	22.6	22.4	22.7	22.9	22.9	23.9
Both	23.0	23.0	23.5	23.5	23.5	24.3

New Students by Academic Unit

	New Students	Percent for Unit
Agricultural Sciences	533	23.3
Business	739	22.4
Earth, Ocean, and Atmospheric Sciences	173	23.3
Education	73	21.0
Engineering	1,729	29.3
Forestry	189	19.2
Graduate School	432	50.6
Liberal Arts	772	21.0
Pharmacy	95	24.3
Public Health and Human Sciences	678	20.8
Science	1,129	33.1
University Exploratory Studies	460	46.5
Veterinary Medicine	55	<u>23.1</u>
Total	7,057	26.7

New Students— Where They Came From

New Undergraduate Students from High School				
	2011	2012	Change	
			Headcount	Percent
Oregon High Schools	2,524	2,561	37	1.5%
U.S. High Schools	817	803	-14	-1.7%
International High Schools	84	79	-5	-6.0%
Unknown	14	16	2	14.3%
Total	3,439	3,459	20	0.6%
New Undergraduate Transfer Students				
Oregon Community Colleges	779	795	16	2.1%
OUS Institutions	126	137	11	8.7%
Oregon Private Institutions	30	33	3	10.0%
Out-of-State Institutions	440	463	23	5.2%
Foreign Country Institutions	16	34	18	112.5%
Unknown	31	20	-11	-35.5%
Total	1,422	1,482	60	4.2%
New Graduate and First Professional				
Masters	576	607	31	5.4%
Doctoral	210	205	-5	-2.4%
PharmD (Doctor of Pharmacy)	90	91	1	1.1%
Vet Med (Doctor of Veterinary Medicine)	54	53	-1	-1.9%
Total	930	956	26	2.8%
New Non-Degree and Post Baccalaureate Students				
Total	1,025	1,160	135	13.2%
Total New Students	6,816	7,057	241	3.5%
Re-Admit Students	306	290	-16	-5.2%
Continuing Students	17,855	19,046	1,191	6.7%
Grand Total	24,977	26,393	1,416	5.7%

New Students from Oregon Counties				
	2011	2012	2011	2012
Baker	10	4	Lake	8
Benton	394	374	Lane	370
Clackamas	551	566	Lincoln	47
Clatsop	50	30	Linn	203
Columbia	27	31	Malheur	16
Coos	62	51	Marion	373
Crook	9	9	Morrow	13
Curry	12	15	Multnomah	526
Deschutes	187	179	Polk	109
Douglas	80	90	Sherman	3
Gilliam	1	1	Tillamook	26
Grant	4	4	Umatilla	32
Hamey	10	7	Union	22
Hood River	23	21	Wallowa	5
Jackson	132	151	Wasco	25
Jefferson	10	15	Washington	729
Josephine	53	64	Wheeler	1
Klamath	51	54	Yamhill	103

New Undergraduate Students from High School			
Top Ten Oregon High Schools by Enrollment (Last Year's Rank)			
1. West Linn High School (6)	64	6. Beaverton High School (9)	48
2. Clackamas High School (3)	60	7. Wilsonville High School (40)	46
3. Tigard Senior High School (1)	60	8. Corvallis High School (7)	45
4. Tualatin High School (2)	59	9. Crescent Valley High School (9)	45
5. Westview High School (5)	51	10. Lake Oswego High School (17)	43
Top Ten States by Enrollment (Last Year's Rank)			
1. California (1)	314	6. Texas (6)	21
2. Washington (2)	212	7. Arizona (9)	19
3. Hawaii (3)	64	8. Nevada (4)	18
4. Idaho (5)	26	9. Alaska (6)	13
5. Colorado (8)	21	10. New York (19)	9

New Undergraduate Transfers from Oregon Community Colleges		
	2011	2012
Blue Mountain Com College	8	10
Central Oregon Com College	36	50
Chemeketa Community College	166	164
Clackamas Community College	67	61
Clatsop Community College	16	11
Klamath Community College	3	10
Lane Community College	66	72
Linn-Benton Community College	158	156
Mt Hood Community College	47	48
Portland Com College-Main	132	126
Rogue Community College	21	28
Southwestern Ore Comm College	28	28
Treasure Valley Com College	8	7
Umpqua Community College	23	24
Total	779	795

New Undergraduate Transfers from OUS Institutions		
	2011	2012
Eastern Oregon University	8	6
Oregon Inst of Technology	14	13
Portland State University	36	34
Southern Oregon University	17	15
University of Oregon	31	39
Western Oregon University	20	30
Total	126	137

New Undergraduate Transfers from Oregon Private Institutions		
	2011	2012
Art Institute of Portland		1
Cascade College	1	
Concordia University	3	3
Corban University	5	1
George Fox University	1	7
Lewis and Clark College	2	2
Linfield College	4	5
Marylhurst University	1	
Multnomah University		1
Northwest Christian University	2	1
Pacific University	3	4
Reed College	1	
University of Portland	3	2
Warner Pacific College	1	5
Willamette University	3	1
Total	30	33

Student Enrollment By Academic Unit and Student Class Standing

Academic Unit	Freshman	Sophomore	Junior	Senior	Post Bac	Non-Degree Undergrad	Undergrad Total	Master	Doctorate	Non-Degree Grad	Grad Total	First Professional	TOTAL
AG	293	349	492	637	145	30	1,946	178	132	28	338	-	2,284
BUS	609	629	793	835	23	145	3,034	154	23	91	268	-	3,302
EOAS	62	76	138	224	35	-	535	69	91	47	207	-	742
ED	-	-	-	-	13	-	13	168	166	-	334	-	347
ENGR	1,283	1,065	1,005	1,331	183	82	4,949	468	366	124	958	-	5,907
FOR	83	127	208	326	52	15	811	120	43	12	175	-	986
LA	463	635	1,028	1,203	76	70	3,475	179	26	-	205	-	3,680
PHARM	-	-	-	-	-	-	-	2	24	-	26	365	391
PHHS	548	608	814	990	35	12	3,007	155	99	6	260	-	3,267
SCI	783	651	624	734	76	185	3,053	83	264	6	353	-	3,406
VM	-	-	-	-	-	-	-	15	-	-	15	223	238
GRAD	-	-	-	-	-	-	-	156	112	586	854	-	854
UESP	516	218	63	21	-	171	989	-	-	-	-	-	989
Total 2012	4,640	4,358	5,165	6,301	638	710	21,812	1,747	1,346	900	3,993	588	26,393
Total 2011	4,718	4,268	4,622	5,893	536	584	20,621	1,693	1,308	775	3,776	580	24,977

By Academic Unit, Gender, and Student Level

Academic Unit	Undergraduate				Graduate				First Professional				Total	%
	Men	Women	Total	% of Univ.	Men	Women	Total	% of Univ.	Men	Women	Total	% of Univ.		
AG	849	1,097	1,946	7.4%	151	187	338	1.3%	-	-	-	-	2,284	8.7%
BUS	1,652	1,382	3,034	11.5%	122	146	268	1.0%	-	-	-	-	3,302	12.5%
EOAS	256	279	535	2.0%	111	96	207	0.8%	-	-	-	-	742	2.8%
ED	3	10	13	0.0%	100	234	334	1.3%	-	-	-	-	347	1.3%
ENGR	4,214	735	4,949	18.8%	775	183	958	3.6%	-	-	-	-	5,907	22.4%
FOR	518	293	811	3.1%	87	88	175	0.7%	-	-	-	-	986	3.7%
LA	1,552	1,923	3,475	13.2%	76	129	205	0.8%	-	-	-	-	3,680	13.9%
PHARM	-	-	-	0.0%	16	10	26	0.1%	141	224	365	1.4%	391	1.5%
PHHS	779	2,228	3,007	11.4%	76	184	260	1.0%	-	-	-	-	3,267	12.4%
SCI	1,349	1,704	3,053	11.6%	219	134	353	1.3%	-	-	-	-	3,406	12.9%
VM	-	-	-	0.0%	5	10	15	0.1%	33	190	223	0.8%	238	0.9%
GRAD	-	-	-	0.0%	365	489	854	3.2%	-	-	-	-	854	3.2%
UESP	487	502	989	3.7%	-	-	-	0.0%	-	-	-	-	989	3.7%
Total 2012	11,659	10,153	21,812	82.6%	2,103	1,890	3,993	15.1%	174	414	588	2.2%	26,393	100.0%
Total 2011	10,907	9,714	20,621	82.6%	1,986	1,790	3,776	15.1%	185	395	580	2.3%	24,977	100.0%

Enrollment by Major

The Enrollment by Major includes duplicate headcount totals for Colleges and the University. Included in the totals are students who have indicated a dual major or double degree program; e.g., Primary Major 1, Primary Major 2, Secondary Major 1, and Secondary Major 2; e.g., a first professional student could also have a secondary undergraduate major. INTO Pathway students are included.

ACADEMIC UNIT	UNDER-GRAD	GRAD	TOTAL
<u>College of Agricultural Sciences</u>			
Agricultural and Resource Economics	-	2	2
Agricultural Business Management	116	-	116
Agricultural Education	-	7	7
Agricultural Sciences	191	1	192
Animal Science	-	15	15
Animal Sciences	438	-	438
Applied Systematics in Botany	-	2	2
Bioresource Research	62	1	63
Botany	53	1	54
Botany and Plant Pathology	-	28	28
Crop and Soil Science	48	-	48
Crop Science	-	17	17
Entomology	-	3	3
Environmental Economics and Policy	59	-	59
Fisheries and Wildlife	421	-	421
Fisheries and Wildlife Administration	-	1	1
Fisheries and Wildlife Sciences	155	-	155
Fisheries Management	-	31	31
Fisheries Science	-	54	54
Food Science and Technology	195	41	236
General Agriculture	21	1	22
Horticulture	200	37	237
International Studies	8	-	8
Rangeland Ecology and Management	22	7	29
Soil Science	-	24	24
Toxicology	-	29	29
Wildlife Science	-	49	49
Non-Degree Agricultural Sciences	30	1	31
TOTAL	2,019	352	2,371

College of Business

Accountancy	187	-	187
Accounting	4	-	4
Apparel Design	100	-	100
Business Administration	148	140	288
Business Administration and Accountancy	-	8	8
Business Information Systems	77	-	77

ACADEMIC UNIT	UNDER-GRAD	GRAD	TOTAL
<u>College of Business (Cont.)</u>			
Design and Human Environment	-	36	36
Finance	195	2	197
Graphic Design	43	-	43
Housing Studies	7	-	7
Interior Design	100	-	100
International Studies	7	-	7
Management	132	-	132
Marketing	148	1	149
Merchandising Management	298	-	298
Pre-Apparel	55	-	55
Pre-Business	1,462	-	1,462
Pre-Graphic Design	80	-	80
Pre-Interiors	40	1	41
Pre-MBA	-	91	91
Non-Degree Business	46	-	46
Undecided Business Administration	189	-	189
TOTAL	3,318	279	3,597

College of Earth, Ocean, and Atmospheric Sciences

Earth Sciences	94	-	94
Environmental Sciences	362	-	362
Geographic Information Science	-	46	46
Geography	42	31	73
Geology	46	36	82
Geophysics	-	2	2
International Studies	2	-	2
Marine Resource Management	-	26	26
Ocean, Earth and Atmospheric Sciences	-	35	35
Oceanography	-	31	31
Water Conflict Management and Transformation	-	5	5
TOTAL	546	212	758

College of Education

Adult Education	-	25	25
College Student Services Administration	-	47	47
Counseling	-	60	60
Education	119	114	233
Mathematics Education	-	42	42
Pre-Education	615	1	616
Science Education	-	43	43
Teaching: Music Education	-	5	5
TOTAL	734	337	1,071

ACADEMIC UNIT	UNDER-GRAD	GRAD	TOTAL	ACADEMIC UNIT	UNDER-GRAD	GRAD	TOTAL
<u>College of Engineering</u>				<u>College of Forestry (Cont.)</u>			
Bioengineering	54	-	54	Sustainable Forest Management	-	20	20
Pre-Bioengineering	153	1	154	Sustainable Natural Resources	-	12	12
Biological and Ecological Engineering	-	12	12	Tourism and Outdoor Leadership	13	-	13
Chemical Engineering	201	99	300	Wood Science	-	18	18
Pre-Chemical Engineering	294	-	294	Wood Science and Technology	2	-	2
Civil Engineering	222	151	373	Non-Degree Forestry	11	1	12
Pre-Civil Engineering	309	-	309	TOTAL	821	186	1,007
Computer Science	342	138	480	<u>Graduate School</u>			
Pre-Computer Science	424	-	424	Applied Biotechnology	-	8	8
Construction Engineering Management	145	4	149	Applied Economics	-	51	51
Pre-Construction Engineering Management	155	-	155	Economics	-	2	2
Ecological Engineering	43	-	43	Environmental Sciences	-	61	61
Pre-Ecological Engineering	42	-	42	Interdisciplinary Studies	-	63	63
Electrical and Computer Engineering	247	214	461	Molecular and Cellular Biology	-	33	33
Pre-Electrical and Computer Engineering	488	-	488	Water Resources Engineering	-	24	24
Pre-Energy Systems Engineering	16	-	16	Water Resources Policy and Management	-	18	18
Engineering Physics	7	-	7	Water Resources Science	-	22	22
Environmental Engineering	34	14	48	Non-Degree Graduate Student	-	591	591
Pre-Environmental Engineering	84	-	84	TOTAL	-	873	873
Pre-General Engineering	224	-	224	<u>College of Liberal Arts</u>			
Industrial Engineering	124	61	185	American Studies	3	-	3
Pre-Industrial Engineering	109	-	109	Anthropology	306	1	307
International Studies	7	-	7	Applied Anthropology	-	53	53
Manufacturing Engineering	89	-	89	Applied Ethics	-	6	6
Pre-Manufacturing Engineering	24	-	24	Applied Visual Arts	68	-	68
Materials Science	-	35	35	Art	38	-	38
Mechanical Engineering	340	115	455	Contemporary Hispanic Studies	-	8	8
Pre-Mechanical Engineering	699	-	699	Creative Writing	-	23	23
Medical Physics	-	9	9	Digital Communication Arts	77	-	77
Nuclear Engineering	78	45	123	Economics	257	-	257
Pre-Nuclear Engineering	99	-	99	English	233	28	261
Ocean Engineering	-	1	1	Ethnic Studies	15	-	15
Radiation Health Physics	22	76	98	French	25	-	25
Pre-Radiation Health Physics	16	-	16	German	31	-	31
Non-Degree Pre-Engineering	23	-	23	History	220	-	220
TOTAL	5,114	975	6,089	History of Science	-	14	14
<u>College of Forestry</u>				International Studies	31	-	31
Forest Ecosystems and Society	-	33	33	Liberal Studies	585	-	585
Forest Engineering	101	7	108	Music	117	-	117
Forest Management	153	-	153	Philosophy	43	1	44
Forest Operations Management	35	-	35	Political Science	242	-	242
Forest Recreation Resources	4	-	4	Pre-Communication	115	-	115
Forest Resources	-	26	26	Psychology	660	2	662
Forest Science	-	26	26	Public Policy	-	69	69
International Studies	2	-	2	Sociology	372	-	372
Natural Resources	412	43	455	Spanish	89	1	90
Recreation Resource Management	44	-	44	Speech Communication	76	-	76
Renew able Materials	44	-	44	Women Studies	43	14	57
				Non-Degree Liberal Arts	70	-	70
				TOTAL	3,716	220	3,936

ACADEMIC UNIT	UNDER-GRAD	GRAD	FIRST PROF	TOTAL
<u>College of Pharmacy</u>				
Pharmacy	-	26	-	26
Pharmacy, Doctor of Pharmacy (4-year)	-	-	365	365
TOTAL	-	26	365	391

ACADEMIC UNIT	UNDER-GRAD	GRAD	FIRST PROF	TOTAL
<u>College of Public Health and Human Sciences</u>				
Athletic Training	60	-	-	60
Pre-Athletic Training	115	-	-	115
Exercise and Sport Science	1,032	52	-	1,084
Health Management and Policy	4	-	-	4
Human Development and Family Sciences	981	-	-	981
Human Development and Family Studies	-	33	-	33
International Studies	3	-	-	3
Nutrition	284	13	-	297
Nutrition and Food Management	1	-	-	1
Pre-Public Health	133	-	-	133
Public Health	451	172	-	623
Non-Degree Health and Human Sciences	10	-	-	10
Non-Degree Public Health and Human Sciences	2	-	-	2
TOTAL	3,076	270	0	3,346

ACADEMIC UNIT	UNDER-GRAD	GRAD	FIRST PROF	TOTAL
<u>College of Science</u>				
Applied Physics	-	1	-	1
Biochemistry and Biophysics	187	25	-	212
Biology	824	2	-	826
Chemistry	216	102	-	318
Computational Physics	1	-	-	1
General Science	908	-	-	908
International Studies	22	-	-	22
Management for Science Professionals	-	3	-	3
Mathematics	155	68	-	223
Microbiology	269	38	-	307
Physics	121	39	-	160
Statistics	-	48	-	48
Zoology	283	44	-	327
Non-Degree Science	175	2	-	177
Undecided Science Major	2	-	-	2
TOTAL	3,163	372	-	3,535

ACADEMIC UNIT	UNDER-GRAD	GRAD	FIRST PROF	TOTAL
<u>College of Veterinary Medicine</u>				
Veterinary Medicine - DVM	-	-	223	223
Veterinary Science	-	15	-	15
TOTAL	-	15	223	238

ACADEMIC UNIT	UNDER-GRAD	GRAD	FIRST PROF	TOTAL
<u>University Exploratory Studies</u>				
	990	-	-	990
<u>University Honors College³</u>				
Honors Scholar and Honors Associate	848	-	-	848
International Studies	2	-	-	2
TOTAL	850	-	-	850

³Honors Scholars and Honors Associates are not counted in the University total.

ACADEMIC UNIT	UNDER-GRAD	GRAD	FIRST-PROF	TOTAL
TOTAL UNIVERSITY	23,499	4,117	588	28,204

Degree Programs with the Highest Enrollment (Last Year's Rank)

Undergraduate

1. Business Administration* (1)	1,610
2. Mechanical Engineering* (6)	1,039
3. Exercise and Sport Science (4)	1,032
4. Human Development and Family Sciences (5)	981
5. General Science (3)	908
6. Biology (7)	824
7. Computer Science* (12)	766
8. Electrical and Computer Engineering* (10)	735
9. Education* (2)	734
10. Psychology (9)	660

*Includes Pre-Professional

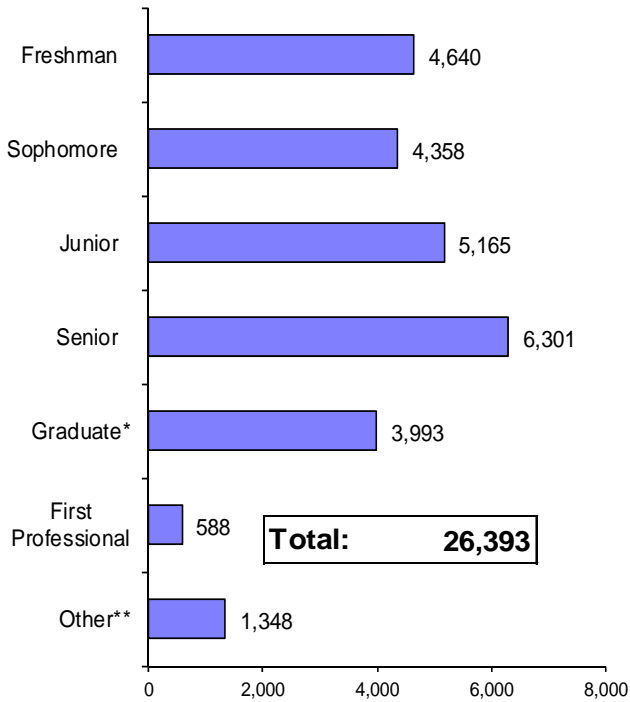
Graduate

1. Electrical and Computer Engineering (2)	214
2. Public Health (3)	172
3. Civil Engineering (5)	151
4. Business Administration (1)	140
5. Computer Science (6)	138
6. Education (4)	115
6. Mechanical Engineering (7)	115
8. Chemistry (8)	102
9. Chemical Engineering (9)	99
10. Pre-MBA ()	91

First Professional

1. Pharmacy, Doctor of Pharmacy (4-year)	365
2. Veterinary Medicine - DVM	223

Headcount Enrollment by Class Standing



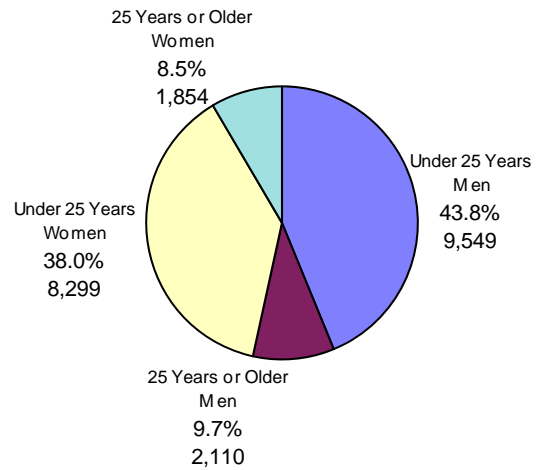
*Includes Non-Degree Graduate Students.

**Includes Non-Degree Undergraduate and Post-Baccalaureate Students.

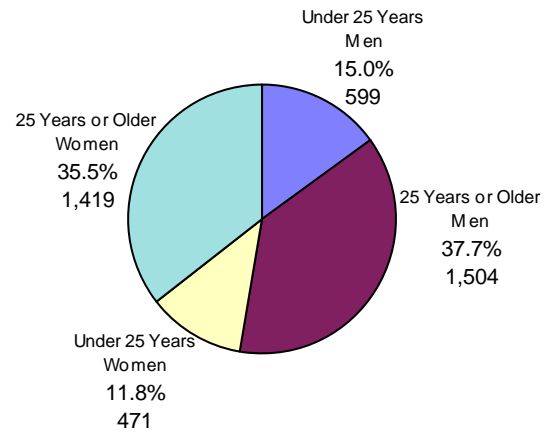
Student Enrollment, Credit Hours, and FTE by Class Standing

Class Standing	Student Enrollment	Student Credit Hours	Student FTE
Freshman	4,640	62,934	4,195.6
Sophomore	4,358	58,061	3,870.7
Junior	5,165	67,997	4,533.1
Senior	6,301	80,175	5,345.0
Post Baccalaureate	638	5,651	376.7
Non-Degree Undergrad	710	5,895	393.0
Total for Undergraduate	21,812	280,713	18,714.2
Masters	1,747	19,287	1,607.2
Doctoral	1,346	16,328	1,814.2
Non-Degree Graduate	900	5,924	493.7
Total for Graduate	3,993	41,539	3,915.1
Doctor of Pharmacy	365	5,830	485.8
Veterinary Medicine	223	4,161	346.8
Total for First Professional	588	9,991	832.6
GRAND TOTAL	26,393	332,243	23,461.9

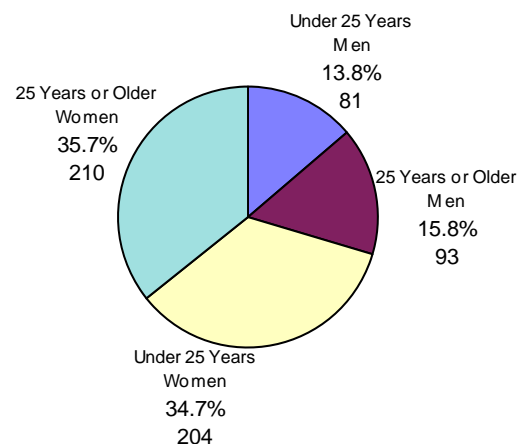
Age of Students Undergraduate



Graduate

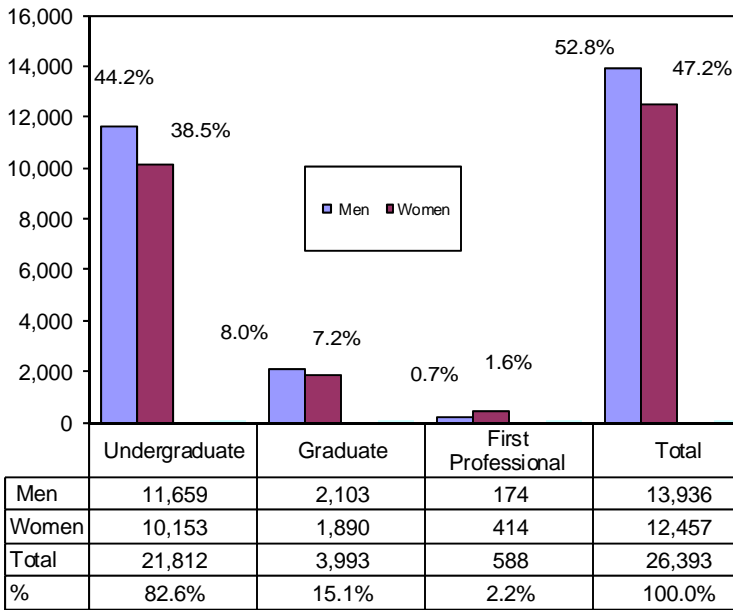


First Professional

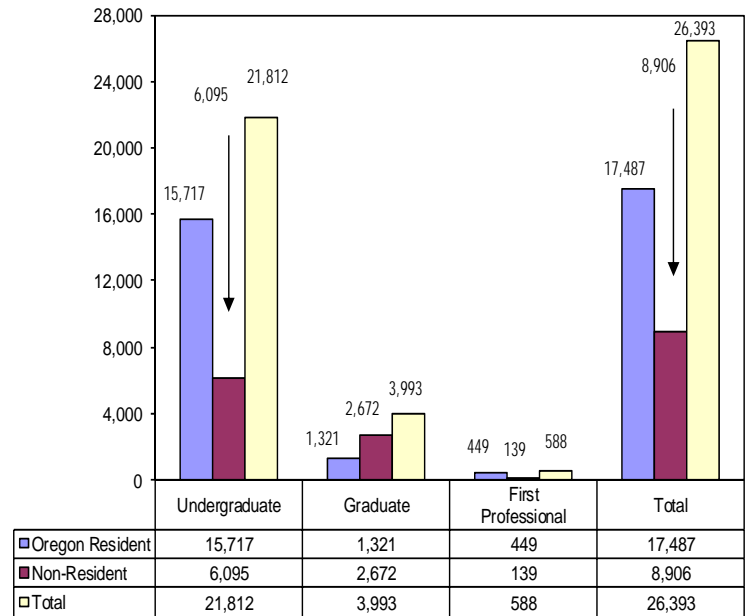


Youngest: 13 years • Oldest: 76 years

Enrollment by Gender and Student Level

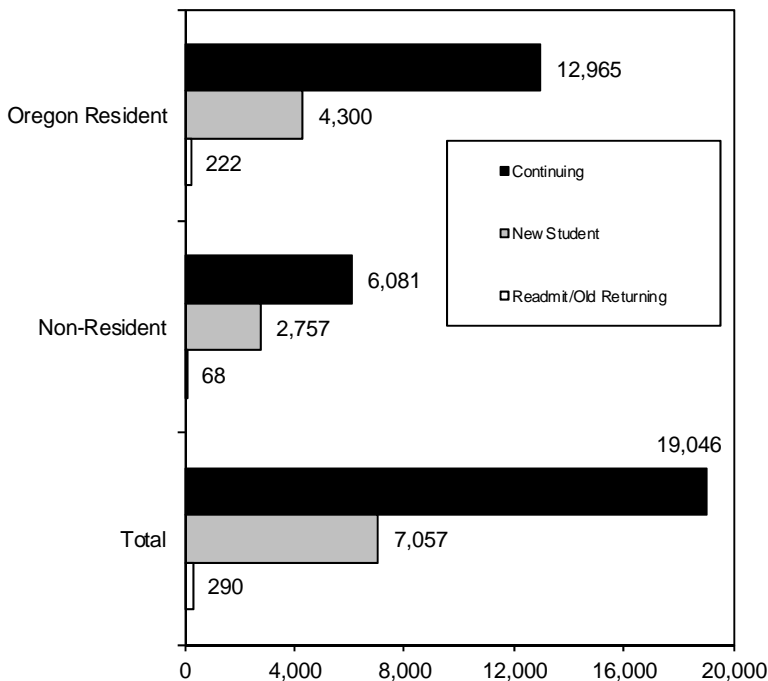


By Residency* and Student Level

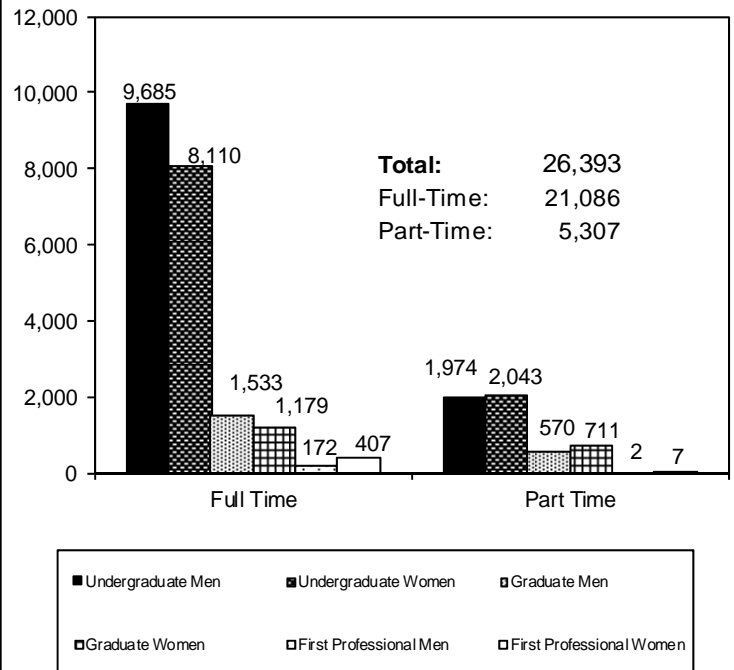


* Residency is based upon tuition and fee status.

All Students by Residency* and Status



Student Enrollment Full Time and Part Time, by Gender



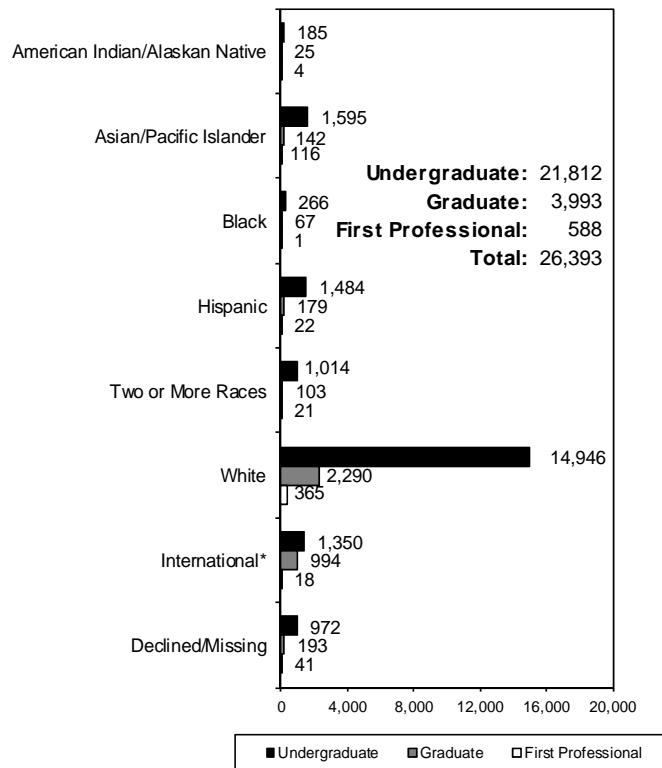
* Residency is based upon tuition and fee status.

Minority Enrollment

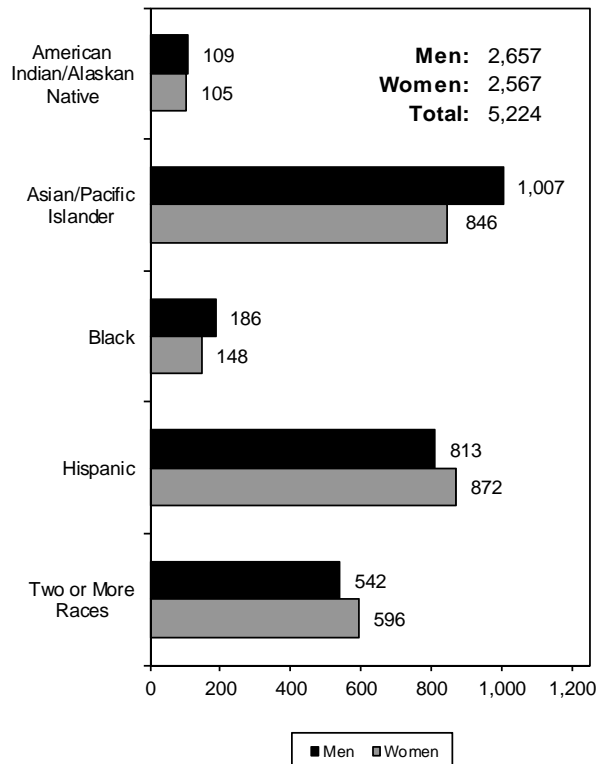
U.S. Minorities by Academic Unit and Student Level

Academic Unit	American Indian/ Native American				Asian/ Pacific Islander				Black				Hispanic				Two or More Races				TOTAL			
	Under-Grad	Grad	First Prof.	Total	Under-Grad	Grad	First Prof.	Total	Under-Grad	Grad	First Prof.	Total	Under-Grad	Grad	First Prof.	Total	Under-Grad	Grad	First Prof.	Total	Under-Grad	Grad	First Prof.	Total
Ag. Sciences	24	4	-	28	38	9	-	47	12	4	-	16	119	24	-	143	91	3	-	94	284	44	-	328
Business	24	-	-	24	200	7	-	207	39	1	-	40	201	7	-	208	106	2	-	108	570	17	-	587
Earth, Ocean, and Atmos_ Sci	2	-	-	2	22	6	-	28	2	1	-	3	30	10	-	40	26	5	-	31	82	22	-	104
Education	-	6	-	6	-	20	-	20	-	14	-	14	-	35	-	35	1	11	-	12	1	86	-	87
Engineering	23	2	-	25	418	28	-	446	39	5	-	44	274	16	-	290	215	17	-	232	969	68	-	1,037
Forestry	13	-	-	13	12	3	-	15	1	2	-	3	26	4	-	30	26	4	-	30	78	13	-	91
Graduate School	-	7	-	7	-	36	-	36	-	26	-	26	-	41	-	41	-	33	-	33	-	143	-	143
Liberal Arts	40	3	-	43	138	3	-	141	71	3	-	74	280	19	-	299	169	10	-	179	698	38	-	736
Pharmacy	-	-	1	1	-	1	106	107	-	-	1	1	-	-	16	16	-	-	19	19	-	1	143	144
Public Health and Human Sci	31	2	-	33	209	12	-	221	37	5	-	42	254	14	-	268	146	12	-	158	677	45	-	722
Science	19	1	-	20	499	17	-	516	46	4	-	50	223	8	-	231	163	6	-	169	950	36	-	986
Univ. Explor. Studies	9	-	-	9	59	-	-	59	19	-	-	19	77	-	-	77	71	-	-	71	235	-	-	235
Vet. Medicine	-	-	3	3	-	-	10	10	-	2	-	2	-	1	6	7	-	-	2	2	-	3	21	24
Total	185	25	4	214	1,595	142	116	1,853	266	67	1	334	1,484	179	22	1,685	1,014	103	21	1,138	4,544	516	164	5,224

Ethnicity — All Students — by Level

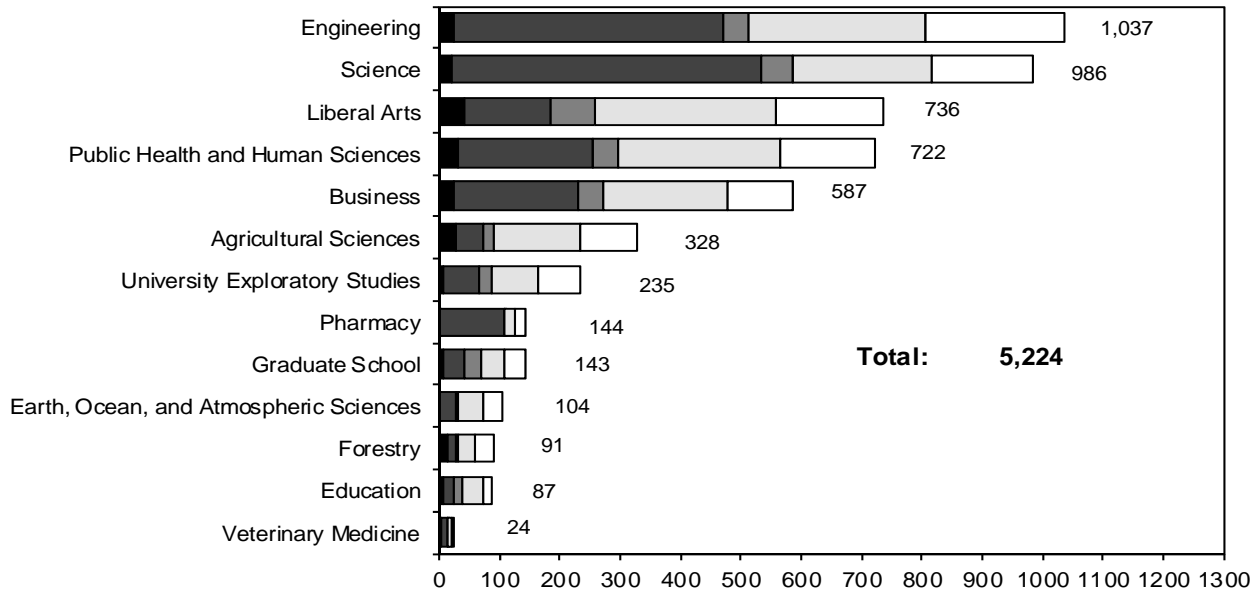


U.S. Minorities by Gender



*International students are identified by citizenship code.

U.S Minorities by Academic Unit

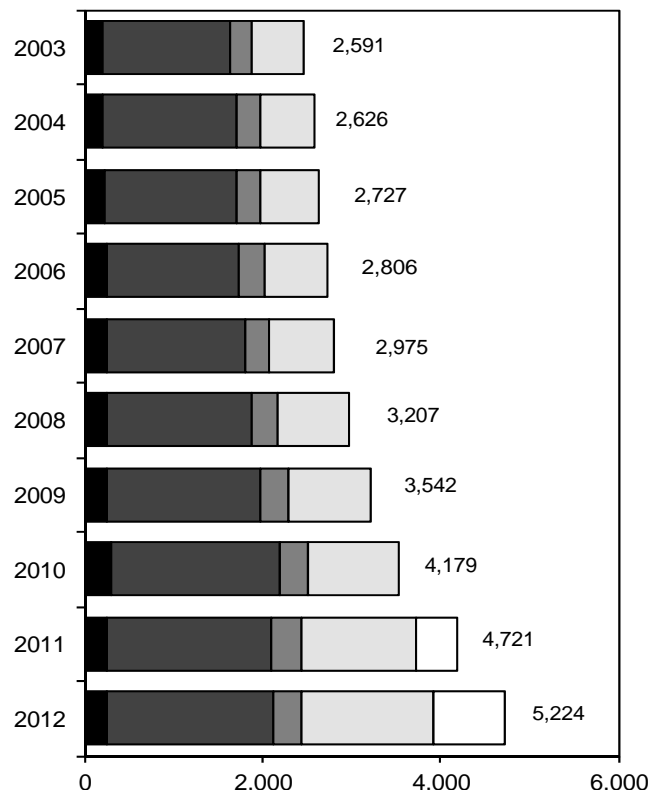


■ American Indian/Alaskan Native ■ Asian/Pacific Islander ■ Black □ Hispanic □ Two or More Races

Minority Enrollment by Gender by Academic Unit

	Men	Women	Total
Agricultural Sciences	131	197	328
Business	321	266	587
Earth, Ocean, & Atmospheric Sciences	42	62	104
Education	29	58	87
Engineering	842	195	1,037
Forestry	48	43	91
Graduate School	55	88	143
Liberal Arts	350	386	736
Pharmacy	52	92	144
Public Health & Human Sciences	222	500	722
Science	435	551	986
Univ. Explor. Studies	126	109	235
Veterinary Medicine	4	20	24
Total	2,657	2,567	5,224

Minority Enrollment Ten-Year Comparison



■ American Indian/Alaskan Native ■ Asian/Pacific Islander ■ Black □ Hispanic □ Two or More Races

Minority Enrollment 2008 - 2012

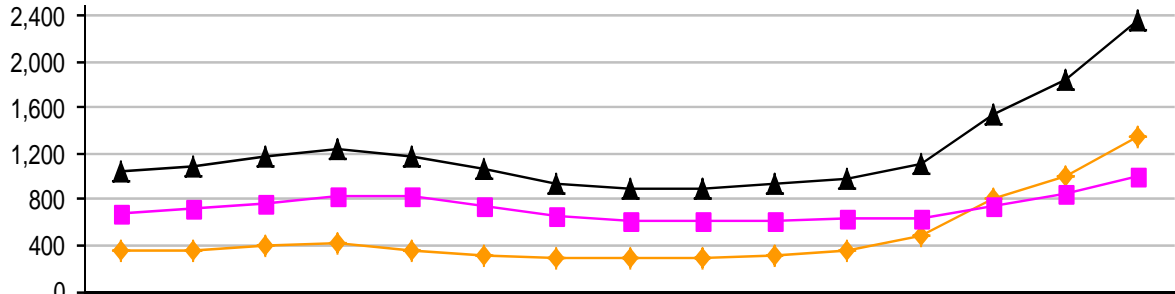
	2008	2009	2010	2011	2012
American Indian/Alaskan Native	256	292	255	248	214
Asian/Pacific Islander	1,719	1,905	1,856	1,882	1,853
Black	321	321	325	303	334
Hispanic	911	1,024	1,292	1,483	1,685
Two or More Races			451	805	1,138
TOTAL	3,207	3,542	4,179	4,721	5,224
% change	7.8%	10.4%	18.0%	13.0%	10.7%

Enrollment by Geographic Origin

Oregon Counties		Foreign Countries*	
Baker	37	Afghanistan	1
Benton	1,761	Albania	2
Clackamas	2,168	Albania	2
Clatsop	151	Argentina	2
Columbia	139	Armenia	2
Coos	211	Australia	16
Crook	45	Austria	5
Curry	64	Bangladesh	14
Deschutes	757	Bolivia	1
Douglas	337	Brazil	25
Gilliam	7	Burma	2
Grant	22	Cambodia	2
Harney	33	Canada	46
Hood River	109	Chile	6
Jackson	498	China, Peoples Republic Of	933
Jefferson	61	Colombia	6
Josephine	251	Congo	1
Klamath	206	Costa Rica	1
Lake	46	Cyprus	1
Lane	1,344	Czech Republic	2
Lincoln	212	Denmark	14
Linn	925	Ecuador	9
Malheur	69	Egypt	4
Marion	1,401	El Salvador	1
Morrow	47	Eritrea	1
Multnomah	2,053	Ethiopia	3
Polk	447	Finland	2
Sherman	11	France	10
Tillamook	102	Gabon	1
Umatilla	164	Germany	23
Union	88	Ghana	1
Wallowa	20	Gibraltar	1
Wasco	94	Guatemala	2
Washington	3,035	Hong Kong	28
Wheeler	8	Hungary	1
Yamhill	386	Iceland	1
Total for Oregon	17,309	India	102
United States		Indonesia	55
Alabama	28	Iran	67
Alaska	110	Iraq	8
Arizona	139	Israel	2
Arkansas	17	Japan	39
California	2,024	Jordan	1
Colorado	188	Kazakhstan	2
Connecticut	19	Kazakhstan Invalid Natn code	1
Delaware	8	Kenya	3
District of Columbia	18	Kuwait	56
Florida	112	Lebanon	3
Georgia	73	Libya	15
Hawaii	377	Macau	1
Idaho	191	Malawi	1
Illinois	121	Malaysia	15
Indiana	38	Mali	1
Iowa	38	Mauritius	2
Kansas	22	Mexico	13
Kentucky	30	Mongolia	2
Louisiana	29	Morocco	1
Maine	14	Nepal	8
Maryland	54	Netherlands	2
Massachusetts	55	New Zealand	7
Michigan	76	Nigeria	6
Minnesota	88	Norway	3
		Oman, Sultanate Of	35
		Pakistan	2
		Peru	3
		Philippines	4
		Poland	3
		Portugal	4
		Qatar	30
		Russia	14
		Samoa	2
		Saudi Arabia	286
		Senegal	2
		Serbia	1
		Sierra Leone	1
		Singapore, Republic of	4
		Slovakia	1
		Slovenia	1
		South Africa	5
		South Korea	120
		Spain	4
		Sri Lanka	6
		Sudan	1
		Sweden	3
		Syria	4
		Taiwan, Republic of China	60
		Thailand	59
		Togo	1
		Tunisia	1
		Turkey	8
		Uganda	1
		Ukraine	6
		United Arab Emirates	45
		United Kingdom	22
		Uruguay	2
		Uzbekistan	1
		Venezuela	4
		Vietnam	37
		Zambia	1
		Total for Foreign Countries	2,370
		Unknown	194
		GRAND TOTAL	26,393

*Foreign countries are based upon country of citizenship.

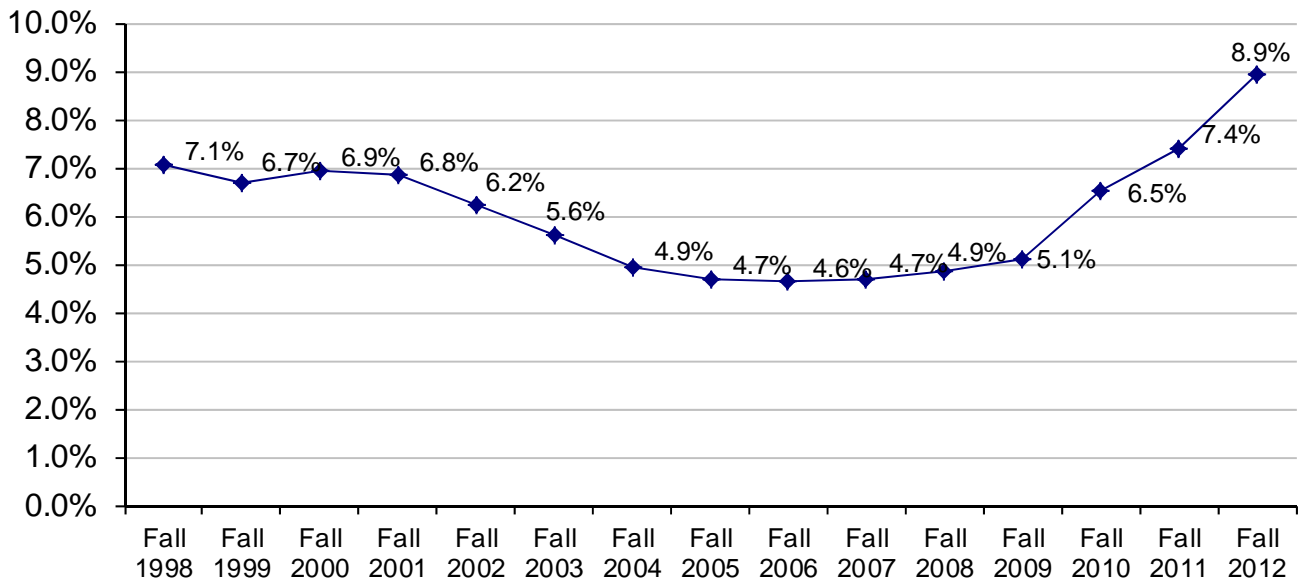
**International* Student Enrollment
Fall Term 1998 to Fall Term 2012**



	Fall 1998	Fall 1999	Fall 2000	Fall 2001	Fall 2002	Fall 2003	Fall 2004	Fall 2005	Fall 2006	Fall 2007	Fall 2008	Fall 2009	Fall 2010	Fall 2011	Fall 2012
—◆— Undergraduate	351	356	395	410	350	311	287	290	293	309	356	493	810	995	1,350
—■— Graduate**	684	723	771	824	819	750	657	614	604	619	632	627	738	857	1,012
—▲— Total	1,035	1,079	1,166	1,234	1,169	1,061	944	904	897	928	988	1,120	1,548	1,852	2,362



**The Percentage of OSU Total Enrollment for International Students
Fall Term 1998 to Fall Term 2012**



*Fall 2008-2009, international students were identified by Admit Type code. Since Fall 2010, international students were identified by citizenship code.

** Includes First Professional Students.

OSU Extended Campus

Enrollment, Credit Hours, and FTE by Class Standing

Students Who Took Courses Through Ecampus*

<u>Class Standing</u>	<u>Student Enrollment</u>	<u>Student Credit Hours</u>	<u>Student FTE</u>
Freshman	546	1,853	123.5
Sophomore	810	3,724	248.3
Junior	1,480	8,273	551.5
Senior	2,112	11,804	786.9
Post Baccalaureate	407	2,690	179.3
Non-Degree Undergrad	387	1,504	100.3
Total for Undergraduate	5,742	29,848	1,989.9
Masters	270	1,086	90.5
Doctoral	161	767	85.2
Non-Degree Graduate	576	2,234	186.2
Total for Graduate	1,007	4,087	361.9
Doctor of Pharmacy	1	4	0.3
Veterinary Medicine	-	-	-
Total for First Professional	1	4	0.3
GRAND TOTAL (Fall 2012)	6,750	33,939	2,352.1
(Fall 2011)	5,564	27,709	1,920.4

*Table indicates students enrolled in courses offered not only through Ecampus, but also courses at OSU-Corvallis.

Enrollment by Class Standing and Residency

Students Who Took Courses Only Through Ecampus**

<u>Class Standing</u>	<u>Oregon Resident</u>	<u>Non-Resident</u>	<u>Total</u>
Freshman	31	47	78
Sophomore	113	117	230
Junior	307	285	592
Senior	445	427	872
Post Baccalaureate	84	220	304
Non-Degree Undergrad	48	269	317
Total for Undergraduate	1,028	1,365	2,393
Masters	72	114	186
Doctoral	63	72	135
Non-Degree Graduate	101	360	461
Total for Graduate	236	546	782
Doctor of Pharmacy	0	0	0
Veterinary Medicine	0	0	0
Total for First Professional	0	0	0
GRAND TOTAL (Fall 2012)	1,264	1,911	3,175
(Fall 2011)	1,087	1,555	2,642

**Table indicates students enrolled in only Ecampus-offered courses; i.e., students are not enrolled in any OSU-Corvallis on-campus courses.

Student Credit Hours by Academic Unit* and Class Standing

<u>Academic Unit*</u>	<u>Freshman</u>	<u>Sophomore</u>	<u>Junior</u>	<u>Senior</u>	<u>Post Bac</u>	<u>Non-Degree Undergrad</u>	<u>Undergrad Total</u>	<u>Master</u>	<u>Doctorate</u>	<u>Non-Degree Grad</u>	<u>Grad Total</u>	<u>First Professional</u>	<u>TOTAL</u>
AG	117	374	1,317	2,489	535	204	5,036	91	7	449	547	-	5,583
BUS	14	120	426	827	32	35	1,454	3	-	11	14	-	1,468
EOAS	53	220	468	672	64	35	1,512	30	-	225	255	-	1,767
ED	-	-	10	25	-	3	38	497	721	61	1,279	-	1,317
ENGR	4	92	148	244	1,196	27	1,711	129	-	56	185	-	1,896
FOR	8	34	140	430	109	19	740	150	3	95	248	-	988
LA	759	1,848	3,853	4,739	447	457	12,103	78	18	322	418	4	12,525
PHARM	14	54	18	16	8	2	112	-	-	6	6	-	118
PHHS	63	305	924	970	25	8	2,295	15	3	96	114	-	2,409
SCI	811	660	937	1,339	261	714	4,722	57	12	898	967	-	5,689
ALS**	10	16	12	26	4	-	68	-	-	-	-	-	68
IP***	-	1	17	22	9	-	49	21	-	6	27	-	76
GRAD	-	-	3	5	-	-	8	15	3	9	27	-	35
Total SCH	1,853	3,724	8,273	11,804	2,690	1,504	29,848	1,086	767	2,234	4,087	4	33,939
Total FTE	123.5	248.3	551.5	786.9	179.3	100.3	1,989.9	90.5	85.2	186.2	361.9	0.3	2,352.1

*Academic Units are those that offered the courses. **Academic Learning Services. ***Interdisciplinary Programs.

OSU Extended Campus Student Enrollment by Academic Unit and Ethnicity

All Students Who Took Courses Through ECampus

Acad. Unit	American Indian /Alaskan Native		Asian /Pacific Islander		Black		Hispanic		Two or More Races		White		International		Declined to Respond / Missing		TOTAL	
	Under-grad	Grad Total	Under-grad	Grad Total	Under-grad	Grad Total	Under-grad	Grad Total	Under-grad	Grad Total	Under-grad	Grad Total	Under-grad	Grad Total	Under-grad	Grad Total	Under-grad	Grad Total
AG	16	- 16	13	2 15	5	1 6	47	6 53	41	- 41	681	35 716	10	5 15	50	2 52	863	51 914
BUS	4	- 4	46	- 46	13	- 13	35	- 35	19	1 20	403	3 406	77	- 77	26	1 27	623	5 628
EOAS	-	- -	11	- 11	2	- 2	12	3 15	12	2 14	163	39 202	-	- -	18	6 24	218	50 268
ED	-	5 5	-	14 14	-	12 12	-	23 23	1	7 8	2	166 168	-	3 3	-	14 14	3	244 247
ENGR	-	1 1	41	1 42	9	2 11	33	1 34	29	3 32	358	42 400	77	6 83	36	5 41	583	61 644
FOR	8	- 8	3	2 5	1	1 2	9	1 10	12	1 13	323	49 372	1	1 2	36	2 38	393	57 450
GRAD	-	5 5	-	24 24	-	22 22	-	26 26	-	22 22	-	356 356	-	18 18	-	36 36	-	509 509
LA	15	- 15	37	- 37	37	- 37	83	1 84	64	- 64	994	7 1,001	21	- 21	87	- 87	1,338	8 1,346
PHARM*	-	- -	-	- -	-	- -	-	- -	-	1 1	-	1 1	-	- -	-	- -	-	2 2
PHHS	13	- 13	41	1 42	13	- 13	58	1 59	34	1 35	630	7 637	11	- 11	40	- 40	840	10 850
SCI	6	- 6	66	- 66	19	- 19	43	1 44	21	3 24	373	7 380	28	- 28	31	- 31	587	11 598
UESP	2	- 2	15	- 15	14	- 14	16	- 16	19	- 19	198	- 198	9	- 9	21	- 21	294	- 294
Total	64	11 75	273	44 317	113	38 151	336	63 399	252	41 293	4,125	712 4,837	234	33 267	345	66 411	5,742	1,008 6,750

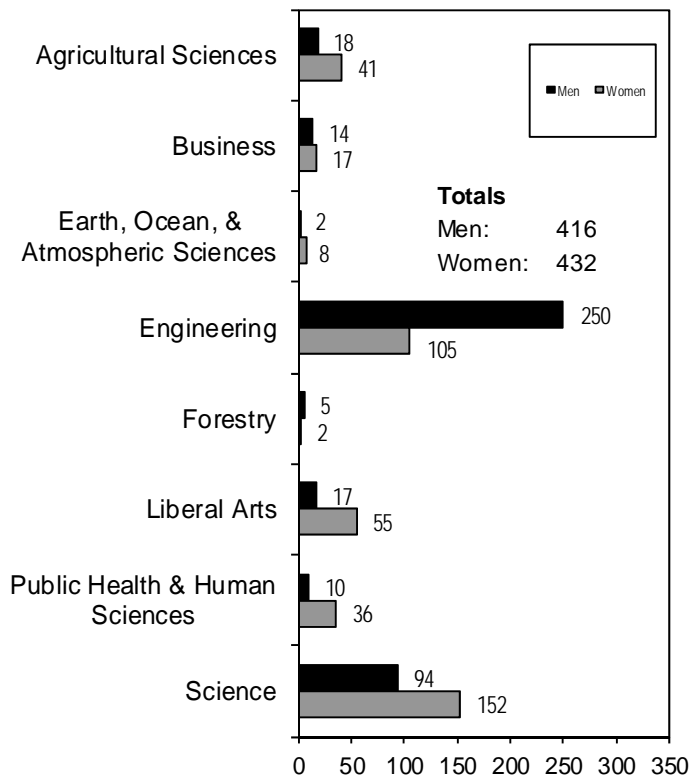
*First Professional students are included in the graduate totals.

University Honors College Students By Academic Unit and Student Class Standing

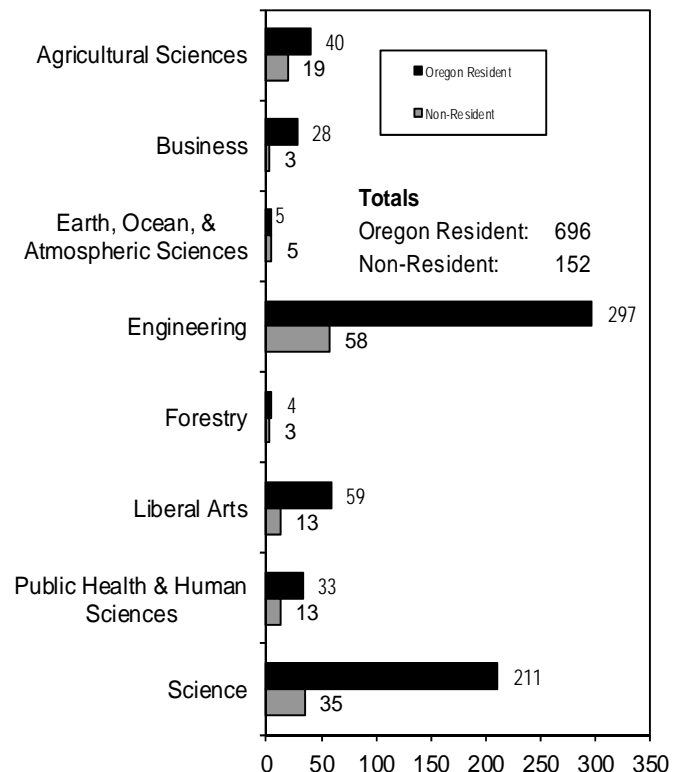
Academic Unit	Freshman	Sophomore	Junior	Senior	Total	% of Undergrad Enrollment for College
Agricultural Sciences	9	13	14	23	59	3.0
Business	1	14	8	8	31	1.0
Earth, Ocean, and Atmospheric Sciences	2	3	1	4	10	1.9
Engineering	62	94	86	113	355	7.2
Forestry	-	2	2	3	7	0.9
Liberal Arts	5	17	21	29	72	2.1
Public Health and Human Sciences	11	11	11	13	46	1.5
Science	43	53	79	71	246	8.1
University Exploratory Studies	16	6	-	-	22	2.2
TOTAL*	149	213	222	264	848	3.9

*The total may include students who are participating in MECOP, Study Abroad, or other experiential learning programs.

By Academic Unit and Gender



By Academic Unit and Residency



Cascades Campus Enrollment

Fall Term 2012				
Enrollment Type		2011	2012	Change
OSU-Cascades Enrollment*	Headcount	764	801	4.8%
	Term FTE	469.1	434.1	-7.5%
COCC Enrolled Students (OSU Admitted)**	Headcount	171	238	39.2%
	Term FTE	126.9	181.1	42.7%
Total Students Receiving Services	Headcount	935	1,039	11.1%
	Term FTE	596.0	615.2	3.2%

Oregon State University - Cascades Campus

	2011		2012		Change	
	Headcount	Percent	Headcount	Percent	Headcount	Percent
Gender						
Female	462	60.5%	483	60.3%	21	4.5%
Male	302	39.5%	318	39.7%	16	5.3%
Full-Time, Part-Time						
Full-Time	279	36.5%	224	28.0%	-55	-19.7%
Part-Time	485	63.5%	577	72.0%	92	19.0%
Level						
Undergraduate	640	83.8%	662	82.6%	22	3.4%
Graduate	124	16.2%	139	17.4%	15	12.1%
Residency						
Oregon Residents	713	93.3%	741	92.5%	28	3.9%
Non-Residents	51	6.7%	60	7.5%	9	17.6%
Level and Age Group						
Undergraduate < 25	250	32.7%	282	35.2%	32	12.8%
Undergraduate 25 and older	390	51.0%	380	47.4%	-10	-2.6%
Graduate 25 and older	114	14.9%	114	14.2%	0	0.0%
Graduate <25	10	1.3%	25	3.1%	15	150.0%
Ethnicity						
American Indian/Alaskan Native	8	1.0%	10	1.2%	2	25.0%
Asian / Pacific Islander	8	1.0%	10	1.2%	2	25.0%
Black	1	0.1%	7	0.9%	6	600.0%
Hispanic	40	5.2%	51	6.4%	11	27.5%
Two or More Races	14	1.8%	32	4.0%	18	128.6%
Total for U.S. Minorities	71	9.3%	110	13.7%	39	54.9%
White	573	75.0%	622	77.7%	49	8.6%
International	0	0.0%	3	0.4%	3	
Declined to Respond / Missing	120	15.7%	66	8.2%	-54	-45.0%
GRAND TOTAL	764	100.0%	801	100.0%	37	4.8%

*Source: Office of Institutional Research, Oregon State University.

**Source: OSU-Cascades.

Oregon State University - Cascades Campus

Class Standing		2011	2012	Change
Freshman	Headcount	7	10	42.9%
	Credit Hours	39	34	-12.8%
	FTE*	2.6	2.3	-12.8%
Sophomore	Headcount	72	86	19.4%
	Credit Hours	458	447	-2.4%
	FTE*	30.5	29.8	-2.4%
Junior	Headcount	220	261	18.6%
	Credit Hours	1,929	1,982	2.7%
	FTE*	128.6	132.1	2.7%
Senior	Headcount	290	260	-10.3%
	Credit Hours	2,892	2,338	-19.2%
	FTE*	192.8	155.9	-19.2%
Postbac Degree Seeking	Headcount	22	21	-4.5%
	Credit Hours	160	108	-32.5%
	FTE*	10.7	7.2	-32.5%
Non-degree Undergraduate	Headcount	29	24	-17.2%
	Credit Hours	140	82	-41.4%
	FTE*	9.3	5.5	-41.4%
Undergraduate Subtotal	Headcount	640	662	3.4%
	Credit Hours	5,618	4,991	-11.2%
	FTE*	374.5	332.7	-11.2%
Masters	Headcount	114	125	9.6%
	Credit Hours	1,092	1,162	6.4%
	FTE*	91.0	96.8	6.4%
Non-Degree Graduate	Headcount	10	14	40.0%
	Credit Hours	43	54	25.6%
	FTE*	3.6	4.5	25.6%
Graduate Subtotal	Headcount	124	139	12.1%
	Credit Hours	1,135	1,216	7.1%
	FTE*	94.6	101.3	7.1%
TOTAL	Headcount	764	801	4.8%
	Credit Hours	6,753	6,207	-8.1%
	FTE*	469.1	434.1	-7.5%

* FTE divisor: Undergraduate, 15 credits; Graduate, 12 credits

INTO Oregon State University
Fall Term 2012 Enrollment

	2011		2012		Change	
	Headcount	Percent	Headcount	Percent	Headcount	Percent
Academic English	366	42.4%	174	16.7%	-192	-52.5%
General English	114	13.2%	94	9.0%	-20	-17.5%
Graduate Pathways	142	16.4%	318	30.5%	176	123.9%
Undergraduate Pathways	242	28.0%	458	43.9%	216	89.3%
Total	864	100.0%	1,044	100.0%	180	20.8%
Female	231	26.7%	288	27.6%	57	24.7%
Male	633	73.3%	756	72.4%	123	19.4%
Total	864	100.0%	1,044	100.0%	180	20.8%
25 and Older	117	13.5%	125	12.0%	8	6.8%
Less than 25	747	86.5%	919	88.0%	172	23.0%
Total	864	100.0%	1,044	100.0%	180	20.8%

Enrollment by Country			College	Major	Headcount
CITIZENSHIP	Headcount	Percent			
Bangladesh	2	0.2%	College of Business	Pre-Business	213
Burma	2	0.2%	College of Business	Pre-Interiors	1
Chad	1	0.1%	College of Business	Pre-MBA	149
China, Peoples Republic of	621	59.5%	College of Engineering	Chemical Engineering	22
Colombia	11	1.1%	College of Engineering	Civil Engineering	11
Germany	1	0.1%	College of Engineering	Computer Science	20
Hong Kong	5	0.5%	College of Engineering	Construction Engineering Management	4
Indonesia	10	1.0%	College of Engineering	Electrical and Computer Engineering	57
Iraq	1	0.1%	College of Engineering	Environmental Engineering	15
Japan	44	4.2%	College of Engineering	Industrial Engineering	9
Kazakhstan	2	0.2%	College of Engineering	Mechanical Engineering	30
Kuwait	7	0.7%	College of Engineering	Pre-Chemical Engineering	12
Libya	1	0.1%	College of Engineering	Pre-Civil Engineering	7
Macau	3	0.3%	College of Engineering	Pre-Computer Science	17
Malaysia	4	0.4%	College of Engineering	Pre-Electrical and Computer Engineering	12
Mauritius	1	0.1%	College of Engineering	Pre-Energy Systems Engineering	2
Mexico	1	0.1%	College of Engineering	Pre-Environmental Engineering	2
Mongolia	1	0.1%	College of Engineering	Pre-General Engineering	82
Qatar	6	0.6%	College of Engineering	Pre-Industrial Engineering	8
Russia	5	0.5%	College of Engineering	Pre-Manufacturing Engineering	1
Saudi Arabia	193	18.5%	College of Engineering	Pre-Mechanical Engineering	18
South Korea	40	3.8%	College of Engineering	Pre-Radiation Health Physics	1
Sultanate Of Oman	40	3.8%	College of Forestry	Forest Engineering	1
Taiwan - Republic of China	19	1.8%	College of Liberal Arts	Art	1
Thailand	8	0.8%	College of Liberal Arts	Economics	1
United Arab Emirates	5	0.5%	College of Liberal Arts	Liberal Studies	1
Vietnam	4	0.4%	College of Liberal Arts	Political Science	1
Unknown	6	0.6%	College of Pharmacy	Pharmacy	1
Total	1,044	100.0%	College of Public Health and Human Sciences	Public Health	1
			College of Science	Chemistry	1
			College of Science	General Science	16
			College of Science	Mathematics	1
			Intensive English Program	Academic English	158
			Intensive English Program	Study Abroad with English	14
			Non-Credit	Academic English	2
			Non-Credit	General English	94
			University Exploratory Study	University Exploratory Studies	58
			Total		1,044

History of Student Enrollment

Fall Term Headcount - 4th Week

Academic Year	Undergraduate	Graduate	First Professional	TOTAL	% CHANGE
1991-92	12,070	2,778	67	14,915	-6.9
1992-93	11,430	2,835	71	14,336	-3.9
1993-94	11,261	2,938	65	14,264	-0.5
1994-95	11,221	3,034	68	14,323	0.4
1995-96	11,280	2,805	76	14,161	-1.1
1996-97	11,019	2,677	88	13,784	-2.7
1997-98	11,382	2,656	89	14,127	2.5
1998-99	11,998	2,539	81	14,618	3.5
1999-00	13,167	2,773	151	16,091	10.1
2000-01	13,772	2,789	227	16,788	4.3
2001-02	14,877	2,868	289	18,034	7.4
2002-03	15,413	3,015	361	18,789	4.2
2003-04	15,599	2,988	392	18,979	1.0
2004-05	15,713	3,000	449	19,162	1.0
2005-06	15,747	2,976	513	19,236	0.4
2006-07	15,829	3,001	532	19,362	0.7
2007-08	16,228	2,994	531	19,753	2.0
2008-09	16,673	3,095	552	20,320	2.9
2009-10	18,067	3,328	574	21,969	8.1
2010-11	19,559	3,618	584	23,761	8.2
2011-12	20,621	3,776	580	24,977	5.1
2012-13	21,812	3,993	588	26,393	5.7

Highlights

- For Fall 2012, total enrollment was 26,393 students.
- When Fall 2011 and Fall 2012 are compared, the total enrollment increased by 1,416 students or 5.7% (from 24,977 to 26,393), the FTE increased by 4.2%, and the Student Credit Hours increased by 4.2%.
- The number of part-time students increased by 11.3% (from 4,767 to 5,307).
- When compared to Fall 2011, the undergraduate enrollment increased by 1,191 students, or 5.8% (from 20,621 to 21,812); the graduate enrollment increased by 5.7% (from 3,776 to 3,993); the first professional enrollment increased by 1.4% (from 580 to 588).
- When compared to Fall 2011, Oregon residents increased by 0.7%; non-resident increased by 16.9%; and international student enrollment increased by 27.5%.
- University Honors College had an enrollment of 848.
- INTO OSU had a total enrollment of 1,044: 174 in Academic English program, 94 INTO OSU General Pathways, 318 INTO OSU Graduate Pathways, and 458 in Undergraduate Pathway program.
- The College of Engineering had the largest student enrollment (5,907) when compared to the other academic units.
- OSU Extended Campus had 6,750 students, an increase of 21.3% compared to 2011. These students took 33,939 credits, of which 36.9% were from the College of Liberal Arts, while 16.8% were from the College of Science.
- The percentage of U.S. minority students was 19.8% of the total enrollment. The number of minority students increased by 10.7% when compared to Fall 2011 (from 4,721 to 5,224).
- Most popular undergraduate majors for Fall 2012 were:

Business Administration	1,610
Mechanical Engineering	1,039
Exercise and Sport Science	1,032
Human Development and Family Sciences	981
General Science	908
- The ratio of Admitted to Applications was 66.3%. The ratio of Enrolled to Admitted was 47.1%.

Source: Fall Term 2012, 4th Week Student Data Extract File.

Comments about this publication are welcome.

Please contact the staff in the Office of Institutional Research, 500 Kerr Administration Building (541-737-9600).