



Enrollment Summary — Fall Term 2011

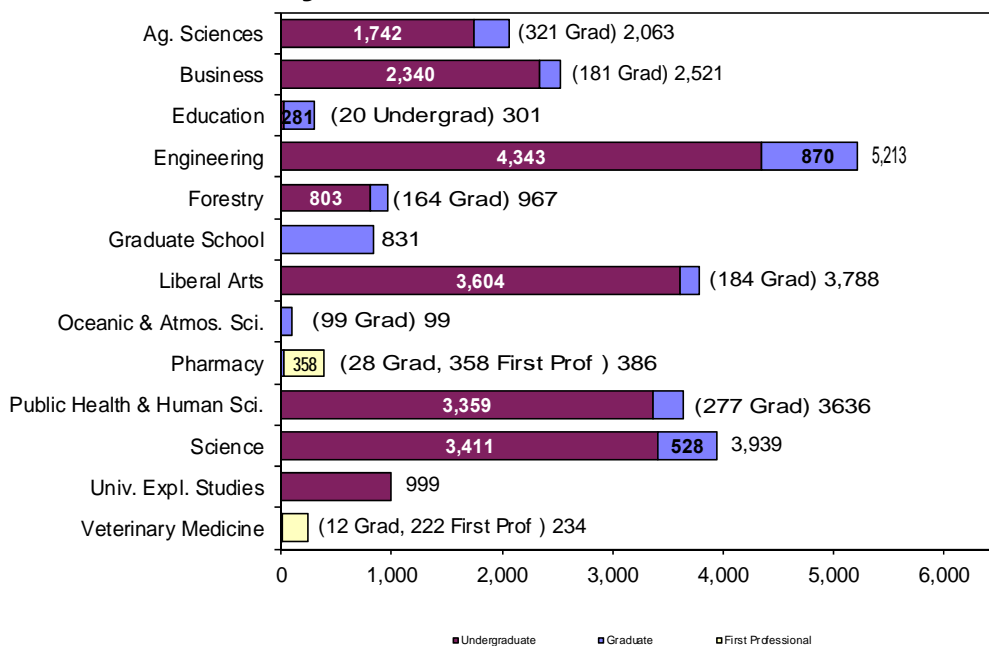
Office of Institutional Research • No. 23 • November 2011 • <http://oregonstate.edu/admin/aa/ir/enrollmentdemographic-reports>

Enrollment at-a-Glance

	2010	2011	Change	% Change	*Fall Term uses the OUS definition, which excludes credit hours and FTE for students who withdrew from courses before the 4th week. Agribusiness credits at EOU are also not included.
Total Enrollment (Headcount)	23,761	24,977	1,216	5.1%	
Total Student FTE *	21,525.0	22,509.0	984.0	4.6%	
Total Student Credit Hours*	304,699	318,743	14,044	4.6%	

	2010		2011		Change	
	Headcount	Percent	Headcount	Percent	Headcount	Percent
Women	11,356	47.8%	11,899	47.6%	543	4.8%
Men	12,405	52.2%	13,078	52.4%	673	5.4%
Full-Time	19,356	81.5%	20,210	80.9%	854	4.4%
Part-Time	4,405	18.5%	4,767	19.1%	362	8.2%
Undergraduate	19,559	82.3%	20,621	82.6%	1,062	5.4%
Graduate	3,618	15.2%	3,776	15.1%	158	4.4%
First Professional	584	2.5%	580	2.3%	-4	-0.7%
U.S. Minorities	4,179	17.6%	4,721	18.9%	542	13.0%
Oregon Residents Total	17,178	72.3%	17,360	69.5%	182	1.1%
Undergraduate	15,260	64.2%	15,526	62.2%	266	1.7%
Graduate	1,463	6.2%	1,388	5.6%	-75	-5.1%
First Professional	455	1.9%	446	1.8%	-9	-2.0%
Non-Residents Total	6,583	27.7%	7,617	30.5%	1,034	15.7%
Undergraduate	4,299	18.1%	5,095	20.4%	796	18.5%
Graduate	2,155	9.1%	2,388	9.6%	233	10.8%
First Professional	129	0.5%	134	0.5%	5	3.9%
International	1,548	6.5%	1,852	7.4%	304	19.6%
Undergrad < 25	16,508	69.5%	17,164	68.7%	656	4.0%
Undergrad 25 and Older	3,051	12.8%	3,457	13.8%	406	13.3%
Graduate < 25	884	3.7%	995	4.0%	111	12.6%
Graduate 25 and Older	2,734	11.5%	2,781	11.1%	47	1.7%
First Professional < 25	272	1.1%	268	1.1%	-4	-1.5%
First Professional 25 and Older	312	1.3%	312	1.2%	0	0.0%

Enrollment by Academic Unit* and Student Level



Index

	Page
Academic Unit	1-2, 4-7, 10-11, 14-16
Admissions	2
Age	8
Class Standing	4, 8, 14-16
Extended Campus	14-15
Freshman GPA, SAT, ACT	2
Full Time, Part Time	1, 9
Gender	1-2, 4, 8-11, 16
Geographic Origin	12
Highlights	20
History of Enrollment.....	20
Honors College	16
International	1, 13
INTO-OSU	19
Major.....	5-7
New Students	2-3
OSU-Cascades Campus.....	17-18
Residency	1, 9, 14, 16
Undergrad/Grad/First Prof....	1-10, 13
U.S Minorities	10-11

*Unduplicated headcount based upon student's primary college.

Applications and Admissions Summary

	# of Applications	# of Admitted	Ratio of Admitted to Applications	# of Enrolled*	Ratio of Enrolled to Admitted
Undergraduate	16,171	12,376	76.5%	5,407	43.7%
Graduate	5,475	2,026	37.0%	1,265	62.4%
First Professional**	157	157	100.0%	144	91.7%
Total	21,803	14,559	66.8%	6,816	46.8%

*Fall Term 2011, 4th week Banner Student Data Extract File.

Source: OSU Admission and Orientation Office, SAR3100 on Oct. 23, 2011.

**No complete application data for First Professional students in Banner.

Freshman Entrance GPA, SAT, and ACT Scores

Mean High School GPA

Gender	2006	2007	2008	2009	2010	2011
Male	3.43	3.42	3.44	3.41	3.48	3.49
Female	3.55	3.52	3.52	3.53	3.55	3.57
Both	3.49	3.46	3.48	3.47	3.51	3.53

Mean SAT Verbal Score

Gender	2006	2007	2008	2009	2010	2011
Male	529	530	527	530	533	534
Female	518	521	515	518	522	522
Both	523	526	522	524	528	528

Mean SAT Math Score

Gender	2006	2007	2008	2009	2010	2011
Male	567	569	567	567	571	570
Female	523	524	520	522	525	527
Both	546	548	545	545	548	549

Mean SAT Writing Score

Gender	2006	2007	2008	2009	2010	2011
Male	-	-	496	498	501	505
Female	-	-	507	510	514	518
Both	-	-	501	504	508	512

Mean SAT Composite Score

Gender	2006	2007	2008*	2009*	2010*	2011*
Male	1,096	1,099	1,591	1,594	1,605	1,601
Female	1,041	1,045	1,543	1,549	1,560	1,559
Both	1,069	1,074	1,568	1,572	1,583	1,580

*Includes SAT Writing Score.

Mean ACT English Score

Gender	2006	2007	2008	2009	2010	2011
Male	21.7	21.8	21.7	22.4	22.3	22.7
Female	22.4	22.3	22.0	22.4	22.4	22.7
Both	22.1	22.0	21.9	22.4	22.4	22.7

Mean ACT Math Score

Gender	2006	2007	2008	2009	2010	2011
Male	24.7	24.8	24.4	25.0	25.3	25.1
Female	22.3	22.4	22.3	22.5	22.7	22.6
Both	23.4	23.6	23.4	23.7	24.0	23.9

Mean ACT Composite Score

Gender	2006	2007	2008	2009	2010	2011
Male	23.5	23.4	23.5	24.2	24.1	24.1
Female	22.9	22.6	22.4	22.7	22.9	22.9
Both	23.2	23.0	23.0	23.5	23.5	23.5

New Students by Academic Unit

	New Students	Percent for Unit
Agricultural Sciences	541	26.2
Business	622	24.7
Education	59	19.6
Engineering	1,501	28.8
Forestry	180	18.6
Graduate School	421	50.7
Liberal Arts	820	21.6
Oceanic and Atmospheric Sciences	28	28.3
Pharmacy	94	24.4
Public Health and Human Sciences	739	20.3
Science	1,285	32.6
University Exploratory Studies	466	46.6
Veterinary Medicine	60	<u>25.6</u>
Total	6,816	27.3

New Students— Where They Came From

New Undergraduate Students from High School				
	2010	2011	Change	
			Headcount	Percent
Oregon High Schools	2,656	2,524	-132	-5.0%
U.S. High Schools	845	817	-28	-3.3%
International High Schools	106	84	-22	-20.8%
Unknown	17	14	-3	-17.6%
Total	3,624	3,439	-185	-5.1%
New Undergraduate Transfer Students				
Oregon Community Colleges	671	779	108	16.1%
OUS Institutions	118	126	8	6.8%
Oregon Private Institutions	21	30	9	42.9%
Out-of-State Institutions	420	440	20	4.8%
Foreign Country Institutions	15	16	1	6.7%
Unknown	76	31	-45	-59.2%
Total	1,321	1,422	101	7.6%
New Graduate and First Professional				
Masters	601	576	-25	-4.2%
Doctoral	196	210	14	7.1%
PharmD (Doctor of Pharmacy)	92	90	-2	-2.2%
Vet Med (Doctor of Veterinary Medicine)	51	54	3	5.9%
Total	940	930	-10	-1.1%
New Non-Degree and Post Baccalaureate Students				
Total	994	1,025	31	3.1%
Total New Students	6,879	6,816	-63	-0.9%
Re-Admit Students	250	306	56	22.4%
Continuing Students	16,632	17,855	1,223	7.4%
Grand Total	23,761	24,977	1,216	5.1%

New Undergraduate Students from High School			
Top Ten Oregon High Schools by Enrollment (Last Year's Rank)			
1. Tigard Senior High School (5)	68	6. West Linn High School (2)	49
2. Tualatin High School (4)	64	7. Corvallis High School (8)	46
3. Clackamas High School (6)	59	8. Sunset High School (9)	42
4. Southridge High School (1)	57	9. Beaverton High School (7)	40
5. Westview High School (3)	56	10. Crescent Valley High School (12)	40
Top Ten States by Enrollment (Last Year's Rank)			
1. California (1)	327	6. Alaska (7)	16
2. Washington (2)	193	7. Texas (8)	16
3. Hawaii (3)	78	8. Colorado (4)	14
4. Nevada (6)	31	9. Arizona (9)	13
5. Idaho (4)	30	10. Illinois (13)	10

New Undergraduate Transfers from Oregon Community Colleges		
	2010	2011
Blue Mountain Com College	13	8
Central Oregon Com College	32	36
Chemeketa Community College	141	166
Clackamas Community College	49	67
Clatsop Community College	6	16
Klamath Community College	4	3
Lane Community College	62	66
Linn-Benton Community College	123	158
Mt Hood Community College	38	47
Rogue Community College	15	21
Southwestern Ore Comm College	20	28
Treasure Valley Com College	10	8
Umpqua Community College	28	23
Total	671	779

New Undergraduate Transfers from OUS Institutions		
	2010	2011
Eastern Oregon University	6	8
Oregon Inst of Technology	5	14
Portland State University	31	36
Southern Oregon University	13	17
University of Oregon	37	31
Western Oregon University	26	20
Total	118	126

New Undergraduate Transfers from Oregon Private Institutions		
	2010	2011
Cascade College		1
Concordia University	1	3
Corban University	1	5
George Fox University	6	1
Lewis and Clark College		2
Linfield College	3	4
Marylhurst University	1	1
Northwest Christian University		2
Pacific University	2	3
Reed College		1
University of Portland	3	3
Warner Pacific College	1	1
Western States Chiropractic Co	1	
Willamette University	2	3
Total	21	30

New Students from Oregon Counties					
	2010	2011		2010	2011
Baker	5	10	Lake	17	8
Benton	380	394	Lane	391	370
Clackamas	518	551	Lincoln	67	47
Clatsop	38	50	Linn	196	203
Columbia	40	27	Malheur	19	16
Coos	61	62	Marion	345	373
Crook	9	9	Morrow	9	13
Curry	14	12	Multnomah	526	526
Deschutes	182	187	Polk	116	109
Douglas	88	80	Sherman	4	
Gilliam	2	1	Tillamook	30	26
Grant	10	4	Umatilla	49	32
Hamey	9	10	Union	17	22
Hood River	27	23	Wallowa	3	5
Jackson	139	132	Wasco	23	25
Jefferson	14	10	Washington	789	729
Josephine	48	53	Wheeler	2	1
Klamath	57	51	Yamhill	100	103

**Student Enrollment
By Academic Unit and Student Class Standing**

Academic Unit	Freshman	Sophomore	Junior	Senior	Post Bac	Non-Degree Undergrad	Undergrad Total	Master	Doctorate	Non-Degree Grad	Grad Total	First Professional	TOTAL
AG	333	313	420	524	133	19	1,742	174	120	27	321	-	2,063
BUS	520	552	515	612	32	109	2,340	108	-	73	181	-	2,521
ED	-	-	-	1	19	-	20	129	152	-	281	-	301
ENGR	1,172	936	893	1,218	55	69	4,343	460	348	62	870	-	5,213
FOR	88	115	196	327	64	13	803	96	53	15	164	-	967
LA	569	691	937	1,267	77	63	3,604	157	26	1	184	-	3,788
OC	-	-	-	-	-	-	-	45	54	-	99	-	99
PHARM	-	-	-	-	-	-	-	1	27	-	28	358	386
PHHS	616	743	896	1,029	47	28	3,359	158	119	-	277	-	3,636
SCI	872	697	700	899	109	134	3,411	180	300	48	528	-	3,939
VM	-	-	-	-	-	-	-	12	-	-	12	222	234
GRAD	-	-	-	-	-	-	-	173	109	549	831	-	831
UESP	548	221	65	16	-	149	999	-	-	-	-	-	999
Total 2011	4,718	4,268	4,622	5,893	536	584	20,621	1,693	1,308	775	3,776	580	24,977
Total 2010	5,002	3,880	4,206	5,378	517	576	19,559	1,729	1,230	659	3,618	584	23,761

By Academic Unit, Gender, and Student Level

Academic Unit	Undergraduate				Graduate				First Professional				Total	%
	Men	Women	Total	% of Univ.	Men	Women	Total	% of Univ.	Men	Women	Total	% of Univ.		
AG	755	987	1,742	7.0%	153	168	321	1.3%	-	-	-	-	2,063	8.3%
BUS	1,510	830	2,340	9.4%	99	82	181	0.7%	-	-	-	-	2,521	10.1%
ED	3	17	20	0.1%	88	193	281	1.1%	-	-	-	-	301	1.2%
ENGR	3,697	646	4,343	17.4%	709	161	870	3.5%	-	-	-	-	5,213	20.9%
FOR	516	287	803	3.2%	86	78	164	0.7%	-	-	-	-	967	3.9%
LA	1,618	1,986	3,604	14.4%	74	110	184	0.7%	-	-	-	-	3,788	15.2%
OC	-	-	-	0.0%	49	50	99	0.4%	-	-	-	-	99	0.4%
PHARM	-	-	-	0.0%	16	12	28	0.1%	147	211	358	0.0	386	1.5%
PHHS	776	2,583	3,359	13.4%	72	205	277	1.1%	-	-	-	0.0%	3,636	14.6%
SCI	1,499	1,912	3,411	13.7%	287	241	528	2.1%	-	-	-	-	3,939	15.8%
VM	-	-	-	0.0%	4	8	12	0.0%	38	184	222	0.9%	234	0.9%
GRAD	-	-	-	0.0%	349	482	831	3.3%	-	-	-	-	831	3.3%
UESP	533	466	999	4.0%	-	-	-	0.0%	-	-	-	-	999	4.0%
Total 2011	10,907	9,714	20,621	82.6%	1,986	1,790	3,776	15.1%	185	395	580	2.3%	24,977	100.0%
Total 2010	10,348	9,211	19,559	82.3%	1,868	1,750	3,618	15.2%	189	395	584	2.5%	23,761	100.0%

Enrollment by Major

The Enrollment by Major includes duplicate headcount totals for Colleges and the University. Included in the totals are students who have indicated a dual major or double degree program; e.g., Primary Major 1, Primary Major 2, Secondary Major 1, and Secondary Major 2; e.g., a first professional student could also have a secondary undergraduate major. INTO Pathway students are included.

ACADEMIC UNIT	UNDER-GRAD	GRAD	TOTAL
<u>College of Agricultural Sciences</u>			
Agricultural and Resource Economics	-	3	3
Agricultural Business Management	98	-	98
Agricultural Education	-	4	4
Agricultural Sciences	30	-	30
Animal Science	-	21	21
Animal Sciences	479	-	479
Applied Systematics in Botany	-	3	3
Bioresource Research	62	1	63
Botany	47	-	47
Botany and Plant Pathology	-	35	35
Crop Science	-	19	19
Crop Science and Soil Science	40	-	40
Entomology	-	6	6
Environmental Economics and Policy	42	-	42
Fisheries and Wildlife	498	-	498
Fisheries Management	-	27	27
Fisheries Science	-	46	46
Food Science and Technology	188	39	227
General Agriculture	124	-	124
Horticulture	144	30	174
International Studies	3	-	3
Rangeland Ecology and Management	19	8	27
Soil Science	-	19	19
Toxicology	-	27	27
Wildlife Science	-	38	38
Non-Degree Agricultural Sciences	19	2	21
TOTAL	1,793	328	2,121

¹Joint program with CLA, FOR, A.G.

<u>College of Business</u>			
Accountancy	167	1	168
Accounting	16	-	16
Business Administration	217	188	405
Finance	137	-	137
International Studies	5	-	5
Management	105	-	105
Marketing	236	-	236
Pre-Business	1,546	-	1,546
Non-Degree Business	44	-	44
TOTAL	2,473	189	2,662

<u>College of Education</u>			
Adult Education	-	26	26
College Student Services Administration	-	48	48
Counseling	-	63	63
Education	144	135	279
Pre-Education	962	2	964
Teaching: Elementary Education	-	3	3

ACADEMIC UNIT	UNDER-GRAD	GRAD	TOTAL
<u>College of Education (Cont.)</u>			
Teaching: Music Education	-	10	10
TOTAL	1,106	287	1,393

<u>College of Engineering</u>			
Bioengineering	49	-	49
Pre-Bioengineering	137	-	137
Biological and Ecological Engineering	-	15	15
Chemical Engineering	174	96	270
Pre-Chemical Engineering	245	-	245
Civil Engineering	210	135	345
Pre-Civil Engineering	347	-	347
Computer Science	213	131	344
Pre-Computer Science	332	-	332
Construction Engineering Management	144	7	151
Pre-Construction Engineering Management	176	-	176
Ecological Engineering	33	-	33
Pre-Ecological Engineering	54	-	54
Electrical and Computer Engineering	232	184	416
Pre-Electrical and Computer Engineering	360	-	360
Pre-Electrical Engineering	1	-	1
Energy Engineering Management	2	-	2
Pre-Energy Engineering Management	10	-	10
Engineering Physics	9	-	9
Pre-Engineering Physics	2	-	2
Environmental Engineering	30	6	36
Pre-Environmental Engineering	87	-	87
Pre-General Engineering	215	-	215
Industrial Engineering	94	53	147
Pre-Industrial Engineering	104	-	104
International Studies	5	-	5
Manufacturing Engineering	72	-	72
Pre-Manufacturing Engineering	39	-	39
Materials Science	-	36	36
Mechanical Engineering	324	108	432
Pre-Mechanical Engineering	536	-	536
Medical Physics	-	6	6
Nuclear Engineering	73	48	121
Pre-Nuclear Engineering	91	-	91
Ocean Engineering	-	3	3
Radiation Health Physics	13	71	84
Pre-Radiation Health Physics	22	-	22
Non-Degree Pre-Engineering	28	1	29
TOTAL	4,463	900	5,363

ACADEMIC UNIT	UNDER-GRAD	GRAD	TOTAL
<u>College of Forestry</u>			
Forest Ecosystems and Society	-	8	8
Forest Engineering	89	14	103
Forest Management	142	-	142
Forest Operations Management	43	-	43
Forest Resources	-	41	41
Forest Science	-	41	41
International Studies	1	-	1
Natural Resources	422	20	442
Recreation Resource Management	58	-	58
Renew able Materials	24	-	24
Sustainable Forest Management	-	1	1
Sustainable Natural Resources	-	17	17
Tourism and Outdoor Leadership	11	-	11
Wood Science	-	29	29
Wood Science and Technology	6	-	6
Non-Degree Forestry	13	2	15
TOTAL	809	173	982

<u>Graduate School</u>			
Applied Biotechnology	-	7	7
Applied Economics	-	51	51
Economics	-	2	2
Environmental Science	-	60	60
Interdisciplinary Studies	-	69	69
Molecular and Cellular Biology	-	35	35
Water Resources Engineering	-	28	28
Water Resources Policy and Management	-	18	18
Water Resources Science	-	20	20
Non-Degree Graduate Student	-	552	552
TOTAL	-	842	842

<u>College of Liberal Arts</u>			
American Studies	6	-	6
Anthropology	271	-	271
Applied Anthropology	-	49	49
Applied Ethics	-	8	8
Applied Visual Arts	201	-	201
Art	65	-	65
Contemporary Hispanic Studies	-	9	9
Creative Writing	-	20	20
Economics	173	2	175
English	249	27	276
Ethnic Studies	20	-	20
French	30	-	30
German	29	-	29
History	245	-	245
History of Science	-	13	13
International Studies	19	-	19
Language in Culture	1	-	1

ACADEMIC UNIT	UNDER-GRAD	GRAD	TOTAL
<u>College of Liberal Arts (Cont.)</u>			
Liberal Studies	685	1	686
Music	127	-	127
Philosophy	51	-	51
Political Science	262	-	262
Pre-Communication	128	-	128
Psychology	661	-	661
Public Policy	-	63	63
Sociology	317	1	318
Spanish	96	-	96
Speech Communication	108	-	108
Women Studies	31	-	31
Non-Degree Liberal Arts	63	1	64
TOTAL	3,838	194	4,032

<u>College of Oceanic and Atmospheric Sciences</u>			
Atmospheric Sciences	-	3	3
Geophysics	-	3	3
Marine Resource Management	-	26	26
Ocean, Earth and Atmospheric Sciences	-	24	24
Oceanography	-	43	43
TOTAL	-	99	99

<u>College of Public Health and Human Sciences</u>			
Apparel Design	96	-	96
Pre-Apparel	61	-	61
Athletic Training	53	-	53
Pre-Athletic Training	111	-	111
Design and Human Environment	-	39	39
Exercise and Sport Science	959	48	1,007
Gerontology	1	-	1
Health Management and Policy	16	-	16
Health Promotion and Health Behavior	19	-	19
Housing Studies	23	-	23
Human Development and Family Sciences	894	1	895
Human Development and Family Studies	-	37	37
Interior Design	115	1	116
Pre-Interiors	53	-	53
International Studies	1	-	1
Merchandising Management	276	-	276
Movement Studies in Disability	-	2	2
Nutrition	286	15	301
Nutrition and Food Management	1	-	1
Public Health ²	502	147	649
Non-Degree Health and Human Sciences	15	-	15
Non-Degree Public Health and Human Sciences	13	-	13
TOTAL	3,495	290	3,785

² Includes First Professional student(s).

ACADEMIC UNIT	UNDER-GRAD	GRAD	FIRST PROF	TOTAL
<u>College of Pharmacy</u>				
Pharmacy	-	28	-	28
Pharmacy, Doctor of Pharmacy (4-year)	-	-	358	358
TOTAL	-	28	358	386
<u>College of Science</u>				
Biochemistry and Biophysics	181	20	-	201
Biology ²	756	2	-	758
Chemistry ²	195	101	-	296
Computational Physics	3	-	-	3
Earth Science	26	-	-	26
Environmental Science	347	1	-	348
General Science	961	-	-	961
Geographic Information Science	-	38	-	38
Geography	59	27	-	86
Geology	77	33	-	110
International Studies	11	-	-	11
Management for Science Professionals	-	2	-	2
Mathematical Sciences	1	1	-	2
Mathematics	153	66	-	219
Mathematics Education	-	40	-	40
Microbiology	215	40	-	255
Physics	114	42	-	156
Science Education	-	44	-	44
Statistics	-	39	-	39
Water Conflict Management and Transformation	-	5	-	5
Zoology	272	40	-	312
Non-Degree Science	122	4	-	126
Undecided Science Major	8	-	-	8
TOTAL	3,501	545	-	4,046
² Includes First Professional student(s).				
<u>College of Veterinary Medicine</u>				
Veterinary Medicine - DVM	-	-	222	222
Veterinary Science	-	12	-	12
TOTAL	-	12	222	234
<u>University Exploratory Studies</u>				
	1,000	-	-	1,000
<u>University Honors College³</u>				
Honors Scholar and Honors Associate	742	-	-	742
International Studies	1	-	-	1
TOTAL	743	-	-	743
³ Honors Scholars and Honors Associates are not counted in the University total.				
TOTAL UNIVERSITY	22,479	3,887	580	26,946

Degree Programs with the Highest Enrollment (Last Year's Rank)

Undergraduate

1. Business Administration* (1)	1,763
2. Education* (2)	1,106
3. General Science (4)	961
4. Exercise and Sport Science (3)	959
5. Human Development and Family Sciences (6)	894
6. Mechanical Engineering* (5)	860
7. Biology (7)	756
8. Liberal Studies (8)	685
9. Psychology (9)	661
10. Electrical and Computer Engineering* (10)	592

*Includes Pre-Professional

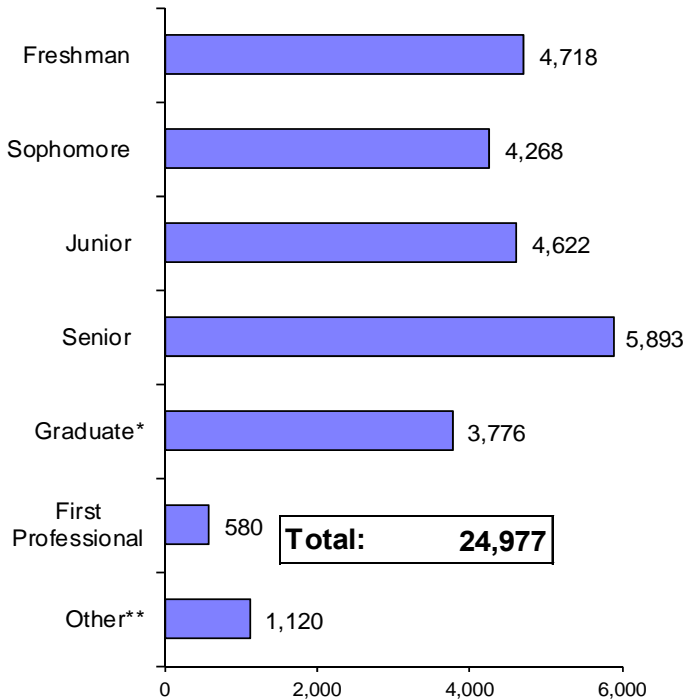
Graduate

1. Business Administration (6)	188
2. Electrical and Computer Engineering (1)	184
3. Public Health (3)	147
4. Education (2)	135
5. Civil Engineering (5)	135
6. Computer Science (4)	131
7. Mechanical Engineering (7)	108
8. Chemistry (8)	101
9. Chemical Engineering (11)	96
10. Radiation Health Physics (9)	71

First Professional

1. Pharmacy, Doctor of Pharmacy (4-year)	358
2. Veterinary Medicine - DVM	222

Headcount Enrollment by Class Standing



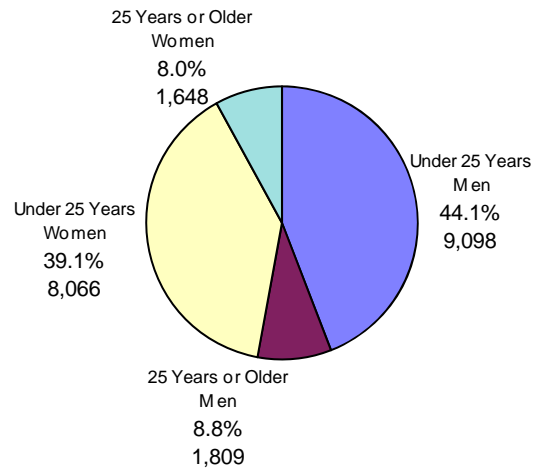
*Includes Non-Degree Graduate Students.

**Includes Non-Degree Undergraduate and Post-Baccalaureate Students.

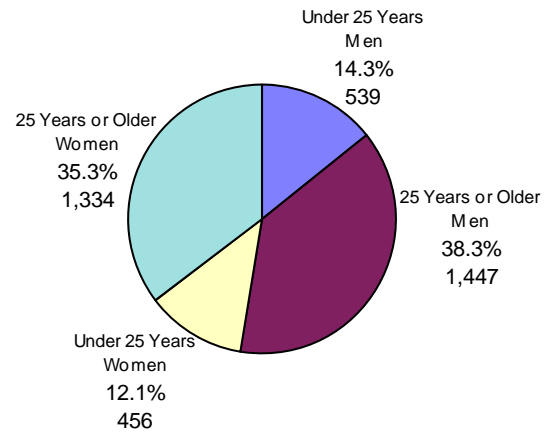
Student Enrollment, Credit Hours, and FTE by Class Standing

Class Standing	Student Enrollment	Student Credit Hours	Student FTE
Freshman	4,718	64,440	4,296.0
Sophomore	4,268	58,163	3,877.5
Junior	4,622	61,902	4,126.8
Senior	5,893	75,358	5,023.9
Post Baccalaureate	536	4,820	321.3
Non-Degree Undergrad	584	4,808	320.5
Total for Undergraduate	20,621	269,491	17,966.1
Masters	1,693	18,632	1,552.7
Doctoral	1,308	15,788	1,754.2
Non-Degree Graduate	775	4,934	411.2
Total for Graduate	3,776	39,354	3,718.1
Doctor of Pharmacy	358	5,732	477.7
Veterinary Medicine	222	4,166	347.2
Total for First Professional	580	9,898	824.8
GRAND TOTAL	24,977	318,743	22,509.0

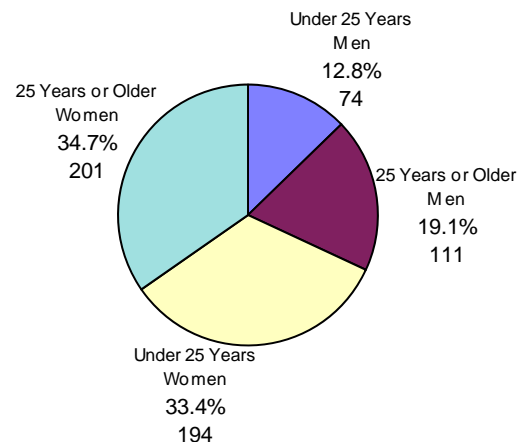
Age of Students Undergraduate



Graduate

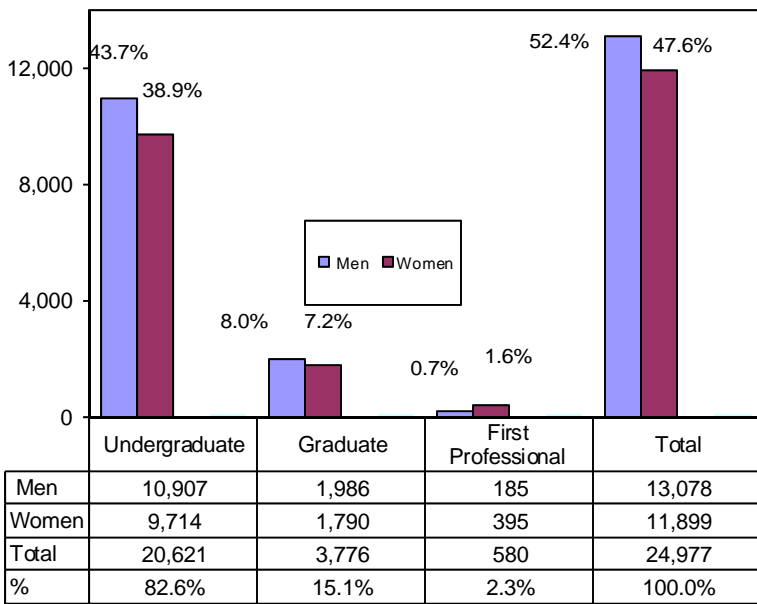


First Professional

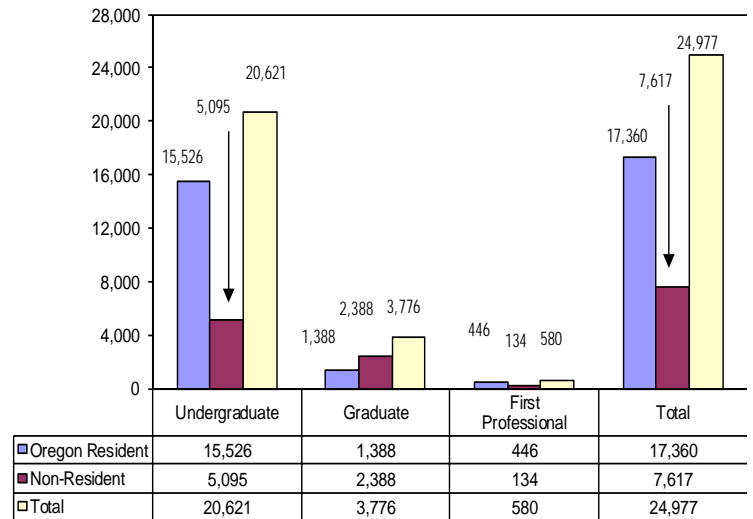


Youngest: 11 years • Oldest: 84 years

Enrollment by Gender and Student Level

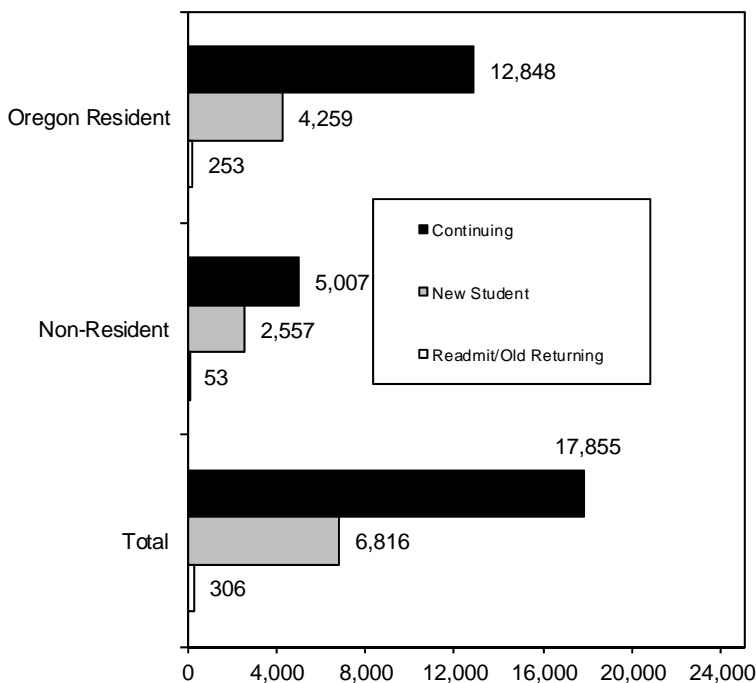


By Residency* and Student Level

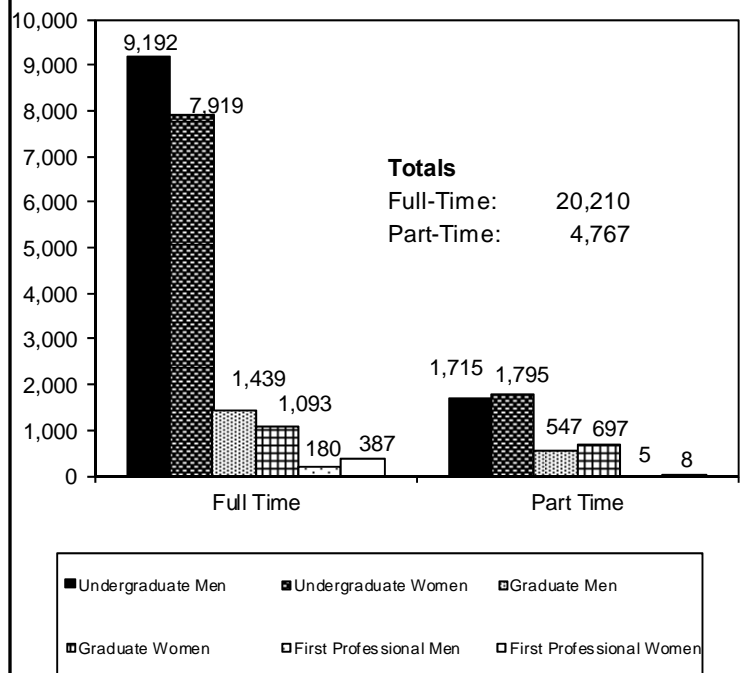


* Residency is based upon tuition and fee status.

All Students by Residency* and Status



Student Enrollment Full Time and Part Time, by Gender



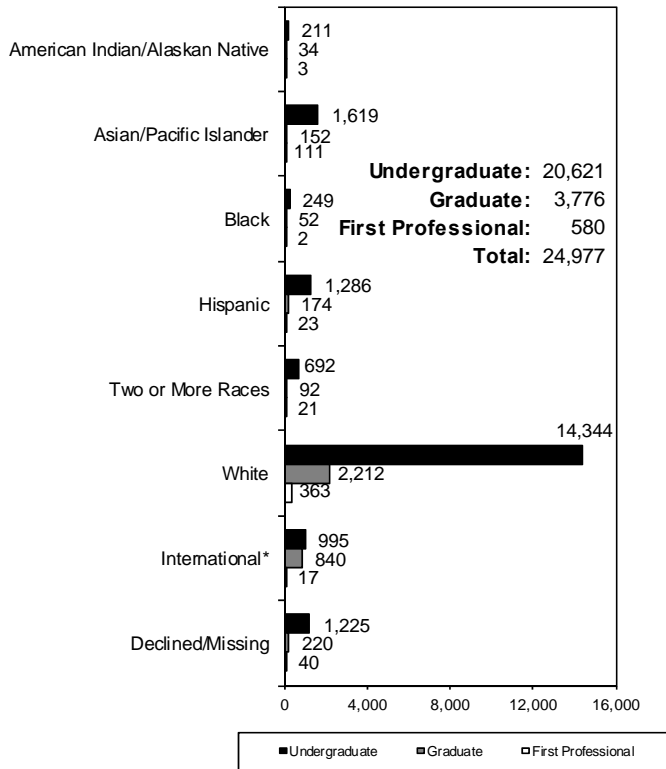
* Residency is based upon tuition and fee status.

Minority Enrollment

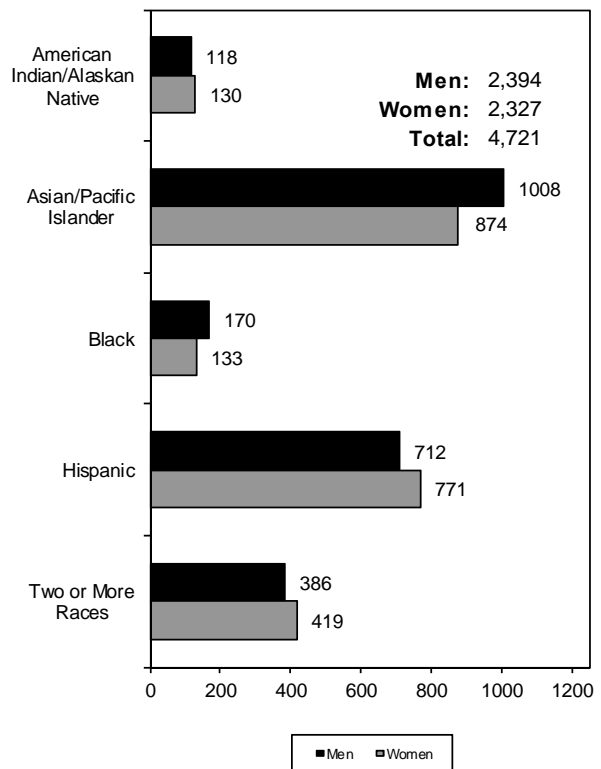
U.S. Minorities by Academic Unit and Student Level

Academic Unit	American Indian/ Native American				Asian/ Pacific Islander				Black				Hispanic				Two or More Races				TOTAL			
	Under- Grad	Grad	First Prof.	Total	Under- Grad	Grad	First Prof.	Total	Under- Grad	Grad	First Prof.	Total	Under- Grad	Grad	First Prof.	Total	Under- Grad	Grad	First Prof.	Total	Under- Grad	Grad	First Prof.	Total
Ag. Sciences	28	3	-	31	39	12	-	51	11	2	-	13	105	23	-	128	63	6	-	69	246	46	-	292
Business	17	1	-	18	184	5	-	189	31	2	-	33	141	4	-	145	62	2	-	64	435	14	-	449
Education	-	6	-	6	4	20	-	24	-	13	-	13	1	27	-	28	1	8	-	9	6	74	-	80
Engineering	29	2	-	31	393	33	-	426	28	6	-	34	205	16	-	221	137	17	-	154	792	74	-	866
Forestry	12	2	-	14	9	3	-	12	4	1	-	5	25	9	-	34	14	1	-	15	64	16	-	80
Graduate School	-	9	-	9	-	36	-	36	-	14	-	14	-	43	-	43	-	32	-	32	-	134	-	134
Liberal Arts	49	2	-	51	170	3	-	173	75	3	-	78	272	14	-	286	110	12	-	122	676	34	-	710
Oceanic and Atmos. Sci.	-	1	-	1	-	2	-	2	-	1	-	1	-	5	-	5	-	2	-	2	-	11	-	11
Pharmacy	-	-	-	-	-	2	101	103	-	-	2	2	-	-	15	15	-	-	17	17	-	2	135	137
Public Health and Human Sci	33	3	-	36	261	13	-	274	38	6	-	44	228	14	-	242	101	6	-	107	661	42	-	703
Science	31	5	-	36	503	23	-	526	42	2	-	44	233	19	-	252	143	6	-	149	952	55	-	1,007
Univ. Explor. Studies	12	-	-	12	56	-	-	56	20	-	-	20	76	-	-	76	61	-	-	61	225	-	-	225
Vet. Medicine	-	-	3	3	-	-	10	10	-	2	-	2	-	-	8	8	-	-	4	4	-	2	25	27
Total	211	34	3	248	1,619	152	111	1,882	249	52	2	303	1,286	174	23	1,483	692	92	21	805	4,057	504	160	4,721

Ethnicity — All Students — by Level

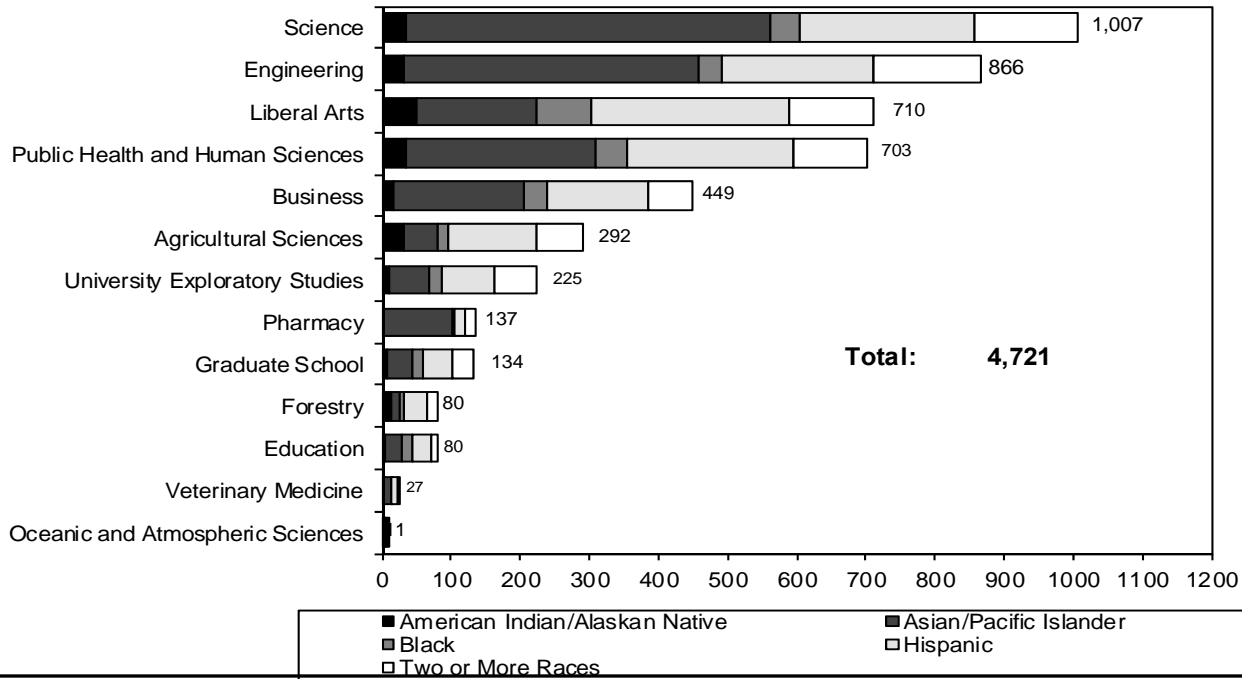


U.S. Minorities by Gender



*International students are identified by citizenship code.

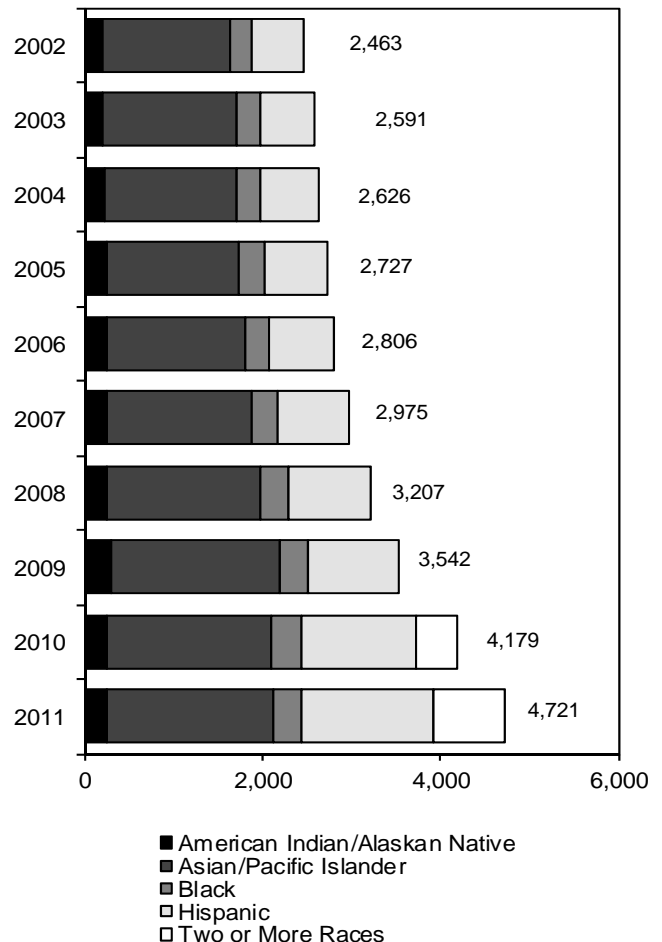
U.S Minorities by Academic Unit



Minority Enrollment by Gender by Academic Unit

	Men	Women	Total
Agricultural Sciences	117	175	292
Business	286	163	449
Education	27	53	80
Engineering	708	158	866
Forestry	41	39	80
Graduate School	53	81	134
Liberal Arts	329	381	710
Oceanic & Atmospheric Sciences	6	5	11
Pharmacy	49	88	137
Public Health & Human Sciences	194	509	703
Science	448	559	1,007
Univ. Explor. Studies	131	94	225
Veterinary Medicine	5	22	27
Total	2,394	2,327	4,721

Minority Enrollment Ten-Year Comparison



Minority Enrollment 2007 - 2011

	2007	2008	2009	2010	2011
American Indian/Alaskan Native	248	256	292	255	248
Asian/Pacific Islander	1,637	1,719	1,905	1,856	1,882
Black	297	321	321	325	303
Hispanic	793	911	1,024	1,292	1,483
Two or More Races	-	-	-	451	805
TOTAL	2,975	3,207	3,542	4,179	4,721
% change	6.0%	7.8%	10.4%	18.0%	13.0%

Enrollment by Geographic Origin

Oregon Counties

Baker	39
Benton	1,782
Clackamas	2,127
Clatsop	159
Columbia	143
Coos	218
Crook	47
Curry	72
Deschutes	730
Douglas	324
Gilliam	6
Grant	26
Harney	32
Hood River	102
Jackson	480
Jefferson	61
Josephine	247
Klamath	192
Lake	46
Lane	1,393
Lincoln	236
Linn	887
Malheur	64
Marion	1,402
Morrow	41
Multnomah	1,950
Polk	436
Sherman	8
Tillamook	110
Umatilla	158
Union	74
Wallowa	25
Wasco	85
Washington	2,997
Wheeler	6
Yamhill	399

Total for Oregon 17,104

United States

Alabama	15
Alaska	130
Arizona	109
Arkansas	18
California	1,774
Colorado	158
Connecticut	22
Delaware	4
District of Columbia	13
Florida	110
Georgia	59
Hawaii	391
Idaho	173
Illinois	98
Indiana	16
Iowa	37
Kansas	20
Kentucky	24
Louisiana	19
Maine	12
Maryland	49
Massachusetts	58
Michigan	58
Minnesota	82

Mississippi	8
Missouri	44
Montana	96
Nebraska	17
Nevada	148
New Hampshire	18
New Jersey	40
New Mexico	42
New York	101
North Carolina	60
North Dakota	12
Ohio	77
Oklahoma	25
Pennsylvania	78
Rhode Island	10
South Carolina	28
South Dakota	14
Tennessee	33
Texas	143
U.S. Possessions/Territories	12
Utah	95
Vermont	13
Virginia	103
Washington	1,078
West Virginia	12
Wisconsin	66
Wyoming	34

Total for U.S. States 5,856

Foreign Countries*

Afghanistan	1
Albania	2
Angola	1
Argentina	1
Armenia	3
Australia	13
Austria	5
Bahrain	2
Bangladesh	11
Bolivia	2
Brazil	7
Cambodia	2
Cameroon	2
Canada	47
Chile	6
China, Peoples Republic Of	584
Colombia	8
Costa Rica	2
Cyprus	1
Czech Republic	4
Denmark	11
Ecuador	9
Egypt	2
El Salvador	2
Eritrea	1
Estonia	1
Ethiopia	4
France	18
Gambia	2
Germany	14
Ghana	3
Guatemala	2
Hong Kong	25
Hungary	1
India	109
Indonesia	33

Iran	52
Iraq	4
Israel	3
Japan	44
Jordan	3
Kazakhstan	1
Kenya	4
Kuwait	57
Lebanon	4
Libya	11
Luxembourg	1
Malawi	1
Malaysia	10
Mali	1
Mauritius	1
Mexico	15
Nepal	5
Netherlands	2
New Zealand	5
Nigeria	4
Norway	1
Oman, Sultanate Of	1
Pakistan	2
Peru	2
Philippines	4
Poland	2
Portugal	3
Qatar	19
Russia	9
Saudi Arabia	215
Senegal	2
Serbia	2
Sierra Leone	1
Singapore, Republic of	4
Slovakia	1
South Africa	2
South Korea	148
Spain	4
Sri Lanka	5
Sweden	3
Switzerland	2
Syria	2
Taiwan, Republic of China	53
Thailand	86
Tunisia	2
Turkey	6
Uganda	1
Ukraine	7
United Arab Emirates	25
United Kingdom	26
Uruguay	2
Uzbekistan	1
Venezuela	3
Vietnam	30
Yemen	2
Zambia	2
Zimbabwe	1

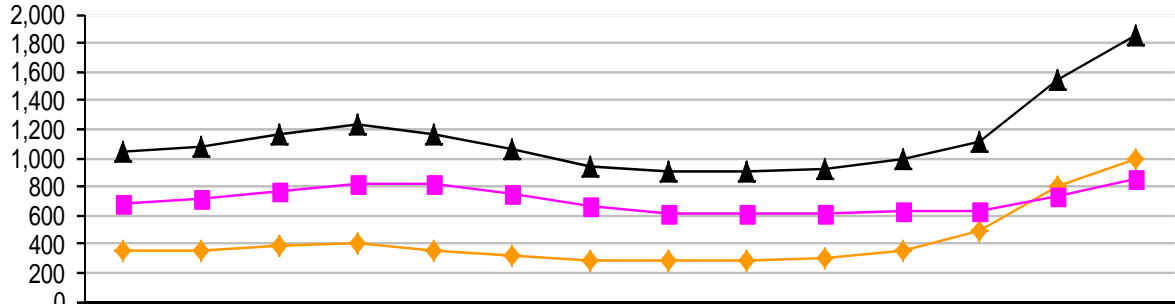
Total for Foreign Countries 1,850

Unknown 167

GRAND TOTAL 24,977

*Foreign countries are based upon country of citizenship.

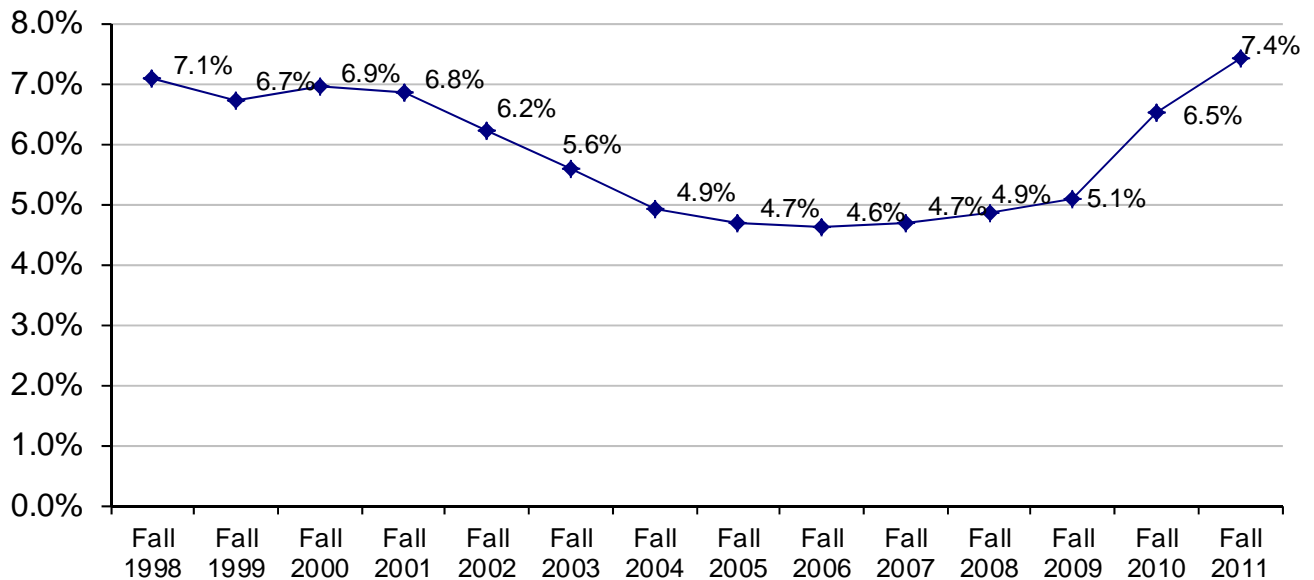
**International* Student Enrollment
Fall Term 1998 to Fall Term 2011**



	Fal 1998	Fal 1999	Fal 2000	Fal 2001	Fal 2002	Fal 2003	Fal 2004	Fal 2005	Fal 2006	Fal 2007	Fal 2008	Fal 2009	Fal 2010	Fal 2011
—◆— Undergraduate	351	356	395	410	350	311	287	290	293	309	356	493	810	995
—■— Graduate**	684	723	771	824	819	750	657	614	604	619	632	627	738	857
—▲— Total	1,035	1,079	1,166	1,234	1,169	1,061	944	904	897	928	988	1,120	1,548	1,852



**The Percentage of OSU Total Enrollment for International Students
Fall Term 1998 to Fall Term 2011**



*Prior to Fall 2007, international students were identified by Residency Code, Fall 2007-2009, international students were identified by Admit Type code. Since Fall 2010, international students were identified by citizenship code.

** Includes First Professional Students.

OSU Extended Campus

Enrollment, Credit Hours, and FTE by Class Standing

Students Who Took Courses Through Ecampus*

<u>Class Standing</u>	<u>Student Enrollment</u>	<u>Student Credit Hours</u>	<u>Student FTE</u>
Freshman	483	1,839	122.6
Sophomore	669	3,024	201.6
Junior	1,146	6,232	415.5
Senior	1,827	10,310	687.3
Post Baccalaureate	264	1,440	96.0
Non-Degree Undergrad	320	1,452	96.8
Total for Undergraduate	4,709	24,297	1,619.8
Masters	218	833	69.4
Doctoral	124	585	65.0
Non-Degree Graduate	510	1,990	165.8
Total for Graduate	852	3,408	300.3
Doctor of Pharmacy	3	4	0.3
Veterinary Medicine	-	-	-
Total for First Professional	3	4	0.3
GRAND TOTAL (Fall 2011)	5,564	27,709	1,920.4
(Fall 2010)	4,811	23,102	1,618.9

*Table indicates students enrolled in courses offered not only through Ecampus, but also courses at OSU-Corvallis.

Enrollment by Class Standing and Residency

Students Who Took Courses Only Through Ecampus**

<u>Class Standing</u>	<u>Oregon Resident</u>	<u>Non-Resident</u>	<u>Total</u>
Freshman	21	46	67
Sophomore	103	93	196
Junior	214	238	452
Senior	419	347	766
Post Baccalaureate	47	132	179
Non-Degree Undergrad	48	237	285
Total for Undergraduate	852	1,093	1,945
Masters	83	77	160
Doctoral	51	63	114
Non-Degree Graduate	101	322	423
Total for Graduate	235	462	697
Doctor of Pharmacy	-	-	-
Veterinary Medicine	-	-	-
Total for First Professional	-	-	-
GRAND TOTAL (Fall 2011)	1,087	1,555	2,642
(Fall 2010)	995	1,276	2,271

**Table indicates students enrolled in only Ecampus-offered courses; i.e., students are not enrolled in any OSU-Corvallis on-campus courses.

Student Credit Hours by Academic Unit* and Class Standing

<u>Academic Unit*</u>	<u>Freshman</u>	<u>Sophomore</u>	<u>Junior</u>	<u>Senior</u>	<u>Post Bac</u>	<u>Non-Degree Undergrad</u>	<u>Undergrad Total</u>	<u>Master</u>	<u>Doctorate</u>	<u>Degree Grad</u>	<u>Grad Total</u>	<u>First Professional</u>	<u>TOTAL</u>
AG	108	299	935	2,046	518	140	4,046	30	3	388	421	-	4,467
BUS	8	104	304	596	28	36	1,076	4	-	12	16	-	1,092
ED	-	-	3	15	6	3	27	294	573	98	965	-	992
ENGR	16	24	97	125	3	-	265	131	-	25	156	-	421
FOR	-	36	204	327	66	32	665	90	-	112	202	-	867
LA	775	1,618	2,792	4,548	339	542	10,614	57	-	178	235	4	10,853
OC	64	186	401	600	116	30	1,397	27	-	213	240	-	1,637
PHARM	8	16	28	18	8	4	82	-	-	4	4	-	86
PHHS	77	259	640	774	69	20	1,839	-	-	76	76	-	1,915
SCI	777	467	792	1,076	267	643	4,022	185	9	865	1,059	-	5,081
ALS**	6	12	8	20	2	2	50	-	-	-	-	-	50
IP***	-	3	28	165	15	-	211	9	-	7	16	-	227
GRAD	-	-	-	-	3	-	3	6	-	12	18	-	21
Total SCH	1,839	3,024	6,232	10,310	1,440	1,452	24,297	833	585	1,990	3,408	4	27,709
Total FTE	122.6	201.6	415.5	687.3	96.0	96.8	1,619.8	69.4	65.0	165.8	300.3	0.3	1,920.4

*Academic Units are those that offered the courses. **Academic Learning Services. ***Interdisciplinary Programs.

OSU Extended Campus Student Enrollment by Academic Unit and Ethnicity

All Students Who Took Courses Through ECampus

Acad. Unit	American Indian /Alaskan Native		Asian /Pacific Islander		Black		Hispanic		Two or More Races		White		International		Declined to Respond / Missing		TOTAL		
	Under-grad	Grad Total	Under-grad	Grad Total	Under-grad	Grad Total	Under-grad	Grad Total	Under-grad	Grad Total	Under-grad	Grad Total	Under-grad	Grad Total	Under-grad	Grad Total	Under-grad	Grad Total	
AG	9	-	15	3	5	-	34	3	23	2	497	17	8	2	65	3	656	30	686
BUS	6	-	29	-	9	-	20	-	10	-	257	2	37	1	32	-	400	3	403
ED	-	2	1	17	-	9	-	14	5	115	120	-	-	1	-	14	6	177	183
ENGR	1	1	37	2	4	-	8	4	9	2	186	40	58	3	27	2	330	54	384
FOR	7	1	1	1	3	1	11	3	8	-	319	29	3	1	55	2	407	38	445
GRAD	-	5	-	15	-	11	-	25	-	18	293	-	-	16	-	52	-	435	435
LA	19	-	56	-	39	1	87	-	39	1	889	7	18	-	102	-	1,249	9	1,258
OC	-	-	-	-	-	-	-	-	-	-	-	7	-	-	-	-	-	7	7
PHARM*	-	-	-	1	-	-	-	-	-	-	2	2	-	-	-	-	-	3	3
PHS	7	-	43	-	12	-	47	-	17	-	563	3	8	-	49	-	746	3	749
SCI	6	1	66	-	11	-	52	4	22	2	446	72	14	6	60	11	677	96	773
UESP	5	-	12	-	10	-	11	-	13	-	168	-	5	-	14	-	238	-	238
Total	60	10	260	39	93	22	270	53	141	30	3,330	587	151	30	404	84	4,709	855	5,564

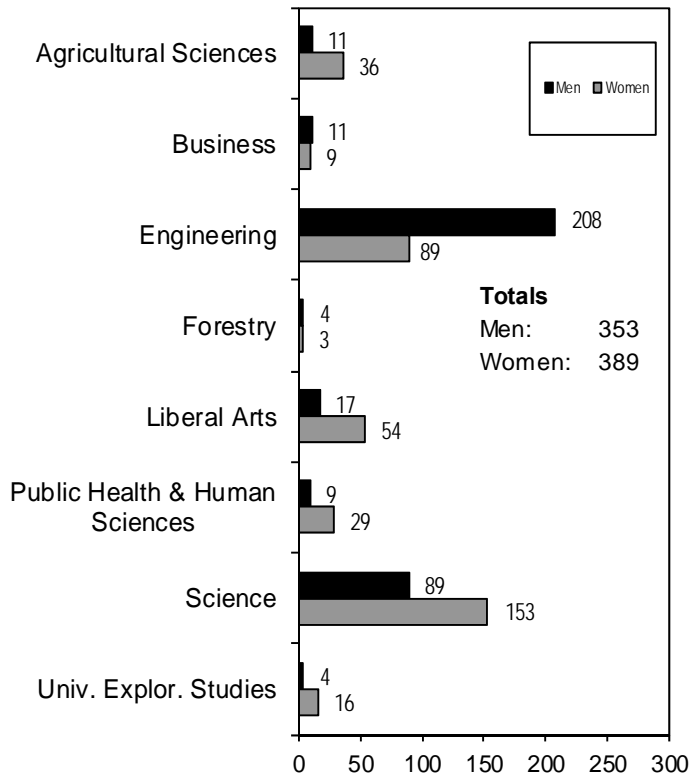
*First Professional students are included in the graduate totals.

University Honors College Students By Academic Unit and Student Class Standing

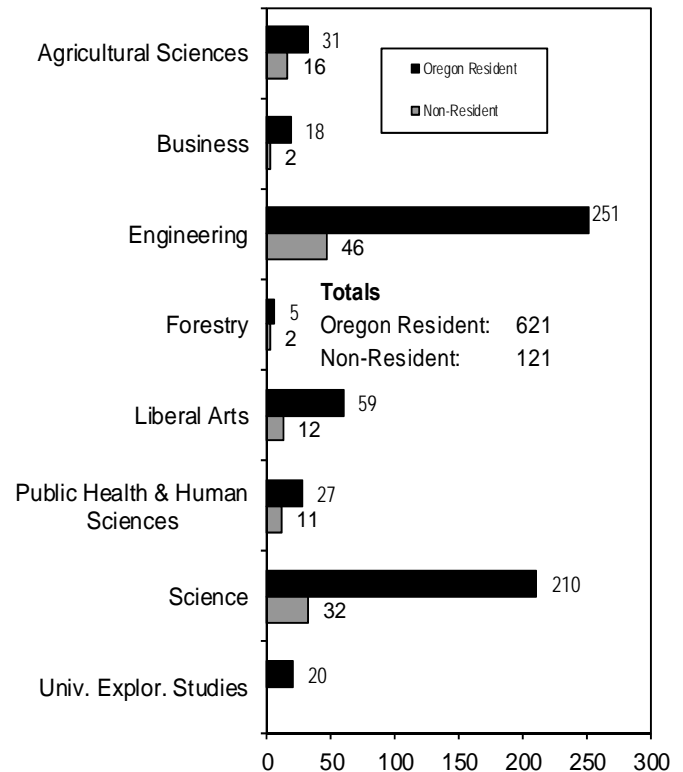
Academic Unit	Freshman	Sophomore	Junior	Senior	Total	% of Undergrad Enrollment for College
Agricultural Sciences	7	10	14	16	47	2.7
Business	2	6	6	6	20	0.9
Engineering	62	69	62	104	297	6.8
Forestry	2	-	2	3	7	0.9
Liberal Arts	12	14	17	28	71	2.0
Public Health and Human Sciences	8	10	10	10	38	1.1
Science	41	73	59	69	242	7.1
University Exploratory Studies	12	8	-	-	20	2.0
TOTAL*	146	190	170	236	742	3.6

*The total may include students who are participating in MECOP, Study Abroad, or other experiential learning programs.

By Academic Unit and Gender



By Academic Unit and Residency



Cascades Campus Enrollment

Fall Term 2011						
Tier	Enrollment Type	Institution		2010	2011	Change
1 & 2*	OSU-Cascades	OSU, UO	Headcount	678	764	12.7%
			Term FTE	409.7	469.1	14.5%
Total OSU-Cascades Enrollment			Headcount	678	764	12.7%
			Term FTE	409.7	469.1	14.5%
3**	OSU Admitted Non-Enrolled	COCC	Headcount	169	171	1.2%
			Term FTE	129.7	126.9	-2.2%
Total Students Receiving Services			Headcount	847	935	10.4%
			Term FTE	539.4	596.0	10.5%

Oregon State University - Cascades Campus Tier 1 & 2 : OSU and UO

	2010		2011		Change	
	Headcount	Percent	Headcount	Percent	Headcount	Percent
Gender						
Female	432	63.7%	462	60.5%	30	6.9%
Male	246	36.3%	302	39.5%	56	22.8%
Full-Time, Part-Time						
Full-Time	243	35.8%	279	36.5%	36	14.8%
Part-Time	435	64.2%	485	63.5%	50	11.5%
Level						
Undergraduate	574	84.7%	640	83.8%	66	11.5%
Graduate	104	15.3%	124	16.2%	20	19.2%
Residency						
Oregon Residents	649	95.7%	713	93.3%	64	9.9%
Non-Residents	29	4.3%	51	6.7%	22	75.9%
Level and Age Group						
Undergraduate < 25	220	32.4%	250	32.7%	30	13.6%
Undergraduate 25 and older	354	52.2%	390	51.0%	36	10.2%
Graduate 25 and older	95	14.0%	114	14.9%	19	20.0%
Graduate <25	9	1.3%	10	1.3%	1	11.1%
Ethnicity						
American Indian/Alaskan Native	11	1.6%	8	1.0%	-3	-27.3%
Asian / Pacific Islander	4	0.6%	8	1.0%	4	100.0%
Black	0	0.0%	1	0.1%	1	
Hispanic	32	4.7%	40	5.2%	8	25.0%
Two or More Races	10	1.5%	14	1.8%	4	40.0%
Total for U.S. Minorities	57	8.4%	71	9.3%	14	24.6%
White	463	68.3%	573	75.0%	110	23.8%
International	0	0.0%	0	0.0%	0	
Declined to Respond / Missing	158	23.3%	120	15.7%	-38	-24.1%
GRAND TOTAL	678	100.0%	764	100.0%	86	12.7%

*Source: Office of Institutional Research, Oregon State University.

**Source: OSU-Cascades.

Oregon State University - Cascades Campus Tier 1 & 2 : OSU and UO

Class Standing		2010	2011	Change
Freshman	Headcount	12	7	-41.7%
	Credit Hours	76	39	-48.7%
	FTE*	5.1	2.6	-48.7%
Sophomore	Headcount	66	72	9.1%
	Credit Hours	427	458	7.3%
	FTE*	28.5	30.5	7.3%
Junior	Headcount	211	220	4.3%
	Credit Hours	1,813	1,929	6.4%
	FTE*	120.9	128.6	6.4%
Senior	Headcount	228	290	27.2%
	Credit Hours	2,190	2,892	32.1%
	FTE*	146.0	192.8	32.1%
Postbac Degree Seeking	Headcount	27	22	-18.5%
	Credit Hours	226	160	-29.2%
	FTE*	15.1	10.7	-29.2%
Non-degree Undergraduate	Headcount	30	29	-3.3%
	Credit Hours	133	140	5.3%
	FTE*	8.9	9.3	5.3%
Undergraduate Subtotal	Headcount	574	640	11.5%
	Credit Hours	4,865	5,618	15.5%
	FTE*	324.3	374.5	15.5%
Masters	Headcount	103	114	10.7%
	Credit Hours	1,021	1,092	7.0%
	FTE*	85.1	91.0	7.0%
Non-Degree Graduate	Headcount	1	10	900.0%
	Credit Hours	3	43	1333.3%
	FTE*	0.3	3.6	1333.3%
Graduate Subtotal	Headcount	104	124	19.2%
	Credit Hours	1,024	1,135	10.8%
	FTE*	85.3	94.6	10.8%
TOTAL	Headcount	678	764	12.7%
	Credit Hours	5,889	6,753	14.7%
	FTE*	409.7	469.1	14.5%

INTO Oregon State University Fall Term 2011 Enrollment

	2010		2011		Change	
	Headcount	Percent	Headcount	Percent	Headcount	Percent
Academic English	265	50.0%	366	42.4%	101	38.1%
General English	42	7.9%	114	13.2%	72	171.4%
Graduate Pathways	70	13.2%	142	16.4%	72	102.9%
Undergraduate Pathways	153	28.9%	242	28.0%	89	58.2%
Total	530	100.0%	864	100.0%	334	63.0%
Female	166	31.3%	231	26.7%	65	39.2%
Male	364	68.7%	633	73.3%	269	73.9%
Total	530	100.0%	864	100.0%	334	63.0%
25 and Older	86	16.2%	117	13.5%	31	36.0%
Less than 25	444	83.8%	747	86.5%	303	68.2%
Total	530	100.0%	864	100.0%	334	63.0%

Enrollment by Country		
CITIZENSHIP	Headcount	Percent
Bahrain	1	0.1%
China, Peoples Republic	422	48.8%
Colombia	2	0.2%
Gambia	2	0.2%
Hong Kong	7	0.8%
India	1	0.1%
Indonesia	4	0.5%
Iran	1	0.1%
Iraq	4	0.5%
Japan	44	5.1%
Kazakhstan	1	0.1%
Kuwait	2	0.2%
Libya	5	0.6%
Macau	1	0.1%
Malaysia	2	0.2%
Mauritius	1	0.1%
Portugal	1	0.1%
Qatar	1	0.1%
Republic of Singapore	1	0.1%
Russia	5	0.6%
Saudi Arabia	213	24.7%
South Korea	67	7.8%
Sultanate Of Oman	27	3.1%
Taiwan - Republic of China	13	1.5%
Thailand	19	2.2%
Ukraine	1	0.1%
United Arab Emirates	9	1.0%
Vietnam	5	0.6%
Unknown	2	0.2%
Total	864	100.0%

INTO OSU - Enrollment by College and Major		
College	Major	Headcount
College of Business	Pre-Business	103
College of Business	Pre-MBA	79
College of Engineering	Chemical Engineering	7
College of Engineering	Civil Engineering	4
College of Engineering	Computer Science	8
College of Engineering	Construction Engineering Management	2
College of Engineering	Electrical and Computer Engineering	26
College of Engineering	Environmental Engineering	6
College of Engineering	Industrial Engineering	2
College of Engineering	Mechanical Engineering	8
College of Engineering	Pre-Bioengineering	1
College of Engineering	Pre-Chemical Engineering	8
College of Engineering	Pre-Civil Engineering	5
College of Engineering	Pre-Computer Science	3
College of Engineering	Pre-Electrical and Computer Engineering	10
College of Engineering	Pre-Environmental Engineering	1
College of Engineering	Pre-General Engineering	42
College of Engineering	Pre-Industrial Engineering	4
College of Engineering	Pre-Mechanical Engineering	18
College of Liberal Arts	Economics	2
College of Liberal Arts	Music	1
College of Public Health and Human Sciences	Merchandising Management	1
College of Public Health and Human Sciences	Pre-Interiors	1
College of Public Health and Human Sciences	Public Health	1
College of Science	Chemistry	1
College of Science	General Science	7
Intensive English Program	Academic English	352
Intensive English Program	General English	3
Intensive English Program	Study Abroad with English	6
Non-Credit	Academic English	9
Non-Credit	General English	110
University Exploratory Study	University Exploratory Studies	33
Total		864

History of Student Enrollment

Fall Term Headcount - 4th Week

Academic Year	Undergraduate	Graduate	First Professional	TOTAL	% CHANGE
1991-92	12,070	2,778	67	14,915	-6.9
1992-93	11,430	2,835	71	14,336	-3.9
1993-94	11,261	2,938	65	14,264	-0.5
1994-95	11,221	3,034	68	14,323	0.4
1995-96	11,280	2,805	76	14,161	-1.1
1996-97	11,019	2,677	88	13,784	-2.7
1997-98	11,382	2,656	89	14,127	2.5
1998-99	11,998	2,539	81	14,618	3.5
1999-00	13,167	2,773	151	16,091	10.1
2000-01	13,772	2,789	227	16,788	4.3
2001-02	14,877	2,868	289	18,034	7.4
2002-03	15,413	3,015	361	18,789	4.2
2003-04	15,599	2,988	392	18,979	1.0
2004-05	15,713	3,000	449	19,162	1.0
2005-06	15,747	2,976	513	19,236	0.4
2006-07	15,829	3,001	532	19,362	0.7
2007-08	16,228	2,994	531	19,753	2.0
2008-09	16,673	3,095	552	20,320	2.9
2009-10	18,067	3,328	574	21,969	8.1
2010-11	19,559	3,618	584	23,761	8.2
2011-12	20,621	3,776	580	24,977	5.1

Highlights

- For Fall 2011, total enrollment was 24,977 students.
- When Fall 2010 and Fall 2011 are compared, the total enrollment increased by 1,216 students or 5.1% (from 23,761 to 24,977), the FTE increased by 4.6%, and the Student Credit Hours increased by 4.6%.
- The number of part-time students increased by 8.2% (from 4,405 to 4,767).
- When compared to Fall 2010, the undergraduate enrollment increased by 1,062 students, or 5.4% (from 19,559 to 20,621); the graduate enrollment increased by 4.4% (from 3,618 to 3,776); the first professional enrollment decreased by 0.7% (from 584 to 580).
- When compared to Fall 2010, Oregon residents increased by 1.1%; non-resident increased by 15.7%; and international student enrollment increased by 19.6%.
- University Honors College had an enrollment of 742.
- INTO OSU had a total enrollment of 864: 366 in Academic English program, 114 INTO OSU General Pathways, 142 INTO OSU Graduate Pathways, and 242 in Undergraduate Pathway program.
- The College of Engineering had the largest student enrollment (5,213) when compared to the other academic units.
- OSU Extended Campus had 5,564 students, an increase of 15.7% compared to 2010. These students took 27,709 credits, of which 39.2% were from the College of Liberal Arts, while 18.3% were from the College of Science.
- The percentage of U.S. minority students was 18.9% of the total enrollment. The number of minority students increased by 13.0% when compared to Fall 2010 (from 4,179 to 4,721).
- Most popular undergraduate majors for Fall 2011 were:

Business Administration	1,763
Education	1,106
General Science	961
Exercise and Sport Science	959
Human Development and Family Sciences	894
- The ratio of Admitted to Applications was 66.8%. The ratio of Enrolled to Admitted was 46.8%.

Source: Fall Term 2011, 4th Week Student Data Extract File.

Comments about this publication are welcome.

Please contact the staff in the Office of Institutional Research, 500 Kerr Administration Building (541-737-9600).