

Enrollment Summary — Fall Term 2010



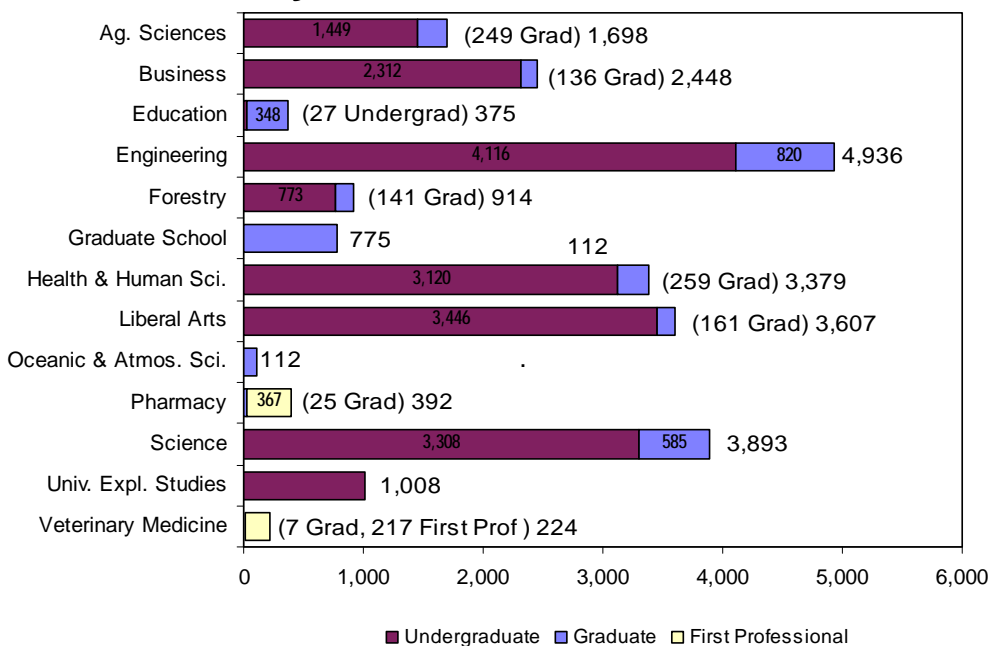
Office of Institutional Research • No. 22 • November 2010 • <http://oregonstate.edu/admin/aa/ir/enrollmentsum.html>

Enrollment at-a-Glance

	2009	2010	Change	% Change	*Fall Term uses the OUS definition, which excludes credit hours and FTE for students who withdrew from courses before the 4th week. A gribusness credits at EOU are also not included.
Total Enrollment (Headcount)	21,969	23,761	1,792	8.2%	
Total Student FTE *	19,887.0	21,525.0	1,638.0	8.2%	
Total Student Credit Hours*	281,602	304,699	23,097	8.2%	

	2009		2010		Change	
	Headcount	Percent	Headcount	Percent	Headcount	Percent
Women	10,480	47.7%	11,356	47.8%	876	8.4%
Men	11,489	52.3%	12,405	52.2%	916	8.0%
Full-Time	17,861	81.3%	19,356	81.5%	1,495	8.4%
Part-Time	4,108	18.7%	4,405	18.5%	297	7.2%
Undergraduate	18,067	82.2%	19,559	82.3%	1,492	8.3%
Graduate	3,328	15.1%	3,618	15.2%	290	8.7%
First Professional	574	2.6%	584	2.5%	10	1.7%
U.S. Minorities	3,542	16.1%	4,179	17.6%	637	18.0%
Oregon Residents Total	16,670	75.9%	17,178	72.3%	508	3.0%
Undergraduate	14,757	67.2%	15,260	64.2%	503	3.4%
Graduate	1,455	6.6%	1,463	6.2%	8	0.5%
First Professional	458	2.1%	455	1.9%	-3	-0.7%
Non-Residents Total	5,299	24.1%	6,583	27.7%	1,284	24.2%
Undergraduate	3,310	15.1%	4,299	18.1%	989	29.9%
Graduate	1,873	8.5%	2,155	9.1%	282	15.1%
First Professional	116	0.5%	129	0.5%	13	11.2%
International	1,120	5.1%	1,548	6.5%	428	38.2%
Undergrad < 25	15,410	70.1%	16,508	69.5%	1,098	7.1%
Undergrad 25 and Older	2,657	12.1%	3,051	12.8%	394	14.8%
Graduate < 25	724	3.3%	884	3.7%	160	22.1%
Graduate 25 and Older	2,604	11.9%	2,734	11.5%	130	5.0%
First Professional < 25	270	1.2%	272	1.1%	2	0.7%
First Professional 25 and Older	304	1.4%	312	1.3%	8	2.6%

Enrollment by Academic Unit* and Student Level



Index

	Page
Academic Unit	1-2, 4-7, 10-11, 14-16
Admissions	2
Age	8
Class Standing	4, 8, 14-16
Extended Campus	14-15
Freshman GPA, SAT, ACT	2
Full Time, Part Time	1, 9
Gender	1-2, 4, 8-11, 16
Geographic Origin	12
Highlights	19
History of Enrollment.....	19
Honors College	16
International	1, 13
INTO-OSU	18
Major.....	5-7
New Students	2-3
OSU-Cascades Campus.....	17
Residency	1, 9, 14, 16
Undergrad/Grad/First Prof...1-10, 13	
U.S Minorities	10-11

*Unduplicated headcount based upon student's primary college.

Applications and Admissions Summary

	# of Applications	# of Admitted	Ratio of Admitted to Applications	# of Enrolled*	Ratio of Enrolled to Admitted
Undergraduate	14,976	11,902	79.5%	5,520	46.4%
Graduate	5,255	2,020	38.4%	1,216	60.2%
First Professional	162	161	99.4%	143	88.8%
Total	20,393	14,083	69.1%	6,879	48.8%

*Fall Term 2010, 4th week Banner Student Data Extract File.
Source: OSU Admission and Orientation Office, SAR3100 on Oct.24, 2010.

Freshman Entrance GPA, SAT, and ACT Scores

Mean High School GPA

Gender	2005	2006	2007	2008	2009	2010
Male	3.43	3.43	3.42	3.44	3.41	3.48
Female	3.54	3.55	3.52	3.52	3.53	3.55
Both	3.48	3.49	3.46	3.48	3.47	3.51

Mean SAT Verbal Score

Gender	2005	2006	2007	2008	2009	2010
Male	538	529	530	527	530	533
Female	523	518	521	515	518	522
Both	531	523	526	522	524	528

Mean SAT Math Score

Gender	2005	2006	2007	2008	2009	2010
Male	569	567	569	567	567	571
Female	522	523	524	520	522	525
Both	546	546	548	545	545	548

Mean SAT Writing Score

Gender	2005	2006	2007	2008	2009	2010
Male	-	-	-	496	498	501
Female	-	-	-	507	510	514
Both	-	-	-	501	504	508

Mean SAT Composite Score

Gender	2005	2006	2007	2008*	2009*	2010*
Male	1,107	1,096	1,099	1,591	1,594	1,605
Female	1,045	1,041	1,045	1,543	1,549	1,560
Both	1,077	1,069	1,074	1,568	1,572	1,583

*Includes SAT Writing Score.

Mean ACT English Score

Gender	2005	2006	2007	2008	2009	2010
Male	21.4	21.7	21.8	21.7	22.4	22.3
Female	21.9	22.4	22.3	22.0	22.4	22.4
Both	21.7	22.1	22.0	21.9	22.4	22.4

Mean ACT Math Score

Gender	2005	2006	2007	2008	2009	2010
Male	24.0	24.7	24.8	24.4	25.0	25.3
Female	22.4	22.3	22.4	22.3	22.5	22.7
Both	23.1	23.4	23.6	23.4	23.7	24.0

Mean ACT Composite Score

Gender	2005	2006	2007	2008	2009	2010
Male	23.2	23.5	23.4	23.5	24.2	24.1
Female	22.6	22.9	22.6	22.4	22.7	22.9
Both	22.9	23.2	23.0	23.0	23.5	23.5

New Students by Academic Unit

	New Students	Percent for Unit
Agricultural Sciences	496	29.2
Business	709	29.0
Education	63	16.8
Engineering	1,520	30.8
Forestry	181	19.8
Graduate School	404	52.1
Health and Human Sciences	741	21.9
Liberal Arts	804	22.3
Oceanic and Atmospheric Sciences	30	26.8
Pharmacy	95	24.2
Science	1,296	33.3
University Exploratory Studies	485	48.1
Veterinary Medicine	55	<u>24.6</u>
Total	6,879	29.0

New Students— Where They Came From

New Undergraduate Students from High School				
	2009	2010	Change	
			Headcount	Percent
Oregon High Schools	2,742	2,656	-86	-3.1%
U.S. High Schools	661	845	184	27.8%
International High Schools	50	106	56	112.0%
Unknown	39	17	-22	-56.4%
Total	3,492	3,624	132	3.8%
New Undergraduate Transfer Students				
Oregon Community Colleges	672	671	-1	-0.1%
OUS Institutions	125	118	-7	-5.6%
Oregon Private Institutions	31	21	-10	-32.3%
Out-of-State Institutions	378	420	42	11.1%
Foreign Country Institutions	12	15	3	25.0%
Unknown	20	76	56	280.0%
Total	1,238	1,321	83	6.7%
New Graduate and First Professional Students				
Masters	508	601	93	18.3%
Doctoral	166	196	30	18.1%
PharmD (Doctor of Pharmacy)	91	92	1	1.1%
Vet Med (Doctor of Veterinary Medicine)	58	51	-7	-12.1%
Total	823	940	117	14.2%
New Non-Degree and Post Baccalaureate Students				
Total	908	994	86	9.5%
Total New Students	6,461	6,879	418	6.5%
Re-Admit Students	215	250	35	16.3%
Continuing Students	15,293	16,632	1,339	8.8%
	21,969	23,761	1,792	8.2%

New Undergraduate Students from High School			
Top Ten Oregon High Schools by Enrollment (Last Year's Rank)			
1. Southridge High School (1)	76	6. Clackamas High School (3)	52
2. West Linn High School (5)	71	7. Beaverton High School (11)	51
3. Westview High School (2)	60	8. Corvallis High School (12)	50
4. Tualatin High School (4)	59	9. Sunset High School (8)	49
5. Tigard Senior High School (6)	54	10. West Albany High School (15)	41
Top Ten States by Enrollment (Last Year's Rank)			
1. California (1)	357	6. Nevada (5)	21
2. Washington (2)	201	7. Alaska (6)	18
3. Hawaii (3)	84	8. Texas (11)	13
4. Colorado (7)	25	9. Arizona (9)	12
5. Idaho (4)	25	10. Utah (9)	11

New Undergraduate Transfers from Oregon Community Colleges		
	2009	2010
Blue Mountain Com College	7	13
Central Oregon Com College	41	32
Chemeketa Community College	103	141
Clackamas Community College	38	49
Clatsop Community College	10	6
Klamath Community College	3	4
Lane Community College	77	62
Linn-Benton Community College	163	123
Mount Hood Community College	39	38
Portland Com College-Main	115	130
Rogue Community College	22	15
Southwestern Ore Comm College	28	20
Treasure Valley Com College	4	10
Umpqua Community College	22	28
Total	672	709

New Undergraduate Transfers from OUS Institutions		
	2009	2010
Eastern Oregon University	6	6
Oregon Inst of Technology	6	5
Portland State University	30	31
Southern Oregon University	16	13
University of Oregon	40	37
Western Oregon University	27	26
Total	125	118

New Undergraduate Transfers from Oregon Private Institutions		
	2009	2010
Cascade College	1	-
Concordia University	1	1
Corban College	2	1
George Fox University	5	6
Linfield College	6	3
Marylhurst University	-	1
Multnomah University	1	-
Northwest Christian University	2	-
Pacific University	8	2
University of Portland	1	3
Warner Pacific College	-	1
Western States Chiropractic Co	-	1
Willamette University	4	2
Total	31	21

New Students from Oregon Counties				
	2009	2010	2009	2010
Baker	11	5	Lake	10
Benton	413	380	Lane	369
Clackamas	593	518	Lincoln	67
Clatsop	39	38	Linn	193
Columbia	44	40	Malheur	16
Coos	58	61	Marion	316
Crook	19	9	Morrow	8
Curry	18	14	Multnomah	542
Deschutes	182	182	Polk	98
Douglas	89	88	Sherman	3
Gilliam	1	2	Tillamook	29
Grant	3	10	Umatilla	42
Harney	9	9	Union	21
Hood River	30	27	Wallowa	5
Jackson	130	139	Wasco	18
Jefferson	17	14	Washington	865
Josephine	71	48	Wheeler	2
Klamath	49	57	Yamhill	77
				100

Student Enrollment By Academic Unit and Student Class Standing

Academic Unit	Freshman	Sophomore	Junior	Senior	Post Bac	Non-Degree Undergrad	Undergrad Total	Master	Doctorate	Non-Degree Grad	Grad Total	First Professional	TOTAL
AG	280	278	331	428	109	23	1,449	150	95	4	249	-	1,698
BUS	611	435	483	628	41	114	2,312	93	-	43	136	-	2,448
ED	-	-	-	1	26	-	27	202	146	-	348	-	375
ENGR	1,184	843	828	1,121	68	72	4,116	472	319	29	820	-	4,936
FOR	86	116	166	316	70	19	773	72	51	18	141	-	914
HHS	682	705	799	875	34	25	3,120	153	105	1	259	-	3,379
LA	645	641	903	1,143	48	66	3,446	135	24	2	161	-	3,607
OC	-	-	-	-	-	-	-	61	33	18	112	-	112
PHARM	-	-	-	-	-	-	-	3	22	-	25	367	392
SCI	932	674	621	845	120	116	3,308	222	314	49	585	-	3,893
VM	-	-	-	-	-	-	-	6	1	-	7	217	224
GRAD	-	-	-	-	-	-	-	160	120	495	775	-	775
UESP	582	188	75	21	1	141	1,008	-	-	-	-	-	1,008
Total 2010	5,002	3,880	4,206	5,378	517	576	19,559	1,729	1,230	659	3,618	584	23,761
Total 2009	4,621	3,681	3,910	4,927	427	501	18,067	1,567	1,150	611	3,328	574	21,969

By Academic Unit, Gender, and Student Level

Academic Unit	Undergraduate				Graduate				First Professional				Total	%
	Men	Women	Total	% of Univ.	Men	Women	Total	% of Univ.	Men	Women	Total	% of Univ.		
AG	628	821	1,449	6.1%	114	135	249	1.0%	-	-	-	-	1,698	7.1%
BUS	1,499	813	2,312	9.7%	82	54	136	0.6%	-	-	-	-	2,448	10.3%
ED	8	19	27	0.1%	99	249	348	1.5%	-	-	-	-	375	1.6%
ENGR	3,543	573	4,116	17.3%	651	169	820	3.5%	-	-	-	-	4,936	20.8%
FOR	499	274	773	3.3%	87	54	141	0.6%	-	-	-	-	914	3.8%
HHS	727	2,393	3,120	13.1%	63	196	259	1.1%	-	-	-	-	3,379	14.2%
LA	1,498	1,948	3,446	14.5%	66	95	161	0.7%	-	-	-	-	3,607	15.2%
OC	-	-	-	0.0%	58	54	112	0.5%	-	-	-	-	112	0.5%
PHARM	-	-	-	0.0%	15	10	25	0.1%	150	217	367	1.5%	392	1.6%
SCI	1,428	1,880	3,308	13.9%	292	293	585	2.5%	-	-	-	-	3,893	16.4%
VM	-	-	-	0.0%	3	4	7	0.0%	39	178	217	0.9%	224	0.9%
GRAD	-	-	-	0.0%	338	437	775	3.3%	-	-	-	-	775	3.3%
UESP	518	490	1,008	4.2%	-	-	-	0.0%	-	-	-	-	1,008	4.2%
Total 2010	10,348	9,211	19,559	82.3%	1,868	1,750	3,618	15.2%	189	395	584	2.5%	23,761	100.0%
Total 2009	9,573	8,494	18,067	82.2%	1,719	1,609	3,328	15.1%	197	377	574	2.6%	21,969	100.0%

Enrollment by Major

The Enrollment by Major includes duplicate headcount totals for Colleges and the University. Included in the totals are students who have indicated a dual major or double degree program; e.g., Primary Major 1, Primary Major 2, Secondary Major 1, and Secondary Major 2; e.g., a first professional student could also have a secondary undergraduate major.

ACADEMIC UNIT	UNDER-GRAD	GRAD	TOTAL
<u>College of Agricultural Sciences</u>			
Agricultural and Resource Economics	-	7	7
Agricultural Business Management	107	-	107
Agricultural Education	-	13	13
Animal Science	-	16	16
Animal Sciences	431	-	431
Bioresource Research	51	-	51
Crop Science	-	18	18
Crop Science and Soil Science	33	-	33
Environmental Economics and Policy	1	-	1
Environmental Economics, Policy and Management	30	-	30
Fisheries and Wildlife	378	-	378
Fisheries Science	-	44	44
Food Science and Technology	154	37	191
General Agriculture	142	1	143
Horticulture	124	27	151
International Studies	3	-	3
Master of Agriculture	-	1	1
Rangeland Ecology and Management	19	7	26
Soil Science	-	13	13
Toxicology	-	23	23
Wildlife Science	-	42	42
Non-Degree Agricultural Sciences	23	4	27
TOTAL	1,496	253	1,749

Joint program with CLA, FOR, AG.

<u>College of Business</u>			
Accountancy	157	-	157
Accounting	23	-	23
Business Administration	302	144	446
Finance	112	-	112
International Studies	4	-	4
Management	94	-	94
Marketing	172	-	172
Pre-Business	1,470	1	1,471
Non-Degree Business	45	-	45
TOTAL	2,379	145	2,524

<u>College of Education</u>			
Adult Education	-	40	40
College Student Services Administration	-	45	45
Counseling	-	82	82
Education	142	142	284
Pre-Education	1,245	10	1,255
Teaching: Elementary Education	-	36	36

ACADEMIC UNIT	UNDER-GRAD	GRAD	TOTAL
<u>College of Education (Cont.)</u>			
Teaching: Family and Consumer Sciences Ed	-	1	1
Teaching: Music Education	-	8	8
TOTAL	1,387	364	1,751

<u>College of Engineering</u>			
Bioengineering	46	-	46
Pre-Bioengineering	97	-	97
Biological and Ecological Engineering	-	21	21
Bioresource Engineering	-	1	1
Chemical Engineering	141	78	219
Pre-Chemical Engineering	239	-	239
Civil Engineering	208	117	325
Pre-Civil Engineering	340	-	340
Computer Engineering	2	-	2
Pre-Computer Engineering	1	-	1
Computer Science	211	127	338
Pre-Computer Science	269	-	269
Construction Engineering Management	199	11	210
Pre-Construction Engineering Management	183	-	183
Ecological Engineering	25	-	25
Pre-Ecological Engineering	33	-	33
Electrical and Computer Engineering	216	168	384
Pre-Electrical and Computer Engineering	380	-	380
Electrical and Electronics Engineering	6	-	6
Pre-Electrical Engineering	1	-	1
Engineering Physics	13	1	14
Pre-Engineering Physics	13	-	13
Environmental Engineering	27	1	28
Pre-Environmental Engineering	92	-	92
Pre-General Engineering	196	-	196
Industrial Engineering	89	52	141
Pre-Industrial Engineering	84	-	84
International Studies	4	-	4
Manufacturing Engineering	32	-	32
Pre-Manufacturing Engineering	21	-	21
Materials Science	-	33	33
Mechanical Engineering	313	89	402
Pre-Mechanical Engineering	531	-	531
Medical Physics	-	7	7
Nuclear Engineering	48	39	87
Pre-Nuclear Engineering	108	-	108
Ocean Engineering	-	8	8
Radiation Health Physics	12	86	98
Pre-Radiation Health Physics	21	-	21
Non-Degree Pre-Engineering	16	3	19
TOTAL	4,217	842	5,059

ACADEMIC UNIT	UNDER-GRAD	GRAD	TOTAL
<u>College of Forestry</u>			
Forest Engineering	42	22	64
Forest Engineering - Civil Engineering	10	-	10
Pre-Forest/Civil Engineering	40	-	40
Forest Management	135	-	135
Forest Operations Management	46	-	46
Forest Products	-	1	1
Forest Recreation Resources	1	-	1
Forest Resources	-	38	38
Forest Science	-	39	39
International Studies	1	-	1
Natural Resources	397	-	397
Outdoor Recreation Leadership and Tourism	1	-	1
Recreation Resource Management	52	-	52
Renewable Materials	9	-	9
Sustainable Natural Resources	-	17	17
Tourism and Outdoor Leadership	8	-	8
Wood Science	-	29	29
Wood Science and Technology	17	-	17
Non-Degree Forestry	19	2	21
Undecided Forestry	1	-	1
TOTAL	779	148	927

Graduate School

Applied Economics	-	39	39
Economics	-	3	3
Environmental Science	-	64	64
Interdisciplinary Studies	-	73	73
Molecular and Cellular Biology	-	49	49
Water Resources Engineering	-	27	27
Water Resources Policy and Management	-	12	12
Water Resources Science	-	24	24
Non-Degree Graduate Student	2	515	517
TOTAL	2	806	808

College of Health and Human Sciences

Apparel Design	87	-	87
Pre-Apparel	91	-	91
Athletic Training	44	-	44
Pre-Athletic Training	1	-	1
Design and Human Environment	-	30	30
Exercise and Sport Science	1,022	52	1,074
Health Management and Policy	60	-	60
Pre-Health Management and Policy	54	-	54
Health Promotion and Health Behavior	186	-	186
Pre-Housing	4	-	4
Housing Studies	45	-	45
Human Development and Family Sciences	785	-	785
Human Development and Family Studies	-	34	34
Human Performance	-	1	1
Interior Design	124	-	124
Pre-Interiors	70	-	70

ACADEMIC UNIT	UNDER-GRAD	GRAD	TOTAL
<u>College of Health and Human Sciences (Cont.)</u>			
International Studies	3	-	3
Merchandising Management	265	-	265
Movement Studies in Disability	-	5	5
Nutrition	280	13	293
Nutrition and Food Management	1	-	1
Public Health	111	128	239
Non-Degree Health and Human Sciences	25	1	26
TOTAL	3,258	264	3,522

College of Liberal Arts

American Studies	3	-	3
Anthropology	175	-	175
Applied Anthropology	-	38	38
Applied Ethics	-	6	6
Applied Visual Arts	193	-	193
Art ²	70	1	71
Contemporary Hispanic Studies	-	10	10
Creative Writing	-	18	18
Economics	86	5	91
English	276	21	297
Ethnic Studies	25	-	25
French	26	1	27
German	40	1	41
History	267	-	267
History of Science	-	11	11
International Studies	11	-	11
Liberal Studies	712	-	712
Music	118	-	118
Philosophy	63	1	64
Political Science	270	-	270
Pre-Communication	162	-	162
Psychology	642	2	644
Public Policy	-	55	55
Sociology	246	-	246
Spanish ²	113	-	113
Speech Communication	71	1	72
Women Studies	25	-	25
Non-Degree Liberal Arts	66	2	68
TOTAL	3,660	173	3,833

² Includes First Professional student(s).

College of Oceanic and Atmospheric Sciences

Atmospheric Sciences	-	5	5
Fisheries Management	-	18	18
Geophysics	-	6	6
Marine Resource Management	-	30	30
Oceanography	-	54	54
TOTAL	-	113	113

ACADEMIC UNIT	UNDER-GRAD	GRAD	FIRST PROF	TOTAL
<u>College of Pharmacy</u>				
Pharmacy	-	25	-	25
Pharmacy, Doctor of Pharmacy (4-year)	-	-	367	367
TOTAL	-	25	367	392
<u>College of Science</u>				
Applied Physics	-	3	-	3
Biochemistry and Biophysics	163	21	-	184
Biology	737	-	-	737
Botany	44	1	-	45
Botany and Plant Pathology	-	35	-	35
Chemistry	195	88	-	283
Computational Physics	6	-	-	6
Earth Science	28	-	-	28
Entomology	-	13	-	13
Environmental Science	318	1	-	319
General Science	1,018	1	-	1,019
Geographic Information Science	-	34	-	34
Geography	44	29	-	73
Geology	66	41	-	107
International Studies	15	-	-	15
Mathematical Sciences	6	1	-	7
Mathematics	121	65	-	186
Mathematics Education	-	41	-	41
Microbiology	173	32	-	205
Physics	94	38	-	132
Science Education	-	58	-	58
Statistics	-	48	-	48
Water Conflict Management and Transformation	-	4	-	4
Zoology	237	40	-	277
Non-Degree Science	101	10	-	111
Undecided Science Major	21	-	-	21
TOTAL	3,387	604	-	3,991
<u>College of Veterinary Medicine</u>				
Veterinary Medicine - DVM	-	-	217	217
Veterinary Science	-	7	-	7
TOTAL	-	7	217	224
<u>University Exploratory Studies</u>				
	1,011	-	-	1,011
<u>University Honors College³</u>				
Honors Scholar and Honors Associate	625	-	-	625
International Studies	2	-	-	2
	627	-	-	627
³ Honors Scholars and Honors Associates are not counted in the University total.				
TOTAL UNIVERSITY	21,578	3,744	584	25,906

Degree Programs with the Highest Enrollment (Last Year's Rank)

Undergraduate

1. Business Administration* (1)	1,772
2. Education* (2)	1,387
3. Exercise and Sport Science (4)	1,022
4. General Science (3)	1,018
5. Mechanical Engineering* (5)	844
6. Human Development and Family Sciences (7)	785
7. Biology (8)	737
8. Liberal Studies (6)	712
9. Psychology (9)	642
10. Electrical and Computer Engineering* (10)	596

*Includes Pre-Professional

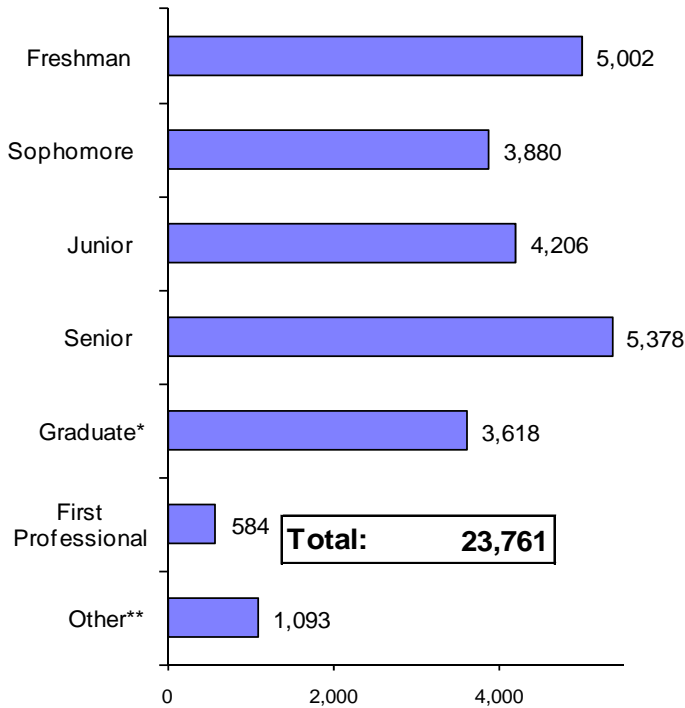
Graduate

1. Electrical and Computer Engineering (1)	168
2. Education (2)	152
3. Business Administration (6)	145
4. Public Health (4)	128
5. Computer Science (3)	127
6. Civil Engineering (8)	117
7. Mechanical Engineering (9)	89
8. Chemistry (7)	88
9. Radiation Health Physics (5)	86
10. Counseling (10)	82

First Professional

1. Pharmacy, Doctor of Pharmacy (4-year)	367
2. Veterinary Medicine - DVM	217

Headcount Enrollment by Class Standing



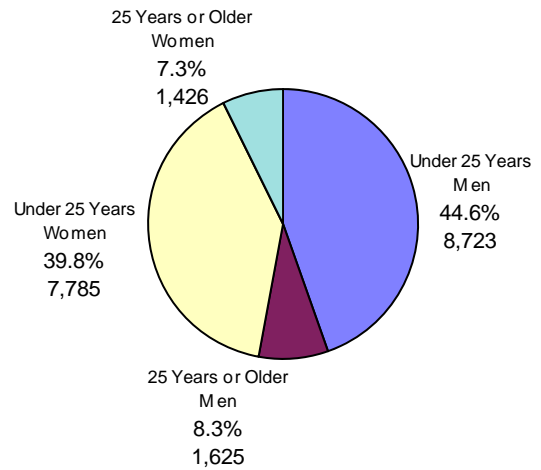
*Includes Non-Degree Graduate Students.

**Includes Non-Degree Undergraduate and Post-Baccalaureate Students.

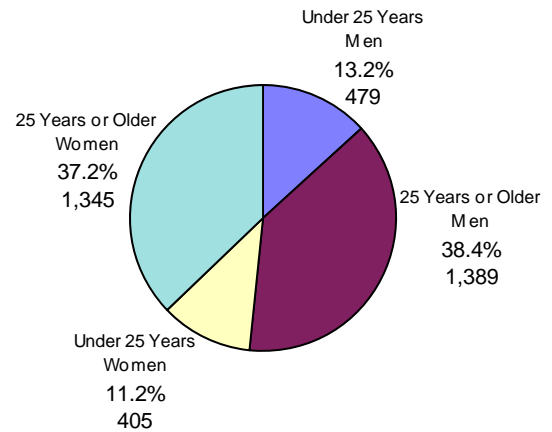
Student Enrollment, Credit Hours, and FTE by Class Standing

Class Standing	Student Enrollment	Student Credit Hours	Student FTE
Freshman	5,002	68,176	4,545.1
Sophomore	3,880	52,946	3,529.7
Junior	4,206	56,781	3,785.4
Senior	5,378	69,492	4,632.8
Post Baccalaureate	517	4,860	324.0
Non-Degree Undergrad	576	4,748	316.5
Total for Undergraduate	19,559	257,003	17,133.5
Masters	1,729	19,059	1,588.2
Doctoral	1,230	15,005	1,667.2
Non-Degree Graduate	659	3,664	305.3
Total for Graduate	3,618	37,728	3,560.8
Doctor of Pharmacy	367	5,868	489.0
Veterinary Medicine	217	4,100	341.7
Total for First Professional	584	9,968	830.7
GRAND TOTAL	23,761	304,699	21,525.0

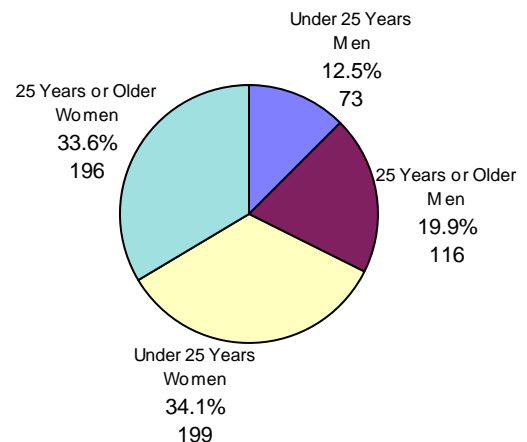
Age of Students Undergraduate



Graduate

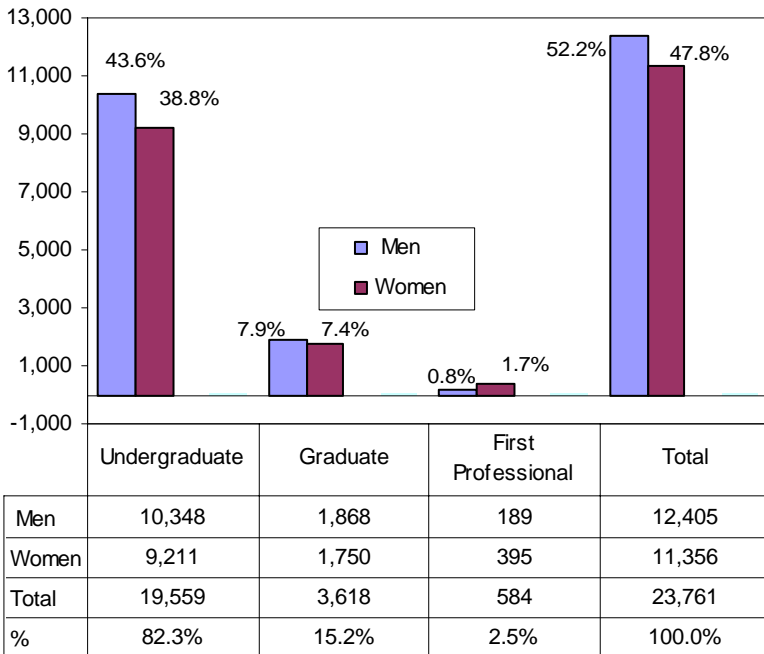


First Professional

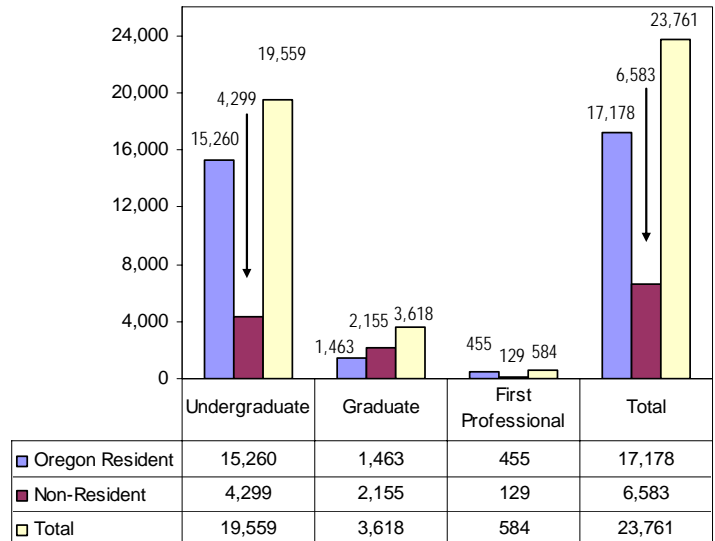


Youngest: 14 years • Oldest: 79 years

Enrollment by Gender and Student Level

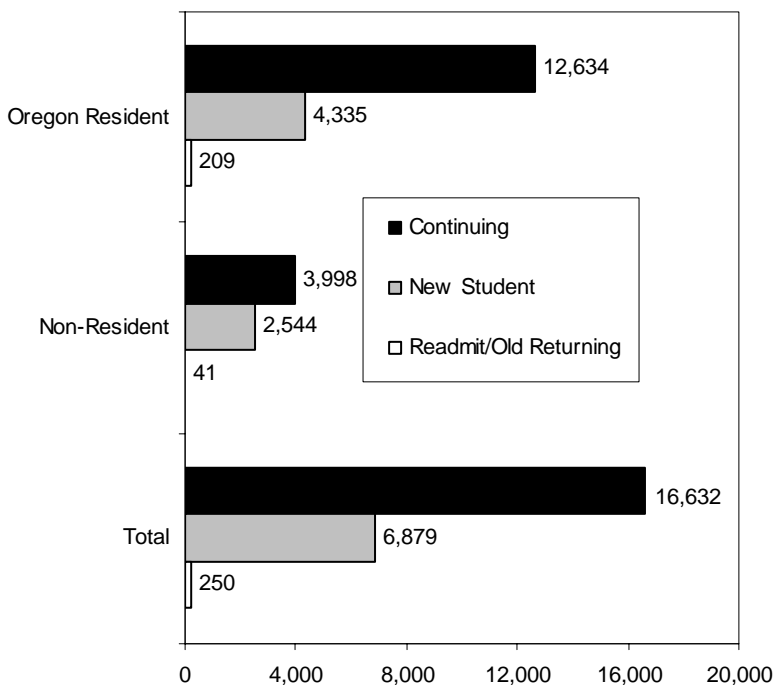


By Residency* and Student Level

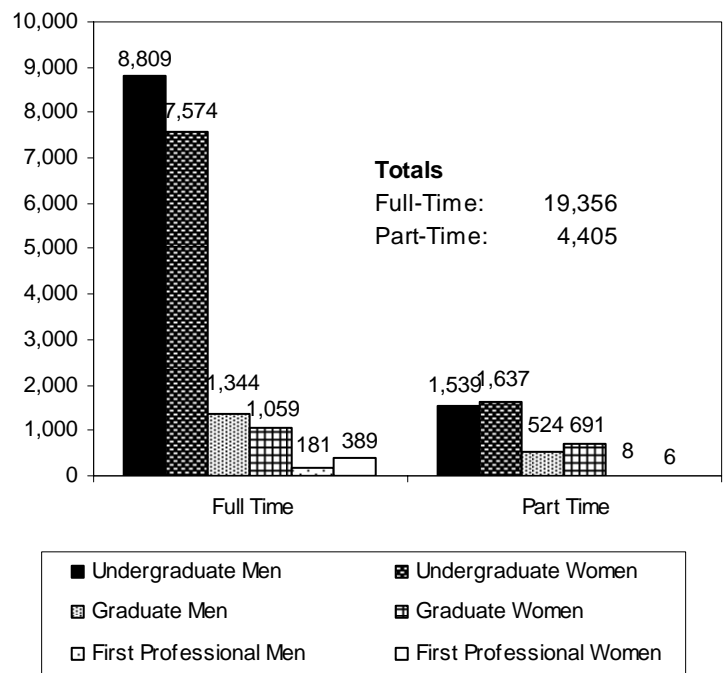


* Residency is based upon tuition and fee status.

All Students by Residency* and Status



Student Enrollment Full Time and Part Time, by Gender



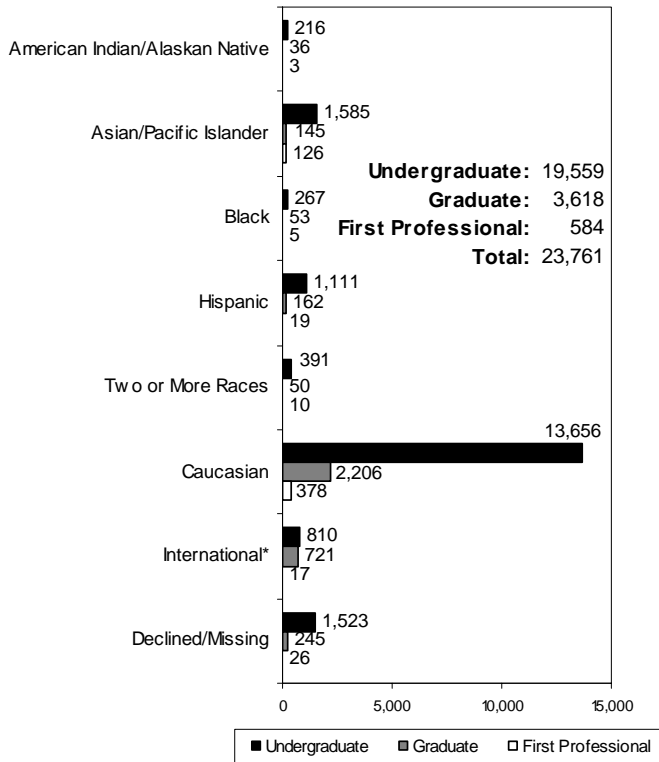
* Residency is based upon tuition and fee status.

Minority Enrollment

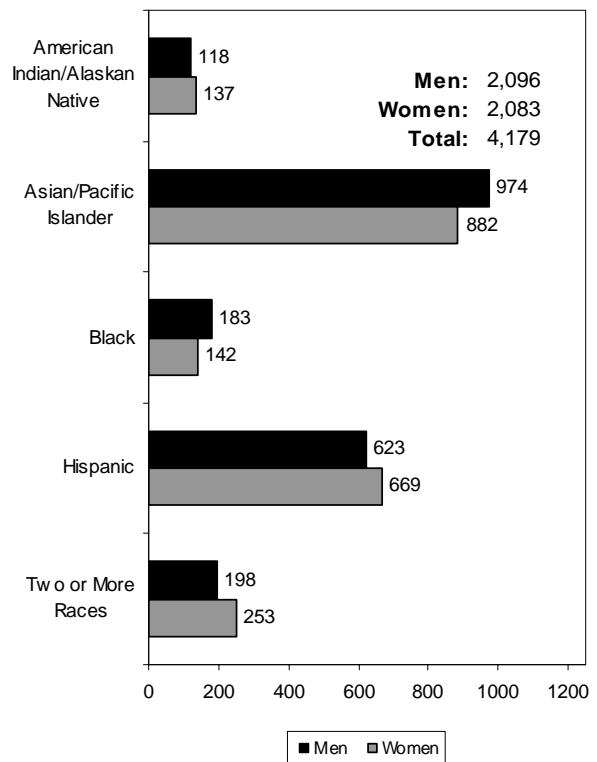
U.S. Minorities by Academic Unit and Student Level

Academic Unit	American Indian/ Native American				Asian/ Pacific Islander				Black				Hispanic				Two or More Races				TOTAL			
	Under-Grad	Grad	First Prof.	Total	Under-Grad	Grad	First Prof.	Total	Under-Grad	Grad	First Prof.	Total	Under-Grad	Grad	First Prof.	Total	Under-Grad	Grad	First Prof.	Total	Under-Grad	Grad	First Prof.	Total
Ag. Sciences	23	3	-	26	42	10	-	52	10	1	-	11	69	11	-	80	34	-	-	34	178	25	-	203
Business	18	-	-	18	193	4	-	197	29	1	-	30	120	5	-	125	41	2	-	43	401	12	-	413
Education	-	7	-	7	2	17	-	19	-	12	-	12	1	35	-	36	1	7	-	8	4	78	-	82
Engineering	33	2	-	35	359	37	-	396	31	8	-	39	178	18	-	196	72	13	-	85	673	78	-	751
Forestry	12	1	-	13	11	-	-	11	4	-	-	4	25	5	-	30	12	-	-	12	64	6	-	70
Graduate School	-	10	-	10	-	31	-	31	-	17	-	17	-	43	-	43	-	15	-	15	-	116	-	116
Health and Human Sci.	34	3	-	37	240	11	-	251	45	7	-	52	209	13	-	222	52	3	-	55	580	37	-	617
Liberal Arts	46	3	-	49	170	5	-	175	82	1	-	83	245	12	-	257	61	4	-	65	604	25	-	629
Oceanic and Atmos. Sci.	-	1	-	1	-	3	-	3	-	-	-	-	-	3	-	3	-	-	-	-	-	7	-	7
Pharmacy	-	-	-	-	-	1	117	118	-	-	5	5	-	-	12	12	-	-	6	6	-	1	140	141
Science	37	6	-	43	504	26	-	530	49	5	-	54	187	17	-	204	79	6	-	85	856	60	-	916
Univ. Explor. Studies	13	-	-	13	64	-	-	64	17	-	-	17	77	-	-	77	39	-	-	39	210	-	-	210
Vet. Medicine	-	-	3	3	-	-	9	9	-	1	-	1	-	-	7	7	-	-	4	4	-	1	23	24
Total	216	36	3	255	1,585	145	126	1,856	267	53	5	325	1,111	162	19	1,292	391	50	10	451	3,570	446	163	4,179

Ethnicity — All Students — by Level

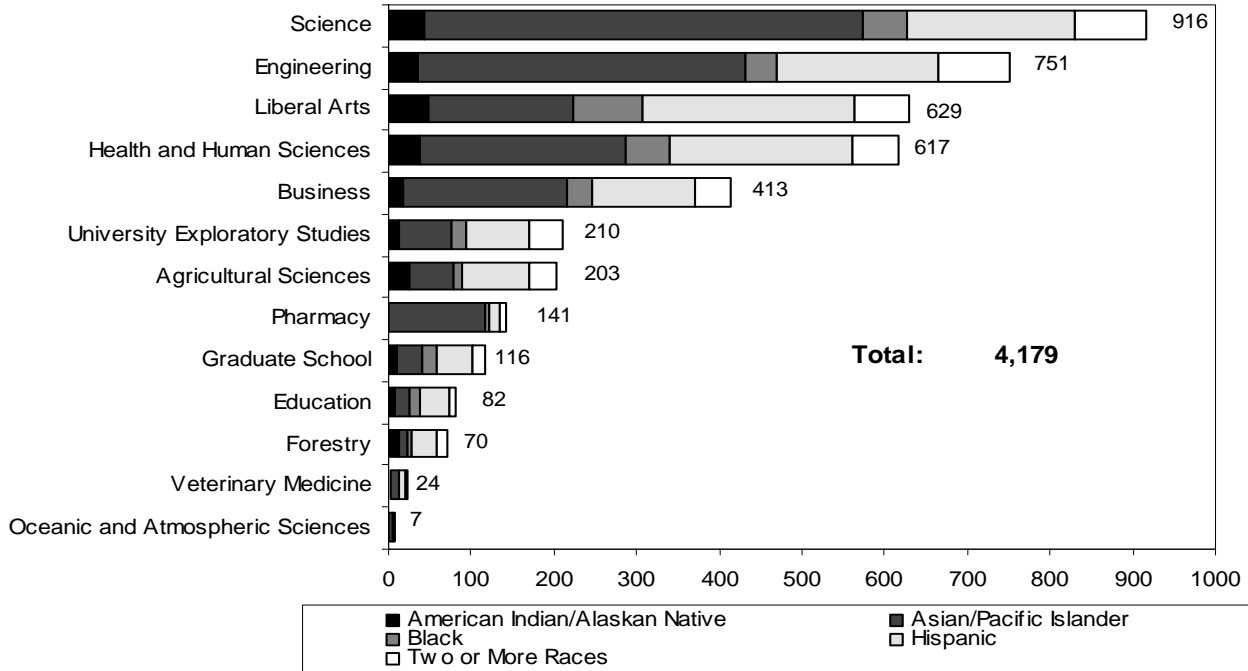


U.S. Minorities by Gender



*International students are identified by citizenship code.

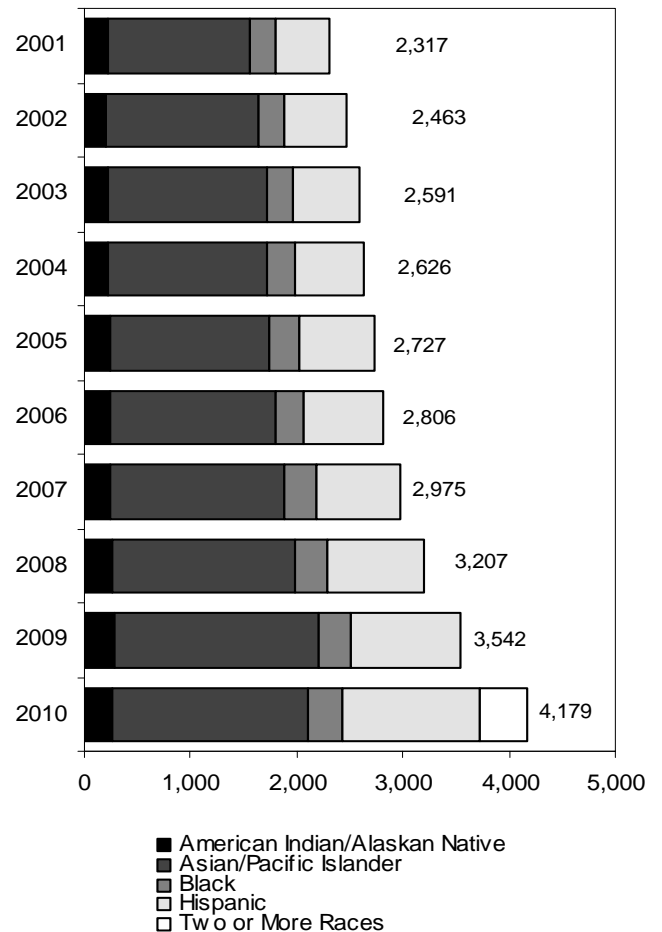
U.S Minorities by Academic Unit



Minority Enrollment by Gender by Academic Unit

Academic Unit	Men	Women	Total
Agricultural Sciences	76	127	203
Business	256	157	413
Education	27	55	82
Engineering	621	130	751
Forestry	37	33	70
Graduate School	50	66	116
Health & Human Sciences	171	446	617
Liberal Arts	271	358	629
Oceanic & Atmospheric Sciences	4	3	7
Pharmacy	50	91	141
Science	414	502	916
Univ. Explor. Studies	116	94	210
Veterinary Medicine	3	21	24
Total	2,096	2,083	4,179

Minority Enrollment Ten-Year Comparison



Minority Enrollment 2006 - 2010

	2006	2007	2008	2009	2010
American Indian/Alaskan Native	245	248	256	292	255
Asian/Pacific Islander	1,554	1,637	1,719	1,905	1,856
Black	275	297	321	321	325
Hispanic	732	793	911	1,024	1,292
Two or More Races	-	-	-	-	451
TOTAL	2,806	2,975	3,207	3,542	4,179
% change	2.9%	6.0%	7.8%	10.4%	18.0%

Enrollment by Geographic Origin

Oregon Counties

Baker	39
Benton	1,765
Clackamas	2,037
Clatsop	152
Columbia	148
Coos	220
Crook	62
Curry	70
Deschutes	737
Douglas	343
Gilliam	8
Grant	30
Harney	25
Hood River	118
Jackson	489
Jefferson	52
Josephine	269
Klamath	196
Lake	42
Lane	1,332
Lincoln	218
Linn	917
Malheur	60
Marion	1,344
Morrow	30
Multnomah	1,929
Polk	434
Sherman	12
Tillamook	105
Umatilla	187
Union	72
Wallowa	26
Wasco	90
Washington	2,926
Wheeler	7
Yamhill	392

Total for Oregon 16,883

United States

Alabama	17
Alaska	132
Arizona	99
Arkansas	11
California	1,478
Colorado	142
Connecticut	28
Delaware	4
District of Columbia	14
Florida	98
Georgia	49
Hawaii	387
Idaho	158
Illinois	89
Indiana	21
Iowa	37
Kansas	20
Kentucky	14
Louisiana	16
Maine	18
Maryland	46
Massachusetts	47
Michigan	54
Minnesota	81

Mississippi	5
Missouri	42
Montana	93
Nebraska	22
Nevada	126
New Hampshire	15
New Jersey	40
New Mexico	46
New York	94
North Carolina	47
North Dakota	10
Ohio	63
Oklahoma	13
Pennsylvania	84
Rhode Island	10
South Carolina	26
South Dakota	15
Tennessee	23
Texas	124
U.S. Possessions/Territories	8
Utah	101
Vermont	13
Virginia	95
Washington	946
West Virginia	14
Wisconsin	49
Wyoming	32

Total for U.S. States 5,216

Foreign Countries*

Afghanistan	1
Albania	2
Argentina	1
Armenia	1
Australia	14
Austria	2
Azerbaijan	2
Bahrain	3
Bangladesh	8
Bolivia	3
Brazil	7
Burma	1
Cambodia	2
Cameroon	2
Canada	46
Chile	5
China, Peoples Republic Of	395
Colombia	7
Costa Rica	3
Croatia	2
Cyprus	1
Czech Republic	2
Denmark	9
Ecuador	11
Egypt	3
El Salvador	1
Eritrea	1
Ethiopia	2
Finland	2
France	23
Germany	25
Ghana	4
Guatemala	2
Hong Kong	17
Hungary	1
India	127
Indonesia	19
Iran	38
Iraq	2
Ireland	1
Israel	4
Japan	41
Jordan	3
Kazakhstan	4
Kenya	4
Kuwait	60
Lebanon	3
Libya	9
Malawi	2
Malaysia	5
Mexico	14
Nepal	7
New Zealand	8
Nigeria	4
Norway	10
Oman, Sultanate Of	1
Pakistan	2
Peru	1
Philippines	4
Poland	2
Qatar	18
Romania	1
Russia	7
Saudi Arabia	165
Senegal	1
Serbia	2
Sierra Leone	1
Singapore, Republic of	2
Slovakia	1
South Africa	4
South Korea	127
Spain	3
Sri Lanka	4
Switzerland	1
Syria	1
Taiwan, Republic of China	49
Tanzania	1
Thailand	73
Tunisia	2
Turkey	3
Uganda	2
Ukraine	7
United Arab Emirates	20
United Kingdom	18
Uruguay	2
Uzbekistan	1
Venezuela	2
Vietnam	16
Yemen	2
Zambia	1
Zimbabwe	1

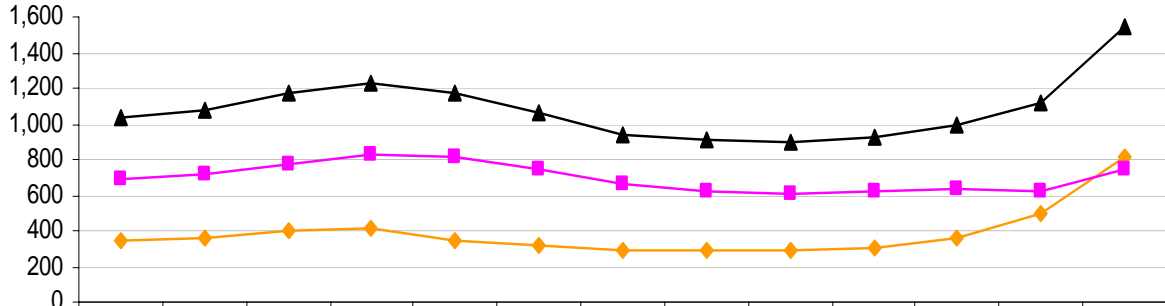
Total for Foreign Countries 1,524

Unknown 138

GRAND TOTAL 23,761

*Foreign countries are based upon country of citizenship.

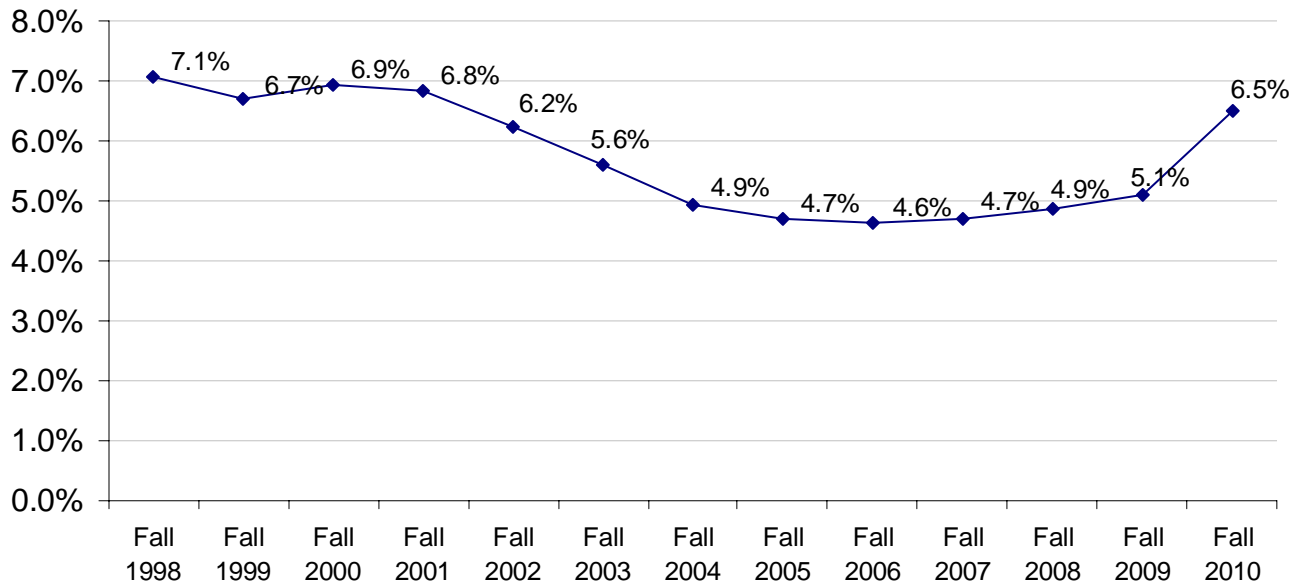
International* Student Enrollment Fall Term 1998 to Fall Term 2010



	Fall 1998	Fall 1999	Fall 2000	Fall 2001	Fall 2002	Fall 2003	Fall 2004	Fall 2005	Fall 2006	Fall 2007	Fall 2008	Fall 2009	Fall 2010
—◆— Undergraduate	351	356	395	410	350	311	287	290	293	309	356	493	810
—■— Graduate**	684	723	771	824	819	750	657	614	604	619	632	627	738
—▲— Total	1,035	1,079	1,166	1,234	1,169	1,061	944	904	897	928	988	1,120	1,548

—◆— Undergraduate —■— Graduate** —▲— Total

The Percentage of OSU Total Enrollment for International Students Fall Term 1998 to Fall Term 2010



*Prior to Fall 2007, international students were identified by Residency Code. Fall 2007-2009, international students were identified by Admit Type code. Fall 2010, international students were identified by citizenship code.

** Includes First Professional Students.

OSU Extended Campus

Enrollment, Credit Hours, and FTE by Class Standing

Students Who Took Courses Through Ecampus*

<u>Class Standing</u>	<u>Student Enrollment</u>	<u>Student Credit Hours</u>	<u>Student FTE</u>
Freshman	471	1,517	101.1
Sophomore	504	2,293	152.9
Junior	902	4,808	320.5
Senior	1,551	8,369	557.9
Post Baccalaureate	224	1,220	81.3
Non-Degree Undergrad	303	1,223	81.5
Total for Undergraduate	3,955	19,430	1,295.3
Masters	266	1,237	103.1
Doctoral	129	631	70.1
Non-Degree Graduate	460	1,804	150.3
Total for Graduate	855	3,672	323.5
Doctor of Pharmacy	1	-	-
Veterinary Medicine	-	-	-
Total for First Professional	1	-	-
GRAND TOTAL (Fall 2010)	4,811	23,102	1,618.9
(Fall 2009)	4,282	19,959	1,405.4

*Table indicates students enrolled in courses offered not only through Ecampus, but also courses at OSU-Corvallis.

Enrollment by Class Standing and Residency

Students Who Took Courses Only Through Ecampus**

<u>Class Standing</u>	<u>Oregon Resident</u>	<u>Non-Resident</u>	<u>Total</u>
Freshman	25	33	58
Sophomore	88	66	154
Junior	165	158	323
Senior	361	265	626
Post Baccalaureate	39	113	152
Non-Degree Undergrad	44	201	245
Total for Undergraduate	722	836	1,558
Masters	126	86	212
Doctoral	47	64	111
Non-Degree Graduate	100	290	390
Total for Graduate	273	440	713
Doctor of Pharmacy	-	-	-
Veterinary Medicine	-	-	-
Total for First Professional	-	-	-
GRAND TOTAL (Fall 2010)	995	1,276	2,271
(Fall 2009)	930	1,116	2,046

**Table indicates students enrolled in only Ecampus-offered courses; i.e., students are not enrolled in any OSU-Corvallis on-campus courses.

Student Credit Hours by Academic Unit* and Class Standing

<u>Academic Unit*</u>	<u>Freshman</u>	<u>Sophomore</u>	<u>Junior</u>	<u>Senior</u>	<u>Post Bac</u>	<u>Non-Degree Undergrad</u>	<u>Undergrad Total</u>	<u>Master</u>	<u>Doctorate</u>	<u>Non-Degree Grad</u>	<u>Grad Total</u>	<u>First Professional</u>	<u>TOTAL</u>
AG	95	265	721	1,564	534	183	3,362	33	6	317	356	-	3,718
BUS	12	56	272	760	12	-	1,112	-	-	16	16	-	1,128
ED	-	3	-	23	9	-	35	678	592	74	1,344	-	1,379
ENGR	16	19	58	139	-	7	239	209	-	35	244	-	483
FOR	12	25	99	372	68	38	614	6	5	136	147	-	761
HHS	89	171	373	455	13	11	1,112	-	-	42	42	-	1,154
LA	531	1,169	2,330	3,720	236	431	8,417	102	16	192	310	-	8,727
OC	24	36	27	4	3	-	94	-	-	13	13	-	107
PHARM	2	10	14	16	2	6	50	-	-	4	4	-	54
SCI	726	520	889	1,239	337	547	4,258	208	9	972	1,189	-	5,447
ALS**	10	10	10	28	-	-	58	-	-	-	-	-	58
IP***	-	9	12	46	6	-	73	-	-	-	-	-	73
GRAD	-	-	3	3	-	-	6	1	3	3	7	-	13
Total SCH	1,517	2,293	4,808	8,369	1,220	1,223	19,430	1,237	631	1,804	3,672	-	23,102
Total FTE	101.1	152.9	320.5	557.9	81.3	81.5	1,295.3	103.1	70.1	150.3	323.5	-	1,618.9

*Academic Units are those that offered the courses. **Academic Learning Services. ***Interdisciplinary Programs.

OSU Extended Campus Student Enrollment by Academic Unit and Ethnicity All Students Who Took Courses Through ECampus

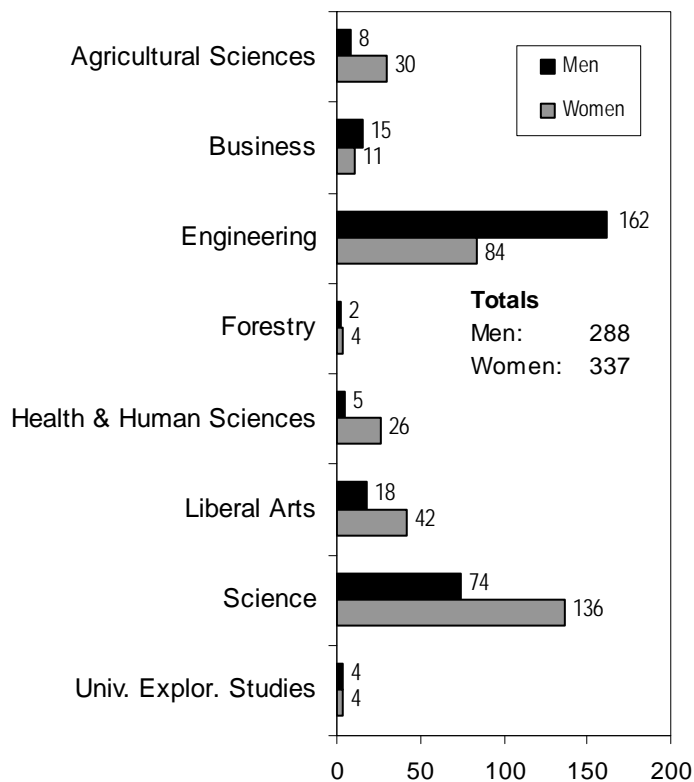
Acad. Unit	American Indian /Alaskan Native		Asian /Pacific Islander		Black		Hispanic		Two or More Races		White		International		Declined to Respond / Missing		TOTAL											
	Under-grad	Grad	Under-grad	Total	Under-grad	Total	Under-grad	Total	Under-grad	Total	Under-grad	Total	Under-grad	Total	Under-grad	Total	Under-grad	Total										
AG	8	-	8	8	9	1	10	5	-	5	22	1	23	11	-	11	378	10	388	8	2	10	51	-	51	492	14	506
BUS	4	-	4	4	32	-	32	11	-	11	17	1	18	12	-	12	219	-	219	15	-	15	28	-	28	338	1	339
ED	-	4	4	4	-	12	12	-	8	8	-	21	21	1	4	5	3	152	155	-	5	5	-	21	21	4	227	231
ENGR	6	2	8	8	32	4	36	5	2	7	7	1	8	5	2	7	199	41	240	36	1	37	20	14	34	310	67	377
FOR	7	1	8	8	4	-	4	3	-	3	11	2	13	5	-	5	294	19	313	3	-	3	57	1	58	384	23	407
HHS	4	-	4	4	32	-	32	11	-	11	26	2	28	13	-	13	355	3	358	8	1	9	39	1	40	488	7	495
LA	12	-	12	12	43	-	43	40	-	40	71	-	71	19	-	19	741	6	747	12	-	12	135	1	136	1,073	7	1,080
OC	-	-	-	-	-	-	-	-	-	-	-	1	1	-	-	-	-	14	14	-	2	2	-	1	1	-	18	18
SCI	9	1	10	10	50	-	50	17	2	19	41	6	47	13	2	15	414	71	485	20	3	23	60	14	74	624	99	723
VM*	-	-	-	-	-	-	-	-	-	-	-	-	-	-	-	-	-	1	1	-	-	-	-	-	-	-	1	1
GRAD	-	5	5	5	-	15	15	-	14	14	-	23	23	-	6	6	-	284	284	-	10	10	-	35	35	-	392	392
UESP	2	-	2	2	14	-	14	8	-	8	16	-	16	8	-	8	168	-	168	6	-	6	20	-	20	242	-	242
Total	52	13	65	65	216	32	248	100	26	126	211	58	269	87	14	101	2,771	601	3,372	108	24	132	410	88	498	3,955	856	4,811

University Honors College Students By Academic Unit and Student Class Standing

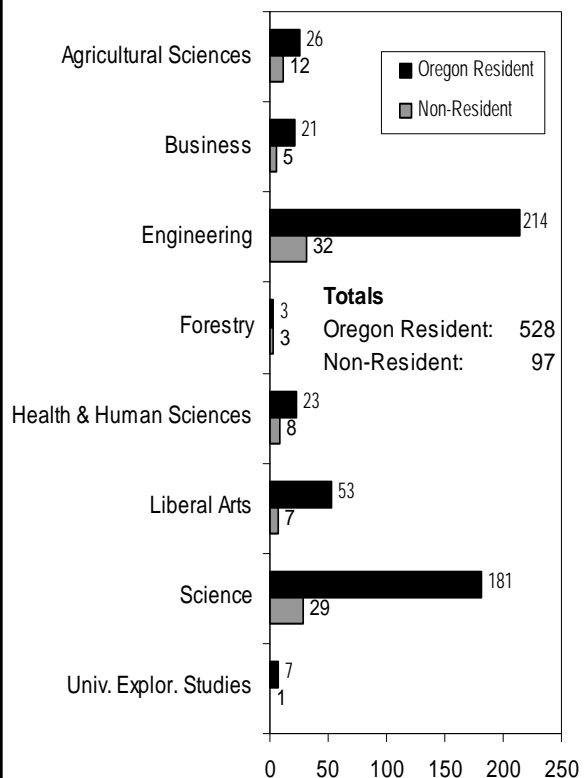
Academic Unit	Freshman	Sophomore	Junior	Senior	Total	% of Undergrad Enrollment for College
Agricultural Sciences	8	9	6	15	38	2.6
Business	5	7	3	11	26	1.1
Engineering	53	57	61	75	246	6.0
Forestry	-	1	1	4	6	0.8
Health and Human Sciences	6	10	5	10	31	1.0
Liberal Arts	9	10	13	28	60	1.7
Science	46	55	40	69	210	6.3
University Exploratory Studies	6	2	-	-	8	0.8
TOTAL*	133	151	129	212	625	3.2

*The total may include students who are participating in MECOP, Study Abroad, or other experiential learning programs.

By Academic Unit and Gender



By Academic Unit and Residency



Cascades Campus Enrollment

Fall Term 2010

Tier	Enrollment Type	Institution Providers	Headcount	Term FTE
1 & 2*	OSU-Cascades	OSU, UO	678	409.7
Total OSU-Cascades Enrollment			678	409.7
3**	OSU Admitted Non-Enrolled	COCC	169	129.7
Total Students Receiving Services			847	539.4

*Source: Institutional Research Services, Oregon University System.

**Source: OSU-Cascades.

Oregon State University – Cascades Campus, Tier 1 and Tier 2

Enrollment at-a-Glance		
	Head Count	Percent
Women	432	63.7%
Men	245	36.1%
Unknown	1	0.1%
Full-time	243	35.8%
Part-time	435	64.2%
Undergraduate	574	84.7%
Graduate	104	15.3%
U.S Minorities	57	8.4%
Oregon Residents	649	95.7%
Non-Residents	29	4.3%
Undergrad <25	224	33.0%
Undergrad 25 & older	350	51.6%
Graduate <25	10	1.5%
Graduate 25 & older	94	13.9%
Total	678	100%

Student Credit Hours, Full-Time Equivalence, and Enrollment by Student Level					
Student Level		(FTE*)	Student Credit Hours	Student FTE	Student Enrollment
Admitted	Undergrad	Freshman (15)	76	5.1	12
		Sophomore (15)	427	28.5	66
		Junior (15)	1813	120.9	211
		Senior (15)	2190	146.0	228
		Postbac Undergrad (15)	226	15.1	27
	SubTotal	4,732	315.5	544	
	Graduate	Masters (12)	1021	85.1	103
Doctorate (9)		0	0.0	0	
SubTotal		1021	85.1	103	
Total			5,753	400.6	647
Nonadmitted	NU, NG	Nonadm UG (15)	133	8.9	30
		Nonadm GR (12)	3	0.3	1
	SubTotal	136	9.1	31	
	Total			136	9.1
Total			5,889	409.7	678

*FTE divisor: Undergraduate and Nonadmitted Undergraduate: 15 credits; Master's, Professional, and Nonadmitted Graduate: 12 credits; Doctoral: 9 credits.

INTO Oregon State University Fall Term 2010 Enrollment Summary

Enrollment by Student Type		
Student Type	Headcount	Percent
INTO OSU Academic English	265	50.0%
INTO OSU General English	42	7.9%
INTO OSU Graduate Pathways	70	13.2%
INTO OSU Undergraduate Pathways	153	28.9%
Total	530	100.0%

Enrollment by Gender		
Gender	Headcount	Percent
Female	166	31.3%
Male	364	68.7%
Total	530	100.0%

Enrollment by Age Group		
Age Group	Headcount	Percent
25 and Older	86	16.2%
Less than 25	444	83.8%
Total	530	100.0%

Enrollment by Country		
COUNTRY OF CITIZENSHIP	Headcount	Percent
Bahrain	1	0.2%
Burma	1	0.2%
China, Peoples Republic	201	37.9%
Colombia	9	1.7%
Denmark	1	0.2%
Hong Kong	13	2.5%
Hungary	1	0.2%
India	2	0.4%
Indonesia	4	0.8%
Iraq	1	0.2%
Japan	31	5.8%
Kazakhstan	2	0.4%
Kuwait	20	3.8%
Libya	5	0.9%
Qatar	7	1.3%
Russia	7	1.3%
Saudi Arabia	113	21.3%
South Korea	54	10.2%
Taiwan - Republic of China	25	4.7%
Thailand	14	2.6%
United Arab Emirates	11	2.1%
United States of America	4	0.8%
Vietnam	3	0.6%
Total	530	100.0%

INTO OSU Undergrad Pathways - Enrollment by College and Major		
College	Major	Headcount
College of Business	Pre-Business	74
College of Business	Pre-MBA	44
College of Engineering	Chemical Engineering	5
College of Engineering	Civil Engineering	2
College of Engineering	Computer Science	9
College of Engineering	Construction Engineering Management	2
College of Engineering	Electrical and Computer Engineering	5
College of Engineering	Environmental Engineering	1
College of Engineering	Mechanical Engineering	3
College of Engineering	Pre-General Engineering	56
College of Science	General Science	10
Intensive English Program	Academic English	251
Intensive English Program	Study Abroad with English	5
Non-Credit	General English	44
University Exploratory Study	University Exploratory Studies	19
Total		530

Source: Office of Institutional Research.

History of Student Enrollment

Fall Term Headcount - 4th Week

Academic Year	Undergraduate	Graduate	First Professional	TOTAL	% CHANGE
1991-92	12,070	2,778	67	14,915	-6.9
1992-93	11,430	2,835	71	14,336	-3.9
1993-94	11,261	2,938	65	14,264	-0.5
1994-95	11,221	3,034	68	14,323	0.4
1995-96	11,280	2,805	76	14,161	-1.1
1996-97	11,019	2,677	88	13,784	-2.7
1997-98	11,382	2,656	89	14,127	2.5
1998-99	11,998	2,539	81	14,618	3.5
1999-00	13,167	2,773	151	16,091	10.1
2000-01	13,772	2,789	227	16,788	4.3
2001-02	14,877	2,868	289	18,034	7.4
2002-03	15,413	3,015	361	18,789	4.2
2003-04	15,599	2,988	392	18,979	1.0
2004-05	15,713	3,000	449	19,162	1.0
2005-06	15,747	2,976	513	19,236	0.4
2006-07	15,829	3,001	532	19,362	0.7
2007-08	16,228	2,994	531	19,753	2.0
2008-09	16,673	3,095	552	20,320	2.9
2009-10	18,067	3,328	574	21,969	8.1
2010-11	19,559	3,618	584	23,761	8.2

Highlights

- For Fall 2010, total enrollment was 23,761 students.
- When Fall 2009 and Fall 2010 are compared, the total enrollment increased by 1,792 students or 8.2% (from 21,969 to 23,761), the FTE increased by 8.2%, and the Student Credit Hours increased by 8.2%.
- The number of part-time students increased by 7.2% (from 4,108 to 4,405).
- When compared to Fall 2009, the undergraduate enrollment increased by 1,492 students, or 8.3% (from 18,067 to 19,559); the graduate enrollment increased by 8.7% (from 3,328 to 3,618); the first professional enrollment increased by 1.7% (from 574 to 584).
- When compared to Fall 2009, Oregon residents increased by 3.0%; non-resident increased by 24.2%; and international student enrollment increased by 38.2%.
- University Honors College had an enrollment of 625.
- INTO OSU had a total enrollment of 530: 265 in Academic English program, 42 INTO OSU General Pathways, 70 INTO OSU Graduate Pathways, and 153 in Undergraduate Pathway program.
- The College of Engineering had the largest student enrollment (4,936) when compared to the other academic units.
- OSU Extended Campus had 4,811 students, an increase of 12.4% compared to 2009. These students took 23,102 credits, of which 37.8% were from the College of Liberal Arts, while 23.6% were from the College of Science.
- The percentage of U.S. minority students was 17.6% of the total enrollment. The number of minority students increased by 18.0% when compared to Fall 2009 (from 3,542 to 4,179).
- Most popular undergraduate majors for Fall 2010 were:

Business Administration	1,772
Education	1,387
Exercise and Sport Science	1,022
General Science	1,018
Mechanical Engineering	844
- The ratio of Admitted to Applications was 69.1%. The ratio of Enrolled to Admitted was 48.8%.

Source: Fall Term 2010, 4th Week Student Data Extract File.

Comments about this publication are welcome.

Please contact the staff in the Office of Institutional Research, Kerr Administration Building (541-737-9600).