

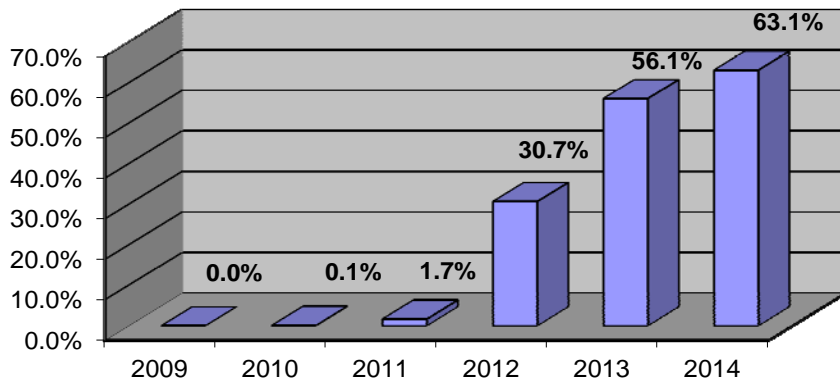
**Oregon State University**  
**Movement in Primary College**  
**Fall Term 2008 Cohort Class**

This is a study of the cohort of first time, full time (credit hours greater than or equal to 12) degree seeking undergraduate students enrolled in the Fall Term of 2008. This study allows a college to track retention, attrition, graduation, and the migration of their students over six years spanning 2008 - 2014. Detailed information tracks student movement to and from the various colleges based upon a student's primary major.

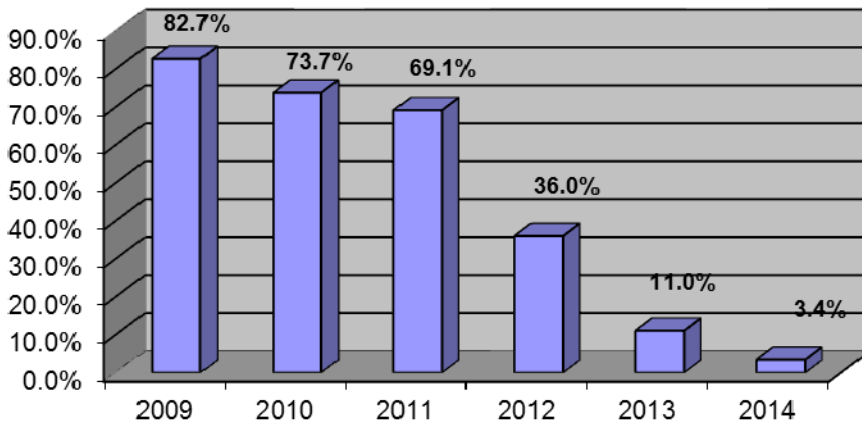
There were 3003 students in the cohort for Fall Term 2008 that were enrolled in colleges/programs at the university. Table 1 contains the student graduation, retention, and attrition numbers and percentages for 2012 (4-year), 2013 (5-year) and 2014 (6-year). The data show that in Fall Term 2014, there were 102 students from the cohort continuing their study at the university. Figures 1, 2, and 3 depict the graduation, retention, and attrition rates by year for the Fall Term 2008 cohort class. The six-year graduation rate for Fall Term 2008 cohort was 63.1%. The first year retention rate for the Fall Term 2008 cohort was 82.7% which also can be stated in terms of an attrition rate of 17.3% which means that 17.3% of the students in the cohort did not return for their 2<sup>nd</sup> year.

<b>Table 1: Fall Term 2008 Cohort Graduation, Retention, and Attrition Rates</b>						
<b>Fall 2008 Cohort</b>	<b>2012</b>		<b>2013</b>		<b>2014</b>	
	Number	Percentage	Number	Percentage	Number	Percentage
Graduation	922	30.7%	1,685	56.1%	1,896	63.1%
Continuation	1,081	36.0%	331	11.0%	102	3.4%
Attrition	1,000	33.3%	987	32.9%	1,005	33.5%
<b>Total</b>	<b>3,003</b>	<b>100.0%</b>	<b>3,003</b>	<b>100.0%</b>	<b>3,003</b>	<b>100.0%</b>

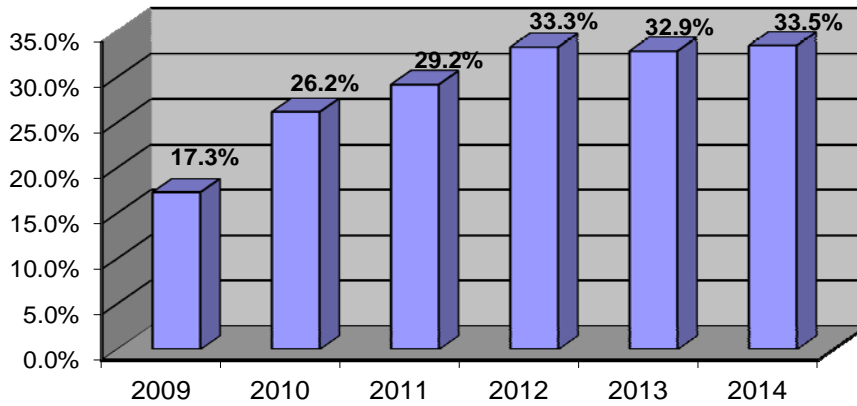
**Figure 1: Graduation Rate by Year**



**Figure 2: Retention Rate by Year**



**Figure 3: Attrition Rate by Year**



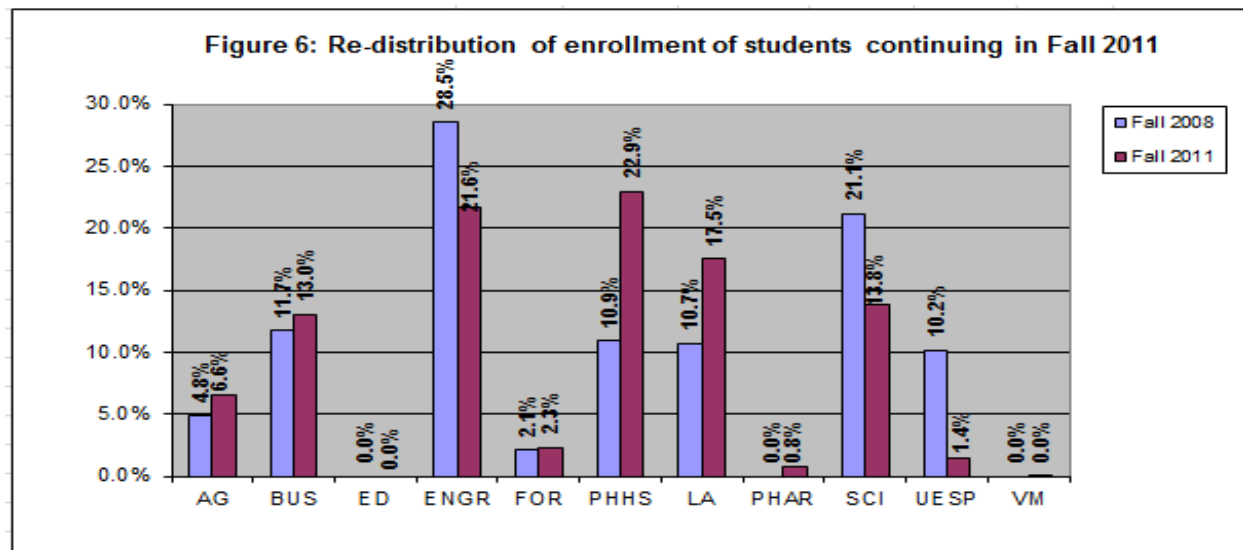
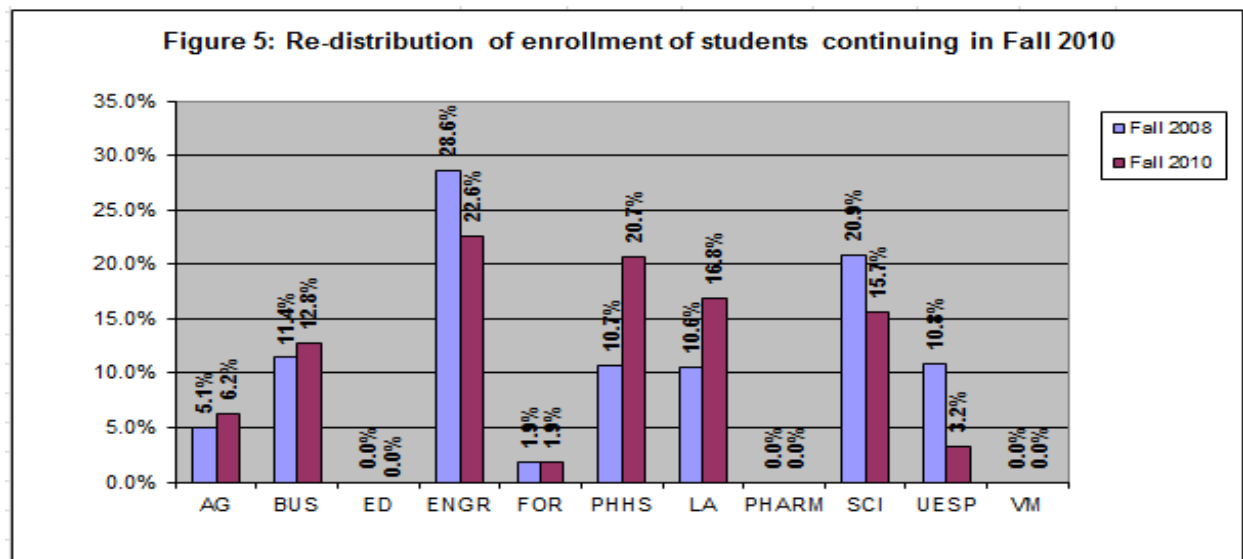
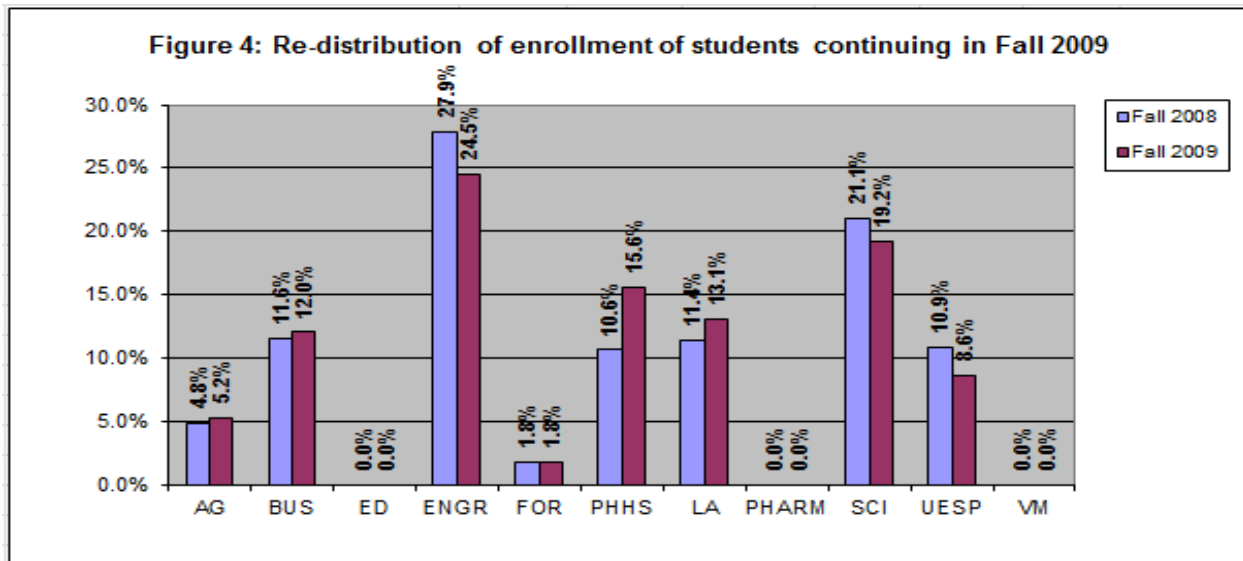
Fairly large populations of the students graduated from a different college than the one in which they initially enrolled. Table 2 provides a comparison for the students who graduated from the colleges where they initially enrolled with those who transferred to another college within OSU before graduating. By the end of Summer Term 2014, 1155 students (60.9% of the 2008 cohort) graduated from the same college which means that 741 students (almost 40%) transferred to another college before completing their degree. Students who stayed in the same college in which they originally enrolled graduated sooner than those who transferred.

Fall 2008 Cohort	2012		2013		2014	
	Number	Percentage	Number	Percentage	Number	Percentage
From the same college	612	66.4%	1,064	63.1%	1,155	60.9%
From other colleges	310	33.6%	621	36.9%	741	39.1%
<b>Total graduation</b>	<b>922</b>	<b>100.0%</b>	<b>1,685</b>	<b>100.0%</b>	<b>1,896</b>	<b>100.0%</b>

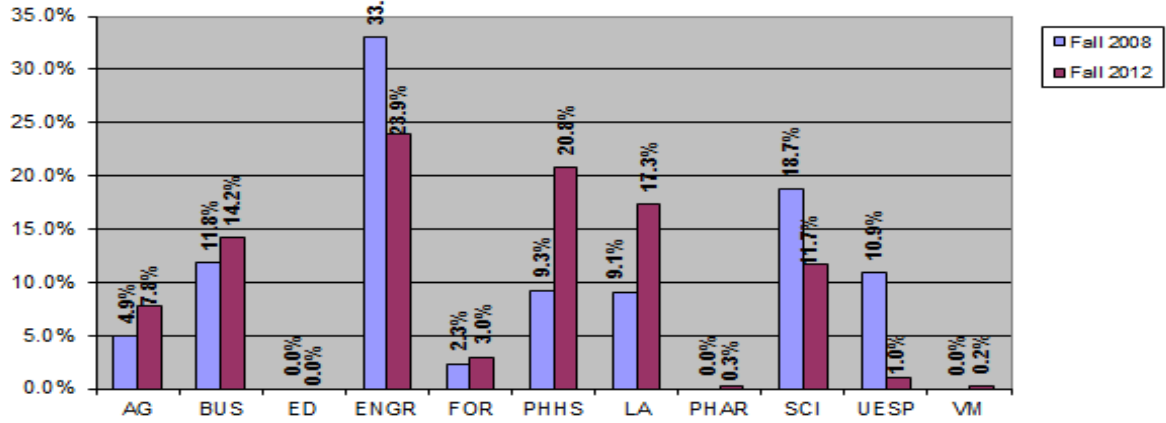
Students who continued may find out that their initial choice of study is either not as interesting as they initially thought or that they may not be suited for the academic demands of a particular program of study. Table 3 contains the net gains and losses of students by college for each year. The Colleges of Engineering, Science, and the University Exploratory Studies Program consistently show net losses as students transferred to other colleges.

	2009	2010	2011	2012	2013	2014
<b>Agricultural Sciences</b>	11	26	37	31	13	5
<b>Business</b>	11	31	27	25	7	1
<b>Education</b>	0	0	0	0	0	0
<b>Engineering</b>	-84	-133	-143	-99	-47	-11
<b>Forestry</b>	-1	0	4	7	3	0
<b>Public Health and Human Sciences</b>	124	221	250	125	40	3
<b>Liberal Arts</b>	42	139	141	89	27	12
<b>Pharmacy</b>	0	0	16	3	0	0
<b>Science</b>	-46	-115	-152	-76	-13	-5
<b>University Exploratory Studies Program</b>	-57	-169	-181	-107	-32	-7
<b>Veterinary Medicine</b>	0	0	1	2	2	2

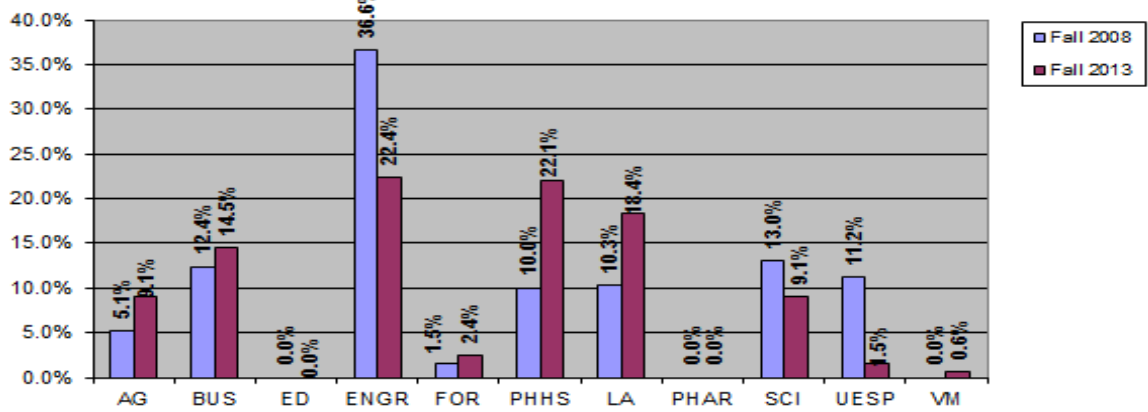
Details on the redistribution of continuing students are provided in Figures 4-9.



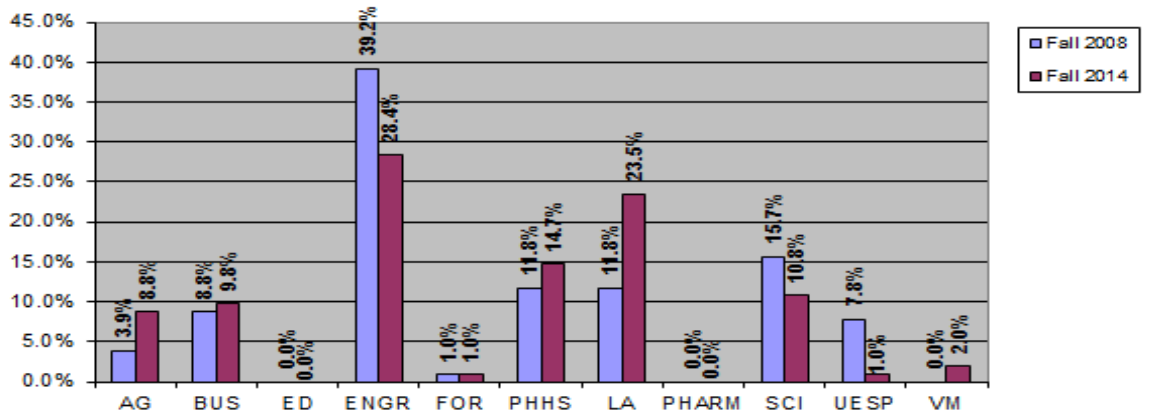
**Figure 7: Re-distribution of enrollment of students continuing in Fall 2012**



**Figure 8: Re-distribution of enrollment of students continuing in Fall 2013**



**Figure 9: Re-distribution of enrollment of students continuing in Fall 2014**



Tables 4-9 contain retention and graduation data for each college from Fall 2008 to Fall 2014 for the Fall 2008 cohort. The shaded columns in the top table on each page denote the college that students moved to, listed by college. For example, in Table 4, the College of Agricultural Sciences has 147 students in Fall Term 2008 cohort class. 28 Agricultural Sciences students left OSU after their first year. Of those who stayed, 105 continued in Agricultural Sciences, 1 transferred to Business, 1 to Engineering, 4 to Public Health and Human Sciences, 3 to Liberal Arts, and 5 transferred to Science. The total of students transferring to other colleges is 14 which results in a 9.5% transfer rate (14/147). The 1-year attrition rate for the college of Agriculture Sciences is 19% which is calculated by dividing the number of students who did not return to OSU by the original cohort (28/147). The overall retention rate at OSU for this cohort of Agricultural Sciences students was 81.0%.

The second table on each page contains the net gain or loss by college for the freshman cohort. Again, for Agricultural Sciences, 7 students were gained from Engineering, 3 from Science, and 5 from University Exploratory Studies Program. At the same time, 3 Agricultural Sciences students transferred to Public Health and Human Sciences, and 1 transferred to Liberal Arts. These changes resulted in a net gain of 11 students.

Over the course of this study, Agricultural Sciences, Business, Public Health and Human Sciences and Liberal Arts consistently gained students from other colleges. University Exploratory Studies Program consistently transferred more students to other colleges; this is expected given the purpose of University Exploratory Studies Program. With University Exploratory Studies Program omitted, the College of Engineering and the College of Sciences had the most students transferring to other OSU colleges over the course of the study.

The graduation results for this cohort begin in Table 5, Fall 2008 to Fall 2010 but for explanatory purposes we'll reference Table 6 (2008-2011) since there are more examples. Table 6 shows that the original freshman cohort totaled 3003 and that a total of 50 students graduated resulting in a 3-year graduation rate of 1.7% (50 / 3003). Of

the 50 graduates, 38 students graduated from the college where they initially enrolled and 12 students graduated after transferring to another college within OSU. Detail information reveals that of the 50 total graduates, 5 graduated from Agricultural Sciences. All 5 students graduated from Agricultural Sciences (none of the students transferred to another program within OSU). The Agricultural Sciences total cohort is 147. Therefore, the 3-year graduation rate for Agricultural Sciences is 3.4% (5/147). The next detail line shows that there were also 5 graduates from the college of Business. 4 students from this cohort graduated from the college of Business and 1 student graduated after transferring to another college within OSU.

After four years (Table 7) the total number of graduates increased to 922 giving a 30.7% 4-year graduation rate. 49 students graduated from the Agricultural Sciences cohort of 147 resulting in a 33.3% graduation rate. 8 of the initial Agricultural Sciences cohort transferred to another college before graduating.

For the fifth year (Table 8), 86 students in the Agricultural Sciences cohort had graduated; however, only 65 students graduated from Agricultural Sciences. The other 21 students graduated from other OSU colleges. The overall five-year graduation rate for the University is 56.1%

The six year (Table 9) graduation rate for Agricultural Sciences was 65.3% with a total of 72 students from the Agricultural Sciences cohort graduating in Agricultural Sciences and 24 graduating from other OSU colleges. OSU's 6-year overall graduation rate is 63.1% - a total of 1896 graduates. Of the total graduates 1155 (60.9%) graduated from the same college of initial enrollment and 741 (39.1%) transferred to another college within OSU before graduating.

**Table 4: Fall 2008 First Time, Full Time, Degree Seeking Undergraduate Student Cohort  
Movement Study ( Fall 2008 - Fall 2009 )**

COLLEGE	Cohort 2008	Grad. Rate	Grad. Rate	Attr. Rate	Attr. Rate	College Movement Pattern												Cont. Rate		Rate
						AG	BUS	ED	ENGR	FOR	PHHS	LA	PHAR	SCI	UESP	VM	Subtotal	Trans.*	College**	
Agricultural Sciences	147	0	0%	28	19.0%	105	1	0	1	0	4	3	0	5	0	0	119	9.5%	71.4%	81.0%
Business	357	0	0%	70	19.6%	1	239	0	2	0	23	11	0	4	7	0	287	13.4%	66.9%	80.4%
Education	0	0	0%	0	0.0%	0	0	0	0	0	0	0	0	0	0	0	0	0.0%	0.0%	0.0%
Engineering	808	0	0%	116	14.4%	8	28	0	579	4	5	26	0	20	22	0	692	14.0%	71.7%	85.6%
Forestry	52	0	0%	7	13.5%	0	2	0	1	35	3	1	0	3	0	0	45	19.2%	67.3%	86.5%
Public Health & Human Sciences	318	0	0%	54	17.0%	1	2	0	0	1	248	3	0	5	4	0	264	5.0%	78.0%	83.0%
Liberal Arts	330	0	0%	47	14.2%	2	6	0	3	1	27	227	0	10	7	0	283	17.0%	68.8%	85.8%
Pharmacy	0	0	0%	0	0.0%	0	0	0	0	0	0	0	0	0	0	0	0	0.0%	0.0%	0.0%
Science	653	0	0%	130	19.9%	8	7	0	11	0	38	26	0	416	17	0	523	16.4%	63.7%	80.1%
University Exploratory Studies Program	338	0	0%	68	20.1%	5	13	0	11	3	40	28	0	14	156	0	270	33.7%	46.2%	79.9%
Veterinary Medicine	0	0	0%	0	0%	0	0	0	0	0	0	0	0	0	0	0	0	0.0%	0.0%	0.0%
<b>TOTAL</b>	<b>3,003</b>	<b>0</b>	<b>0%</b>	<b>520</b>	<b>17.3%</b>	<b>130</b>	<b>298</b>	<b>0</b>	<b>608</b>	<b>44</b>	<b>388</b>	<b>325</b>	<b>0</b>	<b>477</b>	<b>213</b>	<b>0</b>	<b>2,483</b>	<b>82.7%</b>		<b>82.7%</b>

\* Percentage of students transferred to other colleges from the college they originally enrolled in Fall 2008.

\*\* Percentage of students continued in the same college as they originally enrolled in.

**Table 4.1 Fall 2008 First Time, Full Time, Degree Seeking Undergraduate Student Cohort  
Net Gain / Loss by College ( Fall 2008 - Fall 2009 )**

COLLEGE	AG	BUS	ED	ENGR	FOR	PHHS	LA	PHARM	SCI	UESP	VM	Net Gain / Loss	Continued from original cohort		Fall 2009 Enrollment	
													%	%	#	%
Agricultural Sciences	0	0	0	7	0	-3	-1	0	3	5	0	11	119	4.8%	130	5.2%
Business	0	0	0	26	2	-21	-5	0	3	6	0	11	287	11.6%	298	12.0%
Education	0	0	0	0	0	0	0	0	0	0	0	0	0	0.0%	0	0.0%
Engineering	-7	-26	0	0	-3	-5	-23	0	-9	-11	0	-84	692	27.9%	608	24.5%
Forestry	0	-2	0	3	0	-2	0	0	-3	3	0	-1	45	1.8%	44	1.8%
Public Health & Human Sciences	3	21	0	5	2	0	24	0	33	36	0	124	264	10.6%	388	15.6%
Liberal Arts	1	5	0	23	0	-24	0	0	16	21	0	42	283	11.4%	325	13.1%
Pharmacy	0	0	0	0	0	0	0	0	0	0	0	0	0	0.0%	0	0.0%
Science	-3	-3	0	9	3	-33	-16	0	0	-3	0	-46	523	21.1%	477	19.2%
University Exploratory Studies Program	-5	-6	0	11	-3	-36	-21	0	3	0	0	-57	270	10.9%	213	8.6%
Veterinary Medicine	0	0	0	0	0	0	0	0	0	0	0	0	0	0.0%	0	0.0%
<b>Total</b>												<b>0</b>	<b>2,483</b>	<b>100%</b>	<b>2,483</b>	<b>100%</b>



**Table 5: Fall 2008 First Time, Full Time, Degree Seeking Undergraduate Student Cohort  
Movement Study ( Fall 2008 - Fall 2010 )**

COLLEGE	Cohort 2008	Grad. Total	Same college*	Other college**	Grad. Rate	Attr. Rate	Attr. Rate	College Movement Pattern												Cont. Rate		Retention Rate
								AG	BUS	ED	ENGR	FOR	PHHS	LA	PHAR	SCI	UESP	VM	Subtotal	Trans.	College	
Agricultural Sciences	147	0	0	0	0.0%	35	23.8%	90	3	0	1	0	5	6	0	6	1	0	112	15.0%	61.2%	76.2%
Business	357	0	0	0	0.0%	104	29.1%	4	181	0	4	0	31	24	0	6	3	0	253	20.2%	50.7%	70.9%
Education	0	0	0	0	0.0%	0	0.0%	0	0	0	0	0	0	0	0	0	0	0	0	0.0%	0.0%	0.0%
Engineering	808	2	0	2	0.2%	172	21.3%	11	48	0	473	6	16	39	0	23	18	0	634	19.9%	58.5%	78.5%
Forestry	52	0	0	0	0.0%	10	19.2%	1	1	0	1	29	6	2	0	2	0	0	42	25.0%	55.8%	80.8%
Public Health & Human Sciences	318	1	1	0	0.3%	80	25.2%	2	5	0	0	0	211	12	0	5	2	0	237	8.2%	66.4%	74.5%
Liberal Arts	330	0	0	0	0.0%	96	29.1%	2	6	0	5	1	35	175	0	10	0	0	234	17.9%	53.0%	70.9%
Pharmacy	0	0	0	0	0.0%	0	0.0%	0	0	0	0	0	0	0	0	0	0	0	0	0.0%	0.0%	0.0%
Science	653	0	0	0	0.0%	191	29.2%	17	12	0	14	1	76	42	0	295	5	0	462	25.6%	45.2%	70.8%
University Exploratory Studies Program	338	0	0	0	0.0%	98	29.0%	11	20	0	11	5	78	73	0	15	27	0	240	63.0%	8.0%	71.0%
Veterinary Medicine	0	0	0	0	0.0%	0	0.0%	0	0	0	0	0	0	0	0	0	0	0	0	0.0%	0.0%	0.0%
<b>TOTAL</b>	<b>3,003</b>	<b>3</b>	<b>1</b>	<b>2</b>	<b>0.1%</b>	<b>786</b>	<b>26.2%</b>	<b>138</b>	<b>276</b>	<b>0</b>	<b>509</b>	<b>42</b>	<b>458</b>	<b>373</b>	<b>0</b>	<b>362</b>	<b>56</b>	<b>0</b>	<b>2,214</b>	<b>73.7%</b>		<b>73.7%</b>

\* Number of students graduated from the colleges same as that they enrolled originally in Fall 2008.

\*\* Number of students transferred to other colleges from their originally enrolled cohort college and graduated from the colleges they've transferred to.

**Table 5.1: Fall 2008 First Time, Full Time, Degree Seeking Undergraduate Student Cohort  
Net Gain / Loss by College ( Fall 2008- Fall 2010 )**

COLLEGE	AG	BUS	ED	ENGR	FOR	PHHS	LA	PHARM	SCI	UESP	VM	Net Gain/Loss	Continued from original cohort		Fall 2010 Enrollment	
													%	%	#	%
Agricultural Sciences	0	1	0	10	1	-3	-4	0	11	10	0	26	112	5.1%	138	6.2%
Business	-1	0	0	52	1	-26	-18	0	6	17	0	31	253	11.4%	284	12.8%
Education	0	0	0	0	0	0	0	0	0	0	0	0	0	0.0%	0	0.0%
Engineering	-10	-52	0	0	-5	-16	-34	0	-9	-7	0	-133	634	28.6%	501	22.6%
Forestry	-1	-1	0	5	0	-6	-1	0	-1	5	0	0	42	1.9%	42	1.9%
Public Health & Human Sciences	3	26	0	16	6	0	23	0	71	76	0	221	237	10.7%	458	20.7%
Liberal Arts	4	18	0	34	1	-23	0	0	32	73	0	139	234	10.6%	373	16.8%
Pharmacy	0	0	0	0	0	0	0	0	0	0	0	0	0	0.0%	0	0.0%
Science	-11	-6	0	9	1	-71	-32	0	0	-5	0	-115	462	20.9%	347	15.7%
University Exploratory Studies Program	-10	-17	0	7	-5	-76	-73	0	5	0	0	-169	240	10.8%	71	3.2%
Veterinary Medicine	0	0	0	0	0	0	0	0	0	0	0	0	0	0.0%	0	0.0%
<b>Total</b>												<b>0</b>	<b>2,214</b>	<b>100%</b>	<b>2,214</b>	<b>100%</b>

**Table 6: Fall 2008 First Time, Full Time, Degree Seeking Undergraduate Student Cohort  
Movement Study ( Fall 2008 - Fall 2011 )**

COLLEGE	Cohort 2008	Grad. Total	Same college*	Other college**	Grad. Rate	Attr. Rate	Attr. Rate	College Movement Pattern												Cont. Rate		Retention Rate
								AG	BUS	ED	ENGR	FOR	PHHS	LA	PHAR	SCI	UESP	VM	Subtotal	Trans.	College	
Agricultural Sciences	147	5	5	0	3.4%	42	28.6%	75	3	0	1	0	9	8	0	3	0	1	100	17.0%	51.0%	68.0%
Business	357	5	4	1	1.4%	109	30.5%	6	161	0	4	0	37	29	0	5	1	0	243	23.0%	45.1%	68.1%
Education	0	0	0	0	0.0%	0	0.0%	0	0	0	0	0	0	0	0	0	0	0	0	0.0%	0.0%	0.0%
Engineering	808	10	6	4	1.2%	206	25.5%	12	55	0	424	7	19	42	0	28	5	0	592	20.8%	52.5%	73.3%
Forestry	52	0	0	0	0.0%	9	17.3%	1	1	0	1	31	6	1	0	2	0	0	43	23.1%	59.6%	82.7%
Public Health & Human Sciences	318	9	9	0	2.8%	83	26.1%	2	5	0	0	0	197	13	0	6	3	0	226	9.1%	61.9%	71.1%
Liberal Arts	330	8	7	1	2.4%	100	30.3%	5	5	0	4	1	46	153	0	6	2	0	222	20.9%	46.4%	67.3%
Pharmacy	0	0	0	0	0.0%	0	0.0%	0	0	0	0	0	0	0	0	0	0	0	0	0.0%	0.0%	0.0%
Science	653	10	7	3	1.5%	204	31.2%	25	13	0	11	3	79	49	16	237	6	0	439	30.9%	36.3%	67.2%
University Exploratory Studies Program	338	3	0	3	0.9%	124	36.7%	11	19	0	12	5	83	68	0	10	3	0	211	62.4%	0.0%	62.4%
Veterinary Medicine	0	0	0	0	0.0%	0	0.0%	0	0	0	0	0	0	0	0	0	0	0	0	0.0%	0.0%	0.0%
<b>TOTAL</b>	<b>3,003</b>	<b>50</b>	<b>38</b>	<b>12</b>	<b>1.7%</b>	<b>877</b>	<b>29.2%</b>	<b>137</b>	<b>262</b>	<b>0</b>	<b>457</b>	<b>47</b>	<b>476</b>	<b>363</b>	<b>16</b>	<b>297</b>	<b>20</b>	<b>1</b>	<b>2,076</b>	<b>69.1%</b>		<b>69.1%</b>

\* Number of students graduated from the colleges same as that they enrolled originally in Fall 2008.

\*\* Number of students transferred to other colleges from their originally enrolled cohort college and graduated from the colleges they've transferred to.

**Table 6.1: Fall 2008 First Time, Full Time, Degree Seeking Undergraduate Student Cohort  
Net Gain / Loss by College ( Fall 2008 - Fall 2011 )**

COLLEGE	AG	BUS	ED	ENGR	FOR	PHHS	LA	PHAR	SCI	UESP	VM	Net Gain/Loss	Continued from original cohort	%	Fall 2011 Enrollment #	%
Agricultural Sciences	0	3	0	11	1	-7	-3	0	22	11	-1	37	100	4.8%	137	6.6%
Business	-3	0	0	59	1	-32	-24	0	8	18	0	27	243	11.7%	270	13.0%
Education	0	0	0	0	0	0	0	0	0	0	0	0	0	0.0%	0	0.0%
Engineering	-11	-59	0	0	-6	-19	-38	0	-17	7	0	-143	592	28.5%	449	21.6%
Forestry	-1	-1	0	6	0	-6	0	0	1	5	0	4	43	2.1%	47	2.3%
Public Health & Human Sciences	7	32	0	19	6	0	33	0	73	80	0	250	226	10.9%	476	22.9%
Liberal Arts	3	24	0	38	0	-33	0	0	43	66	0	141	222	10.7%	363	17.5%
Pharmacy	0	0	0	0	0	0	0	0	16	0	0	16	0	0.0%	16	0.8%
Science	-22	-8	0	17	-1	-73	-43	-16	0	-6	0	-152	439	21.1%	287	13.8%
University Exploratory Studies Program	-11	-18	0	-7	-5	-80	-66	0	6	0	0	-181	211	10.2%	30	1.4%
Veterinary Medicine	1	0	0	0	0	0	0	0	0	0	0	1	0	0.0%	1	0.0%
<b>Total</b>												<b>0</b>	<b>2,076</b>	<b>100%</b>	<b>2,076</b>	<b>100%</b>

**Table 7: Fall 2008 First Time, Full Time, Degree Seeking Undergraduate Student Cohort  
Movement Study ( Fall 2008 - Fall 2012 )**

COLLEGE	Cohort 2008	Grad. Total	Same college	Other college	Grad. Rate	Attr.	Attr. Rate	College Movement Pattern												Cont. Rate		Retention Rate
								AG	BUS	ED	ENGR	FOR	PHHS	LA	PHAR	SCI	UESP	VM	Subtotal	Trans.	College	
Agricultural Sciences	147	49	41	8	33.3%	45	30.6%	36	3	0	1	0	4	5	0	2	0	2	53	11.6%	24.5%	36.1%
Business	357	110	82	28	30.8%	119	33.3%	5	74	0	4	0	16	22	0	4	3	0	128	15.1%	20.7%	35.9%
Education	0	0	0	0	0.0%	0	0.0%	0	0	0	0	0	0	0	0	0	0	0	0	0.0%	0.0%	0.0%
Engineering	808	194	138	56	24.0%	257	31.8%	9	41	0	236	6	16	28	0	18	3	0	357	44.2%	0.0%	44.2%
Forestry	52	16	10	6	30.8%	11	21.2%	1	1	0	0	18	3	0	0	2	0	0	25	48.1%	0.0%	48.1%
Public Health & Human Sciences	318	130	108	22	40.9%	88	27.7%	1	5	0	0	0	82	10	0	2	0	0	100	31.4%	0.0%	31.4%
Liberal Arts	330	116	88	28	35.2%	116	35.2%	5	3	0	3	1	18	63	0	5	0	0	98	10.6%	19.1%	29.7%
Pharmacy	0	0	0	0	0.0%	0	0.0%	0	0	0	0	0	0	0	0	0	0	0	0	0.0%	0.0%	0.0%
Science	653	221	145	76	33.8%	230	35.2%	17	11	0	6	2	48	25	3	88	2	0	202	17.5%	13.5%	30.9%
University Exploratory Studies Program	338	86	0	86	25.4%	134	39.6%	10	15	0	8	5	38	34	0	5	3	0	118	34.0%	0.9%	34.9%
Veterinary Medicine	0	0	0	0	0.0%	0	0.0%	0	0	0	0	0	0	0	0	0	0	0	0	0.0%	0.0%	0.0%
<b>TOTAL</b>	<b>3,003</b>	<b>922</b>	<b>612</b>	<b>310</b>	<b>30.7%</b>	<b>1,000</b>	<b>33.3%</b>	<b>84</b>	<b>153</b>	<b>0</b>	<b>258</b>	<b>32</b>	<b>225</b>	<b>187</b>	<b>3</b>	<b>126</b>	<b>11</b>	<b>2</b>	<b>1081</b>	<b>36.0%</b>		<b>36.0%</b>

**Table 7.1: Fall 2008 First Time, Full Time, Degree Seeking Undergraduate Student Cohort  
Net Gain / Loss by College ( Fall 2008 - Fall 2012 )**

COLLEGE	AG	BUS	ED	ENGR	FOR	PHHS	LA	PHAR	SCI	UESP	VM	Net Gain/Loss	Continued from original cohort %	Fall 2012 Enrollment # %
Agricultural Sciences	0	2	0	8	1	-3	0	0	15	10	-2	31	53 4.9%	84 7.8%
Business	-2	0	0	37	1	-11	-19	0	7	12	0	25	128 11.8%	153 14.2%
Education	0	0	0	0	0	0	0	0	0	0	0	0	0 0.0%	0 0.0%
Engineering	-8	-37	0	0	-6	-16	-25	0	-12	5	0	-99	357 33.0%	258 23.9%
Forestry	-1	-1	0	6	0	-3	1	0	0	5	0	7	25 2.3%	32 3.0%
Public Health & Human Sciences	3	11	0	16	3	0	8	0	46	38	0	125	100 9.3%	225 20.8%
Liberal Arts	0	19	0	25	-1	-8	0	0	20	34	0	89	98 9.1%	187 17.3%
Pharmacy	0	0	0	0	0	0	0	0	3	0	0	3	0 0.0%	3 0.3%
Science	-15	-7	0	12	0	-46	-20	-3	0	3	0	-76	202 18.7%	126 11.7%
University Exploratory Studies Program	-10	-12	0	-5	-5	-38	-34	0	-3	0	0	-107	118 10.9%	11 1.0%
Veterinary Medicine	2	0	0	0	0	0	0	0	0	0	0	2	0 0.0%	2 0.2%
<b>Total</b>												<b>0</b>	<b>1081 100%</b>	<b>1081 100%</b>

**Table 8: Fall 2008 First Time, Full Time, Degree Seeking Undergraduate Student Cohort  
Movement Study ( Fall 2008 - Fall 2013 )**

COLLEGE	Cohort 2008	Grad. Total	Same college	Other college	Grad. Rate	Attr.	Attr. Rate	College Movement Pattern												Cont. Rate		Retention Rate
								AG	BUS	ED	ENGR	FOR	PHHS	LA	PHAR	SCI	UESP	VM	Subtotal	Trans.	College	
Agricultural Sciences	147	86	65	21	58.5%	44	29.9%	11	1	0	0	0	3	0	0	0	0	2	17	4.1%	7.5%	11.6%
Business	357	195	141	54	54.6%	121	33.9%	2	20	0	4	0	4	7	0	3	1	0	41	5.9%	5.6%	11.5%
Education	0	0	0	0	0.0%	0	0.0%	0	0	0	0	0	0	0	0	0	0	0	0	0.0%	0.0%	0.0%
Engineering	808	454	334	120	56.2%	233	28.8%	7	16	0	62	2	8	15	0	10	1	0	121	15.0%	0.0%	15.0%
Forestry	52	36	24	12	69.2%	11	21.2%	0	0	0	0	4	1	0	0	0	0	0	5	9.6%	0.0%	9.6%
Public Health & Human Sciences	318	193	155	38	60.7%	92	28.9%	0	1	0	0	1	25	6	0	0	0	0	33	10.1%	0.3%	10.4%
Liberal Arts	330	176	126	50	53.3%	120	36.4%	4	1	0	3	0	5	18	0	2	1	0	34	4.8%	5.5%	10.3%
Pharmacy	0	0	0	0	0.0%	0	0.0%	0	0	0	0	0	0	0	0	0	0	0	0	0.0%	0.0%	0.0%
Science	653	378	219	159	57.9%	232	35.5%	4	6	0	2	0	12	6	0	12	1	0	43	4.7%	1.8%	6.6%
University Exploratory Studies Program	338	167	0	167	49.4%	134	39.6%	2	3	0	3	1	15	9	0	3	1	0	37	10.7%	0.3%	10.9%
Veterinary Medicine	0	0	0	0	0.0%	0	0.0%	0	0	0	0	0	0	0	0	0	0	0	0	0.0%	0.0%	0.0%
<b>TOTAL</b>	<b>3,003</b>	<b>1685</b>	<b>1064</b>	<b>621</b>	<b>56.1%</b>	<b>987</b>	<b>32.9%</b>	<b>30</b>	<b>48</b>	<b>0</b>	<b>74</b>	<b>8</b>	<b>73</b>	<b>61</b>	<b>0</b>	<b>30</b>	<b>5</b>	<b>2</b>	<b>331</b>	<b>11.0%</b>		<b>11.0%</b>

**Table 8.1: Fall 2008 First Time, Full Time, Degree Seeking Undergraduate Student Cohort  
Net Gain / Loss by College ( Fall 2008 - Fall 2013 )**

COLLEGE	AG	BUS	ED	ENGR	FOR	PHHS	LA	PHAR	SCI	UESP	VM	Net Gain/Loss	Continued from original cohort		Fall 2013 Enrollment	
													%	%	#	%
Agricultural Sciences	0	1	0	7	0	-3	4	0	4	2	-2	13	17	5.1%	30	9.1%
Business	-1	0	0	12	0	-3	-6	0	3	2	0	7	41	12.4%	48	14.5%
Education	0	0	0	0	0	0	0	0	0	0	0	0	0	0.0%	0	0.0%
Engineering	-7	-12	0	0	-2	-8	-12	0	-8	2	0	-47	121	36.6%	74	22.4%
Forestry	0	0	0	2	0	0	0	0	0	1	0	3	5	1.5%	8	2.4%
Public Health & Human Sciences	3	3	0	8	0	0	-1	0	12	15	0	40	33	10.0%	73	22.1%
Liberal Arts	-4	6	0	12	0	1	0	0	4	8	0	27	34	10.3%	61	18.4%
Pharmacy	0	0	0	0	0	0	0	0	0	0	0	0	0	0.0%	0	0.0%
Science	-4	-3	0	8	0	-12	-4	0	0	2	0	-13	43	13.0%	30	9.1%
University Exploratory Studies Program	-2	-2	0	-2	-1	-15	-8	0	-2	0	0	-32	37	11.2%	5	1.5%
Veterinary Medicine	2	0	0	0	0	0	0	0	0	0	0	2	0	0.0%	2	0.6%
<b>Total</b>												<b>0</b>	<b>331</b>	<b>100%</b>	<b>331</b>	<b>100%</b>

**Table 9: Fall 2008 First Time, Full Time, Degree Seeking Undergraduate Student Cohort  
Movement Study ( Fall 2008 - Fall 2014 )**

COLLEGE	Cohort 2008	Grad. Total	Same college	Other college	Grad. Rate	Attr.	Attr. Rate	College Movement Pattern												Cont. Rate		Retention Rate
								AG	BUS	ED	ENGR	FOR	PHHS	LA	PHARM	SCI	UESP	VM	Subtotal	Trans.	College	
Agricultural Sciences	147	96	72	24	65.3%	47	32.0%	1	0	0	0	0	1	0	0	0	0	2	4	2.0%	0.7%	2.7%
Business	357	221	157	64	61.9%	127	35.6%	1	3	0	1	0	1	3	0	0	0	0	9	1.7%	0.8%	2.5%
Education	0	0	0	0	0.0%	0	0.0%	0	0	0	0	0	0	0	0	0	0	0	0	0.0%	0.0%	0.0%
Engineering	808	530	370	160	65.6%	238	29.5%	2	3	0	23	0	1	6	0	5	0	0	40	2.1%	2.8%	5.0%
Forestry	52	40	26	14	76.9%	11	21.2%	0	0	0	0	1	0	0	0	0	0	0	1	0.0%	1.9%	1.9%
Public Health & Human Sciences	318	212	168	44	66.7%	94	29.6%	0	1	0	0	0	5	4	0	1	1	0	12	2.2%	1.6%	3.8%
Liberal Arts	330	196	137	59	59.4%	122	37.0%	1	1	0	2	0	2	6	0	0	0	0	12	1.8%	1.8%	3.6%
Pharmacy	0	0	0	0	0.0%	0	0.0%	0	0	0	0	0	0	0	0	0	0	0	0	0.0%	0.0%	0.0%
Science	653	409	225	184	62.6%	228	34.9%	2	1	0	2	0	3	3	0	5	0	0	16	1.7%	0.8%	2.5%
University Exploratory Studies Program	338	192	0	192	56.8%	138	40.8%	2	1	0	1	0	2	2	0	0	0	0	8	2.4%	0.0%	2.4%
Veterinary Medicine	0	0	0	0	0.0%	0	0.0%	0	0	0	0	0	0	0	0	0	0	0	0	0.0%	0.0%	0.0%
<b>TOTAL</b>	<b>3,003</b>	<b>1896</b>	<b>1155</b>	<b>741</b>	<b>63.1%</b>	<b>1005</b>	<b>33.5%</b>	<b>9</b>	<b>10</b>	<b>0</b>	<b>29</b>	<b>1</b>	<b>15</b>	<b>24</b>	<b>0</b>	<b>11</b>	<b>1</b>	<b>2</b>	<b>102</b>	<b>3.4%</b>	<b>3.4%</b>	

\* Students moving to College of Earth Ocean & Atmospheric Sciences included in Science totals.

**Table 9.1: Fall 2008 First Time, Full Time, Degree Seeking Undergraduate Student Cohort  
Net Gain / Loss by College ( Fall 2008 - Fall 2014 )**

COLLEGE	AG	BUS	ED	ENGR	FOR	PHHS	LA	PHARM	SCI	UESP	VM	Net Gain/Loss	Continued from original cohort		Fall 2014 Enrollment	
													%	%	#	%
Agricultural Sciences	0	1	0	2	0	-1	1	0	2	2	-2	5	4	3.9%	9	8.8%
Business	-1	0	0	2	0	0	-2	0	1	1	0	1	9	8.8%	10	9.8%
Education	0	0	0	0	0	0	0	0	0	0	0	0	0	0.0%	0	0.0%
Engineering	-2	-2	0	0	0	-1	-4	0	-3	1	0	-11	40	39.2%	29	28.4%
Forestry	0	0	0	0	0	0	0	0	0	0	0	0	1	1.0%	1	1.0%
Public Health & Human Sciences	1	0	0	1	0	0	-2	0	2	1	0	3	12	11.8%	15	14.7%
Liberal Arts	-1	2	0	4	0	2	0	0	3	2	0	12	12	11.8%	24	23.5%
Pharmacy	0	0	0	0	0	0	0	0	0	0	0	0	0	0.0%	0	0.0%
Science	-2	-1	0	3	0	-2	-3	0	0	0	0	-5	16	15.7%	11	10.8%
University Exploratory Studies Program	-2	-1	0	-1	0	-1	-2	0	0	0	0	-7	8	7.8%	1	1.0%
Veterinary Medicine	2	0	0	0	0	0	0	0	0	0	0	2	0	0.0%	2	2.0%
<b>Total</b>												<b>0</b>	<b>102</b>	<b>100%</b>	<b>102</b>	<b>100%</b>

Source: Office of Institutional Research (6/1/2015)