

Oregon State University
Movement in Primary College
Fall Term 2006 Cohort Class

This is a study of the cohort of first time, full time (credit hours greater than or equal to 12) degree seeking undergraduate students enrolled in the Fall Term of 2006. The study provides detailed information on enrollment, graduation, retention, attrition, and change in college (based on primary major) of the cohort class over a 1-year to 6-year time span. With this study, each college can track the migration patterns of their students and determine the graduation, retention, and attrition rates of students in their college cohort from 2006-2012.

There were 2,782 students in the Fall Term 2006 cohort class enrolled in colleges/programs at the university. Table 1 contains the student graduation, retention, and attrition numbers and percentages for 2010 (4-year), 2011 (5-year) and 2012 (6-year). The data show that in Fall Term 2012, there were 117 students from the cohort continuing their study at the university. Figures 1, 2, and 3 depict the graduation, retention, and attrition rates by year for the Fall Term 2006 cohort class. The six-year graduation rate for Fall Term 2006 cohort was 60.4%. The first year retention rate for the Fall Term 2006 cohort was 81.3%. One year later, 18.7% of the students in the cohort had left OSU.

Table 1: Fall Term 2006 Cohort Graduation, Retention, and Attrition Rates						
Fall 2006 Cohort	2010		2011		2012	
	Number	Percentage	Number	Percentage	Number	Percentage
Graduation	815	29.3%	1,501	54.0%	1,680	60.4%
Continuation	984	35.4%	294	10.6%	117	4.2%
Attrition	983	35.3%	987	35.5%	985	35.4%
Total	2,782	100.0%	2,782	100.0%	2,782	100.0%

Figure 1: Graduation Rate by Year

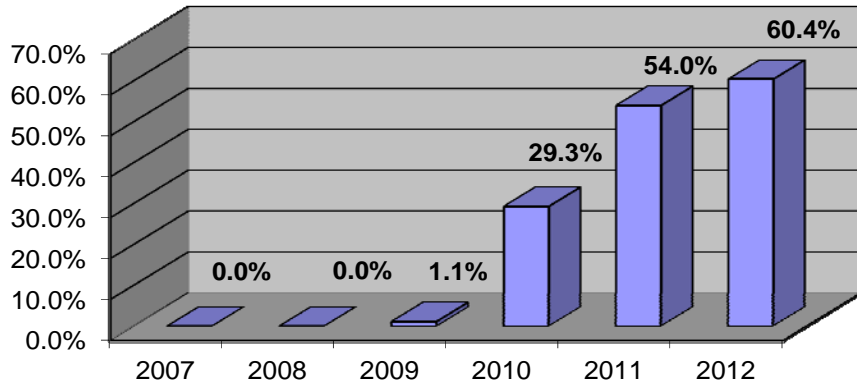


Figure 2: Retention Rate by Year

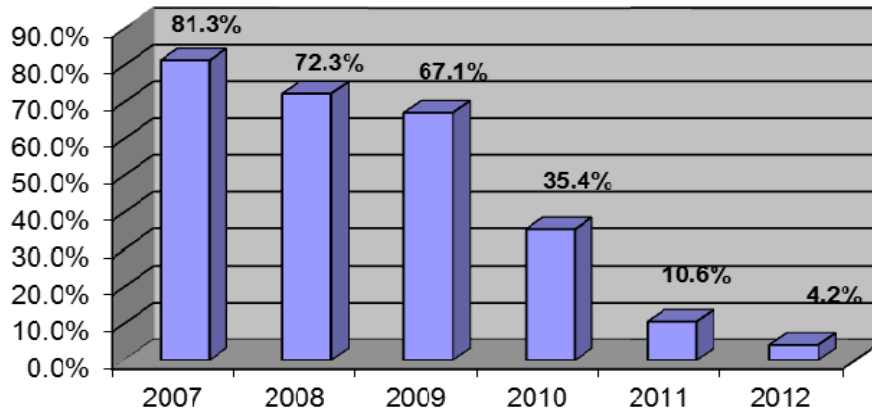
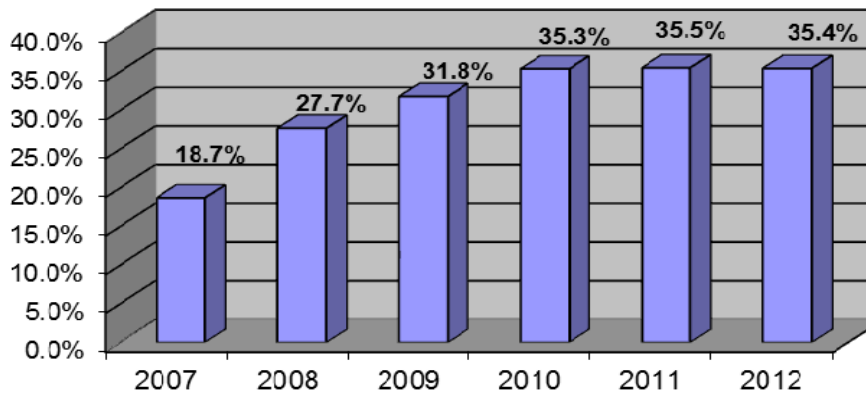


Figure 3: Attrition Rate by Year



For students who graduated from OSU, a large proportion graduated from colleges other than the one in which they had initially enrolled in Fall Term 2006. Table 2 lists the numbers of students who graduated from their original colleges and from other colleges they transferred to by year. By the end of Summer Term 2012, 60.4% of students (1,680) in the cohort class had graduated; 62.4% of the graduates (1,049) graduated from the same college in which they originally enrolled in Fall 2006 and 37.6% (631) graduated from other colleges. Students who stayed in the same college in which they originally enrolled graduated sooner than those in the cohort who changed colleges.

Fall 2006 Cohort	2010		2011		2012	
	Number	Percentage	Number	Percentage	Number	Percentage
From the same college	553	67.9%	957	63.8%	1,049	62.4%
From other colleges	262	32.1%	544	36.2%	631	37.6%
Total graduation	815	100.0%	1,501	100.0%	1,680	100.0%

In the group of continuing students, some continued in the same college and some transferred to other colleges. Table 3 contains the net gains and losses of students by college for each year. The Colleges of Engineering, Science and the University Exploratory Studies Program consistently lost students to other colleges. The Colleges of Agricultural Sciences, Forestry, Public Health and Human Sciences, and Liberal Arts gained students from other colleges each year.

	2007	2008	2009	2010	2011	2012
Agricultural Sciences	6	11	11	16	7	8
Business	26	30	19	27	5	5
Education	1	0	0	0	0	0
Engineering	-61	-98	-106	-69	-29	-18
Forestry	1	9	14	11	2	2
Public Health and Human Sciences	78	157	172	100	24	5
Liberal Arts	47	117	153	92	34	21
Pharmacy	0	2	21	6	3	2
Science	-58	-95	-125	-70	-16	-10
University Exploratory Studies Program	-40	-133	-162	-113	-30	-15
Veterinary Medicine	0	0	3	0	0	0

Details on the redistribution of continuing students are provided in Figures 4-9.

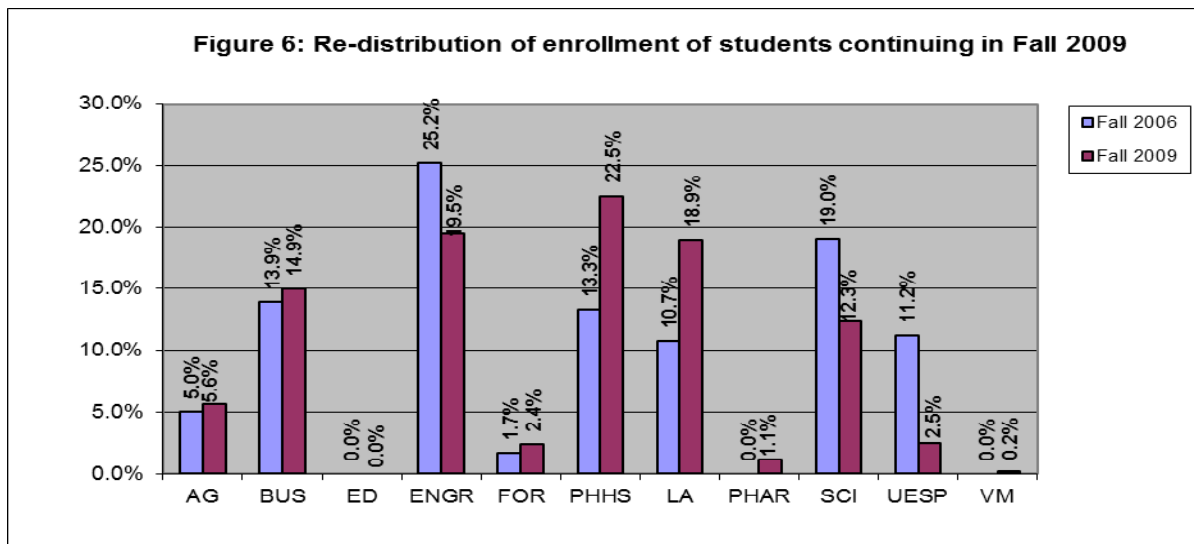
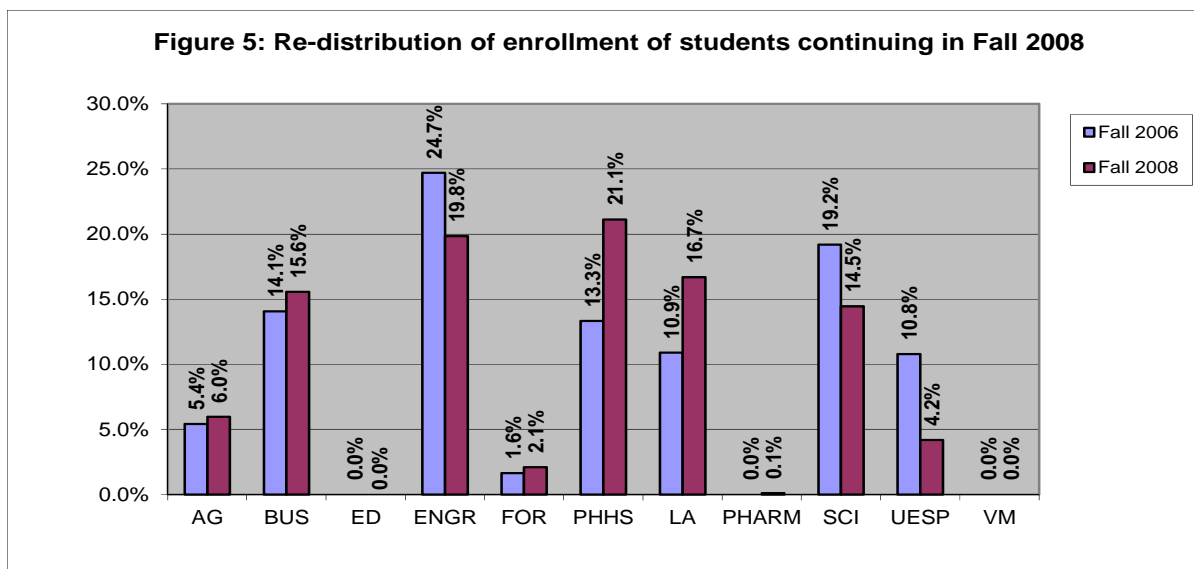
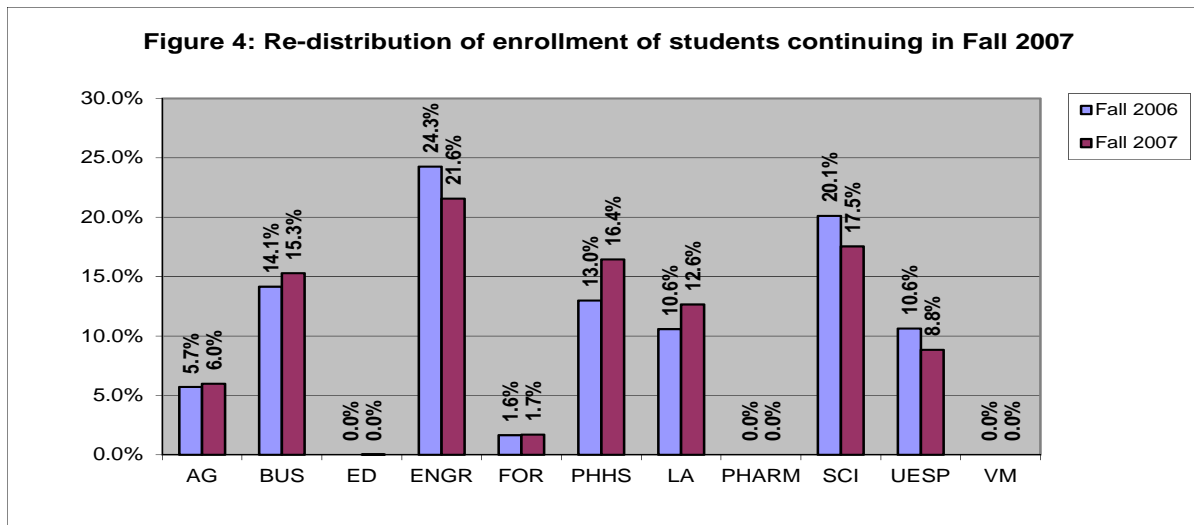


Figure 7: Re-distribution of enrollment of students continuing in Fall 2010

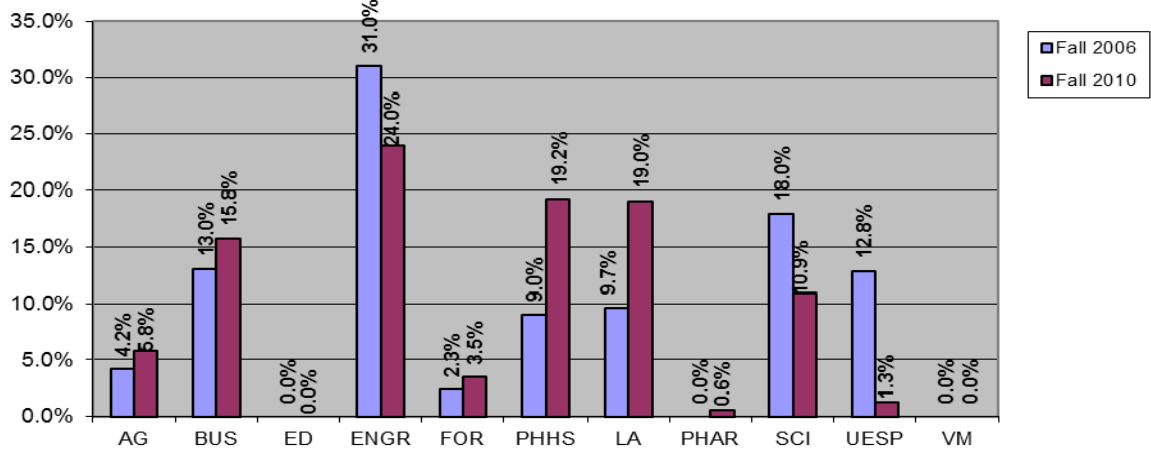


Figure 8: Re-distribution of enrollment of students continuing in Fall 2011

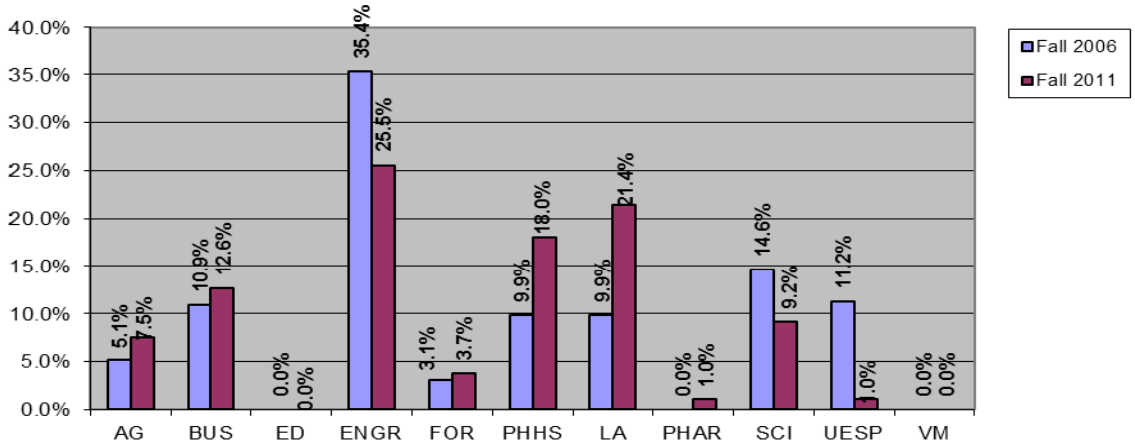
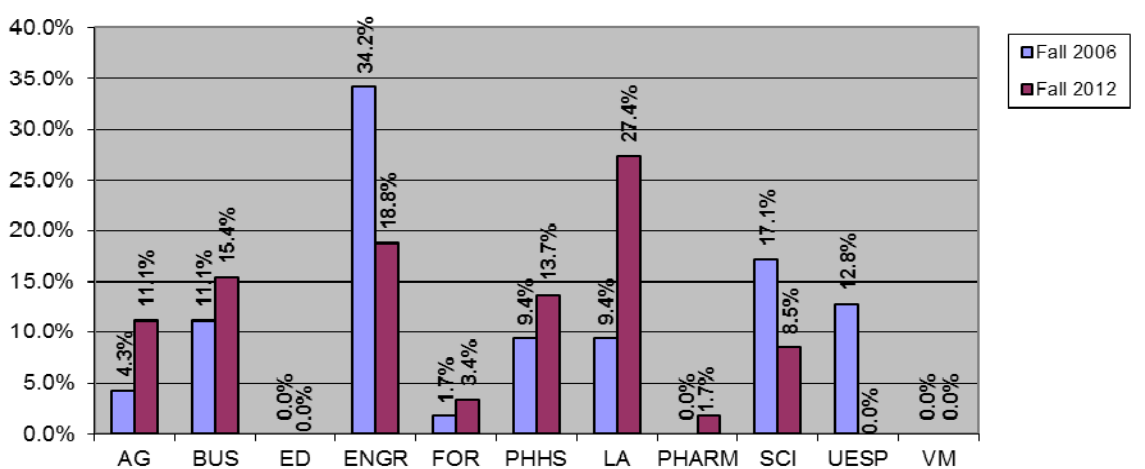


Figure 9: Re-distribution of enrollment of students continuing in Fall 2012



Tables 4-9 contain retention and graduation data for each college from Fall 2006 to Fall 2012 for the Fall 2006 cohort. The shaded columns in the top table on each page denote the college that students moved to, listed by college. For example, in Table 4, the College of Agricultural Sciences has 156 students in Fall Term 2006 cohort class. 27 Agricultural Sciences students left OSU after their first year. Of those who stayed, 113 continued in Agricultural Sciences, 3 transferred to Business, 3 to Engineering, 5 to Public Health and Human Sciences, 4 to Liberal Arts, and 1 transferred to Science. Thus, Agricultural Sciences had 10.3% of their cohort moved to other OSU colleges; 72.4% of the original cohort remained in Agricultural Sciences. The overall retention rate at OSU for this cohort of Agricultural Sciences students was 82.7%.

The second table on each page contains the net gain or loss by college for the freshman cohort. Again, for Agricultural Sciences, 1 student was gained from Forestry, 11 from Science, and 5 from University Exploratory Studies Program. At the same time, Agricultural Sciences lost 2 students to Business, 5 to Public Health and Human Sciences, and 4 were lost to Liberal Arts. These changes resulted in a net gain of 6 students.

Over the course of this study, Public Health and Human Sciences and Liberal Arts consistently gained the most students from other colleges. Forestry, Business, and Agricultural Sciences also consistently received students from other colleges. University Exploratory Studies Program consistently transferred more students to other colleges; this is expected given the purpose of University Exploratory Studies Program. With University Exploratory Studies Program omitted, the College of Engineering and the College of Sciences had the most students transferring to other OSU colleges over the course of the study.

The graduation results begin in Table 6, Fall 2006 -Fall 2009. For example, after three years (Table 6), 3 students from the Agricultural Sciences cohort graduated, producing a three-year graduation rate of 1.9%. After four years (Table 7) the number increased to 50 students graduated for a 32.1.0% graduation rate; 11 of those students graduated from another OSU college and 39 graduated from Agricultural Sciences. For the fifth

year (Table 8), 78 students in the Agricultural Sciences cohort had graduated; however, only 60 students graduated from Agricultural Sciences. The other 18 students graduated from other OSU colleges.

The sixth year (Table 9) graduation rate for Agricultural Sciences was 57.7% with a total of 69 students from the Agricultural Sciences cohort graduating in Agricultural Sciences and 21 graduating from other OSU colleges.

Overall, the fourth year graduation data (Table 7) suggests that of those students in the cohort who graduated in four years, about 32.1% (262 out of 815 graduated) were graduating from colleges other than the one in which they had originally enrolled. This number jumps to 36.2% (544 out of 1,501) after five years (Table 8) and increases again to 37.6% (631 out of 1,680) after six years (Table 9).

About 40% of the students who graduated from OSU after six years had transferred to an OSU college that was different from the college in which they had initially enrolled. The implications of this information in terms of advising and helping students to transition from college to college seem particularly appropriate.

**Table 4: Fall 2006 First Time, Full Time, Degree Seeking Undergraduate Student Cohort
Movement Study (Fall 2006 - Fall 2007)**

COLLEGE	Cohort 2006	Grad. Rate	Grad. Rate	Attr. Rate	Attr. Rate	College Movement Pattern												Cont. Rate		Rate
						AG	BUS	ED	ENGR	FOR	PHHS	LA	PHAR	SCI	UESP	VM	Subtotal	Trans.*	College**	
Agricultural Sciences	156	0	0%	27	17.3%	113	3	0	3	0	5	4	0	1	0	0	129	10.3%	72.4%	82.7%
Business	402	0	0%	82	20.4%	1	270	0	4	0	19	13	0	5	8	0	320	12.4%	67.2%	79.6%
Education	0	0	0%	0	0.0%	0	0	0	0	0	0	0	0	0	0	0	0	0.0%	0.0%	0.0%
Engineering	650	0	0%	101	15.5%	3	25	0	455	1	8	17	0	14	26	0	549	14.5%	70.0%	84.5%
Forestry	45	0	0%	8	17.8%	1	1	0	0	30	1	1	0	3	0	0	37	15.6%	66.7%	82.2%
Public Health & Human Sciences	364	0	0%	70	19.2%	0	9	0	0	3	257	5	0	14	6	0	294	10.2%	70.6%	80.8%
Liberal Arts	305	0	0%	66	21.6%	0	5	1	5	1	27	194	0	3	3	0	239	14.8%	63.6%	78.4%
Pharmacy	0	0	0%	0	0.0%	0	0	0	0	0	0	0	0	0	0	0	0	0.0%	0.0%	0.0%
Science	545	0	0%	90	16.5%	12	20	0	10	1	26	24	0	342	20	0	455	20.7%	62.8%	83.5%
University Exploratory Studies Program	315	0	0%	75	23.8%	5	13	0	11	2	29	28	0	15	137	0	240	32.7%	43.5%	76.2%
Veterinary Medicine	0	0	0%	0	0%	0	0	0	0	0	0	0	0	0	0	0	0	0.0%	0.0%	0.0%
TOTAL	2,782	0	0%	519	18.7%	135	346	1	488	38	372	286	0	397	200	0	2,263	81.3%		81.3%

* Percentage of students transferred to other colleges from the college they originally enrolled in Fall 2006.

** Percentage of students continued in the same college as they originally enrolled in.

**Table 4.1 Fall 2006 First Time, Full Time, Degree Seeking Undergraduate Student Cohort
Net Gain / Loss by College (Fall 2006 - Fall 2007)**

COLLEGE	AG	BUS	ED	ENGR	FOR	PHHS	LA	PHARM	SCI	UESP	VM	Net Gain / Loss	Continued from original cohort		Fall 2007 Enrollment each college	
													%	%	%	%
Agricultural Sciences	0	-2	0	0	1	-5	-4	0	11	5	0	6	129	5.7%	135	6.0%
Business	2	0	0	21	1	-10	-8	0	15	5	0	26	320	14.1%	346	15.3%
Education	0	0	0	0	0	0	1	0	0	0	0	1	0	0.0%	1	0.0%
Engineering	0	-21	0	0	-1	-8	-12	0	-4	-15	0	-61	549	24.3%	488	21.6%
Forestry	-1	-1	0	1	0	2	0	0	-2	2	0	1	37	1.6%	38	1.7%
Public Health & Human Sciences	5	10	0	8	-2	0	22	0	12	23	0	78	294	13.0%	372	16.4%
Liberal Arts	4	8	-1	12	0	-22	0	0	21	25	0	47	239	10.6%	286	12.6%
Pharmacy	0	0	0	0	0	0	0	0	0	0	0	0	0	0.0%	0	0.0%
Science	-11	-15	0	4	2	-12	-21	0	0	-5	0	-58	455	20.1%	397	17.5%
University Exploratory Studies Program	-5	-5	0	15	-2	-23	-25	0	5	0	0	-40	240	10.6%	200	8.8%
Veterinary Medicine	0	0	0	0	0	0	0	0	0	0	0	0	0	0.0%	0	0.0%
Total												0	2,263	100%	2,263	100%

+9

**Table 5: Fall 2006 First Time, Full Time, Degree Seeking Undergraduate Student Cohort
Movement Study (Fall 2006 - Fall 2008)**

COLLEGE	Cohort 2006	Grad. Total	Same college*	Other college**	Grad. Rate	Attr. Rate	Attr. Rate	College Movement Pattern											Cont. Rate		Retention Rate	
								AG	BUS	ED	ENGR	FOR	PHHS	LA	PHAR	SCI	UESP	VM	Subtotal	Trans.		College
Agricultural Sciences	156	0	0	0	0.0%	47	30.1%	86	2	0	2	0	4	9	0	6	0	0	109	14.7%	55.1%	69.9%
Business	402	0	0	0	0.0%	119	29.6%	3	201	0	2	1	34	31	0	8	3	0	283	20.4%	50.0%	70.4%
Education	0	0	0	0	0.0%	0	0.0%	0	0	0	0	0	0	0	0	0	0	0	0	0.0%	0.0%	0.0%
Engineering	650	0	0	0	0.0%	153	23.5%	2	38	0	370	7	13	31	0	22	14	0	497	19.5%	56.9%	76.5%
Forestry	45	0	0	0	0.0%	12	26.7%	2	2	0	0	24	1	1	0	3	0	0	33	20.0%	53.3%	73.3%
Public Health & Human Sciences	364	0	0	0	0.0%	96	26.4%	1	10	0	1	3	226	16	0	9	2	0	268	11.5%	62.1%	73.6%
Liberal Arts	305	0	0	0	0.0%	86	28.2%	2	8	0	2	2	34	164	0	6	1	0	219	18.0%	53.8%	71.8%
Pharmacy	0	0	0	0	0.0%	0	0.0%	0	0	0	0	0	0	0	0	0	0	0	0	0.0%	0.0%	0.0%
Science	545	0	0	0	0.0%	159	29.2%	14	21	0	15	2	57	31	2	237	7	0	386	27.3%	43.5%	70.8%
University Exploratory Studies Program	315	0	0	0	0.0%	98	31.1%	10	27	0	11	3	56	53	0	24	33	0	217	58.4%	10.5%	68.9%
Veterinary Medicine	0	0	0	0	0.0%	0	0.0%	0	0	0	0	0	0	0	0	0	0	0	0	0.0%	0.0%	0.0%
TOTAL	2,782	0	0	0	0.0%	770	27.7%	120	309	0	403	42	425	336	2	315	60	0	2,012	72.3%		72.3%

* Number of students graduated from the colleges same as that they enrolled originally in Fall 2006.

** Number of students transferred to other colleges from their originally enrolled cohort college and graduated from the colleges they've transferred to.

**Table 5.1: Fall 2006 First Time, Full Time, Degree Seeking Undergraduate Student Cohort
Net Gain / Loss by College (Fall 2006- Fall 2008)**

COLLEGE	AG	BUS	ED	ENGR	FOR	PHHS	LA	PHARM	SCI	UESP	VM	Net Gain/Loss	Continued from orig cohort	%	Fall 2008 Enrollment each college	%
Agricultural Sciences	0	1	0	0	2	-3	-7	0	8	10	0	11	109	5.4%	120	6.0%
Business	-1	0	0	40	1	-24	-23	0	13	24	0	30	283	14.1%	313	15.6%
Education	0	0	0	0	0	0	0	0	0	0	0	0	0	0.0%	0	0.0%
Engineering	0	-40	0	0	-7	-12	-29	0	-7	-3	0	-98	497	24.7%	399	19.8%
Forestry	-2	-1	0	7	0	2	1	0	-1	3	0	9	33	1.6%	42	2.1%
Public Health & Human Sciences	3	24	0	12	-2	0	18	0	48	54	0	157	268	13.3%	425	21.1%
Liberal Arts	7	23	0	29	-1	-18	0	0	25	52	0	117	219	10.9%	336	16.7%
Pharmacy	0	0	0	0	0	0	0	0	2	0	0	2	0	0.0%	2	0.1%
Science	-8	-13	0	7	1	-48	-25	-2	0	-7	0	-95	386	19.2%	291	14.5%
University Exploratory Studies Program	-10	-24	0	3	-3	-54	-52	0	7	0	0	-133	217	10.8%	84	4.2%
Veterinary Medicine	0	0	0	0	0	0	0	0	0	0	0	0	0	0.0%	0	0.0%
Total												0	2,012	100%	2,012	100%

**Table 6: Fall 2006 First Time, Full Time, Degree Seeking Undergraduate Student Cohort
Movement Study (Fall 2006 - Fall 2009)**

COLLEGE	Cohort 2006	Grad. Total college*	Same college**	Other college**	Grad. Rate	Attr. Rate	Attr. Rate	College Movement Pattern												Cont. Rate		Retention Rate
								AG	BUS	ED	ENGR	FOR	PHHS	LA	PHAR	SCI	UESP	VM	Subtotal	Trans.	College	
Agricultural Sciences	156	3	3	0	1.9%	59	37.8%	67	1	0	2	0	5	9	0	6	1	3	94	17.3%	42.9%	60.3%
Business	402	3	3	0	0.7%	139	34.6%	4	168	0	2	1	34	38	0	8	5	0	260	22.9%	41.8%	64.7%
Education	0	0	0	0	0.0%	0	0.0%	0	0	0	0	0	0	0	0	0	0	0	0	0.0%	0.0%	0.0%
Engineering	650	3	1	2	0.5%	177	27.2%	6	39	0	336	7	19	31	0	25	7	0	470	20.6%	51.7%	72.3%
Forestry	45	0	0	0	0.0%	14	31.1%	1	3	0	0	24	0	2	0	1	0	0	31	15.6%	53.3%	68.9%
Public Health & Human Sciences	364	6	6	0	1.6%	110	30.2%	0	8	0	2	4	206	21	0	7	0	0	248	11.5%	56.6%	68.1%
Liberal Arts	305	7	7	0	2.3%	98	32.1%	2	8	0	2	2	27	153	0	6	0	0	200	15.4%	50.2%	65.6%
Pharmacy	0	0	0	0	0.0%	0	0.0%	0	0	0	0	0	0	0	0	0	0	0	0	0.0%	0.0%	0.0%
Science	545	8	6	2	1.5%	182	33.4%	15	22	0	13	3	68	32	21	177	4	0	355	32.7%	32.5%	65.1%
University Exploratory Studies Program	315	1	0	1	0.3%	105	33.3%	10	26	0	11	4	61	67	0	25	5	0	209	66.3%	0.0%	66.3%
Veterinary Medicine	0	0	0	0	0.0%	0	0.0%	0	0	0	0	0	0	0	0	0	0	0	0	0.0%	0.0%	0.0%
TOTAL	2,782	31	26	5	1.1%	884	31.8%	105	275	0	368	45	420	353	21	255	22	3	1,867	67.1%		67.1%

* Number of students graduated from the colleges same as that they enrolled originally in Fall 2006.

** Number of students transferred to other colleges from their originally enrolled cohort college and graduated from the colleges they've transferred to.

**Table 6.1: Fall 2006 First Time, Full Time, Degree Seeking Undergraduate Student Cohort
Net Gain / Loss by College (Fall 2006 - Fall 2009)**

COLLEGE	AG	BUS	ED	ENGR	FOR	PHHS	LA	PHAR	SCI	UESP	VM	Net Gain/Loss	Cont. from orig. cohort	%	Fall 2009 Enrollment college	%
Agricultural Sciences	0	3	0	4	1	-5	-7	0	9	9	-3	11	94	5.0%	105	5.6%
Business	-3	0	0	41	2	-26	-30	0	14	21	0	19	260	13.9%	279	14.9%
Education	0	0	0	0	0	0	0	0	0	0	0	0	0	0.0%	0	0.0%
Engineering	-4	-41	0	0	-7	-17	-29	0	-12	4	0	-106	470	25.2%	364	19.5%
Forestry	-1	-2	0	7	0	4	0	0	2	4	0	14	31	1.7%	45	2.4%
Public Health & Human Sciences	5	26	0	17	-4	0	6	0	61	61	0	172	248	13.3%	420	22.5%
Liberal Arts	7	30	0	29	0	-6	0	0	26	67	0	153	200	10.7%	353	18.9%
Pharmacy	0	0	0	0	0	0	0	0	21	0	0	21	0	0.0%	21	1.1%
Science	-9	-14	0	12	-2	-61	-26	-21	0	-4	0	-125	355	19.0%	230	12.3%
University Exploratory Studies Program	-9	-21	0	-4	-4	-61	-67	0	4	0	0	-162	209	11.2%	47	2.5%
Veterinary Medicine	3	0	0	0	0	0	0	0	0	0	0	3	0	0.0%	3	0.2%
Total												0	1,867	100%	1,867	100%

Table 7: Fall 2006 First Time, Full Time, Degree Seeking Undergraduate Student Cohort Movement Study (Fall 2006 - Fall 2010)																						
COLLEGE	Cohort 2006	Grad. Total	Same college	Other college	Grad. Rate	Attr. Rate	Attr. Rate	College Movement Pattern												Cont. Rate		Retention Rate
								AG	BUS	ED	ENGR	FOR	PHHS	LA	PHAR	SCI	UESP	VM	Subtotal	Trans.	College	
Agricultural Sciences	156	50	39	11	32.1%	65	41.7%	29	0	0	2	0	3	6	0	1	0	0	41	7.7%	18.6%	26.3%
Business	402	114	78	36	28.4%	160	39.8%	4	78	0	1	2	16	25	0	2	0	0	128	12.4%	19.4%	31.8%
Education	0	0	0	0	0.0%	0	0.0%	0	0	0	0	0	0	0	0	0	0	0	0	0.0%	0.0%	0.0%
Engineering	650	129	94	35	19.8%	216	33.2%	4	33	0	206	7	14	21	0	14	6	0	305	46.9%	0.0%	46.9%
Forestry	45	8	6	2	17.8%	14	31.1%	1	3	0	0	17	0	2	0	0	0	0	23	51.1%	0.0%	51.1%
Public Health & Human Sciences	364	154	133	21	42.3%	121	33.2%	0	3	0	3	3	65	12	0	2	1	0	89	23.6%	0.8%	24.5%
Liberal Arts	305	102	80	22	33.4%	108	35.4%	1	6	0	1	1	10	72	0	4	0	0	95	7.5%	23.6%	31.1%
Pharmacy	0	0	0	0	0.0%	0	0.0%	0	0	0	0	0	0	0	0	0	0	0	0	0.0%	0.0%	0.0%
Science	545	182	123	59	33.4%	186	34.1%	10	16	0	12	2	44	13	5	72	3	0	177	19.3%	13.2%	32.5%
University Exploratory Studies Program	315	76	0	76	24.1%	113	35.9%	8	16	0	11	2	37	36	1	12	3	0	126	39.0%	1.0%	40.0%
Veterinary Medicine	0	0	0	0	0.0%	0	0.0%	0	0	0	0	0	0	0	0	0	0	0	0	0.0%	0.0%	0.0%
TOTAL	2,782	815	553	262	29.3%	983	35.3%	57	155	0	236	34	189	187	6	107	13	0	984	35.4%	35.4%	

Table 7.1: Fall 2006 First Time, Full Time, Degree Seeking Undergraduate Student Cohort Net Gain / Loss by College (Fall 2006 - Fall 2010)																
COLLEGE	AG	BUS	ED	ENGR	FOR	PHHS	LA	PHAR	SCI	UESP	VM	Net Gain/Loss	Cont. from orig. cohort		Fall 2010 Enrollment each college	
													%	%	%	%
Agricultural Sciences	0	4	0	2	1	-3	-5	0	9	8	0	16	41	4.2%	57	5.8%
Business	-4	0	0	32	1	-13	-19	0	14	16	0	27	128	13.0%	155	15.8%
Education	0	0	0	0	0	0	0	0	0	0	0	0	0	0.0%	0	0.0%
Engineering	-2	-32	0	0	-7	-11	-20	0	-2	5	0	-69	305	31.0%	236	24.0%
Forestry	-1	-1	0	7	0	3	-1	0	2	2	0	11	23	2.3%	34	3.5%
Public Health & Human Sciences	3	13	0	11	-3	0	-2	0	42	36	0	100	89	9.0%	189	19.2%
Liberal Arts	5	19	0	20	1	2	0	0	9	36	0	92	95	9.7%	187	19.0%
Pharmacy	0	0	0	0	0	0	0	0	5	1	0	6	0	0.0%	6	0.6%
Science	-9	-14	0	2	-2	-42	-9	-5	0	9	0	-70	177	18.0%	107	10.9%
University Exploratory Studies Program	-8	-16	0	-5	-2	-36	-36	-1	-9	0	0	-113	126	12.8%	13	1.3%
Veterinary Medicine	0	0	0	0	0	0	0	0	0	0	0	0	0	0.0%	0	0.0%
Total												0	984	100%	984	100%

**Table 8: Fall 2006 First Time, Full Time, Degree Seeking Undergraduate Student Cohort
Movement Study (Fall 2006 - Fall 2011)**

COLLEGE	Cohort 2006	Grad. Total	Same college	Other college	Grad. Rate	Attr.	Attr. Rate	College Movement Pattern											Cont. Rate		Retention Rate	
								AG	BUS	ED	ENGR	FOR	PHHS	LA	PHAR	SCI	UESP	VM	Subtotal	Trans.		College
Agricultural Sciences	156	78	60	18	50.0%	63	40.4%	10	0	0	1	0	1	2	0	1	0	0	15	3.2%	6.4%	9.6%
Business	402	214	143	71	53.2%	156	38.8%	1	13	0	1	1	5	11	0	0	0	0	32	4.7%	3.2%	8.0%
Education	0	0	0	0	0.0%	0	0.0%	0	0	0	0	0	0	0	0	0	0	0	0	0.0%	0.0%	0.0%
Engineering	650	340	252	88	52.3%	206	31.7%	2	13	0	60	1	7	12	0	6	3	0	104	16.0%	0.0%	16.0%
Forestry	45	22	18	4	48.9%	14	31.1%	0	2	0	0	5	0	2	0	0	0	0	9	20.0%	0.0%	20.0%
Public Health & Human Sciences	364	218	185	33	59.9%	117	32.1%	1	0	0	3	2	19	4	0	0	0	0	29	7.4%	0.5%	8.0%
Liberal Arts	305	157	122	35	51.5%	119	39.0%	1	1	0	1	0	4	21	0	1	0	0	29	2.6%	6.9%	9.5%
Pharmacy	0	0	0	0	0.0%	0	0.0%	0	0	0	0	0	0	0	0	0	0	0	0	0.0%	0.0%	0.0%
Science	545	307	177	130	56.3%	195	35.8%	5	4	0	4	1	6	4	3	16	0	0	43	5.0%	2.9%	7.9%
University Exploratory Studies Program	315	165	0	165	52.4%	117	37.1%	2	4	0	5	1	11	7	0	3	0	0	33	10.5%	0.0%	10.5%
Veterinary Medicine	0	0	0	0	0.0%	0	0.0%	0	0	0	0	0	0	0	0	0	0	0	0	0.0%	0.0%	0.0%
TOTAL	2,782	1501	957	544	54.0%	987	35.5%	22	37	0	75	11	53	63	3	27	3	0	294	10.6%		10.6%

**Table 8.1: Fall 2006 First Time, Full Time, Degree Seeking Undergraduate Student Cohort
Net Gain / Loss by College (Fall 2006 - Fall 2011)**

COLLEGE	AG	BUS	ED	ENGR	FOR	PHHS	LA	PHAR	SCI	UESP	VM	Net Gain/Loss	Continued from original cohort	%	Fall 2011 Enrollment Number	%
Agricultural Sciences	0	1	0	1	0	0	-1	0	4	2	0	7	15	5.1%	22	7.5%
Business	-1	0	0	12	1	-5	-10	0	4	4	0	5	32	10.9%	37	12.6%
Education	0	0	0	0	0	0	0	0	0	0	0	0	0	0.0%	0	0.0%
Engineering	-1	-12	0	0	-1	-4	-11	0	-2	2	0	-29	104	35.4%	75	25.5%
Forestry	0	-1	0	1	0	2	-2	0	1	1	0	2	9	3.1%	11	3.7%
Public Health & Human Sciences	0	5	0	4	-2	0	0	0	6	11	0	24	29	9.9%	53	18.0%
Liberal Arts	1	10	0	11	2	0	0	0	3	7	0	34	29	9.9%	63	21.4%
Pharmacy	0	0	0	0	0	0	0	0	3	0	0	3	0	0.0%	3	1.0%
Science	-4	-4	0	2	-1	-6	-3	-3	0	3	0	-16	43	14.6%	27	9.2%
University Exploratory Studies Program	-2	-4	0	-2	-1	-11	-7	0	-3	0	0	-30	33	11.2%	3	1.0%
Veterinary Medicine	0	0	0	0	0	0	0	0	0	0	0	0	0	0.0%	0	0.0%
Total												0	294	100%	294	100%

**Table 9: Fall 2006 First Time, Full Time, Degree Seeking Undergraduate Student Cohort
Movement Study (Fall 2006 - Fall 2012)**

COLLEGE	Cohort 2006	Grad. Total	Same college	Other college	Grad. Rate	Attr.	Attr. Rate	College Movement Pattern												Cont. Rate		Retention Rate
								AG	BUS	ED	ENGR	FOR	PHHS	LA	PHARM	SCI	UESP	VM	Subtotal	Trans.	College	
Agricultural Sciences	156	90	69	21	57.7%	61	39.1%	4	0	0	0	0	0	1	0	0	0	0	5	0.6%	2.6%	3.2%
Business	402	229	149	80	57.0%	160	39.8%	1	5	0	0	1	2	3	0	1	0	0	13	2.0%	1.2%	3.2%
Education	0	0	0	0	0.0%	0	0.0%	0	0	0	0	0	0	0	0	0	0	0	0	0.0%	0.0%	0.0%
Engineering	650	405	293	112	62.3%	205	31.5%	1	4	0	18	1	3	8	0	5	0	0	40	3.4%	2.8%	6.2%
Forestry	45	27	21	6	60.0%	16	35.6%	0	1	0	0	1	0	0	0	0	0	0	2	2.2%	2.2%	4.4%
Public Health & Human Sciences	364	230	193	37	63.2%	123	33.8%	1	2	0	1	0	5	2	0	0	0	0	11	1.6%	1.4%	3.0%
Liberal Arts	305	179	137	42	58.7%	115	37.7%	1	0	0	1	1	1	7	0	0	0	0	11	1.3%	2.3%	3.6%
Pharmacy	0	0	0	0	0.0%	0	0.0%	0	0	0	0	0	0	0	0	0	0	0	0	0.0%	0.0%	0.0%
Science	545	336	187	149	61.7%	189	34.7%	5	3	0	1	0	1	5	2	3	0	0	20	3.1%	0.6%	3.7%
University Exploratory Studies Program	315	184	0	184	58.4%	116	36.8%	0	3	0	1	0	4	6	0	1	0	0	15	4.8%	0.0%	4.8%
Veterinary Medicine	0	0	0	0	0.0%	0	0.0%	0	0	0	0	0	0	0	0	0	0	0	0	0.0%	0.0%	0.0%
TOTAL	2,782	1680	1049	631	60.4%	985	35.4%	13	18	0	22	4	16	32	2	10	0	0	117	4.2%		4.2%

**Table 9.1: Fall 2003 First Time, Full Time, Degree Seeking Undergraduate Student Cohort
Net Gain / Loss by College (Fall 2006 - Fall 2012)**

COLLEGE	AG	BUS	ED	ENGR	FOR	PHHS	LA	PHARM	SCI	UESP	VM	Net Gain/Loss	Continued from		Fall 2012 number	Enrollment %
													original cohort	%		
Agricultural Sciences	0	1	0	1	0	1	0	0	5	0	0	8	5	4.3%	13	11.1%
Business	-1	0	0	4	0	0	-3	0	2	3	0	5	13	11.1%	18	15.4%
Education	0	0	0	0	0	0	0	0	0	0	0	0	0	0.0%	0	0.0%
Engineering	-1	-4	0	0	-1	-2	-7	0	-4	1	0	-18	40	34.2%	22	18.8%
Forestry	0	0	0	1	0	0	1	0	0	0	0	2	2	1.7%	4	3.4%
Public Health & Human Sciences	-1	0	0	2	0	0	-1	0	1	4	0	5	11	9.4%	16	13.7%
Liberal Arts	0	3	0	7	-1	1	0	0	5	6	0	21	11	9.4%	32	27.4%
Pharmacy	0	0	0	0	0	0	0	0	2	0	0	2	0	0.0%	2	1.7%
Science	-5	-2	0	4	0	-1	-5	-2	0	1	0	-10	20	17.1%	10	8.5%
University Exploratory Studies Program	0	-3	0	-1	0	-4	-6	0	-1	0	0	-15	15	12.8%	0	0.0%
Veterinary Medicine	0	0	0	0	0	0	0	0	0	0	0	0	0	0.0%	0	0.0%
Total												0	117	100%	117	100%

Source: Office of Institutional Research (1/25/2013)