

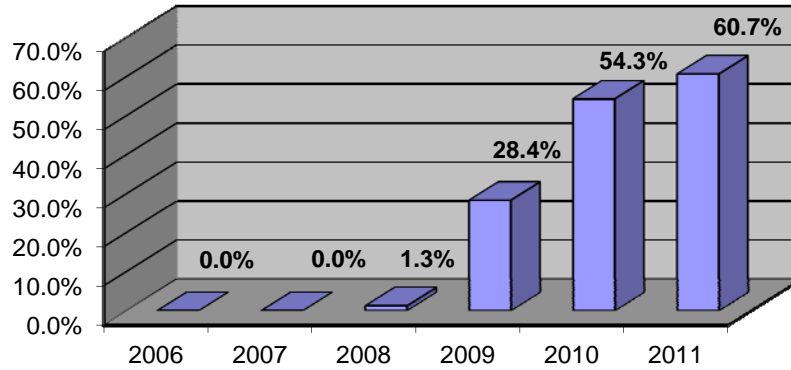
**Oregon State University**  
**Movement in Primary College**  
**Fall Term 2005 Cohort Class**

This is a study of the cohort of first time, full time (credit hours greater than or equal to 12) degree seeking undergraduate students enrolled in the Fall Term of 2005. The study provides detailed information on enrollment, graduation, retention, attrition, and change in college (based on primary major) of the cohort class over a 1-year to 6-year time span. With this study, each college can track the migration patterns of their students and determine the graduation, retention, and attrition rates of students in their college cohort from 2005-2011.

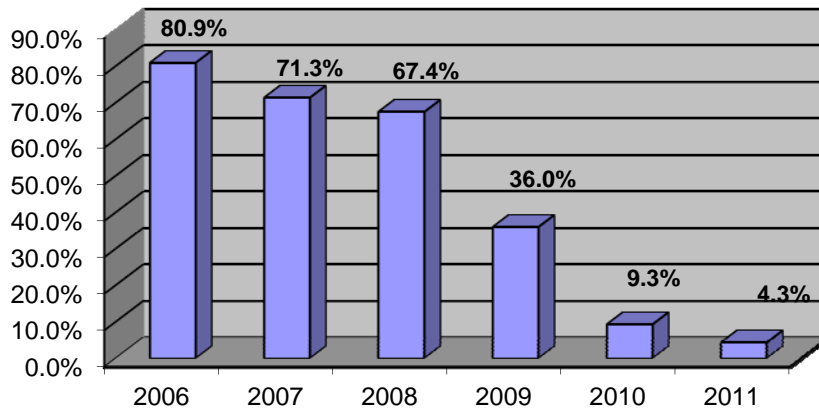
There were 2,795 students in the Fall Term 2005 cohort class enrolled in colleges/programs at the university. Table 1 contains the student graduation, retention, and attrition numbers and percentages for 2009 (4-year), 2010 (5-year) and 2011 (6-year). The data show that in Fall Term 2010, there were 138 students from the cohort continuing their study at the university. Figures 1, 2, and 3 depict the graduation, retention, and attrition rates by year for the Fall Term 2005 cohort class. The six-year graduation rate for Fall Term 2005 cohort was 60.7%. The first year retention rate for the Fall Term 2005 cohort was 80.9%. One year later, 19.1% of the students in the cohort had left OSU.

<b>Table 1: Fall Term 2005 Cohort Graduation, Retention, and Attrition Rates</b>						
<b>Fall 2005 Cohort</b>	<b>2009</b>		<b>2010</b>		<b>2011</b>	
	Number	Percentage	Number	Percentage	Number	Percentage
Graduation	793	28.4%	1,519	54.3%	1,696	60.7%
Continuation	1,005	36.0%	259	9.3%	120	4.3%
Attrition	997	35.7%	1,017	36.4%	979	35.0%
<b>Total</b>	<b>2,795</b>	<b>100.0%</b>	<b>2,795</b>	<b>100.0%</b>	<b>2,795</b>	<b>100.0%</b>

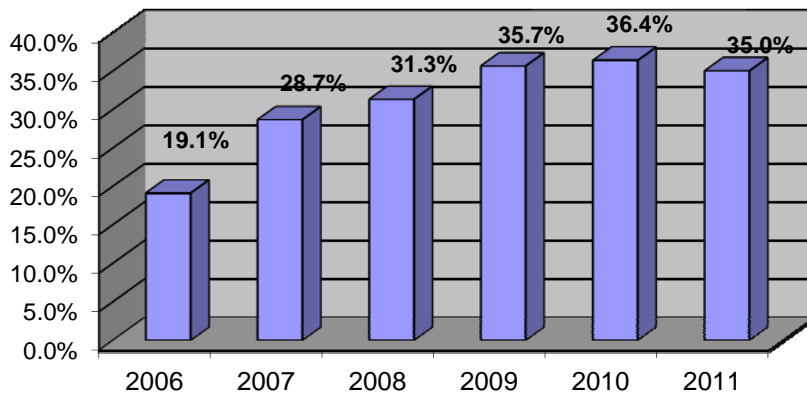
**Figure 1: Graduation Rate by Year**



**Figure 2: Retention Rate by Year**



**Figure 3: Attrition Rate by Year**



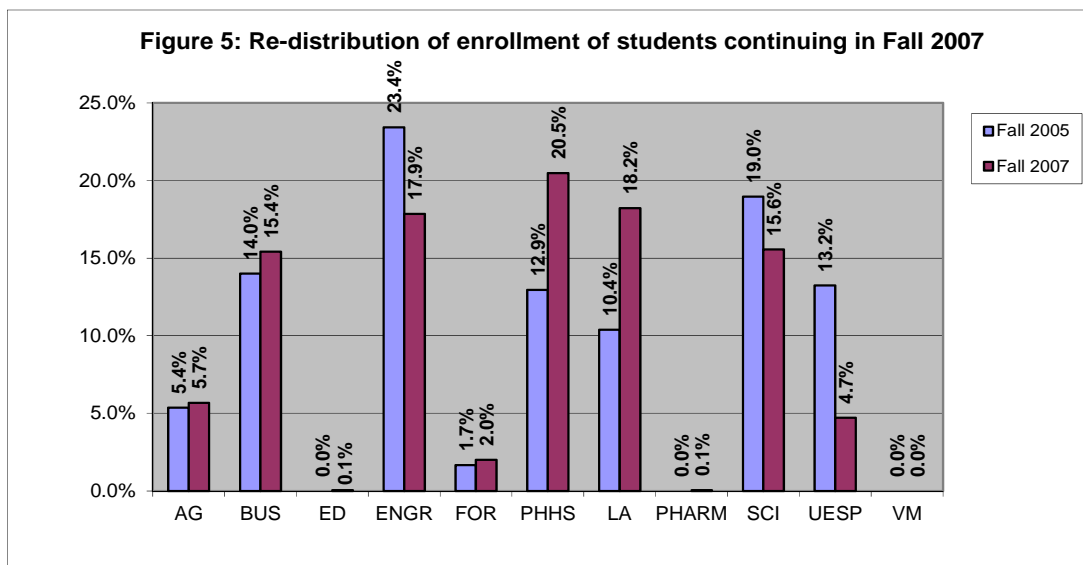
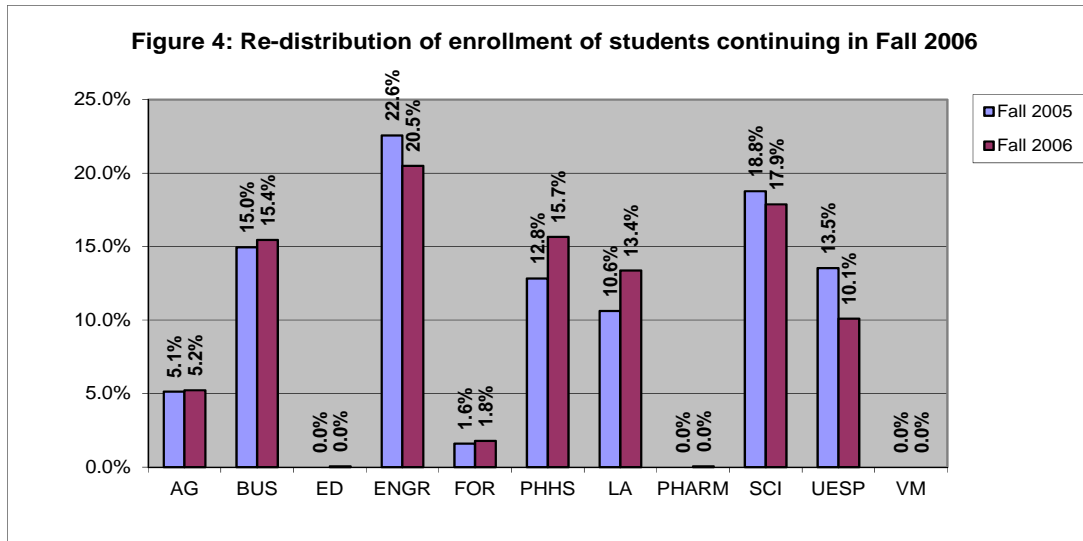
For students who graduated from OSU, a large proportion graduated from colleges other than the one in which they had initially enrolled in Fall Term 2005. Table 2 lists the numbers of students who graduated from their original colleges and from other colleges they transferred to by year. By the end of Summer Term 2011, 60.7% of students (1,696) in the cohort class had graduated; 60.4% of the graduates (1,025) graduated from the same college in which they originally enrolled in Fall 2005 and 39.6% (671) graduated from other colleges. Students who stayed in the same college in which they originally enrolled graduated sooner than those in the cohort who changed colleges.

<b>Fall 2005 Cohort</b>	<b>2009</b>		<b>2010</b>		<b>2011</b>	
	Number	Percentage	Number	Percentage	Number	Percentage
From the same college	539	68.0%	941	61.9%	1,025	60.4%
From other colleges	254	32.0%	578	38.1%	671	39.6%
<b>Total graduation</b>	<b>793</b>	<b>100.0%</b>	<b>1,519</b>	<b>100.0%</b>	<b>1,696</b>	<b>100.0%</b>

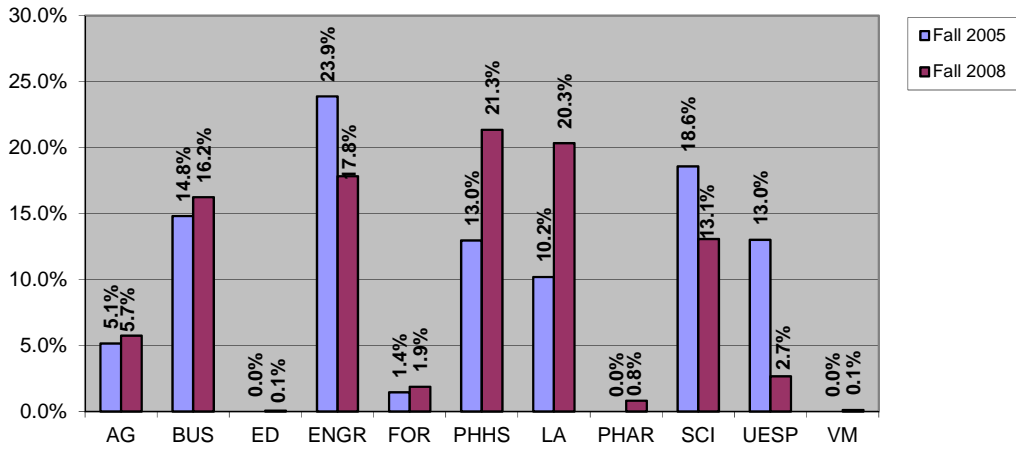
In the group of continuing students, some continued in the same college and some transferred to other colleges. Table 3 contains the net gains and losses of students by college for each year. The Colleges of Engineering, Science and the University Exploratory Studies Program consistently lost students to other colleges. The Colleges of Agricultural Sciences, Forestry, Public Health and Human Sciences (except in year 2011), and Liberal Arts gained students from other colleges each year.

	<b>2006</b>	<b>2007</b>	<b>2008</b>	<b>2009</b>	<b>2010</b>	<b>2011</b>
<b>Agricultural Sciences</b>	2	6	11	17	7	5
<b>Business</b>	11	28	27	26	-1	-3
<b>Education</b>	1	0	1	0	2	4
<b>Engineering</b>	-47	-111	-114	-79	-21	-16
<b>Forestry</b>	4	7	8	9	8	4
<b>Public Health and Human Sciences</b>	64	150	158	84	19	-2
<b>Liberal Arts</b>	62	156	191	132	27	13
<b>Pharmacy</b>	1	1	15	0	0	0
<b>Science</b>	-20	-68	-104	-54	-8	5
<b>University Exploratory Studies Program</b>	-78	-170	-195	-135	-33	-10
<b>Veterinary Medicine</b>	0	0	2	0	0	0

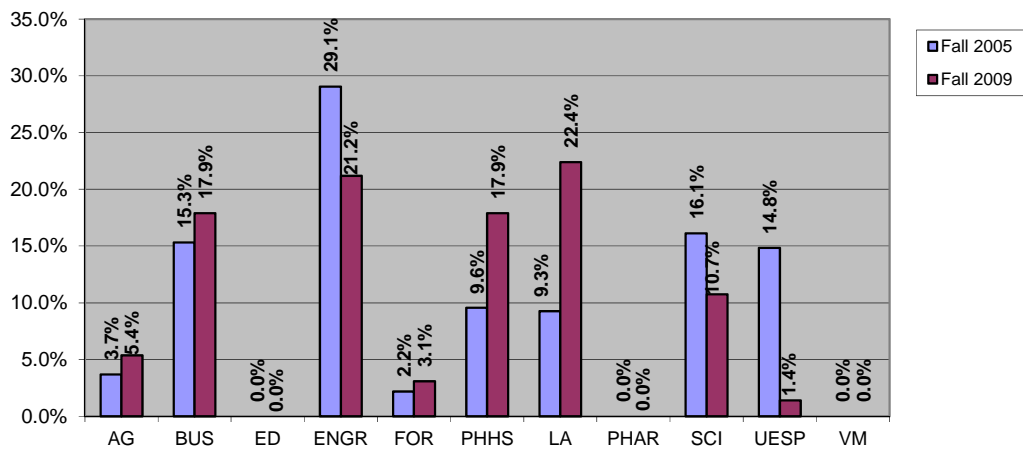
Details on the redistribution of continuing students are provided in Figures 4-9.



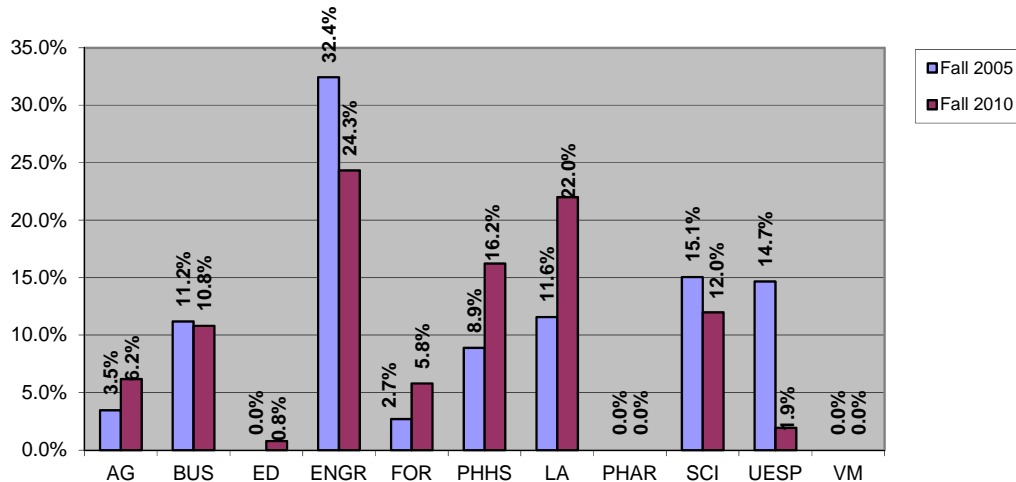
**Figure 6: Re-distribution of enrollment of students continuing in Fall 2008**

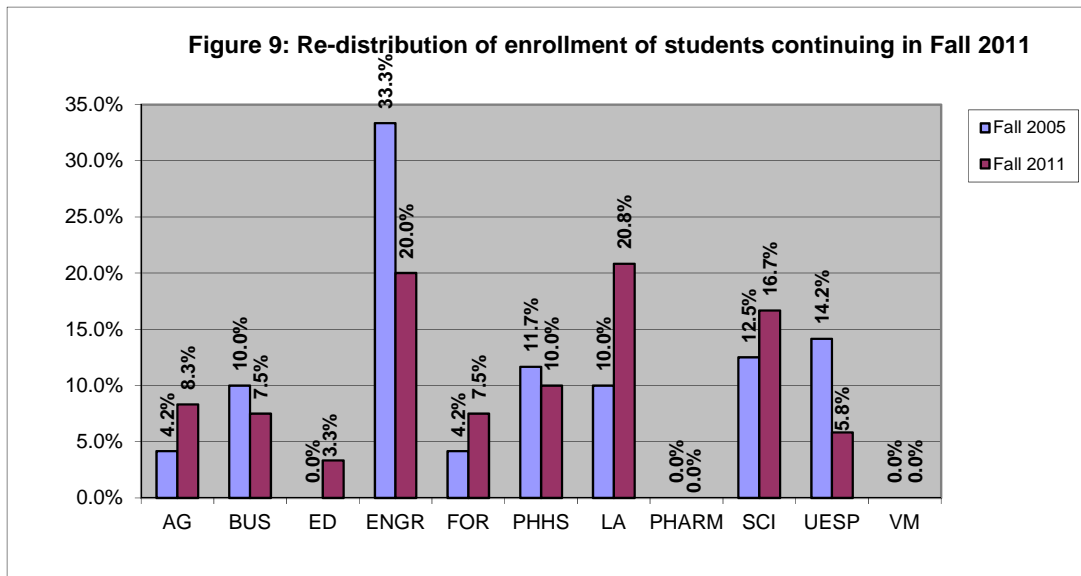


**Figure 7: Re-distribution of enrollment of students continuing in Fall 2009**



**Figure 8: Re-distribution of enrollment of students continuing in Fall 2010**





Tables 4-9 contain retention and graduation data for each college from Fall 2006 to Fall 2011 for the Fall 2005 cohort. The shaded columns in the top table on each page denote the college that students migrated to, listed by college. For example, in Table 4, the College of Agricultural Sciences has 142 students in Fall Term 2005 cohort class. 26 Agricultural Sciences students left OSU after their first year. Of those who stayed, 116 continued in Agricultural Sciences, 2 transferred to Forestry, 2 to Public Health and Human Sciences, 3 to Liberal Arts, 7 to Science, and 1 transferred to University Exploratory Studies Program. Thus, Agricultural Sciences had 10.6% of their cohort migrate to other OSU colleges; 71.1% of the original cohort remained in Agricultural Sciences. The overall retention rate at OSU for this cohort of Agricultural Sciences students was 81.7%.

The second table on each page contains the net gain or loss by college for the freshman cohort. Again, for Agricultural Sciences, 1 students transferred in from Business, 2 from Engineering, 3 from Science, and 1 from Veterinary Medicine. At the same time, Agricultural Sciences lost 1 students to Forestry, 1 to Public Health and Human Sciences, and 3 were lost to Liberal Arts. These changes resulted in a net gain of 2 students.

Over the course of this study, Public Health and Human Sciences and Liberal Arts consistently gained the most students from other colleges. Forestry, Business, and

Agricultural Sciences also consistently received students from other colleges. University Exploratory Studies Program consistently transferred more students to other colleges; this is expected given the purpose of University Exploratory Studies Program. With University Exploratory Studies Program omitted, the College of Engineering had the most students transferring to other OSU colleges over the course of the study.

The graduation results begin in Table 6, Fall 2005 -Fall 2008. For example, after three years (Table 6), one student from the Agricultural Sciences cohort graduated, producing a three-year graduation rate of 0.7%. After four years (Table 7) the number increased to 54 students graduated for a 38.0% graduation rate; 12 of those students graduated from another OSU college and 42 graduated from Agricultural Sciences. For the fifth year (Table 8), 79 students in the Agricultural Sciences cohort had graduated; however, only 58 students graduated from Agricultural Sciences. The other 21 students graduated from other OSU colleges.

The sixth year (Table 9) graduation rate for Agricultural Sciences was 59.2% with a total of 62 students from the Agricultural Sciences cohort graduating in Agricultural Sciences and 22 graduating from other OSU colleges.

Overall, the fourth year graduation data (Table 7) suggests that of those students in the cohort who graduated in four years, about 32.0% (254 out of 793 graduated) were graduating from colleges other than the one in which they had originally enrolled. This number jumps to 38.1% (578 out of 1,519) after five years (Table 8) and increases again to 39.6% (671 out of 1,696) after six years (Table 9).

About 40% of the students who graduated from OSU after six years had transferred to an OSU college that was different from the college in which they had initially enrolled. The implications of this information in terms of advising and helping students to transition from college to college seem particularly appropriate.

**Table 4: Fall 2005 First Time, Full Time, Degree Seeking Undergraduate Student Cohort  
Migration Study ( Fall 2005 - Fall 2006 )**

COLLEGE	Cohort 2005	Grad. Rate	Grad. Rate	Attr. Rate	Attr. Rate	College Migration Pattern												Cont. Rate		Rate
						AG	BUS	ED	ENGR	FOR	PHHS	LA	PHAR	SCI	UESP	VM	Subtotal	Trans.*	College**	
Agricultural Sciences	142	0	0%	26	18.3%	101	0	0	0	2	2	3	0	7	1	0	116	10.6%	71.1%	81.7%
Business	429	0	0%	91	21.2%	1	284	0	7	0	17	15	0	8	6	0	338	12.6%	66.2%	78.8%
Education	0	0	0%	0	0.0%	0	0	0	0	0	0	0	0	0	0	0	0	0.0%	0.0%	0.0%
Engineering	626	0	0%	116	18.5%	2	22	0	429	0	8	12	0	13	24	0	510	12.9%	68.5%	81.5%
Forestry	49	0	0%	13	26.5%	1	1	0	0	31	0	0	0	2	1	0	36	10.2%	63.3%	73.5%
Public Health & Human Sciences	358	0	0%	68	19.0%	1	4	0	0	0	253	17	0	7	8	0	290	10.3%	70.7%	81.0%
Liberal Arts	300	0	0%	60	20.0%	0	7	1	5	0	18	195	0	4	10	0	240	15.0%	65.0%	80.0%
Pharmacy	0	0	0%	0	0.0%	0	0	0	0	0	0	0	0	0	0	0	0	0.0%	0.0%	0.0%
Science	516	0	0%	92	17.8%	10	7	0	8	0	28	15	1	337	18	0	424	16.9%	65.3%	82.2%
University Exploratory Studies Program	375	0	0%	69	18.4%	2	24	0	14	7	28	45	0	26	160	0	306	38.9%	42.7%	81.6%
Veterinary Medicine	0	0	0%	0	0%	0	0	0	0	0	0	0	0	0	0	0	0	0.0%	0.0%	0.0%
<b>TOTAL</b>	<b>2,795</b>	<b>0</b>	<b>0%</b>	<b>535</b>	<b>19.1%</b>	<b>118</b>	<b>349</b>	<b>1</b>	<b>463</b>	<b>40</b>	<b>354</b>	<b>302</b>	<b>1</b>	<b>404</b>	<b>228</b>	<b>0</b>	<b>2,260</b>	<b>80.9%</b>		<b>80.9%</b>

\* Percentage of students transferred to other colleges from the college they originally enrolled in Fall 2005.

\*\* Percentage of students continued in the same college as they originally enrolled in.

**Table 4.1 Fall 2005 First Time, Full Time, Degree Seeking Undergraduate Student Cohort  
Net Gain / Loss by College ( Fall 2005 - Fall 2006 )**

COLLEGE	AG	BUS	ED	ENGR	FOR	PHHS	LA	PHARM	SCI	VM	UESP	Net Gain / Loss	Continued from original cohort		Fall 2006 Enrollment each college	
													%	%		
Agricultural Sciences	0	1	0	2	-1	-1	-3	0	3	1	0	2	116	5.1%	118	5.2%
Business	-1	0	0	15	1	-13	-8	0	-1	18	0	11	338	15.0%	349	15.4%
Education	0	0	0	0	0	0	1	0	0	0	0	1	0	0.0%	1	0.0%
Engineering	-2	-15	0	0	0	-8	-7	0	-5	-10	0	-47	510	22.6%	463	20.5%
Forestry	1	-1	0	0	0	0	0	0	-2	6	0	4	36	1.6%	40	1.8%
Public Health & Human Sciences	1	13	0	8	0	0	1	0	21	20	0	64	290	12.8%	354	15.7%
Liberal Arts	3	8	-1	7	0	-1	0	0	11	35	0	62	240	10.6%	302	13.4%
Pharmacy	0	0	0	0	0	0	0	0	1	0	0	1	0	0.0%	1	0.0%
Science	-3	1	0	5	2	-21	-11	-1	0	8	0	-20	424	18.8%	404	17.9%
University Exploratory Studies Program	-1	-18	0	10	-6	-20	-35	0	-8	0	0	-78	306	13.5%	228	10.1%
Veterinary Medicine	0	0	0	0	0	0	0	0	0	0	0	0	0	0.0%	0	0.0%
<b>Total</b>												<b>0</b>	<b>2,260</b>	<b>100%</b>	<b>2,260</b>	<b>100%</b>



**Table 5: Fall 2005 First Time, Full Time, Degree Seeking Undergraduate Student Cohort Migration Study ( Fall 2005 - Fall 2007 )**

COLLEGE	Cohort 2005	Grad. Total	Same college*	Other college**	Grad. Rate	Attr.	Attr. Rate	College Migration Pattern											Cont. Rate		Retention Rate	
								AG	BUS	ED	ENGR	FOR	PHHS	LA	PHAR	SCI	UESP	VM	Subtotal	Trans.		College
Agricultural Sciences	142	0	0	0	0.0%	35	24.6%	81	1	0	0	3	5	6	0	11	0	0	107	18.3%	57.0%	75.4%
Business	429	0	0	0	0.0%	150	35.0%	4	188	0	9	1	33	31	0	5	8	0	279	21.2%	43.8%	65.0%
Education	0	0	0	0	0.0%	0	0.0%	0	0	0	0	0	0	0	0	0	0	0	0	0.0%	0.0%	0.0%
Engineering	626	0	0	0	0.0%	159	25.4%	7	38	0	332	1	12	30	0	29	18	0	467	21.6%	53.0%	74.6%
Forestry	49	0	0	0	0.0%	16	32.7%	3	3	0	0	23	0	3	0	1	0	0	33	20.4%	46.9%	67.3%
Public Health & Human Sciences	358	0	0	0	0.0%	100	27.9%	1	5	0	0	0	215	26	0	11	0	0	258	12.0%	60.1%	72.1%
Liberal Arts	300	0	0	0	0.0%	93	31.0%	1	9	1	4	0	29	155	0	4	4	0	207	17.3%	51.7%	69.0%
Pharmacy	0	0	0	0	0.0%	0	0.0%	0	0	0	0	0	0	0	0	0	0	0	0	0.0%	0.0%	0.0%
Science	516	0	0	0	0.0%	138	26.7%	12	13	0	11	5	51	30	1	249	6	0	378	25.0%	48.3%	73.3%
University Exploratory Studies Program	375	0	0	0	0.0%	111	29.6%	4	32	0	18	7	63	82	0	24	34	0	264	61.3%	9.1%	70.4%
Veterinary Medicine	0	0	0	0	0.0%	0	0.0%	0	0	0	0	0	0	0	0	0	0	0	0	0.0%	0.0%	0.0%
<b>TOTAL</b>	<b>2,795</b>	<b>0</b>	<b>0</b>	<b>0</b>	<b>0.0%</b>	<b>802</b>	<b>28.7%</b>	<b>113</b>	<b>289</b>	<b>1</b>	<b>374</b>	<b>40</b>	<b>408</b>	<b>363</b>	<b>1</b>	<b>334</b>	<b>70</b>	<b>0</b>	<b>1,993</b>	<b>71.3%</b>		<b>71.3%</b>

\* Number of students graduated from the colleges same as that they enrolled originally in Fall 2005.

\*\* Number of students transferred to other colleges from their originally enrolled cohort college and graduated from the colleges they've transferred to.

**Table 5.1: Fall 2005 First Time, Full Time, Degree Seeking Undergraduate Student Cohort Net Gain / Loss by College ( Fall 2005- Fall 2007 )**

COLLEGE	AG	BUS	ED	ENGR	FOR	PHHS	LA	PHARM	SCI	UESP	VM	Net Gain/Loss	Continued from orig cohort	%	Fall 2007 Enrollment each college	%
Agricultural Sciences	0	3	0	7	0	-4	-5	0	1	4	0	6	107	5.4%	113	5.7%
Business	-3	0	0	47	2	-28	-22	0	8	24	0	28	279	14.0%	307	15.4%
Education	0	0	0	0	0	0	1	0	0	0	0	1	0	0.0%	1	0.1%
Engineering	-7	-47	0	0	-1	-12	-26	0	-18	0	0	-111	467	23.4%	356	17.9%
Forestry	0	-2	0	1	0	0	-3	0	4	7	0	7	33	1.7%	40	2.0%
Public Health & Human Sciences	4	28	0	12	0	0	3	0	40	63	0	150	258	12.9%	408	20.5%
Liberal Arts	5	22	-1	26	3	-3	0	0	26	78	0	156	207	10.4%	363	18.2%
Pharmacy	0	0	0	0	0	0	0	0	1	0	0	1	0	0.0%	1	0.1%
Science	-1	-8	0	18	-4	-40	-26	-1	0	-6	0	-68	378	19.0%	310	15.6%
University Exploratory Studies Program	-4	-24	0	0	-7	-63	-78	0	6	0	0	-170	264	13.2%	94	4.7%
Veterinary Medicine	0	0	0	0	0	0	0	0	0	0	0	0	0	0.0%	0	0.0%
<b>Total</b>												<b>0</b>	<b>1,993</b>	<b>100%</b>	<b>1,993</b>	<b>100%</b>

**Table 6: Fall 2005 First Time, Full Time, Degree Seeking Undergraduate Student Cohort Migration Study ( Fall 2005 - Fall 2008 )**

COLLEGE	Cohort 2005	Grad. Total	Same college*	Other college**	Grad. Rate	Attr. Rate	Attr. Rate	College Migration Pattern												Cont. Rate		Retention Rate
								AG	BUS	ED	ENGR	FOR	PHHS	LA	PHAR	SCI	UESP	VM	Subtotal	Trans.	College	
Agricultural Sciences	142	1	1	0	0.7%	44	31.0%	67	1	0	0	3	6	9	0	9	0	2	97	21.1%	47.2%	68.3%
Business	429	3	2	1	0.7%	147	34.3%	4	183	0	5	1	39	35	0	4	8	0	279	22.4%	42.7%	65.0%
Education	0	0	0	0	0.0%	0	0.0%	0	0	0	0	0	0	0	0	0	0	0	0	0.0%	0.0%	0.0%
Engineering	626	2	2	0	0.3%	174	27.8%	9	47	0	309	1	14	37	0	31	2	0	450	22.5%	49.4%	71.9%
Forestry	49	1	1	0	2.0%	21	42.9%	3	3	0	0	17	0	3	0	1	0	0	27	20.4%	34.7%	55.1%
Public Health & Human Sciences	358	7	7	0	2.0%	107	29.9%	3	6	0	0	0	199	28	0	7	1	0	244	12.6%	55.6%	68.2%
Liberal Arts	300	6	6	0	2.0%	102	34.0%	1	9	1	3	1	27	146	0	2	2	0	192	15.3%	48.7%	64.0%
Pharmacy	0	0	0	0	0.0%	0	0.0%	0	0	0	0	0	0	0	0	0	0	0	0	0.0%	0.0%	0.0%
Science	516	6	5	1	1.2%	160	31.0%	12	14	0	14	4	53	40	15	192	6	0	350	30.6%	37.2%	67.8%
University Exploratory Studies Program	375	9	0	9	2.4%	121	32.3%	9	33	0	15	8	64	85	0	20	11	0	245	65.3%	0.0%	65.3%
Veterinary Medicine	0	0	0	0	0.0%	0	0.0%	0	0	0	0	0	0	0	0	0	0	0	0	0.0%	0.0%	0.0%
<b>TOTAL</b>	<b>2,795</b>	<b>35</b>	<b>24</b>	<b>11</b>	<b>1.3%</b>	<b>876</b>	<b>31.3%</b>	<b>108</b>	<b>296</b>	<b>1</b>	<b>346</b>	<b>35</b>	<b>402</b>	<b>383</b>	<b>15</b>	<b>266</b>	<b>30</b>	<b>2</b>	<b>1,884</b>	<b>67.4%</b>		<b>67.4%</b>

\* Number of students graduated from the colleges same as that they enrolled originally in Fall 2005.

\*\* Number of students transferred to other colleges from their originally enrolled cohort college and graduated from the colleges they've transferred to.

**Table 6.1: Fall 2005 First Time, Full Time, Degree Seeking Undergraduate Student Cohort Net Gain / Loss by College ( Fall 2005 - Fall 2008 )**

COLLEGE	AG	BUS	ED	ENGR	FOR	PHHS	LA	PHAR	SCI	UESP	VM	Net Gain/Loss	Cont. from orig. cohort	%	Fall 2008 Enrollment college	%
Agricultural Sciences	0	3	0	9	0	-3	-8	0	3	9	-2	11	97	5.1%	108	5.7%
Business	-3	0	0	52	2	-33	-26	0	10	25	0	27	279	14.8%	306	16.2%
Education	0	0	0	0	0	0	1	0	0	0	0	1	0	0.0%	1	0.1%
Engineering	-9	-52	0	0	-1	-14	-34	0	-17	13	0	-114	450	23.9%	336	17.8%
Forestry	0	-2	0	1	0	0	-2	0	3	8	0	8	27	1.4%	35	1.9%
Public Health & Human Sciences	3	33	0	14	0	0	-1	0	46	63	0	158	244	13.0%	402	21.3%
Liberal Arts	8	26	-1	34	2	1	0	0	38	83	0	191	192	10.2%	383	20.3%
Pharmacy	0	0	0	0	0	0	0	0	15	0	0	15	0	0.0%	15	0.8%
Science	-3	-10	0	17	-3	-46	-38	-15	0	-6	0	-104	350	18.6%	246	13.1%
University Exploratory Studies Program	-9	-25	0	-13	-8	-63	-83	0	6	0	0	-195	245	13.0%	50	2.7%
Veterinary Medicine	2	0	0	0	0	0	0	0	0	0	0	2	0	0.0%	2	0.1%
<b>Total</b>												<b>0</b>	<b>1,884</b>	<b>100%</b>	<b>1,884</b>	<b>100%</b>

Table 7: Fall 2005 First Time, Full Time, Degree Seeking Undergraduate Student Cohort Migration Study ( Fall 2005 - Fall 2009 )																						
COLLEGE	Cohort 2005	Grad. Total	Same college	Other college	Grad. Rate	Attr.	Attr. Rate	College Migration Pattern												Cont. Rate		Retention Rate
								AG	BUS	ED	ENGR	FOR	PHHS	LA	PHAR	SCI	UESP	VM	Subtotal	Trans.	College	
Agricultural Sciences	142	54	42	12	38.0%	51	35.9%	23	1	0	0	3	3	2	0	5	0	0	37	9.9%	16.2%	26.1%
Business	429	114	86	28	26.6%	161	37.5%	3	94	0	5	1	17	28	0	0	6	0	154	14.0%	21.9%	35.9%
Education	0	0	0	0	0.0%	0	0.0%	0	0	0	0	0	0	0	0	0	0	0	0	0.0%	0.0%	0.0%
Engineering	626	119	80	39	19.0%	215	34.3%	8	39	0	184	3	10	30	0	15	3	0	292	46.6%	0.0%	46.6%
Forestry	49	10	8	2	20.4%	17	34.7%	4	2	0	0	12	0	3	0	1	0	0	22	44.9%	0.0%	44.9%
Public Health & Human Sciences	358	146	130	16	40.8%	116	32.4%	3	5	0	0	1	71	14	0	2	0	0	96	26.8%	0.0%	26.8%
Liberal Arts	300	92	77	15	30.7%	115	38.3%	1	5	0	3	1	18	62	0	1	2	0	93	10.3%	20.7%	31.0%
Pharmacy	0	0	0	0	0.0%	0	0.0%	0	0	0	0	0	0	0	0	0	0	0	0	0.0%	0.0%	0.0%
Science	516	169	116	53	32.8%	185	35.9%	5	8	0	13	4	28	30	0	74	0	0	162	17.1%	14.3%	31.4%
University Exploratory Studies Program	375	89	0	89	23.7%	137	36.5%	7	26	0	8	6	33	56	0	10	3	0	149	38.9%	0.8%	39.7%
Veterinary Medicine	0	0	0	0	0.0%	0	0.0%	0	0	0	0	0	0	0	0	0	0	0	0	0.0%	0.0%	0.0%
<b>TOTAL</b>	<b>2,795</b>	<b>793</b>	<b>539</b>	<b>254</b>	<b>28.4%</b>	<b>997</b>	<b>35.7%</b>	<b>54</b>	<b>180</b>	<b>0</b>	<b>213</b>	<b>31</b>	<b>180</b>	<b>225</b>	<b>0</b>	<b>108</b>	<b>14</b>	<b>0</b>	<b>1005</b>	<b>36.0%</b>		<b>36.0%</b>

Table 7.1: Fall 2005 First Time, Full Time, Degree Seeking Undergraduate Student Cohort Net Gain / Loss by College ( Fall 2005 - Fall 2009 )																
COLLEGE	AG	BUS	ED	ENGR	FOR	PHHS	LA	PHAR	SCI	UESP	VM	Net Gain/Loss	Cont. from orig. cohort		Fall 2009 Enrollment each college	
													%	%	%	%
Agricultural Sciences	0	2	0	8	1	0	-1	0	0	7	0	17	37	3.7%	54	5.4%
Business	-2	0	0	34	1	-12	-23	0	8	20	0	26	154	15.3%	180	17.9%
Education	0	0	0	0	0	0	0	0	0	0	0	0	0	0.0%	0	0.0%
Engineering	-8	-34	0	0	-3	-10	-27	0	-2	5	0	-79	292	29.1%	213	21.2%
Forestry	-1	-1	0	3	0	1	-2	0	3	6	0	9	22	2.2%	31	3.1%
Public Health & Human Sciences	0	12	0	10	-1	0	4	0	26	33	0	84	96	9.6%	180	17.9%
Liberal Arts	1	23	0	27	2	-4	0	0	29	54	0	132	93	9.3%	225	22.4%
Pharmacy	0	0	0	0	0	0	0	0	0	0	0	0	0	0.0%	0	0.0%
Science	0	-8	0	2	-3	-26	-29	0	0	10	0	-54	162	16.1%	108	10.7%
University Exploratory Studies Program	-7	-20	0	-5	-6	-33	-54	0	-10	0	0	-135	149	14.8%	14	1.4%
Veterinary Medicine	0	0	0	0	0	0	0	0	0	0	0	0	0	0.0%	0	0.0%
<b>Total</b>												<b>0</b>	<b>1005</b>	<b>100%</b>	<b>1005</b>	<b>100%</b>

**Table 8: Fall 2005 First Time, Full Time, Degree Seeking Undergraduate Student Cohort  
Migration Study ( Fall 2005 - Fall 2010 )**

COLLEGE	Cohort 2005	Grad. Total	Same college	Other college	Grad. Rate	Attr.	Attr. Rate	College Migration Pattern											Cont. Rate		Retention Rate	
								AG	BUS	ED	ENGR	FOR	PHHS	LA	PHAR	SCI	UESP	VM	Subtotal	Trans.		College
Agricultural Sciences	142	79	58	21	55.6%	54	38.0%	6	1	0	0	0	0	1	0	1	0	0	9	2.1%	4.2%	6.3%
Business	429	226	158	68	52.7%	174	40.6%	1	11	1	2	1	4	7	0	0	2	0	29	4.2%	2.6%	6.8%
Education	0	0	0	0	0.0%	0	0.0%	0	0	0	0	0	0	0	0	0	0	0	0	0.0%	0.0%	0.0%
Engineering	626	343	237	106	54.8%	199	31.8%	1	6	0	52	3	5	8	0	8	1	0	84	13.4%	0.0%	13.4%
Forestry	49	23	13	10	46.9%	19	38.8%	0	0	0	0	6	0	0	0	1	0	0	7	14.3%	0.0%	14.3%
Public Health & Human Sciences	358	214	182	32	59.8%	121	33.8%	2	2	1	0	0	14	3	0	1	0	0	23	6.4%	0.0%	6.4%
Liberal Arts	300	144	114	30	48.0%	126	42.0%	0	2	0	2	0	5	20	0	1	0	0	30	3.3%	6.7%	10.0%
Pharmacy	0	0	0	0	0.0%	0	0.0%	0	0	0	0	0	0	0	0	0	0	0	0	0.0%	0.0%	0.0%
Science	516	292	179	113	56.6%	185	35.9%	2	2	0	5	2	7	7	0	14	0	0	39	4.8%	2.7%	7.6%
University Exploratory Studies Program	375	198	0	198	52.8%	139	37.1%	4	4	0	2	3	7	11	0	5	2	0	38	9.6%	0.5%	10.1%
Veterinary Medicine	0	0	0	0	0.0%	0	0.0%	0	0	0	0	0	0	0	0	0	0	0	0	0.0%	0.0%	0.0%
<b>TOTAL</b>	<b>2,795</b>	<b>1519</b>	<b>941</b>	<b>578</b>	<b>54.3%</b>	<b>1017</b>	<b>36.4%</b>	<b>16</b>	<b>28</b>	<b>2</b>	<b>63</b>	<b>15</b>	<b>42</b>	<b>57</b>	<b>0</b>	<b>31</b>	<b>5</b>	<b>0</b>	<b>259</b>	<b>9.3%</b>		<b>9.3%</b>

**Table 8.1: Fall 2005 First Time, Full Time, Degree Seeking Undergraduate Student Cohort  
Net Gain / Loss by College ( Fall 2005 - Fall 2010 )**

COLLEGE	AG	BUS	ED	ENGR	FOR	PHHS	LA	PHAR	SCI	UESP	VM	Net Gain/Loss	Continued from original cohort	%	Fall 2010 Enrollment Number	%
Agricultural Sciences	0	0	0	1	0	2	-1	0	1	4	0	7	9	3.5%	16	6.2%
Business	0	0	-1	4	-1	-2	-5	0	2	2	0	-1	29	11.2%	28	10.8%
Education	0	1	0	0	0	1	0	0	0	0	0	2	0	0.0%	2	0.8%
Engineering	-1	-4	0	0	-3	-5	-6	0	-3	1	0	-21	84	32.4%	63	24.3%
Forestry	0	1	0	3	0	0	0	0	1	3	0	8	7	2.7%	15	5.8%
Public Health & Human Sciences	-2	2	-1	5	0	0	2	0	6	7	0	19	23	8.9%	42	16.2%
Liberal Arts	1	5	0	6	0	-2	0	0	6	11	0	27	30	11.6%	57	22.0%
Pharmacy	0	0	0	0	0	0	0	0	0	0	0	0	0	0.0%	0	0.0%
Science	-1	-2	0	3	-1	-6	-6	0	0	5	0	-8	39	15.1%	31	12.0%
University Exploratory Studies Program	-4	-2	0	-1	-3	-7	-11	0	-5	0	0	-33	38	14.7%	5	1.9%
Veterinary Medicine	0	0	0	0	0	0	0	0	0	0	0	0	0	0.0%	0	0.0%
<b>Total</b>												<b>0</b>	<b>259</b>	<b>100%</b>	<b>259</b>	<b>100%</b>

**Table 9: Fall 2005 First Time, Full Time, Degree Seeking Undergraduate Student Cohort  
Migration Study ( Fall 2005 - Fall 2011 )**

COLLEGE	Cohort 2005	Grad. Total	Same college	Other college	Grad. Rate	Attr.	Attr. Rate	College Migration Pattern											Cont. Rate		Retention Rate	
								AG	BUS	ED	ENGR	FOR	P HHS	LA	PHARM	SCI	UESP	VM	Subtotal	Trans.		College
Agricultural Sciences	142	84	62	22	59.2%	53	37.3%	4	1	0	0	0	0	0	0	0	0	0	5	0.7%	2.8%	3.5%
Business	429	251	173	78	58.5%	166	38.7%	0	2	0	0	2	2	2	0	2	2	0	12	2.3%	0.5%	2.8%
Education	0	0	0	0	0.0%	0	0.0%	0	0	0	0	0	0	0	0	0	0	0	0	0.0%	0.0%	0.0%
Engineering	626	397	273	124	63.4%	189	30.2%	1	3	0	23	2	1	6	0	4	0	0	40	2.7%	3.7%	6.4%
Forestry	49	24	14	10	49.0%	20	40.8%	0	1	0	1	2	0	0	0	1	0	0	5	6.1%	4.1%	10.2%
Public Health & Human Sciences	358	230	192	38	64.2%	114	31.8%	1	1	2	0	0	5	3	0	1	1	0	14	2.5%	1.4%	3.9%
Liberal Arts	300	166	128	38	55.3%	122	40.7%	0	1	1	0	1	1	6	0	1	1	0	12	2.0%	2.0%	4.0%
Pharmacy	0	0	0	0	0.0%	0	0.0%	0	0	0	0	0	0	0	0	0	0	0	0	0.0%	0.0%	0.0%
Science	516	319	183	136	61.8%	182	35.3%	3	0	1	0	1	0	2	0	7	1	0	15	1.6%	1.4%	2.9%
University Exploratory Studies Program	375	225	0	225	60.0%	133	35.5%	1	0	0	0	1	3	6	0	4	2	0	17	4.0%	0.5%	4.5%
Veterinary Medicine	0	0	0	0	0.0%	0	0.0%	0	0	0	0	0	0	0	0	0	0	0	0	0.0%	0.0%	0.0%
<b>TOTAL</b>	<b>2,795</b>	<b>1696</b>	<b>1025</b>	<b>671</b>	<b>60.7%</b>	<b>979</b>	<b>35.0%</b>	<b>10</b>	<b>9</b>	<b>4</b>	<b>24</b>	<b>9</b>	<b>12</b>	<b>25</b>	<b>0</b>	<b>20</b>	<b>7</b>	<b>0</b>	<b>120</b>	<b>4.3%</b>		<b>4.3%</b>

**Table 9.1: Fall 2003 First Time, Full Time, Degree Seeking Undergraduate Student Cohort  
Net Gain / Loss by College ( Fall 2005 - Fall 2011 )**

COLLEGE	AG	BUS	ED	ENGR	FOR	P HHS	LA	PHARM	SCI	UESP	VM	Net Gain/Loss	Continued from		Fall 2011 Enrollment number	Enrollment %
													original cohort	%		
Agricultural Sciences	0	-1	0	1	0	1	0	0	3	1	0	5	5	4.2%	10	8.3%
Business	1	0	0	3	-1	-1	-1	0	-2	-2	0	-3	12	10.0%	9	7.5%
Education	0	0	0	0	0	2	1	0	1	0	0	4	0	0.0%	4	3.3%
Engineering	-1	-3	0	0	-1	-1	-6	0	-4	0	0	-16	40	33.3%	24	20.0%
Forestry	0	1	0	1	0	0	1	0	0	1	0	4	5	4.2%	9	7.5%
Public Health & Human Sciences	-1	1	-2	1	0	0	-2	0	-1	2	0	-2	14	11.7%	12	10.0%
Liberal Arts	0	1	-1	6	-1	2	0	0	1	5	0	13	12	10.0%	25	20.8%
Pharmacy	0	0	0	0	0	0	0	0	0	0	0	0	0	0.0%	0	0.0%
Science	-3	2	-1	4	0	1	-1	0	0	3	0	5	15	12.5%	20	16.7%
University Exploratory Studies Program	-1	2	0	0	-1	-2	-5	0	-3	0	0	-10	17	14.2%	7	5.8%
Veterinary Medicine	0	0	0	0	0	0	0	0	0	0	0	0	0	0.0%	0	0.0%
<b>Total</b>												<b>0</b>	<b>120</b>	<b>100%</b>	<b>120</b>	<b>100%</b>

Source: Office of Institutional Research (3/16/2012)