

Migration Study on Fall Term 2001 Cohort

This is a migration study on the cohort of first time, full time (credit hours greater than or equal to 12), and degree seeking undergraduate students enrolled in the Fall Term of 2001. The study provides detailed information on enrollment, graduation, retention, attrition and migration of the cohort class over a 1-year to 6-year time span. With this study, each college can track the migration patterns of their students and determine the graduation, retention, and attrition rates of students in their college cohort from 2001-2007.

There were 3,118 students in the Fall Term 2001 cohort class, enrolled in 10 colleges/programs at the university. Table 1 contains the student graduation, retention, and attrition numbers and percentages for 2005 (4-year), 2006 (5-year) and 2007 (6-year). The data showed that in Fall Term 2007, there were 131 students from the cohort continuing their study in the university. Figures 1, 2, and 3 depict the graduation rate, retention rate, and attrition rate by year for the Fall Term 2001 cohort class. The six-year graduation rate for Fall Term 2001 cohort was 60.9%. The first year retention rate for the Fall Term 2001 cohort was 79.5%. One year later, 20% of the students in the cohort had left OSU.

Table 1: Fall Term 2001 Cohort Graduation, Retention, and Attrition Rates						
Fall 2001 Cohort	2005		2006		2007	
	Number	Percentage	Number	Percentage	Number	Percentage
Graduation	954	30.6%	1,709	54.8%	1,898	60.9%
Continuation	1,055	33.8%	314	10.1%	131	4.2%
Attrition	1,109	35.6%	1,095	35.1%	1,089	34.9%
Total	3,118	100.0%	3,118	100.0%	3,118	100.0%

Figure 1: Graduation Rate by Year

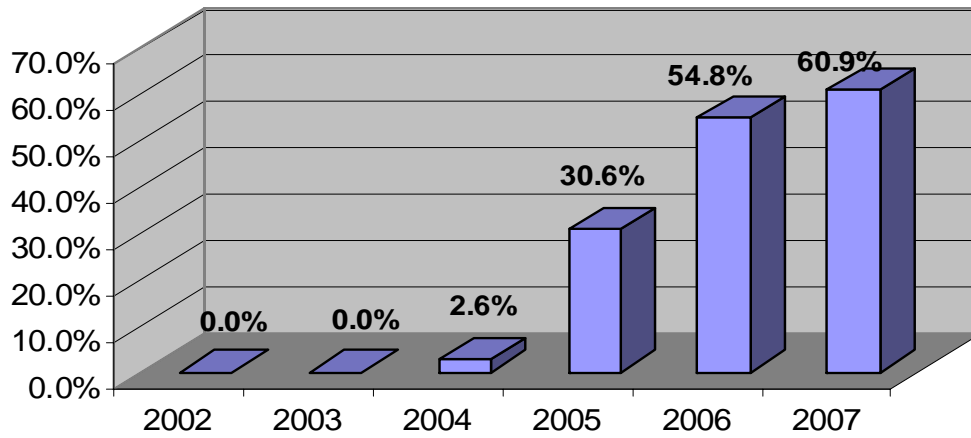


Figure 2: Retention Rate by Year

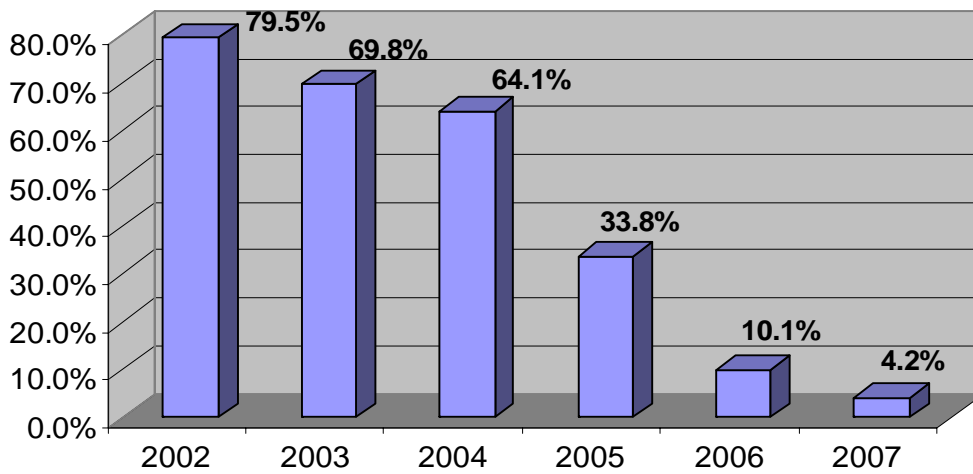
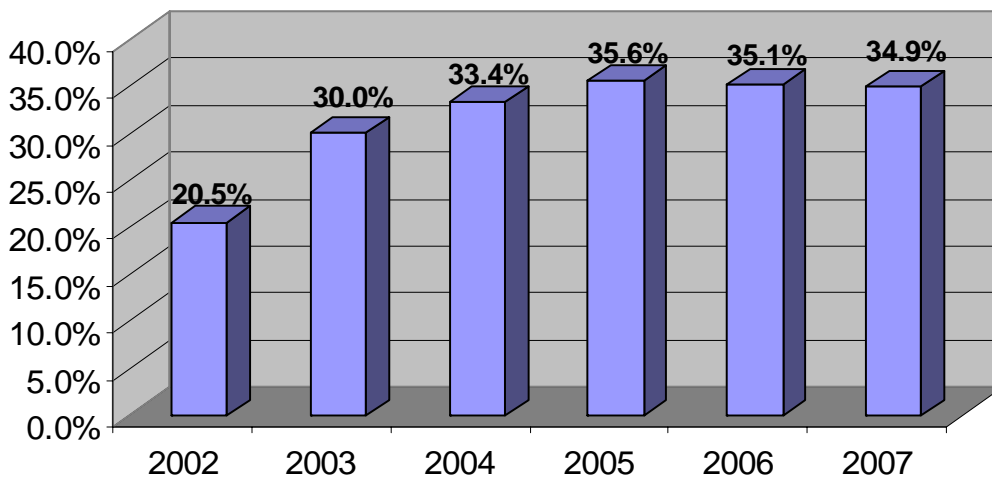


Figure 3: Attrition Rate by Year



For students who graduated from OSU, a rather large proportion graduated from colleges other than the one in which they had initially enrolled in Fall Term 2001. Table 2 lists the numbers of students who graduated from their original colleges and from other colleges transferred to by year. By the end of Summer Term 2007, 60.9 percent of students (1,898) in the cohort class had graduated; 60.2 percent of them (1,142) graduated from the same colleges in which they originally enrolled in fall 2001 and 39.8 percent (756) graduated from other colleges. Students who stayed in the same college in which they had originally enrolled graduated sooner than others in the cohort who had changed colleges did.

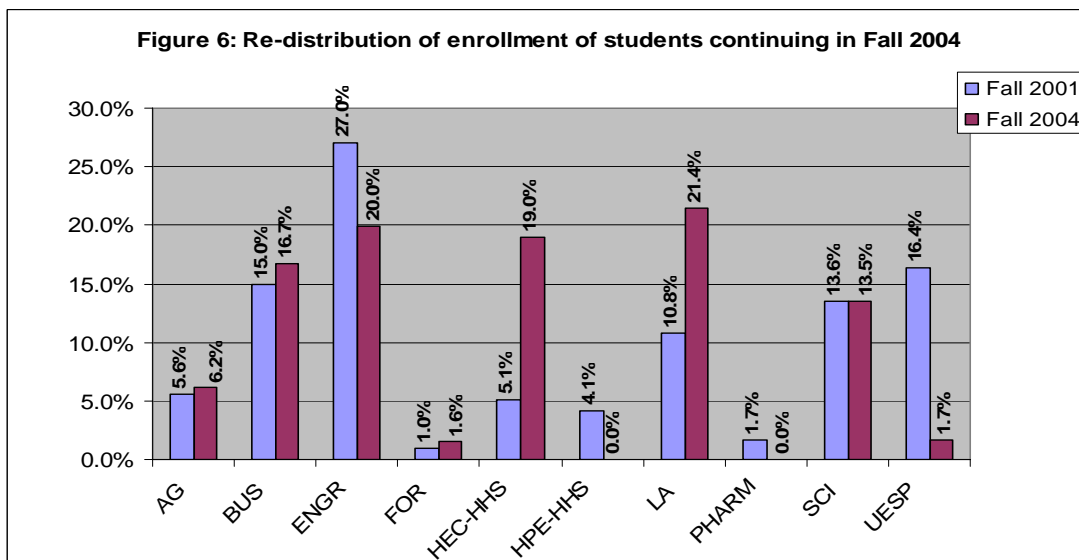
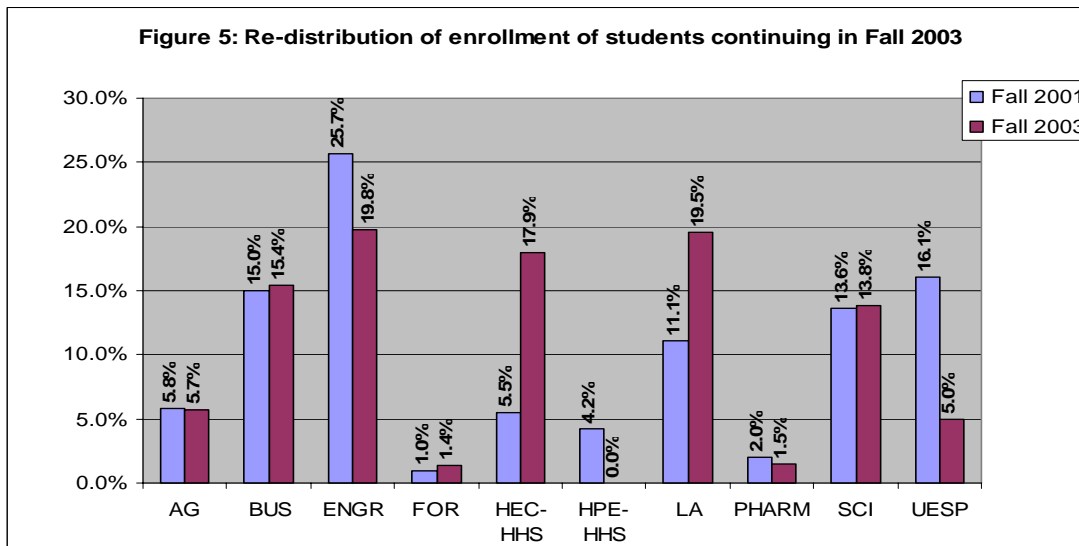
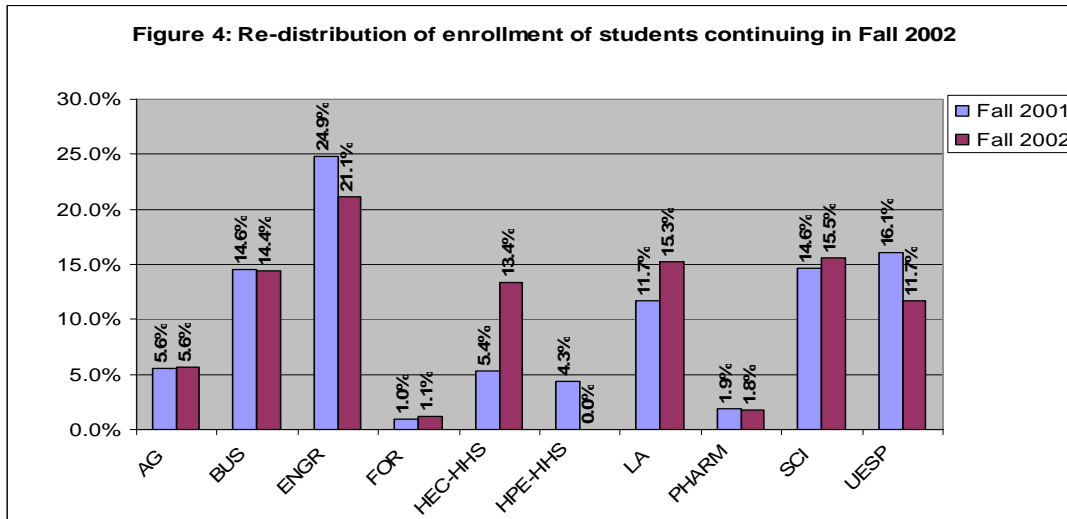
Fall 2001 Cohort	2005		2006		2007	
	Number	Percentage	Number	Percentage	Number	Percentage
From same college	595	62.4%	1,042	61.0%	1,142	60.2%
From other colleges	359	37.6%	667	39.0%	756	39.8%
Total graduation	954	100.0%	1,709	100.0%	1,898	100.0%

In the group of continuing students, some continued in the same college, and some transferred to other colleges. Table 3 contains the net gains or losses of students by college in each year. The College of Engineering, College of Science, and the University Exploratory Studies Program consistently lost students to other colleges. The College of Forestry, the College of Health and Human Sciences (Home Economics and Education, College of Health & Human Performance), and the College of Liberal Arts gained students from other colleges each year.

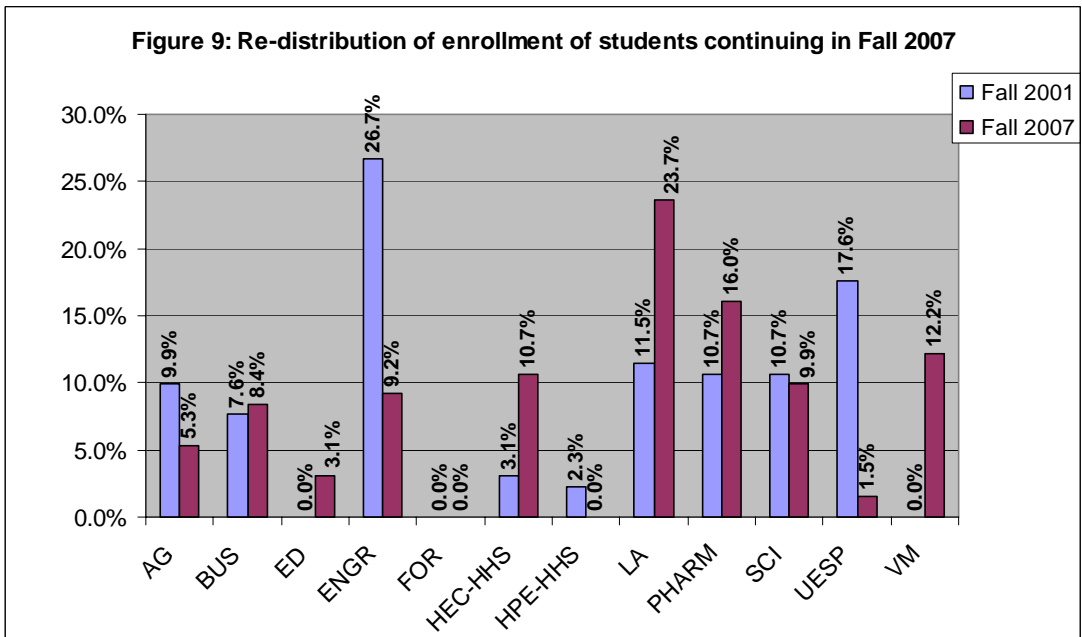
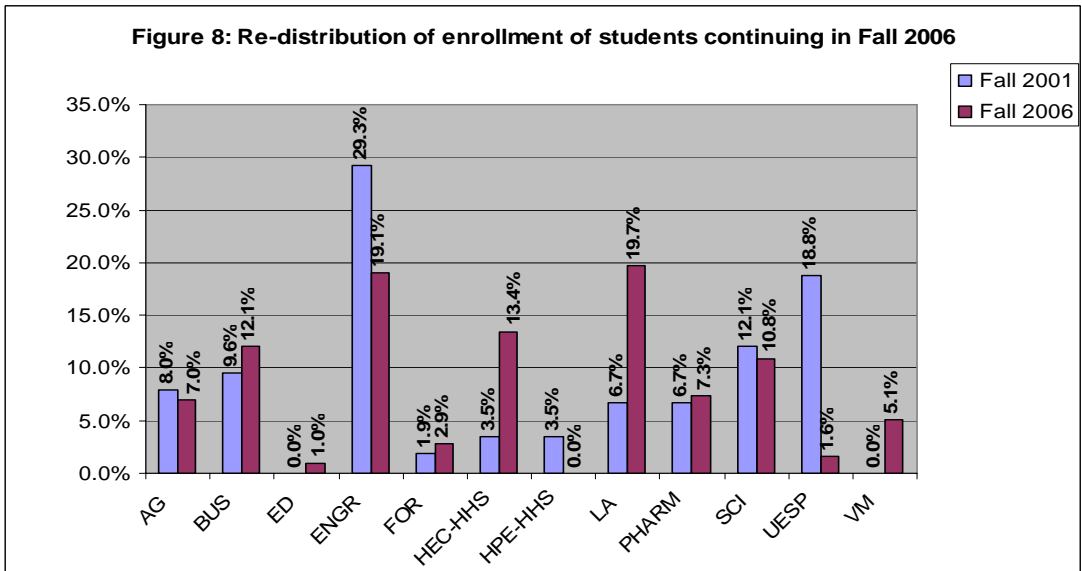
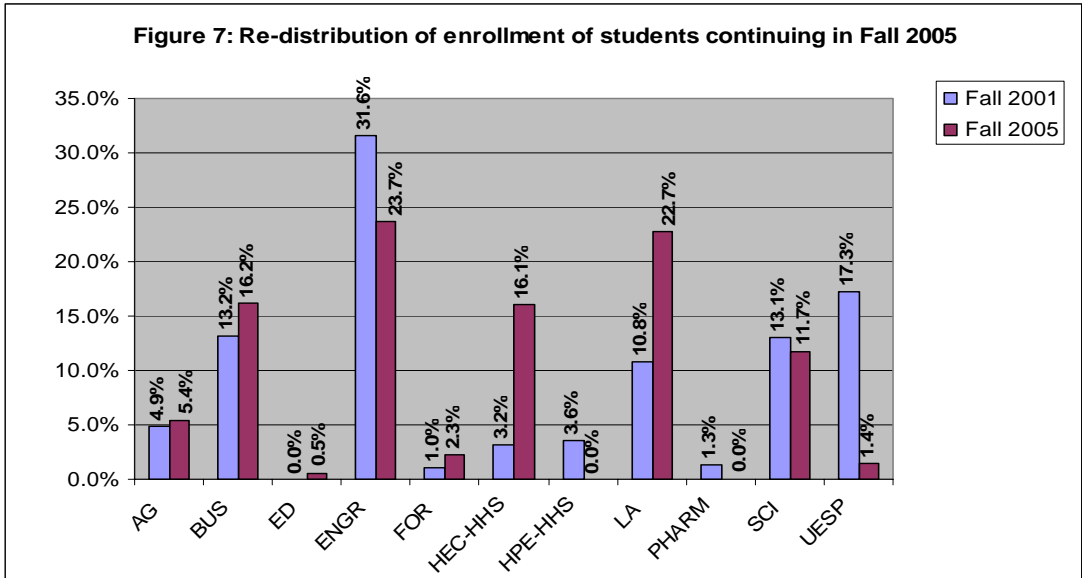
	2002	2003	2004	2005	2006	2007
Agricultural Sciences	1	-1	11	5	-3	-6
Business	-4	8	35	32	8	1
Education	0	0	0	0	0	4
Engineering	-92	-128	-140	-83	-32	-23
Forestry	4	9	12	13	3	0
Home Economics and Education*	199	271	278	136	31	10
Health & Human Performance*	-107	-92	-82	-38	-11	-3
Liberal Arts	87	183	213	126	41	16
Pharmacy**	-2	-12	-33	-14	2	7
Science	23	4	-1	-15	-4	-1
University Exploratory Studies Program	-109	-242	-293	-167	-54	-21
<p>*The College of Home Economics and Education and Health & Human Performance were terminated in 2002. The College of Health and Human Sciences (HHS) and the College of Education were established in 2002. The numbers in 2002 - 2006 reflect the numbers gained by HHS.</p> <p>**The Pharmacy numbers reflect the transition from a Pre-Pharmacy major housed in the College of Pharmacy to General Science major housed in the College of Science. The few students in the 2001 cohort mainly reflect this transition and are not reflection of the retention in the College of Pharmacy.</p>						

Source: Office of Institutional Research, (3/21/2008).

Details on the re-distribution of enrollment for continuing students are provided in Figures 4-9.



Source: Office of Institutional Research, (3/21/2008).



Source: Office of Institutional Research, (3/21/2008).

Tables 4-9 contain retention and graduation data for each college from Fall 2001 to Fall 2007 using the Fall 2001 cohort. The shaded columns in the first table on each page denote the college that students migrated to by college. For example, in Table 4, 23 Agricultural Sciences students left OSU after their first year. Of those who stayed at OSU, 119 continued in Agricultural Sciences, 2 transferred to Business, 2 to Forestry, 5 to Health and Human Sciences, 3 to Liberal Arts, 7 to Science, and 1 to UESP. Thus, Agricultural Sciences had 12.3% of their cohort migrate to other OSU colleges with 73.5% of the cohort remaining in Agricultural Sciences. The overall retention rate at OSU for this cohort of Agricultural Sciences students was 85.8%.

The second table on each page contains the net gain or loss by college for the freshman cohort. Again, for Agricultural Sciences, 4 were gained from Engineering, 1 was gained from Science, and 5 from UESP. Agricultural Sciences lost 2 students to Forestry, 4 to Health and Human Sciences and 3 to Liberal Arts. This was a total net gain of 1 student.

Over the course of this study, Liberal Arts consistently gained the most students from other colleges. Forestry and Health and Human Sciences (HEC, and HHP) also tended to consistently receive students from other colleges. UESP consistently transferred more students to other colleges; this was expected given the purpose of UESP. With UESP omitted, the Colleges of Engineering tended to have the most students transferred to other OSU colleges over the course of the study.

The graduation results begin in Table 6, Fall 2001-Fall 2004. For example, after three years Agricultural Sciences had 7 students from the Agricultural Sciences cohort graduate, making a three-year graduation rate of 4.3%. After four years (Table 7) those numbers increased to 70 students graduating for a 43.2% graduation rate; however, 11 of the students had graduated from another OSU college and 59 had graduated from Agricultural Sciences. For the fifth year (Table 8), graduation numbers for the Agricultural Sciences cohort, 107 students graduated; however, only 82 students graduated from Agricultural Sciences. The other 25 students had graduated from other OSU colleges.

The sixth year (Table 9) graduation rate for Agricultural Sciences was 73.5% with a total of 86 students from the Agricultural Sciences cohort graduating in Agricultural Sciences and 33 graduating from other OSU colleges. Overall, the fourth year graduation data (Table 7) suggested that of those students in the cohort who graduated in four years about 37.6% were graduating from colleges other than the one in which they had originally enrolled. This number jumps to 39% after five years (Table 8) and to 39.8% after six years (Table 9).

About 40% of the students who graduated from OSU after six years had transferred to an OSU college that was different from the college in which they had initially enrolled. The implications of this information in terms of advising and helping students to transition from college to college seem particularly appropriate.

**Table 4: Fall 2001 First Time, Full Time, Degree Seeking Undergraduate Student Cohort
Migration Study (Fall 2001 - Fall 2002)**

COLLEGE	Cohort Fall 2001	Grad.	Grad. Rate	Attr.	Attr. Rate	College Migration Pattern										Cont. Rate		Retention Rate
						AG	BUS	ENGR	FOR	HHS	LA	PHARM	SCI	UESP	Subtotal	Trans.*	College**	
Agricultural Sciences	162	0	0%	23	14.2%	119	2	0	2	5	3	0	7	1	139	12.3%	73.5%	85.8%
Business	454	0	0%	93	20.5%	2	268	4	1	16	18	1	9	42	361	20.5%	59.0%	79.5%
Engineering	736	0	0%	120	16.3%	4	24	497	1	8	18	5	26	33	616	16.2%	67.5%	83.7%
Forestry	29	0	0%	5	17.2%	0	0	1	21	1	0	0	0	1	24	10.3%	72.4%	82.8%
Home Economics and Education	162	0	0%	29	17.9%	0	2	0	0	116	10	0	5	0	133	10.5%	71.6%	82.1%
Health & Human Performance	142	0	0%	35	24.6%	1	3	0	1	89	2	0	8	3	107	75.4%	0.0%	75.4%
Liberal Arts	373	0	0%	82	22.0%	0	7	3	1	12	256	0	8	4	291	9.4%	68.6%	78.0%
Pharmacy***	60	0	0%	13	21.7%	0	2	0	0	2	1	37	2	3	47	16.7%	61.7%	78.3%
Science	463	0	0%	101	21.8%	8	9	7	0	20	20	2	290	6	362	15.6%	62.6%	78.2%
University Exploratory Studies Program	537	0	0%	139	25.9%	6	40	12	1	63	50	0	30	196	398	37.6%	36.5%	74.1%
TOTAL	3,118	0	0%	640	20.5%	140	357	524	28	332	378	45	385	289	2,478	79.5%		79.5%

* Percentage of students transferred to other colleges from the college they originally enrolled in fall 2001.

** Percentage of students continued in the same college as they originally enrolled in.

***The Pharmacy numbers reflect the transition from a Pre-Pharmacy major housed in the College of Pharmacy to General Science major housed in the College of Science. The few students in the 2001 cohort mainly reflect this transition and are not reflective of the retention in the College of Pharmacy.

**Table 4.1 Fall 2001 First Time, Full Time, Degree Seeking Undergraduate Student Cohort
Net Gain / Loss by College (Fall 2001 - Fall 2002)**

COLLEGE	AG	BUS	ENGR	FOR	HEC-HHS	HPE-HHS	LA	PHARM	SCI	UESP	Total (net Gain/Loss)	Cont. from		Fall 2001 Enrollment	
												original cohort	Percent	for each college	Percent
Agricultural Sciences	0	0	4	-2	-5	1	-3	0	1	5	1	139	5.6%	140	5.6%
Business	0	0	20	-1	-14	3	-11	1	0	-2	-4	361	14.6%	357	14.4%
Engineering	-4	-20	0	0	-8	0	-15	-5	-19	-21	-92	616	24.9%	524	21.1%
Forestry	2	1	0	0	-1	1	1	0	0	0	4	24	1.0%	28	1.1%
Home Economics and Education	5	14	8	1	0	89	2	2	15	63	199	133	5.4%	332	13.4%
Health & Human Performance	-1	-3	0	-1	-89	0	-2	0	-8	-3	-107	107	4.3%	0	0.0%
Liberal Arts	3	11	15	-1	-2	2	0	1	12	46	87	291	11.7%	378	15.3%
Pharmacy	0	-1	5	0	-2	0	-1	0	0	-3	-2	47	1.9%	45	1.8%
Science	-1	0	19	0	-15	8	-12	0	0	24	23	362	14.6%	385	15.5%
University Exploratory Studies Program	-5	2	21	0	-63	3	-46	3	-24	0	-109	398	16.1%	289	11.7%
Total											0	2,478	100%	2,478	100%

**Table 5: Fall 2001 First Time, Full Time, Degree Seeking Undergraduate Student Cohort
Migration Study (Fall 2001 - Fall 2003)**

COLLEGE	Cohort 2001	Grad. Total	Same college*	Other college**	Grad. Rate	Attr.	Attr. Rate	College Migration Pattern										Cont. Rate		Retention Rate
								AG	BUS	ENGR	FOR	HHS	LA	PHARM	SCI	UESP	Subtotal	Trans.	College	
Agricultural Sciences	162	1	1	0	0.6%	35	21.6%	93	3	1	1	12	9	0	7	0	126	20.4%	57.4%	77.8%
Business	454	1	1	0	0.2%	126	27.8%	3	200	5	2	26	50	2	8	31	327	28.0%	44.1%	72.0%
Engineering***	736	2	1	1	0.3%	175	23.8%	6	40	397	3	13	47	2	37	14	559	22.0%	53.9%	76.0%
Forestry	29	0	0	0	0.0%	8	27.6%	0	0	1	17	1	0	1	1	0	21	13.8%	58.6%	72.4%
Home Economics and Education	162	0	0	0	0.0%	43	26.5%	0	0	0	1	107	10	0	0	1	119	7.4%	66.0%	73.5%
Health & Human Performance	142	0	0	0	0.0%	50	35.2%	1	2	3	1	71	4	0	7	3	92	64.8%	0.0%	64.8%
Liberal Arts	373	1	1	0	0.3%	130	34.9%	2	10	2	1	26	191	0	8	2	242	13.7%	51.2%	64.9%
Pharmacy	60	1	0	1	1.7%	15	25.0%	2	1	0	0	4	2	25	6	4	44	31.7%	41.7%	73.3%
Science	463	0	0	0	0.0%	166	35.9%	5	16	8	1	37	30	2	191	7	297	22.9%	41.3%	64.1%
University Exploratory Studies Program	537	0	0	0	0.0%	187	34.8%	13	63	14	3	93	82	0	36	46	350	56.6%	8.6%	65.2%
TOTAL	3,118	6	4	2	0.2%	935	30.0%	125	335	431	30	390	425	32	301	108	2,177		69.8%	69.8%

* Number of students graduated from the colleges same as that they enrolled originally in Fall 2001.

** Number of students transferred to other colleges from their originally enrolled cohort college and graduated from the colleges they've transferred to.

*** Pre-Engineering students graduated from the College of Engineering are counted as "Graduated from same college."

**Table 5.1: Fall 2001 First Time, Full Time, Degree Seeking Undergraduate Student Cohort
Net Gain / Loss by College (Fall 2001- Fall 2003)**

COLLEGE	AG	BUS	ENGR	FOR	HEC-HHS	HPE-HHS	LA	PHARM	SCI	UESP	Total (net Gain/Loss)	Cont. from		Fall 2002 Enrollment	
												original cohort	Percent	for each college	Percent
Agricultural Sciences	0	0	5	-1	-12	1	-7	2	-2	13	-1	126	5.8%	125	5.7%
Business	0	0	35	-2	-26	2	-40	-1	8	32	8	327	15.0%	335	15.4%
Engineering	-5	-35	0	-2	-13	3	-45	-2	-29	0	-128	559	25.7%	431	19.8%
Forestry	1	2	2	0	0	1	1	-1	0	3	9	21	1.0%	30	1.4%
Home Economics and Education	12	26	13	0	0	71	16	4	37	92	271	119	5.5%	390	17.9%
Health & Human Performance	-1	-2	-3	-1	-71	0	-4	0	-7	-3	-92	92	4.2%	0	0.0%
Liberal Arts	7	40	45	-1	-16	4	0	2	22	80	183	242	11.1%	425	19.5%
Pharmacy	-2	1	2	1	-4	0	-2	0	-4	-4	-12	44	2.0%	32	1.5%
Science	2	-8	29	0	-37	7	-22	4	0	29	4	297	13.6%	301	13.8%
University Exploratory Studies Program	-13	-32	0	-3	-92	3	-80	4	-29	0	-242	350	16.1%	108	5.0%
Total											0	2,177	100%	2,177	100%

Table 6: Fall 2001 First Time, Full Time, Degree Seeking Undergraduate Student Cohort Migration Study (Fall 2001 - Fall 2004)

COLLEGE	Cohort Fall 2001	Grad. Total	Same college*	Other college**	Grad. Rate	Attr.	Attr. Rate	College Migration Pattern										Subtotal	Cont. Rate		Retention Rate
								AG	BUS	ENGR	FOR	HHS	LA	PHARM	SCI	UESP	Trans.		College		
Agricultural Sciences	162	7	5	2	4.3%	43	26.5%	83	3	1	2	10	8	0	5	0	112	17.9%	51.2%	69.1%	
Business	454	11	9	2	2.4%	144	31.7%	4	188	5	1	25	56	0	9	11	299	24.4%	41.4%	65.9%	
Engineering***	736	13	7	6	1.8%	184	25.0%	10	47	369	4	16	54	0	34	5	539	23.1%	50.1%	73.2%	
Forestry	29	0	0	0	0.0%	10	34.5%	0	0	0	15	0	2	0	2	0	19	13.8%	51.7%	65.5%	
Home Economics and Education	162	8	7	1	4.9%	53	32.7%	0	0	0	1	89	11	0	0	0	101	7.4%	54.9%	62.3%	
Health & Human Performance	142	3	3	0	2.1%	57	40.1%	1	4	2	1	62	8	0	3	1	82	57.7%	0.0%	57.7%	
Liberal Arts	373	20	20	0	5.4%	138	37.0%	1	10	1	2	26	168	0	7	0	215	12.6%	45.0%	57.6%	
Pharmacy	60	4	4	0	6.7%	23	38.3%	3	1	0	0	8	1	0	20	0	33	55.0%	0.0%	55.0%	
Science	463	11	11	0	2.4%	181	39.1%	8	14	9	3	47	27	0	161	2	271	23.8%	34.8%	58.5%	
University Exploratory Studies Program	537	3	2	1	0.6%	207	38.5%	13	67	12	2	96	93	0	29	15	327	58.1%	2.8%	60.9%	
TOTAL	3,118	80	68	12	2.6%	1040	33.4%	123	334	399	31	379	428	0	270	34	1,998	64.1%	64.1%	64.1%	

* Number of students graduated from the colleges same as that they enrolled originally in Fall 2001.

** Number of students transferred to other colleges from their originally enrolled cohort college and graduated from the colleges they've transferred to.

*** Pre-Engineering students graduated from the College of Engineering are counted as "Graduated from same college."

Table 6.1: Fall 2001 First Time, Full Time, Degree Seeking Undergraduate Student Cohort Net Gain / Loss by College (Fall 2001 - Fall 2004)

COLLEGE	AG	BUS	ENGR	FOR	HEC-HHS	HPE-HHS	LA	PHARM	SCI	UESP	Total (net gain/loss)	Cont. from		Fall 2004 Enrollment	
												original cohort	%	for each college	Percent
Agricultural Sciences	0	1	9	-2	-10	1	-7	3	3	13	11	112	5.6%	123	6.2%
Business	-1	0	42	-1	-25	4	-46	1	5	56	35	299	15.0%	334	16.7%
Engineering	-9	-42	0	-4	-16	2	-53	0	-25	7	-140	539	27.0%	399	20.0%
Forestry	2	1	4	0	1	1	0	0	1	2	12	19	1.0%	31	1.6%
Home Economics and Education	10	25	16	-1	0	62	15	8	47	96	278	101	5.1%	379	19.0%
Health & Human Performance	-1	-4	-2	-1	-62	0	-8	0	-3	-1	-82	82	4.1%	0	0.0%
Liberal Arts	7	46	53	0	-15	8	0	1	20	93	213	215	10.8%	428	21.4%
Pharmacy	-3	-1	0	0	-8	0	-1	0	-20	0	-33	33	1.7%	0	0.0%
Science	-3	-5	25	-1	-47	3	-20	20	0	27	-1	271	13.6%	270	13.5%
University Exploratory Studies Program	-13	-56	-7	-2	-96	1	-93	0	-27	0	-293	327	16.4%	34	1.7%
Total											0	1,998	100%	1,998	100%

**Table 7: Fall 2001 First Time, Full Time, Degree Seeking Undergraduate Student Cohort
Migration Study (Fall 2001 - Fall 2005)**

COLLEGE	Cohort Fall 2001	Grad. Total	Same college	Other college	Grad. Rate	Attr. Rate	College Migration Pattern											Cont. Rate		Retention Rate	
							AG	BUS	ED	ENGR	FOR	HHS	LA	PHARIV	SCI	UESP	Subtotal	Trans.	College		
Agricultural Sciences	162	70	59	11	43.2%	40	24.7%	29	0	1	1	3	10	5	0	3	0	52	14.2%	17.9%	32.1%
Business	454	158	104	54	34.8%	157	34.6%	1	83	0	3	1	10	35	0	2	4	139	12.3%	18.3%	30.6%
Education	0	0	0	0	0.0%	0	0.0%	0	0	0	0	0	0	0	0	0	0	0			
Engineering	736	167	103	64	22.7%	236	32.1%	9	31	1	225	3	12	33	0	18	1	333	45.1%	0.1%	45.2%
Forestry	29	10	7	3	34.5%	8	27.6%	0	0	0	0	10	0	1	0	0	0	11	37.9%	0.0%	37.9%
Home Economics and Education	162	69	64	5	42.6%	59	36.4%	0	0	2	0	0	27	5	0	0	0	34	21.0%	0.0%	21.0%
Health & Human Performance	142	42	37	5	29.6%	62	43.7%	0	2	0	2	1	27	6	0	0	0	38	26.1%	0.7%	26.8%
Liberal Arts	373	113	93	20	30.3%	146	39.1%	1	6	1	2	1	12	86	0	4	1	114	7.5%	23.1%	30.6%
Pharmacy	60	28	22	6	46.7%	18	30.0%	2	1	0	1	0	2	1	0	7	0	14	23.3%	0.0%	23.3%
Science	463	152	106	46	32.8%	173	37.4%	8	11	0	5	3	25	17	0	68	1	138	15.1%	14.7%	29.8%
University Exploratory Studies Program	537	145	0	145	27.0%	210	39.1%	7	37	0	11	2	45	51	0	21	8	182	32.4%	1.5%	33.9%
TOTAL	3,118	954	595	359	30.6%	1,109	35.6%	57	171	5	250	24	170	240	0	123	15	1055	33.8%		33.8%

**Table 7.1: Fall 2001 First Time, Full Time, Degree Seeking Undergraduate Student Cohort
Net Gain / Loss by College (Fall 2001 - Fall 2005)**

COLLEGE	AG	BUS	ED	ENGR	FOR	HEC-HHS	HPE-HHS	LA	PHARM	SCI	UESP	Total (net gain/loss)	Cont. from original cohort	%	Fall 2005 Enrollment for each college	%
Agricultural Sciences	0	1	-1	8	-3	-10	0	-4	2	5	7	5	52	4.9%	57	5.4%
Business	-1	0	0	28	-1	-10	2	-29	1	9	33	32	139	13.2%	171	16.2%
ED	1	0	0	1	0	2	0	1	0	0	0	5	0	0.0%	5	0.5%
Engineering	-8	-28	-1	0	-3	-12	2	-31	1	-13	10	-83	333	31.6%	250	23.7%
Forestry	3	1	0	3	0	0	1	0	0	3	2	13	11	1.0%	24	2.3%
Home Economics and Education	10	10	-2	12	0	0	27	7	2	25	45	136	34	3.2%	170	16.1%
Health & Human Performance	0	-2	0	-2	-1	-27	0	-6	0	0	0	-38	38	3.6%	0	0.0%
Liberal Arts	4	29	-1	31	0	-7	6	0	1	13	50	126	114	10.8%	240	22.7%
Pharmacy	-2	-1	0	-1	0	-2	0	-1	0	-7	0	-14	14	1.3%	0	0.0%
Science	-5	-9	0	13	-3	-25	0	-13	7	0	20	-15	138	13.1%	123	11.7%
University Exploratory Studies Program	-7	-33	0	-10	-2	-45	0	-50	0	-20	0	-167	182	17.3%	15	1.4%
Total												0	1055	100%	1055	100%

**Table 8: Fall 2001 First Time, Full Time, Degree Seeking Undergraduate Student Cohort
Migration Study (Fall 2001 - Fall 2006)**

COLLEGE	Cohort Fall 2001	Grad. Total	Same college	Other college	Grad. Rate	Attr. Rate	College Migration Pattern														Cont. Rate		Retention Rate
							AG	BUS	ED	ENGR	FOR	HHS	LA	PHARM	SCI	UESP	VM	Subtotal	Trans.	College			
Agricultural Sciences	162	107	82	25	66.0%	30	18.5%	8	0	0	1	0	3	2	0	0	0	11	25	10.5%	4.9%	15.4%	
Business	454	267	182	85	58.8%	157	34.6%	1	11	1	2	1	4	7	1	0	1	1	30	4.2%	2.4%	6.6%	
Education	0	0	0	0	0.0%	0	0.0%	0	0	0	0	0	0	0	0	0	0	0	0				
Engineering	736	421	290	131	57.2%	223	30.3%	9	10	0	49	1	2	10	2	8	1	0	92	12.5%	0.0%	12.5%	
Forestry	29	14	11	3	48.3%	9	31.0%	0	0	0	0	5	0	1	0	0	0	0	6	20.7%	0.0%	20.7%	
Home Economics and Education	162	90	81	9	55.6%	61	37.7%	0	0	0	0	0	9	2	0	0	0	0	11	6.8%	0.0%	6.8%	
Health & Human Performance	142	69	56	13	48.6%	62	43.7%	0	0	1	1	0	5	4	0	0	0	0	11	7.7%	0.0%	7.7%	
Liberal Arts	373	197	159	38	52.8%	155	41.6%	0	0	1	1	0	2	15	0	1	1	0	21	1.6%	4.0%	5.6%	
Pharmacy	60	39	29	10	65.0%	0	0.0%	1	2	0	0	0	0	0	17	0	1	0	21	6.7%	28.3%	35.0%	
Science	463	247	152	95	53.3%	178	38.4%	2	3	0	1	1	3	6	1	17	0	4	38	4.5%	3.7%	8.2%	
University Exploratory Studies Program	537	258	0	258	48.0%	220	41.0%	1	12	0	5	1	14	15	2	8	1	0	59	10.8%	0.2%	11.0%	
Veterinary Medicine	0	0	0	0	0.0%	0	0.0%	0	0	0	0	0	0	0	0	0	0	0	0			0.0%	
TOTAL	3,118	1709	1042	667	54.8%	1095	35.1%	22	38	3	60	9	42	62	23	34	5	16	314	10.1%		10.1%	

**Table 8.1: Fall 2001 First Time, Full Time, Degree Seeking Undergraduate Student Cohort
Net Gain / Loss by College (Fall 2001 - Fall 2006)**

COLLEGE	AG	BUS	ED	ENGR	FOR	HEC-HHS	HPE-HHS	LA	PHARM	SCI	UESP	VM	Total (net gain/loss)	Cont. from original cohort	%	Fall 2006 Enrollment number	%
Agricultural Sciences	0	1	0	8	0	-3	0	-2	1	2	1	-11	-3	25	8.0%	22	7.0%
Business	-1	0	-1	8	-1	-4	0	-7	1	3	11	-1	8	30	9.6%	38	12.1%
ED	0	1	0	0	0	0	1	1	0	0	0	0	3	0	0.0%	3	1.0%
Engineering	-8	-8	0	0	-1	-2	1	-9	-2	-7	4	0	-32	92	29.3%	60	19.1%
Forestry	0	1	0	1	0	0	0	-1	0	1	1	0	3	6	1.9%	9	2.9%
Home Economics and Education	3	4	0	2	0	0	5	0	0	3	14	0	31	11	3.5%	42	13.4%
Health & Human Performance	0	0	-1	-1	0	-5	0	-4	0	0	0	0	-11	11	3.5%	0	0.0%
Liberal Arts	2	7	-1	9	1	0	4	0	0	5	14	0	41	21	6.7%	62	19.7%
Pharmacy	-1	-1	0	2	0	0	0	0	0	1	1	0	2	21	6.7%	23	7.3%
Science	-2	-3	0	7	-1	-3	0	-5	-1	0	8	-4	-4	38	12.1%	34	10.8%
University Exploratory Studies Program	-1	-11	0	-4	-1	-14	0	-14	-1	-8	0	0	-54	59	18.8%	5	1.6%
Veterinary Medicine	11	1	0	0	0	0	0	0	0	4	0	0	16	0	0.0%	16	5.1%
Total													0	314	100%	314	100%

**Table 9: Fall 2001 First Time, Full Time, Degree Seeking Undergraduate Student Cohort
Migration Study (Fall 2001 - Fall 2007)**

COLLEGE	Cohort Fall 2001	Grad. Total	Same college	Other college	Grad. Rate	Attr. Rate	Attr. Rate	College Migration Pattern												Cont. Rate		Retention Rate
								AG	BUS	ED	ENGR	FOR	HHS	LA	PHARM	SCI	UESP	VM	Subtotal	Trans.	College	
Agricultural Sciences	162	119	86	33	73.5%	30	18.5%	1	0	0	0	0	0	1	0	0	0	11	13	7.4%	0.6%	8.0%
Business	454	285	193	92	62.8%	159	35.0%	1	4	1	0	0	2	0	1	0	0	1	10	1.3%	0.9%	2.2%
Education	0	0	0	0	0.0%	0	0.0%	0	0	0	0	0	0	0	0	0	0	0	0			0.0%
Engineering	736	486	333	153	66.0%	215	29.2%	4	4	0	10	0	0	9	3	5	0	0	35	3.4%	1.4%	4.8%
Forestry	29	20	16	4	69.0%	9	31.0%	0	0	0	0	0	0	0	0	0	0	0	0	0.0%	0.0%	0.0%
Home Economics and Education	162	99	89	10	61.1%	59	36.4%	0	0	1	0	0	2	1	0	0	0	0	4	1.2%	1.2%	2.5%
Health & Human Performance	142	76	60	16	53.5%	63	44.4%	0	0	1	0	0	1	1	0	0	0	0	3	1.4%	0.7%	2.1%
Liberal Arts	373	210	171	39	56.3%	148	39.7%	1	0	1	1	0	0	9	0	1	2	0	15	1.6%	2.4%	4.0%
Pharmacy	60	41	30	11	68.3%	5	8.3%	0	0	0	0	0	0	0	14	0	0	0	14	0.0%	23.3%	23.3%
Science	463	268	164	104	57.9%	181	39.1%	0	1	0	0	0	2	2	1	4	0	4	14	2.2%	0.9%	3.0%
University Exploratory Studies Program	537	294	0	294	54.7%	220	41.0%	0	2	0	1	0	7	8	2	3	0	0	23	4.3%	0.0%	4.3%
Veterinary Medicine	0	0	0	0	0.0%	0	0.0%	0	0	0	0	0	0	0	0	0	0	0	0			0.0%
TOTAL	3,118	1898	1142	756	60.9%	1089	34.9%	7	11	4	12	0	14	31	21	13	2	16	131	4.2%		4.2%

**Table 9.1: Fall 2001 First Time, Full Time, Degree Seeking Undergraduate Student Cohort
Net Gain / Loss by College (Fall 2001 - Fall 2007)**

COLLEGE	AG	BUS	ED	ENGR	FOR	HEC-HHS	HPE-HHS	LA	PHARM	SCI	UESP	VM	Total (net gain/loss)	Cont. from		Fall 2007 Enrollment	
														original cohort	%	number	%
Agricultural Sciences	0	1	0	4	0	0	0	0	0	0	0	-11	-6	13	9.9%	7	5.3%
Business	-1	0	-1	4	0	-2	0	0	-1	1	2	-1	1	10	7.6%	11	8.4%
ED	0	1	0	0	0	1	1	1	0	0	0	0	4	0	0.0%	4	3.1%
Engineering	-4	-4	0	0	0	0	0	-8	-3	-5	1	0	-23	35	26.7%	12	9.2%
Forestry	0	0	0	0	0	0	0	0	0	0	0	0	0	0	0.0%	0	0.0%
Home Economics and Education	0	2	-1	0	0	0	1	-1	0	2	7	0	10	4	3.1%	14	10.7%
Health & Human Performance	0	0	-1	0	0	-1	0	-1	0	0	0	0	-3	3	2.3%	0	0.0%
Liberal Arts	0	0	-1	8	0	1	1	0	0	1	6	0	16	15	11.5%	31	23.7%
Pharmacy	0	1	0	3	0	0	0	0	0	1	2	0	7	14	10.7%	21	16.0%
Science	0	-1	0	5	0	-2	0	-1	-1	0	3	-4	-1	14	10.7%	13	9.9%
University Exploratory Studies Program	0	-2	0	-1	0	-7	0	-6	-2	-3	0	0	-21	23	17.6%	2	1.5%
Veterinary Medicine	11	1	0	0	0	0	0	0	0	4	0	0	16	0	0.0%	16	12.2%
Total													0	131	100%	131	100%