

Migration Study on Fall Term 1999 Cohort

This is a migration study on the cohort of first time, full time (credit hours greater than or equal to 12), and degree seeking undergraduate students enrolled in the Fall Term of 1999. The study provides detailed information on enrollment, graduation, retention, attrition and migration of the cohort class over a 1-year to 6-year time span. With this study, each college can track the migration patterns of their students and determine the graduation, retention, and attrition rates of students in their college cohort from 1999-2005.

There were 2,816 students in the Fall Term 1999 cohort class, enrolled in 10 colleges/programs at the university. Table 1 contains the student graduation, retention, and attrition numbers and percentages for 2003 (4-year), 2004 (5-year) and 2005 (6-year). The data showed that in Fall Term 2005, there were 109 students from the cohort continuing their study in the university. The attrition rate decreased in Fall Term 2005, which indicated that the number of returning students was more than the number of attritions in those years. Figures 1, 2, and 3 depicted the graduation rate, retention rate, and attrition rate by year for the Fall Term 1999 cohort class. The six year graduation rate for Fall Term 1999 cohort was 61.5%. The first year retention rate for the Fall Term 1999 cohort was 78.2%. One year later, 21.8% of the students in the cohort had left OSU.

Table 1: Fall Term 1999 Cohort Graduation, Retention, and Attrition Rates

Fall 1999 Cohort	2003		2004		2005	
	Number	Percentage	Number	Percentage	Number	Percentage
Graduation	882	31.3%	1,565	55.6%	1,733	61.5%
Continuation	968	34.4%	248	8.8%	109	3.9%
Attrition	966	34.3%	1,003	35.6%	974	34.6%
Total	2,816	100.0%	2,816	100.0%	2,816	100.0%

Figure 1: Graduation Rate by Year

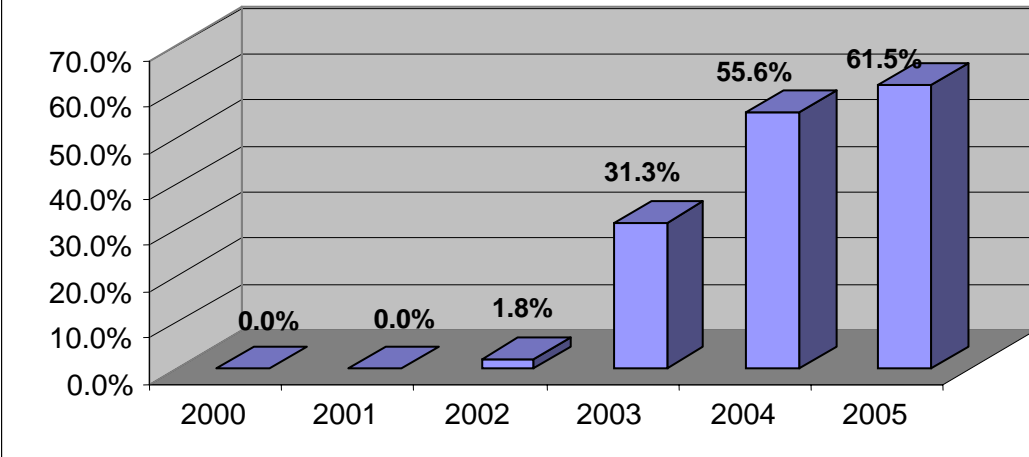


Figure 2: Retention Rate by Year

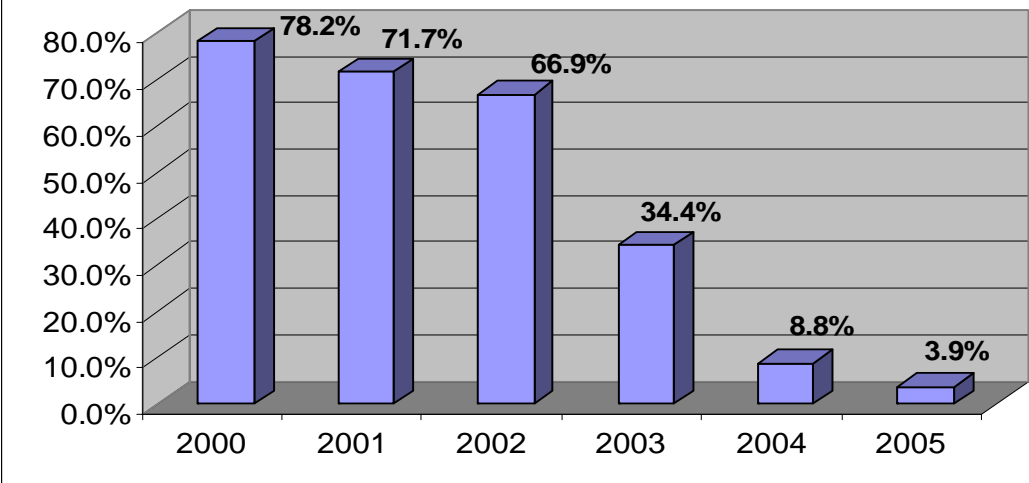
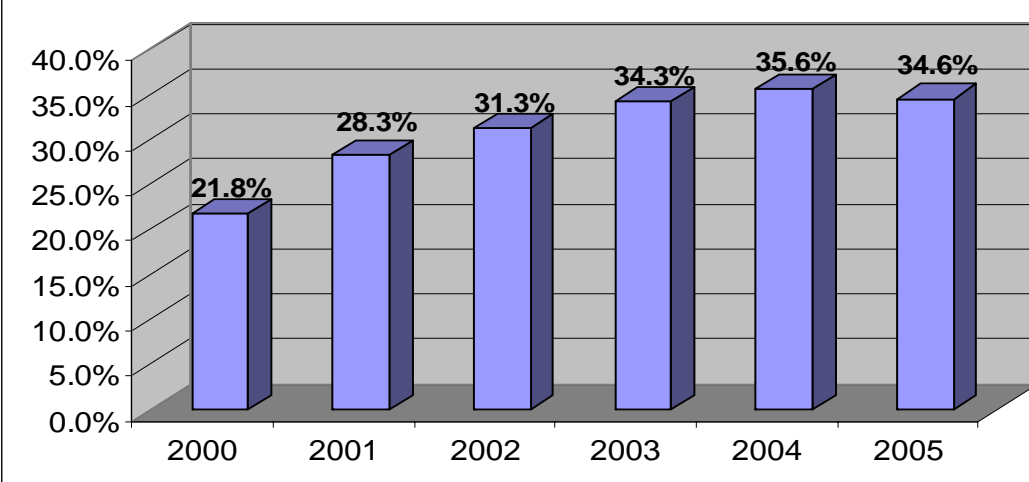


Figure 3: Attrition Rate by Year



For students who graduated from OSU, a rather large proportion graduated from colleges other than the one in which they had initially enrolled in Fall Term 1999. Table 2 lists the numbers of students who graduated from their original colleges and from other colleges transferred to by year. By the end of Summer Term of 2005, 61.5 percent of students (1,733) in the cohort class had graduated; 61.5 percent of them (1,065) graduated from the same colleges in which they originally enrolled in fall 1999 and 38.5% percent (668) graduated from other colleges. Students who stayed in the same college in which they had originally enrolled graduated sooner than others in the cohort who had changed colleges.

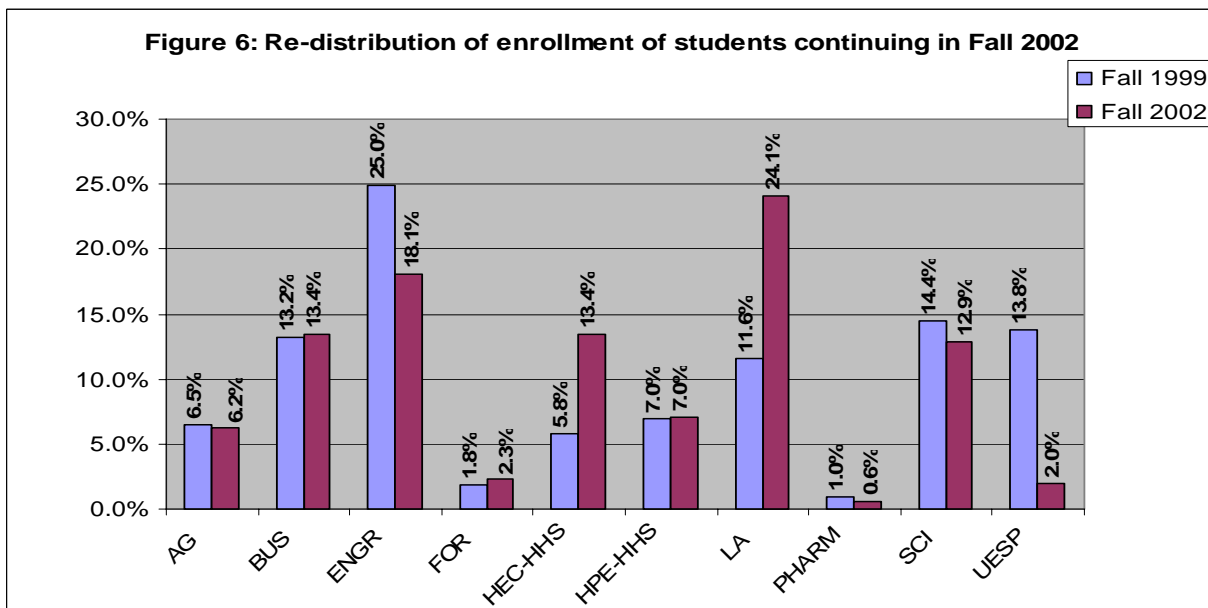
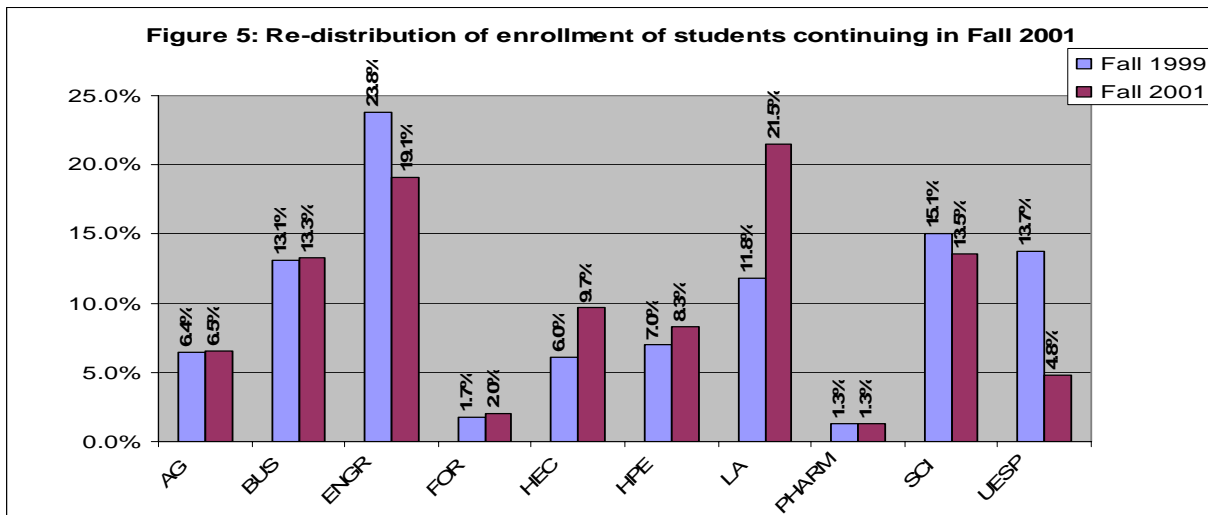
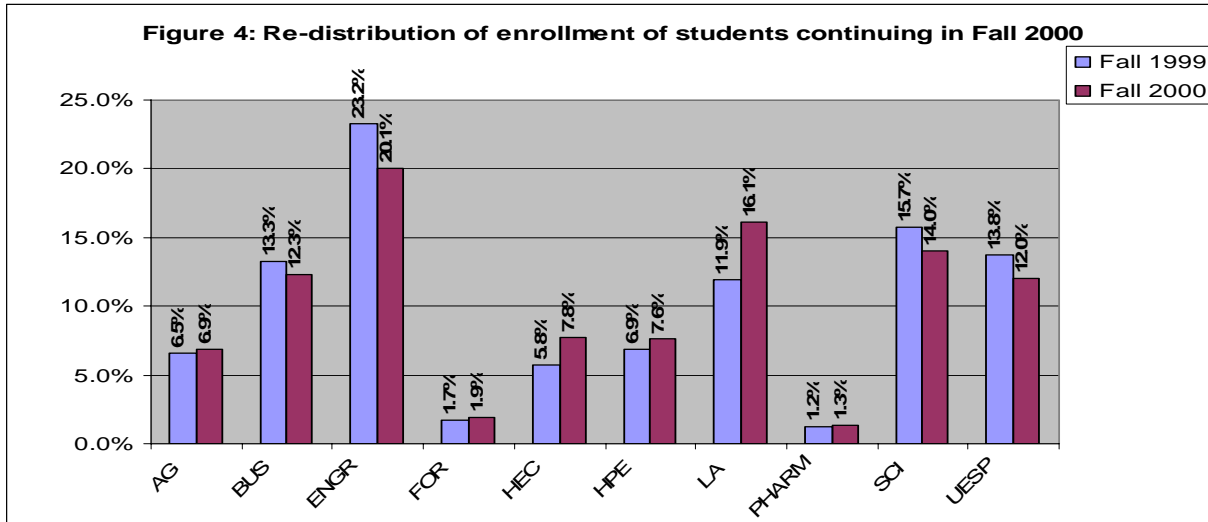
Table 2: Table of Graduations								
Fall 1999 Cohort	2002		2003		2004		2005	
	Number	Percentage	Number	Percentage	Number	Percentage	Number	Percentage
From same college	38	74.5%	543	61.6%	997	63.7%	1,065	61.5%
From other colleges	13	25.5%	339	38.4%	568	36.3%	668	38.5%
Total graduation	51	100.0%	882	100.0%	1,565	100.0%	1,733	100.0%

In the group of continuing students, some continued in the same college, and some transferred to other colleges. Table 3 contains the number of net gain or loss of students by college in each year. The College of Engineering, College of Science, and the University Exploratory Studies Program consistently lost students to other colleges. The College of Forestry, Home Economics & Education, College of Liberal Arts and College of Health & Human Performance gained students from other colleges each year.

Table 3: Net Gain/loss of Students by college/School and by Each Year

	2000	2001	2002	2003	2004	2005
Agricultural Sciences	7	2	-5	4	-4	-3
Business	-20	3	5	19	3	-1
Education	0	0	0	0	0	3
Engineering	-70	-94	-129	-66	-34	-14
Forestry	4	6	9	12	7	5
Home Economics and Education*	44	73	143	67	9	9
Health & Human Performance*	16	27	1	43	8	-1
Liberal Arts	93	195	234	100	50	18
Pharmacy**	2	0	-7	6	-3	-3
Science	-37	-31	-29	-39	1	1
University Exploratory Studies Program	-39	-181	-222	-146	-37	-14
<p>*The College of Home Economics and Education and Health & Human Performance were terminated in 2002. The College of Human and Sciences (HHS) and the College of Education were established in 2002. The numbers in 2002 - 2005 reflect the numbers gained by HHS. **The Pharmacy numbers reflect the transition from a Pre-Pharmacy major housed in the College of Pharmacy to General Science major housed in the College of Science. The few students in the 1999 cohort mainly reflect this transition and are not reflective of the retention in the College of Pharmacy.</p>						

Details on the re-distribution of enrollment for continuing students are provided in Figures 4-9.



Source: Office of Institutional Research, (6/29/2006).

Figure 7: Re-distribution of enrollment of students continuing in Fall 2003

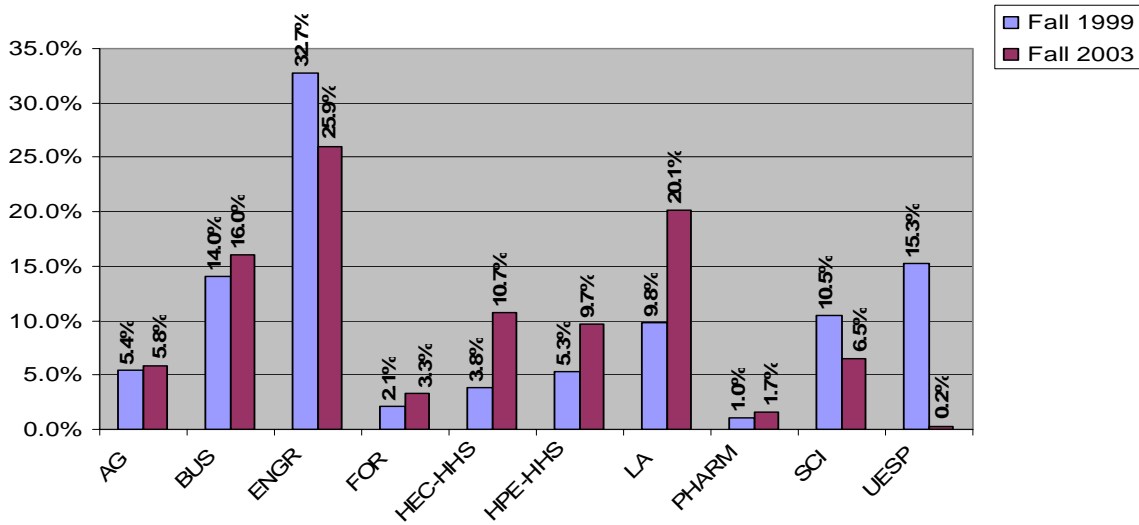


Figure 8: Re-distribution of enrollment of students continuing in Fall 2004

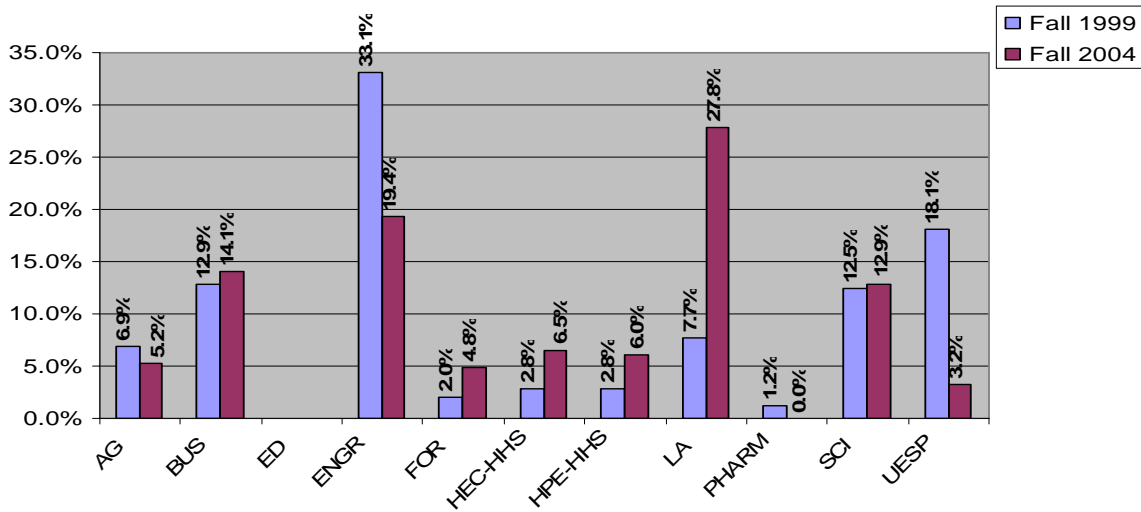
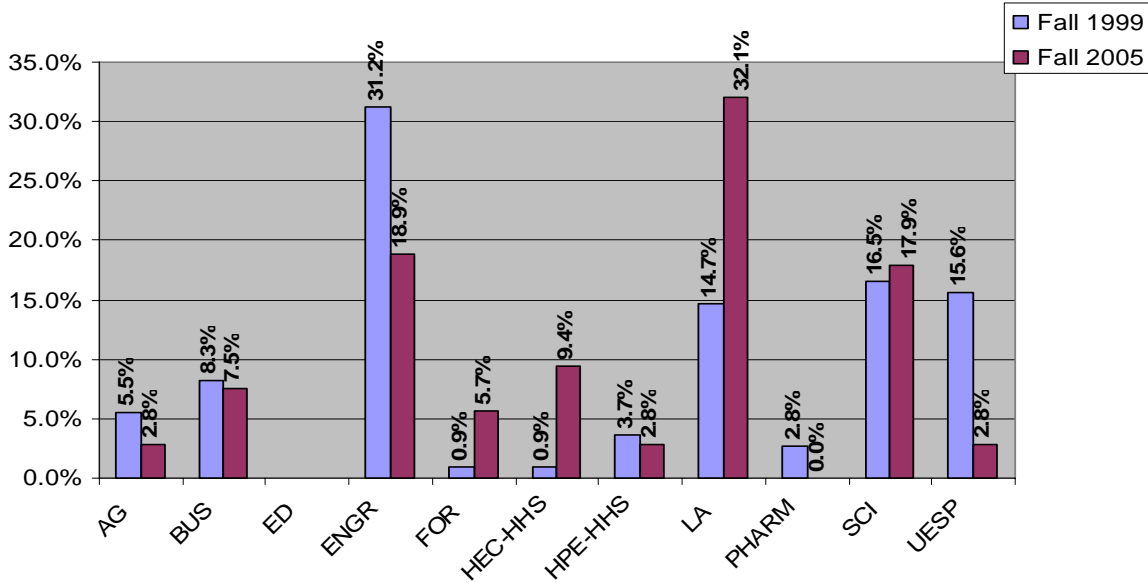


Figure 9: Re-distribution of enrollment of students continuing in Fall 2005



Tables 4-9.1 contain retention and graduation data for each college from Fall 1999 to Fall 2005 using the Fall 1999 cohort. The shaded columns in the first table on each page denoted the college that students migrated to by college. For example in Table 4, 38 Agricultural Sciences students left OSU after their first year. Of those who stayed at OSU, 122 continued in Agricultural Sciences, 2 transferred to Home Economics and Education, 1 to Health and Human Performance, 6 to Liberal Arts, 10 to Science, and 3 to UESP. Thus, Agricultural Sciences had 12.1% of their cohort migrate to other OSU colleges with 67.0% of the cohort remaining in Agricultural Sciences. The overall retention rate at OSU for this cohort of Agricultural Sciences students was 79.1%.

The second table on each page contains the net gain or loss by college for the freshman cohort. Again, for Agricultural Sciences, 2 were gained from Business, 6 were gained from Engineering, 1 from Forestry, and 6 from UESP. Agricultural Sciences lost 2 students to Home Economics and Education, 1 to Health & Human Performance, 4 to Liberal Arts and 1 to Science. This was a total net gain of 7 students.

Over the course of this study, Liberal Arts consistently gained the most students from other colleges. Forestry, HEC, and HHP, also tended to consistently receive students from other colleges. UESP consistently transferred more students to other colleges; this was expected given the purpose of UESP. With UESP omitted, the Colleges of Science and Engineering tended to have the most students transfer to other OSU colleges over the course of the study.

The graduation results begin in Table 6, Fall 1999-Fall 2002. For example after three years Agricultural Sciences had 5 students from the Agricultural Sciences cohort graduate, making a three-year graduation rate of 2.7%. After four years (Table 7) those numbers increased to 68 students graduating for a 37.4% graduation rate; however, 12 of the students had graduated from another OSU college and 56 had graduated from Agricultural Sciences. For the fifth year (Table 8) graduation numbers for the Agricultural Sciences cohort, 101 students graduated; however, only 78 students were still in Agricultural Sciences. The other 23 students had graduated from other OSU colleges. The sixth year (Table 9) graduation rate for Agricultural Sciences was 62.6% with a total of 84 students from the Agricultural Sciences cohort graduating in Agricultural Sciences and 30 graduating from another OSU college.

Overall, the fourth year graduation data (Table 7) suggested that of those students in the cohort who graduated in four years about 26% were graduating from colleges other than the one in which they had originally enrolled. This number jumps to 36% after five years and to 39% after six years.

Nearly 40% of the students who graduated from OSU after six years had transferred to an OSU college that was different from the college in which they had initially enrolled. The implications of this information in terms of advising and helping students to transition from college to college seem particularly appropriate.

**Table 4: Fall 1999 First Time, Full Time, Degree Seeking Undergraduate Student Cohort
Migration Study (Fall 1999 - Fall 2000)**

COLLEGE	Cohort Fall 1999	Grad.	Grad. Rate	Attr.	Attr. Rate	College Migration Pattern											Cont. Rate		Retention Rate
						AG	BUS	ENGR	FOR	HEC	HPE	LA	PHARM	SCI	UESP	Subtotal	Trans.*	College**	
Agricultural Sciences	182	0	0%	38	20.9%	122	0	0	0	2	1	6	0	10	3	144	12.1%	67.0%	79.1%
Business	373	0	0%	81	21.7%	2	196	6	2	11	4	18	0	4	49	292	25.7%	52.5%	78.3%
Engineering	628	0	0%	116	18.5%	6	24	417	5	3	4	20	0	14	19	512	15.1%	66.4%	81.5%
Forestry	47	0	0%	9	19.1%	1	0	0	34	1	0	0	0	2	0	38	8.5%	72.3%	80.9%
Home Economics and Education	166	0	0%	39	23.5%	0	4	0	0	114	1	7	0	0	1	127	7.8%	68.7%	76.5%
Health & Human Performance	192	0	0%	40	20.8%	0	4	1	0	1	128	10	2	4	2	152	12.5%	66.7%	79.2%
Liberal Arts	350	0	0%	88	25.1%	2	6	2	0	15	5	226	0	3	3	262	10.3%	64.6%	74.9%
Pharmacy***	32	0	0%	5	15.6%	0	0	0	0	0	1	1	23	1	1	27	12.5%	71.9%	84.4%
Science	446	0	0%	100	22.4%	9	12	10	0	9	12	22	4	259	9	346	19.5%	58.1%	77.6%
University Exploratory Studies Program	400	0	0%	97	24.3%	9	26	6	1	15	12	45	0	12	177	303	31.5%	44.3%	75.8%
TOTAL	2,816	0	0%	613	21.8%	151	272	442	42	171	168	355	29	309	264	2,203	78.2%		78.2%

* Percentage of students transferred to other colleges from the college they originally enrolled in fall 1999.

** Percentage of students continued in the same college as they originally enrolled in.

***The Pharmacy numbers reflect the transition from a Pre-Pharmacy major housed in the College of Pharmacy to General Science major housed in the College of Science.

The few students in the 1999 cohort mainly reflect this transition and are not reflective of the retention in the College of Pharmacy.

**Table 4.1 Fall 1999 First Time, Full Time, Degree Seeking Undergraduate Student Cohort
Net Gain / Loss by College (Fall 1999 - Fall 2000)**

COLLEGE	AG	BUS	ENGR	FOR	HEC	HPE	LA	PHARM	SCI	UESP	Total (net Gain/Loss)	Cont. from		Fall 2000 Enrollment	
												original cohort	Percent	for each college	Percent
Agricultural Sciences	0	2	6	1	-2	-1	-4	0	-1	6	7	144	6.5%	151	6.9%
Business	-2	0	18	-2	-7	0	-12	0	8	-23	-20	292	13.3%	272	12.3%
Engineering	-6	-18	0	-5	-3	-3	-18	0	-4	-13	-70	512	23.2%	442	20.1%
Forestry	-1	2	5	0	-1	0	0	0	-2	1	4	38	1.7%	42	1.9%
Home Economics and Education	2	7	3	1	0	0	8	0	9	14	44	127	5.8%	171	7.8%
Health & Human Performance	1	0	3	0	0	0	-5	-1	8	10	16	152	6.9%	168	7.6%
Liberal Arts	4	12	18	0	-8	5	0	1	19	42	93	262	11.9%	355	16.1%
Pharmacy	0	0	0	0	0	1	-1	0	3	-1	2	27	1.2%	29	1.3%
Science	1	-8	4	2	-9	-8	-19	-3	0	3	-37	346	15.7%	309	14.0%
University Exploratory Studies Program	-6	23	13	-1	-14	-10	-42	1	-3	0	-39	303	13.8%	264	12.0%
Total											0	2,203	100%	2,203	100%

Table 5: Fall 1999 First Time, Full Time, Degree Seeking Undergraduate Student Cohort Migration Study (Fall 1999 - Fall 2001)

COLLEGE	Cohort Fall 1999	Grad.	Grad. Rate	Attr.	Attr. Rate	College Migration Pattern											Cont. Rate		Retention Rate
						AG	BUS	ENGR	FOR	HEC	HPE	LA	PHARM	SCI	UESP	Subtotal	Trans.	College	
Agricultural Sciences	182	1	0%	51	28.0%	98	2	2	0	3	4	8	0	11	2	130	17.6%	53.8%	71.4%
Business	373	0	0%	108	29.0%	5	150	7	3	17	7	44	0	5	27	265	30.8%	40.2%	71.0%
Engineering	628	0	0%	148	23.6%	9	38	355	7	5	5	32	0	15	14	480	19.9%	56.5%	76.4%
Forestry	47	0	0%	12	25.5%	1	1	2	28	1	0	1	0	1	0	35	14.9%	59.6%	74.5%
Home Economics and Education	166	0	0%	44	26.5%	0	4	0	0	102	4	11	0	0	1	122	12.0%	61.4%	73.5%
Health & Human Performance	192	0	0%	51	26.6%	0	7	1	0	5	105	14	2	7	0	141	18.8%	54.7%	73.4%
Liberal Arts	350	0	0%	111	31.7%	1	7	2	0	22	6	196	0	2	3	239	12.3%	56.0%	68.3%
Pharmacy	32	0	0%	6	18.8%	0	1	0	0	0	1	2	18	3	1	26	25.0%	56.3%	81.3%
Science	446	0	0%	142	31.8%	7	12	8	1	11	16	30	6	210	3	304	21.1%	47.1%	68.2%
University Exploratory Studies Program	400	0	0%	123	30.8%	11	46	9	2	29	20	96	0	19	45	277	58.0%	11.3%	69.3%
TOTAL	2,816	1	0%	796	28.3%	132	268	386	41	195	168	434	26	273	96	2,019	71.7%		71.7%

Table 5.1: Fall 1999 First Time, Full Time, Degree Seeking Undergraduate Student Cohort Net Gain / Loss by College (Fall 1999- Fall 2001)

COLLEGE	AG	BUS	ENGR	FOR	HEC	HPE	LA	PHARM	SCI	UESP	Total (net Gain/Loss)	Cont. from		Fall 2001 Enrollment	
												original cohort	Percent	for each college	Percent
Agricultural Sciences	0	3	7	1	-3	-4	-7	0	-4	9	2	130	6.4%	132	6.5%
Business	-3	0	31	-2	-13	0	-37	1	7	19	3	265	13.1%	268	13.3%
Engineering	-7	-31	0	-5	-5	-4	-30	0	-7	-5	-94	480	23.8%	386	19.1%
Forestry	-1	2	5	0	-1	0	-1	0	0	2	6	35	1.7%	41	2.0%
Home Economics and Education	3	13	5	1	0	1	11	0	11	28	73	122	6.0%	195	9.7%
Health & Human Performance	4	0	4	0	-1	0	-8	-1	9	20	27	141	7.0%	168	8.3%
Liberal Arts	7	37	30	1	-11	8	0	2	28	93	195	239	11.8%	434	21.5%
Pharmacy	0	-1	0	0	0	1	-2	0	3	-1	0	26	1.3%	26	1.3%
Science	4	-7	7	0	-11	-9	-28	-3	0	16	-31	304	15.1%	273	13.5%
University Exploratory Studies Program	-9	-19	5	-2	-28	-20	-93	1	-16	0	-181	277	13.7%	96	4.8%
Total											0	2,019	100%	2,019	100%

**Table 6: Fall 1999 First Time, Full Time, Degree Seeking Undergraduate Student Cohort
Migration Study (Fall 1999 - Fall 2002)**

COLLEGE	Cohort Fall 1999	Grad. Total	Same college*	Other college**	Grad. Rate	Attr. Rate	Attr. Rate	College Migration Pattern										Cont. Rate		Retention Rate
								AG	BUS	ENGR	FOR	HHS	LA	PHARM	SCI	UESP	Subtotal	Trans.	College	
Agricultural Sciences	182	5	5	0	2.7%	55	30.2%	88	5	0	2	6	10	0	11	0	122	18.7%	48.4%	67.0%
Business	373	9	7	2	2.4%	116	31.1%	4	145	7	3	24	49	0	2	14	248	27.6%	38.9%	66.5%
Engineering***	628	3	2	1	0.5%	155	24.7%	9	53	319	8	9	43	0	19	10	470	24.0%	50.8%	74.8%
Forestry	47	1	0	1	2.1%	12	25.5%	3	1	3	23	1	1	0	2	0	34	23.4%	48.9%	72.3%
Home Economics and Education	166	4	4	0	2.4%	53	31.9%	0	5	0	0	92	11	0	1	0	109	10.2%	55.4%	65.7%
Health & Human Performance	192	4	2	2	2.1%	57	29.7%	0	9	1	1	99	14	1	6	0	131	68.2%	0.0%	68.2%
Liberal Arts	350	7	6	1	2.0%	124	35.4%	1	6	2	0	29	179	0	2	0	219	11.4%	51.1%	62.6%
Pharmacy	32	1	1	0	3.1%	13	40.6%	0	0	0	0	1	3	9	4	1	18	28.1%	28.1%	56.3%
Science	446	12	11	1	2.7%	162	36.3%	7	14	6	1	32	36	1	175	0	272	21.7%	39.2%	61.0%
University Exploratory Studies Program	400	5	0	5	1.3%	135	33.8%	11	39	12	6	51	107	0	21	13	260	61.8%	3.3%	65.0%
TOTAL	2,816	51	38	13	1.8%	882	31.3%	123	277	350	44	344	453	11	243	38	1,883	66.9%		66.9%

* Number of students graduated from the colleges same as that they enrolled originally in Fall 1999.

** Number of students transferred to other colleges from their originally enrolled cohort college and graduated from the colleges they've transferred to.

*** Pre-Engineering students graduated from the College of Engineering are counted as "Graduated from same college."

**Table 6.1: Fall 1999 First Time, Full Time, Degree Seeking Undergraduate Student Cohort
Net Gain / Loss by College (Fall 1999 - Fall 2002)**

COLLEGE	AG	BUS	ENGR	FOR	HEC-HHS	HPE-HHS	LA	PHARM	SCI	UESP	Total (net gain/loss)	Cont. from		Fall 2002 Enrollment	
												original cohort	%	for each college	Percent
Agricultural Sciences	0	-1	9	1	-6	-6	-9	0	-4	11	-5	122	6.5%	117	6.2%
Business	1	0	46	-2	-19	-15	-43	0	12	25	5	248	13.2%	253	13.4%
Engineering	-9	-46	0	-5	-9	-8	-41	0	-13	2	-129	470	25.0%	341	18.1%
Forestry	-1	2	5	0	-1	0	-1	0	-1	6	9	34	1.8%	43	2.3%
Home Economics and Education	6	19	9	1	0	7	18	1	31	51	143	109	5.8%	252	13.4%
Health & Human Performance	6	15	8	0	-7	0	-14	-1	-6	0	1	131	7.0%	132	7.0%
Liberal Arts	9	43	41	1	-18	14	0	3	34	107	234	219	11.6%	453	24.1%
Pharmacy	0	0	0	0	-1	1	-3	0	-3	-1	-7	18	1.0%	11	0.6%
Science	4	-12	13	1	-31	6	-34	3	0	21	-29	272	14.4%	243	12.9%
University Exploratory Studies Program	-11	-25	-2	-6	-51	0	-107	1	-21	0	-222	260	13.8%	38	2.0%
Total											0	1,883	100%	1,883	100%

**Table 7: Fall 1999 First Time, Full Time, Degree Seeking Undergraduate Student Cohort
Migration Study (Fall 1999 - Fall 2003)**

COLLEGE	Cohort Fall 1999	Grad. Total	Same college	Other college	Grad. Rate	Attr. Rate	Attr. Rate	College Migration Pattern										Cont. Rate		Retention Rate
								AG	BUS	ENGR	FOR	HHS	LA	PHARM	SCI	UESP	Subtotal	Trans.	College	
Agricultural Sciences	182	68	56	12	37.4%	62	34.1%	33	3	0	2	3	3	0	8	0	52	10.4%	18.1%	28.6%
Business	373	124	77	47	33.2%	113	30.3%	2	75	4	3	6	36	0	1	9	136	16.4%	20.1%	36.5%
Engineering	628	123	79	44	19.6%	188	29.9%	8	36	209	8	6	31	0	14	5	317	17.2%	33.3%	50.5%
Forestry	47	14	13	1	29.8%	13	27.7%	3	1	2	12	0	1	0	1	0	20	17.0%	25.5%	42.6%
Home Economics and Education	166	75	23	52	45.2%	54	32.5%	0	2	0	0	25	10	0	0	0	37	15.7%	15.1%	30.7%
Health & Human Performance	192	73	61	12	38.0%	68	35.4%	0	5	0	0	35	5	1	3	2	51	8.3%	18.2%	26.6%
Liberal Arts	350	120	101	19	34.3%	135	38.6%	1	5	2	0	10	74	0	2	1	95	6.0%	21.1%	27.1%
Pharmacy	32	12	11	1	37.5%	10	31.3%	0	0	0	0	0	4	1	4	1	10	28.1%	3.1%	31.3%
Science	446	170	122	48	38.1%	174	39.0%	4	11	5	0	19	12	0	49	2	102	11.9%	11.0%	22.9%
University Exploratory Studies Program	400	103	0	103	25.8%	149	37.3%	8	23	9	7	25	60	0	9	7	148	35.3%	1.8%	37.0%
TOTAL	2,816	882	543	339	31.3%	966	34.3%	59	161	231	32	129	236	2	91	27	968	34.4%		34.4%

**Table 7.1: Fall 1999 First Time, Full Time, Degree Seeking Undergraduate Student Cohort
Net Gain / Loss by College (Fall 1999 - Fall 2003)**

COLLEGE	AG	BUS	ENGR	FOR	HEC-HHS	HPE-HHS	LA	PHARM	SCI	UESP	Total (net gain/loss)	Cont. from		Fall 2003 Enrollment	
												original cohort	%	for each college	%
Agricultural Sciences	0	-1	8	1	-3	-3	-2	0	-4	8	4	52	5.4%	56	5.8%
Business	1	0	32	-2	-4	-1	-31	0	10	14	19	136	14.0%	155	16.0%
Engineering	-8	-32	0	-6	-6	-6	2	-14	0	4	-66	317	32.7%	251	25.9%
Forestry	-1	2	6	0	0	0	-1	0	-1	7	12	20	2.1%	32	3.3%
Home Economics and Education	3	4	6	0	0	10	0	0	19	25	67	37	3.8%	104	10.7%
Health & Human Performance	3	1	6	0	-10	0	5	-1	16	23	43	51	5.3%	94	9.7%
Liberal Arts	2	31	-2	1	0	-5	0	4	10	59	100	95	9.8%	195	20.1%
Pharmacy	0	0	14	0	0	1	-4	0	-4	-1	6	10	1.0%	16	1.7%
Science	4	-10	0	1	-19	-16	-10	4	0	7	-39	102	10.5%	63	6.5%
University Exploratory Studies Program	-8	-14	-4	-7	-25	-23	-59	1	-7	0	-146	148	15.3%	2	0.2%
Total											0	968	100%	968	100%

**Table 8: Fall 1999 First Time, Full Time, Degree Seeking Undergraduate Student Cohort
Migration Study (Fall 1999 - Fall 2004)**

COLLEGE	Cohort Fall 1999	Grad. Total	Same college	Other college	Grad. Rate	Attr. Rate	Attr. Rate	College Migration Pattern											Cont. Rate		Retention Rate
								AG	BUS	ED	ENGR	FOR	HHS	LA	PHARM	SCI	UESP	Subtotal	Trans.	College	
Agricultural Sciences	182	101	78	23	55.5%	64	35.2%	9	1	0	0	0	3	2	0	2	0	17	4.4%	4.9%	9.3%
Business	373	215	135	80	57.6%	126	33.8%	1	9	0	1	0	1	15	0	1	4	32	6.2%	2.4%	8.6%
Education	0	0	0	0	0.0%	0	0.0%	0	0	0	0	0	0	0	0	0	0	0			
Engineering	628	365	255	110	58.1%	181	28.8%	3	14	0	39	3	1	9	0	10	3	82	13.1%	0.0%	13.1%
Forestry	47	27	20	7	57.4%	15	31.9%	0	1	0	1	3	0	0	0	0	0	5	8.5%	2.1%	10.6%
Home Economics and Education	166	101	88	13	60.8%	58	34.9%	0	0	0	0	0	3	4	0	0	0	7	4.2%	0.0%	4.2%
Health & Human Performance	192	116	94	22	60.4%	69	35.9%	0	1	0	0	0	4	1	0	1	0	7	3.6%	0.0%	3.6%
Liberal Arts	350	186	154	32	53.1%	145	41.4%	0	3	0	1	0	1	12	0	2	0	19	2.0%	3.4%	5.4%
Pharmacy	32	16	14	2	50.0%	13	40.6%	0	0	0	0	0	0	2	0	1	0	3	9.4%	0.0%	9.4%
Science	446	242	159	83	54.3%	173	38.8%	2	2	0	3	0	3	6	0	15	0	31	3.6%	3.4%	7.0%
University Exploratory Studies Program	400	196	0	196	49.0%	159	39.8%	1	5	2	4	6	3	19	0	3	2	45	10.8%	0.5%	11.3%
TOTAL	2,816	1565	997	568	55.6%	1003	35.6%	16	36	2	49	12	19	70	0	35	9	248	8.8%		8.8%

**Table 8.1: Fall 1999 First Time, Full Time, Degree Seeking Undergraduate Student Cohort
Net Gain / Loss by College (Fall 1999 - Fall 2004)**

COLLEGE	AG	BUS	ED	ENGR	FOR	HEC-HHS	HPE-HHS	LA	PHARM	SCI	UESP	Total (net gain/loss)	Cont. from		Fall 2004 Enrollment	
													original cohort	%	number	%
Agricultural Sciences	0	0	0	3	0	-3	-3	-2	0	0	1	-4	17	6.9%	13	5.2%
Business	0	0	0	13	1	-1	0	-12	0	1	1	3	32	12.9%	35	14.1%
ED	0	0	0	0	0	0	0	0	0	0	0	0	0	0.0%	0	0.0%
Engineering	-3	-13	0	0	-2	-1	-1	-8	0	-7	1	-34	82	33.1%	48	19.4%
Forestry	0	-1	0	2	0	0	0	0	0	0	6	7	5	2.0%	12	4.8%
Home Economics and Education	3	1	0	1	0	0	1	-3	0	3	3	9	7	2.8%	16	6.5%
Health & Human Performance	3	0	0	1	0	-1	0	0	0	2	3	8	7	2.8%	15	6.0%
Liberal Arts	2	12	0	8	0	3	0	0	2	4	19	50	19	7.7%	69	27.8%
Pharmacy	0	0	0	0	0	0	0	-2	0	-1	0	-3	3	1.2%	0	0.0%
Science	0	-1	0	7	0	-3	-2	-4	1	0	3	1	31	12.5%	32	12.9%
University Exploratory Studies Program	-1	-1	0	-1	-6	-3	-3	-19	0	-3	0	-37	45	18.1%	8	3.2%
Total												0	248	100%	248	100%

**Table 9: Fall 1999 First Time, Full Time, Degree Seeking Undergraduate Student Cohort
Migration Study (Fall 1999 - Fall 2005)**

COLLEGE	Cohort Fall 1999	Grad. Total	Same college	Other college	Grad. Rate	Attr. Rate	Attr. Rate	College Migration Pattern										Cont. Rate		Retention Rate	
								AG	BUS	ED	ENGR	FOR	HHS	LA	PHARM	SCI	UESP	Subtotal	Trans.		College
Agricultural Sciences	182	114	84	30	62.6%	62	34.1%	1	0	0	0	0	1	3	0	1	0	6	2.7%	0.5%	3.3%
Business	373	237	145	92	63.5%	127	34.0%	0	4	0	0	0	1	2	0	2	0	9	1.3%	1.1%	2.4%
ED	0	0	0	0	0.0%	0	0.0%	0	0	0	0	0	0	0	0	0	0	0			
Engineering	628	420	281	139	66.9%	174	27.7%	1	3	0	18	1	1	5	0	5	0	34	2.5%	2.9%	5.4%
Forestry	47	32	22	10	68.1%	14	29.8%	0	0	0	0	1	0	0	0	0	0	1	0.0%	2.1%	2.1%
Home Economics and Education	166	108	91	17	65.1%	57	34.3%	0	0	0	0	0	0	1	0	0	0	1	0.6%	0.0%	0.6%
Health & Human Performance	192	123	97	26	64.1%	65	33.9%	0	1	0	0	0	1	2	0	0	0	4	1.6%	0.5%	2.1%
Liberal Arts	350	198	161	37	56.6%	136	38.9%	0	0	0	1	0	2	11	0	2	0	16	1.4%	3.1%	4.6%
Pharmacy	32	18	16	2	56.3%	11	34.4%	0	0	0	0	0	0	2	0		1	3	9.4%	0.0%	9.4%
Science	446	256	168	88	57.4%	172	38.6%	2	0	1	2	1	2	3	0	6	1	18	2.7%	1.3%	4.0%
University Exploratory Studies Program	400	227	0	227	56.8%	156	39.0%	0	1	2	0	3	2	5	0	3	1	17	4.0%	0.3%	4.3%
TOTAL	2,816	1733	1065	668	61.5%	974	34.6%	4	9	3	21	6	10	34	0	19	3	109	3.9%		3.9%

**Table 9.1: Fall 1999 First Time, Full Time, Degree Seeking Undergraduate Student Cohort
Net Gain / Loss by College (Fall 1999 - Fall 2005)**

COLLEGE	AG	BUS	ED	ENGR	FOR	HEC-HHS	HPE-HHS	LA	PHARM	SCI	UESP	Total (net gain/loss)	Cont. from		Fall 2005 Enrollment	
													original cohort	%	number	%
Agricultural Sciences	0	0	0	1	0	-1	-1	-3	0	1	0	-3	6	5.5%	3	2.8%
Business	0	0	0	3	0	-1	0	-2	0	-2	1	-1	9	8.3%	8	7.3%
ED	0	0	0	0	0	0	0	0	0	1	2	3	0	0.0%	3	2.8%
Engineering	-1	-3	0	0	-1	-1	-1	-4	0	-3	0	-14	34	31.2%	20	18.3%
Forestry	0	0	0	1	0	0	0	0	0	1	3	5	1	0.9%	6	5.5%
Home Economics and Education	1	1	0	1	0	0	1	1	0	2	2	9	1	0.9%	10	9.2%
Health & Human Performance	1	0	0	1	0	-1	0	-2	0	0	0	-1	4	3.7%	3	2.8%
Liberal Arts	3	2	0	4	0	-1	2	0	2	1	5	18	16	14.7%	34	31.2%
Pharmacy	0	0	0	0	0	0	0	-2	0	0	-1	-3	3	2.8%	0	0.0%
Science	-1	2	-1	3	-1	-2	0	-1	0	0	2	1	18	16.5%	19	17.4%
University Exploratory Studies Program	0	-1	-2	0	-3	-2	0	-5	1	-2	0	-14	17	15.6%	3	2.8%
Total												0	109	100%	109	100%