

Migration Study on Fall Term 1998 Cohort

This is a migration study on the cohort of first time, full time (credit hours greater than or equal to 12), degree seeking undergraduate students enrolled in the Fall Term of 1998. The study provides detailed information on enrollment, graduation, retention, attrition and migration of the cohort class over a 1-year to 6-year time span. With this study, each college can track the migration patterns of their students and determine the graduation, retention, and attrition rates of student in their college cohort from 1998-2004.

There were 2,272 students in the Fall Term 1998 cohort class, enrolled in 10 colleges/programs at the university. Table 1 contains the student graduation, retention, and attrition numbers and percentages for 2002 (4-year), 2003 (5-year) and 2004 (6-year). The data showed that in Fall Term 2004, there were 81 students from the cohort continuing their study in the university. The attrition rate decreased in Fall Term 2004, which indicated that the number of returning students was more than the number of attritions in those years. Figures 1, 2, and 3 depict the graduation rate, retention rate, and attrition rate by year for the Fall Term 1998 cohort class. The six year graduation rate for Fall Term 1998 cohort is 60.4%. The first year retention rate for Fall Term 1998 cohort is 79.0%. One year later, 21% of the students in the cohort had left OSU.

Table 1: Fall Term 1998 Cohort Graduation, Retention, and Attrition Rates

Fall 1998 Cohort	2002		2003		2004	
	Number	Percentage	Number	Percentage	Number	Percentage
Graduation	652	28.7%	1,222	53.8%	1,372	60.4%
Retention	813	35.8%	211	9.3%	81	3.6%
Attrition	807	35.5%	839	36.9%	819	36.0%
Total	2,272	100.0%	2,272	100.0%	2,272	100.0%

Figure 1: Graduation Rate by Year

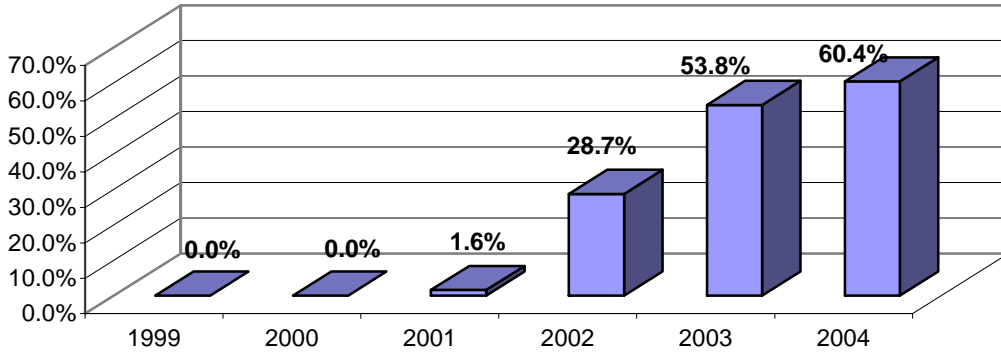


Figure 2: Retention Rate by Year

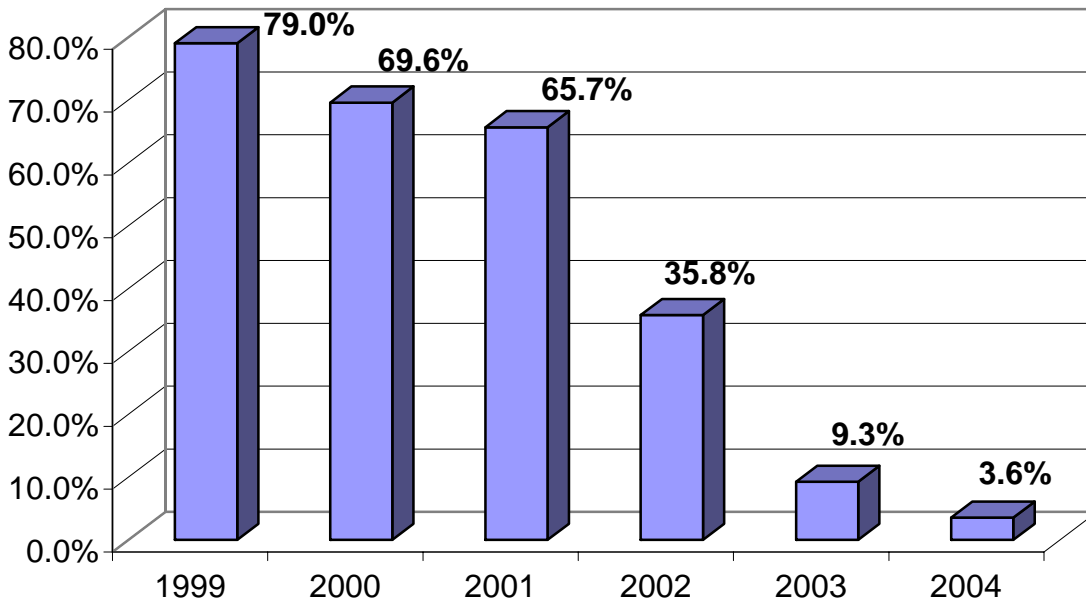
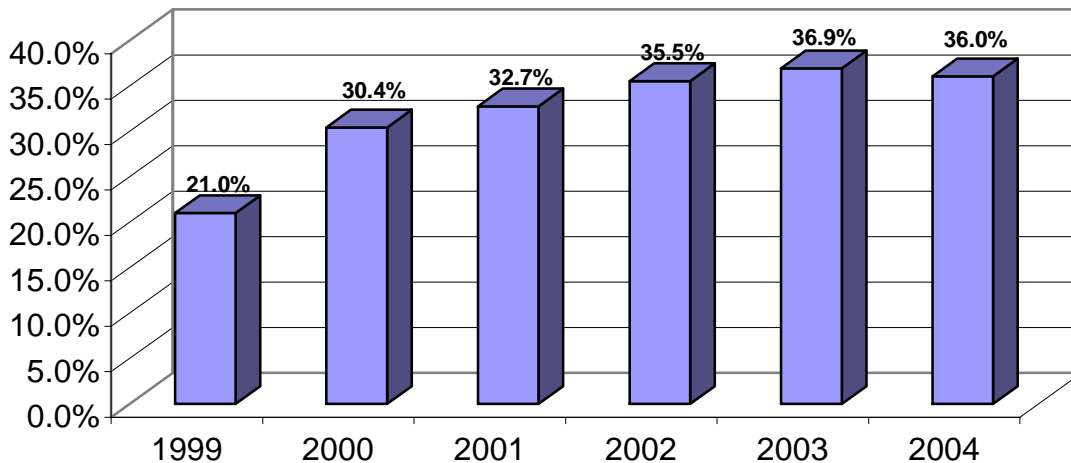


Figure 3: Attrition Rate by Year



For students who graduated from OSU, a rather large proportion graduated from colleges other than the one in which they had initially enrolled in Fall Term 1998. Table 2 lists the numbers of students who graduated from their original colleges and from other colleges transferred to by year. By the end of Summer Term of 2004, 60.4 percent of students (1,372) in the cohort class had graduated; 62.0 percent of them (850) graduated from the same colleges in which they originally enrolled in fall 1998 and 38.0 percent (522) graduated from other colleges. Students who stayed in the same college in which they had originally enrolled graduated sooner than others in the cohort who had changed colleges.

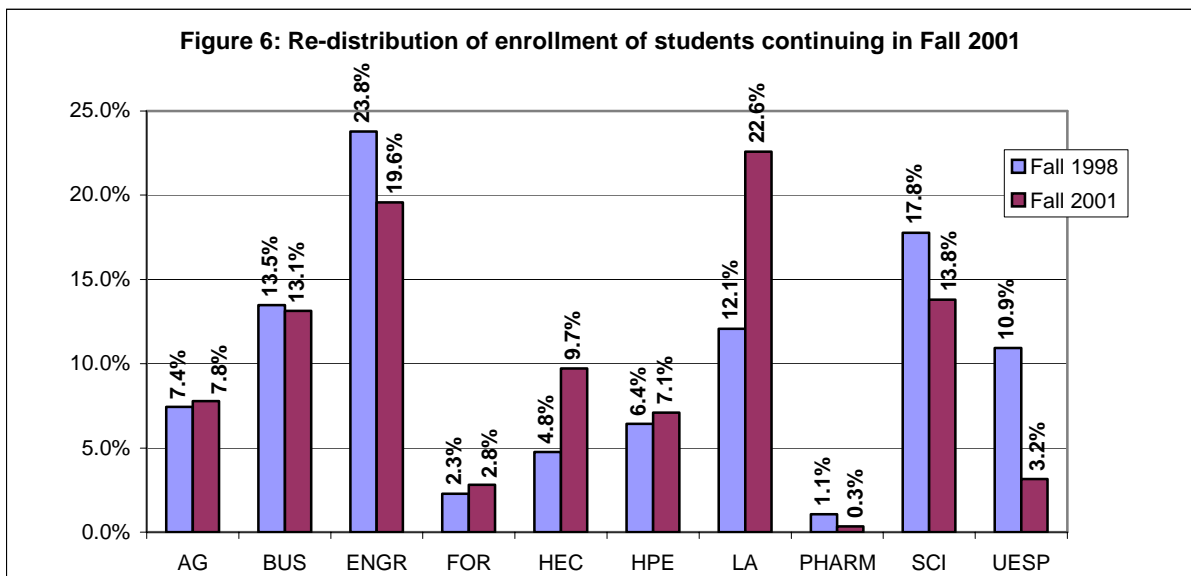
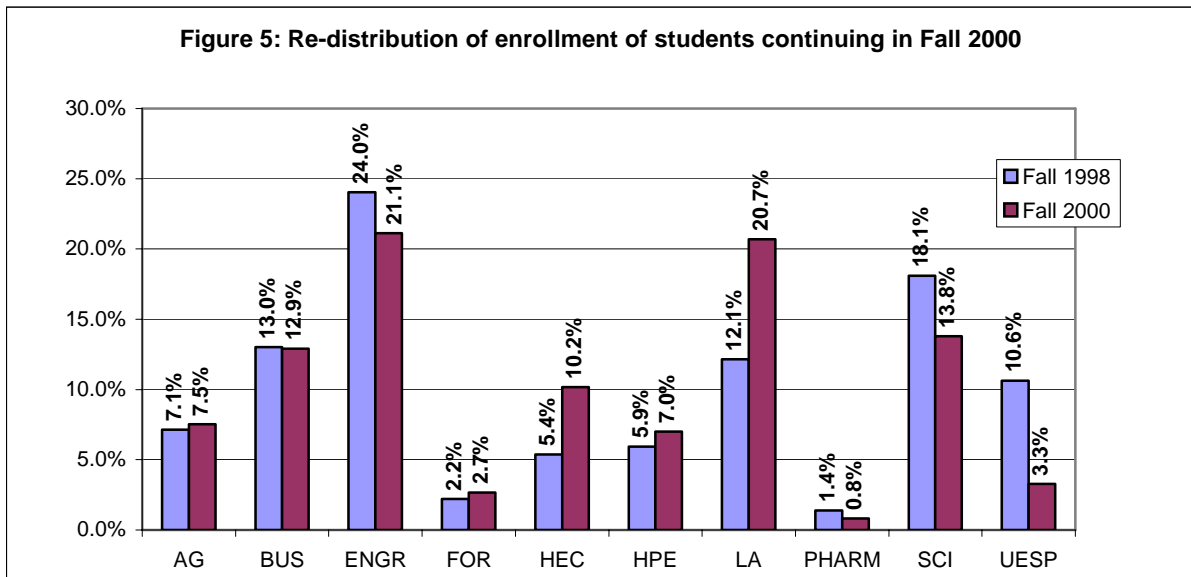
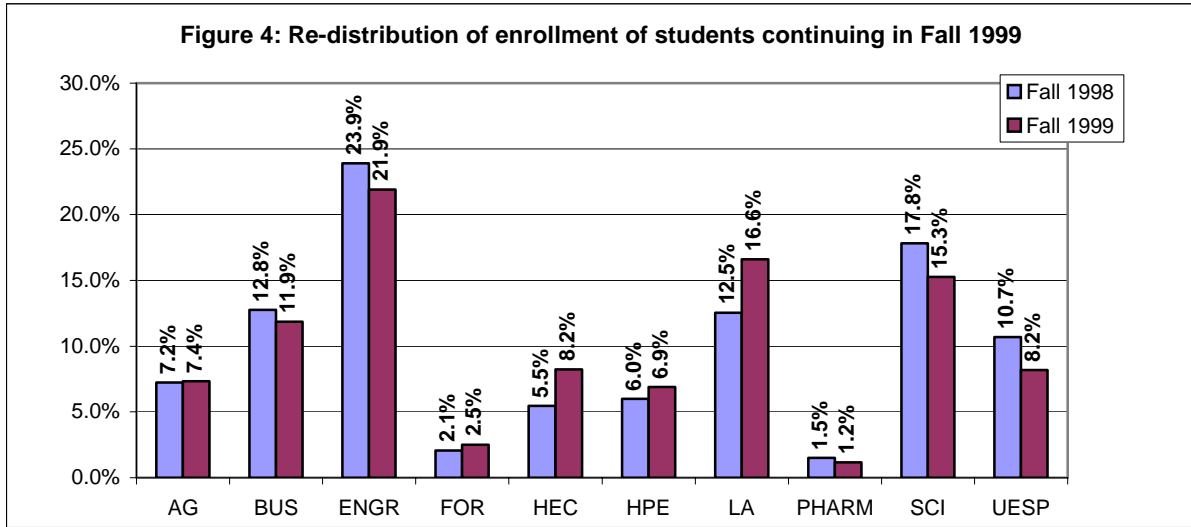
Fall 1998 Cohort	2001		2002		2003		2004	
	Number	Percentage	Number	Percentage	Number	Percentage	Number	Percentage
Graduated								
From same college	31	86.1%	449	68.9%	773	63.3%	850	62.0%
From other colleges	5	13.9%	203	31.1%	449	36.7%	522	38.0%
Total graduation	36	100.0%	652	100.0%	1,222	100.0%	1,372	100.0%

In the group of continuing students, some continued in the same college, and some transferred to other colleges. Table 3 contains the number of net gain or loss of students by college in each year. The enrollment in the College of Business, College of Science, College of Pharmacy and the University Exploratory Studies Program decreased and the enrollment in the College of Agricultural Sciences, Forestry, Home Economics & Education, College of Liberal Arts and College of Health & Human Performance increased.

Table 3: Net Gain/loss of Students by college/School and by Each Year

	1999	2000	2001	2002	2003	2004
Agricultural Sciences	2	6	5	9	0	0
Business	-16	-2	-5	5	-7	-1
Engineering	-36	-46	-63	-64	-34	-15
Forestry	8	7	8	11	2	1
Home Economics and Education	50	76	74	88	9	6
Health & Human Performance	16	17	10	-47	8	-1
Liberal Arts	73	135	157	111	56	29
Pharmacy	-6	-9	-11	-6	-1	0
Science	-46	-68	-59	-37	-8	-7
University Exploratory Studies Program	-45	-116	-116	-70	-25	-12

Details on the re-distribution of enrollment for continuing students are provided in Figures 4-9.



Source: Office of Institutional Research, (11/9/2005).

Figure 7: Re-distribution of enrollment of students continuing in Fall 2002

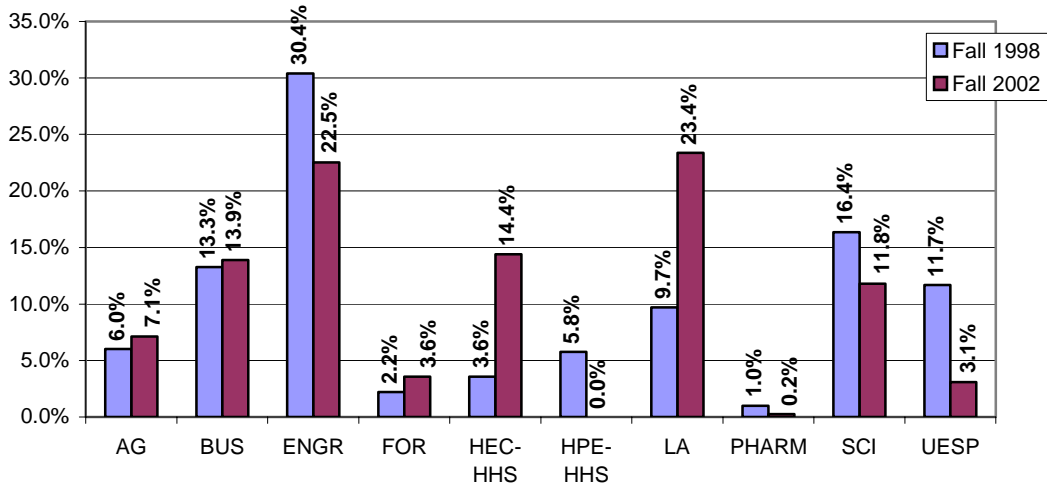


Figure 8: Re-distribution of enrollment of students continuing in Fall 2003

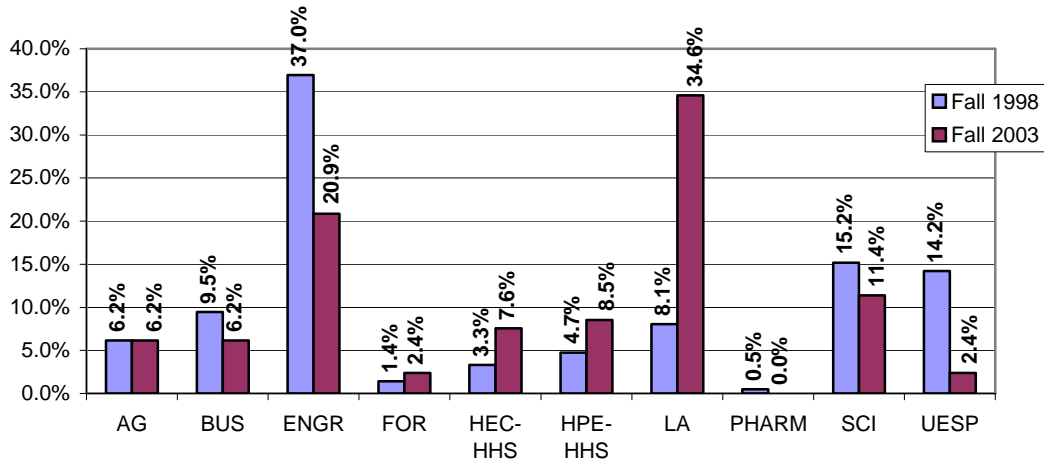
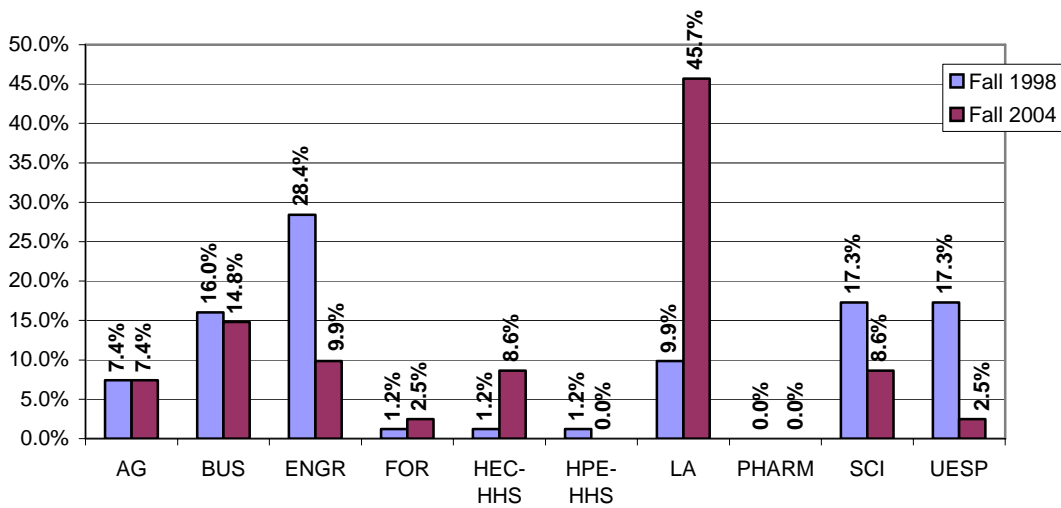


Figure 9: Re-distribution of enrollment of students continuing in Fall 2004



Tables 4-9.1 include retention and graduation data for each college from Fall 1998 to Fall 2004 using the Fall 1998 cohort. The shaded columns in the first table on each page denote the college that students migrated to by college. For example in Table 4, 35 Agricultural Sciences students left OSU after their first year. Of those who stayed at OSU, 114 continued in Agricultural Sciences, 2 transferred to Business, 3 to Forestry, 1 to HEC and HPE, 5 to Liberal Arts, 3 to Science, and 1 to UESP. Thus, Agricultural Sciences had 9.7% of their cohort migrate to other OSU colleges with 69.1% of the cohort remaining in Agricultural Sciences. The overall retention rate at OSU for this cohort of Agricultural Sciences students was 78.8%.

The second table on each page contains the net gain or loss by college for the freshman cohort. Again, for Agricultural Sciences, 3 were gained from Engineering, 1 from Pharmacy, 4 from Science and 3 from UESP. Agricultural Sciences lost 3 students to Forestry, 1 to HEC, 1 to HPE, and 4 to Liberal Arts. This was a Total net gain/loss of 2 students.

Over the course of this study, Liberal Arts consistently gained the most students from other colleges. Forestry, HEC, HHP, and Agricultural Sciences also tended to consistently receive students from other colleges. UESP consistently transferred more students to other colleges; this was expected given the purpose of UESP. With UESP omitted, the Colleges of Science and Engineering tended to have the most students transfer to other OSU colleges over the course of the study.

The graduation results begin in Table 6, Fall 1998-Fall 2001. For example after three years Agricultural Sciences had two students from the Agricultural Sciences cohort graduate, making a three-year graduation rate of 1.2%. After four years (Table 7) those numbers increased to 69 students graduating for a 41.8% graduation rate; however, 9 of the students had graduated from another OSU college and 60 had graduated from Agricultural Sciences. For the fifth year graduation numbers for the Agricultural Sciences cohort, 104 students graduated; however, only 85 students were still in Agricultural Sciences. The other 19 students had graduated from other OSU colleges. The sixth year (Table 9) graduation rate for Agricultural Sciences was 69.7% with a total of 96 students from the Agricultural Sciences cohort graduating in Agricultural Sciences and 19 graduating from another OSU college.

Overall, the fourth year graduation data (Table 7) suggested that of those students in the cohort who graduated in four years about 31% were graduating from colleges other than the one in which they had originally enrolled. This number jumps to 37% after five years and to 38% after six years.

Nearly 40% of the students who graduated from OSU after six years had transferred to an OSU college that was different from the college in which they had initially enrolled. The implications of this information in terms of advising and helping students to transition from college to college seem particularly appropriate.

**Table 4: Fall 1998 First Time, Full Time, Degree Seeking Undergraduate Student Cohort
Migration Study (Fall 1998 - Fall 1999)**

COLLEGE	Cohort Fall 1998	Grad.	Grad. Rate	Attr.	Attr. Rate	College Migration Pattern											Cont. Rate		Retention Rate
						AG	BUS	ENGR	FOR	HEC	HPE	LA	PHARM	SCI	UESP	Subtotal	Trans.*	College**	
Agricultural Sciences	165	0	0%	35	21.2%	114	2	0	3	1	1	5	0	3	1	130	9.7%	69.1%	78.8%
Business	294	0	0%	65	22.1%	2	166	2	2	6	5	20	1	4	21	229	21.4%	56.5%	77.9%
Engineering	518	0	0%	89	17.2%	3	11	363	4	2	4	16	0	12	14	429	12.7%	70.1%	82.8%
Forestry	51	0	0%	14	27.5%	0	1	0	33	0	1	1	0	1	0	37	7.8%	64.7%	72.5%
Home Economics and Education	132	0	0%	34	25.8%	0	0	1	0	90	2	2	1	2	0	98	6.1%	68.2%	74.2%
Health & Human Performance	138	0	0%	30	21.7%	0	5	1	1	6	87	4	0	1	3	108	15.2%	63.0%	78.3%
Liberal Arts	270	0	0%	45	16.7%	1	4	5	0	10	6	195	0	2	2	225	11.1%	72.2%	83.3%
Pharmacy	35	0	0%	8	22.9%	1	1	2	0	0	0	2	16	3	2	27	31.4%	45.7%	77.1%
Science	405	0	0%	85	21.0%	7	7	9	0	14	7	28	1	241	6	320	19.5%	59.5%	79.0%
University Exploratory Studies Program	264	0	0%	72	27.3%	4	16	10	2	19	11	25	2	5	98	192	35.6%	37.1%	72.7%
TOTAL	2,272	0	0%	477	21.0%	132	213	393	45	148	124	298	21	274	147	1,795	79.0%		79.0%

* Percentage of students transferred to other colleges from the college they originally enrolled in fall 1998.

** Percentage of students continued in the same college as they originally enrolled in.

**Table 4.1 Fall 1998 First Time, Full Time, Degree Seeking Undergraduate Student Cohort
Net Gain / Loss by College (Fall 1998 - Fall 1999)**

COLLEGE	AG	BUS	ENGR	FOR	HEC	HPE	LA	PHARM	SCI	UESP	Total (net Gain/Loss)	Cont. from		Fall 1999 Enrollment	
												original cohort	Percent	for each college	Percent
Agricultural Sciences	0	0	3	-3	-1	-1	-4	1	4	3	2	130	7.2%	132	7.4%
Business	0	0	9	-1	-6	0	-16	0	3	-5	-16	229	12.8%	213	11.9%
Engineering	-3	-9	0	-4	-1	-3	-11	2	-3	-4	-36	429	23.9%	393	21.9%
Forestry	3	1	4	0	0	0	-1	0	-1	2	8	37	2.1%	45	2.5%
Home Economics and Education	1	6	1	0	0	4	8	-1	12	19	50	98	5.5%	148	8.2%
Health & Human Performance	1	0	3	0	-4	0	2	0	6	8	16	108	6.0%	124	6.9%
Liberal Arts	4	16	11	1	-8	-2	0	2	26	23	73	225	12.5%	298	16.6%
Pharmacy	-1	0	-2	0	1	0	-2	0	-2	0	-6	27	1.5%	21	1.2%
Science	-4	-3	3	1	-12	-6	-26	2	0	-1	-46	320	17.8%	274	15.3%
University Exploratory Studies Program	-3	5	4	-2	-19	-8	-23	0	1	0	-45	192	10.7%	147	8.2%
Total											0	1,795	100%	1,795	100%

**Table 5: Fall 1998 First Time, Full Time, Degree Seeking Undergraduate Student Cohort
Migration Study (Fall 1998 - Fall 2000)**

COLLEGE	Cohort Fall 1998	Grad.	Grad. Rate	Attr.	Attr. Rate	College Migration Pattern											Cont. Rate		Retention Rate
						AG	BUS	ENGR	FOR	HEC	HPE	LA	PHARM	SCI	UESP	Subtotal	Trans.	College	
Agricultural Sciences	165	0	0%	52	31.5%	95	3	0	4	2	1	5	0	3	0	113	10.9%	57.6%	68.5%
Business	294	0	0%	88	29.9%	4	128	4	1	12	6	31	1	1	18	206	26.5%	43.5%	70.1%
Engineering	518	0	0%	138	26.6%	4	27	292	3	3	6	22	0	17	6	380	17.0%	56.4%	73.4%
Forestry	51	0	0%	16	31.4%	1	1	1	26	1	1	1	0	3	0	35	17.6%	51.0%	68.6%
Home Economics and Education	132	0	0%	47	35.6%	0	1	1	0	68	3	7	1	3	1	85	12.9%	51.5%	64.4%
Health & Human Performance	138	0	0%	44	31.9%	0	5	4	2	6	67	9	0	0	1	94	19.6%	48.6%	68.1%
Liberal Arts	270	0	0%	78	28.9%	2	6	4	1	16	6	155	0	2	0	192	13.7%	57.4%	71.1%
Pharmacy	35	0	0%	13	37.1%	1	1	0	0	2	0	4	9	4	1	22	37.1%	25.7%	62.9%
Science	405	0	0%	119	29.4%	10	6	17	1	22	7	44	0	177	2	286	26.9%	43.7%	70.6%
University Exploratory Studies Program	264	0	0%	96	36.4%	2	26	11	4	29	14	49	2	8	23	168	54.9%	8.7%	63.6%
TOTAL	2,272	0	0%	691	30.4%	119	204	334	42	161	111	327	13	218	52	1,581	69.6%		69.6%

**Table 5.1: Fall 1998 First Time, Full Time, Degree Seeking Undergraduate Student Cohort
Net Gain / Loss by College (Fall 1998- Fall 2000)**

COLLEGE	AG	BUS	ENGR	FOR	HEC	HPE	LA	PHARM	SCI	UESP	Total (net Gain/Loss)	Cont. from		Fall 2000 Enrollment	
												original cohort	Percent	for each college	Percent
Agricultural Sciences	0	1	4	-3	-2	-1	-3	1	7	2	6	113	7.1%	119	7.5%
Business	-1	0	23	0	-11	-1	-25	0	5	8	-2	206	13.0%	204	12.9%
Engineering	-4	-23	0	-2	-2	-2	-18	0	0	5	-46	380	24.0%	334	21.1%
Forestry	3	0	2	0	-1	1	0	0	-2	4	7	35	2.2%	42	2.7%
Home Economics and Education	2	11	2	1	0	3	9	1	19	28	76	85	5.4%	161	10.2%
Health & Human Performance	1	1	2	-1	-3	0	-3	0	7	13	17	94	5.9%	111	7.0%
Liberal Arts	3	25	18	0	-9	3	0	4	42	49	135	192	12.1%	327	20.7%
Pharmacy	-1	0	0	0	-1	0	-4	0	-4	1	-9	22	1.4%	13	0.8%
Science	-7	-5	0	2	-19	-7	-42	4	0	6	-68	286	18.1%	218	13.8%
University Exploratory Studies Program	-2	-8	-5	-4	-28	-13	-49	-1	-6	0	-116	168	10.6%	52	3.3%
Total											0	1,581	100%	1,581	100%

**Table 6: Fall 1998 First Time, Full Time, Degree Seeking Undergraduate Student Cohort
Migration Study (Fall 1998 - Fall 2001)**

COLLEGE	Cohort Fall 1998	Grad. Total	Same college*	Other college**	Grad. Rate	Attr. Rate	Attr. Rate	College Migration Pattern											Cont. Rate		Retention Rate
								AG	BUS	ENGR	FOR	HEC	HPE	LA	PHARM	SCI	UESP	Subtotal	Trans.	College	
Agricultural Sciences	165	2	2	0	1.2%	52	31.5%	87	3	0	2	2	1	10	0	3	3	111	14.5%	52.7%	67.3%
Business	294	3	2	1	1.0%	90	30.6%	5	116	4	1	12	7	38	0	3	15	201	28.9%	39.5%	68.4%
Engineering***	518	10	9	1	1.9%	153	29.5%	6	28	256	4	4	7	18	0	21	11	355	19.1%	49.4%	68.5%
Forestry	51	0	0	0	0.0%	17	33.3%	2	1	1	24	1	0	2	0	3	0	34	19.6%	47.1%	66.7%
Home Economics and Education	132	5	5	0	3.8%	56	42.4%	1	1	1	0	56	2	9	0	1	0	71	11.4%	42.4%	53.8%
Health & Human Performance	138	3	3	0	2.2%	39	28.3%	0	8	3	2	6	62	12	0	1	2	96	24.6%	44.9%	69.6%
Liberal Arts	270	5	5	0	1.9%	85	31.5%	2	4	3	1	15	7	143	0	3	2	180	13.7%	53.0%	66.7%
Pharmacy	35	1	0	1	2.9%	18	51.4%	1	1	0	0	1	0	5	3	5	0	16	37.1%	8.6%	45.7%
Science	405	6	5	1	1.5%	134	33.1%	10	8	15	1	21	7	44	0	156	3	265	26.9%	38.5%	65.4%
University Exploratory Studies Program	264	1	0	1	0.4%	100	37.9%	2	26	9	7	27	13	56	2	10	11	163	57.6%	4.2%	61.7%
TOTAL	2,272	36	31	5	1.6%	744	32.7%	116	196	292	42	145	106	337	5	206	47	1492	65.7%		65.7%

* Number of students graduated from the colleges same as that they enrolled originally in Fall 1998.

** Number of students transferred to other colleges from their originally enrolled cohort college and graduated from the colleges they've transferred to.

*** Pre-Engineering students graduated from the College of Engineering are counted as "Graduated from same college."

**Table 6.1: Fall 1998 First Time, Full Time, Degree Seeking Undergraduate Student Cohort
Net Gain / Loss by College (Fall 1998 - Fall 2001)**

COLLEGE	AG	BUS	ENGR	FOR	HEC	HPE	LA	PHARM	SCI	UESP	Total (net gain/loss)	Cont. from		Fall 2001 Enrollment	
												original cohort	%	for each college	Percent
Agricultural Sciences	0	2	6	0	-1	-1	-8	1	7	-1	5	111	7.4%	116	7.8%
Business	-2	0	24	0	-11	1	-34	1	5	11	-5	201	13.5%	196	13.1%
Engineering	-6	-24	0	-3	-3	-4	-15	0	-6	-2	-63	355	23.8%	292	19.6%
Forestry	0	0	3	0	-1	2	-1	0	-2	7	8	34	2.3%	42	2.8%
Home Economics and Education	1	11	3	1	0	4	6	1	20	27	74	71	4.8%	145	9.7%
Health & Human Performance	1	-1	4	-2	-4	0	-5	0	6	11	10	96	6.4%	106	7.1%
Liberal Arts	8	34	15	1	-6	5	0	5	41	54	157	180	12.1%	337	22.6%
Pharmacy	-1	-1	0	0	-1	0	-5	0	-5	2	-11	16	1.1%	5	0.3%
Science	-7	-5	6	2	-20	-6	-41	5	0	7	-59	265	17.8%	206	13.8%
University Exploratory Studies Program	1	-11	2	-7	-27	-11	-54	-2	-7	0	-116	163	10.9%	47	3.2%
Total											0	1,492	100%	1,492	100%

Source: Office of Institutional Research, (11/9/2005).

**Table 7: Fall 1998 First Time, Full Time, Degree Seeking Undergraduate Student Cohort
Migration Study (Fall 1998 - Fall 2002)**

COLLEGE	Cohort Fall 1998	Grad. Total	Same college	Other college	Grad. Rate	Attr. Rate	Attr. Rate	College Migration Pattern										Cont. Rate		Retention Rate
								AG	BUS	ENGR	FOR	HHS	LA	PHARM	SCI	UESP	Subtotal	Trans.	College	
Agricultural Sciences	165	69	60	9	41.8%	47	28.5%	37	1	0	3	2	1	0	2	3	49	7.3%	22.4%	29.7%
Business	294	87	64	23	29.6%	99	33.7%	3	48	2	1	13	34	0	1	6	108	20.4%	16.3%	36.7%
Engineering	518	93	70	23	18.0%	178	34.4%	6	24	158	5	6	23	0	15	10	247	17.2%	30.5%	47.7%
Forestry	51	12	8	4	23.5%	21	41.2%	1	1	1	13	0	0	0	2	0	18	9.8%	25.5%	35.3%
Home Economics and Education	132	50	44	6	37.9%	53	40.2%	1	1	1	0	20	5	0	1	0	29	6.8%	15.2%	22.0%
Health & Human Performance	138	44	31	13	31.9%	47	34.1%	0	8	2	2	27	7	0	1	0	47	34.1%	0.0%	34.1%
Liberal Arts	270	92	81	11	34.1%	99	36.7%	1	4	3	0	13	55	0	2	1	79	8.9%	20.4%	29.3%
Pharmacy	35	12	0	12	34.3%	15	42.9%	0	0	0	0	1	4	1	1	1	8	20.0%	2.9%	22.9%
Science	405	134	91	43	33.1%	138	34.1%	7	10	9	1	15	28	0	62	1	133	17.5%	15.3%	32.8%
University Exploratory Studies Program	264	59	0	59	22.3%	110	41.7%	2	16	7	4	20	33	1	9	3	95	34.8%	1.1%	36.0%
TOTAL	2,272	652	449	203	28.7%	807	35.5%	58	113	183	29	117	190	2	96	25	813	35.8%		35.8%

**Table 7.1: Fall 1998 First Time, Full Time, Degree Seeking Undergraduate Student Cohort
Net Gain / Loss by College (Fall 1998 - Fall 2002)**

COLLEGE	AG	BUS	ENGR	FOR	HEC-HHS	HPE-HHS	LA	PHARM	SCI	UESP	Total (net gain/loss)	Cont. from original cohort	%	Fall 2002 Enrollment for each college	%
Agricultural Sciences	0	2	6	-2	-1	0	0	0	5	-1	9	49	6.0%	58	7.1%
Business	-2	0	22	0	-12	8	-30	0	9	10	5	108	13.3%	113	13.9%
Engineering	-6	-22	0	-4	-5	2	-20	0	-6	-3	-64	247	30.4%	183	22.5%
Forestry	2	0	4	0	0	2	0	0	-1	4	11	18	2.2%	29	3.6%
Home Economics and Education	1	12	5	0	0	27	8	1	14	20	88	29	3.6%	117	14.4%
Health & Human Performance	0	-8	-2	-2	-27	0	-7	0	-1	0	-47	47	5.8%	0	0.0%
Liberal Arts	0	30	20	0	-8	7	0	4	26	32	111	79	9.7%	190	23.4%
Pharmacy	0	0	0	0	-1	0	-4	0	-1	0	-6	8	1.0%	2	0.2%
Science	-5	-9	6	1	-14	1	-26	1	0	8	-37	133	16.4%	96	11.8%
University Exploratory Studies Program	1	-10	3	-4	-20	0	-32	0	-8	0	-70	95	11.7%	25	3.1%
Total											0	813	100%	813	100%

Source: Office of Institutional Research, (11/9/2005).

**Table 8: Fall 1998 First Time, Full Time, Degree Seeking Undergraduate Student Cohort
Migration Study (Fall 1998 - Fall 2003)**

COLLEGE	Cohort Fall 1998	Grad. Total	Same college	Other college	Grad. Rate	Attr. Rate	College Migration Pattern													Cont. Rate		Retention Rate
							AG	BUS	ED	ENGR	FOR	HHS	LA	PHARM	SCI	UESP	Subtotal	Trans.	College			
Agricultural Sciences	165	104	85	19	63.0%	48	29.1%	9	0	0	0	0	1	2	0	1	0	13	2.4%	5.5%	7.9%	
Business	294	160	104	56	54.4%	114	38.8%	0	2	0	1	0	4	12	0	1	0	20	6.1%	0.7%	6.8%	
Engineering	518	272	201	71	52.5%	168	32.4%	2	5	0	40	2	3	18	0	5	3	78	15.1%	0.0%	15.1%	
Forestry	51	27	20	7	52.9%	21	41.2%	1	1	0	0	1	0	0	0	0	0	3	5.9%	0.0%	5.9%	
Home Economics and Education	132	69	56	13	52.3%	56	42.4%	0	0	0	0	0	6	1	0	0	0	7	5.3%	0.0%	5.3%	
Health & Human Performance	138	79	51	28	57.2%	49	35.5%	0	1	1	2	0	5	1	0	0	0	10	7.2%	0.0%	7.2%	
Liberal Arts	270	146	118	28	54.1%	107	39.6%	0	0	0	0	0	0	16	0	1	0	17	0.4%	5.9%	6.3%	
Pharmacy	35	17	0	17	48.6%	17	48.6%	0	0	0	0	0	0	1	0	0	0	1	2.9%	0.0%	2.9%	
Science	405	232	138	94	57.3%	141	34.8%	2	3	0	1	0	2	10	0	13	1	32	4.7%	3.2%	7.9%	
University Exploratory Studies Program	264	116	0	116	43.9%	118	44.7%	0	5	0	3	2	1	12	0	5	2	30	10.6%	0.8%	11.4%	
TOTAL	2,272	1222	773	449	53.8%	839	36.9%	14	17	1	47	5	22	73	0	26	6	211	9.3%		9.3%	

**Table 8.1: Fall 1998 First Time, Full Time, Degree Seeking Undergraduate Student Cohort
Net Gain / Loss by College (Fall 1998 - Fall 2003)**

COLLEGE	AG	BUS	ENGR	FOR	HEC-HHS	HPE-HHS	LA	PHARM	SCI	UESP	Total (net gain/loss)	Cont. from original cohort		Fall 2003 Enrollment	
												%	%	number	%
Agricultural Sciences	0	0	2	1	-1	-1	-2	0	1	0	0	13	6.2%	13	6.2%
Business	0	0	4	1	-4	-3	-12	0	2	5	-7	20	9.5%	13	6.2%
Engineering	-2	-4	0	-2	-3	-1	-18	0	-4	0	-34	78	37.0%	44	20.9%
Forestry	-1	-1	2	0	0	0	0	0	0	2	2	3	1.4%	5	2.4%
Home Economics and Education	1	4	3	0	0	-1	-1	0	2	1	9	7	3.3%	16	7.6%
Health & Human Performance	1	3	1	0	1	0	-1	0	2	1	8	10	4.7%	18	8.5%
Liberal Arts	2	12	18	0	1	1	0	1	9	12	56	17	8.1%	73	34.6%
Pharmacy	0	0	0	0	0	0	-1	0	0	0	-1	1	0.5%	0	0.0%
Science	-1	-2	4	0	-2	-2	-9	0	0	4	-8	32	15.2%	24	11.4%
University Exploratory Studies Program	0	-5	0	-2	-1	-1	-12	0	-4	0	-25	30	14.2%	5	2.4%
Total											0	211	100%	211	100%

**Table 9: Fall 1998 First Time, Full Time, Degree Seeking Undergraduate Student Cohort
Migration Study (Fall 1998 - Fall 2004)**

COLLEGE	Cohort Fall 1998	Grad. Total	Same college	Other college	Grad. Rate	Attr. Rate	Attr. Rate	College Migration Pattern										Cont. Rate		Retention Rate
								AG	BUS	ENGR	FOR	HHS	LA	PHARM	SCI	UESP	Subtotal	Trans.	College	
Agricultural Sciences	165	115	96	19	69.7%	44	26.7%	2	1	0	0	0	2	0	1	0	6	2.4%	1.2%	3.6%
Business	294	173	109	64	58.8%	108	36.7%	1	2	0	0	2	8	0	0	0	13	3.7%	0.7%	4.4%
Engineering	518	325	233	92	62.7%	170	32.8%	2	5	7	1	2	4	0	1	1	23	3.1%	1.4%	4.4%
Forestry	51	29	21	8	56.9%	21	41.2%	0	0	0	1	0	0	0	0	0	1	0.0%	2.0%	2.0%
Home Economics and Education	132	75	62	13	56.8%	56	42.4%	0	0	0	0	0	1	0	0	0	1	0.8%	0.0%	0.8%
Health & Human Performance	138	89	56	33	64.5%	48	34.8%	0	0	0	0	1	0	0	0	0	1	0.0%	0.7%	0.7%
Liberal Arts	270	155	127	28	57.4%	107	39.6%	0	0	0	0	1	7	0	0	0	8	0.4%	2.6%	3.0%
Pharmacy	35	19	0	19	54.3%	16	45.7%	0	0	0	0	0	0	0	0	0	0	0.0%	0.0%	0.0%
Science	405	254	146	108	62.7%	137	33.8%	1	1	0	0	1	6	0	4	1	14	2.5%	1.0%	3.5%
University Exploratory Studies Program	264	138	0	138	52.3%	112	42.4%	0	3	1	0	0	9	0	1	0	14	5.3%	0.0%	5.3%
TOTAL	2,272	1372	850	522	60.4%	819	36.0%	6	12	8	2	7	37	0	7	2	81	3.6%		3.6%

**Table 9.1: Fall 1998 First Time, Full Time, Degree Seeking Undergraduate Student Cohort
Net Gain / Loss by College (Fall 1998 - Fall 2004)**

COLLEGE	AG	BUS	ENGR	FOR	HEC-HHS	HPE-HHS	LA	PHARM	SCI	UESP	Total (net gain/loss)	Cont. from		Fall 2004 Enrollment	
												original cohort	%	number	%
Agricultural Sciences	0	0	2	0	0	0	-2	0	0	0	0	6	7.4%	6	7.4%
Business	0	0	5	0	-2	0	-8	0	1	3	-1	13	16.0%	12	14.8%
Engineering	-2	-5	0	-1	-2	0	-4	0	-1	0	-15	23	28.4%	8	9.9%
Forestry	0	0	1	0	0	0	0	0	0	0	1	1	1.2%	2	2.5%
Home Economics and Education	0	2	2	0	0	1	0	0	1	0	6	1	1.2%	7	8.6%
Health & Human Performance	0	0	0	0	-1	0	0	0	0	0	-1	1	1.2%	0	0.0%
Liberal Arts	2	8	4	0	0	0	0	0	6	9	29	8	9.9%	37	45.7%
Pharmacy	0	0	0	0	0	0	0	0	0	0	0	0	0.0%	0	0.0%
Science	0	-1	1	0	-1	0	-6	0	0	0	-7	14	17.3%	7	8.6%
University Exploratory Studies Program	0	-3	0	0	0	0	-9	0	0	0	-12	14	17.3%	2	2.5%
Total											0	81	100%	81	100%