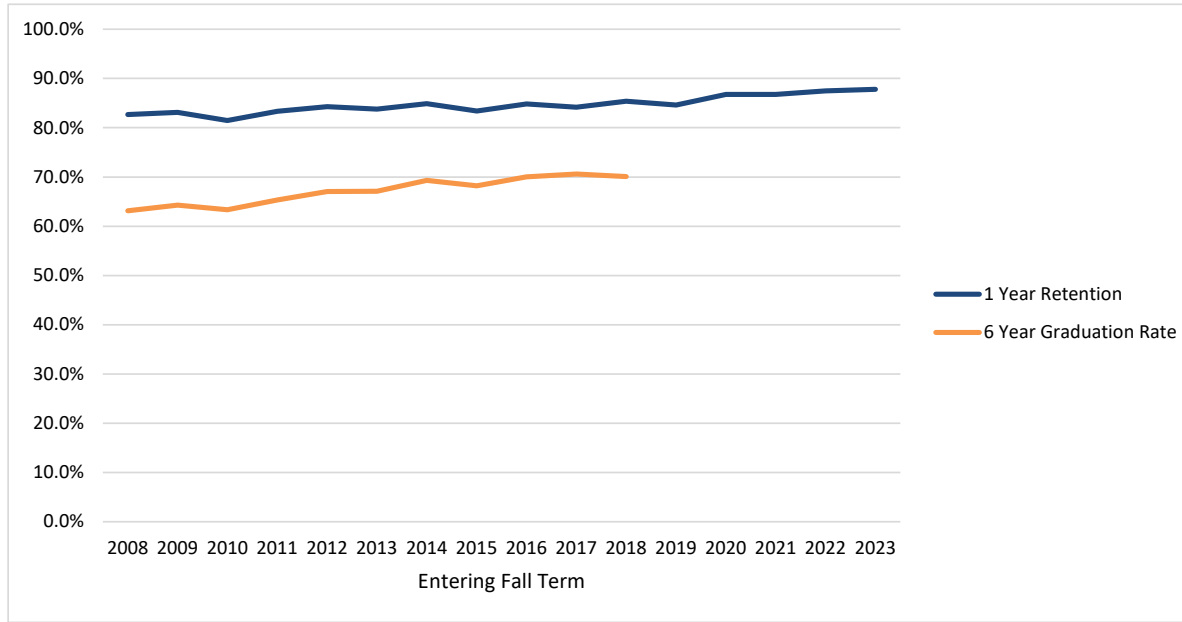


Retention and Graduation Rates of First-time, Full-time Degree Seeking Freshmen

OSU Total



Entering Fall Term	2008	2009	2010	2011	2012	2013	2014	2015	2016	2017	2018	2019	2020	2021	2022	2023
Cohort	3003	3314	3480	3335	3321	3553	3449	3338	3521	3418	3339	3040	3123	3601	4063	4094
1 Year Retention	82.7%	83.1%	81.5%	83.4%	84.3%	83.8%	84.9%	83.4%	84.8%	84.2%	85.4%	84.6%	86.8%	86.8%	87.5%	87.8%
6 Year Graduation Rate	63.1%	64.3%	63.3%	65.3%	67.0%	67.1%	69.3%	68.2%	70.0%	70.6%	70.1%					

Cohort: first-time college, full-time degree seeking undergraduates admitted for fall term or preceding summer term.

First-time: never matriculated as degree-seeking students at another college or university.

Full-time: enrolled in 12 or more credit hours in first fall term.

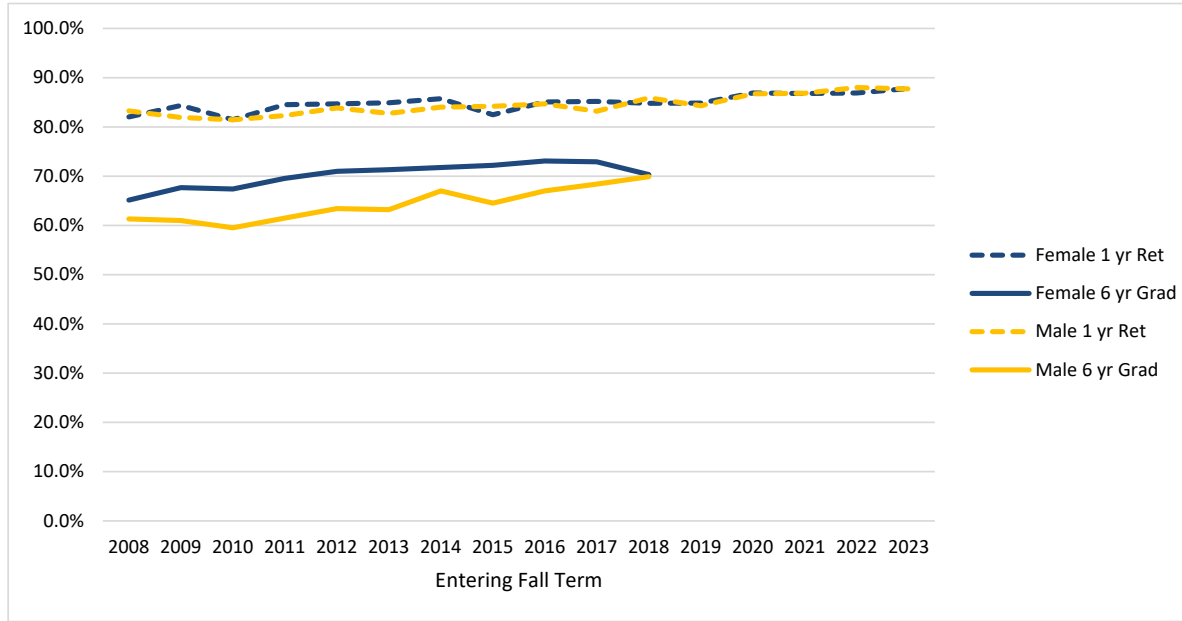
Retained: enrolled in a subsequent fall term but not yet graduated.

Graduated: received first bachelor's degree by the summer before the given following fall term.

Example, 6 year graduation counts degrees earned up to the summer before the seventh fall term.

Retention and Graduation Rates of First-time, Full-time Degree Seeking Freshmen

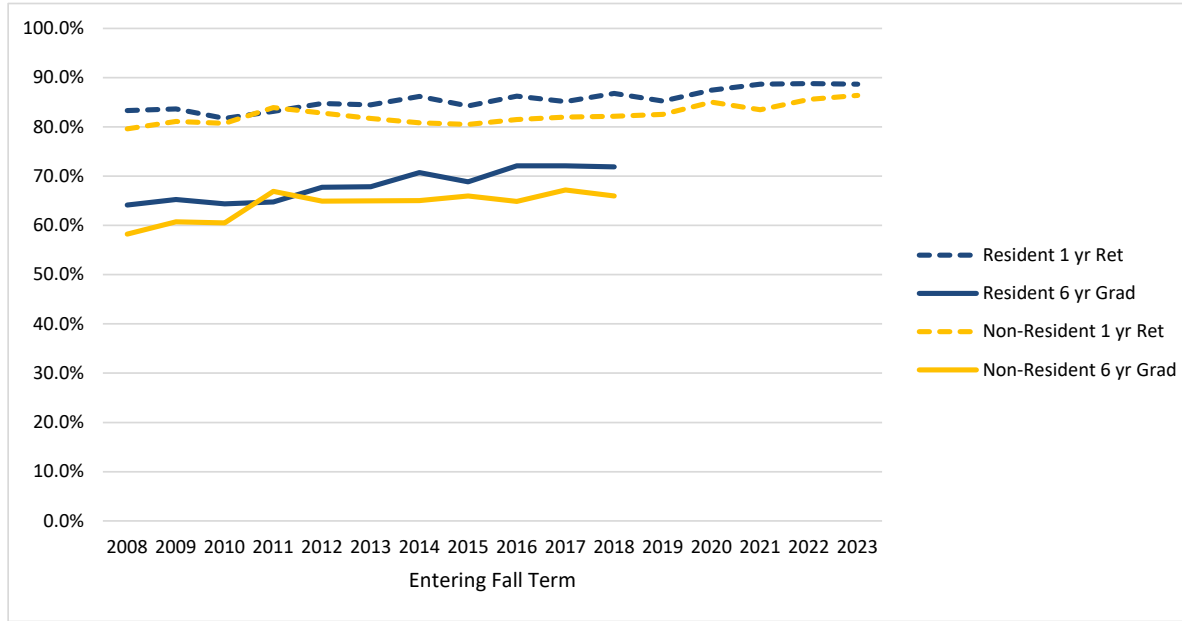
Female/ Male



Entering Fall Term	2008	2009	2010	2011	2012	2013	2014	2015	2016	2017	2018	2019	2020	2021	2022	2023
Female	1420	1621	1679	1599	1580	1706	1689	1596	1734	1659	1623	1483	1512	1746	2035	2056
Female 1 yr Ret	82.0%	84.3%	81.5%	84.5%	84.7%	84.9%	85.7%	82.5%	85.1%	85.2%	84.8%	84.8%	86.9%	86.8%	86.9%	87.8%
Female 6 yr Grad	65.1%	67.7%	67.4%	69.5%	71.0%	71.3%	71.8%	72.2%	73.1%	72.9%	70.3%					
Male	1583	1693	1801	1736	1741	1847	1760	1742	1787	1759	1716	1557	1611	1856	2028	2038
Male 1 yr Ret	83.3%	81.9%	81.5%	82.3%	83.9%	82.7%	84.0%	84.2%	84.7%	83.2%	85.9%	84.3%	86.7%	86.9%	88.0%	87.7%
Male 6 yr Grad	61.3%	61.0%	59.5%	61.5%	63.4%	63.2%	67.0%	64.5%	67.0%	68.4%	69.9%					

Retention and Graduation Rates of First-time, Full-time Degree Seeking Freshmen

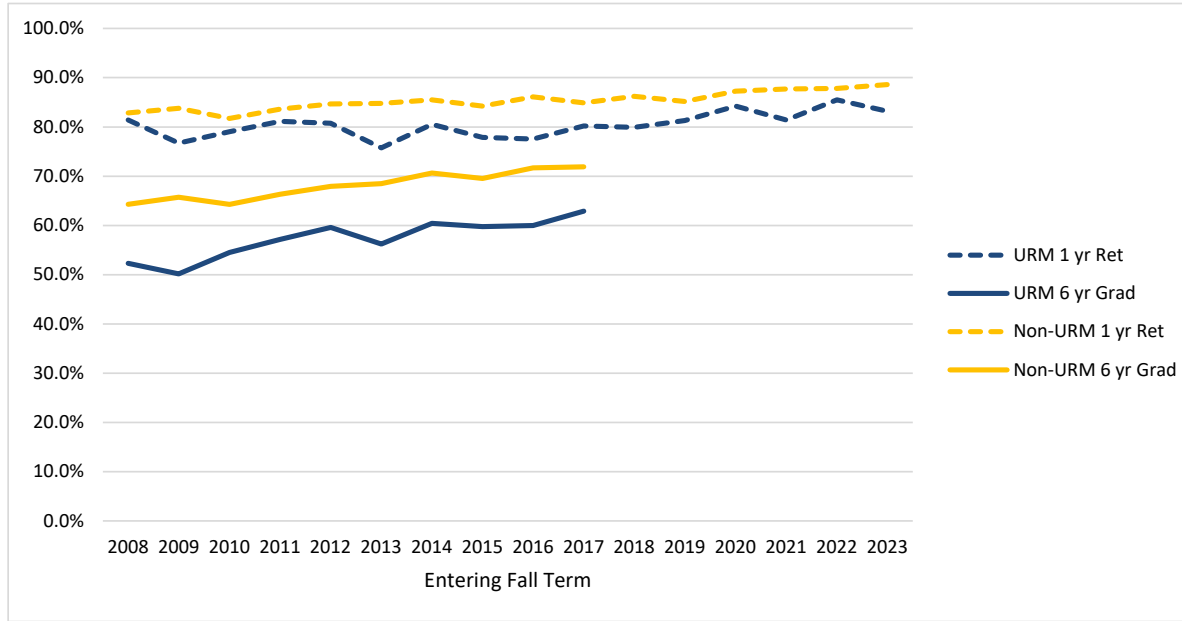
Oregon Resident/ Non-Resident



Entering Fall Term	2008	2009	2010	2011	2012	2013	2014	2015	2016	2017	2018	2019	2020	2021	2022	2023
Resident	2493	2588	2551	2459	2489	2633	2588	2544	2514	2404	2330	2254	2234	2283	2353	2381
Resident 1 yr Ret	83.3%	83.7%	81.7%	83.2%	84.7%	84.5%	86.2%	84.3%	86.2%	85.1%	86.8%	85.3%	87.5%	88.7%	88.8%	88.7%
Resident 6 yr Grad	64.1%	65.3%	64.4%	64.8%	67.7%	67.8%	70.7%	68.9%	72.1%	72.1%	71.9%					
Non-Resident	510	726	929	876	832	920	861	794	1007	1014	1009	786	889	1318	1710	1713
Non-Resident 1 yr Ret	79.6%	81.1%	80.7%	83.9%	82.8%	81.7%	80.8%	80.5%	81.5%	82.0%	82.2%	82.6%	85.0%	83.5%	85.6%	86.4%
Non-Resident 6 yr Grad	58.2%	60.7%	60.5%	66.9%	64.9%	65.0%	65.0%	66.0%	64.9%	67.2%	66.0%					

Retention and Graduation Rates of First-time, Full-time Degree Seeking Freshmen

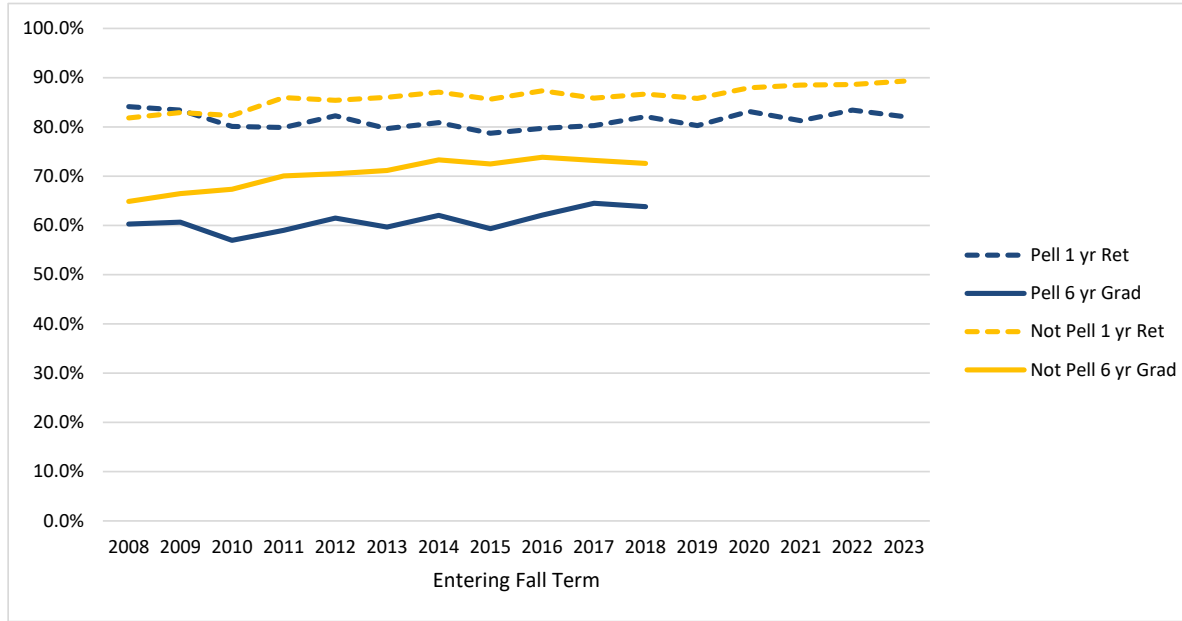
Underrepresented Ethnic Group (African American, American Indian/Alaska Native, Hispanic, Native Hawaiian/Pacific Islander)/ Non-URM



Entering Fall Term	2008	2009	2010	2011	2012	2013	2014	2015	2016	2017	2018	2019	2020	2021	2022	2023
URM	285	309	334	355	369	400	437	452	490	480	433	486	546	533	588	613
URM 1 yr Ret	81.4%	76.7%	79.0%	81.1%	80.8%	75.8%	80.5%	77.9%	77.6%	80.2%	79.9%	81.3%	84.2%	81.4%	85.5%	83.2%
URM 6 yr Grad	52.3%	50.2%	54.5%	57.2%	59.6%	56.3%	60.4%	59.7%	60.0%	62.9%						
Non-URM	2718	3005	3146	2980	2952	3153	3012	2886	3031	2938	2906	2554	2577	3068	3475	3481
Non-URM 1 yr Ret	82.8%	83.8%	81.7%	83.6%	84.7%	84.8%	85.5%	84.2%	86.1%	84.9%	86.2%	85.2%	87.3%	87.7%	87.8%	88.6%
Non-URM 6 yr Grad	64.3%	65.7%	64.3%	66.3%	68.0%	68.5%	70.6%	69.5%	71.7%	71.9%						

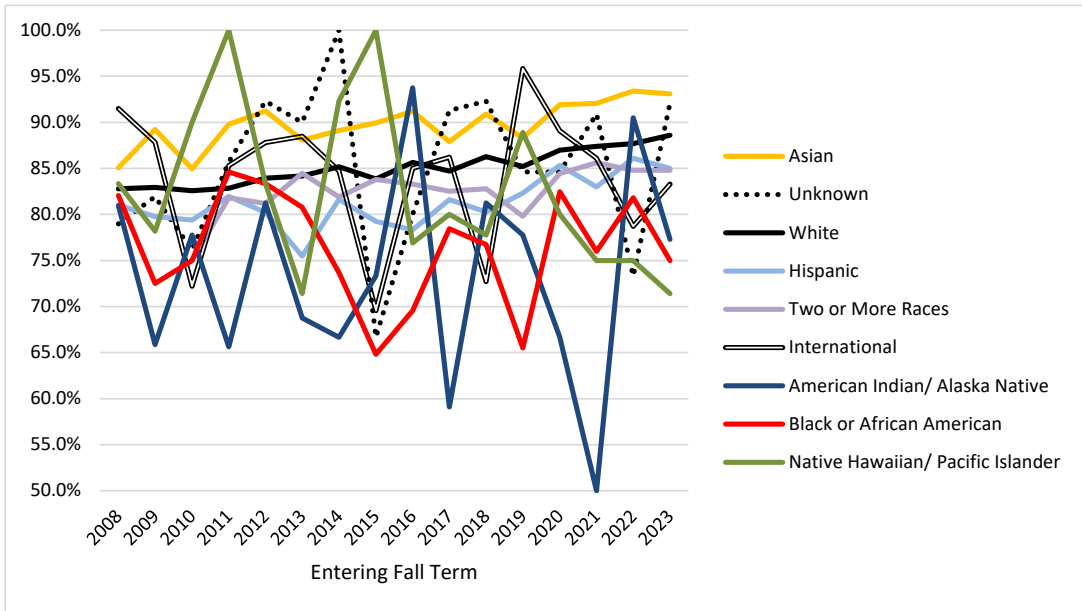
Retention and Graduation Rates of First-time, Full-time Degree Seeking Freshmen

Pell/ Not-Pell



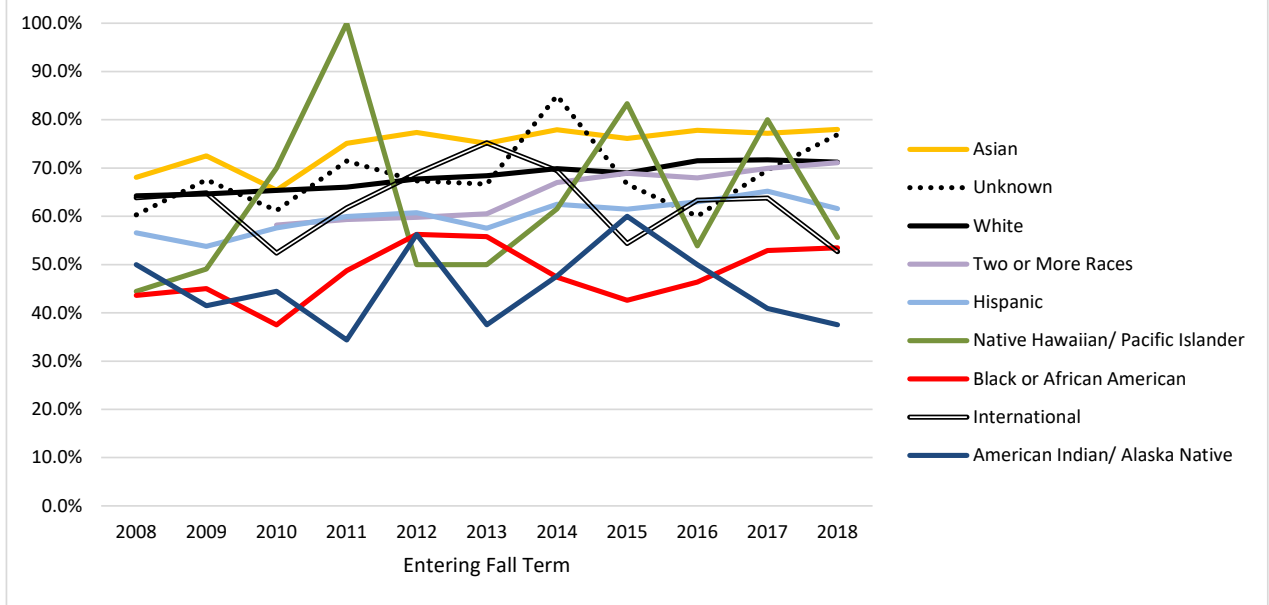
Entering Fall Term	2008	2009	2010	2011	2012	2013	2014	2015	2016	2017	2018	2019	2020	2021	2022	2023
Pell	1127	1256	1348	1422	1278	1254	1222	1090	1139	1015	948	676	758	821	860	876
Pell 1 yr Ret	84.1%	83.4%	80.1%	79.9%	82.2%	79.7%	80.9%	78.7%	79.7%	80.3%	82.1%	80.3%	83.1%	81.2%	83.4%	82.1%
Pell 6 yr Grad	60.2%	60.7%	57.0%	59.0%	61.5%	59.6%	62.0%	59.4%	62.1%	64.5%	63.8%					
Not Pell	1876	2058	2132	1913	2043	2299	2227	2248	2382	2403	2391	2364	2365	2780	3203	3218
Not Pell 1 yr Ret	81.8%	82.9%	82.3%	85.9%	85.4%	86.0%	87.1%	85.6%	87.4%	85.9%	86.7%	85.8%	87.9%	88.5%	88.6%	89.3%
Not Pell 6 yr Grad	64.9%	66.5%	67.4%	70.0%	70.5%	71.2%	73.3%	72.5%	73.8%	73.2%	72.6%					

Ethnic Group 1 Year Retention Rates



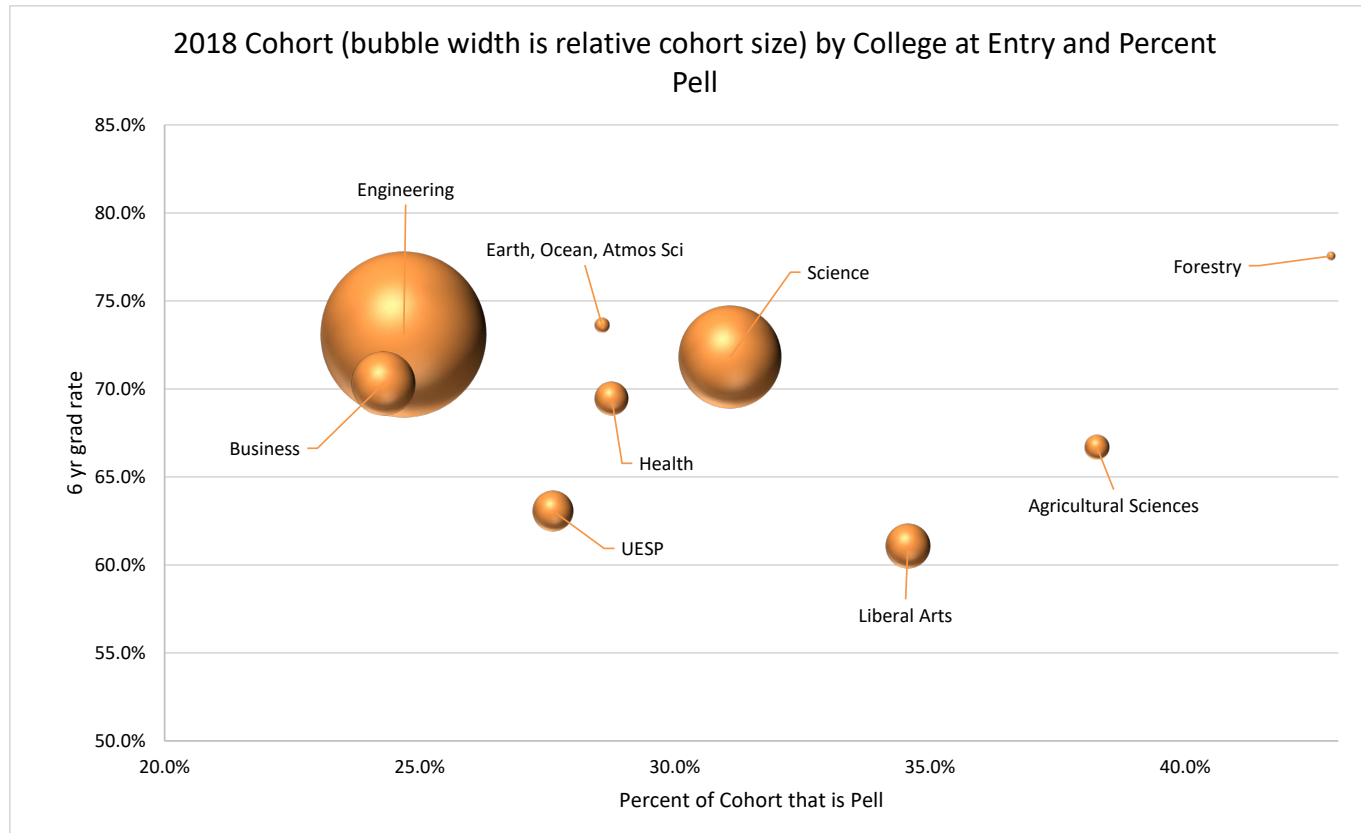
Entering Fall Term	2008	2009	2010	2011	2012	2013	2014	2015	2016	2017	2018	2019	2020	2021	2022	2023
American Indian/ Alaska Native	42	41	27	32	16	16	21	15	16	22	16	18	18	12	21	22
Asian	288	353	266	293	274	285	340	318	352	289	346	282	272	340	412	332
Black or African American	39	40	40	39	48	52	38	54	69	51	43	29	57	50	66	72
Hispanic	168	173	257	277	293	318	365	371	392	402	365	430	456	459	489	505
Native Hawaiian/ Pacific Islander	36	55	10	7	12	14	13	12	13	5	9	9	15	12	12	14
Two or More Races			220	236	266	309	282	296	287	309	308	248	257	278	343	329
Unknown	252	188	67	21	52	30	20	15	20	23	13	13	13	33	30	63
White	2131	2390	2467	2328	2270	2416	2311	2211	2312	2259	2184	1963	1971	2338	2615	2661
International	47	74	126	102	90	113	59	46	60	58	55	48	64	79	75	96
	81.0%	81.9%	76.1%	85.7%	92.3%	90.0%	100.0%	66.7%	80.0%	91.3%	92.3%	84.6%	84.6%	90.9%	73.3%	92.1%
	82.1%	72.5%	75.0%	84.6%	83.3%	80.8%	73.7%	64.8%	69.6%	78.4%	76.7%	65.5%	82.5%	76.0%	81.8%	75.0%
	81.0%	79.8%	79.4%	81.9%	80.2%	75.5%	81.6%	79.2%	78.3%	81.6%	80.3%	82.3%	85.3%	83.0%	86.1%	85.0%
	83.3%	78.2%	90.0%	100.0%	83.3%	71.4%	92.3%	100.0%	76.9%	80.0%	77.8%	88.9%	80.0%	75.0%	75.0%	71.4%
			75.0%	81.8%	81.2%	84.5%	81.9%	83.8%	83.3%	82.5%	82.8%	79.8%	84.4%	85.6%	84.8%	84.8%
	79.0%	81.9%	76.1%	85.7%	92.3%	90.0%	100.0%	66.7%	80.0%	91.3%	92.3%	84.6%	84.6%	90.9%	73.3%	92.1%
	82.8%	82.9%	82.6%	82.8%	83.9%	84.2%	85.2%	83.9%	85.7%	84.7%	86.3%	85.2%	87.0%	87.4%	87.7%	88.6%
	91.5%	87.8%	72.2%	85.3%	87.8%	88.5%	84.7%	69.6%	85.0%	86.2%	72.7%	95.8%	89.1%	86.1%	78.7%	83.3%

Ethnic Group 6 Year Graduation Rates



Entering Fall Term	2008	2009	2010	2011	2012	2013	2014	2015	2016	2017	2018	2019	2020	2021	2022	2023
American Indian/ Alaska Native	42	41	27	32	16	16	21	15	16	22	16	18	18	12	21	22
Asian	288	353	266	293	274	285	340	318	352	289	346	282	272	340	412	332
Black or African American	39	40	40	39	48	52	38	54	69	51	43	29	57	50	66	72
Hispanic	168	173	257	277	293	318	365	371	392	402	365	430	457	459	489	505
Native Hawaiian/ Pacific Islander	36	55	10	7	12	14	13	12	13	5	9	9	15	12	12	14
Two or More Races			220	236	266	309	282	296	287	309	308	249	257	278	343	329
Unknown	252	188	67	21	52	30	20	15	20	23	13	13	13	33	30	63
White	2131	2390	2467	2328	2270	2416	2311	2211	2312	2259	2184	1964	1972	2338	2615	2661
International	47	74	126	102	90	113	59	46	60	58	55	48	64	79	75	96
	63.8%	64.9%	52.4%	61.8%	68.9%	75.2%	69.5%	54.3%	63.3%	63.8%	52.7%					

2018 College Cohort 6 yr Grad Rate by Percent Pell



Pell percent provides a partial explanation for differences in college 6 year graduation rates, although many factors affect these rates. Pell students have lower graduation rates than non-Pell students, we expect lower graduation rates in colleges with higher Pell percent. However, Pell status is a function of time and federal policies. Number of students with Pell has been dropping and there has been a re-distribution of Pell percent across colleges, compared to the prior year cohort.

For the 2018 cohort, the following colleges performed above expectation for Pell level:

Forestry, Science, Agricultural Sciences, Earth Ocean Atmospheric Sciences and Engineering.

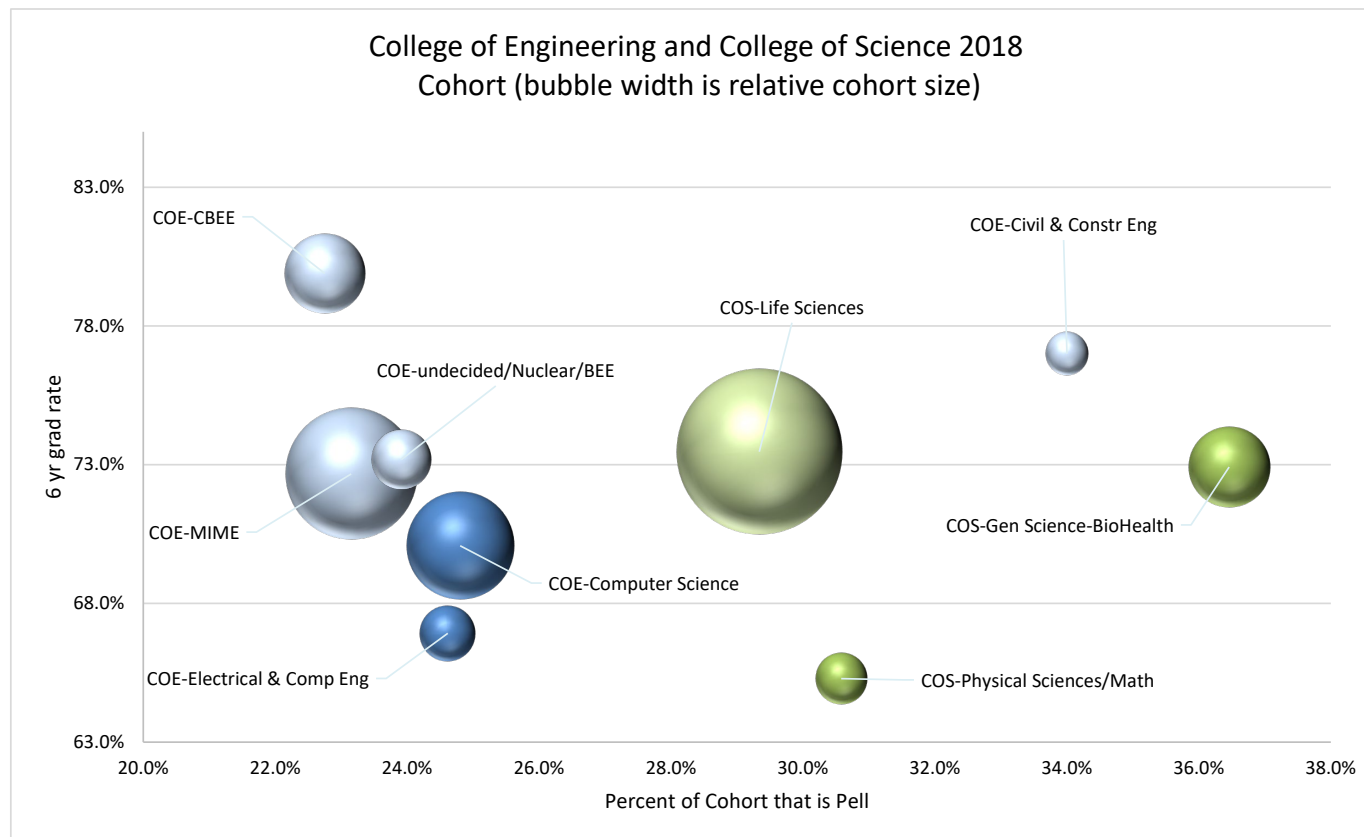
Liberal Arts had the lowest 6 year graduation rates but also the third highest proportion of Pell students.

Forestry had the highest graduation rate while also having a relatively high proportion of Pell students.

Engineering's remained about the same level as the prior year keeping the overall OSU rate about the same level.

Bubble widths provide the relative proportion of entering college cohorts. The next chart breaks up two of the larger cohorts into discipline groups.

2018 College of Engineering & College of Science Cohort 6 yr Grad Rate by Percent Pell



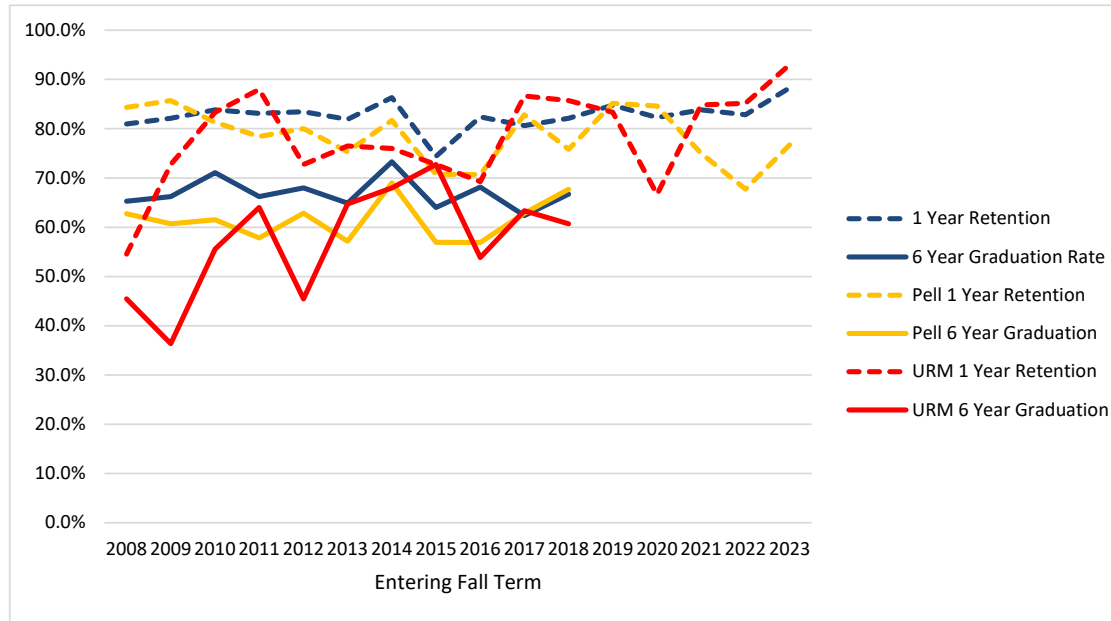
Electrical Engineering dropped by 10 percentage points while MIME rose by 1%. Undecided/Nuclear/BEE grew by 3 points. CBEE dropped by about 2% while still at the highest level for Engineering. Civil Engineering increased by about 10% to the second highest level for engineering. Computer Science maintained about the same level while other areas grew by about 2%. Civil Engineering has a relatively high graduation rates despite having the largest proportion of Pell students.

Life Sciences and Biohealth Sciences dropped about 2 percent. Physical Science/Math saw about a 10% decrease.

CBEE has the highest proportion of females (39%) among Engineering areas which are typically about 19%. This may partially explain higher graduation rates as females tend to graduate at higher rates. This pattern also occurs in Science where areas with higher proportions of females have high graduation rates: General/BioHealth Science and Life Science are 72% female, and Physical Science/Math is 50% female.

Retention and Graduation Rates by College of Entering Primary Major

Agricultural Sciences

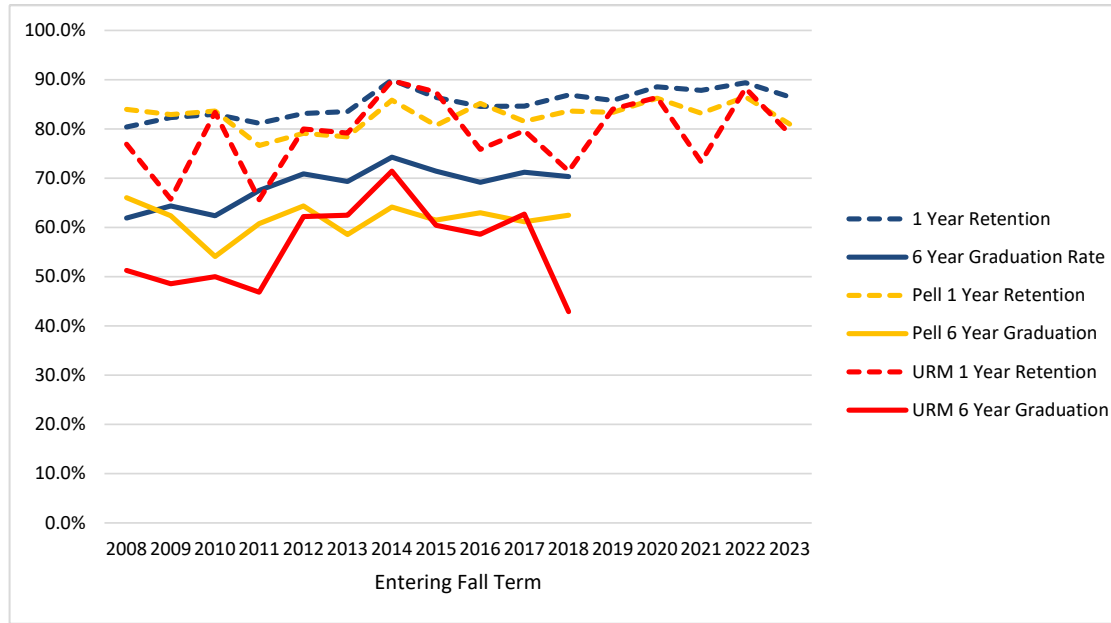


Entering Fall Term	2008	2009	2010	2011	2012	2013	2014	2015	2016	2017	2018	2019	2020	2021	2022	2023
Cohort	147	151	204	213	175	188	161	164	182	186	162	164	147	161	210	222
1 Year Retention	81.0%	82.1%	83.8%	83.1%	83.4%	81.9%	86.3%	74.4%	82.4%	80.6%	82.1%	84.8%	82.3%	83.9%	82.9%	88.3%
6 Year Graduation Rate	65.3%	66.2%	71.1%	66.2%	68.0%	64.9%	73.3%	64.0%	68.1%	62.4%	66.7%					
Pell	51	56	91	102	70	77	71	65	58	70	62	54	39	44	62	73
Pell 1 Year Retention	84.3%	85.7%	81.3%	78.4%	80.0%	75.3%	81.7%	70.8%	70.7%	82.9%	75.8%	85.2%	84.6%	75.0%	67.7%	76.7%
Pell 6 Year Graduation	62.7%	60.7%	61.5%	57.8%	62.9%	57.1%	69.0%	56.9%	56.9%	62.9%	67.7%					
URM	11	11	18	25	11	17	25	22	26	30	28	30	24	33	27	43
URM 1 Year Retention	54.5%	72.7%	83.3%	88.0%	72.7%	76.5%	76.0%	72.7%	69.2%	86.7%	85.7%	83.3%	66.7%	84.8%	85.2%	93.0%
URM 6 Year Graduation	45.5%	36.4%	55.6%	64.0%	45.5%	64.7%	68.0%	72.7%	53.8%	63.3%	60.7%					

- Retention and Graduation are to ANY major - not necessarily the primary major at entry.
- Pell is based on having a Pell grant at any point as an undergraduate, not just in term of entry.
- URM is standard federal Underrepresented Minority definition: American Indian/Alaska Native, Black or African American, Hispanic, Native Hawaiian/Pacific Islander

Retention and Graduation Rates by College of Entering Primary Major

Business

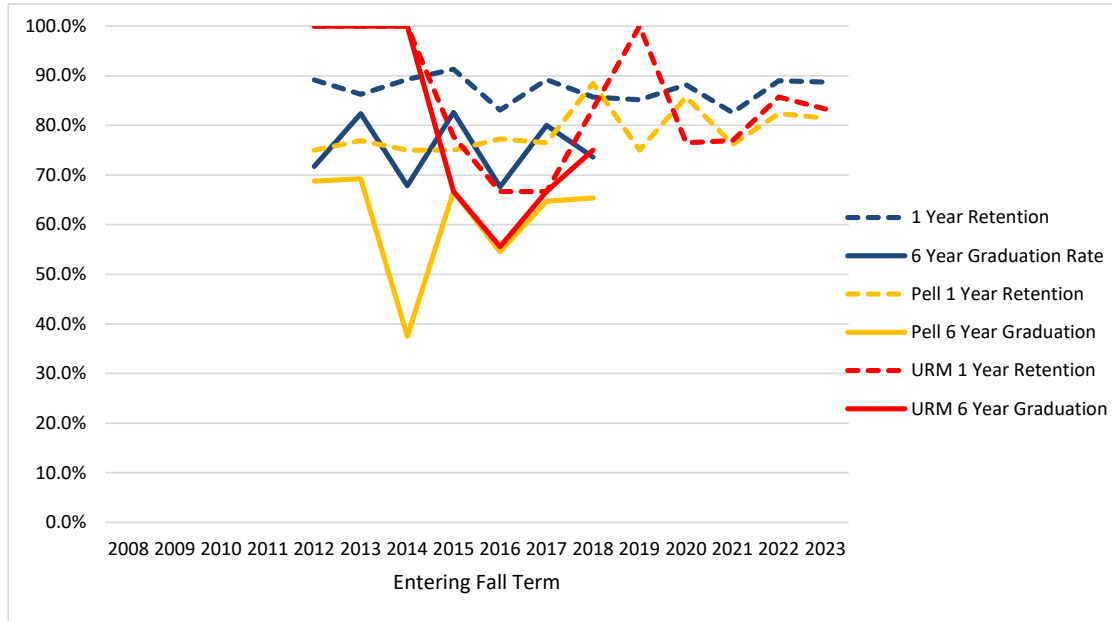


Entering Fall Term	2008	2009	2010	2011	2012	2013	2014	2015	2016	2017	2018	2019	2020	2021	2022	2023
Cohort	357	379	364	308	374	401	408	427	480	462	428	359	402	494	564	539
1 Year Retention	80.4%	82.3%	83.0%	81.2%	83.2%	83.5%	90.0%	86.4%	84.6%	84.6%	86.9%	85.8%	88.6%	87.9%	89.4%	86.5%
6 Year Graduation Rate	61.9%	64.4%	62.4%	67.5%	70.9%	69.3%	74.3%	71.4%	69.2%	71.2%	70.3%					
Pell	106	117	122	107	115	111	106	109	135	103	104	54	87	107	126	105
Pell 1 Year Retention	84.0%	82.9%	83.6%	76.6%	79.1%	78.4%	85.8%	80.7%	85.2%	81.6%	83.7%	83.3%	86.2%	83.2%	86.5%	81.0%
Pell 6 Year Graduation	66.0%	62.4%	54.1%	60.7%	64.3%	58.6%	64.2%	61.5%	63.0%	61.2%	62.5%					
URM	39	35	30	32	45	48	49	48	58	59	42	50	81	75	94	81
URM 1 Year Retention	76.9%	65.7%	83.3%	65.6%	80.0%	79.2%	89.8%	87.5%	75.9%	79.7%	71.4%	84.0%	86.4%	73.3%	88.3%	79.0%
URM 6 Year Graduation	51.3%	48.6%	50.0%	46.9%	62.2%	62.5%	71.4%	60.4%	58.6%	62.7%	42.9%					

- Retention and Graduation are to ANY major - not necessarily the primary major at entry.
- Pell is based on having a Pell grant at any point in first year, not just in term of entry.
- URM is standard federal Underrepresented Minority definition: American Indian/Alaska Native, Black or African American, Hispanic, Native Hawaiian/Pacific Islander

Retention and Graduation Rates by College of Entering Primary Major

Earth, Ocean, and Atmospheric Sciences

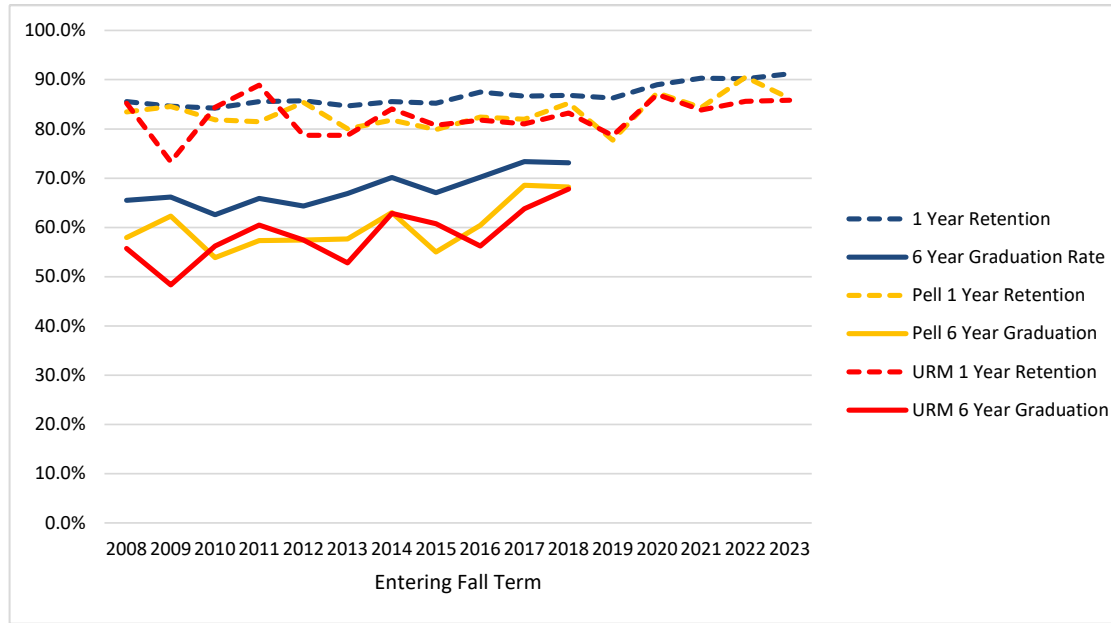


Entering Fall Term	2008	2009	2010	2011	2012	2013	2014	2015	2016	2017	2018	2019	2020	2021	2022	2023
Cohort					46	51	28	46	71	65	91	74	93	109	173	168
1 Year Retention					89.1%	86.3%	89.3%	91.3%	83.1%	89.2%	85.7%	85.1%	88.2%	82.6%	89.0%	88.7%
6 Year Graduation Rate					71.7%	82.4%	67.9%	82.6%	67.6%	80.0%	73.6%					
Pell					16	13	8	12	22	17	26	12	14	21	17	27
Pell 1 Year Retention					75.0%	76.9%	75.0%	75.0%	77.3%	76.5%	88.5%	75.0%	85.7%	76.2%	82.4%	81.5%
Pell 6 Year Graduation					68.8%	69.2%	37.5%	66.7%	54.5%	64.7%	65.4%					
URM					3	1	2	9	9	9	12	10	17	13	21	18
URM 1 Year Retention					100.0%	100.0%	100.0%	77.8%	66.7%	66.7%	83.3%	100.0%	76.5%	76.9%	85.7%	83.3%
URM 6 Year Graduation					100.0%	100.0%	100.0%	66.7%	55.6%	66.7%	75.0%					

- Retention and Graduation are to ANY major - not necessarily the primary major at entry.
- Pell is based on having a Pell grant at any point in first year, not just in term of entry.
- URM is standard federal Underrepresented Minority definition: American Indian/Alaska Native, Black or African American, Hispanic, Native Hawaiian/Pacific Islander

Retention and Graduation Rates by College of Entering Primary Major

Engineering

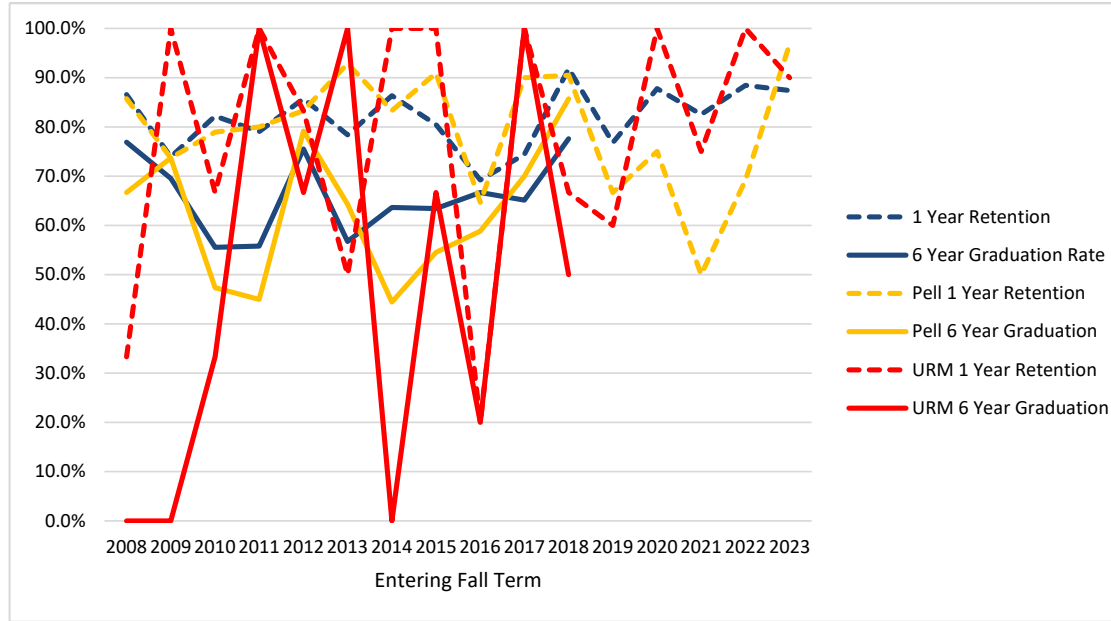


Entering Fall Term	2008	2009	2010	2011	2012	2013	2014	2015	2016	2017	2018	2019	2020	2021	2022	2023
Cohort	809	845	938	927	1051	1174	1123	1111	1125	1130	1122	1006	1091	1135	1324	1385
1 Year Retention	85.5%	84.6%	84.2%	85.5%	85.7%	84.7%	85.6%	85.2%	87.5%	86.6%	86.8%	86.3%	89.0%	90.3%	90.2%	91.2%
6 Year Graduation Rate	65.5%	66.2%	62.6%	65.9%	64.3%	66.9%	70.2%	67.1%	70.2%	73.4%	73.1%					
Pell	278	337	336	361	362	366	357	338	341	299	277	211	244	217	232	247
Pell 1 Year Retention	83.5%	84.6%	81.8%	81.4%	85.4%	80.1%	81.8%	79.9%	82.4%	81.9%	85.2%	77.7%	87.3%	84.3%	90.5%	86.2%
Pell 6 Year Graduation	57.9%	62.3%	53.9%	57.3%	57.5%	57.7%	63.0%	55.0%	60.4%	68.6%	68.2%					
URM	61	60	64	81	94	108	113	135	121	116	143	145	169	161	160	197
URM 1 Year Retention	85.2%	73.3%	84.4%	88.9%	78.7%	78.7%	84.1%	80.7%	81.8%	81.0%	83.2%	78.6%	87.0%	83.9%	85.6%	85.8%
URM 6 Year Graduation	55.7%	48.3%	56.3%	60.5%	57.4%	52.8%	62.8%	60.7%	56.2%	63.8%	67.8%					

- Retention and Graduation are to ANY major - not necessarily the primary major at entry.
- Pell is based on having a Pell grant at any point in first year, not just in term of entry.
- URM is standard federal Underrepresented Minority definition: American Indian/Alaska Native, Black or African American, Hispanic, Native Hawaiian/Pacific Islander

Retention and Graduation Rates by College of Entering Primary Major

Forestry

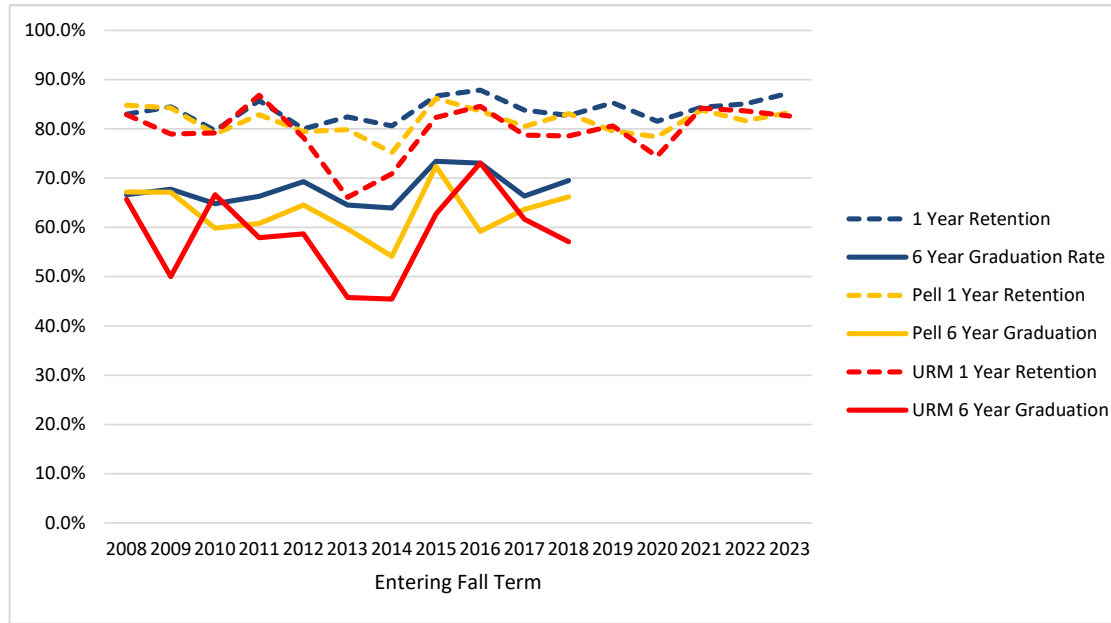


Entering Fall Term	2008	2009	2010	2011	2012	2013	2014	2015	2016	2017	2018	2019	2020	2021	2022	2023
Cohort	52	46	45	43	49	37	44	41	39	43	49	56	41	63	78	95
1 Year Retention	86.5%	73.9%	82.2%	79.1%	85.7%	78.4%	86.4%	80.5%	69.2%	74.4%	91.8%	76.8%	87.8%	82.5%	88.5%	87.4%
6 Year Graduation Rate	76.9%	69.6%	55.6%	55.8%	75.5%	56.8%	63.6%	63.4%	66.7%	65.1%	77.6%					
Pell	21	19	19	20	24	14	18	11	17	10	21	12	8	12	13	31
Pell 1 Year Retention	85.7%	73.7%	78.9%	80.0%	83.3%	92.9%	83.3%	90.9%	64.7%	90.0%	90.5%	66.7%	75.0%	50.0%	69.2%	96.8%
Pell 6 Year Graduation	66.7%	73.7%	47.4%	45.0%	79.2%	64.3%	44.4%	54.5%	58.8%	70.0%	85.7%					
URM	3	1	3	1	6	2	1	6	5	3	6	5	7	4	3	10
URM 1 Year Retention	33.3%	100.0%	66.7%	100.0%	83.3%	50.0%	100.0%	100.0%	20.0%	100.0%	66.7%	60.0%	100.0%	75.0%	100.0%	90.0%
URM 6 Year Graduation	0.0%	0.0%	33.3%	100.0%	66.7%	100.0%	0.0%	66.7%	20.0%	100.0%	50.0%					

- Retention and Graduation are to ANY major - not necessarily the primary major at entry.
- Pell is based on having a Pell grant at any point in first year, not just in term of entry.
- URM is standard federal Underrepresented Minority definition: American Indian/Alaska Native, Black or African American, Hispanic, Native Hawaiian/Pacific Islander

Retention and Graduation Rates by College of Entering Primary Major

Health (includes those entering in Public Health & Human Sciences)

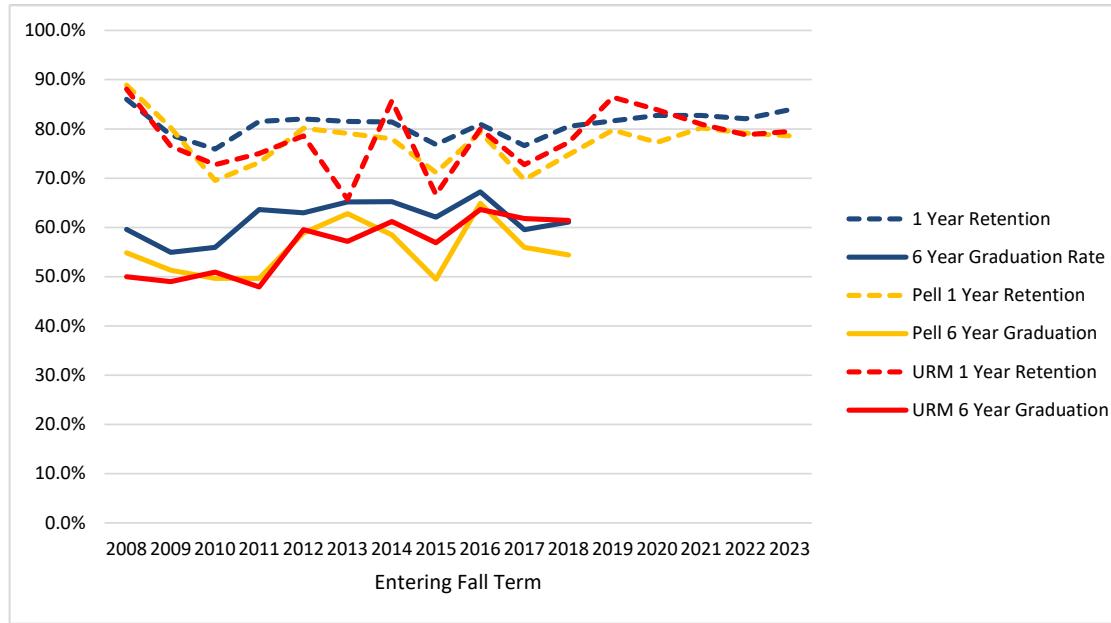


Entering Fall Term	2008	2009	2010	2011	2012	2013	2014	2015	2016	2017	2018	2019	2020	2021	2022	2023
Cohort	318	406	418	407	355	364	330	286	297	247	226	191	190	243	255	237
1 Year Retention	83.0%	84.5%	79.7%	85.7%	80.0%	82.4%	80.6%	86.7%	87.9%	83.8%	82.7%	85.3%	81.6%	84.4%	85.1%	87.3%
6 Year Graduation Rate	66.7%	67.7%	64.8%	66.3%	69.3%	64.6%	63.9%	73.4%	73.1%	66.4%	69.5%					
Pell	125	146	157	181	141	134	133	116	98	77	65	44	51	68	71	42
Pell 1 Year Retention	84.8%	84.2%	79.0%	82.9%	79.4%	79.9%	75.2%	86.2%	83.7%	80.5%	83.1%	79.5%	78.4%	83.8%	81.7%	83.3%
Pell 6 Year Graduation	67.2%	67.1%	59.9%	60.8%	64.5%	59.7%	54.1%	72.4%	59.2%	63.6%	66.2%					
URM	35	38	48	38	46	59	55	51	52	47	28	31	43	38	49	46
URM 1 Year Retention	82.9%	78.9%	79.2%	86.8%	78.3%	66.1%	70.9%	82.4%	84.6%	78.7%	78.6%	80.6%	74.4%	84.2%	83.7%	82.6%
URM 6 Year Graduation	65.7%	50.0%	66.7%	57.9%	58.7%	45.8%	45.5%	62.7%	73.1%	61.7%	57.1%					

- Retention and Graduation are to ANY major - not necessarily the primary major at entry.
- Pell is based on having a Pell grant at any point in first year, not just in term of entry.
- URM is standard federal Underrepresented Minority definition: American Indian/Alaska Native, Black or African American, Hispanic, Native Hawaiian/Pacific Islander

Retention and Graduation Rates by College of Entering Primary Major

Liberal Arts

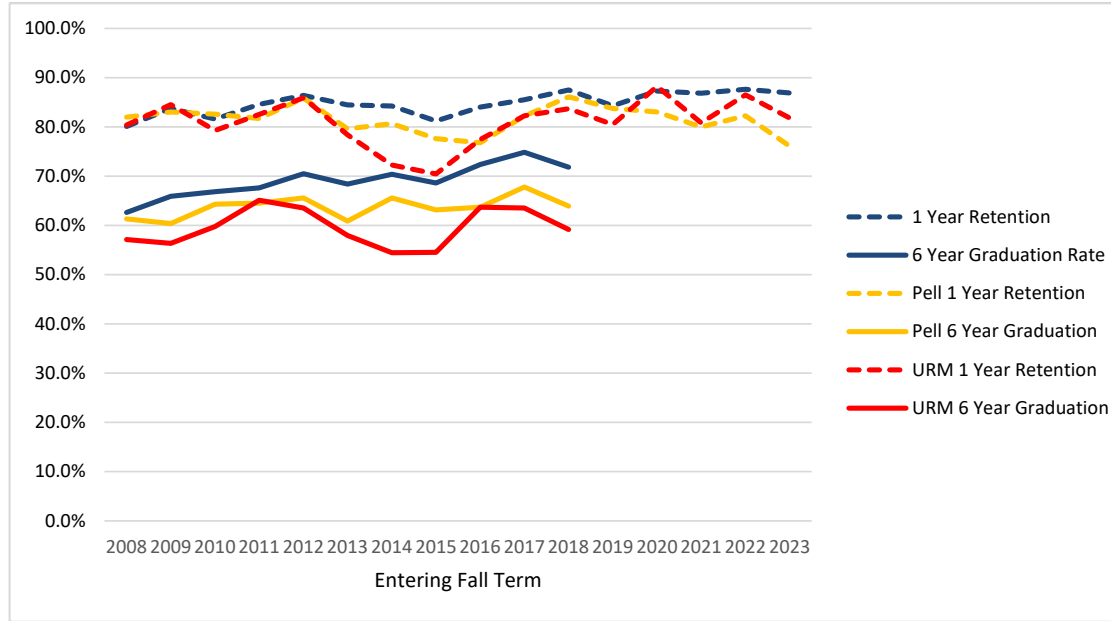


Entering Fall Term	2008	2009	2010	2011	2012	2013	2014	2015	2016	2017	2018	2019	2020	2021	2022	2023
Cohort	329	395	386	341	278	336	296	285	363	299	298	321	319	406	496	498
1 Year Retention	86.0%	78.7%	75.9%	81.5%	82.0%	81.5%	81.4%	76.8%	81.0%	76.6%	80.5%	81.6%	82.8%	82.8%	82.1%	83.9%
6 Year Graduation Rate	59.6%	54.9%	56.0%	63.6%	62.9%	65.2%	65.2%	62.1%	67.2%	59.5%	61.1%					
Pell	144	152	151	153	141	129	118	97	131	109	103	84	88	106	120	140
Pell 1 Year Retention	88.9%	80.3%	69.5%	73.2%	80.1%	79.1%	78.0%	71.1%	79.4%	69.7%	74.8%	79.8%	77.3%	80.2%	79.2%	78.6%
Pell 6 Year Graduation	54.9%	51.3%	49.7%	49.7%	58.9%	62.8%	58.5%	49.5%	64.9%	56.0%	54.4%					
URM	42	51	55	48	42	35	49	51	55	55	44	59	62	63	85	83
URM 1 Year Retention	88.1%	76.5%	72.7%	75.0%	78.6%	65.7%	85.7%	66.7%	80.0%	72.7%	77.3%	86.4%	83.9%	81.0%	78.8%	79.5%
URM 6 Year Graduation	50.0%	49.0%	50.9%	47.9%	59.5%	57.1%	61.2%	56.9%	63.6%	61.8%	61.4%					

- Retention and Graduation are to ANY major - not necessarily the primary major at entry.
- Pell is based on having a Pell grant at any point in first year, not just in term of entry.
- URM is standard federal Underrepresented Minority definition: American Indian/Alaska Native, Black or African American, Hispanic, Native Hawaiian/Pacific Islander

Retention and Graduation Rates by College of Entering Primary Major

Science

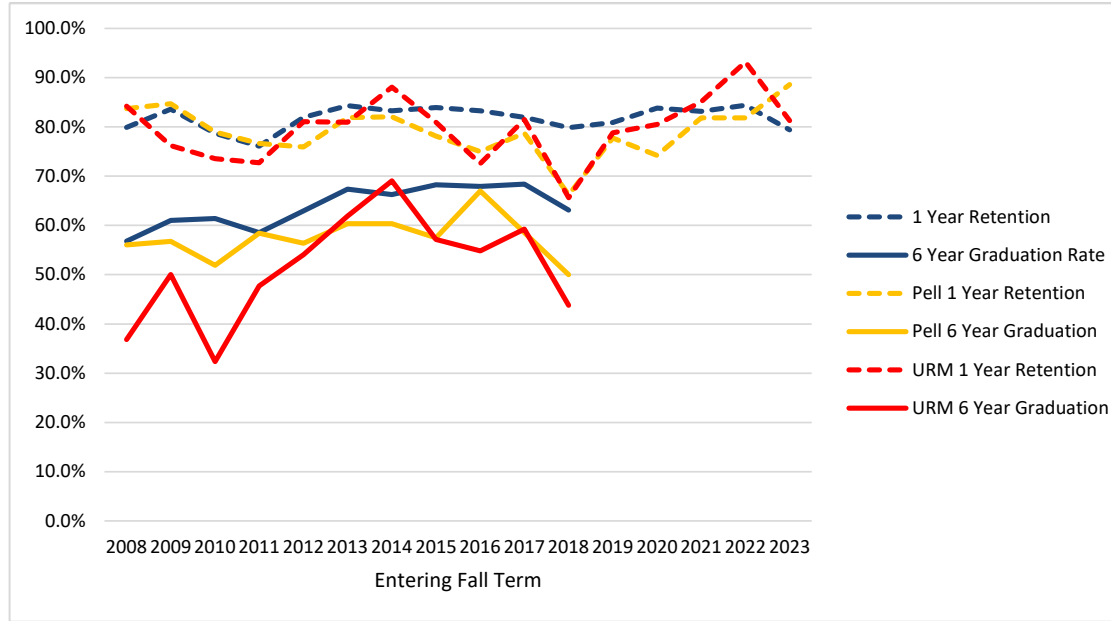


Entering Fall Term	2008	2009	2010	2011	2012	2013	2014	2015	2016	2017	2018	2019	2020	2021	2022	2023
Cohort	653	751	778	732	661	677	712	660	677	676	695	649	599	693	712	716
1 Year Retention	80.1%	83.8%	81.6%	84.6%	86.4%	84.5%	84.3%	81.2%	84.0%	85.5%	87.5%	84.3%	87.3%	86.9%	87.6%	86.9%
6 Year Graduation Rate	62.6%	65.9%	66.8%	67.6%	70.5%	68.4%	70.4%	68.6%	72.4%	74.9%	71.8%					
Pell	261	318	339	361	276	294	305	255	237	236	216	160	165	180	175	159
Pell 1 Year Retention	82.0%	83.0%	82.6%	81.7%	85.9%	79.6%	80.7%	77.6%	76.8%	82.2%	86.1%	83.8%	83.0%	80.0%	82.3%	76.1%
Pell 6 Year Graduation	61.3%	60.4%	64.3%	64.5%	65.6%	60.9%	65.6%	63.1%	63.7%	67.8%	63.9%					
URM	56	71	82	86	85	88	101	88	102	107	98	123	102	99	104	111
URM 1 Year Retention	80.4%	84.5%	79.3%	82.6%	85.9%	78.4%	72.3%	70.5%	77.5%	82.2%	83.7%	80.5%	88.2%	80.8%	86.5%	81.8%
URM 6 Year Graduation	57.1%	56.3%	59.8%	65.1%	63.5%	58.0%	54.5%	54.5%	63.7%	63.6%	59.2%					

- Retention and Graduation are to ANY major - not necessarily the primary major at entry.
- Pell is based on having a Pell grant at any point in first year, not just in term of entry.
- URM is standard federal Underrepresented Minority definition: American Indian/Alaska Native, Black or African American, Hispanic, Native Hawaiian/Pacific Islander

Retention and Graduation Rates by College of Entering Primary Major

University Exploratory Studies

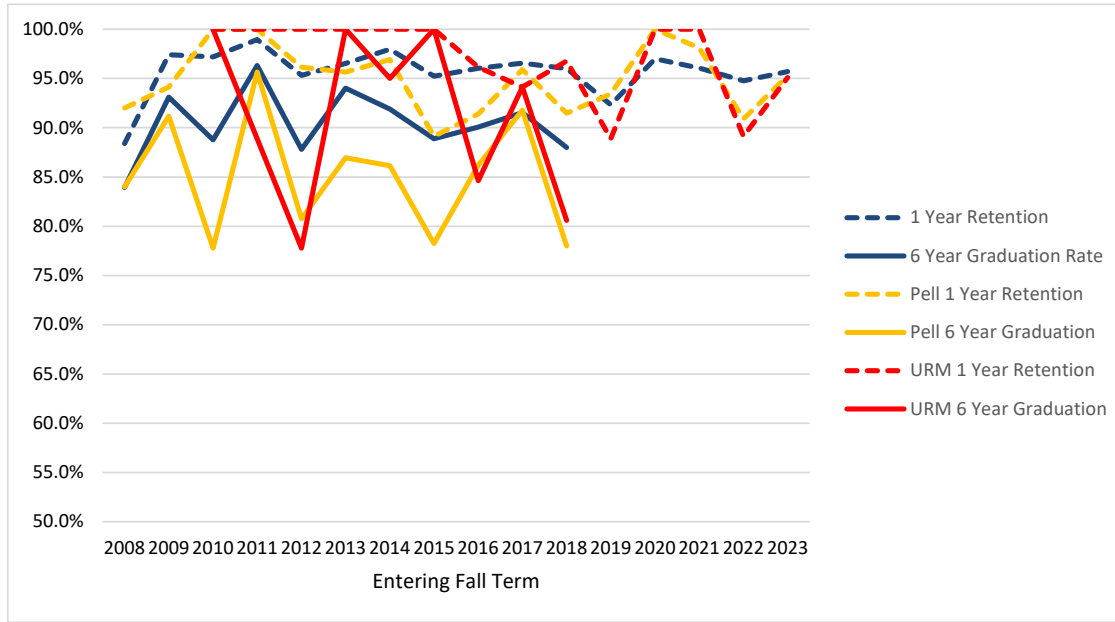


Entering Fall Term	2008	2009	2010	2011	2012	2013	2014	2015	2016	2017	2018	2019	2020	2021	2022	2023
Cohort	338	341	347	364	332	325	347	318	287	310	268	220	241	297	250	199
1 Year Retention	79.9%	83.6%	78.7%	76.1%	81.9%	84.3%	83.3%	84.0%	83.3%	81.9%	79.9%	80.9%	83.8%	83.2%	84.4%	79.4%
6 Year Graduation Rate	56.8%	61.0%	61.4%	58.5%	63.0%	67.4%	66.3%	68.2%	67.9%	68.4%	63.1%					
Pell	141	111	133	137	133	116	106	87	100	94	74	45	62	66	44	44
Pell 1 Year Retention	83.7%	84.7%	78.9%	76.6%	75.9%	81.9%	82.1%	78.2%	75.0%	78.7%	66.2%	77.8%	74.2%	81.8%	81.8%	88.6%
Pell 6 Year Graduation	56.0%	56.8%	51.9%	58.4%	56.4%	60.3%	60.4%	57.5%	67.0%	58.5%	50.0%					
URM	38	42	34	44	37	42	42	42	62	54	32	33	41	47	44	16
URM 1 Year Retention	84.2%	76.2%	73.5%	72.7%	81.1%	81.0%	88.1%	81.0%	72.6%	81.5%	65.6%	78.8%	80.5%	85.1%	93.2%	81.3%
URM 6 Year Graduation	36.8%	50.0%	32.4%	47.7%	54.1%	61.9%	69.0%	57.1%	54.8%	59.3%	43.8%					

- Retention and Graduation are to ANY major - not necessarily the primary major at entry.
- Pell is based on having a Pell grant at any point in first year, not just in term of entry.
- URM is standard federal Underrepresented Minority definition: American Indian/Alaska Native, Black or African American, Hispanic, Native Hawaiian/Pacific Islander

Retention and Graduation Rates

Honors College

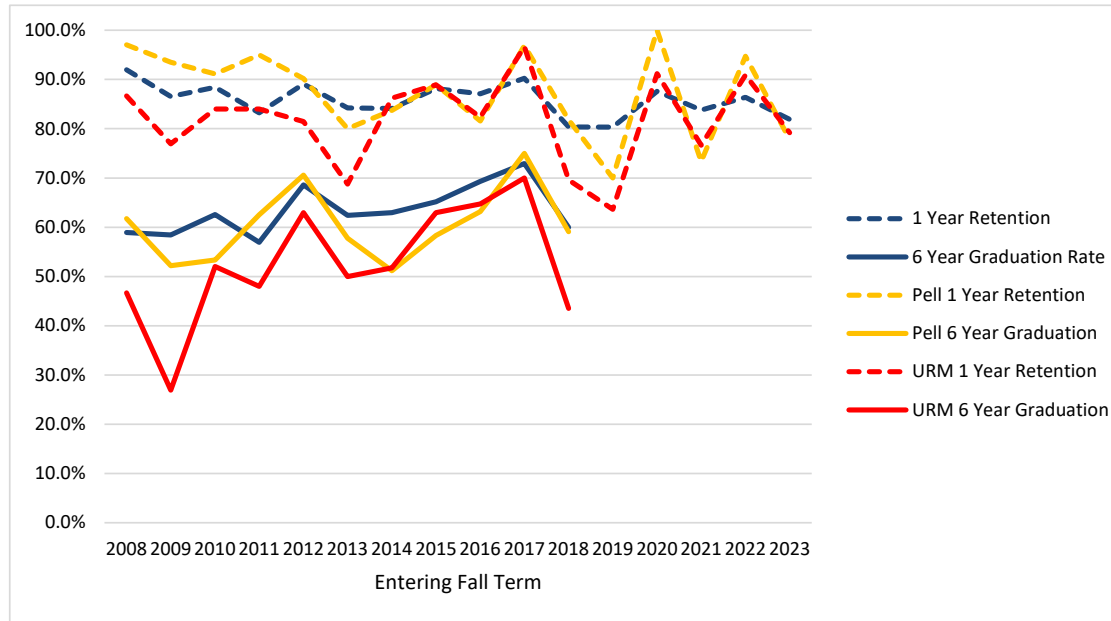


Entering Fall Term	2008	2009	2010	2011	2012	2013	2014	2015	2016	2017	2018	2019	2020	2021	2022	2023
Cohort	112	116	178	190	213	201	296	252	352	378	451	418	466	457	515	703
1 Year Retention	88.4%	97.4%	97.2%	98.9%	95.3%	96.5%	98.0%	95.2%	96.0%	96.6%	96.0%	92.3%	97.0%	96.1%	94.8%	95.7%
6 Year Graduation Rate	83.9%	93.1%	88.8%	96.3%	87.8%	94.0%	91.9%	88.9%	90.1%	91.5%	88.0%					
Pell	25	34	45	46	52	46	65	46	58	73	82	61	69	53	55	106
Pell 1 Year Retention	92.0%	94.1%	100.0%	100.0%	96.2%	95.7%	96.9%	89.1%	91.4%	95.9%	91.5%	93.4%	100.0%	98.1%	90.9%	95.3%
Pell 6 Year Graduation	84.0%	91.2%	77.8%	95.7%	80.8%	87.0%	86.2%	78.3%	86.2%	91.8%	78.0%					
URM	6	0	8	9	9	12	20	15	26	34	31	45	63	29	46	81
URM 1 Year Retention	83.3%		100.0%	100.0%	100.0%	100.0%	100.0%	100.0%	96.2%	94.1%	96.8%	88.9%	100.0%	100.0%	89.1%	95.1%
URM 6 Year Graduation	100.0%		100.0%	88.9%	77.8%	100.0%	95.0%	100.0%	84.6%	94.1%	80.6%					

- Based on Honors College identifier in first fall term
- These students are also counted in their respective entering college

Retention and Graduation Rates

Student Athletes



Entering Fall Term	2008	2009	2010	2011	2012	2013	2014	2015	2016	2017	2018	2019	2020	2021	2022	2023
Cohort	112	178	147	137	156	165	170	135	163	133	158	61	113	148	154	127
1 Year Retention	92.0%	86.5%	88.4%	83.2%	89.1%	84.2%	84.1%	88.1%	87.1%	90.2%	80.4%	80.3%	87.6%	83.8%	86.4%	81.9%
6 Year Graduation Rate	58.9%	58.4%	62.6%	56.9%	68.6%	62.4%	62.9%	65.2%	69.3%	72.9%	60.0%					
Pell	34	46	45	40	51	45	43	36	38	32	22	10	9	15	19	18
Pell 1 Year Retention	97.1%	93.5%	91.1%	95.0%	90.2%	80.0%	83.7%	88.9%	81.6%	96.9%	81.8%	70.0%	100.0%	73.3%	94.7%	77.8%
Pell 6 Year Graduation	61.8%	52.2%	53.3%	62.5%	70.6%	57.8%	51.2%	58.3%	63.2%	75.0%	59.1%					
URM	15	26	25	25	27	32	29	27	34	30	23	11	34	30	33	24
URM 1 Year Retention	86.7%	76.9%	84.0%	84.0%	81.5%	68.8%	86.2%	88.9%	82.4%	96.7%	69.6%	63.6%	91.2%	76.7%	90.9%	79.2%
URM 6 Year Graduation	46.7%	26.9%	52.0%	48.0%	63.0%	50.0%	51.7%	63.0%	64.7%	70.0%	43.5%					

- Based on Athlete identifier in first fall term
- These students are also counted in their respective entering college.

Oregon State University
Retention and Graduation Rates for Cohorts: Fall 2008 to Fall 2023
University Rates for Cohorts*

Year	Cohort	1 Yr Retained	2 Yr Retained	2 Yr Graduated	3 Yr Retained	3 Yr Graduated	4 Yr Retained	4 Yr Graduated	5 Yr Retained	5 Yr Graduated	6 Yr Retained	6 Yr Graduated
2008	3003	2483 82.7%	2214 73.7%	3 0.1%	2076 69.1%	50 1.7%	1081 36.0%	922 30.7%	331 11.0%	1685 56.1%	102 3.4%	1896 63.1%
2009	3314	2753 83.1%	2483 74.9%	4 0.1%	2319 70.0%	50 1.5%	1163 35.1%	1072 32.3%	305 9.2%	1925 58.1%	92 2.8%	2130 64.3%
2010	3480	2834 81.4%	2569 73.8%	4 0.1%	2410 69.3%	43 1.2%	1154 33.2%	1145 32.9%	312 9.0%	1995 57.3%	104 3.0%	2204 63.3%
2011	3335	2777 83.3%	2528 75.8%	2 0.1%	2341 70.2%	67 2.0%	1147 34.4%	1110 33.3%	305 9.1%	1975 59.2%	122 3.7%	2179 65.3%
2012	3321	2796 84.2%	2558 77.0%	3 0.1%	2401 72.3%	66 2.0%	1095 33.0%	1223 36.8%	317 9.5%	2029 61.1%	132 4.0%	2226 67.0%
2013	3553	2976 83.8%	2701 76.0%	7 0.2%	2495 70.2%	79 2.2%	1228 34.6%	1238 34.8%	313 8.8%	2149 60.5%	102 2.9%	2384 67.1%
2014	3449	2926 84.8%	2703 78.4%	4 0.1%	2537 73.6%	82 2.4%	1071 31.1%	1403 40.7%	273 7.9%	2198 63.7%	88 2.6%	2391 69.3%
2015	3338	2783 83.4%	2574 77.1%	1 0.0%	2378 71.2%	88 2.6%	1013 30.3%	1355 40.6%	250 7.5%	2125 63.7%	95 2.8%	2276 68.2%
2016	3521	2989 84.9%	2742 77.9%	6 0.2%	2539 72.1%	112 3.2%	937 26.6%	1631 46.3%	236 6.7%	2334 66.3%	104 3.0%	2466 70.0%
2017	3418	2878 84.2%	2683 78.5%	5 0.1%	2461 72.0%	122 3.6%	910 26.6%	1608 47.0%	216 6.3%	2282 66.8%	96 2.8%	2414 70.6%
2018	3339	2851 85.4%	2643 79.2%	9 0.3%	2416 72.4%	153 4.6%	867 26.0%	1575 47.2%	260 7.8%	2190 65.6%	92 2.8%	2341 70.1%
2019	3040	2571 84.6%	2409 79.2%	18 0.6%	2135 70.2%	137 4.5%	773 25.4%	1381 44.8%	206 6.8%	1939 63.8%		
2020	3123	2710 86.8%	2490 79.7%	12 0.4%	2279 73.0%	126 4.0%	745 23.9%	1534 49.1%				
2021	3601	3126 86.8%	2897 80.4%	7 0.2%	2642 73.4%	157 4.4%						
2022	4063	3554 87.5%	3288 80.9%	15 0.4%								
2023	4094	3593 87.8%										

Cohort: first-time college, full-time degree seeking undergraduates admitted for fall term or preceding summer term.

First-time: never matriculated as degree-seeking students at another college or university.

Full-time: enrolled in 12 or more credit hours in first fall term.

Retained: enrolled in a subsequent fall term but not yet graduated.

Graduated: received first bachelor's degree by the summer before the given following fall term.

Example, 6 year graduation counts degrees earned up to the summer before the seventh fall term.