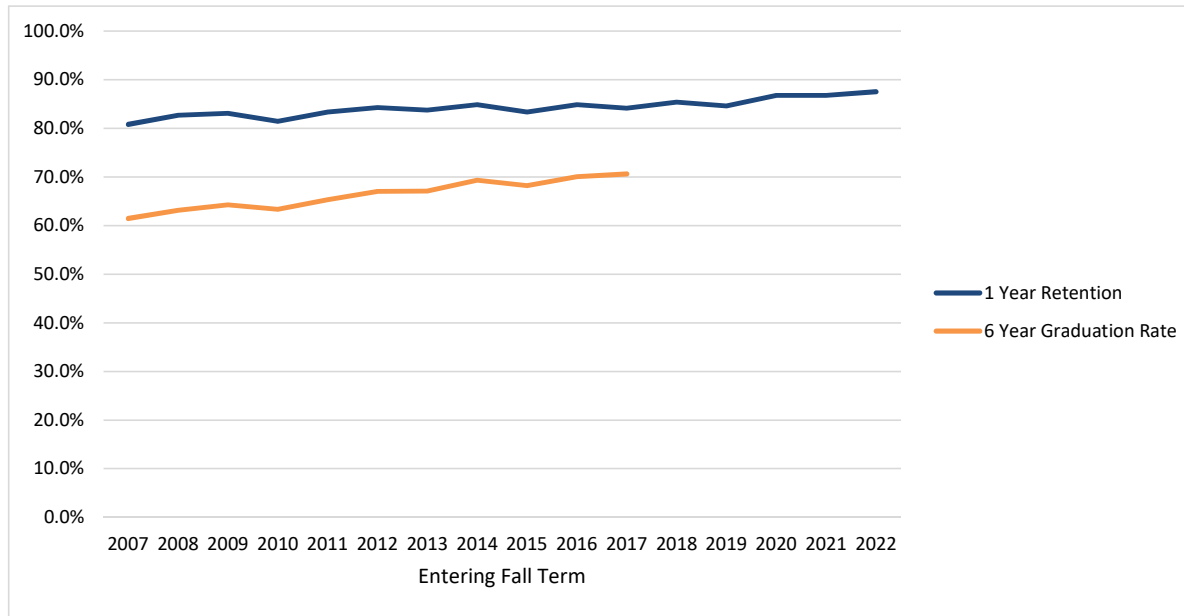


Retention and Graduation Rates of First-time, Full-time Degree Seeking Freshmen

OSU Total



Entering Fall Term	2007	2008	2009	2010	2011	2012	2013	2014	2015	2016	2017	2018	2019	2020	2021	2022
Cohort	2972	3003	3314	3480	3335	3321	3553	3449	3338	3521	3418	3339	3040	3123	3601	4063
1 Year Retention	80.8%	82.7%	83.1%	81.5%	83.4%	84.3%	83.8%	84.9%	83.4%	84.8%	84.2%	85.4%	84.6%	86.8%	86.8%	87.5%
6 Year Graduation Rate	61.4%	63.1%	64.3%	63.3%	65.3%	67.0%	67.1%	69.3%	68.2%	70.0%	70.6%					

Cohort: first-time college, full-time degree seeking undergraduates admitted for fall term or preceding summer term.

First-time: never matriculated as degree-seeking students at another college or university.

Full-time: enrolled in 12 or more credit hours in first fall term.

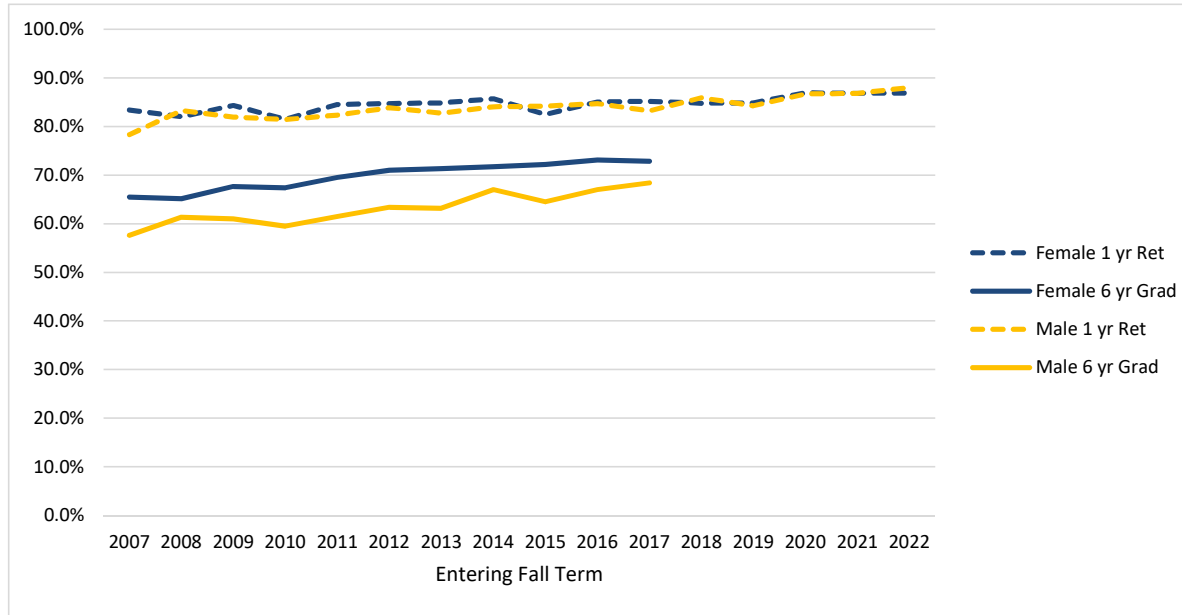
Retained: enrolled in a subsequent fall term but not yet graduated.

Graduated: received first bachelor's degree by the summer before the given following fall term.

Example, 6 year graduation counts degrees earned up to the summer before the seventh fall term.

Retention and Graduation Rates of First-time, Full-time Degree Seeking Freshmen

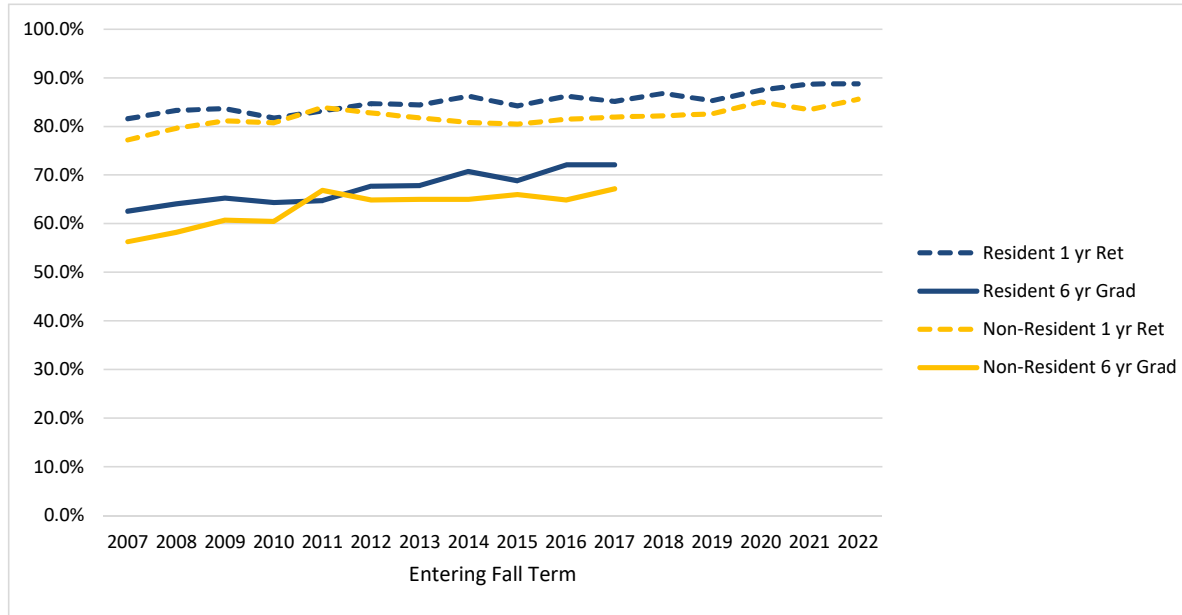
Female/ Male



Entering Fall Term	2007	2008	2009	2010	2011	2012	2013	2014	2015	2016	2017	2018	2019	2020	2021	2022
Female	1436	1420	1621	1679	1599	1580	1706	1689	1596	1734	1659	1623	1483	1512	1746	2035
Female 1 yr Ret	83.4%	82.0%	84.3%	81.5%	84.5%	84.7%	84.9%	85.7%	82.5%	85.1%	85.2%	84.8%	84.8%	86.9%	86.8%	86.9%
Female 6 yr Grad	65.5%	65.1%	67.7%	67.4%	69.5%	71.0%	71.3%	71.8%	72.2%	73.1%	72.9%					
Male	1536	1583	1693	1801	1736	1741	1847	1760	1742	1787	1759	1716	1557	1611	1856	2028
Male 1 yr Ret	78.3%	83.3%	81.9%	81.5%	82.3%	83.9%	82.7%	84.0%	84.2%	84.7%	83.2%	85.9%	84.3%	86.7%	86.9%	88.0%
Male 6 yr Grad	57.6%	61.3%	61.0%	59.5%	61.5%	63.4%	63.2%	67.0%	64.5%	67.0%	68.4%					

Retention and Graduation Rates of First-time, Full-time Degree Seeking Freshmen

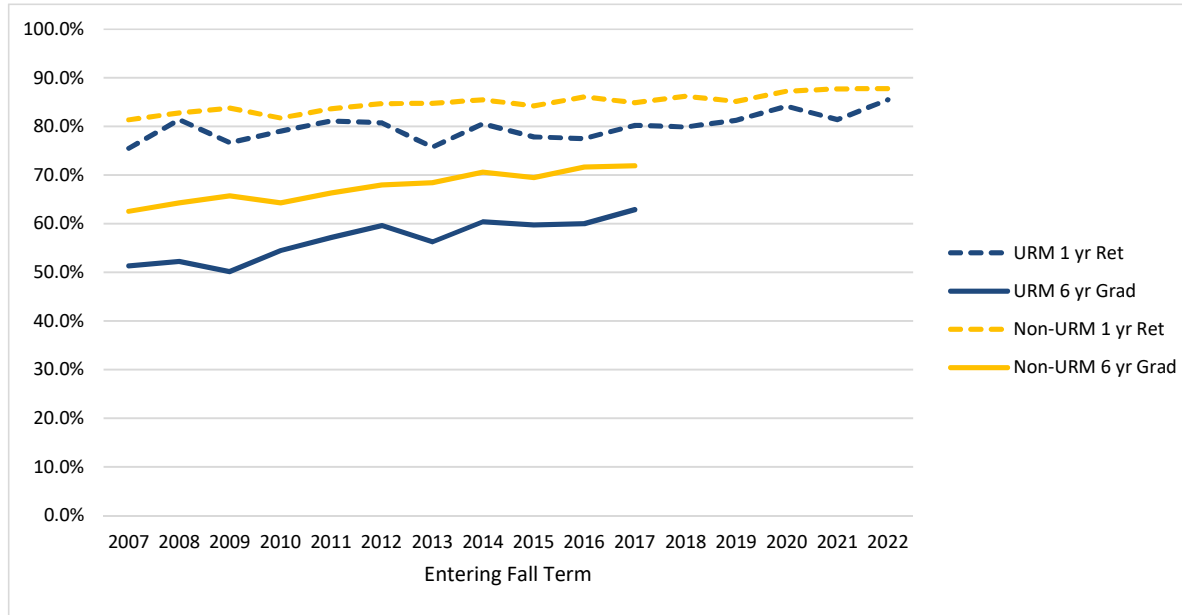
Oregon Resident/ Non-Resident



Entering Fall Term	2007	2008	2009	2010	2011	2012	2013	2014	2015	2016	2017	2018	2019	2020	2021	2022
Resident	2432	2493	2588	2551	2459	2489	2633	2588	2544	2514	2404	2330	2254	2234	2283	2353
Resident 1 yr Ret	81.6%	83.3%	83.7%	81.7%	83.2%	84.7%	84.5%	86.2%	84.3%	86.2%	85.1%	86.8%	85.3%	87.5%	88.7%	88.8%
Resident 6 yr Grad	62.6%	64.1%	65.3%	64.4%	64.8%	67.7%	67.8%	70.7%	68.9%	72.1%	72.1%					
Non-Resident	540	510	726	929	876	832	920	861	794	1007	1014	1009	786	889	1318	1710
Non-Resident 1 yr Ret	77.2%	79.6%	81.1%	80.7%	83.9%	82.8%	81.7%	80.8%	80.5%	81.5%	82.0%	82.2%	82.6%	85.0%	83.5%	85.6%
Non-Resident 6 yr Grad	56.3%	58.2%	60.7%	60.5%	66.9%	64.9%	65.0%	65.0%	66.0%	64.9%	67.2%					

Retention and Graduation Rates of First-time, Full-time Degree Seeking Freshmen

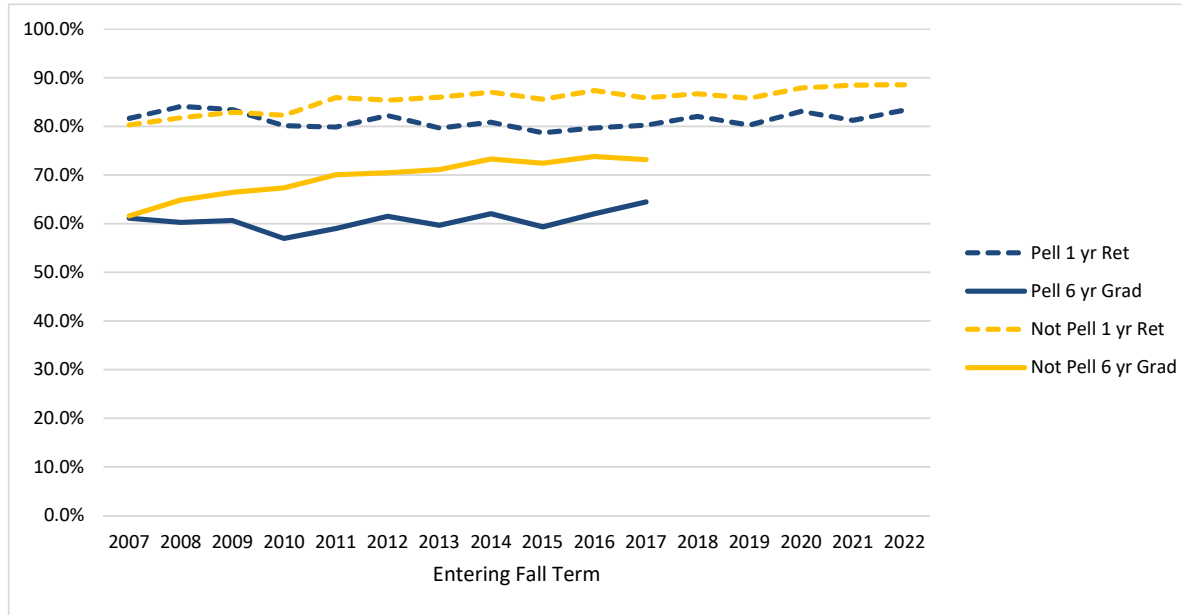
Underrepresented Ethnic Group (African American, American Indian/Alaska Native, Hispanic, Native Hawaiian/Pacific Islander)/ Non-URM



Entering Fall Term	2007	2008	2009	2010	2011	2012	2013	2014	2015	2016	2017	2018	2019	2020	2021	2022
URM	294	285	309	334	355	369	400	437	452	490	480	433	486	546	533	588
URM 1 yr Ret	75.5%	81.4%	76.7%	79.0%	81.1%	80.8%	75.8%	80.5%	77.9%	77.6%	80.2%	79.9%	81.3%	84.2%	81.4%	85.5%
URM 6 yr Grad	51.4%	52.3%	50.2%	54.5%	57.2%	59.6%	56.3%	60.4%	59.7%	60.0%	62.9%					
Non-URM	2678	2718	3005	3146	2980	2952	3153	3012	2886	3031	2938	2906	2554	2577	3068	3475
Non-URM 1 yr Ret	81.4%	82.8%	83.8%	81.7%	83.6%	84.7%	84.8%	85.5%	84.2%	86.1%	84.9%	86.2%	85.2%	87.3%	87.7%	87.8%
Non-URM 6 yr Grad	62.5%	64.3%	65.7%	64.3%	66.3%	68.0%	68.5%	70.6%	69.5%	71.7%	71.9%					

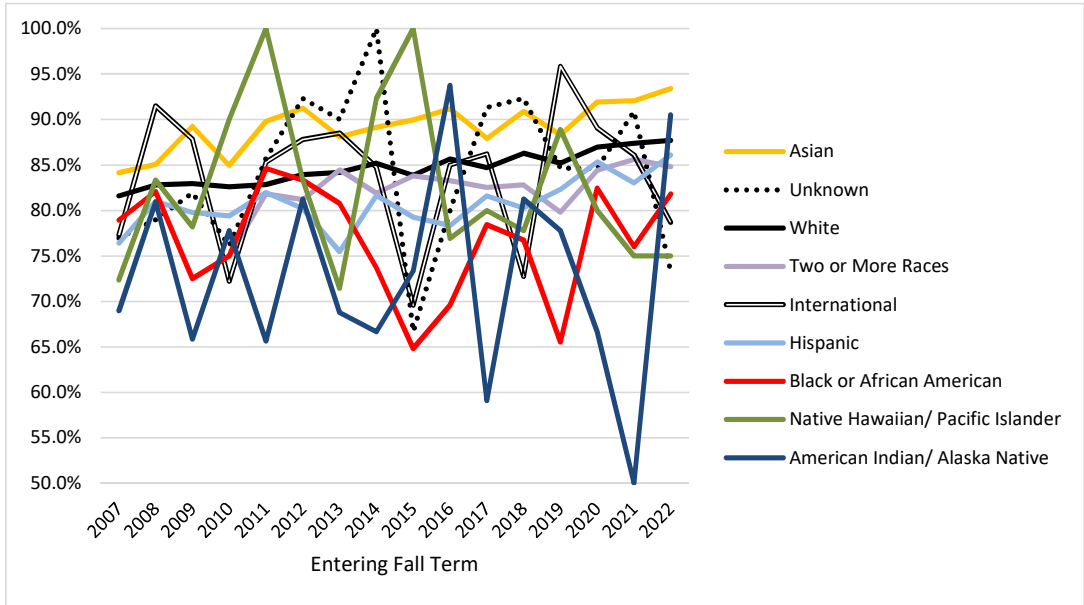
Retention and Graduation Rates of First-time, Full-time Degree Seeking Freshmen

Pell/ Not-Pell



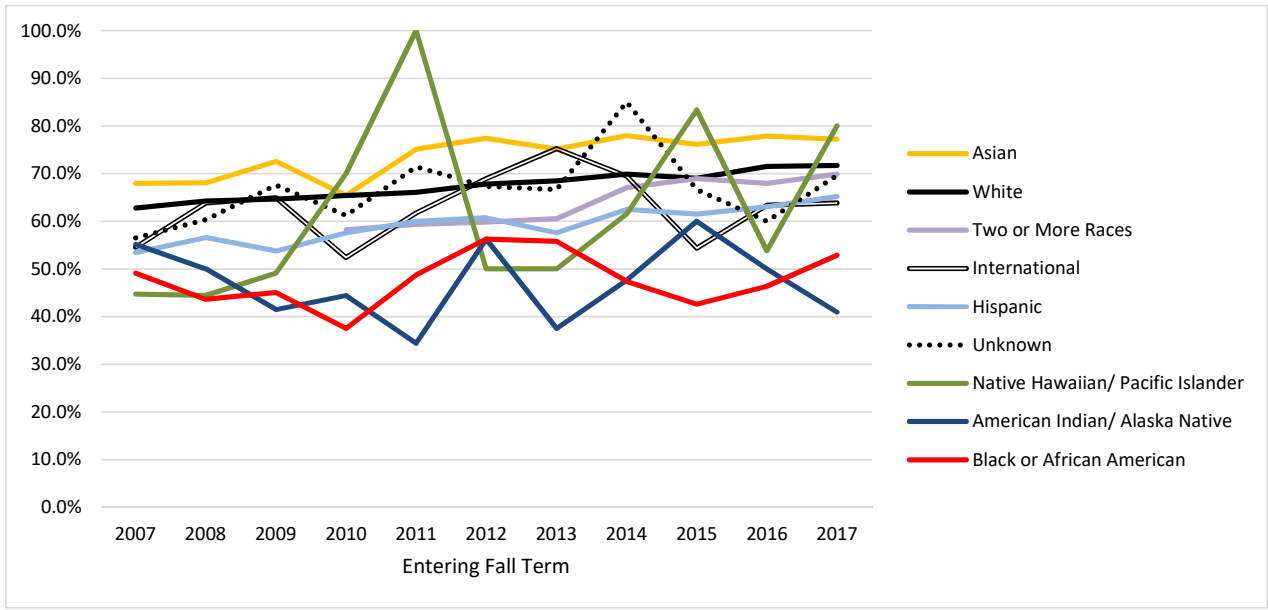
Entering Fall Term	2007	2008	2009	2010	2011	2012	2013	2014	2015	2016	2017	2018	2019	2020	2021	2022
Pell	1047	1127	1256	1348	1422	1278	1254	1222	1090	1139	1015	948	676	758	821	860
Pell 1 yr Ret	81.7%	84.1%	83.4%	80.1%	79.9%	82.2%	79.7%	80.9%	78.7%	79.7%	80.3%	82.1%	80.3%	83.1%	81.2%	83.4%
Pell 6 yr Grad	61.1%	60.2%	60.7%	57.0%	59.0%	61.5%	59.6%	62.0%	59.4%	62.1%	64.5%					
Not Pell	1925	1876	2058	2132	1913	2043	2299	2227	2248	2382	2403	2391	2364	2365	2780	3203
Not Pell 1 yr Ret	80.3%	81.8%	82.9%	82.3%	85.9%	85.4%	86.0%	87.1%	85.6%	87.4%	85.9%	86.7%	85.8%	87.9%	88.5%	88.6%
Not Pell 6 yr Grad	61.6%	64.9%	66.5%	67.4%	70.0%	70.5%	71.2%	73.3%	72.5%	73.8%	73.2%					

Ethnic Group 1 Year Retention Rates



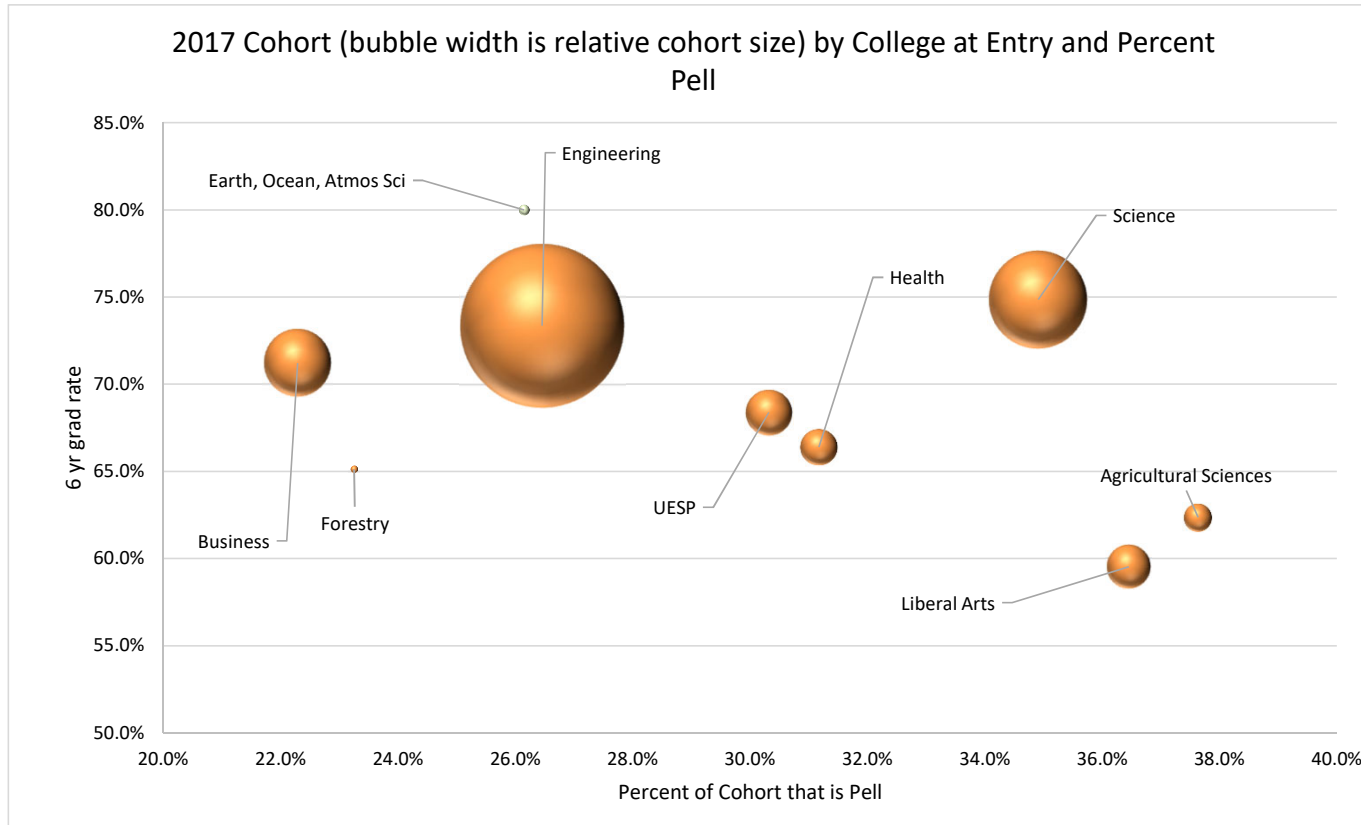
Entering Fall Term	2007	2008	2009	2010	2011	2012	2013	2014	2015	2016	2017	2018	2019	2020	2021	2022
American Indian/ Alaska Native	29 69.0%	42 81.0%	41 65.9%	27 77.8%	32 65.6%	16 81.3%	16 68.8%	21 66.7%	15 73.3%	16 93.8%	22 59.1%	16 81.3%	18 77.8%	18 66.7%	12 50.0%	21 90.5%
Asian	290 84.1%	288 85.1%	353 89.2%	266 85.0%	293 89.8%	274 91.2%	285 88.1%	340 89.1%	318 89.9%	352 91.2%	289 87.9%	346 90.9%	282 88.3%	272 91.9%	340 92.1%	412 93.4%
Black or African American	57 78.9%	39 82.1%	40 72.5%	40 75.0%	39 84.6%	48 83.3%	52 80.8%	38 73.7%	54 64.8%	69 69.6%	51 78.4%	43 76.7%	29 65.5%	57 82.5%	50 76.0%	66 81.8%
Hispanic	161 76.4%	168 81.0%	173 79.8%	257 79.4%	277 81.9%	293 80.2%	318 75.5%	365 81.6%	371 79.2%	392 78.3%	402 81.6%	365 80.3%	430 82.3%	456 85.3%	459 83.0%	489 86.1%
Native Hawaiian/ Pacific Islander	47 72.3%	36 83.3%	55 78.2%	10 90.0%	7 100.0%	12 83.3%	14 71.4%	13 92.3%	12 100.0%	13 76.9%	5 80.0%	9 77.8%	9 88.9%	15 80.0%	12 75.0%	12 75.0%
Two or More Races				220 75.0%	236 81.8%	266 81.2%	309 84.5%	282 81.9%	296 83.8%	287 83.3%	309 82.5%	308 82.8%	248 79.8%	257 84.4%	278 85.6%	343 84.8%
Unknown	269 77.0%	252 79.0%	188 81.9%	67 76.1%	21 85.7%	52 92.3%	30 90.0%	20 100.0%	15 66.7%	20 80.0%	23 91.3%	13 92.3%	13 84.6%	13 84.6%	33 90.9%	30 73.3%
White	2075 81.6%	2131 82.8%	2390 82.9%	2467 82.6%	2328 82.8%	2270 83.9%	2416 84.2%	2311 85.2%	2211 83.9%	2312 85.7%	2259 84.7%	2184 86.3%	1963 85.2%	1971 87.0%	2338 87.4%	2615 87.7%
International	44 77.3%	47 91.5%	74 87.8%	126 72.2%	102 85.3%	90 87.8%	113 88.5%	59 84.7%	46 69.6%	60 85.0%	58 86.2%	55 72.7%	48 95.8%	64 89.1%	79 86.1%	75 78.7%

Ethnic Group 6 Year Graduation Rates



Entering Fall Term	2007	2008	2009	2010	2011	2012	2013	2014	2015	2016	2017	2018	2019	2020	2021	2022
American Indian/ Alaska Native	29	42	41	27	32	16	16	21	15	16	22	16	18	18	12	21
Asian	290	288	353	266	293	274	285	340	318	352	289	347	282	272	340	412
Black or African American	57	39	40	40	39	48	52	38	54	69	51	43	29	57	50	66
Hispanic	161	168	173	257	277	293	318	365	371	392	402	365	430	457	459	489
Native Hawaiian/ Pacific Islander	47	36	55	10	7	12	14	13	12	13	5	9	9	15	12	12
Two or More Races				220	236	266	309	282	296	287	309	308	249	257	278	343
Unknown	269	252	188	67	21	52	30	20	15	20	23	13	13	13	33	30
White	2075	2131	2390	2467	2328	2270	2416	2311	2211	2312	2259	2185	1964	1972	2338	2615
International	44	47	74	126	102	90	113	59	46	60	58	55	48	64	79	75

2017 College Cohort 6 yr Grad Rate by Percent Pell



Pell percent provides a partial explanation for differences in college 6 year graduation rates, although many factors affect these rates. Pell students have lower graduation rates than non-Pell students, we expect lower graduation rates in colleges with higher Pell percent. However, Pell status is a function of time and federal policies. Number of students with Pell has been dropping and there has been a re-distribution of Pell percent across colleges, compared to the prior year cohort.

For the 2017 cohort, most colleges performed above expectation for Pell level. The following were particularly above expectation:

Science, UESP, Health, Agricultural Sciences and Engineering.

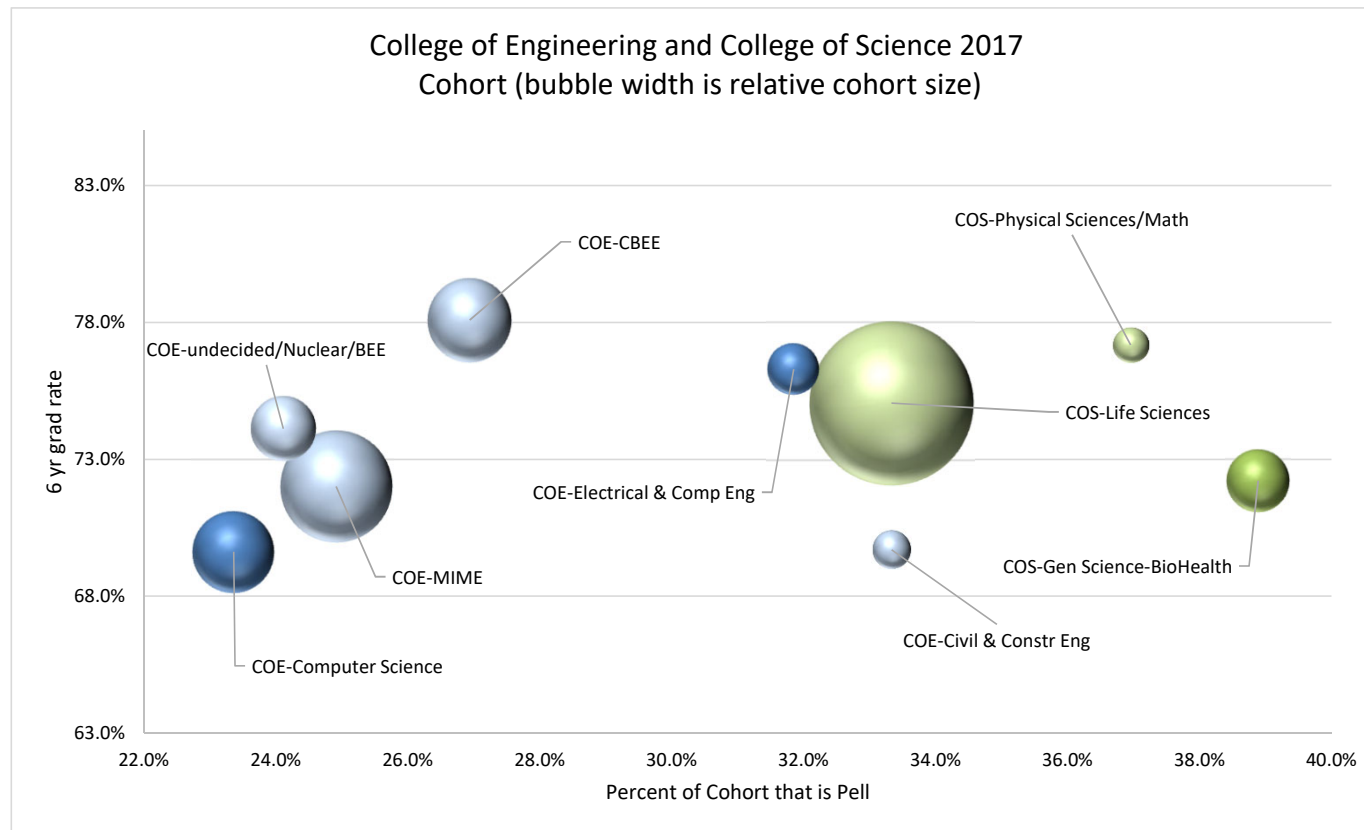
Liberal Arts and Agricultural Sciences had the lowest 6 year graduation rates but also the highest proportion of Pell students.

Science had the highest graduation rate while also having a relatively high proportion of Pell students.

Engineering's rise in about 5 percentage points from the prior year fueled the overall OSU record high graduation rate.

Bubble widths provide the relative proportion of entering college cohorts. The next chart breaks up two of the larger cohorts into discipline groups.

2017 College of Engineering & College of Science Cohort 6 yr Grad Rate by Percent Pell



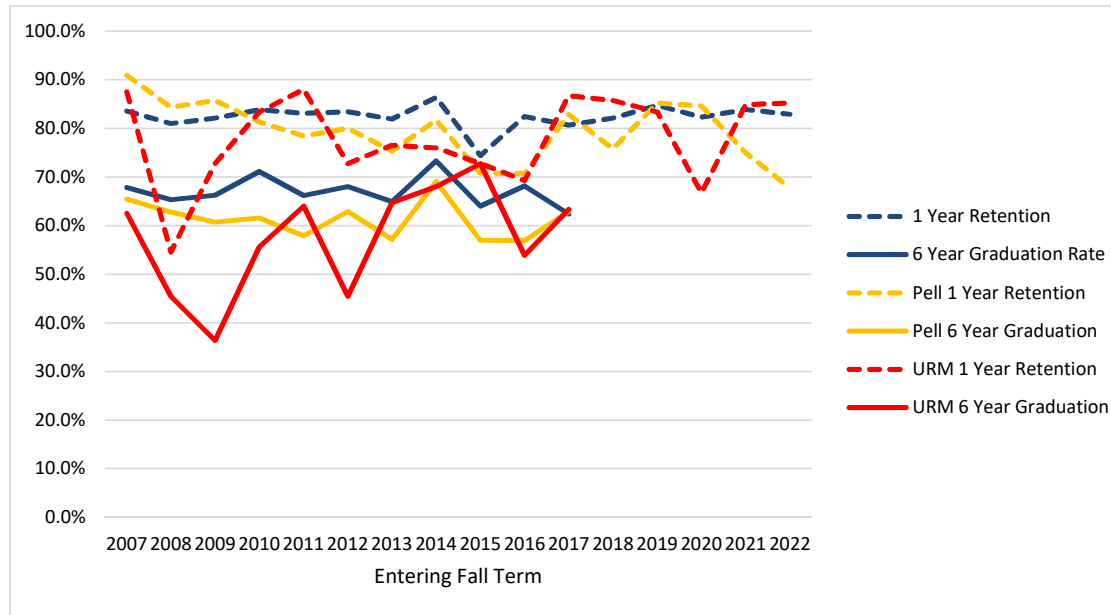
Electrical Engineering increased by 8 percentage points and MIME by 5. Undecided/Nuclear/BEE grew by 3 points. Civil Engineering and CBEE grew by 1 percent. Computer Science dropped by 1 percent. Civil Engineering has a relatively high graduation rates despite having the largest proportion of Pell students.

Life Sciences grew 2 percent while Biohealth Sciences dipped about 2 %. Physical Science/Math saw about a 10% increase.

CBEE has the highest proportion of females (43%) among Engineering areas which are typically about 13%. This may partially explain higher graduation rates as females tend to graduate at higher rates. This pattern also occurs in Science where areas with higher proportions of females have high graduation rates: General/BioHealth Science and Life Science are 72% female, and Physical Science/Math is 45% female.

Retention and Graduation Rates by College of Entering Primary Major

Agricultural Sciences

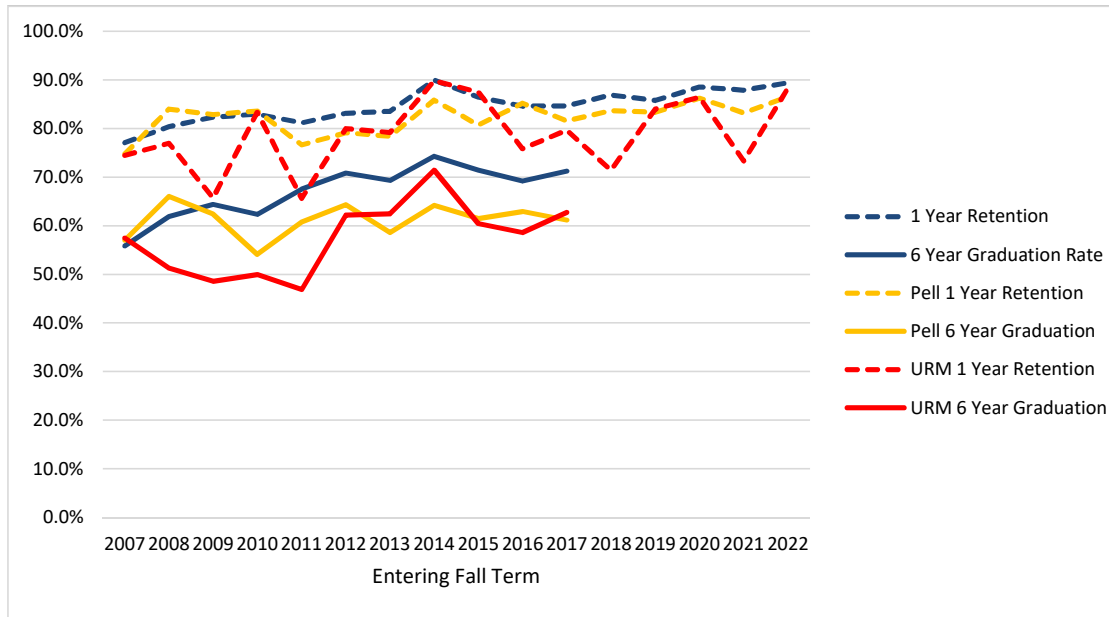


Entering Fall Term	2007	2008	2009	2010	2011	2012	2013	2014	2015	2016	2017	2018	2019	2020	2021	2022
Cohort	146	147	151	204	213	175	188	161	164	182	186	162	164	147	161	210
1 Year Retention	83.6%	81.0%	82.1%	83.8%	83.1%	83.4%	81.9%	86.3%	74.4%	82.4%	80.6%	82.1%	84.8%	82.3%	83.9%	82.9%
6 Year Graduation Rate	67.8%	65.3%	66.2%	71.1%	66.2%	68.0%	64.9%	73.3%	64.0%	68.1%	62.4%					
Pell	55	51	56	91	102	70	77	71	65	58	70	62	54	39	44	62
Pell 1 Year Retention	90.9%	84.3%	85.7%	81.3%	78.4%	80.0%	75.3%	81.7%	70.8%	70.7%	82.9%	75.8%	85.2%	84.6%	75.0%	67.7%
Pell 6 Year Graduation	65.5%	62.7%	60.7%	61.5%	57.8%	62.9%	57.1%	69.0%	56.9%	56.9%	62.9%					
URM	8	11	11	18	25	11	17	25	22	26	30	28	30	24	33	27
URM 1 Year Retention	87.5%	54.5%	72.7%	83.3%	88.0%	72.7%	76.5%	76.0%	72.7%	69.2%	86.7%	85.7%	83.3%	66.7%	84.8%	85.2%
URM 6 Year Graduation	62.5%	45.5%	36.4%	55.6%	64.0%	45.5%	64.7%	68.0%	72.7%	53.8%	63.3%					

- Retention and Graduation are to ANY major - not necessarily the primary major at entry.
- Pell is based on having a Pell grant at any point as an undergraduate, not just in term of entry.
- URM is standard federal Underrepresented Minority definition: American Indian/Alaska Native, Black or African American, Hispanic, Native Hawaiian/Pacific Islander

Retention and Graduation Rates by College of Entering Primary Major

Business

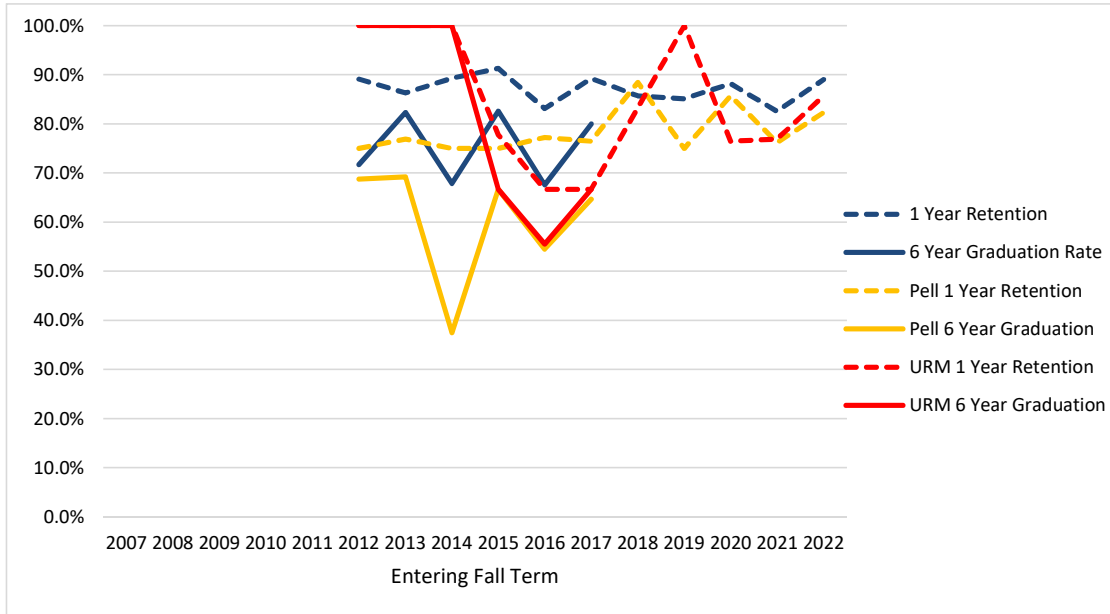


Entering Fall Term	2007	2008	2009	2010	2011	2012	2013	2014	2015	2016	2017	2018	2019	2020	2021	2022
Cohort	410	357	379	364	308	374	401	408	427	480	462	428	359	402	494	564
1 Year Retention	77.1%	80.4%	82.3%	83.0%	81.2%	83.2%	83.5%	90.0%	86.4%	84.6%	84.6%	86.9%	85.8%	88.6%	87.9%	89.4%
6 Year Graduation Rate	55.9%	61.9%	64.4%	62.4%	67.5%	70.9%	69.3%	74.3%	71.4%	69.2%	71.2%					
Pell	107	106	117	122	107	115	111	106	109	135	103	104	54	87	107	126
Pell 1 Year Retention	74.8%	84.0%	82.9%	83.6%	76.6%	79.1%	78.4%	85.8%	80.7%	85.2%	81.6%	83.7%	83.3%	86.2%	83.2%	86.5%
Pell 6 Year Graduation	57.0%	66.0%	62.4%	54.1%	60.7%	64.3%	58.6%	64.2%	61.5%	63.0%	61.2%					
URM	47	39	35	30	32	45	48	49	48	58	59	42	50	81	75	94
URM 1 Year Retention	74.5%	76.9%	65.7%	83.3%	65.6%	80.0%	79.2%	89.8%	87.5%	75.9%	79.7%	71.4%	84.0%	86.4%	73.3%	88.3%
URM 6 Year Graduation	57.4%	51.3%	48.6%	50.0%	46.9%	62.2%	62.5%	71.4%	60.4%	58.6%	62.7%					

- Retention and Graduation are to ANY major - not necessarily the primary major at entry.
- Pell is based on having a Pell grant at any point as an undergraduate, not just in term of entry.
- URM is standard federal Underrepresented Minority definition: American Indian/Alaska Native, Black or African American, Hispanic, Native Hawaiian/Pacific Islander

Retention and Graduation Rates by College of Entering Primary Major

Earth, Ocean, and Atmospheric Sciences

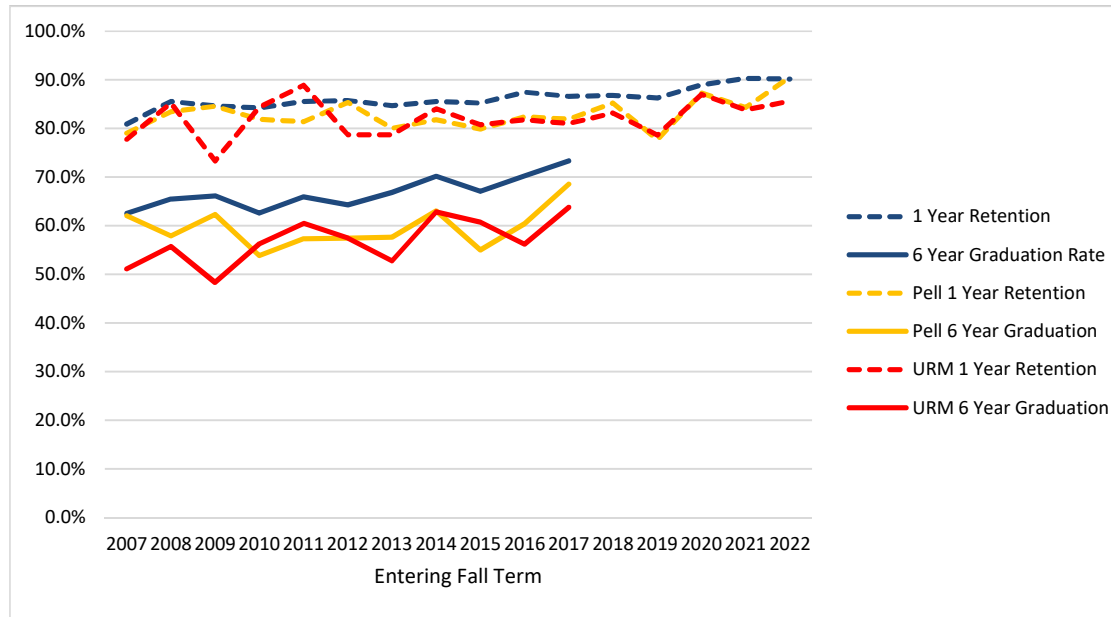


Entering Fall Term	2007	2008	2009	2010	2011	2012	2013	2014	2015	2016	2017	2018	2019	2020	2021	2022
Cohort						46	51	28	46	71	65	91	74	93	109	173
1 Year Retention						89.1%	86.3%	89.3%	91.3%	83.1%	89.2%	85.7%	85.1%	88.2%	82.6%	89.0%
6 Year Graduation Rate						71.7%	82.4%	67.9%	82.6%	67.6%	80.0%					
Pell						16	13	8	12	22	17	26	12	14	21	17
Pell 1 Year Retention						75.0%	76.9%	75.0%	75.0%	77.3%	76.5%	88.5%	75.0%	85.7%	76.2%	82.4%
Pell 6 Year Graduation						68.8%	69.2%	37.5%	66.7%	54.5%	64.7%					
URM						3	1	2	9	9	9	12	10	17	13	21
URM 1 Year Retention						100.0%	100.0%	100.0%	77.8%	66.7%	66.7%	83.3%	100.0%	76.5%	76.9%	85.7%
URM 6 Year Graduation						100.0%	100.0%	100.0%	66.7%	55.6%	66.7%					

- Retention and Graduation are to ANY major - not necessarily the primary major at entry.
- Pell is based on having a Pell grant at any point as an undergraduate, not just in term of entry.
- URM is standard federal Underrepresented Minority definition: American Indian/Alaska Native, Black or African American, Hispanic, Native Hawaiian/Pacific Islander

Retention and Graduation Rates by College of Entering Primary Major

Engineering

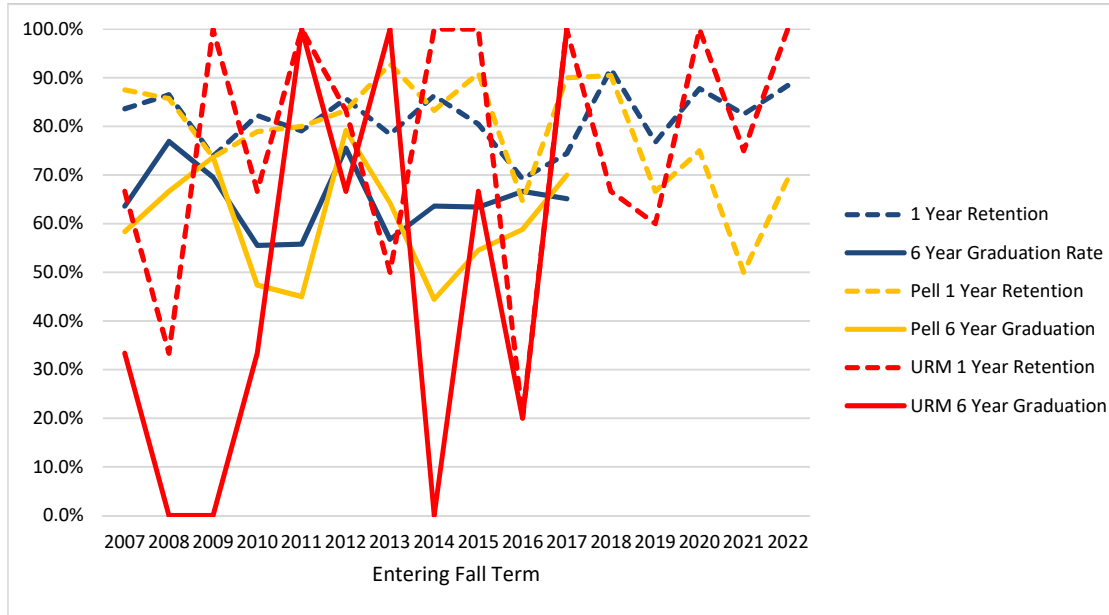


Entering Fall Term	2007	2008	2009	2010	2011	2012	2013	2014	2015	2016	2017	2018	2019	2020	2021	2022
Cohort	702	809	845	938	927	1051	1174	1123	1111	1125	1130	1122	1006	1091	1135	1324
1 Year Retention	80.9%	85.5%	84.6%	84.2%	85.5%	85.7%	84.7%	85.6%	85.2%	87.5%	86.6%	86.8%	86.3%	89.0%	90.3%	90.2%
6 Year Graduation Rate	62.5%	65.5%	66.2%	62.6%	65.9%	64.3%	66.9%	70.2%	67.1%	70.2%	73.4%					
Pell	253	278	337	336	361	362	366	357	338	341	299	277	211	244	217	232
Pell 1 Year Retention	79.1%	83.5%	84.6%	81.8%	81.4%	85.4%	80.1%	81.8%	79.9%	82.4%	81.9%	85.2%	77.7%	87.3%	84.3%	90.5%
Pell 6 Year Graduation	62.1%	57.9%	62.3%	53.9%	57.3%	57.5%	57.7%	63.0%	55.0%	60.4%	68.6%					
URM	45	61	60	64	81	94	108	113	135	121	116	143	145	169	161	160
URM 1 Year Retention	77.8%	85.2%	73.3%	84.4%	88.9%	78.7%	78.7%	84.1%	80.7%	81.8%	81.0%	83.2%	78.6%	87.0%	83.9%	85.6%
URM 6 Year Graduation	51.1%	55.7%	48.3%	56.3%	60.5%	57.4%	52.8%	62.8%	60.7%	56.2%	63.8%					

- Retention and Graduation are to ANY major - not necessarily the primary major at entry.
- Pell is based on having a Pell grant at any point as an undergraduate, not just in term of entry.
- URM is standard federal Underrepresented Minority definition: American Indian/Alaska Native, Black or African American, Hispanic, Native Hawaiian/Pacific Islander

Retention and Graduation Rates by College of Entering Primary Major

Forestry

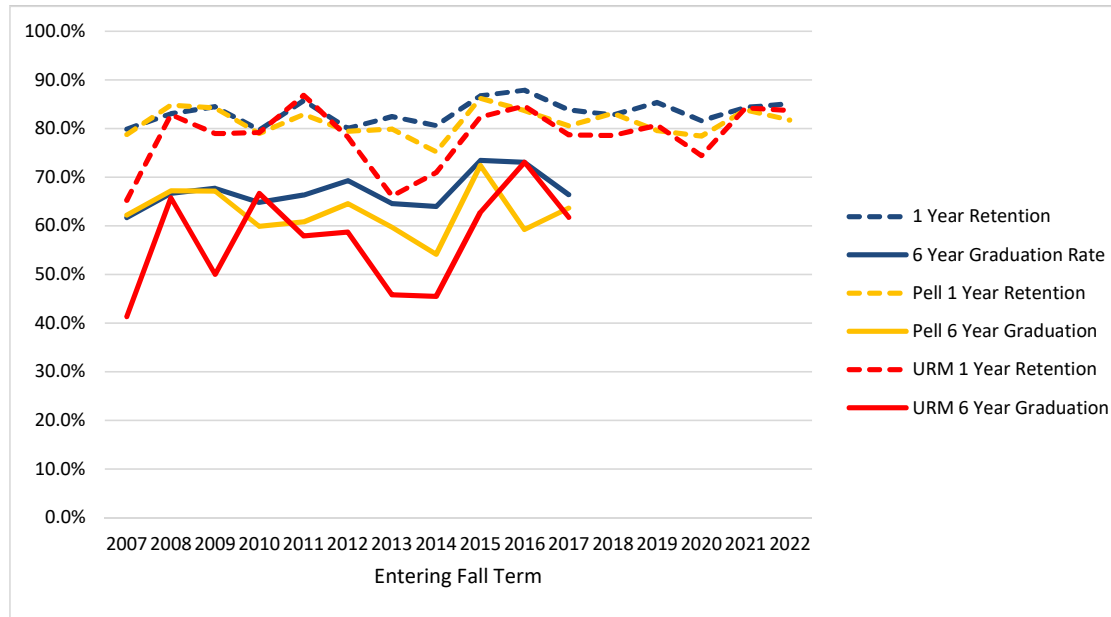


Entering Fall Term	2007	2008	2009	2010	2011	2012	2013	2014	2015	2016	2017	2018	2019	2020	2021	2022
Cohort	55	52	46	45	43	49	37	44	41	39	43	49	56	41	63	78
1 Year Retention	83.6%	86.5%	73.9%	82.2%	79.1%	85.7%	78.4%	86.4%	80.5%	69.2%	74.4%	91.8%	76.8%	87.8%	82.5%	88.5%
6 Year Graduation Rate	63.6%	76.9%	69.6%	55.6%	55.8%	75.5%	56.8%	63.6%	63.4%	66.7%	65.1%					
Pell	24	21	19	19	20	24	14	18	11	17	10	21	12	8	12	13
Pell 1 Year Retention	87.5%	85.7%	73.7%	78.9%	80.0%	83.3%	92.9%	83.3%	90.9%	64.7%	90.0%	90.5%	66.7%	75.0%	50.0%	69.2%
Pell 6 Year Graduation	58.3%	66.7%	73.7%	47.4%	45.0%	79.2%	64.3%	44.4%	54.5%	58.8%	70.0%					
URM	3	3	1	3	1	6	2	1	6	5	3	6	5	7	4	3
URM 1 Year Retention	66.7%	33.3%	100.0%	66.7%	100.0%	83.3%	50.0%	100.0%	100.0%	20.0%	100.0%	66.7%	60.0%	100.0%	75.0%	100.0%
URM 6 Year Graduation	33.3%	0.0%	0.0%	33.3%	100.0%	66.7%	100.0%	0.0%	66.7%	20.0%	100.0%					

- Retention and Graduation are to ANY major - not necessarily the primary major at entry.
- Pell is based on having a Pell grant at any point as an undergraduate, not just in term of entry.
- URM is standard federal Underrepresented Minority definition: American Indian/Alaska Native, Black or African American, Hispanic, Native Hawaiian/Pacific Islander

Retention and Graduation Rates by College of Entering Primary Major

Health (includes those entering in Public Health & Human Sciences)

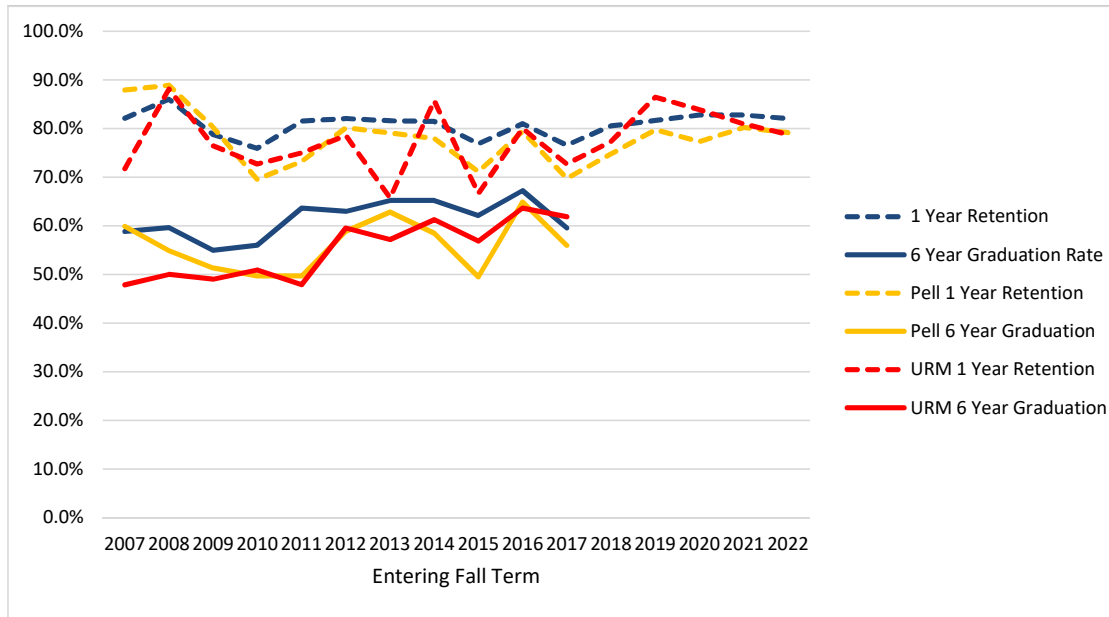


Entering Fall Term	2007	2008	2009	2010	2011	2012	2013	2014	2015	2016	2017	2018	2019	2020	2021	2022
Cohort	378	318	406	418	407	355	364	330	286	297	247	226	191	190	243	255
1 Year Retention	79.9%	83.0%	84.5%	79.7%	85.7%	80.0%	82.4%	80.6%	86.7%	87.9%	83.8%	82.7%	85.3%	81.6%	84.4%	85.1%
6 Year Graduation Rate	61.6%	66.7%	67.7%	64.8%	66.3%	69.3%	64.6%	63.9%	73.4%	73.1%	66.4%					
Pell	127	125	146	157	181	141	134	133	116	98	77	65	44	51	68	71
Pell 1 Year Retention	78.7%	84.8%	84.2%	79.0%	82.9%	79.4%	79.9%	75.2%	86.2%	83.7%	80.5%	83.1%	79.5%	78.4%	83.8%	81.7%
Pell 6 Year Graduation	62.2%	67.2%	67.1%	59.9%	60.8%	64.5%	59.7%	54.1%	72.4%	59.2%	63.6%					
URM	46	35	38	48	38	46	59	55	51	52	47	28	31	43	38	49
URM 1 Year Retention	65.2%	82.9%	78.9%	79.2%	86.8%	78.3%	66.1%	70.9%	82.4%	84.6%	78.7%	78.6%	80.6%	74.4%	84.2%	83.7%
URM 6 Year Graduation	41.3%	65.7%	50.0%	66.7%	57.9%	58.7%	45.8%	45.5%	62.7%	73.1%	61.7%					

- Retention and Graduation are to ANY major - not necessarily the primary major at entry.
- Pell is based on having a Pell grant at any point as an undergraduate, not just in term of entry.
- URM is standard federal Underrepresented Minority definition: American Indian/Alaska Native, Black or African American, Hispanic, Native Hawaiian/Pacific Islander

Retention and Graduation Rates by College of Entering Primary Major

Liberal Arts

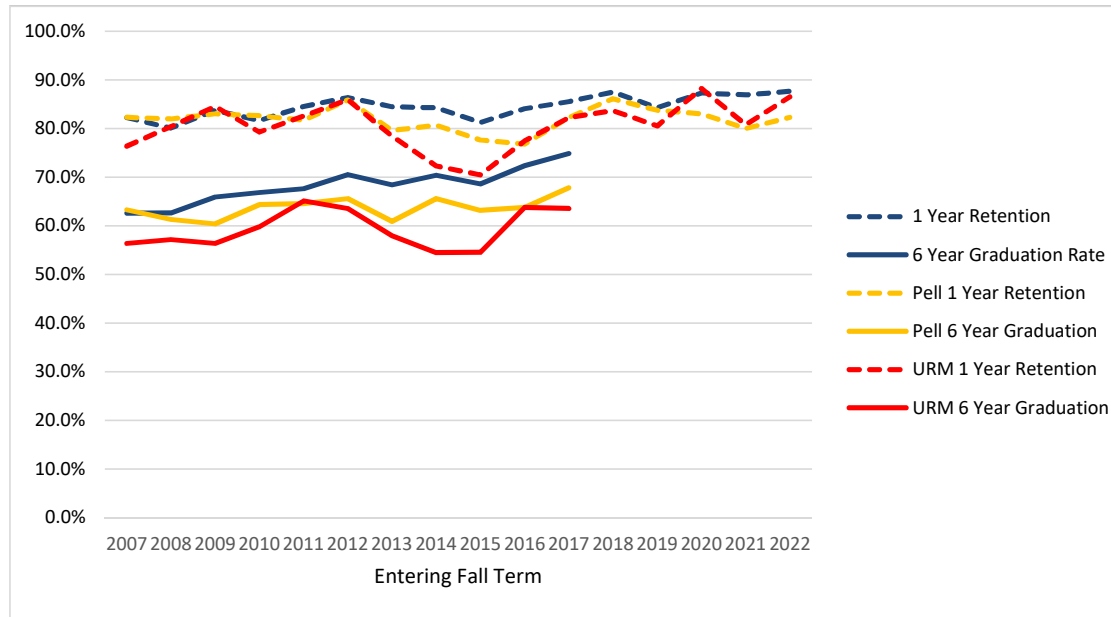


Entering Fall Term	2007	2008	2009	2010	2011	2012	2013	2014	2015	2016	2017	2018	2019	2020	2021	2022
Cohort	352	329	395	386	341	278	336	296	285	363	299	298	321	319	406	496
1 Year Retention	82.1%	86.0%	78.7%	75.9%	81.5%	82.0%	81.5%	81.4%	76.8%	81.0%	76.6%	80.5%	81.6%	82.8%	82.8%	82.1%
6 Year Graduation Rate	58.8%	59.6%	54.9%	56.0%	63.6%	62.9%	65.2%	65.2%	62.1%	67.2%	59.5%					
Pell	132	144	152	151	153	141	129	118	97	131	109	103	84	88	106	120
Pell 1 Year Retention	87.9%	88.9%	80.3%	69.5%	73.2%	80.1%	79.1%	78.0%	71.1%	79.4%	69.7%	74.8%	79.8%	77.3%	80.2%	79.2%
Pell 6 Year Graduation	59.8%	54.9%	51.3%	49.7%	49.7%	58.9%	62.8%	58.5%	49.5%	64.9%	56.0%					
URM	46	42	51	55	48	42	35	49	51	55	55	44	59	62	63	85
URM 1 Year Retention	71.7%	88.1%	76.5%	72.7%	75.0%	78.6%	65.7%	85.7%	66.7%	80.0%	72.7%	77.3%	86.4%	83.9%	81.0%	78.8%
URM 6 Year Graduation	47.8%	50.0%	49.0%	50.9%	47.9%	59.5%	57.1%	61.2%	56.9%	63.6%	61.8%					

- Retention and Graduation are to ANY major - not necessarily the primary major at entry.
- Pell is based on having a Pell grant at any point as an undergraduate, not just in term of entry.
- URM is standard federal Underrepresented Minority definition: American Indian/Alaska Native, Black or African American, Hispanic, Native Hawaiian/Pacific Islander

Retention and Graduation Rates by College of Entering Primary Major

Science

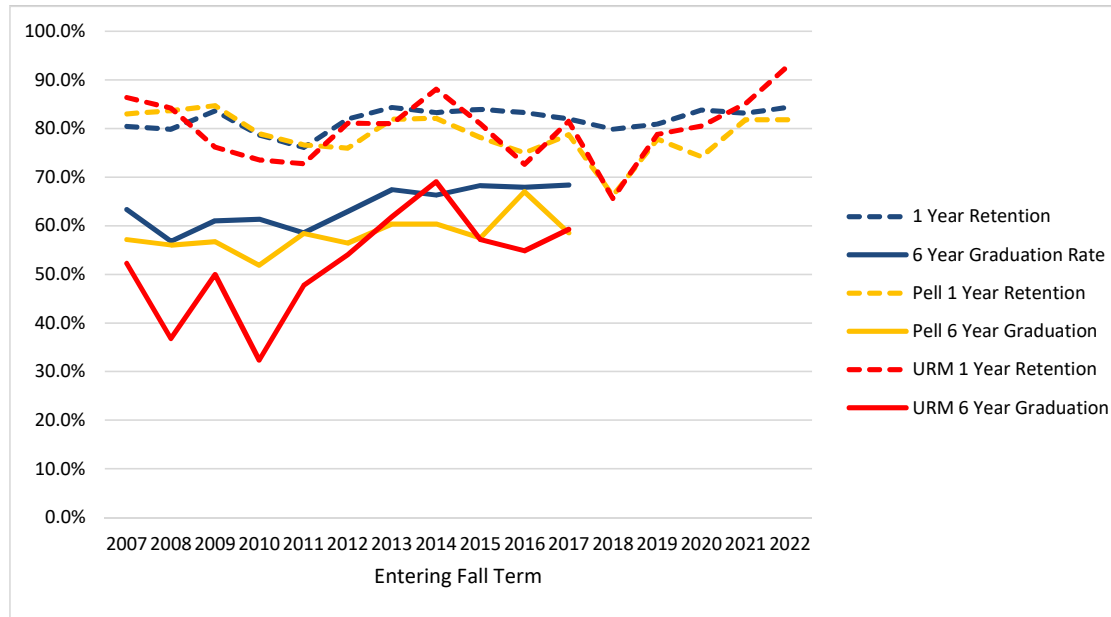


Entering Fall Term	2007	2008	2009	2010	2011	2012	2013	2014	2015	2016	2017	2018	2019	2020	2021	2022
Cohort	607	653	751	778	732	661	677	712	660	677	676	695	649	599	693	712
1 Year Retention	82.2%	80.1%	83.8%	81.6%	84.6%	86.4%	84.5%	84.3%	81.2%	84.0%	85.5%	87.5%	84.3%	87.3%	86.9%	87.6%
6 Year Graduation Rate	62.6%	62.6%	65.9%	66.8%	67.6%	70.5%	68.4%	70.4%	68.6%	72.4%	74.9%					
Pell	237	261	318	339	361	276	294	305	255	237	236	216	160	165	180	175
Pell 1 Year Retention	82.3%	82.0%	83.0%	82.6%	81.7%	85.9%	79.6%	80.7%	77.6%	76.8%	82.2%	86.1%	83.8%	83.0%	80.0%	82.3%
Pell 6 Year Graduation	63.3%	61.3%	60.4%	64.3%	64.5%	65.6%	60.9%	65.6%	63.1%	63.7%	67.8%					
URM	55	56	71	82	86	85	88	101	88	102	107	98	123	102	99	104
URM 1 Year Retention	76.4%	80.4%	84.5%	79.3%	82.6%	85.9%	78.4%	72.3%	70.5%	77.5%	82.2%	83.7%	80.5%	88.2%	80.8%	86.5%
URM 6 Year Graduation	56.4%	57.1%	56.3%	59.8%	65.1%	63.5%	58.0%	54.5%	54.5%	63.7%	63.6%					

- Retention and Graduation are to ANY major - not necessarily the primary major at entry.
- Pell is based on having a Pell grant at any point as an undergraduate, not just in term of entry.
- URM is standard federal Underrepresented Minority definition: American Indian/Alaska Native, Black or African American, Hispanic, Native Hawaiian/Pacific Islander

Retention and Graduation Rates by College of Entering Primary Major

University Exploratory Studies

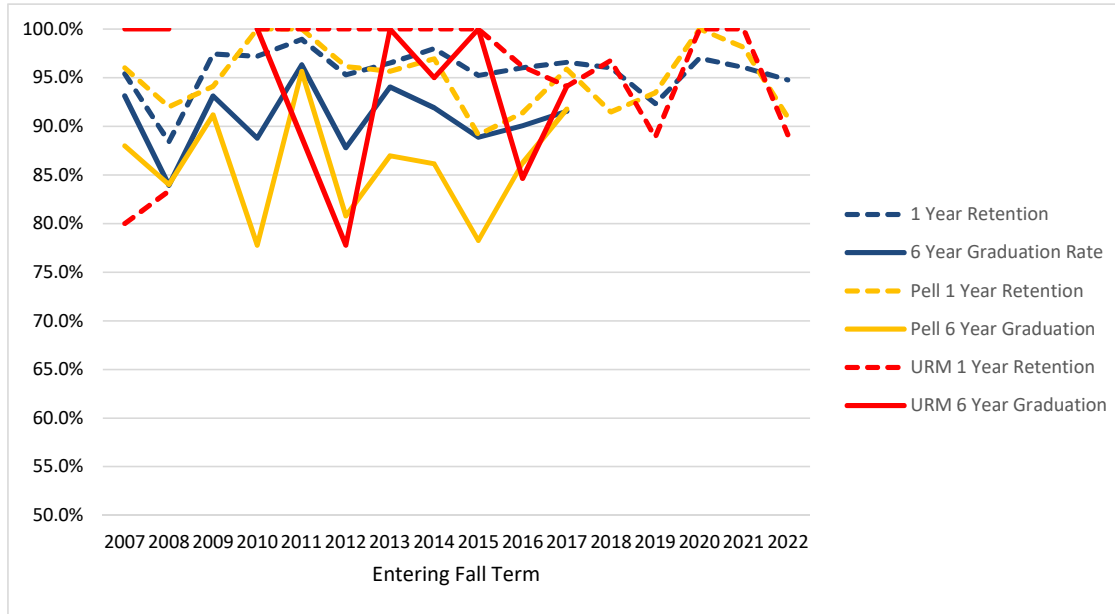


Entering Fall Term	2007	2008	2009	2010	2011	2012	2013	2014	2015	2016	2017	2018	2019	2020	2021	2022
Cohort	322	338	341	347	364	332	325	347	318	287	310	268	220	241	297	250
1 Year Retention	80.4%	79.9%	83.6%	78.7%	76.1%	81.9%	84.3%	83.3%	84.0%	83.3%	81.9%	79.9%	80.9%	83.8%	83.2%	84.4%
6 Year Graduation Rate	63.4%	56.8%	61.0%	61.4%	58.5%	63.0%	67.4%	66.3%	68.2%	67.9%	68.4%					
Pell	112	141	111	133	137	133	116	106	87	100	94	74	45	62	66	44
Pell 1 Year Retention	83.0%	83.7%	84.7%	78.9%	76.6%	75.9%	81.9%	82.1%	78.2%	75.0%	78.7%	66.2%	77.8%	74.2%	81.8%	81.8%
Pell 6 Year Graduation	57.1%	56.0%	56.8%	51.9%	58.4%	56.4%	60.3%	60.4%	57.5%	67.0%	58.5%					
URM	44	38	42	34	44	37	42	42	42	62	54	32	33	41	47	44
URM 1 Year Retention	86.4%	84.2%	76.2%	73.5%	72.7%	81.1%	81.0%	88.1%	81.0%	72.6%	81.5%	65.6%	78.8%	80.5%	85.1%	93.2%
URM 6 Year Graduation	52.3%	36.8%	50.0%	32.4%	47.7%	54.1%	61.9%	69.0%	57.1%	54.8%	59.3%					

- Retention and Graduation are to ANY major - not necessarily the primary major at entry.
- Pell is based on having a Pell grant at any point as an undergraduate, not just in term of entry.
- URM is standard federal Underrepresented Minority definition: American Indian/Alaska Native, Black or African American, Hispanic, Native Hawaiian/Pacific Islander

Retention and Graduation Rates

Honors College

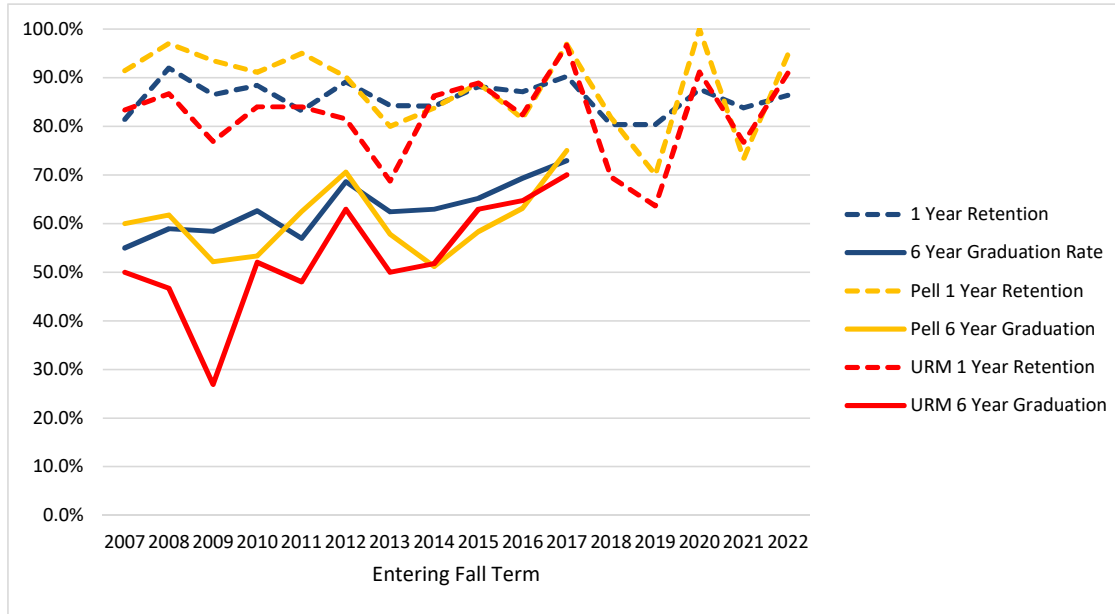


Entering Fall Term	2007	2008	2009	2010	2011	2012	2013	2014	2015	2016	2017	2018	2019	2020	2021	2022
Cohort	87	112	116	178	190	213	201	296	252	352	378	451	418	466	457	515
1 Year Retention	95.4%	88.4%	97.4%	97.2%	98.9%	95.3%	96.5%	98.0%	95.2%	96.0%	96.6%	96.0%	92.3%	97.0%	96.1%	94.8%
6 Year Graduation Rate	93.1%	83.9%	93.1%	88.8%	96.3%	87.8%	94.0%	91.9%	88.9%	90.1%	91.5%					
Pell	25	25	34	45	46	52	46	65	46	58	73	82	61	69	53	55
Pell 1 Year Retention	96.0%	92.0%	94.1%	100.0%	100.0%	96.2%	95.7%	96.9%	89.1%	91.4%	95.9%	91.5%	93.4%	100.0%	98.1%	90.9%
Pell 6 Year Graduation	88.0%	84.0%	91.2%	77.8%	95.7%	80.8%	87.0%	86.2%	78.3%	86.2%	91.8%					
URM	5	6	0	8	9	9	12	20	15	26	34	31	45	63	29	46
URM 1 Year Retention	80.0%	83.3%		100.0%	100.0%	100.0%	100.0%	100.0%	100.0%	96.2%	94.1%	96.8%	88.9%	100.0%	100.0%	89.1%
URM 6 Year Graduation	100.0%	100.0%		100.0%	88.9%	77.8%	100.0%	95.0%	100.0%	84.6%	94.1%					

- Based on Honors College identifier in first fall term
- These students are also counted in their respective entering college

Retention and Graduation Rates

Student Athletes



Entering Fall Term	2007	2008	2009	2010	2011	2012	2013	2014	2015	2016	2017	2018	2019	2020	2021	2022
Cohort	151	112	178	147	137	156	165	170	135	163	133	158	61	113	148	154
1 Year Retention	81.5%	92.0%	86.5%	88.4%	83.2%	89.1%	84.2%	84.1%	88.1%	87.1%	90.2%	80.4%	80.3%	87.6%	83.8%	86.4%
6 Year Graduation Rate	55.0%	58.9%	58.4%	62.6%	56.9%	68.6%	62.4%	62.9%	65.2%	69.3%	72.9%					
Pell	35	34	46	45	40	51	45	43	36	38	32	22	10	9	15	19
Pell 1 Year Retention	91.4%	97.1%	93.5%	91.1%	95.0%	90.2%	80.0%	83.7%	88.9%	81.6%	96.9%	81.8%	70.0%	100.0%	73.3%	94.7%
Pell 6 Year Graduation	60.0%	61.8%	52.2%	53.3%	62.5%	70.6%	57.8%	51.2%	58.3%	63.2%	75.0%					
URM	30	15	26	25	25	27	32	29	27	34	30	23	11	34	30	33
URM 1 Year Retention	83.3%	86.7%	76.9%	84.0%	84.0%	81.5%	68.8%	86.2%	88.9%	82.4%	96.7%	69.6%	63.6%	91.2%	76.7%	90.9%
URM 6 Year Graduation	50.0%	46.7%	26.9%	52.0%	48.0%	63.0%	50.0%	51.7%	63.0%	64.7%	70.0%					

- Based on Athlete identifier in first fall term
- These students are also counted in their respective entering college.

Oregon State University
Retention and Graduation Rates for Cohorts: Fall 2006 to Fall 2021
University Rates for Cohorts*

Year	Cohort	1 Yr Retained	2 Yr Retained	2 Yr Graduated	3 Yr Retained	3 Yr Graduated	4 Yr Retained	4 Yr Graduated	5 Yr Retained	5 Yr Graduated	6 Yr Retained	6 Yr Graduated
2007	2972	2401 80.8%	2142 72.1%	3 0.1%	2036 68.5%	42 1.4%	1065 35.8%	878 29.5%	276 9.3%	1647 55.4%	92 3.1%	1826 61.4%
2008	3003	2483 82.7%	2214 73.7%	3 0.1%	2076 69.1%	50 1.7%	1081 36.0%	922 30.7%	331 11.0%	1685 56.1%	102 3.4%	1896 63.1%
2009	3314	2753 83.1%	2483 74.9%	4 0.1%	2319 70.0%	50 1.5%	1163 35.1%	1072 32.3%	305 9.2%	1925 58.1%	92 2.8%	2130 64.3%
2010	3480	2834 81.4%	2569 73.8%	4 0.1%	2410 69.3%	43 1.2%	1154 33.2%	1145 32.9%	312 9.0%	1995 57.3%	104 3.0%	2204 63.3%
2011	3335	2777 83.3%	2528 75.8%	2 0.1%	2341 70.2%	67 2.0%	1147 34.4%	1110 33.3%	305 9.1%	1975 59.2%	122 3.7%	2179 65.3%
2012	3321	2796 84.2%	2558 77.0%	3 0.1%	2401 72.3%	66 2.0%	1095 33.0%	1223 36.8%	317 9.5%	2029 61.1%	132 4.0%	2226 67.0%
2013	3553	2976 83.8%	2701 76.0%	7 0.2%	2495 70.2%	79 2.2%	1228 34.6%	1238 34.8%	313 8.8%	2149 60.5%	102 2.9%	2384 67.1%
2014	3449	2926 84.8%	2703 78.4%	4 0.1%	2537 73.6%	82 2.4%	1071 31.1%	1403 40.7%	273 7.9%	2198 63.7%	88 2.6%	2391 69.3%
2015	3338	2783 83.4%	2574 77.1%	1 0.0%	2378 71.2%	88 2.6%	1013 30.3%	1355 40.6%	250 7.5%	2125 63.7%	95 2.8%	2276 68.2%
2016	3521	2989 84.9%	2742 77.9%	6 0.2%	2539 72.1%	112 3.2%	937 26.6%	1631 46.3%	236 6.7%	2334 66.3%	104 3.0%	2466 70.0%
2017	3418	2878 84.2%	2683 78.5%	5 0.1%	2461 72.0%	122 3.6%	910 26.6%	1608 47.0%	216 6.3%	2282 66.8%	96 2.8%	2414 70.6%
2018	3339	2851 85.4%	2643 79.2%	9 0.3%	2416 72.4%	153 4.6%	867 26.0%	1575 47.2%	260 7.8%	2190 65.6%		
2019	3040	2571 84.6%	2409 79.2%	18 0.6%	2135 70.2%	137 4.5%	773 25.4%	1381 44.8%				
2020	3123	2710 86.8%	2490 79.7%	12 0.4%	2279 73.0%	126 4.0%						
2021	3601	3126 86.8%	2897 80.4%	7 0.2%								
2022	4063	3554 87.5%										

Cohort: first-time college, full-time degree seeking undergraduates admitted for fall term or preceding summer term.

First-time: never matriculated as degree-seeking students at another college or university.

Full-time: enrolled in 12 or more credit hours in first fall term.

Retained: enrolled in a subsequent fall term but not yet graduated.

Graduated: received first bachelor's degree by the summer before the given following fall term.

Example, 6 year graduation counts degrees earned up to the summer before the seventh fall term.