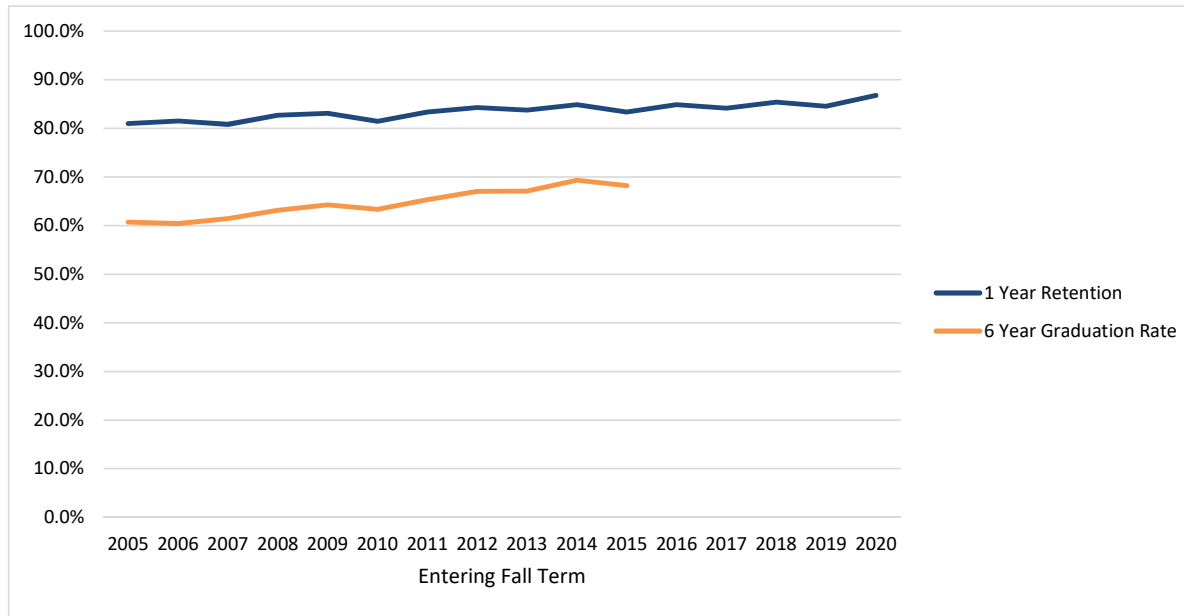


## Retention and Graduation Rates of First-time, Full-time Degree Seeking Freshmen

### OSU Total



Entering Fall Term	2005	2006	2007	2008	2009	2010	2011	2012	2013	2014	2015	2016	2017	2018	2019	2020
Cohort	2794	2782	2972	3003	3314	3480	3335	3321	3553	3449	3338	3521	3418	3339	3041	3124
1 Year Retention	81.0%	81.5%	80.8%	82.7%	83.1%	81.5%	83.4%	84.3%	83.8%	84.9%	83.4%	84.8%	84.2%	85.4%	84.5%	86.8%
6 Year Graduation Rate	60.7%	60.4%	61.4%	63.1%	64.3%	63.3%	65.3%	67.0%	67.1%	69.3%	68.2%					

Cohort: first-time college, full-time degree seeking undergraduates admitted for fall term or preceding summer term.

First-time: never matriculated as degree-seeking students at another college or university.

Full-time: enrolled in 12 or more credit hours in first fall term.

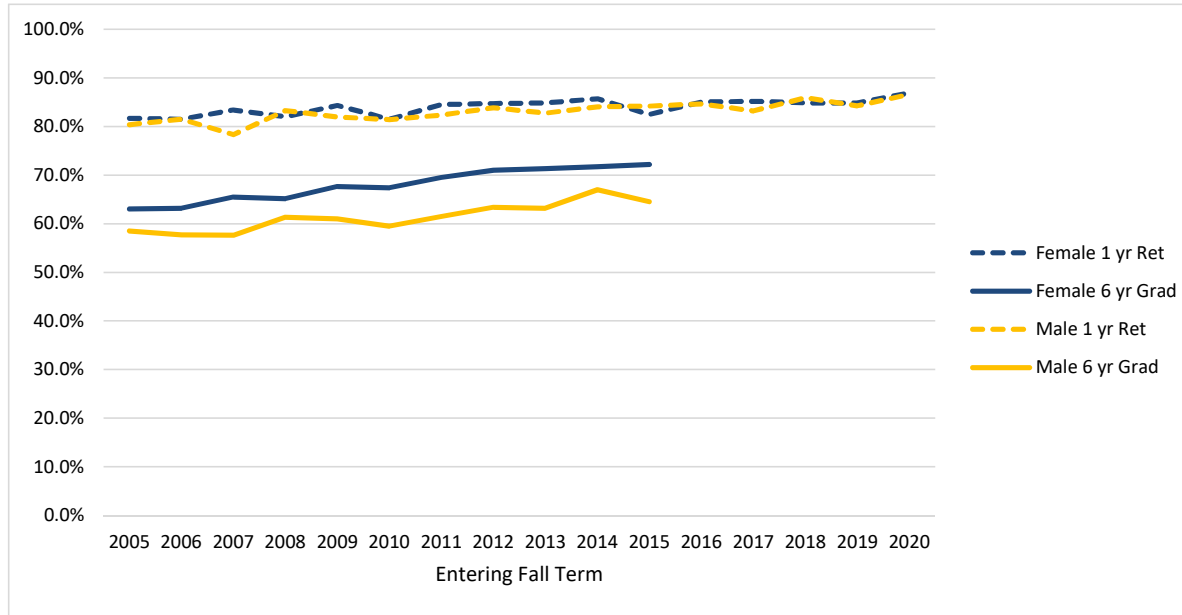
Retained: enrolled in a subsequent fall term but not yet graduated.

Graduated: received first bachelor's degree by the summer before the given following fall term.

Example, 6 year graduation counts degrees earned up to the summer before the seventh fall term.

## Retention and Graduation Rates of First-time, Full-time Degree Seeking Freshmen

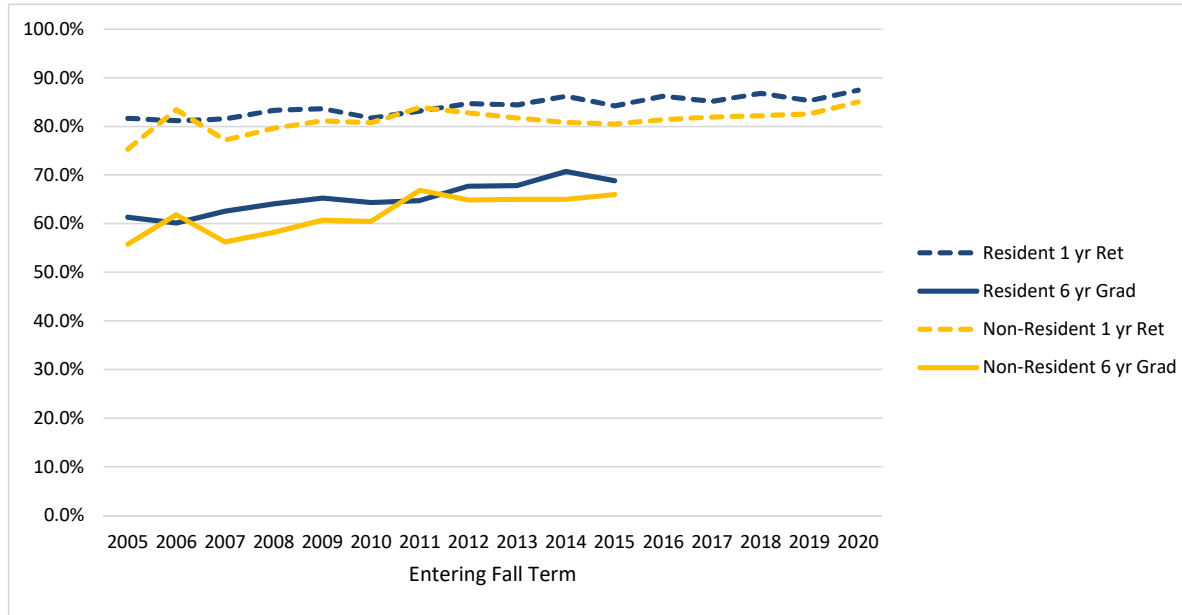
**Female/ Male**



Entering Fall Term	2005	2006	2007	2008	2009	2010	2011	2012	2013	2014	2015	2016	2017	2018	2019	2020
<b>Female</b>	1358	1356	1436	1420	1621	1679	1599	1580	1706	1689	1596	1735	1660	1624	1483	1513
Female 1 yr Ret	81.7%	81.5%	83.4%	82.0%	84.3%	81.5%	84.5%	84.7%	84.9%	85.7%	82.5%	85.1%	85.2%	84.9%	84.8%	86.9%
Female 6 yr Grad	63.0%	63.2%	65.5%	65.1%	67.7%	67.4%	69.5%	71.0%	71.3%	71.8%	72.2%					
<b>Male</b>	1436	1426	1536	1583	1693	1801	1736	1741	1847	1760	1742	1788	1761	1717	1559	1612
Male 1 yr Ret	80.4%	81.5%	78.3%	83.3%	81.9%	81.5%	82.3%	83.9%	82.7%	84.0%	84.2%	84.6%	83.2%	85.9%	84.3%	86.6%
Male 6 yr Grad	58.5%	57.7%	57.6%	61.3%	61.0%	59.5%	61.5%	63.4%	63.2%	67.0%	64.5%					

## Retention and Graduation Rates of First-time, Full-time Degree Seeking Freshmen

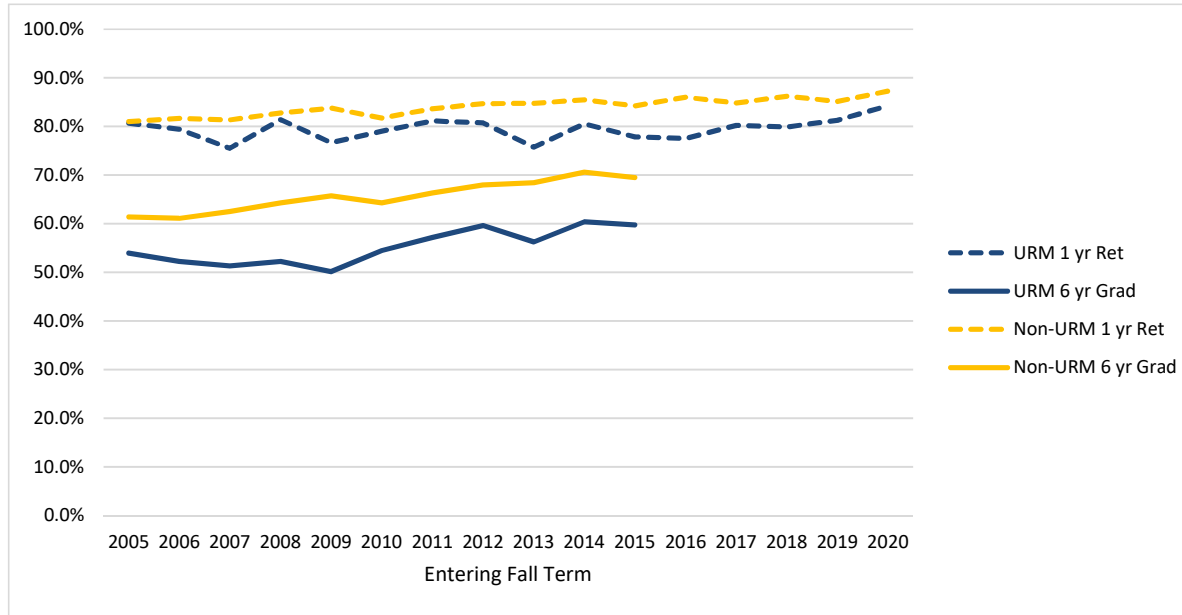
### Oregon Resident/ Non-Resident



Entering Fall Term	2005	2006	2007	2008	2009	2010	2011	2012	2013	2014	2015	2016	2017	2018	2019	2020
<b>Resident</b>	2482	2407	2432	2493	2588	2551	2459	2489	2633	2588	2544	2515	2406	2331	2256	2236
Resident 1 yr Ret	81.7%	81.2%	81.6%	83.3%	83.7%	81.7%	83.2%	84.7%	84.5%	86.2%	84.3%	86.2%	85.1%	86.8%	85.3%	87.5%
Resident 6 yr Grad	61.3%	60.2%	62.6%	64.1%	65.3%	64.4%	64.8%	67.7%	67.8%	70.7%	68.9%					
<b>Non-Resident</b>	312	375	540	510	726	929	876	832	920	861	794	1008	1015	1010	786	889
Non-Resident 1 yr Ret	75.3%	83.5%	77.2%	79.6%	81.1%	80.7%	83.9%	82.8%	81.7%	80.8%	80.5%	81.4%	82.0%	82.2%	82.6%	85.0%
Non-Resident 6 yr Grad	55.8%	61.9%	56.3%	58.2%	60.7%	60.5%	66.9%	64.9%	65.0%	65.0%	66.0%					

## Retention and Graduation Rates of First-time, Full-time Degree Seeking Freshmen

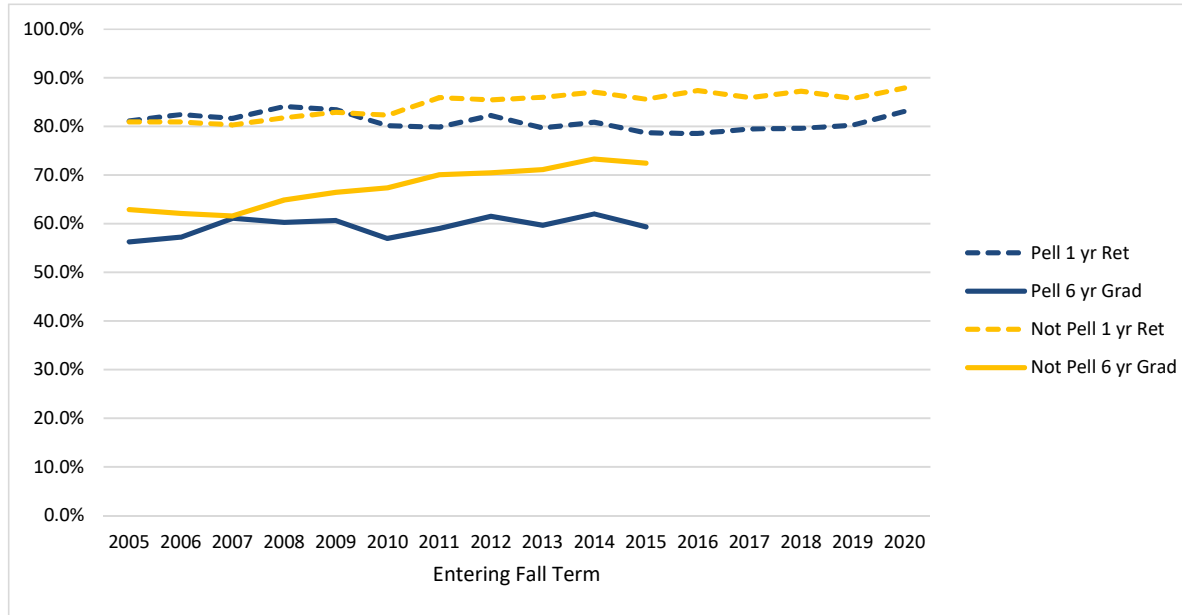
**Underrepresented Ethnic Group (African American, American Indian/Alaska Native, Hispanic, Native Hawaiian/Pacific Islander)/ Non-URM**



Entering Fall Term	2005	2006	2007	2008	2009	2010	2011	2012	2013	2014	2015	2016	2017	2018	2019	2020
<b>URM</b>	254	224	294	285	309	334	355	369	400	437	452	490	480	433	486	547
URM 1 yr Ret	80.7%	79.5%	75.5%	81.4%	76.7%	79.0%	81.1%	80.8%	75.8%	80.5%	77.9%	77.6%	80.2%	79.9%	81.3%	84.3%
URM 6 yr Grad	53.9%	52.2%	51.4%	52.3%	50.2%	54.5%	57.2%	59.6%	56.3%	60.4%	59.7%					
<b>Non-URM</b>	2540	2558	2678	2718	3005	3146	2980	2952	3153	3012	2886	3033	2941	2908	2556	2578
Non-URM 1 yr Ret	81.0%	81.7%	81.4%	82.8%	83.8%	81.7%	83.6%	84.7%	84.8%	85.5%	84.2%	86.0%	84.8%	86.2%	85.2%	87.3%
Non-URM 6 yr Grad	61.4%	61.1%	62.5%	64.3%	65.7%	64.3%	66.3%	68.0%	68.5%	70.6%	69.5%					

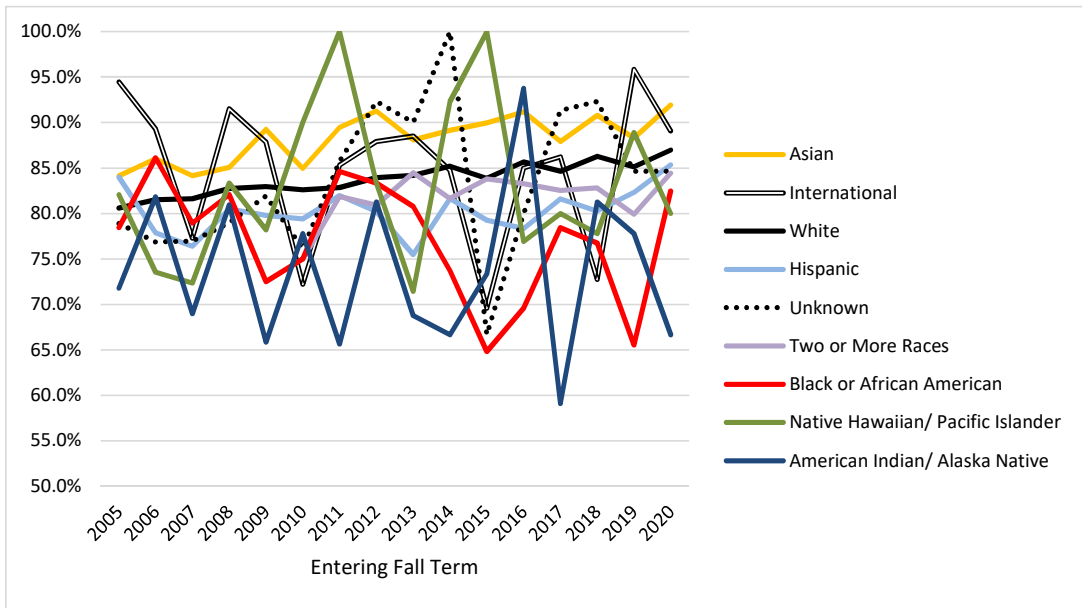
## Retention and Graduation Rates of First-time, Full-time Degree Seeking Freshmen

### Pell/ Not-Pell



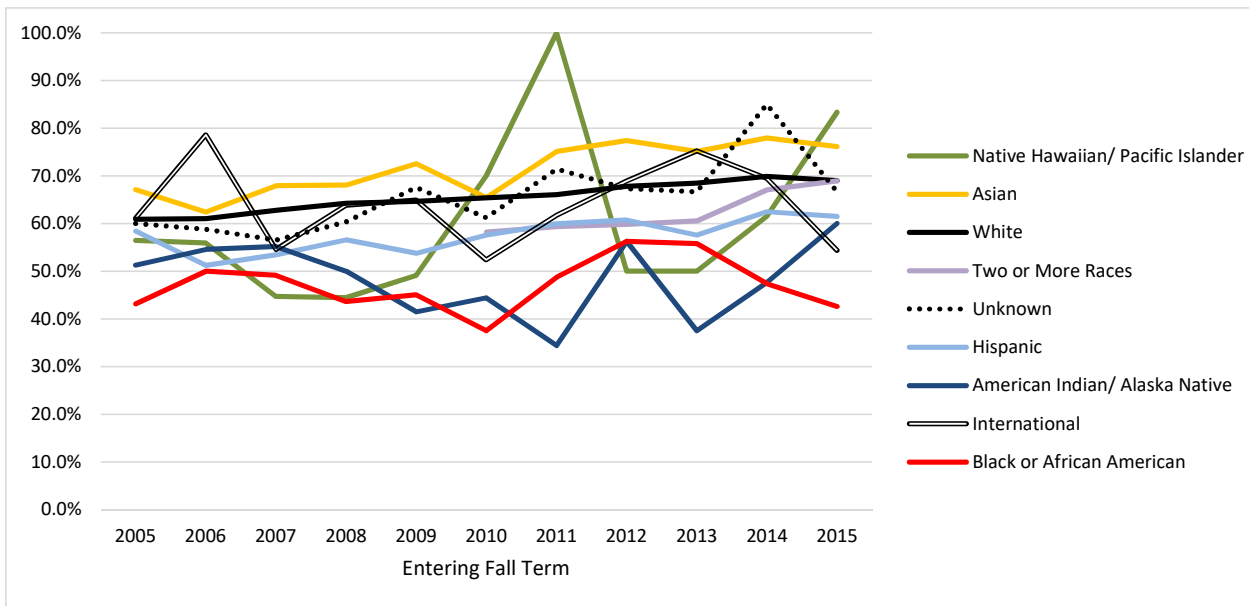
Entering Fall Term	2005	2006	2007	2008	2009	2010	2011	2012	2013	2014	2015	2016	2017	2018	2019	2020
<b>Pell</b>	922	975	1047	1127	1256	1348	1422	1278	1254	1222	1090	1016	929	804	675	759
Pell 1 yr Ret	81.1%	82.5%	81.7%	84.1%	83.4%	80.1%	79.9%	82.2%	79.7%	80.9%	78.7%	78.5%	79.5%	79.6%	80.3%	83.1%
Pell 6 yr Grad	56.3%	57.2%	61.1%	60.2%	60.7%	57.0%	59.0%	61.5%	59.6%	62.0%	59.4%					
<b>Not Pell</b>	1872	1807	1925	1876	2058	2132	1913	2043	2299	2227	2248	2507	2492	2537	2367	2366
Not Pell 1 yr Ret	80.9%	81.0%	80.3%	81.8%	82.9%	82.3%	85.9%	85.5%	86.0%	87.1%	85.6%	87.4%	86.0%	87.2%	85.8%	87.9%
Not Pell 6 yr Grad	62.9%	62.1%	61.6%	64.9%	66.5%	67.4%	70.0%	70.5%	71.2%	73.3%	72.5%					

### Ethnic Group 1 Year Retention Rates



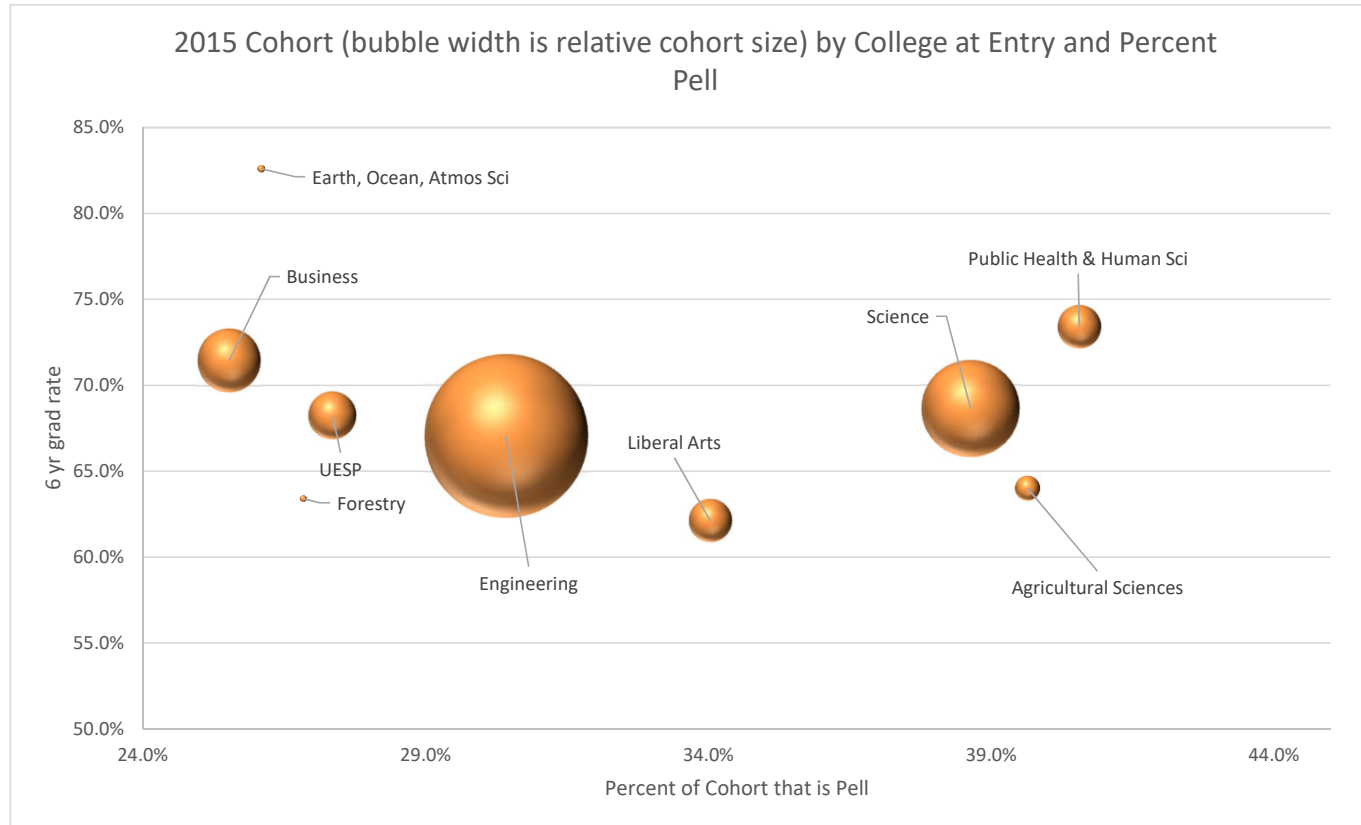
Entering Fall Term	2005	2006	2007	2008	2009	2010	2011	2012	2013	2014	2015	2016	2017	2018	2019	2020
American Indian/ Alaska Native	39 71.8%	33 81.8%	29 69.0%	42 81.0%	41 65.9%	27 77.8%	32 65.6%	16 81.3%	16 68.8%	21 66.7%	15 73.3%	16 93.8%	22 59.1%	16 81.3%	18 77.8%	18 66.7%
Asian	233 84.1%	250 86.0%	290 84.1%	288 85.1%	353 89.2%	266 85.0%	294 89.5%	274 91.2%	285 88.1%	340 89.1%	318 89.9%	352 91.2%	289 87.9%	347 90.8%	282 88.3%	272 91.9%
Black or African American	51 78.4%	36 86.1%	57 78.9%	39 82.1%	40 72.5%	40 75.0%	39 84.6%	48 83.3%	52 80.8%	38 73.7%	54 64.8%	69 69.6%	51 78.4%	43 76.7%	29 65.5%	57 82.5%
Hispanic	125 84.0%	122 77.9%	161 76.4%	169 80.5%	173 79.8%	257 79.4%	277 81.9%	293 80.2%	318 75.5%	365 81.6%	371 79.2%	392 78.3%	402 81.6%	365 80.3%	430 82.3%	457 85.3%
Native Hawaiian/ Pacific Islander	39 82.1%	34 73.5%	47 72.3%	36 83.3%	55 78.2%	10 90.0%	7 100.0%	12 83.3%	14 71.4%	13 92.3%	12 100.0%	13 76.9%	5 80.0%	9 77.8%	9 88.9%	15 80.0%
Two or More Races						220 75.0%	237 81.9%	267 80.9%	309 84.5%	283 81.6%	296 83.8%	287 83.3%	309 82.5%	308 82.8%	249 79.9%	257 84.4%
Unknown	180 78.9%	268 76.9%	269 77.0%	252 79.0%	188 81.9%	67 76.1%	21 85.7%	52 92.3%	30 90.0%	20 100.0%	15 66.7%	20 80.0%	23 91.3%	13 92.3%	13 84.6%	13 84.6%
White	2113 80.6%	2016 81.5%	2076 81.6%	2132 82.7%	2391 82.9%	2468 82.6%	2330 82.8%	2271 83.9%	2416 84.2%	2314 85.2%	2212 83.9%	2314 85.7%	2262 84.6%	2185 86.3%	1964 85.1%	1972 87.0%
International	18 94.4%	28 89.3%	44 77.3%	47 91.5%	74 87.8%	126 72.2%	102 85.3%	91 87.9%	113 88.5%	59 84.7%	46 69.6%	60 85.0%	58 86.2%	55 72.7%	48 95.8%	64 89.1%

### Ethnic Group 6 Year Graduation Rates



Entering Fall Term	2005	2006	2007	2008	2009	2010	2011	2012	2013	2014	2015	2016	2017	2018	2019	2020
American Indian/ Alaska Native	39 51.3%	33 54.5%	29 55.2%	42 50.0%	41 41.5%	27 44.4%	32 34.4%	16 56.3%	16 37.5%	21 47.6%	15 60.0%	16	22	16	18	18
Asian	231 67.1%	250 62.4%	290 67.9%	288 68.1%	353 72.5%	266 65.4%	293 75.1%	274 77.4%	285 75.1%	340 77.9%	318 76.1%	352	289	347	282	272
Black or African American	51 43.1%	36 50.0%	57 49.1%	39 43.6%	40 45.0%	40 37.5%	39 48.7%	48 56.3%	52 55.8%	38 47.4%	54 42.6%	69	51	43	29	57
Hispanic	125 58.4%	121 51.2%	161 53.4%	168 56.5%	173 53.8%	257 57.6%	277 59.9%	293 60.8%	318 57.5%	365 62.5%	371 61.5%	392	402	365	430	457
Native Hawaiian/ Pacific Islander	39 56.4%	34 55.9%	47 44.7%	36 44.4%	55 49.1%	10 70.0%	7 100.0%	12 50.0%	14 50.0%	13 61.5%	12 83.3%	13	5	9	9	15
Two or More Races						220 58.2%	236 59.3%	266 59.8%	309 60.5%	282 67.0%	296 68.9%	287	309	308	249	257
Unknown	180 60.0%	267 58.8%	269 56.5%	252 60.3%	188 67.6%	67 61.2%	21 71.4%	52 67.3%	30 66.7%	20 85.0%	15 66.7%	20	23	13	13	13
White	2111 60.9%	2013 61.0%	2075 62.7%	2131 64.2%	2390 64.6%	2467 65.4%	2328 66.1%	2270 67.8%	2416 68.4%	2311 69.9%	2211 69.0%	2314	2262	2185	1964	1972
International	18 61.1%	28 78.6%	44 54.5%	47 63.8%	74 64.9%	126 52.4%	102 61.8%	90 68.9%	113 75.2%	59 69.5%	46 54.3%	60	58	55	48	64

## 2015 College Cohort 6 yr Grad Rate by Percent Pell



Pell percent provides a partial explanation for differences in college 6 year graduation rates, although many factors affect these rates.

Since Pell students have lower graduation rates than non-Pell students, we expect lower graduation rates in colleges with higher Pell percent.

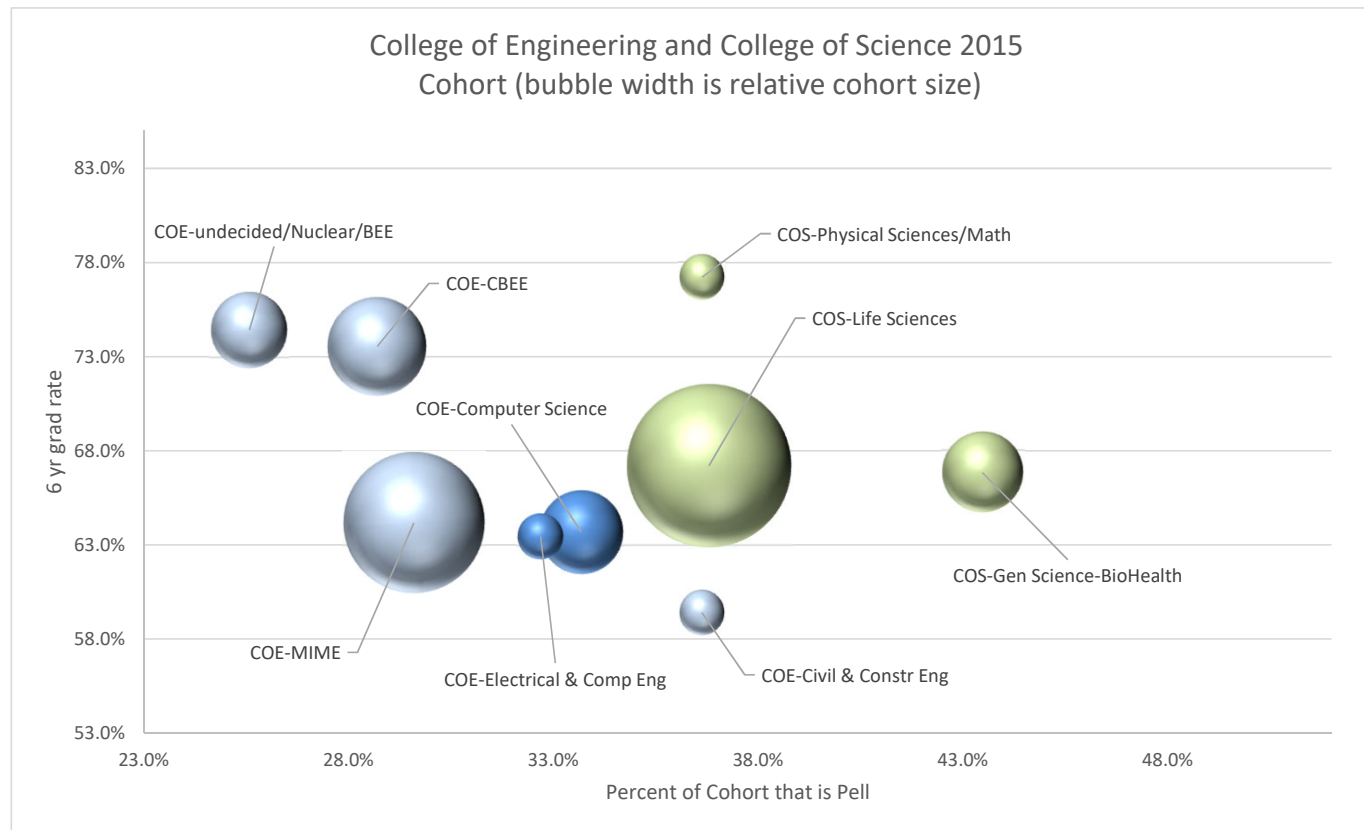
For the 2015 cohort, the following colleges performed above expectation:

CEAOS, Public Health & Human Sciences, Science, and Agricultural Sciences.

Bubble widths provide the relative proportion of entering college cohorts. The next chart breaks up two of the larger cohorts into discipline groups.



**2015 College of Engineering & College of Science Cohort 6 yr Grad Rate by Percent Pell**



Several Engineering areas saw small drops in graduation rate from prior year, with Civil and Construction Engineering seeing the largest drop of about 14% (they also increased the percent of Pell students by about 8%, which may explain most of the drop). However, Undecided/Nuclear/BEE saw about a 7% increase and CBEE maintained its level.

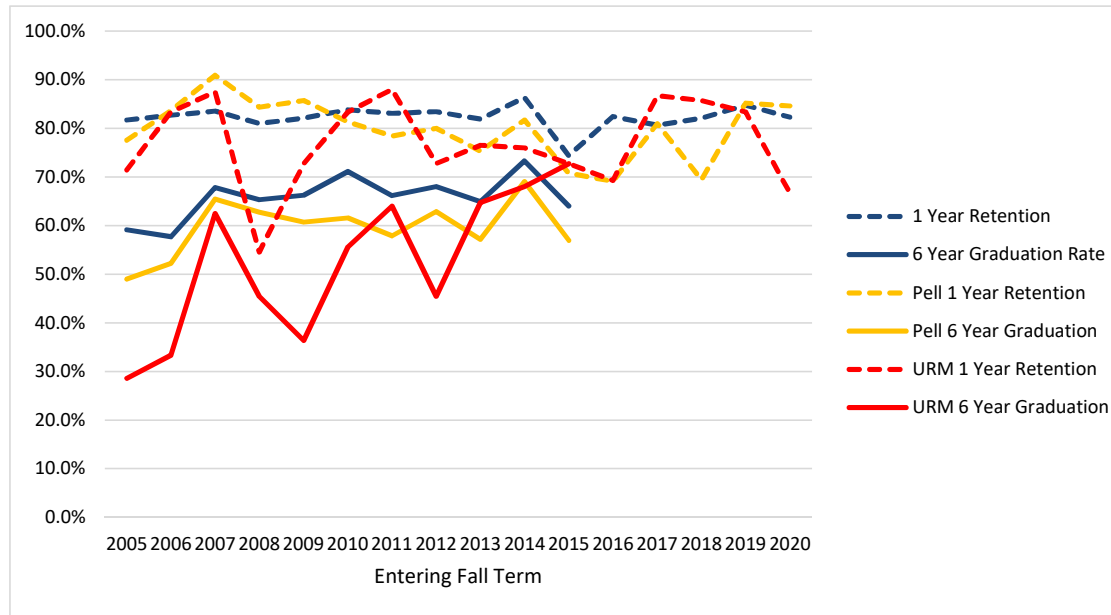
Life Sciences and Biohealth Sciences saw small drops, but Physical Science/Math saw about a 5% increase.

Most cohorts experienced a drop in Percent Pell, mirroring a general trend of fewer Pell students at OSU.

CBEE and undecided/Nuclear/BEE have high proportion of females (41% and 29% respectively) for Engineering, which may partially explain the higher outcomes. But this pattern does not occur in Science where General/Biohealth Science is 76% female and Life Science is 67% female, but Physical Science/Math is 45% female.

## Retention and Graduation Rates by College of Entering Primary Major

### Agricultural Sciences

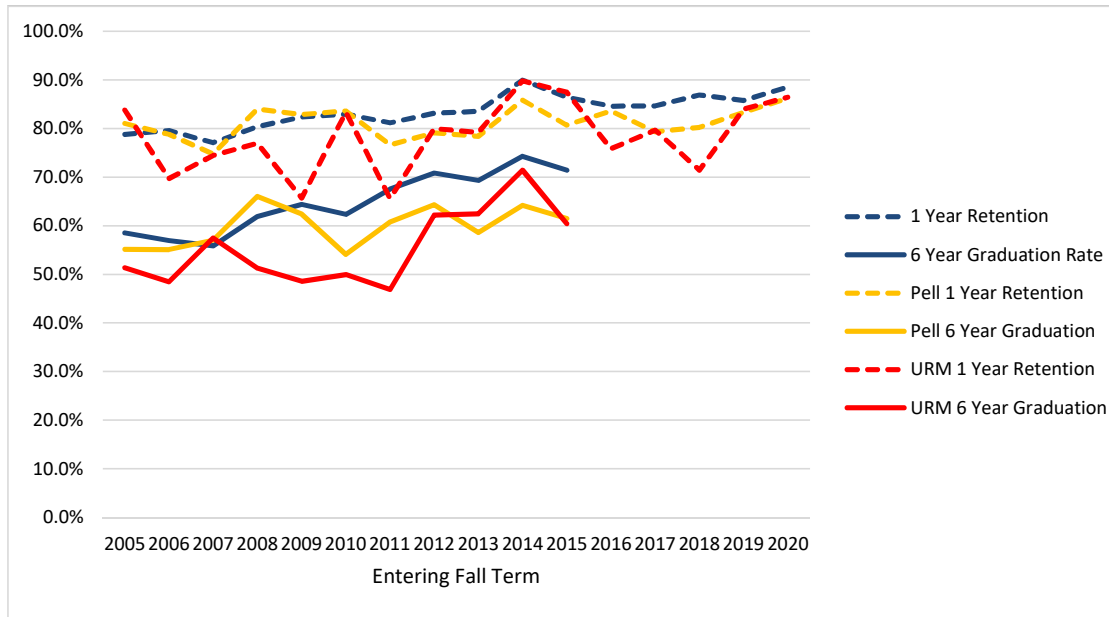


Entering Fall Term	2005	2006	2007	2008	2009	2010	2011	2012	2013	2014	2015	2016	2017	2018	2019	2020
Cohort	142	156	146	147	151	204	213	175	188	161	164	182	186	162	164	147
1 Year Retention	81.7%	82.7%	83.6%	81.0%	82.1%	83.8%	83.1%	83.4%	81.9%	86.3%	74.4%	82.4%	80.6%	82.1%	84.8%	82.3%
6 Year Graduation Rate	59.2%	57.7%	67.8%	65.3%	66.2%	71.1%	66.2%	68.0%	64.9%	73.3%	64.0%					
Pell	49	67	55	51	56	91	102	70	77	71	65	55	63	49	54	39
Pell 1 Year Retention	77.6%	83.6%	90.9%	84.3%	85.7%	81.3%	78.4%	80.0%	75.3%	81.7%	70.8%	69.1%	81.0%	69.4%	85.2%	84.6%
Pell 6 Year Graduation	49.0%	52.2%	65.5%	62.7%	60.7%	61.5%	57.8%	62.9%	57.1%	69.0%	56.9%					
URM	7	6	8	11	11	18	25	11	17	25	22	26	30	28	30	24
URM 1 Year Retention	71.4%	83.3%	87.5%	54.5%	72.7%	83.3%	88.0%	72.7%	76.5%	76.0%	72.7%	69.2%	86.7%	85.7%	83.3%	66.7%
URM 6 Year Graduation	28.6%	33.3%	62.5%	45.5%	36.4%	55.6%	64.0%	45.5%	64.7%	68.0%	72.7%					

- Retention and Graduation are to ANY major - not necessarily the primary major at entry.
- Pell is based on having a Pell grant at any point as an undergraduate, not just in term of entry.
- URM is standard federal Underrepresented Minority definition: American Indian/Alaska Native, Black or African American, Hispanic, Native Hawaiian/Pacific Islander

## Retention and Graduation Rates by College of Entering Primary Major

### Business

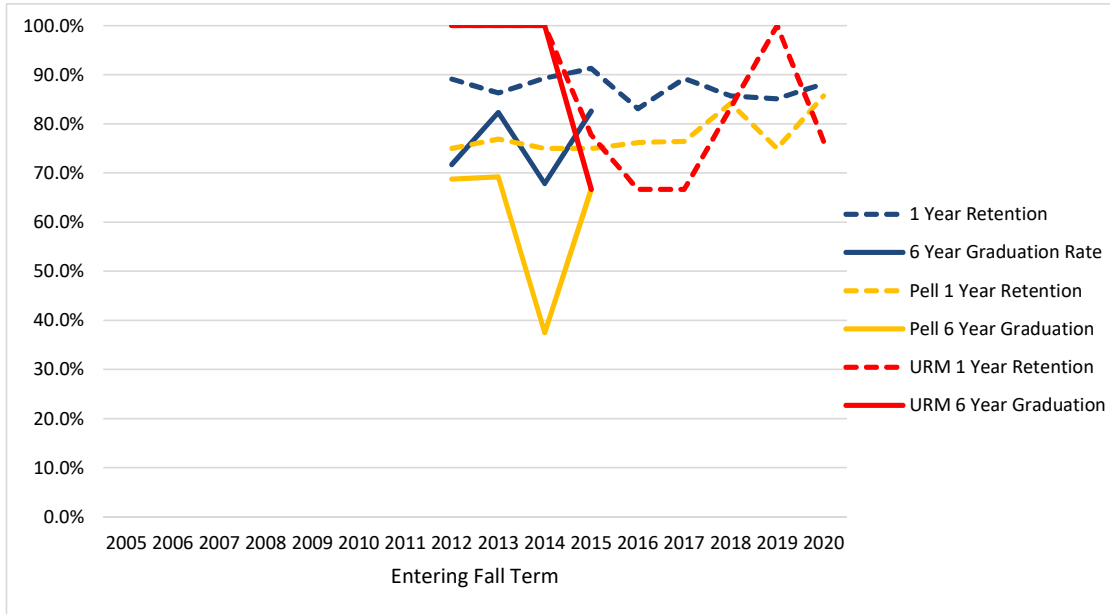


Entering Fall Term	2005	2006	2007	2008	2009	2010	2011	2012	2013	2014	2015	2016	2017	2018	2019	2020
Cohort	429	402	410	357	379	364	308	374	401	408	427	480	462	428	359	402
1 Year Retention	78.8%	79.6%	77.1%	80.4%	82.3%	83.0%	81.2%	83.2%	83.5%	90.0%	86.4%	84.6%	84.6%	86.9%	85.8%	88.6%
6 Year Graduation Rate	58.5%	57.0%	55.9%	61.9%	64.4%	62.4%	67.5%	70.9%	69.3%	74.3%	71.4%					
Pell	116	118	107	106	117	122	107	115	111	106	109	122	92	86	54	87
Pell 1 Year Retention	81.0%	78.8%	74.8%	84.0%	82.9%	83.6%	76.6%	79.1%	78.4%	85.8%	80.7%	83.6%	79.3%	80.2%	83.3%	86.2%
Pell 6 Year Graduation	55.2%	55.1%	57.0%	66.0%	62.4%	54.1%	60.7%	64.3%	58.6%	64.2%	61.5%					
URM	37	33	47	39	35	30	32	45	48	49	48	58	59	42	50	81
URM 1 Year Retention	83.8%	69.7%	74.5%	76.9%	65.7%	83.3%	65.6%	80.0%	79.2%	89.8%	87.5%	75.9%	79.7%	71.4%	84.0%	86.4%
URM 6 Year Graduation	51.4%	48.5%	57.4%	51.3%	48.6%	50.0%	46.9%	62.2%	62.5%	71.4%	60.4%					

- Retention and Graduation are to ANY major - not necessarily the primary major at entry.
- Pell is based on having a Pell grant at any point as an undergraduate, not just in term of entry.
- URM is standard federal Underrepresented Minority definition: American Indian/Alaska Native, Black or African American, Hispanic, Native Hawaiian/Pacific Islander

## Retention and Graduation Rates by College of Entering Primary Major

### Earth, Ocean, and Atmospheric Sciences

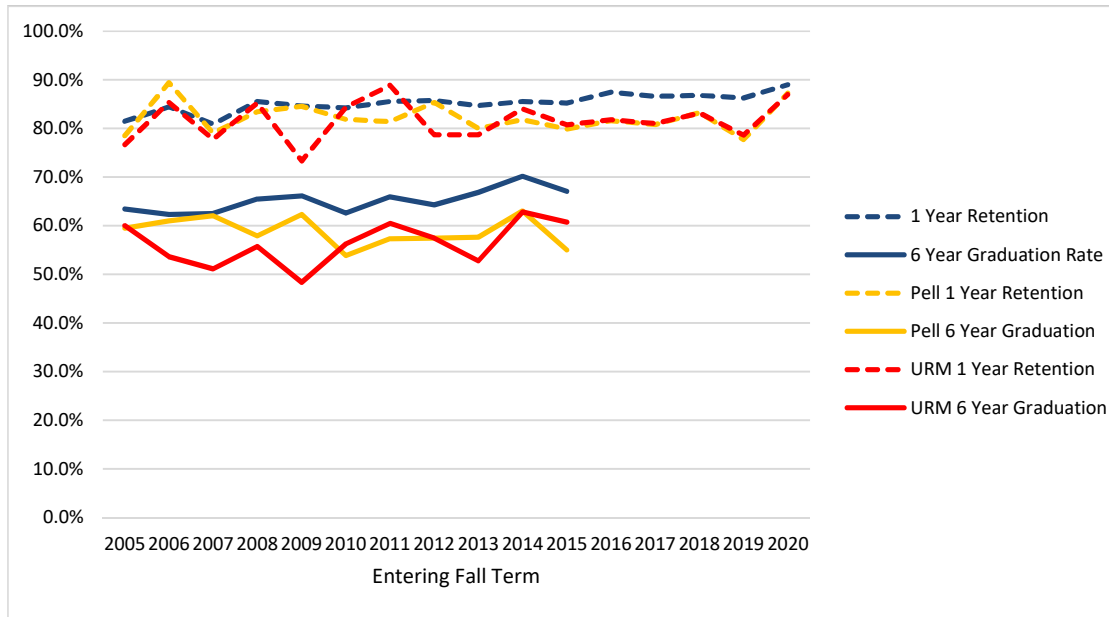


Entering Fall Term	2005	2006	2007	2008	2009	2010	2011	2012	2013	2014	2015	2016	2017	2018	2019	2020
Cohort								46	51	28	46	71	65	91	74	93
1 Year Retention								89.1%	86.3%	89.3%	91.3%	83.1%	89.2%	85.7%	85.1%	88.2%
6 Year Graduation Rate								71.7%	82.4%	67.9%	82.6%					
Pell								16	13	8	12	21	17	19	12	14
Pell 1 Year Retention								75.0%	76.9%	75.0%	75.0%	76.2%	76.5%	84.2%	75.0%	85.7%
Pell 6 Year Graduation								68.8%	69.2%	37.5%	66.7%					
URM								3	1	2	9	9	9	12	10	17
URM 1 Year Retention								100.0%	100.0%	100.0%	77.8%	66.7%	66.7%	83.3%	100.0%	76.5%
URM 6 Year Graduation								100.0%	100.0%	100.0%	66.7%					

- Retention and Graduation are to ANY major - not necessarily the primary major at entry.
- Pell is based on having a Pell grant at any point as an undergraduate, not just in term of entry.
- URM is standard federal Underrepresented Minority definition: American Indian/Alaska Native, Black or African American, Hispanic, Native Hawaiian/Pacific Islander

## Retention and Graduation Rates by College of Entering Primary Major

### Engineering

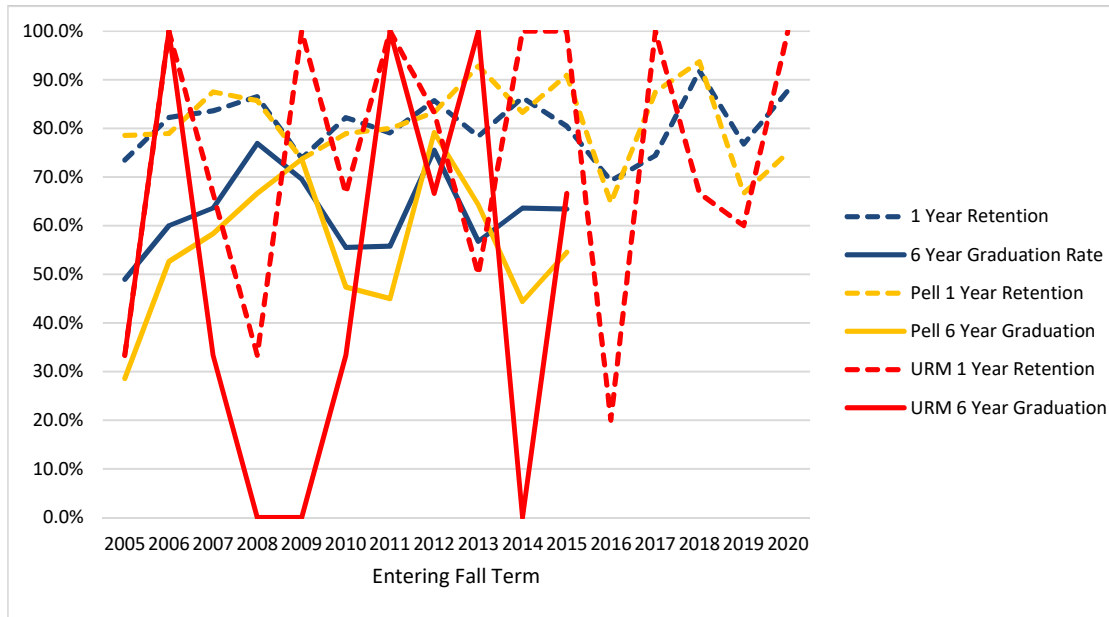


Entering Fall Term	2005	2006	2007	2008	2009	2010	2011	2012	2013	2014	2015	2016	2017	2018	2019	2020
Cohort	626	650	702	809	845	938	927	1051	1174	1123	1111	1125	1130	1122	1007	1091
1 Year Retention	81.5%	84.5%	80.9%	85.5%	84.6%	84.2%	85.5%	85.7%	84.7%	85.6%	85.2%	87.5%	86.6%	86.8%	86.3%	89.0%
6 Year Graduation Rate	63.4%	62.3%	62.5%	65.5%	66.2%	62.6%	65.9%	64.3%	66.9%	70.2%	67.1%					
Pell	205	236	253	278	337	336	361	362	366	357	338	294	266	233	211	244
Pell 1 Year Retention	78.5%	89.4%	79.1%	83.5%	84.6%	81.8%	81.4%	85.4%	80.1%	81.8%	79.9%	81.6%	80.8%	83.3%	77.7%	87.3%
Pell 6 Year Graduation	59.5%	61.0%	62.1%	57.9%	62.3%	53.9%	57.3%	57.5%	57.7%	63.0%	55.0%					
URM	30	41	45	61	60	64	81	94	108	113	135	121	116	143	145	169
URM 1 Year Retention	76.7%	85.4%	77.8%	85.2%	73.3%	84.4%	88.9%	78.7%	78.7%	84.1%	80.7%	81.8%	81.0%	83.2%	78.6%	87.0%
URM 6 Year Graduation	60.0%	53.7%	51.1%	55.7%	48.3%	56.3%	60.5%	57.4%	52.8%	62.8%	60.7%					

- Retention and Graduation are to ANY major - not necessarily the primary major at entry.
- Pell is based on having a Pell grant at any point as an undergraduate, not just in term of entry.
- URM is standard federal Underrepresented Minority definition: American Indian/Alaska Native, Black or African American, Hispanic, Native Hawaiian/Pacific Islander

## Retention and Graduation Rates by College of Entering Primary Major

### Forestry

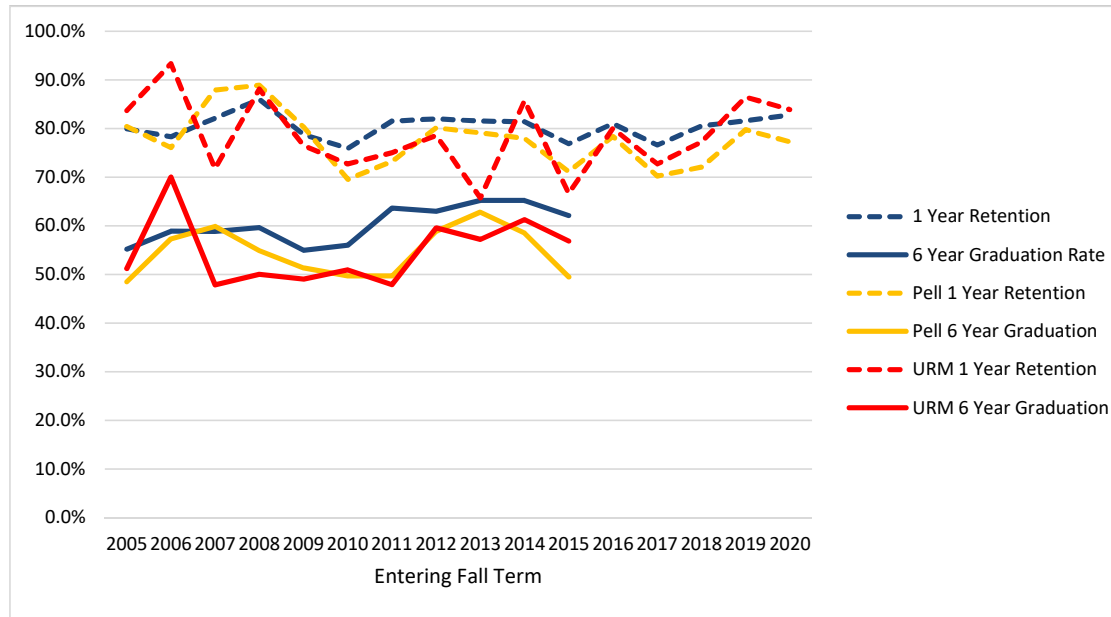


Entering Fall Term	2005	2006	2007	2008	2009	2010	2011	2012	2013	2014	2015	2016	2017	2018	2019	2020
Cohort	49	45	55	52	46	45	43	49	37	44	41	39	43	49	56	41
1 Year Retention	73.5%	82.2%	83.6%	86.5%	73.9%	82.2%	79.1%	85.7%	78.4%	86.4%	80.5%	69.2%	74.4%	91.8%	76.8%	87.8%
6 Year Graduation Rate	49.0%	60.0%	63.6%	76.9%	69.6%	55.6%	55.8%	75.5%	56.8%	63.6%	63.4%					
Pell	14	19	24	21	19	19	20	24	14	18	11	17	8	16	12	8
Pell 1 Year Retention	78.6%	78.9%	87.5%	85.7%	73.7%	78.9%	80.0%	83.3%	92.9%	83.3%	90.9%	64.7%	87.5%	93.8%	66.7%	75.0%
Pell 6 Year Graduation	28.6%	52.6%	58.3%	66.7%	73.7%	47.4%	45.0%	79.2%	64.3%	44.4%	54.5%					
URM	3	2	3	3	1	3	1	6	2	1	6	5	3	6	5	7
URM 1 Year Retention	33.3%	100.0%	66.7%	33.3%	100.0%	66.7%	100.0%	83.3%	50.0%	100.0%	100.0%	20.0%	100.0%	66.7%	60.0%	100.0%
URM 6 Year Graduation	33.3%	100.0%	33.3%	0.0%	0.0%	33.3%	100.0%	66.7%	100.0%	0.0%	66.7%					

- Retention and Graduation are to ANY major - not necessarily the primary major at entry.
- Pell is based on having a Pell grant at any point as an undergraduate, not just in term of entry.
- URM is standard federal Underrepresented Minority definition: American Indian/Alaska Native, Black or African American, Hispanic, Native Hawaiian/Pacific Islander

## Retention and Graduation Rates by College of Entering Primary Major

### Liberal Arts

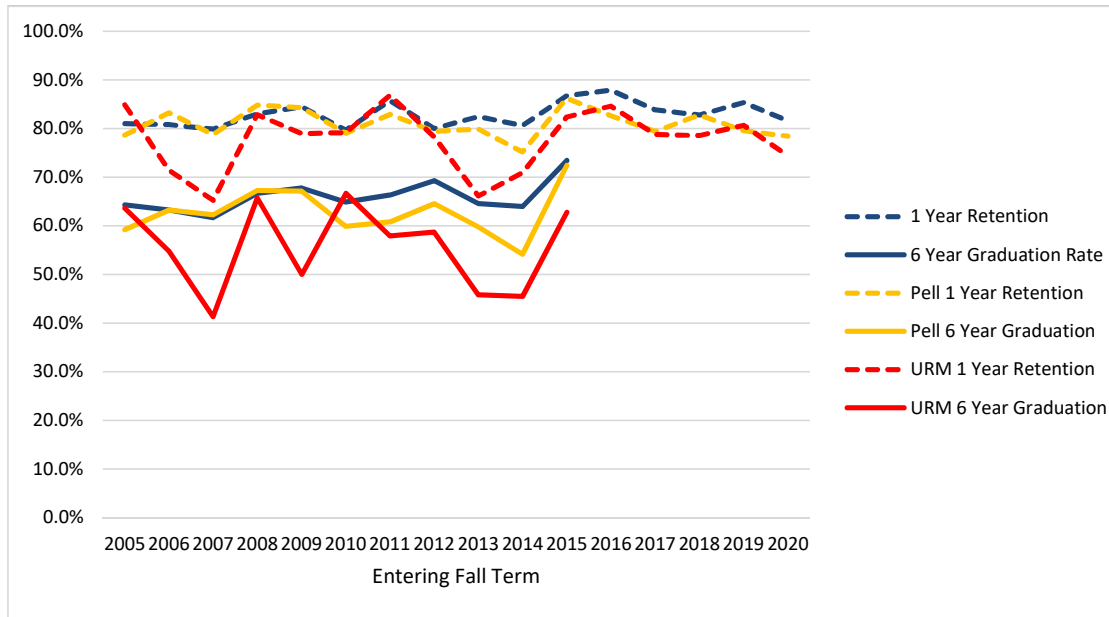


Entering Fall Term	2005	2006	2007	2008	2009	2010	2011	2012	2013	2014	2015	2016	2017	2018	2019	2020
Cohort	299	304	352	329	395	386	341	278	336	296	285	363	299	298	321	319
1 Year Retention	79.9%	78.3%	82.1%	86.0%	78.7%	75.9%	81.5%	82.0%	81.5%	81.4%	76.8%	81.0%	76.6%	80.5%	81.6%	82.8%
6 Year Graduation Rate	55.2%	58.9%	58.8%	59.6%	54.9%	56.0%	63.6%	62.9%	65.2%	65.2%	62.1%					
Pell	97	96	132	144	152	151	153	141	129	118	97	111	104	93	84	88
Pell 1 Year Retention	80.4%	76.0%	87.9%	88.9%	80.3%	69.5%	73.2%	80.1%	79.1%	78.0%	71.1%	78.4%	70.2%	72.0%	79.8%	77.3%
Pell 6 Year Graduation	48.5%	57.3%	59.8%	54.9%	51.3%	49.7%	49.7%	58.9%	62.8%	58.5%	49.5%					
URM	43	30	46	42	51	55	48	42	35	49	51	55	55	44	59	62
URM 1 Year Retention	83.7%	93.3%	71.7%	88.1%	76.5%	72.7%	75.0%	78.6%	65.7%	85.7%	66.7%	80.0%	72.7%	77.3%	86.4%	83.9%
URM 6 Year Graduation	51.2%	70.0%	47.8%	50.0%	49.0%	50.9%	47.9%	59.5%	57.1%	61.2%	56.9%					

- Retention and Graduation are to ANY major - not necessarily the primary major at entry.
- Pell is based on having a Pell grant at any point as an undergraduate, not just in term of entry.
- URM is standard federal Underrepresented Minority definition: American Indian/Alaska Native, Black or African American, Hispanic, Native Hawaiian/Pacific Islander

## Retention and Graduation Rates by College of Entering Primary Major

### Public Health and Human Sciences



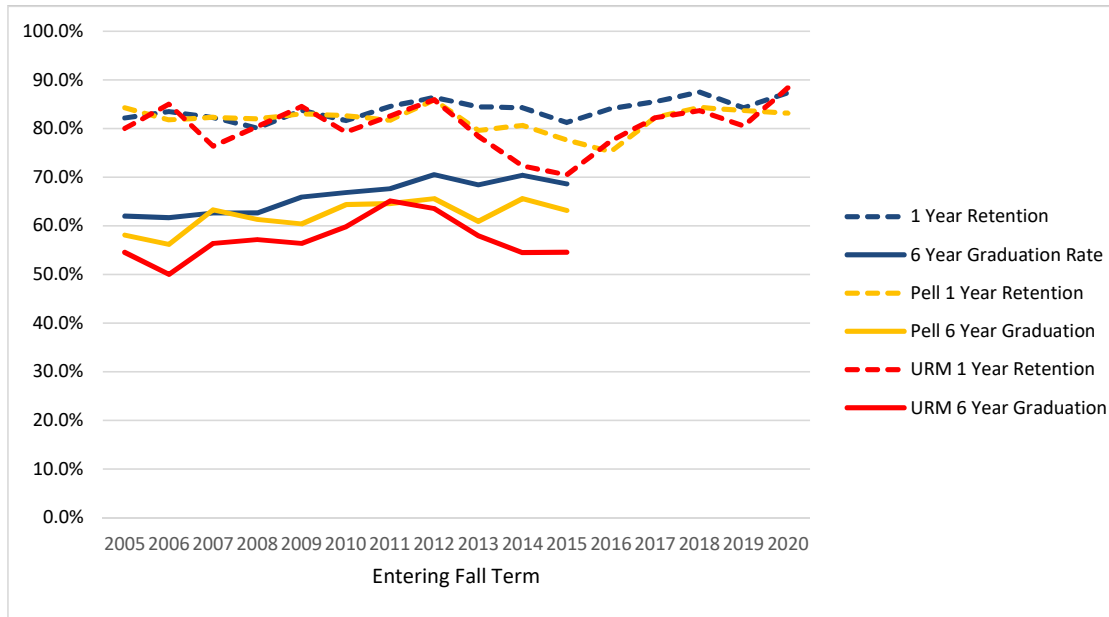
Entering Fall Term	2005	2006	2007	2008	2009	2010	2011	2012	2013	2014	2015	2016	2017	2018	2019	2020
Cohort	358	364	378	318	406	418	407	355	364	330	286	297	247	226	191	190
1 Year Retention	81.0%	80.8%	79.9%	83.0%	84.5%	79.7%	85.7%	80.0%	82.4%	80.6%	86.7%	87.9%	83.8%	82.7%	85.3%	81.6%
6 Year Graduation Rate	64.2%	63.2%	61.6%	66.7%	67.7%	64.8%	66.3%	69.3%	64.6%	63.9%	73.4%					
Pell	103	125	127	125	146	157	181	141	134	133	116	92	68	58	44	51
Pell 1 Year Retention	78.6%	83.2%	78.7%	84.8%	84.2%	79.0%	82.9%	79.4%	79.9%	75.2%	86.2%	82.6%	79.4%	82.8%	79.5%	78.4%
Pell 6 Year Graduation	59.2%	63.2%	62.2%	67.2%	67.1%	59.9%	60.8%	64.5%	59.7%	54.1%	72.4%					
URM	33	42	46	35	38	48	38	46	59	55	51	52	47	28	31	43
URM 1 Year Retention	84.8%	71.4%	65.2%	82.9%	78.9%	79.2%	86.8%	78.3%	66.1%	70.9%	82.4%	84.6%	78.7%	78.6%	80.6%	74.4%
URM 6 Year Graduation	63.6%	54.8%	41.3%	65.7%	50.0%	66.7%	57.9%	58.7%	45.8%	45.5%	62.7%					

- Retention and Graduation are to ANY major - not necessarily the primary major at entry.
- Pell is based on having a Pell grant at any point as an undergraduate, not just in term of entry.
- URM is standard federal Underrepresented Minority definition: American Indian/Alaska Native, Black or African American, Hispanic, Native Hawaiian/Pacific Islander



## Retention and Graduation Rates by College of Entering Primary Major

### Science

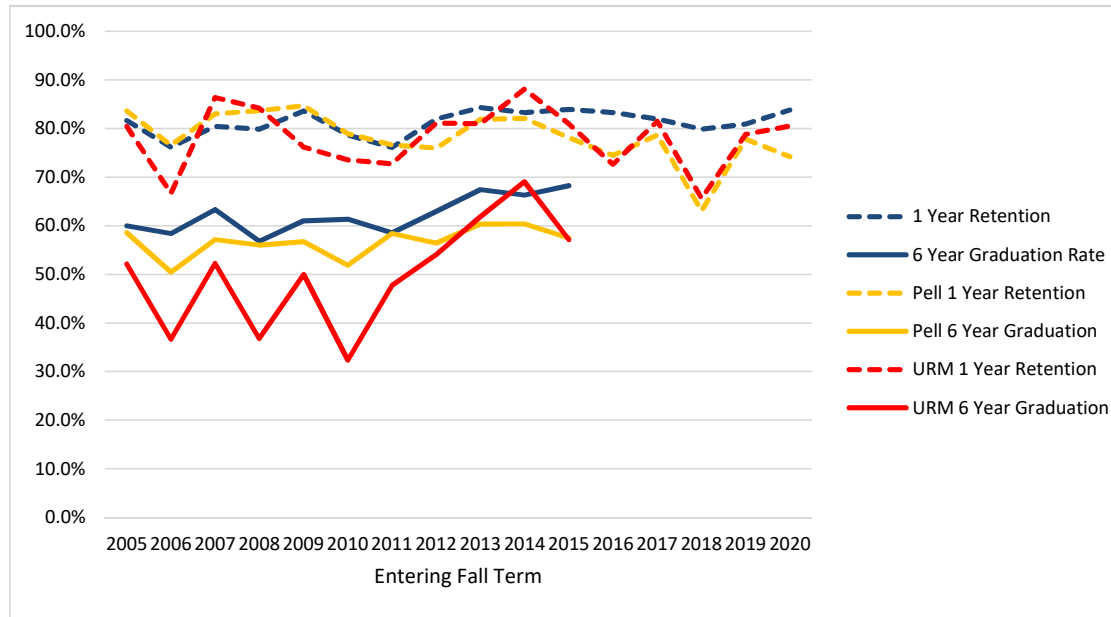


Entering Fall Term	2005	2006	2007	2008	2009	2010	2011	2012	2013	2014	2015	2016	2017	2018	2019	2020
Cohort	515	545	607	653	751	778	732	661	677	712	660	677	676	695	649	600
1 Year Retention	82.1%	83.5%	82.2%	80.1%	83.8%	81.6%	84.6%	86.4%	84.5%	84.3%	81.2%	84.0%	85.5%	87.5%	84.3%	87.3%
6 Year Graduation Rate	61.9%	61.7%	62.6%	62.6%	65.9%	66.8%	67.6%	70.5%	68.4%	70.4%	68.6%					
Pell	210	203	237	261	318	339	361	276	294	305	255	214	220	185	159	166
Pell 1 Year Retention	84.3%	81.8%	82.3%	82.0%	83.0%	82.6%	81.7%	85.9%	79.6%	80.7%	77.6%	75.2%	82.3%	84.3%	83.6%	83.1%
Pell 6 Year Graduation	58.1%	56.2%	63.3%	61.3%	60.4%	64.3%	64.5%	65.6%	60.9%	65.6%	63.1%					
URM	55	40	55	56	71	82	86	85	88	101	88	102	107	98	123	103
URM 1 Year Retention	80.0%	85.0%	76.4%	80.4%	84.5%	79.3%	82.6%	85.9%	78.4%	72.3%	70.5%	77.5%	82.2%	83.7%	80.5%	88.3%
URM 6 Year Graduation	54.5%	50.0%	56.4%	57.1%	56.3%	59.8%	65.1%	63.5%	58.0%	54.5%	54.5%					

- Retention and Graduation are to ANY major - not necessarily the primary major at entry.
- Pell is based on having a Pell grant at any point as an undergraduate, not just in term of entry.
- URM is standard federal Underrepresented Minority definition: American Indian/Alaska Native, Black or African American, Hispanic, Native Hawaiian/Pacific Islander

## Retention and Graduation Rates by College of Entering Primary Major

### University Exploratory Studies

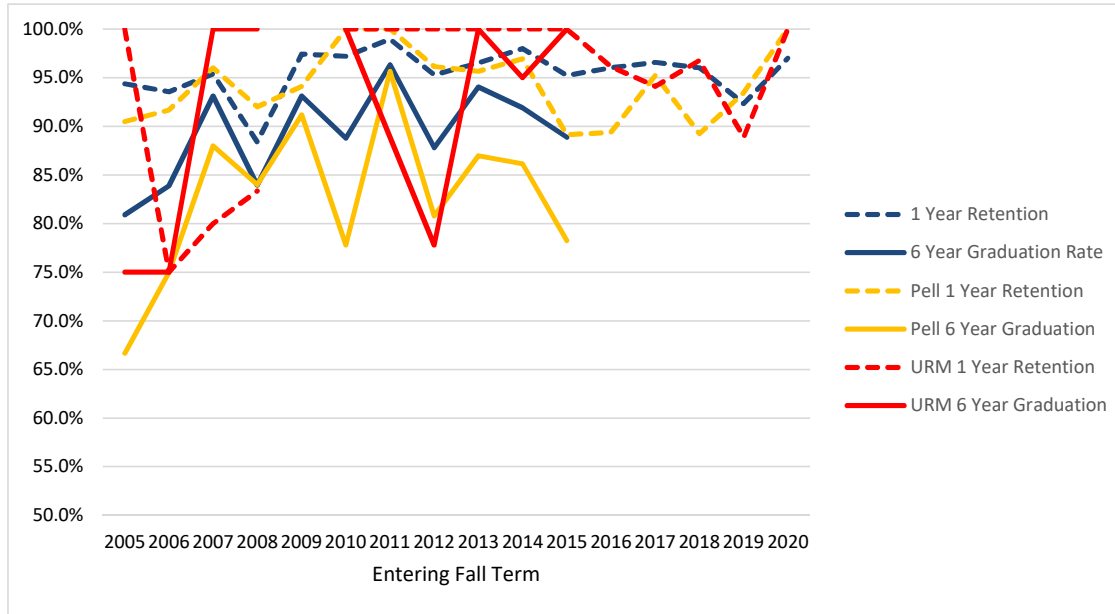


Entering Fall Term	2005	2006	2007	2008	2009	2010	2011	2012	2013	2014	2015	2016	2017	2018	2019	2020
Cohort	375	315	322	338	341	347	364	332	325	347	318	287	310	268	220	241
1 Year Retention	81.6%	76.2%	80.4%	79.9%	83.6%	78.7%	76.1%	81.9%	84.3%	83.3%	84.0%	83.3%	81.9%	79.9%	80.9%	83.8%
6 Year Graduation Rate	60.0%	58.4%	63.4%	56.8%	61.0%	61.4%	58.5%	63.0%	67.4%	66.3%	68.2%					
Pell	128	111	112	141	111	133	137	133	116	106	87	90	89	65	45	62
Pell 1 Year Retention	83.6%	76.6%	83.0%	83.7%	84.7%	78.9%	76.6%	75.9%	81.9%	82.1%	78.2%	74.4%	78.7%	63.1%	77.8%	74.2%
Pell 6 Year Graduation	58.6%	50.5%	57.1%	56.0%	56.8%	51.9%	58.4%	56.4%	60.3%	60.4%	57.5%					
URM	46	30	44	38	42	34	44	37	42	42	42	62	54	32	33	41
URM 1 Year Retention	80.4%	66.7%	86.4%	84.2%	76.2%	73.5%	72.7%	81.1%	81.0%	88.1%	81.0%	72.6%	81.5%	65.6%	78.8%	80.5%
URM 6 Year Graduation	52.2%	36.7%	52.3%	36.8%	50.0%	32.4%	47.7%	54.1%	61.9%	69.0%	57.1%					

- Retention and Graduation are to ANY major - not necessarily the primary major at entry.
- Pell is based on having a Pell grant at any point as an undergraduate, not just in term of entry.
- URM is standard federal Underrepresented Minority definition: American Indian/Alaska Native, Black or African American, Hispanic, Native Hawaiian/Pacific Islander

## Retention and Graduation Rates

### University Honors College

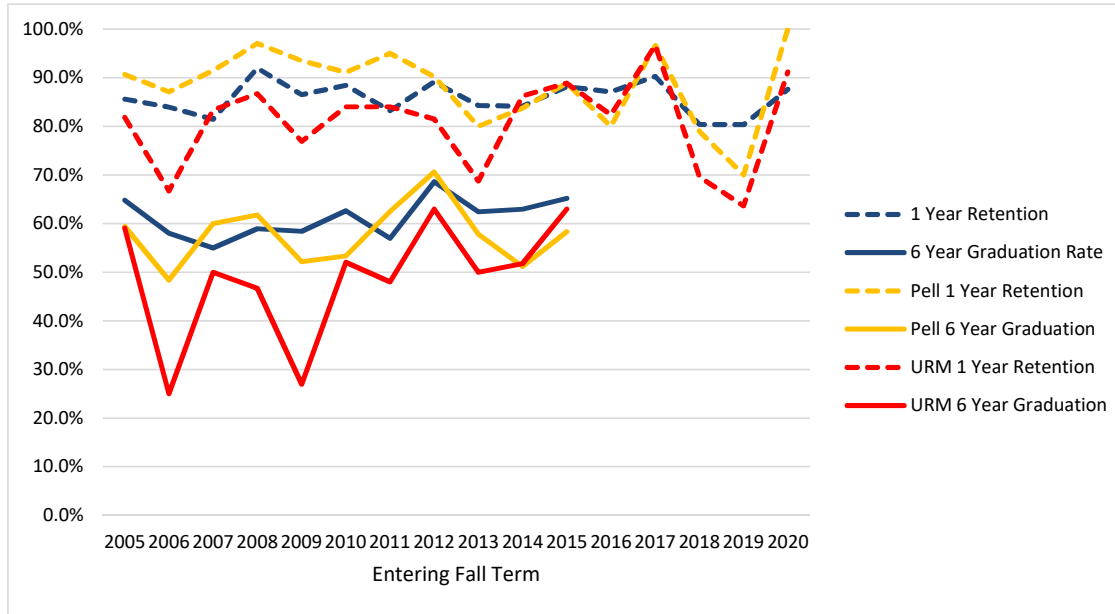


Entering Fall Term	2005	2006	2007	2008	2009	2010	2011	2012	2013	2014	2015	2016	2017	2018	2019	2020
Cohort	89	62	87	112	116	178	190	213	201	296	252	352	378	451	418	466
1 Year Retention	94.4%	93.5%	95.4%	88.4%	97.4%	97.2%	98.9%	95.3%	96.5%	98.0%	95.2%	96.0%	96.6%	96.0%	92.3%	97.0%
6 Year Graduation Rate	80.9%	83.9%	93.1%	83.9%	93.1%	88.8%	96.3%	87.8%	94.0%	91.9%	88.9%					
Pell	21	12	25	25	34	45	46	52	46	65	46	47	63	65	61	69
Pell 1 Year Retention	90.5%	91.7%	96.0%	92.0%	94.1%	100.0%	100.0%	96.2%	95.7%	96.9%	89.1%	89.4%	95.2%	89.2%	93.4%	100.0%
Pell 6 Year Graduation	66.7%	75.0%	88.0%	84.0%	91.2%	77.8%	95.7%	80.8%	87.0%	86.2%	78.3%					
URM	4	4	5	6	0	8	9	9	12	20	15	26	34	31	45	63
URM 1 Year Retention	100.0%	75.0%	80.0%	83.3%		100.0%	100.0%	100.0%	100.0%	100.0%	100.0%	96.2%	94.1%	96.8%	88.9%	100.0%
URM 6 Year Graduation	75.0%	75.0%	100.0%	100.0%		100.0%	88.9%	77.8%	100.0%	95.0%	100.0%					

- Based on Honors College identifier in first fall term
- These students are also counted in their respective entering college

## Retention and Graduation Rates

### Student Athletes



Entering Fall Term	2005	2006	2007	2008	2009	2010	2011	2012	2013	2014	2015	2016	2017	2018	2019	2020
Cohort	125	112	151	112	178	147	137	156	165	170	135	163	133	158	61	113
1 Year Retention	85.6%	83.9%	81.5%	92.0%	86.5%	88.4%	83.2%	89.1%	84.2%	84.1%	88.1%	87.1%	90.2%	80.4%	80.3%	87.6%
6 Year Graduation Rate	64.8%	58.0%	55.0%	58.9%	58.4%	62.6%	56.9%	68.6%	62.4%	62.9%	65.2%					
Pell	32	31	35	34	46	45	40	51	45	43	36	35	30	19	10	9
Pell 1 Year Retention	90.6%	87.1%	91.4%	97.1%	93.5%	91.1%	95.0%	90.2%	80.0%	83.7%	88.9%	80.0%	96.7%	78.9%	70.0%	100.0%
Pell 6 Year Graduation	59.4%	48.4%	60.0%	61.8%	52.2%	53.3%	62.5%	70.6%	57.8%	51.2%	58.3%					
URM	22	12	30	15	26	25	25	27	32	29	27	34	30	23	11	34
URM 1 Year Retention	81.8%	66.7%	83.3%	86.7%	76.9%	84.0%	84.0%	81.5%	68.8%	86.2%	88.9%	82.4%	96.7%	69.6%	63.6%	91.2%
URM 6 Year Graduation	59.1%	25.0%	50.0%	46.7%	26.9%	52.0%	48.0%	63.0%	50.0%	51.7%	63.0%					

- Based on Athlete identifier in first fall term
- These students are also counted in their respective entering college.

**Oregon State University**  
**Retention and Graduation Rates for Cohorts: Fall 2005 to Fall 2020**  
**University Rates for Cohorts\***

Year	Cohort	1 Yr Retained	2 Yr Retained	2 Yr Graduated	3 Yr Retained	3 Yr Graduated	4 Yr Retained	4 Yr Graduated	5 Yr Retained	5 Yr Graduated	6 Yr Retained	6 Yr Graduated
2005	2794	2259 80.9%	1993 71.3%	0 0.0%	1881 67.3%	35 1.3%	1000 35.8%	793 28.4%	251 9.0%	1519 54.4%	107 3.8%	1696 60.7%
2006	2782	2263 81.3%	2012 72.3%	0 0.0%	1867 67.1%	31 1.1%	984 35.4%	814 29.3%	294 10.6%	1500 53.9%	117 4.2%	1680 60.4%
2007	2972	2401 80.8%	2142 72.1%	3 0.1%	2036 68.5%	42 1.4%	1065 35.8%	878 29.5%	276 9.3%	1647 55.4%	92 3.1%	1826 61.4%
2008	3003	2483 82.7%	2214 73.7%	3 0.1%	2076 69.1%	50 1.7%	1081 36.0%	922 30.7%	331 11.0%	1685 56.1%	102 3.4%	1896 63.1%
2009	3314	2753 83.1%	2483 74.9%	4 0.1%	2319 70.0%	50 1.5%	1163 35.1%	1072 32.3%	305 9.2%	1925 58.1%	92 2.8%	2130 64.3%
2010	3480	2834 81.4%	2569 73.8%	4 0.1%	2410 69.3%	43 1.2%	1154 33.2%	1145 32.9%	312 9.0%	1995 57.3%	104 3.0%	2204 63.3%
2011	3335	2777 83.3%	2528 75.8%	2 0.1%	2341 70.2%	67 2.0%	1147 34.4%	1110 33.3%	305 9.1%	1975 59.2%	122 3.7%	2179 65.3%
2012	3321	2796 84.2%	2558 77.0%	3 0.1%	2401 72.3%	66 2.0%	1095 33.0%	1223 36.8%	317 9.5%	2029 61.1%	132 4.0%	2226 67.0%
2013	3553	2976 83.8%	2701 76.0%	7 0.2%	2495 70.2%	79 2.2%	1228 34.6%	1238 34.8%	313 8.8%	2149 60.5%	102 2.9%	2384 67.1%
2014	3449	2926 84.8%	2703 78.4%	4 0.1%	2537 73.6%	82 2.4%	1071 31.1%	1403 40.7%	273 7.9%	2198 63.7%	88 2.6%	2391 69.3%
2015	3338	2783 83.4%	2574 77.1%	1 0.0%	2378 71.2%	88 2.6%	1013 30.3%	1355 40.6%	250 7.5%	2125 63.7%	95 2.8%	2276 68.2%
2016	3523	2989 84.8%	2742 77.8%	6 0.2%	2539 72.1%	112 3.2%	937 26.6%	1631 46.3%	236 6.7%	2334 66.3%		
2017	3421	2879 84.2%	2684 78.5%	5 0.1%	2461 71.9%	122 3.6%	910 26.6%	1608 47.0%				
2018	3341	2853 85.4%	2644 79.1%	9 0.3%	2416 72.3%	153 4.6%						
2019	3042	2572 84.5%	2410 79.2%	18 0.6%								
2020	3125	2711 86.8%										

Cohort: first-time college, full-time degree seeking undergraduates admitted for fall term or preceding summer term.

First-time: never matriculated as degree-seeking students at another college or university.

Full-time: enrolled in 12 or more credit hours in first fall term.

Retained: enrolled in a subsequent fall term but not yet graduated.

Graduated: received first bachelor's degree by the summer before the given following fall term.

Example, 6 year graduation counts degrees earned up to the summer before the seventh fall term.