

## Enrollment Summary Winter Term 2015



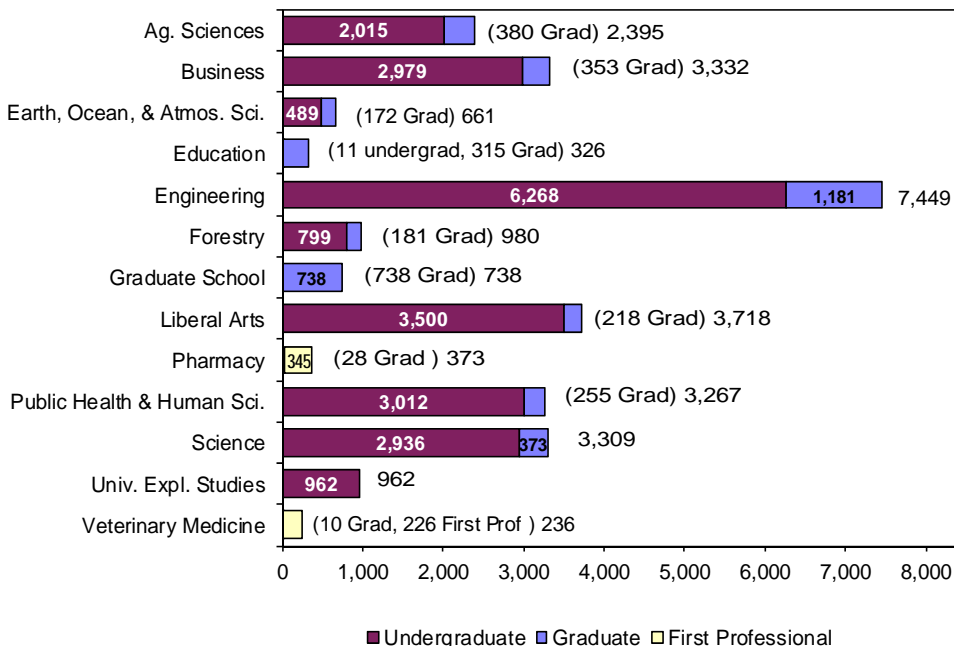
Office of Institutional Research • No. 13 • February 2015 • <http://oregonstate.edu/admin/aa/ir/enrollmentdemographic-reports>

### Enrollment at-a-Glance

	2014	2015	Change	% Change	*Winter Term uses the OUS definition, which excludes credit hours and FTE for students who withdrew from courses before the 4th week. Agribusiness credits at EOU are also not included.
Total Enrollment (Headcount)	26,963	27,746	783	2.9%	
Total Student FTE *	23,827.3	24,202.9	375.6	1.6%	
Total Student Credit Hours*	337,399	342,678	5,279	1.6%	

	2014		2015		Change	
	Headcount	Percent	Headcount	Percent	Headcount	Percent
Women	12,544	46.5%	12,855	46.3%	311	2.5%
Men	14,419	53.5%	14,891	53.7%	472	3.3%
Full-Time	21,119	78.3%	21,157	76.3%	38	0.2%
Part-Time	5,844	21.7%	6,589	23.7%	745	12.7%
Undergraduate	22,351	82.9%	22,971	82.8%	620	2.8%
Graduate	4,032	15.0%	4,204	15.2%	172	4.3%
First Professional	580	2.2%	571	2.1%	-9	-1.6%
U.S. Minorities	5,532	20.5%	6,069	21.9%	537	9.7%
Oregon Residents Total	17,093	63.4%	17,076	61.5%	-17	-0.1%
Undergraduate	15,457	57.3%	15,455	55.7%	-2	0.0%
Graduate	1,203	4.5%	1,190	4.3%	-13	-1.1%
First Professional	433	1.6%	431	1.6%	-2	-0.5%
Non-Residents Total	9,870	36.6%	10,670	38.5%	800	8.1%
Undergraduate	6,894	25.6%	7,516	27.1%	622	9.0%
Graduate	2,829	10.5%	3,014	10.9%	185	6.5%
First Professional	147	0.5%	140	0.5%	-7	-4.8%
International	2,844	10.5%	3,116	11.2%	272	9.6%
Undergrad < 25	17,965	66.6%	18,248	65.8%	283	1.6%
Undergrad 25 and Older	4,386	16.3%	4,723	17.0%	337	7.7%
Graduate < 25	1,043	3.9%	1,027	3.7%	-16	-1.5%
Graduate 25 and Older	2,989	11.1%	3,177	11.5%	188	6.3%
First Professional < 25	221	0.8%	218	0.8%	-3	-1.4%
First Professional 25 and Older	359	1.3%	353	1.3%	-6	-1.7%

### Enrollment by Academic Unit\* and Student Level



### Index

	Page
Academic Unit.....	1 – 5, 7 – 10
Age.....	1
Cascade Campus	
Enrollment.....	11 & 12
Class Standing.....	5 – 6, 8, 10
Extended Campus.....	8 – 9
Full Time, Part Time.....	1, 6
Gender.....	1, 5 – 7, 10
Highlights.....	13
International.....	1, 7
Major.....	2 – 4
Residency.....	1, 6, 8
Student Level.....	1 – 7, 9
University Honors College.....	10
U.S. Minorities/ Ethnicity.....	1, 7, 9

\*Unduplicated headcount based upon student's primary college.

## Enrollment by Major

This section counts each major for students with multiple or double degree majors; headcounts are duplicated across college and university totals.

ACADEMIC UNIT	UNDER-GRAD	GRAD	TOTAL	ACADEMIC UNIT	UNDER-GRAD	GRAD	TOTAL
<b><u>College of Agricultural Sciences</u></b>				<b><u>College of Business (Cont.)</u></b>			
Agricultural Business Management	112	-	112	Pre-Business Information Systems	13	-	13
Agricultural Education	-	9	9	Design and Human Environment	-	20	20
Agricultural Sciences <sup>1</sup>	297	1	298	Finance <sup>1</sup>	255	1	256
Animal Science	-	23	23	Pre-Finance	44	-	44
Animal Sciences <sup>1</sup>	384	3	387	Graphic Design	72	-	72
Applied Economics	-	35	35	Pre-Graphic Design	84	-	84
Applied Systematics in Botany	-	1	1	Innovation Management	31	-	31
Bioresource Research <sup>1</sup>	64	1	65	Interior Design	74	-	74
Botany	43	-	43	Pre-Interiors	38	-	38
Botany and Plant Pathology	-	37	37	International Studies	7	-	7
Crop and Soil Science	47	-	47	Management	160	-	160
Crop Science	-	29	29	Pre-Management	17	-	17
Environmental Economics and Policy	62	-	62	Marketing	182	-	182
Fisheries and Wildlife Administration	-	6	6	Pre-Marketing	28	-	28
Fisheries and Wildlife Sciences	579	-	579	Merchandising Management	207	-	207
Fisheries Management	-	29	29	Pre-Merchandising Management	122	-	122
Fisheries Science	-	48	48	Non-Degree Business	47	-	47
Food Science and Technology	224	39	263	<b>TOTAL</b>	<b>3,299</b>	<b>380</b>	<b>3,679</b>
General Agriculture	2	-	2	<b><u>College of Earth, Ocean, and Atmospheric Sciences</u></b>			
Horticulture	216	32	248	Earth Sciences <sup>1</sup>	125	2	127
International Studies	5	-	5	Environmental Sciences	359	-	359
Rangeland Ecology and Management	1	8	9	Geographic Information Science	-	39	39
Rangeland Sciences	9	-	9	Geography	3	24	27
Soil Science	-	22	22	Geology	7	36	43
Sustainability	49	-	49	Geophysics	-	1	1
Toxicology	-	19	19	International Studies	2	-	2
Wildlife Management	-	16	16	Marine Resource Management	-	24	24
Wildlife Science	-	46	46	Ocean, Earth and Atmospheric Sciences	-	48	48
Non-Degree Agricultural Sciences	21	-	21	Oceanography	-	11	11
<b>TOTAL</b>	<b>2,115</b>	<b>404</b>	<b>2,519</b>	Water Conflict Management and Transformation <sup>2</sup>	1	10	11
<b><u>College of Business</u></b>				Non-Degree Earth, Ocean, Atmospheric Science	3	-	3
Accountancy	189	-	189	<b>TOTAL</b>	<b>500</b>	<b>195</b>	<b>695</b>
Pre-Accountancy	45	-	45	<b><u>College of Education</u></b>			
Apparel Design	53	-	53	Adult Education	-	11	11
Pre-Apparel	55	-	55	College Student Services Administration	-	37	37
Business Administration <sup>1</sup>	167	236	403	Counseling	-	80	80
Pre-Business	1,272	-	1,272	Education	56	90	146
Pre-MBA <sup>2</sup>	2	111	113	Pre-Education	321	3	324
Business Administration and Accountancy	-	12	12	Mathematics Education	-	42	42
Business Information Systems	135	-	135	Science Education	-	48	48

ACADEMIC UNIT	UNDER-GRAD	GRAD	TOTAL
<b><u>College of Education (Cont.)</u></b>			
Teaching: Language Arts Education	-	1	1
Teaching: Music Education	-	9	9
<b>TOTAL</b>	<b>377</b>	<b>321</b>	<b>698</b>

### **College of Engineering**

Bioengineering	79	-	79
Pre-Bioengineering	172	-	172
Biological and Ecological Engineering	-	13	13
Chemical Engineering	204	93	297
Pre-Chemical Engineering	388	-	388
Civil Engineering	217	176	393
Pre-Civil Engineering	335	-	335
Computer Science	607	210	817
Pre-Computer Science <sup>1</sup>	1,125	4	1,129
Construction Engineering Management <sup>1</sup>	169	2	171
Pre-Construction Engineering Management	191	-	191
Ecological Engineering	41	-	41
Pre-Ecological Engineering <sup>1</sup>	53	1	54
Electrical and Computer Engineering	325	233	558
Pre-Electrical and Computer Engineering	409	-	409
Energy Systems Engineering	4	-	4
Pre-Energy Systems Engineering	32	-	32
Environmental Engineering	43	41	84
Pre-Environmental Engineering	56	-	56
Pre-General Engineering	191	-	191
Industrial Engineering	134	73	207
Pre-Industrial Engineering	118	-	118
International Studies	17	-	17
Manufacturing Engineering <sup>1</sup>	67	1	68
Pre-Manufacturing Engineering	42	-	42
Materials Science	-	43	43
Mechanical Engineering	395	179	574
Pre-Mechanical Engineering	782	-	782
Medical Physics	-	11	11
Nuclear Engineering	80	41	121
Pre-Nuclear Engineering	101	-	101
Radiation Health Physics	12	59	71
Pre-Radiation Health Physics	17	-	17
Robotics	-	18	18
Non-Degree Pre-Engineering	23	-	23
<b>TOTAL</b>	<b>6,429</b>	<b>1,198</b>	<b>7,627</b>

ACADEMIC UNIT	UNDER-GRAD	GRAD	TOTAL
<b><u>College of Forestry</u></b>			
Forest Ecosystems and Society	-	57	57
Forest Engineering <sup>1</sup>	48	1	49
Forest Engineering - Civil Engineering	1	-	1
Pre-Forest/Civil Engineering	23	-	23
Pre-Forest Engineering	26	-	26
Forest Management	46	-	46
Forest Operations Management	14	-	14
Forest Resources	-	6	6
Forest Science	-	7	7
Forestry	12	-	12
Pre-Forestry	72	-	72
International Studies	4	-	4
Natural Resources	453	45	498
Recreation Resource Management	30	-	30
Renewable Materials	49	-	49
Sustainable Forest Management	-	39	39
Sustainable Natural Resources	-	10	10
Tourism and Outdoor Leadership	7	-	7
Urban Forestry	-	2	2
Wood Science	-	28	28
Non-Degree Forestry <sup>1</sup>	23	1	24
<b>TOTAL</b>	<b>808</b>	<b>196</b>	<b>1,004</b>

### **Graduate School**

College and University Teaching <sup>2</sup>	1	45	46
Comparative Health Sciences	-	9	9
Environmental Sciences	-	31	31
Interdisciplinary Studies	-	42	42
Molecular and Cellular Biology	-	30	30
Water Resources Engineering	-	27	27
Water Resources Policy and Management	-	12	12
Water Resources Science	-	19	19
Non-Degree Graduate Student	-	574	574
<b>TOTAL</b>	<b>1</b>	<b>789</b>	<b>790</b>

### **College of Liberal Arts**

American Studies	3	-	3
Anthropology <sup>1</sup>	248	1	249
Applied Anthropology	-	49	49
Applied Ethics	1	8	9
Applied Visual Arts	75	-	75
Art	27	-	27
Contemporary Hispanic Studies	-	3	3
Creative Writing	-	30	30
Digital Communication Arts	336	-	336
Economics	349	-	349
English	186	27	213
Ethnic Studies	19	-	19
French	18	-	18

ACADEMIC UNIT	UNDER-GRAD	GRAD	TOTAL
<b><u>College of Liberal Arts (Cont.)</u></b>			
German	53	-	53
History	174	-	174
History of Science	-	14	14
International Studies	21	-	21
Liberal Studies	270	-	270
Music	107	-	107
Philosophy	29	-	29
Political Science	235	-	235
Psychology	783	-	783
Public Policy	-	73	73
Social Science	6	-	6
Sociology	365	-	365
Spanish	56	-	56
Speech Communication	82	-	82
Pre-Communication	119	-	119
Women, Gender, and Sexuality Studies	43	20	63
Non-Degree Liberal Arts	80	-	80
<b>TOTAL</b>	<b>3,685</b>	<b>225</b>	<b>3,910</b>

ACADEMIC UNIT	UNDER-GRAD	GRAD	FIRST PROF	TOTAL
<b><u>College of Pharmacy</u></b>				
Pharmaceutical Sciences	-	28	-	28
Pharmacy, Doctor of Pharmacy (4-year)	-	-	345	345
<b>TOTAL</b>	<b>-</b>	<b>28</b>	<b>345</b>	<b>373</b>

ACADEMIC UNIT	UNDER-GRAD	GRAD	FIRST PROF	TOTAL
<b><u>College of Public Health and Human Sciences</u></b>				
Athletic Training	68	0	-	68
Pre-Athletic Training	7	0	-	7
Exercise and Sport Science	1,104	43	-	1,147
Human Development and Family Sciences <sup>1</sup>	1,059	1	-	1,060
Human Development and Family Studies	0	37	-	37
International Studies	5	0	-	5
Nutrition	283	11	-	294
Pre-Public Health	208	0	-	208
Public Health <sup>1</sup>	355	184	-	539
Non-Degree Public Health and Human Sciences	1	0	-	1
<b>TOTAL</b>	<b>3090</b>	<b>276</b>	<b>-</b>	<b>3,366</b>

ACADEMIC UNIT	UNDER-GRAD	GRAD	FIRST PROF	TOTAL
<b><u>College of Science</u></b>				
Biochemistry and Biophysics	185	27	-	212
BioHealth Sciences <sup>1</sup>	417	1	-	418
Biology <sup>1</sup>	849	1	-	850
Chemistry	239	108	-	347
General Science	292	-	-	292
International Studies	18	-	-	18
Management for Science Professionals	-	2	-	2
Mathematics	220	64	-	284
Microbiology <sup>1</sup>	325	35	-	360
Physics	123	44	-	167
Statistics	-	54	-	54
Zoology	235	54	-	289
Non-Degree Science	112	-	-	112
<b>TOTAL</b>	<b>3,015</b>	<b>390</b>	<b>-</b>	<b>3,405</b>

ACADEMIC UNIT	UNDER-GRAD	GRAD	FIRST PROF	TOTAL
<b><u>College of Veterinary Medicine</u></b>				
Veterinary Medicine - DVM	-	-	226	226
Veterinary Science	-	10	-	10
<b>TOTAL</b>	<b>-</b>	<b>10</b>	<b>226</b>	<b>236</b>

ACADEMIC UNIT	UNDER-GRAD	GRAD	FIRST PROF	TOTAL
<b><u>University Exploratory Studies</u></b>				
	<b>962</b>	<b>-</b>	<b>-</b>	<b>962</b>

ACADEMIC UNIT	UNDER-GRAD	GRAD	FIRST PROF	TOTAL
<b><u>University Honors College</u></b>				
Honors Scholar and Honors Associate <sup>3</sup>	970	-	-	970
<b>TOTAL</b>	<b>970</b>	<b>-</b>	<b>-</b>	<b>970</b>

ACADEMIC UNIT	UNDER-GRAD	GRAD	FIRST-PROF	TOTAL
<b>TOTAL UNIVERSITY</b>	<b>24,281</b>	<b>4,412</b>	<b>571</b>	<b>29,264</b>

<sup>1</sup> Includes graduate/first professional students also pursuing an undergraduate degree.

<sup>2</sup> Includes undergraduate post baccalaureate students also pursuing a graduate program/certificate.

<sup>3</sup> Honors Scholars and Honors Associates are not counted in the University total.

<b>Degree Programs with the Highest Enrollment (Last Year's Rank)</b>	
<b>Undergraduate</b>	
1. Computer Science* (2)	1,732
2. Business Administration* (1)	1,449
3. Mechanical Engineering* (3)	1,177
4. Exercise and Sport Science (5)	1,104
5. Human Development and Family Sciences (4)	1,059
6. Biology (6)	849
7. Psychology (7)	783
8. Electrical and Computer Engineering* (8)	734
9. Chemical Engineering* (11)	592
10. Fisheries and Wildlife Sciences (16)	579
*Includes Pre-Professional	
<b>Graduate</b>	
1. Business Administration* (1)	347
2. Electrical and Computer Engineering (2)	233
3. Computer Science (4)	210
4. Public Health (3)	184
5. Mechanical Engineering (6)	179
6. Civil Engineering (5)	176
7. Chemistry (7)	108
8. Chemical Engineering (9)	93
8. Education (8)	90
10. Counseling (12)	80
*Includes Pre-MBA	
<b>First Professional</b>	
1. Pharmacy, Doctor of Pharmacy (4-year)	345
2. Veterinary Medicine - DVM	226

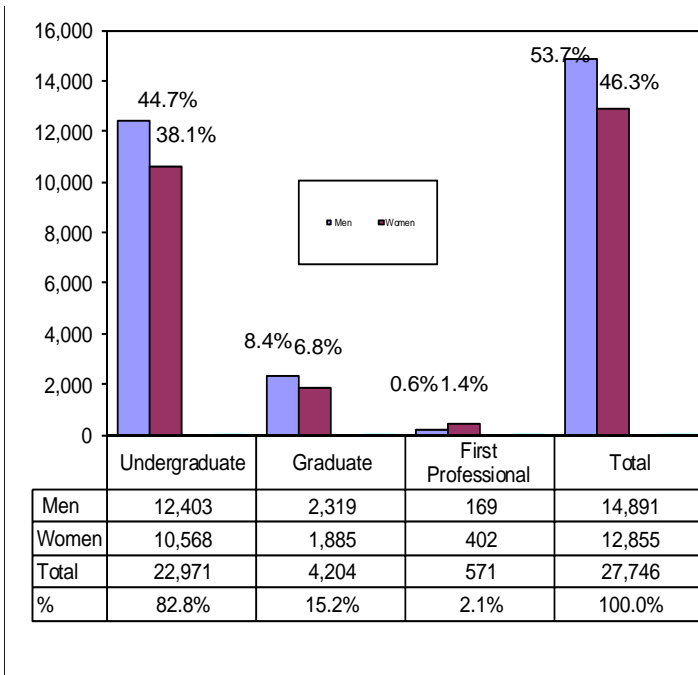
## Student Enrollment By Academic Unit and Student Class Standing

Academic Unit	Freshman	Sophomore	Junior	Senior	Post Bac	Non-Degree Undergrad	Undergrad Total	Master	Doctorate	Non-Degree Grad	Grad Total	First Professional	TOTAL
AG	187	335	541	781	146	25	2,015	179	167	34	380	-	2,395
BUS	509	719	665	885	17	184	2,979	222	19	112	353	-	3,332
EOAS	41	65	124	228	28	3	489	61	80	31	172	-	661
ED	-	-	-	-	11	-	11	174	141	-	315	-	326
ENGR	955	1,254	1,157	1,826	964	112	6,268	585	448	148	1,181	-	7,449
FOR	61	113	195	371	33	26	799	107	63	11	181	-	980
LA	362	630	952	1,370	92	94	3,500	176	42	-	218	-	3,718
PHARM	-	-	-	-	-	-	-	1	27	-	28	345	373
PHHS	395	573	888	1,103	49	4	3,012	134	95	26	255	-	3,267
SCI	561	667	609	917	54	128	2,936	67	305	1	373	-	3,309
VM	-	-	-	-	-	-	-	10	-	-	10	226	236
GRAD	-	-	-	-	-	-	-	92	73	573	738	-	738
UESP	406	257	59	15	-	225	962	-	-	-	-	-	962
<b>Total 2015</b>	<b>3,477</b>	<b>4,613</b>	<b>5,190</b>	<b>7,496</b>	<b>1,394</b>	<b>801</b>	<b>22,971</b>	<b>1,808</b>	<b>1,460</b>	<b>936</b>	<b>4,204</b>	<b>571</b>	<b>27,746</b>
<b>Total 2014</b>	<b>3,624</b>	<b>4,311</b>	<b>5,138</b>	<b>7,552</b>	<b>1,002</b>	<b>724</b>	<b>22,351</b>	<b>1,736</b>	<b>1,390</b>	<b>906</b>	<b>4,032</b>	<b>580</b>	<b>26,963</b>

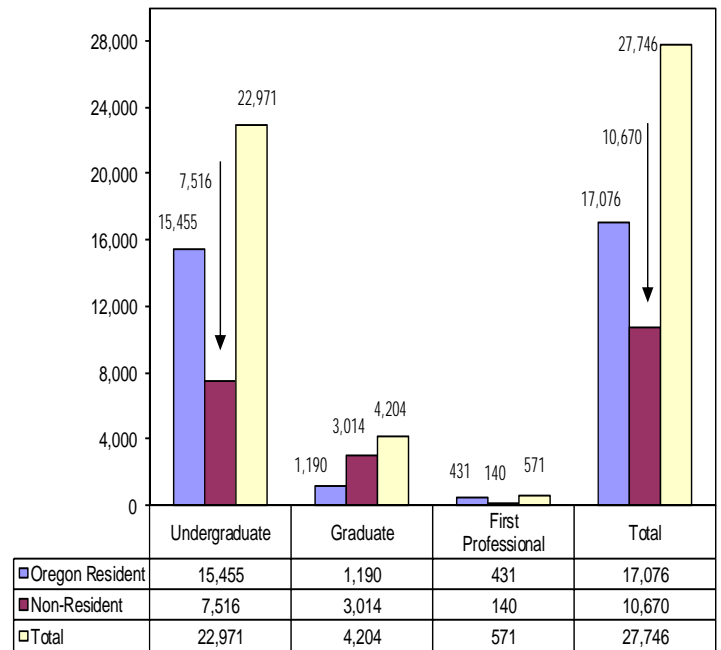
## By Academic Unit, Gender, and Student Level

Academic Unit	Undergraduate				Graduate				First Professional				Total	%
	Men	Women	Total	% of Univ.	Men	Women	Total	% of Univ.	Men	Women	Total	% of Univ.		
AG	852	1,163	2,015	7.3%	178	202	380	1.4%	-	-	-	-	2,395	8.6%
BUS	1,594	1,385	2,979	10.7%	185	168	353	1.3%	-	-	-	-	3,332	12.0%
EOAS	227	262	489	1.8%	81	91	172	0.6%	-	-	-	-	661	2.4%
ED	3	8	11	0.0%	96	219	315	1.1%	-	-	-	-	326	1.2%
ENGR	5,171	1,097	6,268	22.6%	942	239	1,181	4.3%	-	-	-	-	7,449	26.8%
FOR	489	310	799	2.9%	108	73	181	0.7%	-	-	-	-	980	3.5%
LA	1,470	2,030	3,500	12.6%	75	143	218	0.8%	-	-	-	-	3,718	13.4%
PHARM	-	-	-	0.0%	20	8	28	0.1%	135	210	345	1.2%	373	1.3%
PHHS	813	2,199	3,012	10.9%	73	182	255	0.9%	-	-	-	-	3,267	11.8%
SCI	1,296	1,640	2,936	10.6%	241	132	373	1.3%	-	-	-	-	3,309	11.9%
VM	-	-	-	0.0%	1	9	10	0.0%	34	192	226	0.8%	236	0.9%
GRAD	-	-	-	0.0%	319	419	738	2.7%	-	-	-	-	738	2.7%
UESP	488	474	962	3.5%	-	-	-	0.0%	-	-	-	-	962	3.5%
<b>Total 2015</b>	<b>12,403</b>	<b>10,568</b>	<b>22,971</b>	<b>82.8%</b>	<b>2,319</b>	<b>1,885</b>	<b>4,204</b>	<b>15.2%</b>	<b>169</b>	<b>402</b>	<b>571</b>	<b>2.1%</b>	<b>27,746</b>	<b>100.0%</b>
<b>Total 2014</b>	<b>12,078</b>	<b>10,273</b>	<b>22,351</b>	<b>82.9%</b>	<b>2,169</b>	<b>1,863</b>	<b>4,032</b>	<b>15.0%</b>	<b>172</b>	<b>408</b>	<b>580</b>	<b>2.2%</b>	<b>26,963</b>	<b>100.0%</b>

## Enrollment by Gender and Student Level



## By Residency\* and Student Level

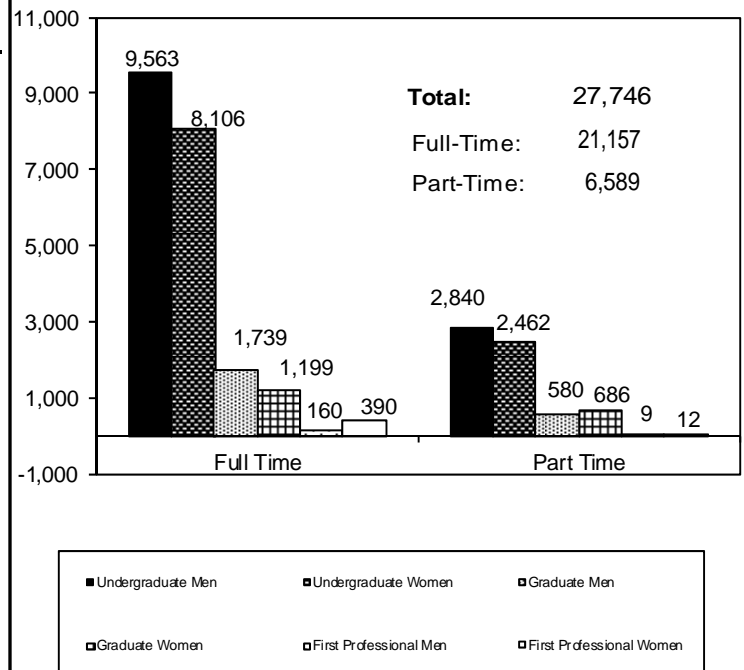


\* Residency is based upon tuition and fee status.

## Enrollment, Credit Hours, and FTE by Class Standing

Class Standing	Student Enrollment	Student Credit Hours	Student FTE
Freshman	3,477	48,283	3,218.9
Sophomore	4,613	61,878	4,125.2
Junior	5,190	67,101	4,473.4
Senior	7,496	94,770	6,318.0
Post Baccalaureate	1,394	10,536	702.4
Non-Degree Undergrad	801	7,545	503.0
<b>Total for Undergraduate</b>	<b>22,971</b>	<b>290,113</b>	<b>19,340.9</b>
Masters	1,808	18,927	1,577.3
Doctoral	1,460	17,338	1,926.4
Non-Degree Graduate	936	6,860	571.7
<b>Total for Graduate</b>	<b>4,204</b>	<b>43,125</b>	<b>4,075.4</b>
Doctor of Pharmacy	345	5,380	448.3
Veterinary Medicine	226	4,060	338.3
<b>Total for First Professional</b>	<b>571</b>	<b>9,440</b>	<b>786.7</b>
<b>GRAND TOTAL</b>	<b>27,746</b>	<b>342,678</b>	<b>24,202.9</b>

## Student Enrollment Full Time and Part Time, by Gender



**Minority Enrollment**  
**U.S. Minorities by Academic Unit and Student Level**

Academic Unit	American Indian/ Native American				Asian/ Pacific Islander				Black				Hispanic				Two or More Races			
	Under-Grad	Grad	First Prof.	Total	Under-Grad	Grad	First Prof.	Total	Under-Grad	Grad	First Prof.	Total	Under-Grad	Grad	First Prof.	Total	Under-Grad	Grad	First Prof.	Total
Ag. Sciences	23	2	-	25	35	2	-	37	19	4	-	23	131	19	-	150	111	11	-	122
Business	16	-	-	16	165	11	-	176	33	2	-	35	204	6	-	210	180	7	-	187
Earth, Ocean, and Atmos_ Sci	6	-	-	6	13	3	-	16	1	1	-	2	26	14	-	40	31	5	-	36
Education	-	3	-	3	-	19	-	19	-	14	-	14	1	26	-	27	-	12	-	12
Engineering	23	-	-	23	570	29	-	599	64	6	-	70	395	22	-	417	347	18	-	365
Forestry	5	-	-	5	12	3	-	15	1	1	-	2	33	3	-	36	35	2	-	37
Graduate School	-	4	-	4	-	31	-	31	-	20	-	20	-	35	-	35	-	32	-	32
Liberal Arts	23	1	-	24	143	2	-	145	66	2	-	68	316	29	-	345	247	10	-	257
Pharmacy	-	-	1	1	-	1	123	124	-	-	3	3	-	1	11	12	-	-	26	26
Public Health and Human Sci	25	3	-	28	232	18	-	250	49	8	-	57	341	21	-	362	210	10	-	220
Science	17	2	-	19	454	24	-	478	33	4	-	37	279	11	-	290	207	8	-	215
Univ. Explor. Studies	3	-	-	3	54	-	-	54	23	-	-	23	85	-	-	85	71	-	-	71
Vet. Medicine	-	-	2	2	-	1	8	9	-	-	-	-	-	-	9	9	-	-	5	5
<b>Total</b>	<b>141</b>	<b>15</b>	<b>3</b>	<b>159</b>	<b>1,678</b>	<b>144</b>	<b>131</b>	<b>1,953</b>	<b>289</b>	<b>62</b>	<b>3</b>	<b>354</b>	<b>1,811</b>	<b>187</b>	<b>20</b>	<b>2,018</b>	<b>1,439</b>	<b>115</b>	<b>31</b>	<b>1,585</b>

**Enrollment by Academic Unit, Ethnicity, and Student Level**

Academic Unit	Total U.S. Minority				White				International*				Declined/Missing				TOTAL			
	Under-Grad	Grad	First Prof.	Total	Under-Grad	Grad	First Prof.	Total	Under-Grad	Grad	First Prof.	Total	Under-Grad	Grad	First Prof.	Total	Under-Grad	Grad	First Prof.	Total
Ag. Sciences	319	38	-	357	1,586	253	-	1,839	51	77	-	128	59	12	-	71	2,015	380	-	2,395
Business	598	26	-	624	1,787	84	-	1,871	532	238	-	770	62	5	-	67	2,979	353	-	3,332
Earth, Ocean, and Atmos_ Sci	77	23	-	100	379	115	-	494	9	24	-	33	24	10	-	34	489	172	-	661
Education	1	74	-	75	9	227	-	236	-	2	-	2	1	12	-	13	11	315	-	326
Engineering	1,399	75	-	1,474	3,885	376	-	4,261	805	693	-	1,498	179	37	-	216	6,268	1,181	-	7,449
Forestry	86	9	-	95	665	125	-	790	15	37	-	52	33	10	-	43	799	181	-	980
Graduate School	-	122	-	122	-	512	-	512	-	48	-	48	-	56	-	56	-	738	-	738
Liberal Arts	795	44	-	839	2,458	131	-	2,589	129	35	-	164	118	8	-	126	3,500	218	-	3,718
Pharmacy	-	2	164	166	-	6	160	166	-	18	8	26	-	2	13	15	-	28	345	373
Public Health and Human Sci	857	60	-	917	2,056	157	-	2,213	49	28	-	77	50	10	-	60	3,012	255	-	3,267
Science	990	49	-	1,039	1,786	211	-	1,997	113	100	-	213	47	13	-	60	2,936	373	-	3,309
Univ. Explor. Studies	236	-	-	236	597	-	-	597	100	-	-	100	29	-	-	29	962	-	-	962
Vet. Medicine	-	1	24	25	-	6	178	184	-	3	2	5	-	-	22	22	-	10	226	236
<b>Total</b>	<b>5,358</b>	<b>523</b>	<b>188</b>	<b>6,069</b>	<b>15,208</b>	<b>2,203</b>	<b>338</b>	<b>17,749</b>	<b>1,803</b>	<b>1,303</b>	<b>10</b>	<b>3,116</b>	<b>602</b>	<b>175</b>	<b>35</b>	<b>812</b>	<b>22,971</b>	<b>4,204</b>	<b>571</b>	<b>27,746</b>

\*International students are identified by citizenship code. Students with unknown visa type are not included in International counts.

## OSU Extended Campus

### Enrollment, Credit Hours, and FTE by Class Standing

Students Who Took Courses Through Ecampus\*

Class Standing	Student Enrollment	Student Credit Hours	Student FTE
Freshman	491	1,982	132.1
Sophomore	1,175	5,069	337.9
Junior	1,938	10,307	687.1
Senior	2,945	16,714	1,114.3
Post Baccalaureate	1,170	7,717	514.5
Non-Degree Undergrad	360	1,356	90.4
<b>Total for Undergraduate</b>	<b>8,079</b>	<b>43,145</b>	<b>2,876.3</b>
Masters	356	1,452	121.0
Doctoral	155	664	73.8
Non-Degree Graduate	592	2,396	199.7
<b>Total for Graduate</b>	<b>1,103</b>	<b>4,512</b>	<b>394.4</b>
Doctor of Pharmacy	5	12	1.0
Veterinary Medicine	1	-	-
<b>Total for First Professional</b>	<b>6</b>	<b>12</b>	<b>1.0</b>
<b>GRAND TOTAL (Winter 2015)</b>	<b>9,188</b>	<b>47,669</b>	<b>3,271.8</b>
(Winter 2014)	7,999	41,334	2,839.8

\*Table indicates students enrolled in courses offered not only through Ecampus, but also courses at OSU-Corvallis.

### Enrollment by Class Standing and Residency

Students Who Took Courses Only Through Ecampus\*\*

Class Standing	Oregon Resident	Non-Resident	Total
Freshman	27	62	89
Sophomore	120	120	240
Junior	358	331	689
Senior	568	618	1,186
Post Baccalaureate	192	810	1,002
Non-Degree Undergrad	40	266	306
<b>Total for Undergraduate</b>	<b>1,305</b>	<b>2,207</b>	<b>3,512</b>
Masters	107	122	229
Doctoral	46	61	107
Non-Degree Graduate	98	414	512
<b>Total for Graduate</b>	<b>251</b>	<b>597</b>	<b>848</b>
Doctor of Pharmacy	0	0	0
Veterinary Medicine	0	0	0
<b>Total for First Professional</b>	<b>0</b>	<b>0</b>	<b>0</b>
<b>GRAND TOTAL (Winter 2015)</b>	<b>1,556</b>	<b>2,804</b>	<b>4,360</b>
(Winter 2014)	1,452	2,271	3,723

\*\*Table indicates students enrolled in only Ecampus-offered courses; i.e., students are not enrolled in any OSU-Corvallis on-campus courses.

## Student Credit Hours by Academic Unit\* and Class Standing

Academic Unit*	Freshman	Sophomore	Junior	Senior	Post Bac	Non-Degree Undergrad	Undergrad Total	Master	Doctorate	Non-Degree Grad	Grad Total	First Professional	TOTAL
AG	187	680	1,547	3,569	397	106	6,486	178	69	472	719	-	7,205
BUS	18	188	418	724	28	2	1,378	127	-	20	147	12	1,537
EOAS	103	254	500	814	98	20	1,789	56	8	117	181	-	1,970
ED	-	-	-	-	-	3	3	530	537	68	1,135	-	1,138
ENGR	25	360	526	577	6,173	23	7,684	233	7	68	308	-	7,992
FOR	36	99	237	687	98	30	1,187	124	-	114	238	-	1,425
LA	968	2,351	4,265	6,455	496	641	15,176	138	27	362	527	-	15,703
PHHS	173	396	1,339	1,798	77	16	3,799	30	3	256	289	-	4,088
SCI	456	737	1,432	1,996	327	510	5,458	11	4	901	916	-	6,374
ALS**	16	4	34	22	12	2	90	-	-	2	2	-	92
IP***	-	-	6	51	3	3	63	-	-	-	-	-	63
GRAD	-	-	3	21	8	-	32	25	9	16	50	-	82
<b>Total SCH</b>	<b>1,982</b>	<b>5,069</b>	<b>10,307</b>	<b>16,714</b>	<b>7,717</b>	<b>1,356</b>	<b>43,145</b>	<b>1,452</b>	<b>664</b>	<b>2,396</b>	<b>4,512</b>	<b>12</b>	<b>47,669</b>
<b>Total FTE</b>	<b>132.1</b>	<b>337.9</b>	<b>687.1</b>	<b>1,114.3</b>	<b>514.5</b>	<b>90.4</b>	<b>2,876.3</b>	<b>121.0</b>	<b>73.8</b>	<b>199.7</b>	<b>394.4</b>	<b>1.0</b>	<b>3,271.8</b>

\*Academic Units are those that offered the courses. \*\*Academic Learning Services. \*\*\*Interdisciplinary Programs.



### OSU Extended Campus Student Enrollment by Academic Unit and Ethnicity

All Students Who Took Courses Through ECampus

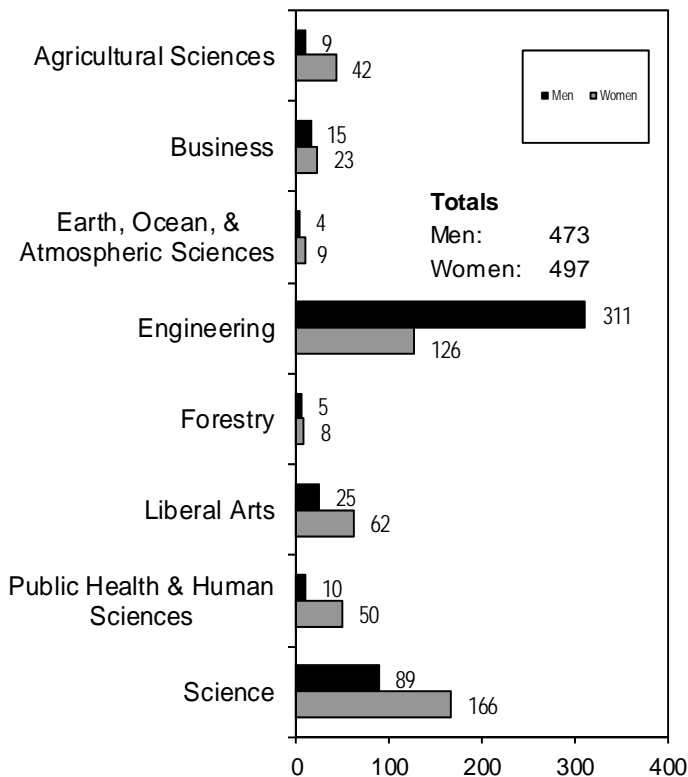
Acad. Unit	American Indian /Alaskan Native		Asian /Pacific Islander		Black		Hispanic		Two or More Races		White		International		Declined to Respond / Missing		TOTAL	
	Under-grad	Grad Total	Under-grad	Grad Total	Under-grad	Grad Total	Under-grad	Grad Total	Under-grad	Grad Total	Under-grad	Grad Total	Under-grad	Grad Total	Under-grad	Grad Total	Under-grad	Grad Total
AG	15	- 15	7	1 8	8	- 8	58	5 63	54	4 58	824	59 883	15	7 22	39	1 40	1,020	77 1,097
BUS	4	- 4	34	4 38	11	1 12	42	2 44	46	- 46	417	23 440	138	5 143	26	1 27	718	36 754
EOAS	3	- 3	7	- 7	-	-	19	3 22	15	1 16	183	28 211	3	1 4	16	1 17	246	34 280
ED	-	2 2	-	15 15	-	13 13	-	16 16	-	8 8	1	166 167	-	-	-	9 9	1	229 230
ENGR	3	- 3	192	3 195	32	- 32	91	3 94	86	2 88	1,142	54 1,196	241	25 266	76	3 79	1,863	90 1,953
FOR	3	- 3	6	1 7	1	- 1	21	2 23	19	- 19	347	56 403	1	2 3	25	5 30	423	66 489
GRAD	-	2 2	-	22 22	-	19 19	-	23 23	-	22 22	-	359 359	-	10 10	-	45 45	-	502 502
LA	12	- 12	54	- 54	40	- 40	127	3 130	110	1 111	1,169	9 1,178	57	2 59	79	- 79	1,648	15 1,663
PHARM*	-	-	-	4 4	-	-	-	-	-	-	2	2 2	-	1 1	-	-	-	7 7
PHHS	11	- 11	69	3 72	26	2 28	96	5 101	64	2 66	767	28 795	21	5 26	20	1 21	1,074	46 1,120
SCI	5	- 5	84	- 84	11	- 11	60	- 60	43	- 43	498	5 503	31	- 31	16	1 17	748	6 754
UESP	3	- 3	22	- 22	13	- 13	24	- 24	27	- 27	208	- 208	20	- 20	21	- 21	338	- 338
V/M*	-	-	-	-	-	1 1	-	-	-	-	-	-	-	-	-	-	-	1 1
<b>Total</b>	<b>59</b>	<b>4 63</b>	<b>475</b>	<b>53 528</b>	<b>142</b>	<b>36 178</b>	<b>538</b>	<b>62 600</b>	<b>464</b>	<b>40 504</b>	<b>5,556</b>	<b>789 6,345</b>	<b>527</b>	<b>58 585</b>	<b>318</b>	<b>67 385</b>	<b>8,079</b>	<b>1,109 9,188</b>

\*First Professional students are included in the graduate totals.

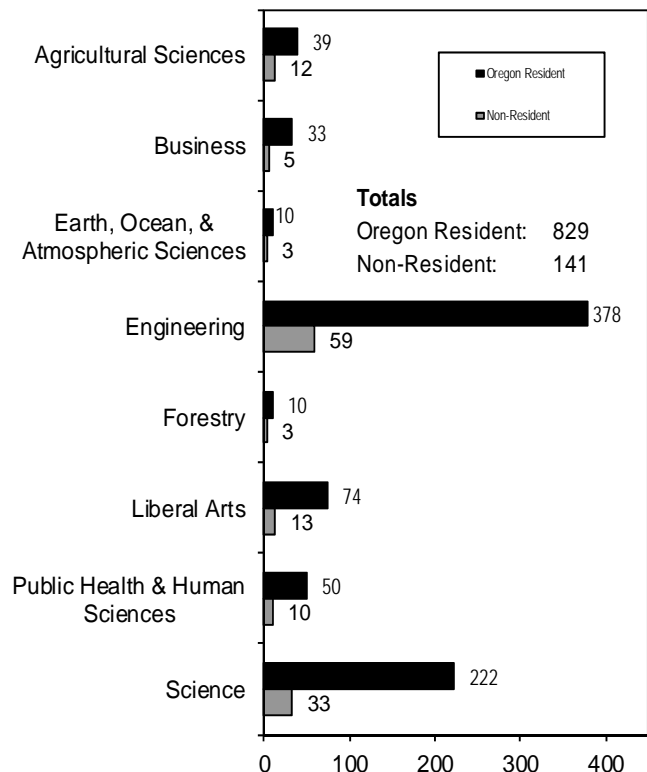
## University Honors College Students By Academic Unit and Student Class Standing

Academic Unit	Freshman	Sophomore	Junior	Senior	Total	% of Undergrad Enrollment for College
Agricultural Sciences	5	10	8	28	51	2.5
Business	4	13	5	16	38	1.3
Earth, Ocean, and Atmospheric Sciences	1	1	3	8	13	2.7
Engineering	49	118	99	171	437	7.0
Forestry	2	3	1	7	13	1.6
Liberal Arts	7	18	21	41	87	2.5
Public Health and Human Sciences	7	11	18	24	60	2.0
Science	20	59	59	117	255	8.7
University Exploratory Studies	7	9	-	-	16	1.7
<b>TOTAL</b>	<b>102</b>	<b>242</b>	<b>214</b>	<b>412</b>	<b>970</b>	<b>4.2</b>

### By Academic Unit and Gender



### By Academic Unit and Residency



## Cascades Campus Enrollment

Winter Term 2015				
Enrollment Type		2014	2015	Change
<b>OSU-Cascades Enrollment*</b>	<b>Headcount</b>	835	899	7.7%
	<b>Term FTE</b>	461.4	513.5	11.3%

<i>COCC Enrolled Students (OSU Admitted)**</i>	<i>Headcount</i>	221	217	-1.8%
	<i>Term FTE</i>	168.7	160.9	-4.6%
<i>Total Students Receiving Services</i>	<i>Headcount</i>	1,056	1,116	5.7%
	<i>Term FTE</i>	630.1	674.4	7.0%

### Oregon State University - Cascades Campus

	2014		2015		Change	
	Headcount	Percent	Headcount	Percent	Headcount	Percent
<b>Gender</b>						
Female	508	60.8%	529	58.8%	21	4.1%
Male	327	39.2%	370	41.2%	43	13.1%
<b>Full-Time, Part-Time</b>						
Full-Time	262	31.4%	330	36.7%	68	26.0%
Part-Time	573	68.6%	569	63.3%	-4	-0.7%
<b>Level</b>						
Undergraduate	699	83.7%	741	82.4%	42	6.0%
Graduate	136	16.3%	158	17.6%	22	16.2%
<b>Residency</b>						
Oregon Residents	801	95.9%	860	95.7%	59	7.4%
Non-Residents	34	4.1%	39	4.3%	5	14.7%
<b>Level and Age Group</b>						
Undergraduate < 25	248	29.7%	286	31.8%	38	15.3%
Undergraduate 25 and older	451	54.0%	455	50.6%	4	0.9%
Graduate 25 and older	117	14.0%	138	15.4%	21	17.9%
Graduate <25	19	2.3%	20	2.2%	1	5.3%
<b>Ethnicity</b>						
Black	2	0.2%	3	0.3%	1	50.0%
American Indian/Alaskan Native	14	1.7%	12	1.3%	-2	-14.3%
Asian / Pacific Islander	13	1.6%	11	1.2%	-2	-15.4%
Hispanic	56	6.7%	61	6.8%	5	8.9%
Two or More Races	33	4.0%	41	4.6%	8	24.2%
<b>Total for U.S. Minorities</b>	118	14.1%	128	14.2%	10	8.5%
White	675	80.8%	711	79.1%	36	5.3%
International	1	0.1%	3	0.3%	2	200.0%
Declined to Respond / Missing	41	4.9%	57	6.3%	16	39.0%
<b>GRAND TOTAL</b>	835	100.0%	899	100.0%	64	7.7%

\*Source: Office of Institutional Research, Oregon State University.

\*\*Source: OSU-Cascades.

Oregon State University - Cascades Campus

<b>Class Standing</b>		<b>2014</b>	<b>2015</b>	<b>Change</b>
Freshman	<b>Headcount</b>	1	4	300.0%
	<b>Credit Hours</b>	4	13	225.0%
	<b>FTE*</b>	0.3	0.9	225.0%
Sophomore	<b>Headcount</b>	31	32	3.2%
	<b>Credit Hours</b>	140	146	4.3%
	<b>FTE*</b>	9.3	9.7	4.3%
Junior	<b>Headcount</b>	249	251	0.8%
	<b>Credit Hours</b>	1,518	1,753	15.5%
	<b>FTE*</b>	101.2	116.9	15.5%
Senior	<b>Headcount</b>	378	419	10.8%
	<b>Credit Hours</b>	3,467	3,958	14.2%
	<b>FTE*</b>	231.1	263.9	14.2%
Postbac Degree Seeking	<b>Headcount</b>	25	22	-12.0%
	<b>Credit Hours</b>	163	131	-19.6%
	<b>FTE*</b>	10.9	8.7	-19.6%
Non-degree Undergraduate	<b>Headcount</b>	15	13	-13.3%
	<b>Credit Hours</b>	52	47	-9.6%
	<b>FTE*</b>	3.5	3.1	-9.6%
<b>Undergraduate Subtotal</b>	<b>Headcount</b>	699	741	6.0%
	<b>Credit Hours</b>	5,344	6,048	13.2%
	<b>FTE*</b>	356.3	403.2	13.2%
Masters	<b>Headcount</b>	129	127	-1.6%
	<b>Credit Hours</b>	1,229	1,238	0.7%
	<b>FTE*</b>	102.4	103.2	0.7%
Non-Degree Graduate	<b>Headcount</b>	7	31	342.9%
	<b>Credit Hours</b>	33	86	160.6%
	<b>FTE*</b>	2.8	7.2	160.6%
<b>Graduate Subtotal</b>	<b>Headcount</b>	136	158	16.2%
	<b>Credit Hours</b>	1,262	1,324	4.9%
	<b>FTE*</b>	105.2	110.3	4.9%
<b>TOTAL</b>	<b>Headcount</b>	835	899	7.7%
	<b>Credit Hours</b>	6,606	7,372	11.6%
	<b>FTE*</b>	461.4	513.5	11.3%

\* FTE divisor: Undergraduate, 15 credits; Graduate, 12 credits

## Highlights

■ When Winter 2014 and Winter 2015 are compared, the total enrollment increased by 783 students, or 2.9% (from 26,963 to 27,746). At the same time, the total student FTE increased by 375.6, or 1.6% (from 23,827.3 to 24,202.9), and the student credit hours increased by 5,279, or 1.6% (from 337,399 to 342,678).

■ When compared to Winter 2014, the undergraduate enrollment increased by 620 students, or 2.8% (from 22,351 to 22,971); the graduate enrollment increased by 4.3% (from 4,032 to 4,204); the first professional enrollment decreased by 1.6% (from 580 to 571).

■ When compared to Winter 2014, Oregon residents decreased by 0.1%; non-residents decreased by 8.1%.

■ International student enrollment increased by 9.6%.

■ For Winter 2015, the percentage of U.S. minority students was 21.9% of the total enrollment. The number of minority students increased by 9.7% when compared to Winter 2014 (from 5,532 to 6,069).

■ The College of Engineering, College of Liberal Arts, and College of Business had the largest student enrollments (7,449, 3,718, and 3,332 respectively) when compared to the other academic units.

■ OSU Extended Campus had 9,188 students, an increase of 14.9% compared to Winter 2014. These students took 47,669 credits, of which 32.9% were from the College of Liberal Arts, while 16.8% were from the College of Engineering.

■ During Winter 2015, a total of 1,116 students received services from OSU Cascades Campus.

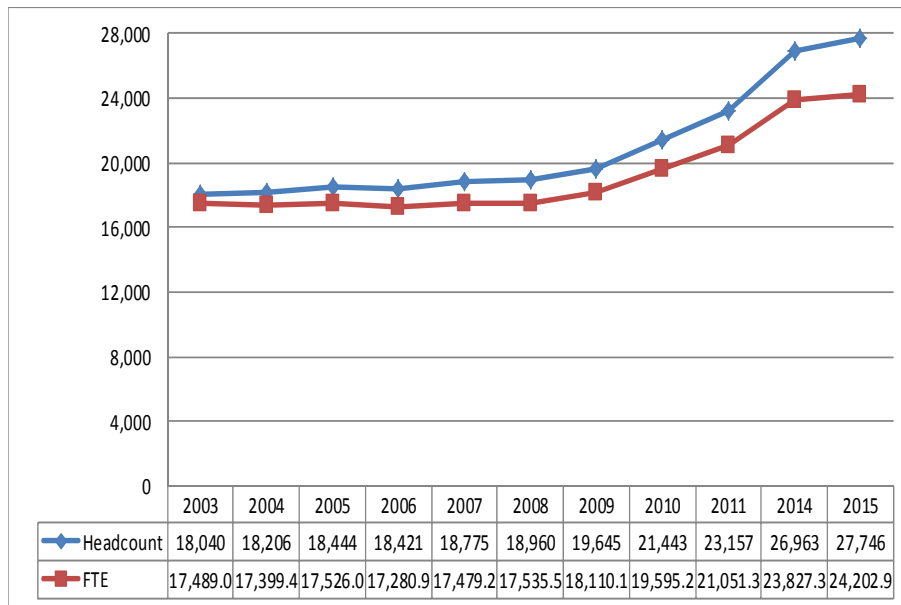
■ Other increases that occurred when comparing Winter 2014 and Winter 2015 are as follows:

- Part-time students: 12.7%
- Undergraduate students age 25 and older: 7.7%
- Graduate students age 25 and older: 6.3%
- Male students: 3.3%
- Female students: 2.5%
- Undergraduate students under age 25: 1.6%
- Full-time students: 0.2%

■ Other decreases that occurred when comparing Winter 2014 and Winter 2015 are as follows:

- First Professional students 25 and older: -1.7%
- Graduate students under age 25: -1.5%
- First Professional students under age 25: -1.4%

## Winter Enrollment Trend 2003-2015



Source: Winter Term 2015, 4th Week Student Data Extract File.  
Comments about this publication are welcome.

Please contact the staff in the Office of Institutional Research, 500 Kerr Administration Building (541-737-9600).