

## Enrollment Summary Winter Term 2010

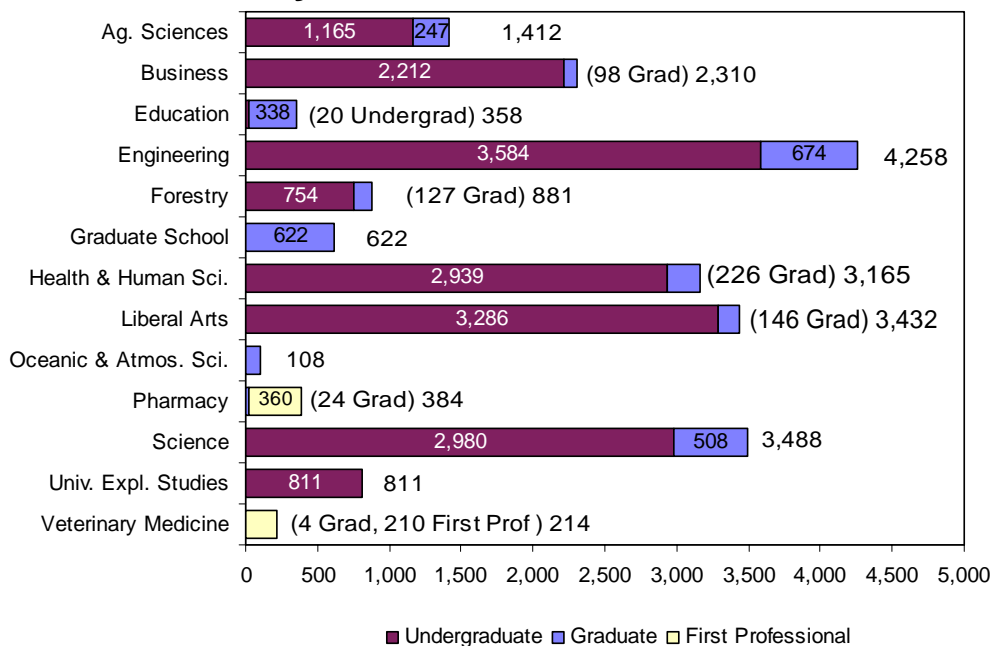


### Enrollment at-a-Glance

	2009	2010	Change	% Change	*Winter Term uses the OUS definition, which excludes credit hours and FTE for students who withdrew from courses before the 4th week. Agribusiness credits at EOUE are also not included.
Total Enrollment (Headcount)	19,645	21,443	1,798	9.2%	
Total Student FTE *	18,110.1	19,598.1	1,488.0	8.2%	
Total Student Credit Hours*	256,280	277,961	21,681	8.5%	

	2009		2010		Change	
	Headcount	Percent	Headcount	Percent	Headcount	Percent
Women	9,311	47.4%	10,241	47.8%	930	10.0%
Men	10,334	52.6%	11,202	52.2%	868	8.4%
Full-Time	16,015	81.5%	17,446	81.4%	1,431	8.9%
Part-Time	3,630	18.5%	3,997	18.6%	367	10.1%
Undergraduate	16,195	82.4%	17,751	82.8%	1,556	9.6%
Graduate	2,904	14.8%	3,122	14.6%	218	7.5%
First Professional	546	2.8%	570	2.7%	24	4.4%
U.S. Minorities	3,083	15.7%	3,414	15.9%	331	10.7%
Oregon Residents	15,388	78.3%	16,263	75.8%	875	5.7%
Non-Residents	4,257	21.7%	5,180	24.2%	923	21.7%
International	925	4.7%	1,162	5.4%	237	25.6%
Undergrad < 25	13,895	70.7%	14,959	69.8%	1,064	7.7%
Undergrad 25 and Older	2,300	11.7%	2,792	13.0%	492	21.4%
Graduate < 25	621	3.2%	640	3.0%	19	3.1%
Graduate 25 and Older	2,283	11.6%	2,482	11.6%	199	8.7%
First Professional < 25	228	1.2%	243	1.1%	15	6.6%
First Professional 25 and Older	318	1.6%	327	1.5%	9	2.8%

### Enrollment by Academic Unit\* and Student Level



### Index

	Page
Academic Unit.....	1 – 5, 7 – 10
Age.....	1
Cascade Campus	
Enrollment.....	11
Class Standing.....	5 – 6, 8, 10
Extended Campus.....	8 – 9
Full Time, Part Time.....	1, 6
Gender.....	1, 5 – 7, 10
Highlights.....	12
International.....	1, 7
Major.....	2 – 4
Residency.....	1, 6, 8
Student Level.....	1 – 7, 9
University Honors College.....	10
U.S. Minorities/ Ethnicity.....	1, 7, 9

\*Unduplicated headcount based upon student's primary college.

## Enrollment by Major

The Enrollment by Major includes duplicate headcount totals for Colleges and the University. Included in the totals are students who have indicated a dual major or double degree program; e.g., Primary Major 1, Primary Major 2, Secondary Major 1, and Secondary Major 2; e.g., a first professional student could also have a secondary undergraduate major.

ACADEMIC UNIT	UNDER-GRAD	GRAD	TOTAL
<b><u>College of Agricultural Sciences</u></b>			
Agricultural and Resource Economics	-	19	19
Agricultural Business Management	100	-	100
Agricultural Education	-	9	9
Animal Science	-	15	15
Animal Sciences	359	-	359
Bioresource Research	43	-	43
Crop Science	-	19	19
Crop Science and Soil Science	36	-	36
Economics <sup>1</sup>	-	1	1
Environmental Economics, Policy and Management	24	-	24
Fisheries and Wildlife	279	-	279
Fisheries Science	-	44	44
Food Science and Technology	108	29	137
General Agriculture	117	1	118
Horticulture	107	20	127
International Studies	1	-	1
Master of Agriculture	-	1	1
Rangeland Ecology and Management	22	9	31
Soil Science	-	16	16
Toxicology	-	21	21
Wildlife Science	-	39	39
Non-Degree Agricultural Sciences	15	9	24
<b>TOTAL</b>	<b>1,211</b>	<b>252</b>	<b>1,463</b>

<sup>1</sup>Joint program with CLA, FOR, AG.

<b><u>College of Business</u></b>			
Accountancy	162	-	162
Accounting	5	-	5
Business Administration	630	92	722
Business Administration (Grad)	-	11	11
Finance	63	-	63
International Studies	3	-	3
Management	33	-	33
Marketing	61	-	61
Pre-Business	1,324	-	1,324
Non-Degree Business	31	-	31
<b>TOTAL</b>	<b>2,312</b>	<b>103</b>	<b>2,415</b>

<b><u>College of Education</u></b>			
Adult Education	-	46	46
College Student Services Administration	-	46	46
Counseling	-	72	72
Education	125	128	253
Pre-Education	1,120	9	1,129
Teaching: Elementary Education	-	53	53

ACADEMIC UNIT	UNDER-GRAD	GRAD	TOTAL
<b><u>College of Education (Cont.)</u></b>			
Teaching: Music Education	-	5	5
<b>TOTAL</b>	<b>1,245</b>	<b>359</b>	<b>1,604</b>

<b><u>College of Engineering</u></b>			
Bioengineering	50	-	50
Pre-Bioengineering	74	-	74
Biological and Ecological Engineering	-	22	22
Bioresource Engineering	-	1	1
Chemical Engineering	124	56	180
Pre-Chemical Engineering	189	-	189
Civil Engineering	217	71	288
Pre-Civil Engineering	290	-	290
Computer Engineering	7	-	7
Computer Science	189	102	291
Pre-Computer Science	222	-	222
Construction Engineering Management	196	9	205
Pre-Construction Engineering Management	190	-	190
Ecological Engineering	13	-	13
Pre-Ecological Engineering	30	-	30
Electrical and Computer Engineering	205	156	361
Pre-Electrical and Computer Engineering	323	-	323
Electrical and Electronics Engineering	16	-	16
Pre-Electrical Engineering	2	-	2
Engineering Physics	13	-	13
Pre-Engineering Physics	22	-	22
Environmental Engineering	23	-	23
Pre-Environmental Engineering	61	-	61
Pre-General Engineering	107	-	107
Industrial Engineering	96	43	139
Pre-Industrial Engineering	71	-	71
International Studies	4	-	4
Manufacturing Engineering	37	-	37
Pre-Manufacturing Engineering	10	-	10
Materials Science	-	29	29
Mechanical Engineering	300	68	368
Pre-Mechanical Engineering	429	-	429
Medical Physics	-	4	4
Nuclear Engineering	47	25	72
Pre-Nuclear Engineering	70	-	70
Ocean Engineering	-	9	9
Radiation Health Physics	13	88	101
Pre-Radiation Health Physics	17	-	17
Non-Degree Pre-Engineering	18	5	23
<b>TOTAL</b>	<b>3,675</b>	<b>688</b>	<b>4,363</b>

ACADEMIC UNIT	UNDER-GRAD	GRAD	TOTAL
<b><u>College of Forestry</u></b>			
Forest Engineering	52	16	68
Forest Engineering - Civil Engineering	7	-	7
Pre-Forest/Civil Engineering	35	-	35
Forest Management	125	-	125
Forest Operations Management	41	-	41
Forest Products	-	1	1
Forest Recreation Resources	2	-	2
Forest Resources	-	43	43
Forest Science	-	34	34
International Studies	1	-	1
Natural Resources	389	-	389
Outdoor Recreation Leadership and Tourism	4	-	4
Recreation Resource Management	51	-	51
Sustainable Natural Resources	-	10	10
Tourism and Outdoor Leadership	9	-	9
Wood Science	-	25	25
Wood Science and Technology	22	-	22
Non-Degree Forestry	24	7	31
Undecided Forestry	1	-	1
<b>TOTAL</b>	<b>763</b>	<b>136</b>	<b>899</b>

<b><u>Graduate School</u></b>			
Applied Economics	-	12	12
Economics	-	7	7
Environmental Science	-	47	47
Interdisciplinary Studies	-	53	53
Molecular and Cellular Biology	-	47	47
Water Resources Engineering	-	23	23
Water Resources Policy and Management	-	8	8
Water Resources Science	-	18	18
Non-Degree Graduate Student	-	492	492
<b>TOTAL</b>	<b>-</b>	<b>707</b>	<b>707</b>

<b><u>College of Health and Human Sciences</u></b>			
Apparel Design	68	-	68
Pre-Apparel	101	-	101
Design and Human Environment	-	26	26
Exercise and Sport Science	930	48	978
Health Management and Policy	40	-	40
Pre-Health Management and Policy	89	-	89
Health Promotion and Health Behavior	239	-	239
Pre-Housing	18	-	18
Housing Studies	59	-	59
Human Development and Family Sciences	764	1	765
Human Development and Family Studies	-	29	29
Human Performance	-	1	1
Interior Design	129	-	129
Pre-Interiors	65	-	65

ACADEMIC UNIT	UNDER-GRAD	GRAD	TOTAL
<b><u>College of Health and Human Sciences (Cont.)</u></b>			
International Studies	4	-	4
Merchandising Management	267	1	268
Movement Studies in Disability	-	7	7
Nutrition	258	10	268
Nutrition and Food Management <sup>2</sup>	2	-	2
Public Health	-	100	100
Non-Degree Health and Human Sciences	24	8	32
<b>TOTAL</b>	<b>3,057</b>	<b>231</b>	<b>3,288</b>

<sup>2</sup> Includes First Professional student(s).

<b><u>College of Liberal Arts</u></b>			
American Studies	4	-	4
Anthropology	106	-	106
Applied Anthropology	-	30	30
Applied Ethics	-	5	5
Applied Visual Arts	183	-	183
Art <sup>2</sup>	80	-	80
Contemporary Hispanic Studies	-	6	6
Creative Writing	-	18	18
Economics	71	5	76
English	286	19	305
Ethnic Studies	26	-	26
French <sup>2</sup>	24	-	24
German	53	1	54
History	276	-	276
History of Science	-	8	8
International Studies	9	-	9
Liberal Studies	772	-	772
Music	117	-	117
Philosophy	60	-	60
Political Science	273	-	273
Pre-Communication	151	-	151
Psychology	568	2	570
Public Policy	-	51	51
Sociology	208	-	208
Spanish	112	-	112
Speech Communication <sup>2</sup>	77	-	77
Women Studies	7	-	7
Non-Degree Liberal Arts	49	7	56
<b>TOTAL</b>	<b>3,512</b>	<b>152</b>	<b>3,664</b>

<sup>2</sup> Includes First Professional student(s).

<b><u>College of Oceanic and Atmospheric Sciences</u></b>			
Atmospheric Sciences	-	10	10
Fisheries Management	-	7	7
Geophysics	-	5	5
Marine Resource Management	-	31	31
Oceanography	-	58	58
<b>TOTAL</b>	<b>-</b>	<b>111</b>	<b>111</b>

ACADEMIC UNIT	UNDER-GRAD	GRAD	FIRST PROF	TOTAL
<b><u>College of Pharmacy</u></b>				
Pharmacy	-	24	-	24
Pharmacy, Doctor of Pharmacy (4-year)	-	-	360	360
<b>TOTAL</b>	<b>-</b>	<b>24</b>	<b>360</b>	<b>384</b>

ACADEMIC UNIT	UNDER-GRAD	GRAD	FIRST PROF	TOTAL
<b><u>College of Science</u></b>				
Applied Physics	-	2	-	2
Biochemistry and Biophysics	131	18	-	149
Biology	644	-	-	644
Botany	40	-	-	40
Botany and Plant Pathology	-	33	-	33
Chemistry	176	77	-	253
Computational Physics	9	-	-	9
Earth Science	16	-	-	16
Entomology	-	11	-	11
Environmental Science	305	-	-	305
General Science	941	3	-	944
Geographic Information Science	-	10	-	10
Geography	42	28	-	70
Geology	53	27	-	80
International Studies	20	-	-	20
Mathematical Sciences	10	-	-	10
Mathematics	110	58	-	168
Mathematics Education	-	26	-	26
Microbiology	148	33	-	181
Physics	80	34	-	114
Science Education	-	52	-	52
Statistics	-	35	-	35
Water Conflict Management and Transformation	-	4	-	4
Zoology	232	33	-	265
Non-Degree Science	96	40	-	136
Undecided Science Major	14	-	-	14
<b>TOTAL</b>	<b>3,067</b>	<b>524</b>	<b>-</b>	<b>3,591</b>

ACADEMIC UNIT	UNDER-GRAD	GRAD	FIRST PROF	TOTAL
<b><u>College of Veterinary Medicine</u></b>				
Veterinary Medicine - DVM	-	-	210	210
Veterinary Science	-	4	-	4
<b>TOTAL</b>	<b>-</b>	<b>4</b>	<b>210</b>	<b>214</b>

<b><u>University Exploratory Studies</u></b>				
	<b>813</b>	<b>-</b>	<b>-</b>	<b>813</b>

ACADEMIC UNIT	UNDER-GRAD	GRAD	FIRST PROF	TOTAL
<b><u>University Honors College<sup>3</sup></u></b>				
Honors Scholar and Honors Associate	515	-	-	515
International Studies	2	-	-	2
	<b>517</b>	<b>-</b>	<b>-</b>	<b>517</b>

<sup>3</sup>Honors Scholars and Honors Associates are not counted in the University total.

ACADEMIC UNIT	UNDER-GRAD	GRAD	FIRST-PROF.	TOTAL
<b>TOTAL UNIVERSITY</b>	<b>19,657</b>	<b>3,291</b>	<b>570</b>	<b>23,518</b>

### Degree Programs with the Highest Enrollment (Last Year's Rank)

#### Undergraduate

1. Business Administration* (1)	1,954
2. Education* (2)	1,245
3. General Science (3)	941
4. Exercise and Sport Science (4)	930
5. Liberal Studies (6)	772
6. Human Development and Family Sciences (5)	764
7. Mechanical Engineering* (8)	729
8. Biology (7)	644
9. Psychology (9)	568
10. Electrical and Computer Engineering* (11)	528

\*Includes Pre-Professional

#### Graduate

1. Electrical and Computer Engineering (1)	156
2. Education (2)	137
3. Computer Science (3)	102
4. Public Health (4)	100
5. Business Administration (5)	92
6. Radiation Health Physics (7)	88
7. Chemistry (7)	77
8. Counseling (16)	72
9. Civil Engineering (6)	71
10. Mechanical Engineering (9)	68

#### First Professional

1. Pharmacy, Doctor of Pharmacy (4-year)	360
2. Veterinary Medicine - DVM	210

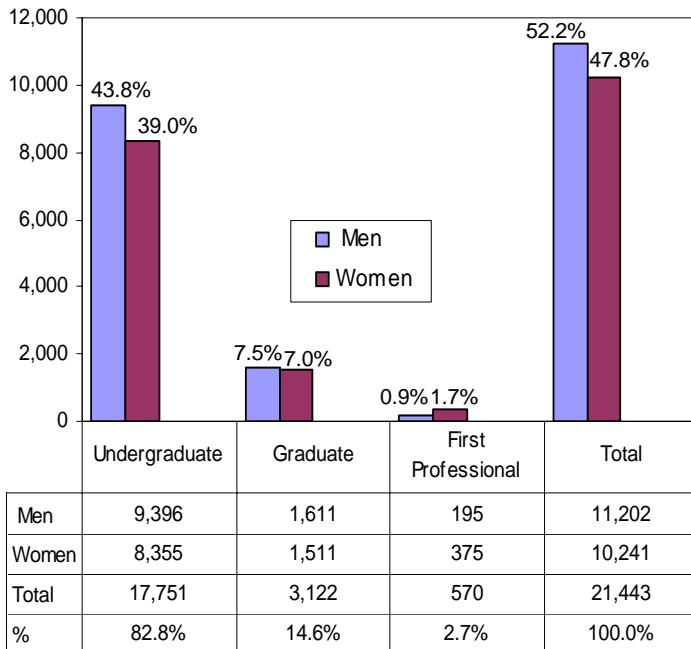
**Student Enrollment  
By Academic Unit and Student Class Standing**

Academic Unit	Freshman	Sophomore	Junior	Senior	Post Bac	Non-Degree Undergrad	Undergrad Total	Master	Doctorate	Non-Degree Grad	Grad Total	First Professional	TOTAL
AG	176	237	284	379	74	15	1,165	132	106	9	247	-	1,412
BUS	443	425	505	711	29	99	2,212	87	-	11	98	-	2,310
ED	-	-	-	-	20	-	20	216	121	1	338	-	358
ENGR	794	755	659	1,268	66	42	3,584	394	276	4	674	-	4,258
FOR	66	96	193	311	64	24	754	56	55	16	127	-	881
HHS	482	698	759	937	39	24	2,939	124	94	8	226	-	3,165
LA	472	600	875	1,249	41	49	3,286	121	18	7	146	-	3,432
OC	-	-	-	-	-	-	-	63	38	7	108	-	108
PHARM	-	-	-	-	-	-	-	3	21	-	24	360	384
SCI	695	614	611	833	119	108	2,980	179	272	57	508	-	3,488
VM	-	-	-	-	-	-	-	4	-	-	4	210	214
GRAD	-	-	-	-	-	-	-	107	98	417	622	-	622
UESP	393	242	61	12	-	103	811	-	-	-	-	-	811
<b>Total 2010</b>	<b>3,521</b>	<b>3,667</b>	<b>3,947</b>	<b>5,700</b>	<b>452</b>	<b>464</b>	<b>17,751</b>	<b>1,486</b>	<b>1,099</b>	<b>537</b>	<b>3,122</b>	<b>570</b>	<b>21,443</b>
<b>Total 2009</b>	<b>3,199</b>	<b>3,375</b>	<b>3,615</b>	<b>5,285</b>	<b>370</b>	<b>351</b>	<b>16,195</b>	<b>1,389</b>	<b>1,049</b>	<b>466</b>	<b>2,904</b>	<b>546</b>	<b>19,645</b>

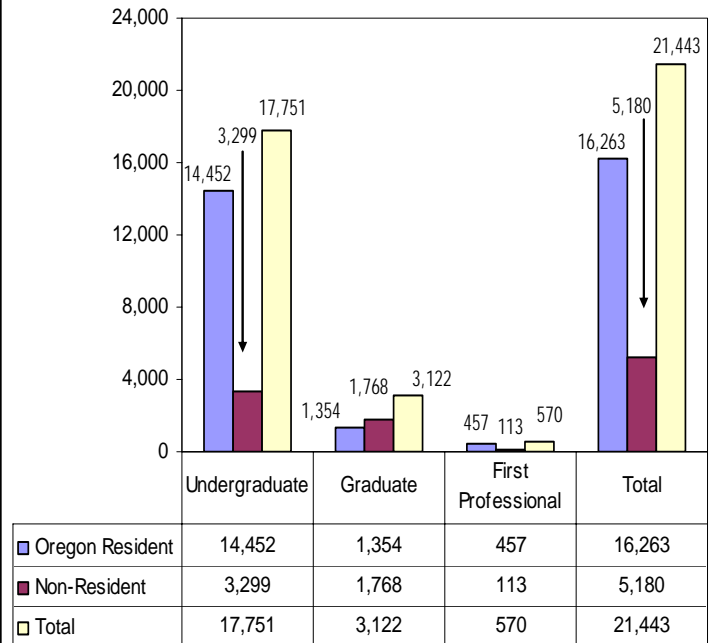
**By Academic Unit, Gender, and Student Level**

Academic Unit	Undergraduate				Graduate				First Professional				Total	%
	Men	Women	Total	% of Univ.	Men	Women	Total	% of Univ.	Men	Women	Total	% of Univ.		
AG	509	656	1,165	5.4%	127	120	247	1.2%	-	-	-	-	1,412	6.6%
BUS	1,456	756	2,212	10.3%	60	38	98	0.5%	-	-	-	-	2,310	10.8%
ED	6	14	20	0.1%	87	251	338	1.6%	-	-	-	-	358	1.7%
ENGR	3,079	505	3,584	16.7%	531	143	674	3.1%	-	-	-	-	4,258	19.9%
FOR	485	269	754	3.5%	76	51	127	0.6%	-	-	-	-	881	4.1%
HHS	681	2,258	2,939	13.7%	59	167	226	1.1%	-	-	-	-	3,165	14.8%
LA	1,443	1,843	3,286	15.3%	62	84	146	0.7%	-	-	-	-	3,432	16.0%
OC	-	-	-	0.0%	58	50	108	0.5%	-	-	-	-	108	0.5%
PHARM	-	-	-	0.0%	15	9	24	0.1%	155	205	360	1.7%	384	1.8%
SCI	1,300	1,680	2,980	13.9%	262	246	508	2.4%	-	-	-	-	3,488	16.3%
VM	-	-	-	0.0%	2	2	4	0.0%	40	170	210	1.0%	214	1.0%
GRAD	-	-	-	0.0%	272	350	622	2.9%	-	-	-	-	622	2.9%
UESP	437	374	811	3.8%	-	-	-	0.0%	-	-	-	-	811	3.8%
<b>Total 2010</b>	<b>9,396</b>	<b>8,355</b>	<b>17,751</b>	<b>82.8%</b>	<b>1,611</b>	<b>1,511</b>	<b>3,122</b>	<b>14.6%</b>	<b>195</b>	<b>375</b>	<b>570</b>	<b>2.7%</b>	<b>21,443</b>	<b>100.0%</b>
<b>Total 2009</b>	<b>8,615</b>	<b>7,580</b>	<b>16,195</b>	<b>82.4%</b>	<b>1,530</b>	<b>1,374</b>	<b>2,904</b>	<b>14.8%</b>	<b>189</b>	<b>357</b>	<b>546</b>	<b>2.8%</b>	<b>19,645</b>	<b>100.0%</b>

## Enrollment by Gender and Student Level



## By Residency\* and Student Level

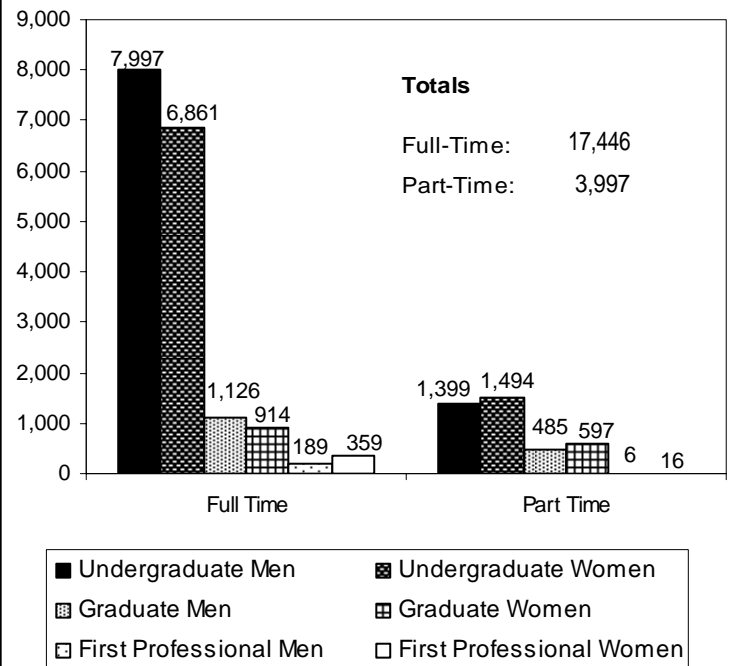


\* Residency is based upon tuition and fee status.

## Enrollment, Credit Hours, and FTE by Class Standing

Class Standing	Student Enrollment	Student Credit Hours	Student FTE
Freshman	3,521	49,556	3,303.7
Sophomore	3,667	50,615	3,374.3
Junior	3,947	53,460	3,564.0
Senior	5,700	74,448	4,963.2
Post Baccalaureate	452	4,256	283.7
Non-Degree Undergrad	464	4,029	268.6
<b>Total for Undergraduate</b>	<b>17,751</b>	<b>236,364</b>	<b>15,757.6</b>
Masters	1,486	16,475	1,372.9
Doctoral	1,099	13,467	1,496.3
Non-Degree Graduate	537	2,304	192.0
<b>Total for Graduate</b>	<b>3,122</b>	<b>32,246</b>	<b>3,061.3</b>
Doctor of Pharmacy	360	5,559	463.3
Veterinary Medicine	210	3,792	316.0
<b>Total for First Professional</b>	<b>570</b>	<b>9,351</b>	<b>779.3</b>
<b>GRAND TOTAL</b>	<b>21,443</b>	<b>277,961</b>	<b>19,598.1</b>

## Student Enrollment Full Time and Part Time, by Gender

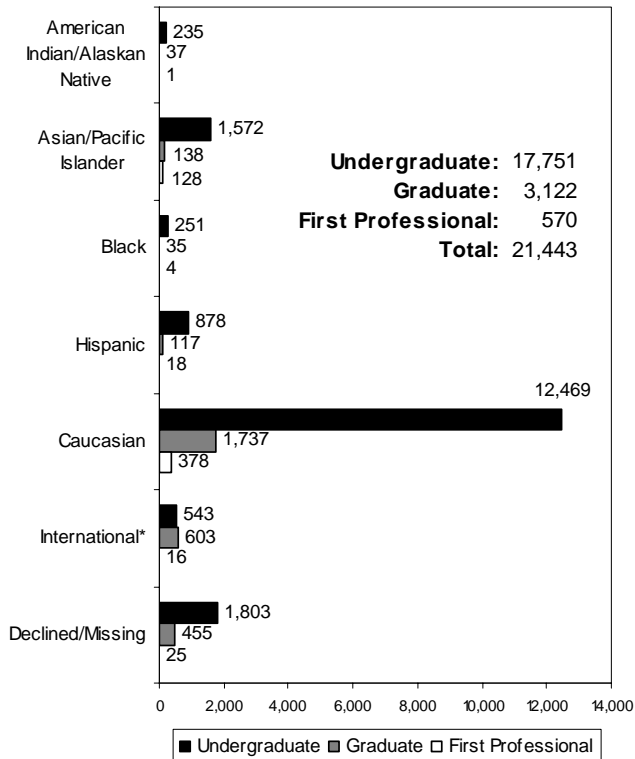


## Minority Enrollment

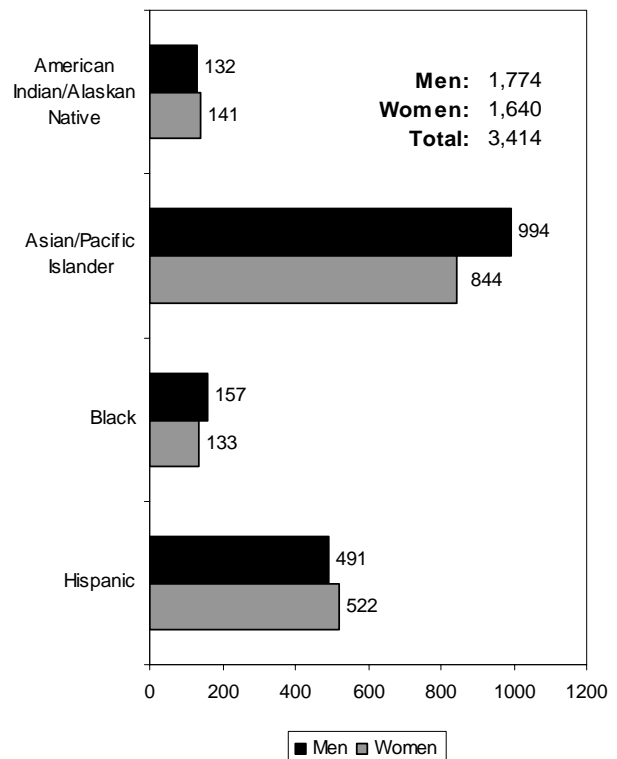
### U.S. Minorities by Academic Unit and Student Level

Academic Unit	American Indian/ Native American				Asian/ Pacific Islander				Black				Hispanic				TOTAL			
	Under-Grad	Grad	First Prof.	Total	Under-Grad	Grad	First Prof.	Total	Under-Grad	Grad	First Prof.	Total	Under-Grad	Grad	First Prof.	Total	Under-Grad	Grad	First Prof.	Total
Ag. Sciences	21	5	-	26	42	11	-	53	7	1	-	8	44	10	-	54	114	27	-	141
Business	22	-	-	22	212	5	-	217	28	3	-	31	107	1	-	108	369	9	-	378
Education	-	9	-	9	-	11	-	11	-	12	-	12	1	29	-	30	1	61	-	62
Engineering	40	2	-	42	348	43	-	391	30	6	-	36	141	17	-	158	559	68	-	627
Forestry	10	-	-	10	12	3	-	15	2	-	-	2	33	4	-	37	57	7	-	64
Graduate School	-	10	-	10	-	22	-	22	-	6	-	6	-	27	-	27	-	65	-	65
Health and Human Sci.	47	3	-	50	237	8	-	245	49	4	-	53	162	7	-	169	495	22	-	517
Liberal Arts	52	2	-	54	176	8	-	184	80	-	-	80	212	7	-	219	520	17	-	537
Oceanic and Atmos. Sci.	-	1	-	1	-	4	-	4	-	-	-	-	-	5	-	5	-	10	-	10
Pharmacy	-	-	-	-	-	2	121	123	-	-	4	4	-	-	12	12	-	2	137	139
Science	26	5	-	31	481	21	-	502	37	3	-	40	127	10	-	137	671	39	-	710
Univ. Explor. Studies	17	-	-	17	64	-	-	64	18	-	-	18	51	-	-	51	150	-	-	150
Vet. Medicine	-	-	1	1	-	-	7	7	-	-	-	-	-	-	6	6	-	-	14	14
<b>Total</b>	<b>235</b>	<b>37</b>	<b>1</b>	<b>273</b>	<b>1,572</b>	<b>138</b>	<b>128</b>	<b>1,838</b>	<b>251</b>	<b>35</b>	<b>4</b>	<b>290</b>	<b>878</b>	<b>117</b>	<b>18</b>	<b>1,013</b>	<b>2,936</b>	<b>327</b>	<b>151</b>	<b>3,414</b>

### Ethnicity — All Students — by Level



### U.S. Minorities by Gender



\*International students are identified by Admit Type code.

## OSU Extended Campus

### Enrollment, Credit Hours, and FTE by Class Standing

Students Who Took Courses Through Ecampus\*

Class Standing	Student Enrollment	Student Credit Hours	Student FTE
Freshman	373	1,173	78.2
Sophomore	545	2,342	156.1
Junior	876	4,486	299.1
Senior	1,415	7,328	488.5
Post Baccalaureate	183	964	64.3
Non-Degree Undergrad	249	1,012	67.5
<b>Total for Undergraduate</b>	<b>3,641</b>	<b>17,305</b>	<b>1,153.7</b>
Masters	272	1,341	111.8
Doctoral	113	556	61.8
Non-Degree Graduate	393	1,462	121.8
<b>Total for Graduate</b>	<b>778</b>	<b>3,359</b>	<b>295.4</b>
Doctor of Pharmacy	5	7	0.6
Veterinary Medicine	-	-	-
<b>Total for First Professional</b>	<b>5</b>	<b>7</b>	<b>0.6</b>
<b>GRAND TOTAL (Winter 2010)</b>	<b>4,424</b>	<b>20,671</b>	<b>1,449.6</b>
(Winter 2009)	3,463	16,011	1,123.0

\*Table indicates students enrolled in courses offered not only through Ecampus, but also courses at OSU-Corvallis.

### Enrollment by Class Standing and Residency

Students Who Took Courses Only Through Ecampus\*\*

Class Standing	Oregon Resident	Non-Resident	Total
Freshman	25	33	58
Sophomore	73	58	131
Junior	156	145	301
Senior	326	222	548
Post Baccalaureate	30	91	121
Non-Degree Undergrad	50	171	221
<b>Total for Undergraduate</b>	<b>660</b>	<b>720</b>	<b>1,380</b>
Masters	130	88	218
Doctoral	56	52	108
Non-Degree Graduate	101	230	331
<b>Total for Graduate</b>	<b>287</b>	<b>370</b>	<b>657</b>
Doctor of Pharmacy	-	-	-
Veterinary Medicine	-	-	-
<b>Total for First Professional</b>	<b>-</b>	<b>-</b>	<b>-</b>
<b>GRAND TOTAL (Winter 2010)</b>	<b>947</b>	<b>1,090</b>	<b>2,037</b>
(Winter 2009)	775	761	1,536

\*\*Table indicates students enrolled in only Ecampus-offered courses; i.e., students are not enrolled in any OSU-Corvallis on-campus courses.

## Student Credit Hours by Academic Unit\* and Class Standing

Academic Unit*	Freshman	Sophomore	Junior	Senior	Post Bac	Non-Degree Undergrad	Undergrad Total	Master	Doctorate	Non-Degree Grad	Grad Total	First Professional	TOTAL
AG	92	248	739	1,201	323	141	2,744	15	-	231	246	-	2,990
BUS	12	84	396	568	12	4	1,076	-	-	8	8	4	1,088
ED	-	3	21	54	6	6	90	857	549	199	1,605	-	1,695
ENGR	-	-	-	-	-	-	-	242	-	53	295	-	295
FOR	28	30	129	185	73	31	476	9	-	108	117	-	593
HHS	81	165	232	394	34	13	919	-	3	18	21	-	940
LA	612	1,180	2,048	3,608	189	286	7,923	60	-	177	237	-	8,160
OC	12	27	41	113	12	6	211	-	-	1	1	-	212
PHARM	4	20	18	18	10	-	70	-	-	4	4	-	74
SCI	324	560	782	1,075	266	508	3,515	158	4	648	810	3	4,328
ALS**	8	10	8	6	-	2	34	-	-	-	-	-	34
IP***	-	15	72	106	39	15	247	-	-	6	6	-	253
GRAD	-	-	-	-	-	-	-	-	-	9	9	-	9
<b>Total SCH</b>	<b>1,173</b>	<b>2,342</b>	<b>4,486</b>	<b>7,328</b>	<b>964</b>	<b>1,012</b>	<b>17,305</b>	<b>1,341</b>	<b>556</b>	<b>1,462</b>	<b>3,359</b>	<b>7</b>	<b>20,671</b>
<b>Total FTE</b>	<b>78.2</b>	<b>156.1</b>	<b>299.1</b>	<b>488.5</b>	<b>64.3</b>	<b>67.5</b>	<b>1,153.7</b>	<b>111.8</b>	<b>61.8</b>	<b>121.8</b>	<b>295.4</b>	<b>0.6</b>	<b>1,449.6</b>

\*Academic Units are those that offered the courses. \*\*Academic Learning Services. \*\*\*Interdisciplinary Programs.



### OSU Extended Campus Student Enrollment by Academic Unit and Ethnicity All Students Who Took Courses Through ECampus

Acad. Unit	American Indian /Alaskan Native		Asian /Pacific Islander		Black		Hispanic		White		International		Declined to Respond / Missing		TOTAL	
	Under-grad	Grad Total	Under-grad	Grad Total	Under-grad	Grad Total	Under-grad	Grad Total	Under-grad	Grad Total	Under-grad	Grad Total	Under-grad	Grad Total	Under-grad	Grad Total
AG	7	- 7	6	- 6	2	- 2	9	2 11	244	4 248	4	- 4	49	7 56	321	13 334
BUS	4	- 4	30	- 30	5	- 5	22	- 22	219	- 219	9	- 9	21	- 21	310	- 310
ED	-	6 6	-	7 7	-	8 8	-	20 20	5	171 176	-	8 8	-	25 25	5	245 250
ENGR	3	1 4	24	4 28	4	1 5	17	3 20	172	36 208	17	2 19	23	16 39	260	63 323
FOR	7	- 7	4	1 5	2	- 2	15	1 16	263	10 273	4	- 4	79	5 84	374	17 391
HHS	9	- 9	32	1 33	9	- 9	21	- 21	351	4 355	9	- 9	50	7 57	481	12 493
LA	18	- 18	43	- 43	39	- 39	54	1 55	714	3 717	12	2 14	172	4 176	1,052	10 1,062
OC	-	-	-	-	-	-	-	1 1	-	8 8	-	-	-	1 1	-	10 10
PHARM*	-	-	-	1 1	-	-	-	-	-	4 4	-	-	-	-	-	5 5
SCI	7	1 8	72	1 73	10	1 11	24	4 28	406	40 446	11	- 11	127	52 179	657	99 756
GRAD	-	5 5	-	5 5	-	4 4	-	14 14	-	123 123	-	5 5	-	153 153	-	309 309
UESP	2	- 2	12	- 12	5	- 5	5	- 5	97	- 97	4	- 4	56	- 56	181	- 181
<b>Total</b>	<b>57</b>	<b>13 70</b>	<b>223</b>	<b>20 243</b>	<b>76</b>	<b>14 90</b>	<b>167</b>	<b>46 213</b>	<b>2,471</b>	<b>403 2,874</b>	<b>70</b>	<b>17 87</b>	<b>577</b>	<b>270 847</b>	<b>3,641</b>	<b>783 4,424</b>

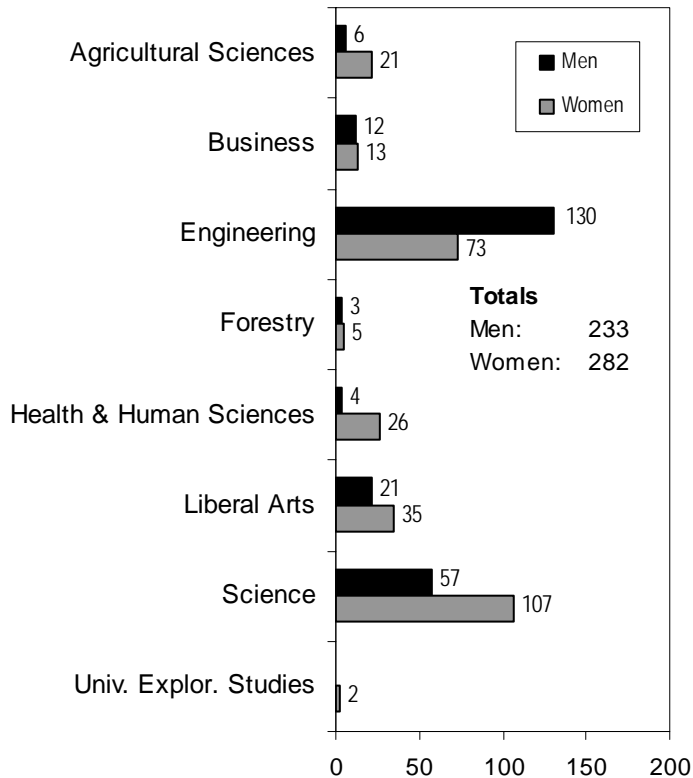
\*First Professional students are included in the graduate totals.

## University Honors College Students By Academic Unit and Student Class Standing

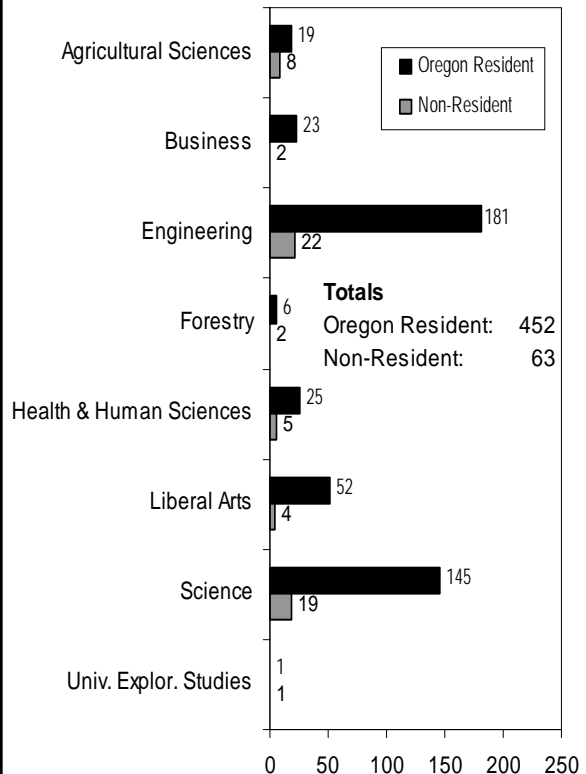
Academic Unit	Freshman	Sophomore	Junior	Senior	Total	% of Undergrad Enrollment for College
Agricultural Sciences	2	7	8	10	27	2.3
Business	3	4	5	13	25	1.1
Engineering	19	53	49	82	203	5.7
Forestry	-	1	3	4	8	1.1
Health and Human Sciences	4	2	11	13	30	1.0
Liberal Arts	3	10	14	29	56	1.7
Science	22	35	44	63	164	5.5
University Exploratory Studies	-	2	-	-	2	0.2
<b>TOTAL*</b>	<b>53</b>	<b>114</b>	<b>134</b>	<b>214</b>	<b>515</b>	<b>2.9</b>

\*The total may include students who are participating in MECOP, Study Abroad, or other experiential learning programs.

### By Academic Unit and Gender



### By Academic Unit and Residency



## Cascades Campus Enrollment

Winter Term 2010				
Tier	Enrollment Type	Institution Providers	Headcount	Term FTE
1 & 2*	OSU-Cascades	OSU, UO	601	349.2
<b>Total OSU-Cascades Enrollment</b>			<b>601</b>	<b>349.2</b>
3**	OSU Admitted Non-Enrolled	COCC	184	136.0
<b>Total Students Receiving Services</b>			<b>785</b>	<b>485.2</b>

### Oregon State University – Cascades Campus, Tier 1 and Tier 2

Gender	Headcount	Percent
Female	380	63.2%
Male	221	36.8%
Full-Time, Part-Time	Headcount	Percent
Full-Time	175	29.1%
Part-Time	426	70.9%
Level	Headcount	Percent
Undergraduate	497	82.7%
Graduate	104	17.3%
Residency	Headcount	Percent
Oregon Residents	581	96.7%
Non-Residents	20	3.3%
Level and Age Group	Headcount	Percent
Undergraduate < 25	220	36.6%
Undergraduate 25 and older	277	46.1%
Graduate 25 and older	95	15.8%
Graduate <25	9	1.5%
Ethnicity	Headcount	Percent
Black	2	0.3%
American Indian/Alaskan Native	15	2.5%
Asian / Pacific Islander	7	1.2%
Hispanic	23	3.8%
<b>Total for U.S. Minorities</b>	<b>47</b>	<b>7.8%</b>
White	454	75.5%
International	1	0.2%
Declined to Respond / Missing	99	16.5%
<b>GRAND TOTAL</b>	<b>601</b>	<b>100.0%</b>

Student Class Standing	Headcount	Credit Hours	FTE
Freshman	1	4	0.3
Sophomore	23	134	8.9
Junior	92	711	47.4
Senior	126	1,032	68.8
Postbac Degree Seeking	19	116	7.7
Non-Degree Undergraduate	236	1,917	127.8
<b>Subtotal for Undergraduate</b>	<b>497</b>	<b>3,914</b>	<b>260.9</b>
Masters	101	1,050	87.5
Non-Degree Graduate	3	9	0.8
<b>Subtotal for Graduate</b>	<b>104</b>	<b>1,059</b>	<b>88.3</b>
<b>TOTAL</b>	<b>601</b>	<b>4,973</b>	<b>349.2</b>

\*Source: Office of Academic Planning and Assessment, Oregon State University.

\*\*Source: OSU-Cascades.

## Highlights

■ When Winter 2009 and Winter 2010 are compared, the total enrollment increased by 1,798 students, or 9.2% (from 19,645 to 21,443). At the same time, the total student FTE increased by 1,488.0, or 8.2% (from 18,110.1 to 19,598.1), and the student credit hours increased by 21,681, or 8.5% (from 256,280 to 277,961).

■ When compared to Winter 2009, the undergraduate enrollment increased by 1,556 students, or 9.6% (from 16,195 to 17,751); the graduate enrollment increased by 7.5% (from 2,904 to 3,122); the first professional enrollment increased by 4.4% (from 546 to 570).

■ When compared to Winter 2009, Oregon residents increased by 5.7%; non-residents increased by 21.7%.

■ International student enrollment increased by 25.6%.

■ For Winter 2010, the percentage of U.S. minority students was 15.9% of the total enrollment. The number of minority students increased by 10.7% when compared to Winter 2009 (from 3,083 to 3,414).

■ The College of Engineering, College of Science, and College of Liberal Arts had the largest student enrollments (4,258, 3,488, and 3,432 respectively) when compared to the other academic units.

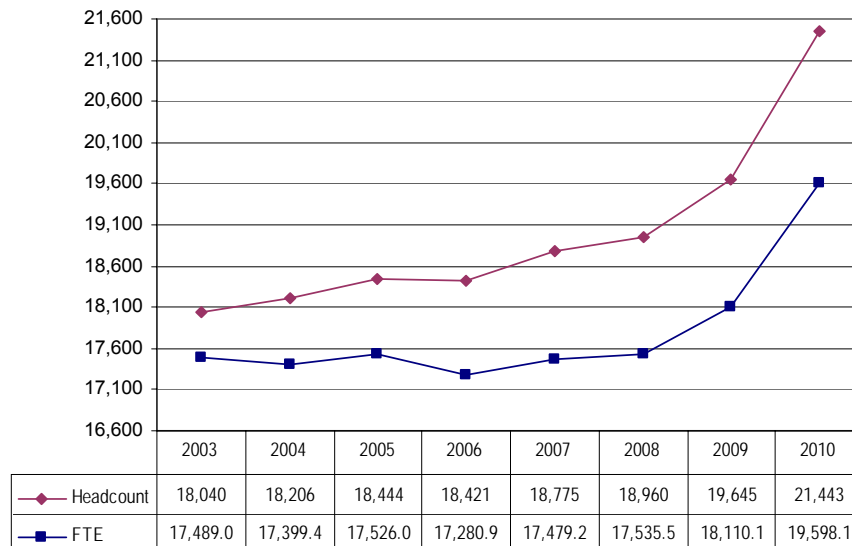
■ OSU Extended Campus had 4,424 students, an increase of 27.8% compared to Winter 2009. These students took 20,671 credits, of which 39.5% were from the College of Liberal Arts, while 20.9% were from the College of Science.

■ During Winter 2010, a total of 785 students received services from OSU Cascades Campus.

■ Other increases that occurred when comparing Winter 2009 and Winter 2010 are as follows:

- Undergraduate students age 25 and older: 21.4%
- Part-time students: 10.1%
- Female students: 10.0%
- Full-time students: 8.9%
- Graduate students age 25 and older: 8.7%
- Male students: 8.4%
- Undergraduate students under age 25: 7.7%
- First Professional students under age 25: 6.6%
- Graduate students under age 25: 3.1%
- First Professional students 25 and older: 2.8%

## Winter Enrollment Trend 2003-2010



Source: Winter Term 2010, 4th Week Student Data Extract File.

Comments about this publication are welcome.

Please contact the staff in the Office of Academic Planning & Assessment, Kerr Administration Building (541-737-9600).

For definitions, go to the following IRIS Help System link (<http://iriis.oregonstate.edu/Help.aspx>) and click on

9. Definition of Categories in the Table of Contents.