

Oregon State University
College Migration Study
Fall Term 2004 Cohort Class

This is a migration study of the cohort of first time, full time (credit hours greater than or equal to 12) degree seeking undergraduate students enrolled in the Fall Term of 2004. The study provides detailed information on enrollment, graduation, retention, attrition, and migration of the cohort class over a 1-year to 6-year time span. With this study, each college can track the migration patterns of their students and determine the graduation, retention, and attrition rates of students in their college cohort from 2004-2010.

There were 2,894 students in the Fall Term 2004 cohort class enrolled in colleges/programs at the university. Table 1 contains the student graduation, retention, and attrition numbers and percentages for 2008 (4-year), 2009 (5-year) and 2010 (6-year). The data show that in Fall Term 2010, there were 138 students from the cohort continuing their study at the university. Figures 1, 2, and 3 depict the graduation, retention, and attrition rates by year for the Fall Term 2004 cohort class. The six-year graduation rate for Fall Term 2004 cohort was 60.4%. The first year retention rate for the Fall Term 2004 cohort was 80.3%. One year later, 19.7% of the students in the cohort had left OSU.

Table 1: Fall Term 2004 Cohort Graduation, Retention, and Attrition Rates						
Fall 2004 Cohort	2008		2009		2010	
	Number	Percentage	Number	Percentage	Number	Percentage
Graduation	905	31.3%	1,569	54.2%	1,748	60.4%
Continuation	988	34.1%	287	9.9%	138	4.8%
Attrition	1,001	34.6%	1,038	35.9%	1,008	34.8%
Total	2,894	100.0%	2,894	100.0%	2,894	100.0%

Figure 1: Graduation Rate by Year

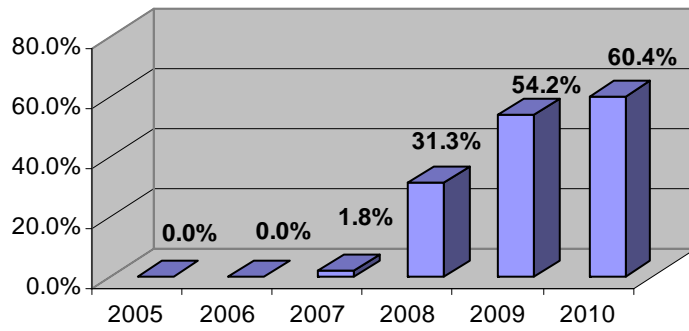


Figure 2: Retention Rate by Year

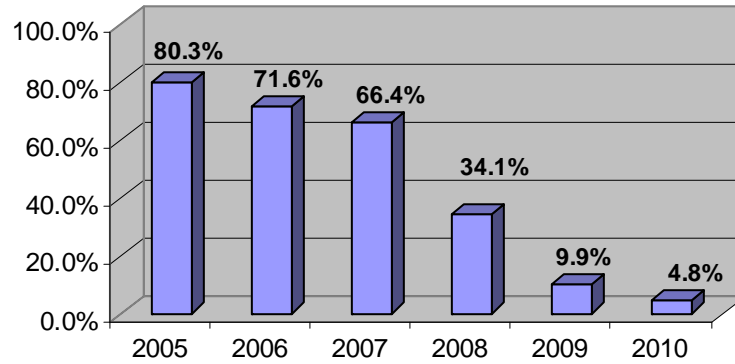
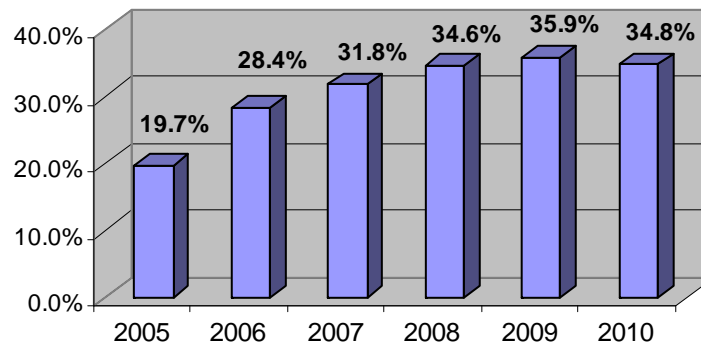


Figure 3: Attrition Rate by Year



For students who graduated from OSU, a large proportion graduated from colleges other than the one in which they had initially enrolled in Fall Term 2004. Table 2 lists the numbers of students who graduated from their original colleges and from other colleges they transferred to by year. By the end of Summer Term 2010, 60.4% of students (1,748) in the cohort class had graduated; 60.8% of them (1,063) graduated from the same college in which they originally enrolled in Fall 2004 and 39.2% (685) graduated from other colleges. Students who stayed in the same college in which they originally enrolled graduated sooner than those in the cohort who changed colleges.

Table 2: Graduation in four, five, and six years						
Fall 2004 Cohort	2008		2009		2010	
	Number	Percentage	Number	Percentage	Number	Percentage
From the same college	594	65.6%	966	61.6%	1,063	60.8%
From other colleges	311	34.4%	603	38.4%	685	39.2%
Total graduation	905	100.0%	1,569	100.0%	1,748	100.0%

In the group of continuing students, some continued in the same college and some transferred to other colleges. Table 3 contains the net gains and losses of students by college for each year. The Colleges of Engineering, Science and the University Exploratory Studies Program consistently lost students to other colleges. The Colleges of Agricultural Sciences, Forestry, Health and Human Sciences (Home Economics and Education, College of Health & Human Performance), and Liberal Arts gained students from other colleges each year.

Table 3: Net gain/loss of students by college in each year						
	2005	2006	2007	2008	2009	2010
Agricultural Sciences	5	13	10	5	4	4
Business	21	43	39	14	14	-2
Education	0	0	1	2	2	2
Engineering	-85	-105	-119	-79	-29	-6
Forestry	10	13	11	12	6	3
Health and Human Sciences	112	164	175	90	38	17
Liberal Arts	38	146	174	110	24	15
Pharmacy	0	2	18	29	0	0
Science	-41	-111	-124	-62	-23	-18
University Exploratory Studies Program	-60	-165	-186	-131	-36	-15
Veterinary Medicine	0	0	1	10	0	0

Details on the redistribution of continuing students are provided in Figures 4-9.

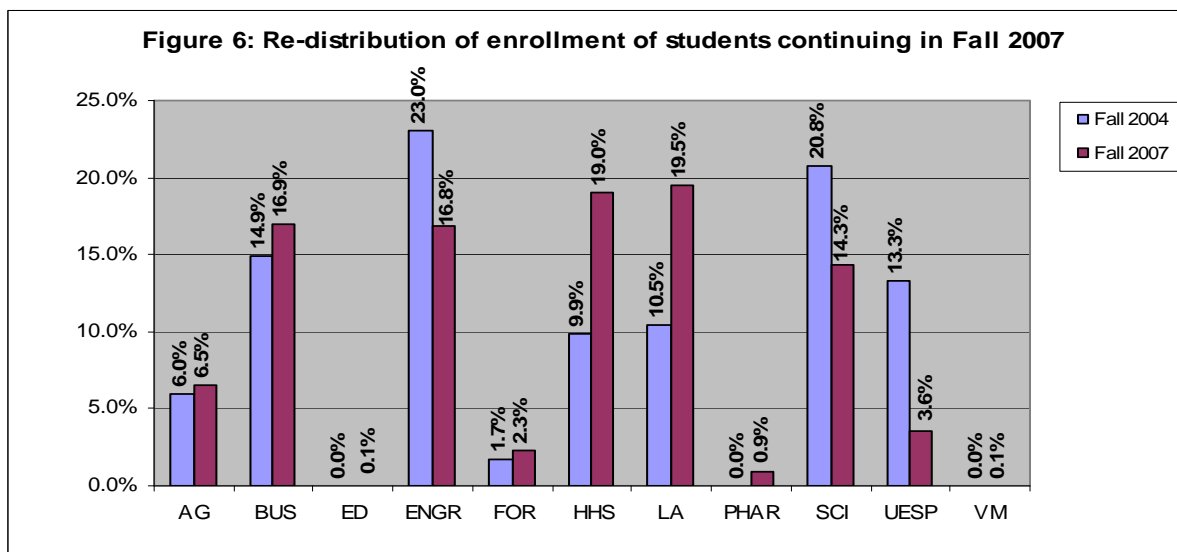
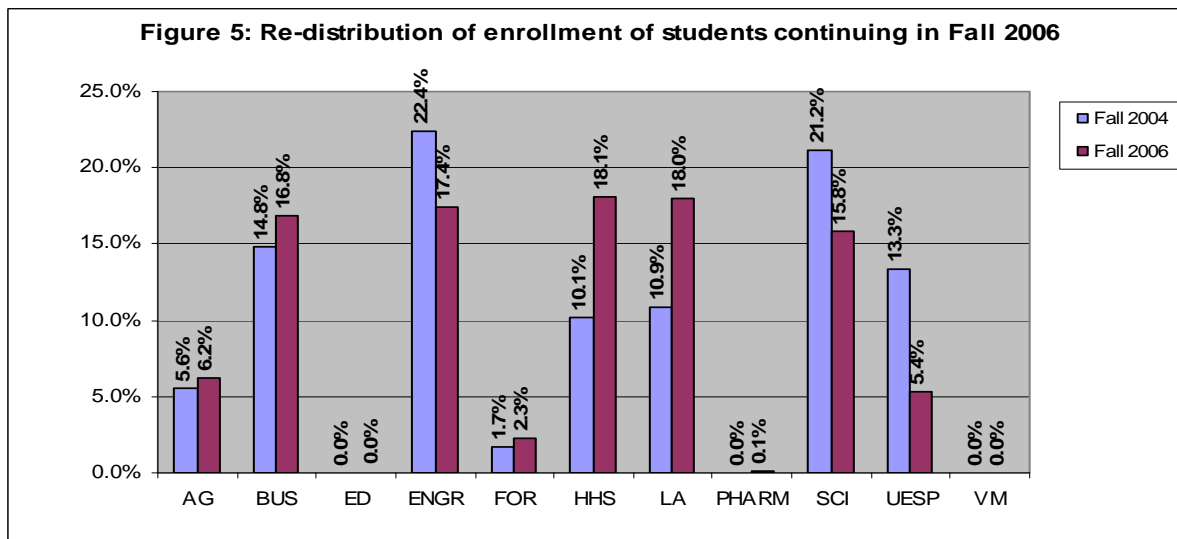
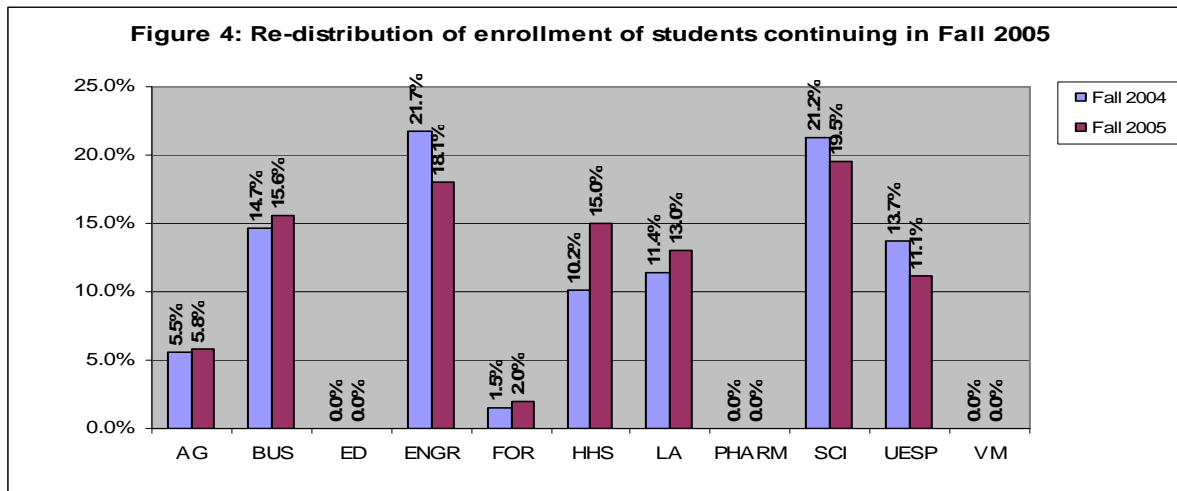


Figure 7: Re-distribution of enrollment of students continuing in Fall 2008

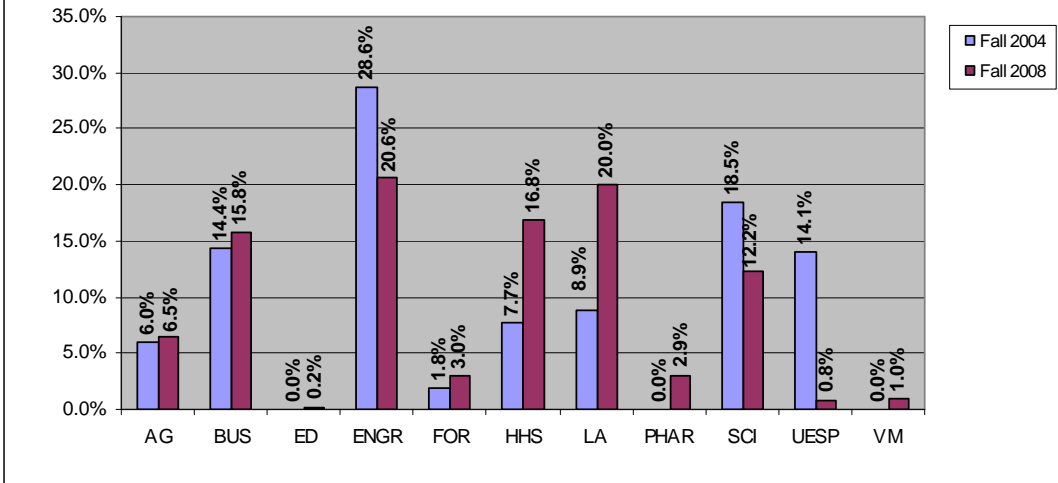


Figure 8: Re-distribution of enrollment of students continuing in Fall 2009

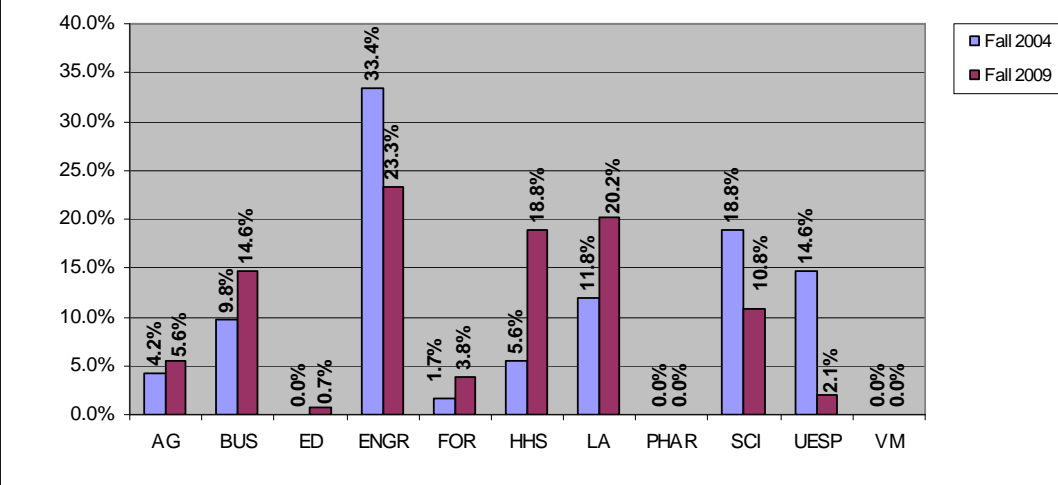
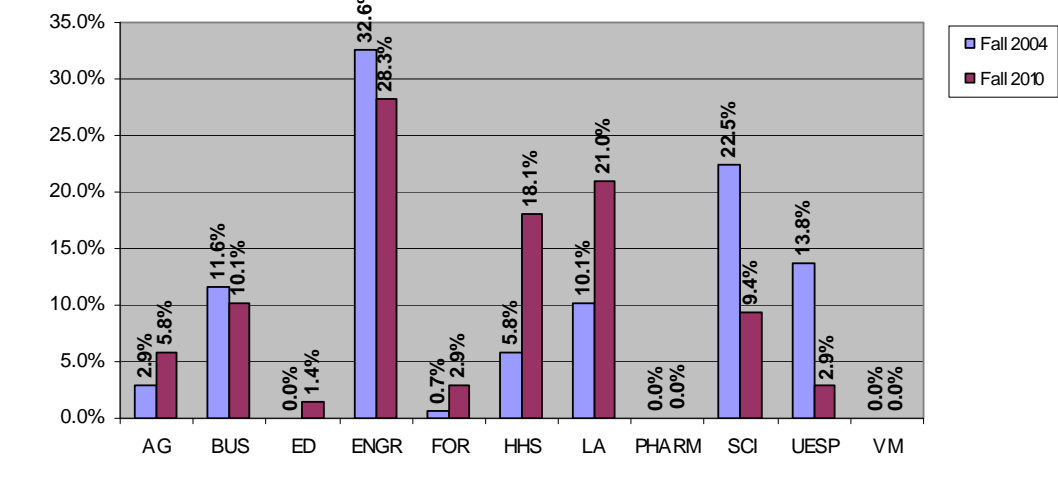


Figure 9: Re-distribution of enrollment of students continuing in Fall 2010



Tables 4-9 contain retention and graduation data for each college from Fall 2005 to Fall 2010 for the Fall 2004 cohort. The shaded columns in the top table on each page denote the college that students migrated to, listed by college. For example, in Table 4, the College of Agricultural Sciences has 156 students in Fall Term 2004 cohort class. 27 Agricultural Sciences students left OSU after their first year. Of those who stayed, 119 continued in Agricultural Sciences, 1 transferred to Engineering, 2 to Forestry, 2 to Health and Human Sciences, 1 to Liberal Arts, and 4 transferred to Science. Thus, Agricultural Sciences had 6.4% of their cohort migrate to other OSU colleges; 76.3% of the original cohort remained in Agricultural Sciences. The overall retention rate at OSU for this cohort of Agricultural Sciences students was 82.7%.

The second table on each page contains the net gain or loss by college for the freshman cohort. Again, for Agricultural Sciences, 2 students transferred in from Business, 1 from Engineering, 1 was gained from Liberal Arts, 3 from Science, and 2 from Veterinary Medicine. At the same time, Agricultural Sciences lost 2 students to Forestry and 2 were lost to Health and Human Sciences. These changes resulted in a net gain of 5 students.

Over the course of this study, Health and Human Sciences and Liberal Arts consistently gained the most students from other colleges. Forestry, Business, and Agricultural Sciences also consistently received students from other colleges. University Exploratory Studies Program consistently transferred more students to other colleges; this is expected given the purpose of University Exploratory Studies Program. With University Exploratory Studies Program omitted, the College of Engineering had the most students transferring to other OSU colleges over the course of the study.

The graduation results begin in Table 6, Fall 2004 -Fall 2007. For example, after three years (Table 6), two students from the Agricultural Sciences cohort graduated, producing a three-year graduation rate of 1.3%. After four years (Table 7) the number increased to 69 students graduated for a 44.2% graduation rate; 11 of those students graduated from another OSU college and 58 graduated from Agricultural Sciences. For

the fifth year (Table 8), 101 students in the Agricultural Sciences cohort had graduated; however, only 79 students graduated from Agricultural Sciences. The other 22 students graduated from other OSU colleges.

The sixth year (Table 9) graduation rate for Agricultural Sciences was 69.2% with a total of 83 students from the Agricultural Sciences cohort graduating in Agricultural Sciences and 25 graduating from other OSU colleges.

Overall, the fourth year graduation data (Table 7) suggests that of those students in the cohort who graduated in four years, about 34.4% (311 out of 905 graduated) were graduating from colleges other than the one in which they had originally enrolled. This number jumps to 38.4% (603 out of 1,569) after five years (Table 8) and increases again to 39.2% (685 out of 1,063) after six years (Table 9).

About 40% of the students who graduated from OSU after six years had transferred to an OSU college that was different from the college in which they had initially enrolled. The implications of this information in terms of advising and helping students to transition from college to college seem particularly appropriate.

**Table 4: Fall 2004 First Time, Full Time, Degree Seeking Undergraduate Student Cohort
Migration Study (Fall 2004 - Fall 2005)**

COLLEGE	Cohort 2004	Grad. Rate	Grad. Rate	Attr. Rate	Attr. Rate	College Migration Pattern												Cont. Rate		Rate
						AG	BUS	ED	ENGR	FOR	HHS	LA	PHAR	SCI	UESP	VM	Subtotal	Trans.*	College**	
Agricultural Sciences	156	0	0%	27	17.3%	119	0	0	1	2	2	1	0	4	0	0	129	6.4%	76.3%	82.7%
Business	425	0	0%	84	19.8%	2	283	0	5	2	20	9	0	5	15	0	341	13.6%	66.6%	80.2%
Education	0	0	0%	0	0.0%	0	0	0	0	0	0	0	0	0	0	0	0	0.0%	0.0%	0.0%
Engineering	616	0	0%	111	18.0%	2	20	0	394	2	12	19	0	21	35	0	505	18.0%	64.0%	82.0%
Forestry	44	0	0%	8	18.2%	0	0	0	1	31	4	0	0	0	0	0	36	11.4%	70.5%	81.8%
Health & Human Sciences	289	0	0%	53	18.3%	0	8	0	1	2	201	10	0	7	7	0	236	12.1%	69.6%	81.7%
Liberal Arts	338	0	0%	73	21.6%	2	8	0	2	0	28	206	0	9	10	0	265	17.5%	60.9%	78.4%
Pharmacy	0	0	0%	0	0.0%	0	0	0	0	0	0	0	0	0	0	0	0	0.0%	0.0%	0.0%
Science	607	0	0%	113	18.6%	7	10	0	3	4	39	26	0	384	21	0	494	18.1%	63.3%	81.4%
University Exploratory Studies Program	419	0	0%	100	23.9%	2	33	0	13	3	42	32	0	23	171	0	319	35.3%	40.8%	76.1%
Veterinary Medicine	0	0	0%	0	0%	0	0	0	0	0	0	0	0	0	0	0	0	0.0%	0.0%	0.0%
TOTAL	2,894	0	0%	569	19.7%	134	362	0	420	46	348	303	0	453	259	0	2,325	80.3%		80.3%

* Percentage of students transferred to other colleges from the college they originally enrolled in Fall 2004.

** Percentage of students continued in the same college as they originally enrolled in.

**Table 4.1 Fall 2004 First Time, Full Time, Degree Seeking Undergraduate Student Cohort
Net Gain / Loss by College (Fall 2004 - Fall 2005)**

COLLEGE	AG	BUS	ED	ENGR	FOR	HHS	LA	PHARM	SCI	VM	UESP	Net Gain / Loss	Continued from original cohort		Fall 2005 Enrollment each college	
													%	%		
Agricultural Sciences	0	2	0	1	-2	-2	1	0	3	2	0	5	129	5.5%	134	5.8%
Business	-2	0	0	15	-2	-12	-1	0	5	18	0	21	341	14.7%	362	15.6%
Education	0	0	0	0	0	0	0	0	0	0	0	0	0	0.0%	0	0.0%
Engineering	-1	-15	0	0	-1	-11	-17	0	-18	-22	0	-85	505	21.7%	420	18.1%
Forestry	2	2	0	1	0	-2	0	0	4	3	0	10	36	1.5%	46	2.0%
Health & Human Sciences	2	12	0	11	2	0	18	0	32	35	0	112	236	10.2%	348	15.0%
Liberal Arts	-1	1	0	17	0	-18	0	0	17	22	0	38	265	11.4%	303	13.0%
Pharmacy	0	0	0	0	0	0	0	0	0	0	0	0	0	0.0%	0	0.0%
Science	-3	-5	0	18	-4	-32	-17	0	0	2	0	-41	494	21.2%	453	19.5%
University Exploratory Studies Program	-2	-18	0	22	-3	-35	-22	0	-2	0	0	-60	319	13.7%	259	11.1%
Veterinary Medicine	0	0	0	0	0	0	0	0	0	0	0	0	0	0.0%	0	0.0%
Total												0	2,325	100%	2,325	100%

Table 5: Fall 2004 First Time, Full Time, Degree Seeking Undergraduate Student Cohort Migration Study (Fall 2004 - Fall 2006)																						
COLLEGE	Cohort 2004	Grad. Total	Same college*	Other college**	Grad. Rate	Attr. Rate	Attr. Rate	College Migration Pattern											Cont. Rate		Retention Rate	
								AG	BUS	ED	ENGR	FOR	HHS	LA	PHAR	SCI	UESP	VM	Subtotal	Trans.		College
Agricultural Sciences	156	0	0	0	0.0%	41	26.3%	97	0	0	1	3	5	1	0	8	0	0	115	11.5%	62.2%	73.7%
Business	425	0	0	0	0.0%	119	28.0%	2	215	0	6	1	22	45	0	5	10	0	306	21.4%	50.6%	72.0%
Education	0	0	0	0	0.0%	0	0.0%	0	0	0	0	0	0	0	0	0	0	0	0	0.0%	0.0%	0.0%
Engineering	616	0	0	0	0.0%	151	24.5%	9	36	0	339	7	13	24	0	22	15	0	465	20.5%	55.0%	75.5%
Forestry	44	0	0	0	0.0%	9	20.5%	2	0	0	1	27	3	1	0	1	0	0	35	18.2%	61.4%	79.5%
Health & Human Sciences	289	0	0	0	0.0%	79	27.3%	0	10	0	1	3	174	18	0	1	3	0	210	12.5%	60.2%	72.7%
Liberal Arts	338	0	0	0	0.0%	112	33.1%	2	14	0	2	0	32	162	0	9	5	0	226	18.9%	47.9%	66.9%
Pharmacy	0	0	0	0	0.0%	0	0.0%	0	0	0	0	0	0	0	0	0	0	0	0	0.0%	0.0%	0.0%
Science	607	0	0	0	0.0%	168	27.7%	11	14	0	7	4	62	50	2	282	7	0	439	25.9%	46.5%	72.3%
University Exploratory Studies Program	419	0	0	0	0.0%	143	34.1%	5	48	0	15	3	63	71	0	29	42	0	276	55.8%	10.0%	65.9%
Veterinary Medicine	0	0	0	0	0.0%	0	0.0%	0	0	0	0	0	0	0	0	0	0	0	0	0.0%	0.0%	0.0%
TOTAL	2,894	0	0	0	0.0%	822	28.4%	128	337	0	372	48	374	372	2	357	82	0	2,072	71.6%	71.6%	

* Number of students graduated from the colleges same as that they enrolled originally in Fall 2004.

** Number of students transferred to other colleges from their originally enrolled cohort college and graduated from the colleges they've transferred to.

Table 5.1: Fall 2004 First Time, Full Time, Degree Seeking Undergraduate Student Cohort Net Gain / Loss by College (Fall 2004- Fall 2006)																
COLLEGE	AG	BUS	ED	ENGR	FOR	HHS	LA	PHARM	SCI	UESP	VM	Net Gain/Loss	Continued from orig cohort	%	Fall 2006 Enrollment each college	%
Agricultural Sciences	0	2	0	8	-1	-5	1	0	3	5	0	13	115	5.6%	128	6.2%
Business	-2	0	0	42	-1	-12	-31	0	9	38	0	43	306	14.8%	349	16.8%
Education	0	0	0	0	0	0	0	0	0	0	0	0	0	0.0%	0	0.0%
Engineering	-8	-42	0	0	-6	-12	-22	0	-15	0	0	-105	465	22.4%	360	17.4%
Forestry	1	1	0	6	0	0	-1	0	3	3	0	13	35	1.7%	48	2.3%
Health & Human Sciences	5	12	0	12	0	0	14	0	61	60	0	164	210	10.1%	374	18.1%
Liberal Arts	-1	31	0	22	1	-14	0	0	41	66	0	146	226	10.9%	372	18.0%
Pharmacy	0	0	0	0	0	0	0	0	2	0	0	2	0	0.0%	2	0.1%
Science	-3	-9	0	15	-3	-61	-41	-2	0	-7	0	-111	439	21.2%	328	15.8%
University Exploratory Studies Program	-5	-38	0	0	-3	-60	-66	0	7	0	0	-165	276	13.3%	111	5.4%
Veterinary Medicine	0	0	0	0	0	0	0	0	0	0	0	0	0	0.0%	0	0.0%
Total												0	2,072	100%	2,072	100%

**Table 6: Fall 2004 First Time, Full Time, Degree Seeking Undergraduate Student Cohort
Migration Study (Fall 2004 - Fall 2007)**

COLLEGE	Cohort 2004	Grad. Total college*	Same college**	Other college**	Grad. Rate	Attr. Rate	Attr. Rate	College Migration Pattern												Cont. Rate		Retention Rate
								AG	BUS	ED	ENGR	FOR	HHS	LA	PHAR	SCI	UESP	VM	Subtotal	Trans.	College	
Agricultural Sciences	156	2	2	0	1.3%	39	25.0%	90	0	0	2	3	6	3	0	10	0	1	115	16.0%	57.7%	73.7%
Business	425	10	10	0	2.4%	129	30.4%	2	186	0	6	0	25	48	0	6	13	0	286	23.5%	43.8%	67.3%
Education	0	0	0	0	0.0%	0	0.0%	0	0	0	0	0	0	0	0	0	0	0	0	0.0%	0.0%	0.0%
Engineering	616	7	7	0	1.1%	167	27.1%	14	45	0	302	5	16	31	0	24	5	0	442	22.7%	49.0%	71.8%
Forestry	44	0	0	0	0.0%	11	25.0%	1	0	1	1	26	2	1	0	1	0	0	33	15.9%	59.1%	75.0%
Health & Human Sciences	289	8	6	2	2.8%	91	31.5%	0	7	0	0	2	159	17	0	3	2	0	190	10.7%	55.0%	65.7%
Liberal Arts	338	9	9	0	2.7%	128	37.9%	1	13	0	3	1	31	139	0	11	2	0	201	18.3%	41.1%	59.5%
Pharmacy	0	0	0	0	0.0%	0	0.0%	0	0	0	0	0	0	0	0	0	0	0	0	0.0%	0.0%	0.0%
Science	607	12	8	4	2.0%	196	32.3%	10	15	0	9	4	63	55	18	220	5	0	399	29.5%	36.2%	65.7%
University Exploratory Studies Program	419	5	0	5	1.2%	159	37.9%	7	47	0	12	3	63	81	0	28	14	0	255	60.9%	0.0%	60.9%
Veterinary Medicine	0	0	0	0	0.0%	0	0.0%	0	0	0	0	0	0	0	0	0	0	0	0	0.0%	0.0%	0.0%
TOTAL	2,894	53	42	11	1.8%	920	31.8%	125	313	1	335	44	365	375	18	303	41	1	1,921	66.4%		66.4%

* Number of students graduated from the colleges same as that they enrolled originally in Fall 2004.

** Number of students transferred to other colleges from their originally enrolled cohort college and graduated from the colleges they've transferred to.

**Table 6.1: Fall 2004 First Time, Full Time, Degree Seeking Undergraduate Student Cohort
Net Gain / Loss by College (Fall 2004 - Fall 2007)**

COLLEGE	AG	BUS	ED	ENGR	FOR	HHS	LA	PHAR	SCI	UESP	VM	Net Gain/Loss	Cont. from orig. cohort		Fall 2007 Enrollment college	
													%	%	%	%
Agricultural Sciences	0	2	0	12	-2	-6	-2	0	0	7	-1	10	115	6.0%	125	6.5%
Business	-2	0	0	51	0	-18	-35	0	9	34	0	39	286	14.9%	325	16.9%
Education	0	0	0	0	1	0	0	0	0	0	0	1	0	0.0%	1	0.1%
Engineering	-12	-51	0	0	-4	-16	-28	0	-15	7	0	-119	442	23.0%	323	16.8%
Forestry	2	0	-1	4	0	0	0	0	3	3	0	11	33	1.7%	44	2.3%
Health & Human Sciences	6	18	0	16	0	0	14	0	60	61	0	175	190	9.9%	365	19.0%
Liberal Arts	2	35	0	28	0	-14	0	0	44	79	0	174	201	10.5%	375	19.5%
Pharmacy	0	0	0	0	0	0	0	0	18	0	0	18	0	0.0%	18	0.9%
Science	0	-9	0	15	-3	-60	-44	-18	0	-5	0	-124	399	20.8%	275	14.3%
University Exploratory Studies Program	-7	-34	0	-7	-3	-61	-79	0	5	0	0	-186	255	13.3%	69	3.6%
Veterinary Medicine	1	0	0	0	0	0	0	0	0	0	0	1	0	0.0%	1	0.1%
Total												0	1,921	100%	1,921	100%

**Table 7: Fall 2004 First Time, Full Time, Degree Seeking Undergraduate Student Cohort
Migration Study (Fall 2004 - Fall 2008)**

COLLEGE	Cohort 2004	Grad. Total	Same college	Other college	Grad. Rate	Attr.	Attr. Rate	College Migration Pattern												Cont. Rate		Retention Rate
								AG	BUS	ED	ENGR	FOR	HHS	LA	PHAR	SCI	UESP	VM	Subtotal	Trans.	College	
Agricultural Sciences	156	69	58	11	44.2%	28	17.9%	34	1	0	1	3	3	4	0	3	0	10	59	16.0%	21.8%	37.8%
Business	425	134	102	32	31.5%	149	35.1%	1	78	1	5	0	16	34	0	3	4	0	142	15.1%	18.4%	33.4%
Education	0	0	0	0	0.0%	0	0.0%	0	0	0	0	0	0	0	0	0	0	0	0	0.0%	0.0%	0.0%
Engineering	616	125	82	43	20.3%	208	33.8%	12	34	0	181	7	12	20	0	14	3	0	283	45.9%	0.0%	45.9%
Forestry	44	14	11	3	31.8%	12	27.3%	1	0	0	0	15	0	1	0	1	0	0	18	40.9%	0.0%	40.9%
Health & Human Sciences	289	112	101	11	38.8%	101	34.9%	0	3	0	0	1	57	13	0	2	0	0	76	26.3%	0.0%	26.3%
Liberal Arts	338	119	91	28	35.2%	131	38.8%	1	6	1	2	0	11	57	2	8	0	0	88	9.2%	16.9%	26.0%
Pharmacy	0	0	0	0	0.0%	0	0.0%	0	0	0	0	0	0	0	0	0	0	0	0	0.0%	0.0%	0.0%
Science	607	225	149	76	37.1%	199	32.8%	9	8	0	6	2	35	23	26	74	0	0	183	18.0%	12.2%	30.1%
University Exploratory Studies Program	419	107	0	107	25.5%	173	41.3%	6	26	0	9	2	32	46	1	16	1	0	139	32.9%	0.2%	33.2%
Veterinary Medicine	0	0	0	0	0.0%	0	0.0%	0	0	0	0	0	0	0	0	0	0	0	0	0.0%	0.0%	0.0%
TOTAL	2,894	905	594	311	31.3%	1,001	34.6%	64	156	2	204	30	166	198	29	121	8	10	988	34.1%		34.1%

**Table 7.1: Fall 2004 First Time, Full Time, Degree Seeking Undergraduate Student Cohort
Net Gain / Loss by College (Fall 2004 - Fall 2008)**

COLLEGE	AG	BUS	ED	ENGR	FOR	HHS	LA	PHAR	SCI	UESP	VM	Net Gain/Loss	Cont. from orig. cohort	%	Fall 2008 Enrollment each college	%
Agricultural Sciences	0	0	0	11	-2	-3	-3	0	6	6	-10	5	59	6.0%	64	6.5%
Business	0	0	-1	29	0	-13	-28	0	5	22	0	14	142	14.4%	156	15.8%
Education	0	1	0	0	0	0	1	0	0	0	0	2	0	0.0%	2	0.2%
Engineering	-11	-29	0	0	-7	-12	-18	0	-8	6	0	-79	283	28.6%	204	20.6%
Forestry	2	0	0	7	0	1	-1	0	1	2	0	12	18	1.8%	30	3.0%
Health & Human Sciences	3	13	0	12	-1	0	-2	0	33	32	0	90	76	7.7%	166	16.8%
Liberal Arts	3	28	-1	18	1	2	0	-2	15	46	0	110	88	8.9%	198	20.0%
Pharmacy	0	0	0	0	0	0	2	0	26	1	0	29	0	0.0%	29	2.9%
Science	-6	-5	0	8	-1	-33	-15	-26	0	16	0	-62	183	18.5%	121	12.2%
University Exploratory Studies Program	-6	-22	0	-6	-2	-32	-46	-1	-16	0	0	-131	139	14.1%	8	0.8%
Veterinary Medicine	10	0	0	0	0	0	0	0	0	0	0	10	0	0.0%	10	1.0%
Total												0	988	100%	988	100%

**Table 8: Fall 2004 First Time, Full Time, Degree Seeking Undergraduate Student Cohort
Migration Study (Fall 2004 - Fall 2009)**

COLLEGE	Cohort Fall 2004	Grad. Total	Same college	Other college	Grad. Rate	Attr.	Attr. Rate	College Migration Pattern												Cont. Rate		Retention Rate
								AG	BUS	ED	ENGR	FOR	HHS	LA	PHAR	SCI	UESP	VM	Subtotal	Trans.	College	
Agricultural Sciences	156	101	79	22	64.7%	43	27.6%	6	1	1	1	0	2	1	0	0	0	0	12	3.8%	3.8%	7.7%
Business	425	236	165	71	55.5%	161	37.9%	1	13	0	3	0	4	7	0	0	0	0	28	3.5%	3.1%	6.6%
Education	0	0	0	0	0.0%	0	0.0%	0	0	0	0	0	0	0	0	0	0	0	0	0.0%	0.0%	0.0%
Engineering	616	330	234	96	53.6%	190	30.8%	3	16	0	52	6	6	7	0	4	2	0	96	15.6%	0.0%	15.6%
Forestry	44	27	21	6	61.4%	12	27.3%	0	0	0	0	5	0	0	0	0	0	0	5	11.4%	0.0%	11.4%
Health & Human Sciences	289	175	147	28	60.6%	98	33.9%	0	1	1	0	0	14	0	0	0	0	0	16	5.5%	0.0%	5.5%
Liberal Arts	338	165	121	44	48.8%	139	41.1%	0	1	0	2	0	4	22	0	4	1	0	34	3.6%	6.5%	10.1%
Pharmacy	0	0	0	0	0.0%	0	0.0%	0	0	0	0	0	0	0	0	0	0	0	0	0.0%	0.0%	0.0%
Science	607	330	199	131	54.4%	223	36.7%	2	5	0	6	0	11	7	0	21	2	0	54	5.4%	3.5%	8.9%
University Exploratory Studies Program	419	205	0	205	48.9%	172	41.1%	4	5	0	3	0	13	14	0	2	1	0	42	9.8%	0.2%	10.0%
Veterinary Medicine	0	0	0	0	0.0%	0	0.0%	0	0	0	0	0	0	0	0	0	0	0	0	0.0%	0.0%	0.0%
TOTAL	2,894	1569	966	603	54.2%	1038	35.9%	16	42	2	67	11	54	58	0	31	6	0	287	9.9%		9.9%

**Table 8.1: Fall 2004 First Time, Full Time, Degree Seeking Undergraduate Student Cohort
Net Gain / Loss by College (Fall 2004 - Fall 2009)**

COLLEGE	AG	BUS	ED	ENGR	FOR	HHS	LA	PHAR	SCI	UESP	VM	Net Gain/Loss	Continued from original cohort	%	Fall 2009 Enrollment Number	%
Agricultural Sciences	0	0	-1	2	0	-2	-1	0	2	4	0	4	12	4.2%	16	5.6%
Business	0	0	0	13	0	-3	-6	0	5	5	0	14	28	9.8%	42	14.6%
Education	1	0	0	0	0	1	0	0	0	0	0	2	0	0.0%	2	0.7%
Engineering	-2	-13	0	0	-6	-6	-5	0	2	1	0	-29	96	33.4%	67	23.3%
Forestry	0	0	0	6	0	0	0	0	0	0	0	6	5	1.7%	11	3.8%
Health and Human Sciences	2	3	-1	6	0	0	4	0	11	13	0	38	16	5.6%	54	18.8%
Liberal Arts	1	6	0	5	0	-4	0	0	3	13	0	24	34	11.8%	58	20.2%
Pharmacy	0	0	0	0	0	0	0	0	0	0	0	0	0	0.0%	0	0.0%
Science	-2	-5	0	-2	0	-11	-3	0	0	0	0	-23	54	18.8%	31	10.8%
University Exploratory Studies Program	-4	-5	0	-1	0	-13	-13	0	0	0	0	-36	42	14.6%	6	2.1%
Veterinary Medicine	0	0	0	0	0	0	0	0	0	0	0	0	0	0.0%	0	0.0%
Total												0	287	100%	287	100%

**Table 9: Fall 2004 First Time, Full Time, Degree Seeking Undergraduate Student Cohort
Migration Study (Fall 2004 - Fall 2010)**

COLLEGE	Cohort Fall 2003	Grad. Total	Same college	Other college	Grad. Rate	Attr.	Attr. Rate	College Migration Pattern											Cont. Rate		Retention Rate	
								AG	BUS	ED	ENGR	FOR	HHS	LA	PHARM	SCI	UESP	VM	Subtotal	Trans.		College
Agricultural Sciences	156	108	83	25	69.2%	44	28.2%	1	1	0	0	0	0	1	0	1	0	0	4	1.9%	0.6%	2.6%
Business	425	257	179	78	60.5%	152	35.8%	0	4	1	3	0	3	5	0	0	0	0	16	2.8%	0.9%	3.8%
Education	0	0	0	0	0.0%	0	0.0%	0	0	0	0	0	0	0	0	0	0	0	0	0.0%	0.0%	0.0%
Engineering	616	390	268	122	63.3%	181	29.4%	2	7	0	26	3	4	1	0	2	0	0	45	3.1%	4.2%	7.3%
Forestry	44	31	25	6	70.5%	12	27.3%	0	0	0	0	1	0	0	0	0	0	0	1	0.0%	2.3%	2.3%
Health & Human Sciences	289	185	157	28	64.0%	96	33.2%	0	0	1	1	0	5	0	0	0	1	0	8	1.0%	1.7%	2.8%
Liberal Arts	338	182	132	50	53.8%	142	42.0%	0	0	0	0	0	3	10	0	1	0	0	14	1.2%	3.0%	4.1%
Pharmacy	0	0	0	0	0.0%	0	0.0%	0	0	0	0	0	0	0	0	0	0	0	0	0.0%	0.0%	0.0%
Science	607	362	219	143	59.6%	214	35.3%	2	2	0	6	0	6	5	0	9	1	0	31	3.6%	1.5%	5.1%
University Exploratory Studies Program	419	233	0	233	55.6%	167	39.9%	3	0	0	3	0	4	7	0	0	2	0	19	4.1%	0.5%	4.5%
Veterinary Medicine	0	0	0	0	0.0%	0	0.0%	0	0	0	0	0	0	0	0	0	0	0	0	0.0%	0.0%	0.0%
TOTAL	2,894	1748	1063	685	60.4%	1008	34.8%	8	14	2	39	4	25	29	0	13	4	0	138	4.8%		4.8%

**Table 9.1: Fall 2003 First Time, Full Time, Degree Seeking Undergraduate Student Cohort
Net Gain / Loss by College (Fall 2004 - Fall 2010)**

COLLEGE	AG	BUS	ED	ENGR	FOR	HHS	LA	PHARM	SCI	UESP	VM	Net Gain/Loss	Continued from original cohort	%	Fall 2010 Enrollment number	%
Agricultural Sciences	0	-1	0	2	0	0	-1	0	1	3	0	4	4	2.9%	8	5.8%
Business	1	0	-1	4	0	-3	-5	0	2	0	0	-2	16	11.6%	14	10.1%
Education	0	1	0	0	0	1	0	0	0	0	0	2	0	0.0%	2	1.4%
Engineering	-2	-4	0	0	-3	-3	-1	0	4	3	0	-6	45	32.6%	39	28.3%
Forestry	0	0	0	3	0	0	0	0	0	0	0	3	1	0.7%	4	2.9%
Health & Human Sciences	0	3	-1	3	0	0	3	0	6	3	0	17	8	5.8%	25	18.1%
Liberal Arts	1	5	0	1	0	-3	0	0	4	7	0	15	14	10.1%	29	21.0%
Pharmacy	0	0	0	0	0	0	0	0	0	0	0	0	0	0.0%	0	0.0%
Science	-1	-2	0	-4	0	-6	-4	0	0	-1	0	-18	31	22.5%	13	9.4%
University Exploratory Studies Program	-3	0	0	-3	0	-3	-7	0	1	0	0	-15	19	13.8%	4	2.9%
Veterinary Medicine	0	0	0	0	0	0	0	0	0	0	0	0	0	0.0%	0	0.0%
Total												0	138	100%	138	100%

Source: Office of Institutional Research (3/31/2011)